

**UNITED STATES  
DEPARTMENT OF THE INTERIOR  
BUREAU OF LAND MANAGEMENT**

**APPLICATION FOR PERMIT TO DRILL OR DEEPEN**

1a. TYPE OF WORK

DRILL ☒

DEEPEN ☐

b. TYPE OF WELL

OIL WELL ☒

GAS WELL ☐

OTHER

SINGLE ZONE ☒

MULTIPLE ZONE ☐

2. NAME OF OPERATOR

ARCO Permian

990

3. ADDRESS AND TELEPHONE NO.

P.O. Box 1610, Midland, TX 79702

915-688-5570

4. LOCATION OF WELL (Report location clearly and in accordance with any State requirements.)\*  
At surface

1980' FNL, 1980' FWL

At proposed prod. zone

SAME

Unit F

14. DISTANCE IN MILES AND DIRECTION FROM NEAREST TOWN OR POST OFFICE\*

21 MILES EAST FROM LOVING

15. DISTANCE FROM PROPOSED\*  
LOCATION TO NEAREST  
PROPERTY OR LEASE LINE, FT.  
(Also to nearest drlg. unit line, if any)

660

16. NO. OF ACRES IN LEASE

1280.81

17. NO. OF ACRES ASSIGNED  
TO THIS WELL

40

18. DISTANCE FROM PROPOSED LOCATION\*  
TO NEAREST WELL, DRILLING, COMPLETED,  
OR APPLIED FOR, ON THIS LEASE, FT.

1320

19. PROPOSED DEPTH

8450'

20. ROTARY OR CABLE TOOLS

ROTARY

21. ELEVATIONS (Show whether DF, RT, GR, etc.)

3497

22. APPROX. DATE WORK WILL START\*

9/98

23. PROPOSED CASING AND CEMENTING PROGRAM

SIZE OF HOLE	GRADE, SIZE OF CASING	WEIGHT PER FOOT	SETTING DEPTH	QUANTITY OF CEMENT
17-1/2	13-3/8 H-40	48 ST&C	860	700
11	8-5/8 J-55	32 ST&C	4600	1300
7-7/8	5-1/2 J-55	15.5 # LT&C	0-6700	935
		17# LT&C	6700-8450	

*Best TD-I  
3-26-99  
API + Loc*

SUBJECT WELL IS PLANNED AS A 8450' STRAIGHT HOLE.  
3,000 PSI BOPE WILL BE USED FROM 860' TO TD.

ATTACHMENTS ARE AS FOLLOWS:

1. CERTIFIED LOCATION PLAT
2. DRILLING PLAN WITH ATTACHMENTS
3. SURFACE USE PLAN WITH ATTACHMENTS



IN ABOVE SPACE DESCRIBE PROPOSED PROGRAM: If proposal is to deepen, give data on present productive zone and proposed new productive zone. If proposal is to drill or deepen directionally, give pertinent data on subsurface locations and measured and true vertical depths. Give blowout preventer program, if any.

24.

SIGNED

*Eliquisht A. Cushman*

TITLE

REGULATORY COMPLIANCE

DATE 8/8/98

(This space for Federal or State office use)

PERMIT NO. \_\_\_\_\_

APPROVAL DATE \_\_\_\_\_

Application approval does not warrant or certify that the applicant holds legal or equitable title to those rights in the subject lease which would entitle the applicant to conduct operations thereon.  
CONDITIONS OF APPROVAL, IF ANY:

APPROVED BY

*Richard A. Whiteley*

TITLE

Assoc. State Dir

DATE

3-15-99

\*See Instructions On Reverse Side

Title 18 U.S.C. Section 1001, makes it a crime for any person knowingly and willfully to make to any department or agency of the United States any false, fictitious or fraudulent statements or representations as to any matter within its jurisdiction.

DISTRICT I  
P.O. Box 1980, Hobbs, NM 88241-1980

State of New Mexico  
Energy, Minerals and Natural Resources Department

Form C-102  
Revised February 10, 1994  
Submit to Appropriate District Office  
State Lease - 4 Copies  
Fee Lease - 3 Copies

DISTRICT II  
P.O. Drawer DD, Artesia, NM 88211-0719

DISTRICT III  
1000 Rio Brazos Rd., Aztec, NM 87410

DISTRICT IV  
P.O. BOX 2088, SANTA FE, N.M. 87504-2088

OIL CONSERVATION DIVISION

P.O. Box 2088  
Santa Fe, New Mexico 87504-2088

☐ AMENDED REPORT

WELL LOCATION AND ACREAGE DEDICATION PLAT

API Number	Pool Code 96149	Pool Name LIVINGSTON RIDGE (DEL)
Property Code 20860	Property Name BARCLAY FEDERAL	Well Number 22
OGRID No. 000990	Operator Name ARCO PERMIAN	Elevation 3492

Surface Location

UL or lot No.	Section	Township	Range	Lot Idn	Feet from the	North/South line	Feet from the	East/West line	County
F	12	23 S	31 E		1980	NORTH	1980	WEST	EDDY

Bottom Hole Location If Different From Surface

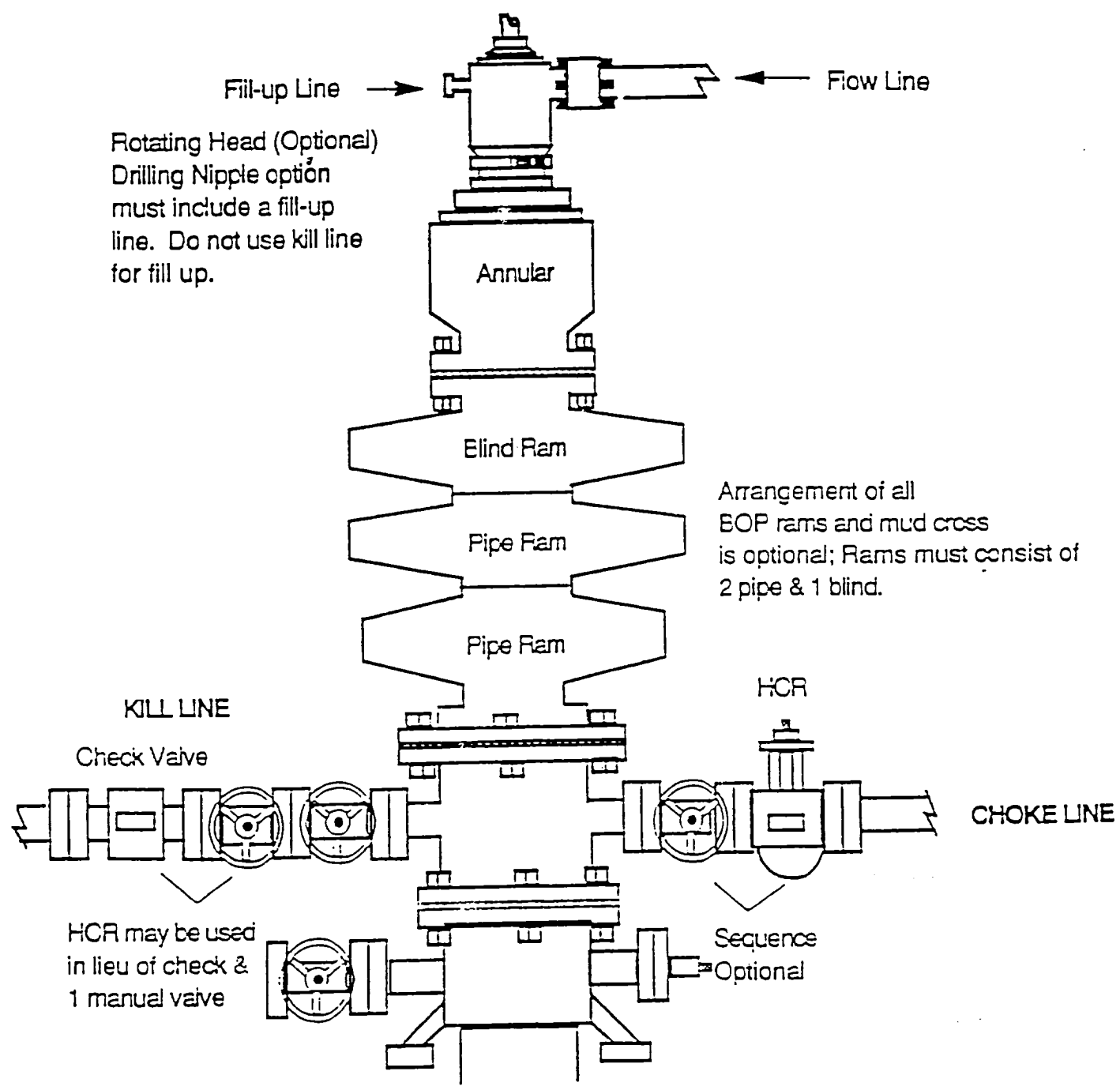
UL or lot No.	Section	Township	Range	Lot Idn	Feet from the	North/South line	Feet from the	East/West line	County
Dedicated Acres 40	Joint or Infill	Consolidation Code	Order No.						

NO ALLOWABLE WILL BE ASSIGNED TO THIS COMPLETION UNTIL ALL INTERESTS HAVE BEEN CONSOLIDATED  
OR A NON-STANDARD UNIT HAS BEEN APPROVED BY THE DIVISION

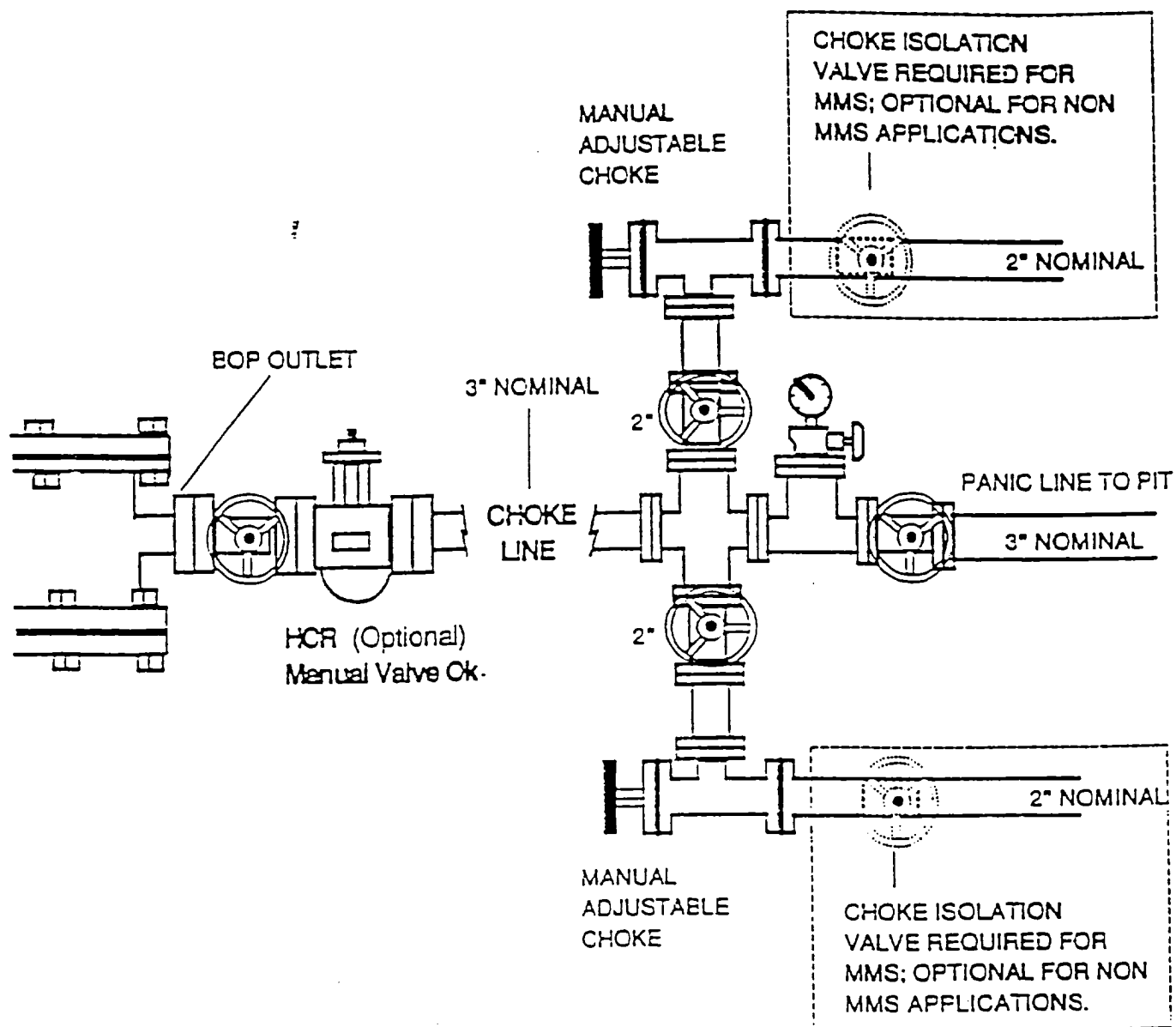
	<p>OPERATOR CERTIFICATION</p> <p>I hereby certify the the information contained herein is true and complete to the best of my knowledge and belief.</p> <p><i>Elizabeth A. Casbeer</i> Signature</p> <p>Elizabeth A. CASBEER Printed Name</p> <p>REG. /COMP. Title</p> <p>8/6/98 Date</p>
	<p>SURVEYOR CERTIFICATION</p> <p>I hereby certify that the well location shown on this plat was plotted from field notes of actual surveys made by me or under my supervision, and that the same is true and correct to the best of my belief.</p> <p>JULY 20, 1998</p> <p>Date Surveyed</p> <p>Signature &amp; Seal of Professional Surveyor</p> <p><i>Ronald J. Eidson</i> 7-23-98 98-11-1046</p> <p>Certificate No. RONALD J. EIDSON 3239 GARY EIDSON 12641 MACON McDONALD 12185</p>

EXHIBIT 1

DRILLING OPERATIONS  
CLASS -1: NORMAL PRESSURE < 10PPG  
OPTION - 2: MMS STANDARD; SINGLE SIZE DRILL STRING



DRILLING OPERATIONS  
CHOKE MANIFOLD  
2M AND 3M SERVICE



## **BLOWOUT PREVENTION EQUIPMENT SPECIFICATIONS**

1. All BOP equipment shall be fluid and/or mechanically operated.
2. BOP's and all fittings will be in good working condition.
3. Equipment through which the bit must pass shall be at least as large as the casing size being drilled.
4. The nipple above the BOP shall be at least the same size as the last casing set.
5. The upper kelly cock with handle and lower kelly cock shall be rated at the BOP working pressure.
6. A floor safety valve (full opening) or drill string BOP with appropriate pressure ratings shall be available on the rig floor with connections or subs to fit any tool joint in the string.
7. The minimum size choke line shall be 3 inches nominal diameter, with a minimum size for vent lines downstream of chokes of 2 inches nominal, and vent lines which by-pass shall be a minimum of 3 inches nominal and as straight as possible.
8. All valves, fittings and lines between the closing unit and the blowout preventer stack should be of steel construction with rated working pressure at least equal to working pressure rating of the stack. Lines shall be bundled and protected from damage.
9. Minimum size for kill line is 2 inches nominal.
10. Ram type preventers shall be equipped with extension hand wheels or hydraulic locks.