

DISTRICT I
P.O. Box 1980, Hobbs, NM 88241-1980

DISTRICT II
P.O. Drawer DD, Artesia, NM 88211-0719

DISTRICT III
1000 Rio Brazos Rd., Aztec, NM 87410

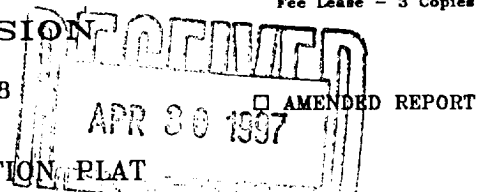
DISTRICT IV
P.O. Box 2088, Santa Fe, NM 87504-2088

State of New Mexico
Energy, Minerals and Natural Resources Department

Form C-102
Revised February 10, 1994
Submit to Appropriate District Office
State Lease - 4 Copies
Fee Lease - 3 Copies

OIL CONSERVATION DIVISION

P.O. Box 2088
Santa Fe, New Mexico 87504-2088



WELL LOCATION AND ACREAGE DEDICATION PLAT

API Number 30-015-29751	Pool Code 96210	Pool Name Empire Yeso
Property Code 016394	Property Name STATE S-19	Well Number 6
OGRID No. 013837	Operator Name MACK ENERGY CORPORATION	Elevation 3662

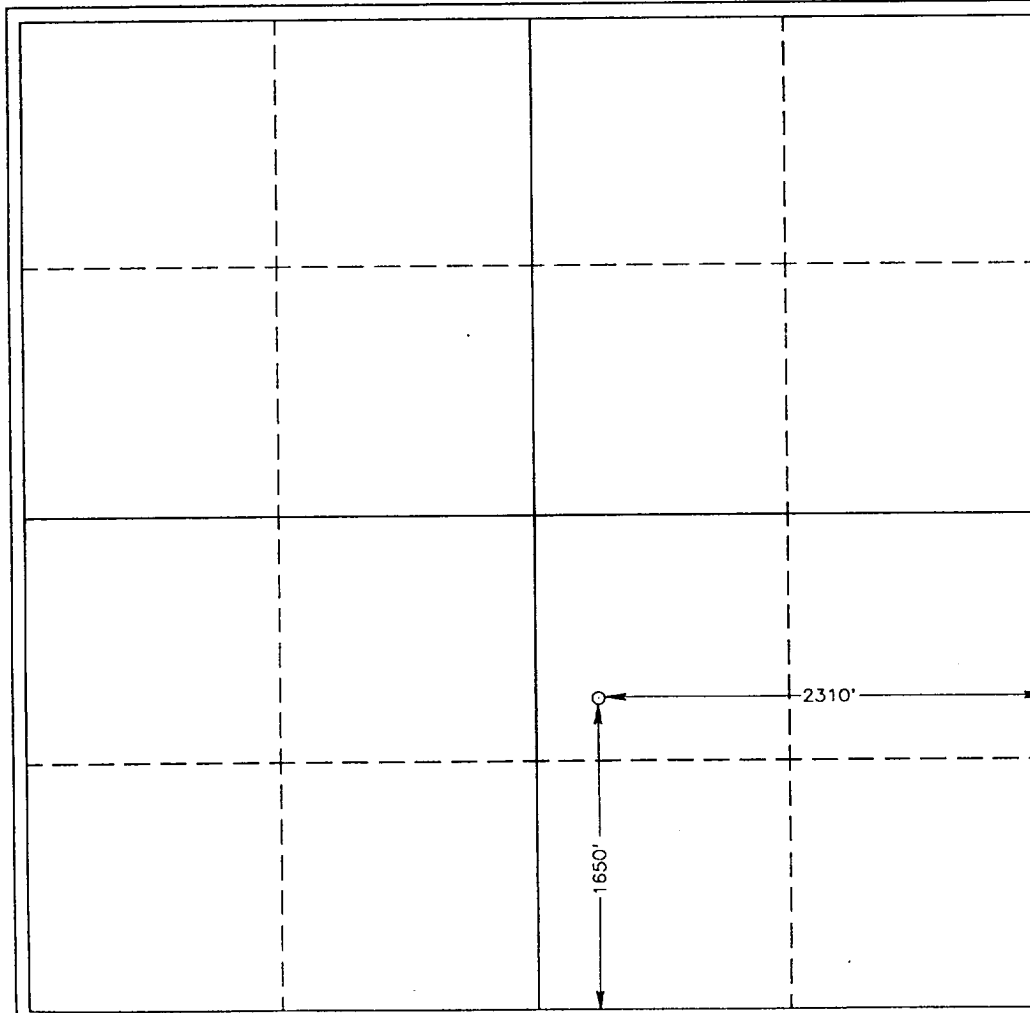
Surface Location

UL or lot No.	Section	Township	Range	Lot Idn	Feet from the	North/South line	Feet from the	East/West line	County
J	19	17 S	29 E		1650	SOUTH	2310	EAST	EDDY

Bottom Hole Location If Different From Surface

UL or lot No.	Section	Township	Range	Lot Idn	Feet from the	North/South line	Feet from the	East/West line	County
Dedicated Acres 40	Joint or Infill	Consolidation Code	Order No.						

NO ALLOWABLE WILL BE ASSIGNED TO THIS COMPLETION UNTIL ALL INTERESTS HAVE BEEN CONSOLIDATED
OR A NON-STANDARD UNIT HAS BEEN APPROVED BY THE DIVISION



OPERATOR CERTIFICATION

I hereby certify the information contained herein is true and complete to the best of my knowledge and belief.

Matt J. Brewer
Signature

Matt J. Brewer
Printed Name

Geological Engineer
Title

4/1/99
Date

SURVEYOR CERTIFICATION

I hereby certify that the well location shown on this plat was plotted from field notes of actual surveys made by me or under my supervision and that the same is true and correct to the best of my belief.

APRIL 21, 1997

Date Surveyed
Signature and Seal
Professional Surveyor

Ronald J. Eidson
Professional Surveyor
P.O. Box 97-1169723
Certification No. 3239
JLP
NEW MEXICO
APR 29 1997
EIDSON, 676
EIDSON, 3239
EIDSON, 12641