

N. M. Oil Cons. Division

Form 3160-3
01 (July 1992)8116-1ST ST
ARTESIA, NM 88006
REVERSE SIDEFORM APPROVED
OMB NO. 1004-0136
Expires: February 28, 1995UNITED STATES
DEPARTMENT OF THE INTERIOR
BUREAU OF LAND MANAGEMENT

APPLICATION FOR PERMIT TO DRILL OR DEEPEN

1A. TYPE OF WORK

DRILL ☒DEEPEN ☐

B. TYPE OF WELL

OIL
WELL ☒GAS
WELL ☐

OTHER

SINGLE
ZONE ☐MULTIPLE
ZONE ☐

2. NAME OF OPERATOR

Chi Operating, Inc.

4378

915/685-5001

3. ADDRESS AND TELEPHONE NO.

P. O. Box 1799

Midland, Texas 79702

4. LOCATION OF WELL (Report location clearly and in accordance with any State requirements.)*

At surface

2173' FSL & 1760' FWL

At proposed prod. zone

Same

Unit K

14. DISTANCE IN MILES AND DIRECTION FROM NEAREST TOWN OR POST OFFICE*

17 miles NE of Artesia, NM

15. DISTANCE FROM PROPOSED*

LOCATION TO NEAREST
PROPERTY OR LEASE LINE, FT.
(Also to nearest drig. unit line, if any)

996'

16. NO. OF ACRES IN LEASE

1040

17. NO. OF ACRES ASSIGNED
TO THIS WELL.

40

18. DISTANCE FROM PROPOSED LOCATION*
TO NEAREST WELL, DRILLING, COMPLETED,
OR APPLIED FOR, ON THIS LEASE, FT.

1117'

19. PROPOSED DEPTH

2000'

20. ROTARY OR CABLE TOOLS

Rotary

21. ELEVATIONS (Show whether DF, RT, GR, etc.)

3570' GL

22. APPROX. DATE WORK WILL START*

April 19, 1999

23.

PROPOSED CASING AND CEMENTING PROGRAM

SIZE OF HOLE	GRADE SIZE OF CASING	WEIGHT PER FOOT	SETTING DEPTH	QUANTITY OF CEMENT
12 1/4"	8 5/8" K-55	24.0# LTC	300' 790	Circ. 300 sx "to surface"
7 7/8"	5 1/2" K-55	15.5# LTC	2000'	Circ. 600 sx "to surface"

MUD PROGRAM:

0' - 300': Fresh water w/gel & lm:
300' - 2000': Brine mud w/gel:

MUD WT.

8.4- 9.0 ppg
9.5- 10.0 ppg

VIS.

32-38
30-35

W/L Control

No W/L control.
W/L control 10cc.

BOP PROGRAM:

A 10" 3000 psi wp Schaffer Type E double hydraulic BOP will be installed on the 8 5/8" casing. Casing and BOP will be tested before drilling out with 7 7/8". The BOP will be used as a 2000 psi wp system and will be tested daily. See Exhibit "E".

APPROVAL SUBJECT TO
GENERAL REQUIREMENTS AND
SPECIAL STIPULATIONS
ATTACHED

IN ABOVE SPACE DESCRIBE PROPOSED PROGRAM: If proposal is to deepen, give data on present productive zone and proposed new productive zone. If proposal is to drill or deepen directionally, give pertinent data on subsurface locations and measured and true vertical depths. Give blowout preventer program, if any.

24. Agent for:
Chi Operating, Inc. DATE March 31, 1999

SIGNED

Dee-Ann Smith

TITLE

(This space for Federal or State office use)

PERMIT NO.

APPROVAL DATE

Application approval does not warrant or certify that the applicant holds legal or equitable title to those rights in the subject lease which would entitle the applicant to conduct operations thereon.
CONDITIONS OF APPROVAL, IF ANY:

Acting

Assistant Field Office Manager,
Lands and Minerals

APPROVED BY

Larry D. Bray

TITLE

DATE

JUN 02 1999

*See Instructions On Reverse Side

Title 18 U.S.C. Section 1001, makes it a crime for any person knowingly and willfully to make to any department or agency of the United States any false, fictitious or fraudulent statements or representations as to any matter within its jurisdiction.

District I
PO Box 1990, Hobbs, NM 88240-1990
District II
PO Drawer DD, Artesia, NM 88211-0719
District III
1000 Rio Grande Rd., Aztec, NM 87410
District IV
PO Box 2088, Santa Fe, NM 87504-2088

State of New Mexico
Energy, Minerals & Natural Resources Department

OIL CONSERVATION DIVISION
PO Box 2088
Santa Fe, NM 87504-2088

Form C-102
Revised February 10, 1994
Instructions on back
Submit to Appropriate District Office
State Lease - 4 Copies
Fee Lease - 3 Copies

☐ AMENDED REPORT

WELL LOCATION AND ACREAGE DEDICATION PLAT

1 API Number		2 Pool Code		3 Well Name	
				Wildcat	
4 Property Code		5 Property Name			6 Well Number
		C V 14 FEDERAL			2
7 OGRID No.		8 Operator Name			9 Elevation
		CHI OPERATING, INC.			3570.

10 Surface Location

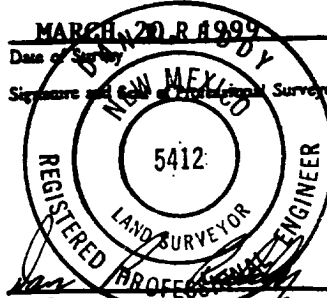
UL or lot no.	Section	Township	Range	Lot Idn	Feet from the	North/South line	Feet from the	East/West line	County
K	14	16-S	27-E		2173	SOUTH	1760	WEST	EDDY

11 Bottom Hole Location If Different From Surface

UL or lot no.	Section	Township	Range	Lot Idn	Feet from the	North/South line	Feet from the	East/West line	County

12 Dedicated Acres 40
13 Joint or Infill
14 Consolidation Code
15 Order No.

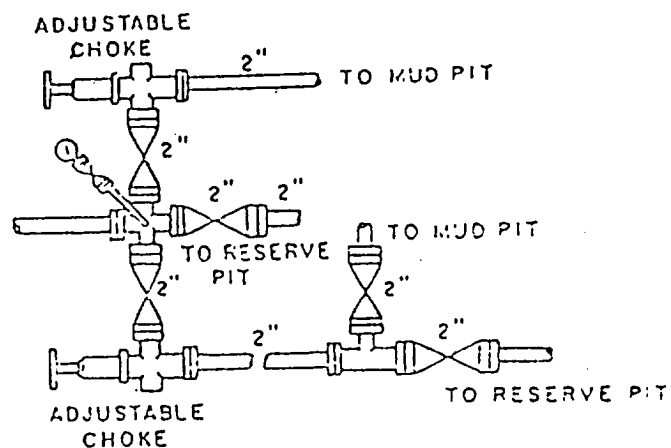
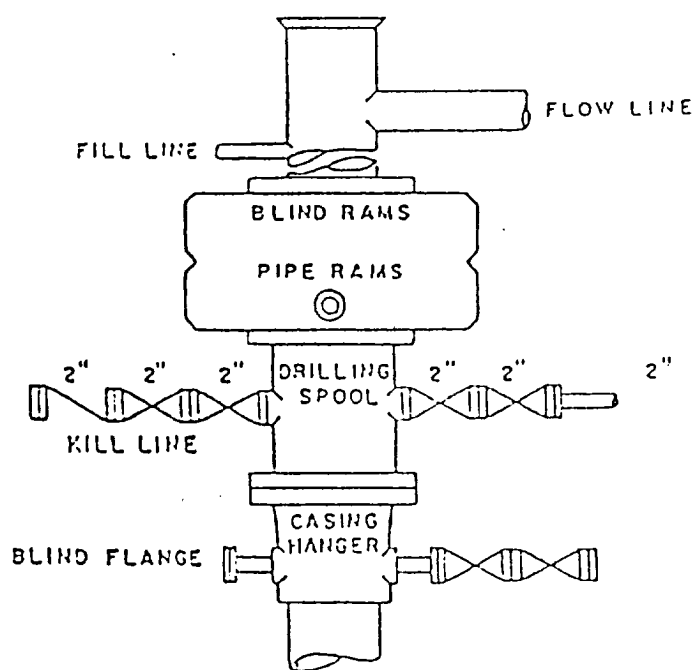
NO ALLOWABLE WILL BE ASSIGNED TO THIS COMPLETION UNTIL ALL INTERESTS HAVE BEEN CONSOLIDATED
OR A NON-STANDARD UNIT HAS BEEN APPROVED BY THE DIVISION

16				17 OPERATOR CERTIFICATION	
				I hereby certify that the information contained herein is true and complete to the best of my knowledge and belief.	
				<i>George R. Smith</i>	
				Signature	
				George R. Smith, agent for:	
				Printed Name	
				Chi Operating Inc.	
				Title	
				March 31, 1999	
				Date	
				18 SURVEYOR CERTIFICATION	
				I hereby certify that the well location shown on this plat was plotted from field notes of actual surveys made by me or under my supervision, and that the same is true and correct to the best of my belief.	
				MARCH 20, 1999	
				Date of Survey	
				Signature and Seal of Professional Surveyor	
					
				Certificate Number	
				NM PRAPS NO. 5412	

1760'

NM-84851
Collins & Ware et al

2173'



BOP DIAGRAM

3000# Working Pressure
Rams Operated Daily