

DISTRICT IV
P. O. Box 2088, Santa Fe, NM 87504-2088

P.O. Box 2088
Santa Fe, NM 87504-2088

Submit to Appropriate District Office

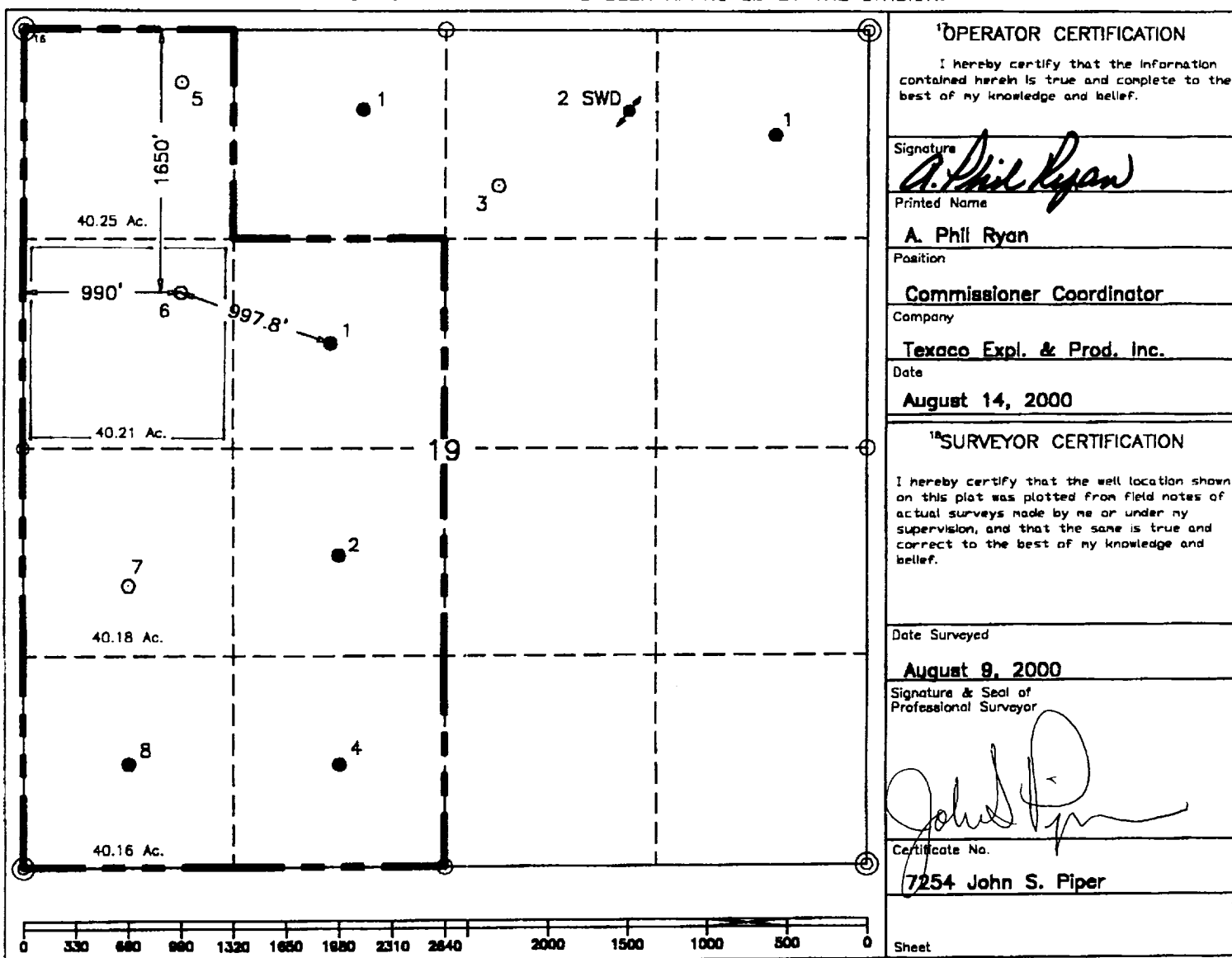
State Lease-4 copies
Fee Lease-3 copies

☐ AMENDED REPORT

WELL LOCATION AND ACREAGE DEDICATION PLAT

| | | | | | | | | | |
|--|-------------------------------|---|----------------------------------|---|-------------------------|---------------------------|-----------------------|---------------------------------|-----------------------------|
| ¹ API Number | | ² Pool Code | | ³ Pool Name Brushy Canyon, Delaware; Bone Springs | | | | | |
| ⁴ Property Code | | ⁵ Property Name Remuda Basin State | | | | | | ⁶ Well Number 6 | |
| ⁷ GRID No. | | ⁸ Operator Name TEXACO EXPLORATION & PRODUCTION, INC. | | | | | | ⁹ Elevation 3017' | |
| ¹⁰ Surface Location | | | | | | | | | |
| UL or lot no. E | Section 19 | Township 23-S | Range 30-E | Lot Idn | Feet from the 1650' | North/South line North | Feet from the 990' | East/West line West | ⁷ County Eddy |
| ¹¹ Bottom Hole Location If Different From Surface | | | | | | | | | |
| UL or lot no. | Section | Township | Range | Lot Idn | Feet from the | North/South line | Feet from the | East/West line | ⁷ County |
| ¹² Dedicated Acres 40.21 | ¹³ Joint or Infill | | ¹⁴ Consolidation Code | | ¹⁵ Order No. | | | | |

NO ALLOWABLE WILL BE ASSIGNED TO THIS COMPLETION UNTIL ALL INTERESTS HAVE BEEN CONSOLIDATED OR A NON-STANDARD UNIT HAS BEEN APPROVED BY THE DIVISION.



○ = Staked Location ● = Producing Well = Injection Well = Water Supply Well = Plugged & Abandon Well
 (○) = Found Section Corner, 2 or 3" Iron Pipe & GLO B.C. ○ = Found /4 Section Corner, 1" Iron Pipe & GLO B.C.

ADDITIONAL INFORMATION ON THE LOCATION

| | | | |
|---|----------------------|--|--------------|
| State Plane Coordinates | | Easting 625887.24 (1983=667070.45) | |
| Northing 470577.80 (1983=470637.31) | | Longitude 103°55'33.380" (1983=103°55'35.144") | |
| Latitude 32°17'35.080" (1983=32°17'35.520") | | Coordinate File | |
| Zone | North American Datum | Combined Grid Factor | Remuda27.cr5 |
| East | 1927 | .9997765 | |
| Drawing File | | Field Book | |
| RBState5.DWG | | Eddy Co. FB. 7, Pg. 65 | |