

UNITED STATES
DEPARTMENT OF THE INTERIOR
BUREAU OF LAND MANAGEMENT

N.M. Oil Cons. Division
811 S. 1st Street
Artesia, NM 88210-2834

FORM APPROVED
Budget Bureau No. 1004-0135
Expires: March 31, 1993

SUNDRY NOTICES AND REPORTS ON WELLS

Do not use this form for proposals to drill or to deepen or reentry to a different reservoir.

Use "APPLICATION FOR PERMIT --" for such proposals

SUBMIT IN TRIPLICATE

1. Type of Well: ☒ OIL WELL ☐ GAS WELL ☐ OTHER2. Name of Operator
TEXACO EXPLORATION & PRODUCTION INC.

3. Address and Telephone No. P.O. Box 3109, Midland Texas 79702 688-4606

4. Location of Well (Footage, Sec., T., R., M., or Survey Description)
Unit Letter H : 1769 Feet From The NORTH Line and 806 Feet From The
EAST Line Section 21 Township 17-S Range 31-E

5. Lease Designation and Serial No.

N.M. 1004-0135-00294420A

6. If Indian, Alottee or Tribe Name

7. If Unit or CA, Agreement Designation

8. Well Name and Number
SKELLY UNIT

906

9. API Well No.

30-015-31494

10. Field and Pool, Exploratory Area
LOCO HILLS, PADDOCK11. County or Parish, State
EDDY, NM

12. Check Appropriate Box(s) To Indicate Nature of Notice, Report, or Other Data

TYPE OF SUBMISSION

- ☐ Notice of Intent
- ☐ Subsequent Report
- ☐ Final Abandonment Notice

TYPE OF ACTION

- ☐ Abandonment
- ☐ Recompletion
- ☐ Plugging Back
- ☐ Casing Repair
- ☐ Altering Casing
- ☒ OTHER: Directional Well

- ☒ Change of Plans
- ☐ New Construction
- ☐ Non-Routine Fracturing
- ☐ Water Shut-Off
- ☐ Conversion to Injection
- ☐ Dispose Water

(Note: Report results of multiple completion on Well Completion or Recompletion Report and Log Form.)

13. Describe Proposed or Completed Operations (Clearly state all pertinent details, and give pertinent dates, including estimated date of starting any proposed work. If well is directionally drilled, give subsurface locations and measured and true vertical depths for all markers and zones pertinent to this work.)

THIS WELL WILL BE A DIRECTIONAL WELL. SURFACE HOLE LOCATION IS THE SAME LOCATION AND BOTTOM HOLE LOCATION WILL BE UNIT H, 2310' FNL, 990' FEL, SECTION 21, T-17-S, R-31-E.

CASING PROGRAM:

17 1/2"	K-55, 13 3/8"	8#	450'	290 SACKS	CIRCULATE
12 1/4"	K-55, 8 5/8"	4#	1600'	590 SACKS	CIRCULATE
7 7/8"	J-55, 5 1/2"	7#	5700'	680 SACKS	CIRCULATE

CEMENTING PROGRAM:

SURFACE CASING: 290 SACKS CLASS C w/2% GEL, 2% CaCl₂ (14.8 PPG, 1.34 CF/S, 6.40 GW/S).INTERMEDIATE CASING: 390 SACKS CLASS C w/2% GEL, 2% CaCl₂ (14.2 PPG, 1.50 CF/S, 6.30 GW/S). F/B 200 SACKS CLASS C w/2% GEL (14.8 PPG, 1.34 CF/S, 6.40 GW/S).

PRODUCTION CASING: 480 SACKS 35/65 POZ CLASS H w/6% GEL, 5% SALT, 1/4# FC (12.4 PPG, 2.14 CF/S, 10.46 GW/S). F/B 200 SACKS 50/50 POZ CLASS H w/2% GEL, 5% SALT, 1/4# FC (14.2 PPG, 1.35 CF/S, 6.30 GW/S).

ATTACHMENT: C-102

14. I hereby certify that the foregoing is true and correct.

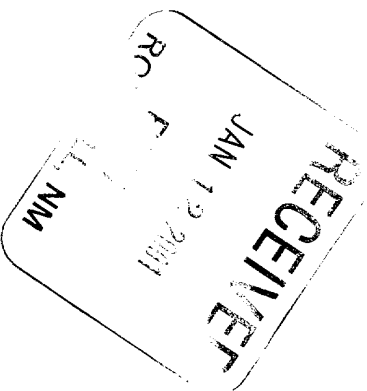
SIGNATURE A. Phil Ryan TITLE Commission Coordinator DATE 1/11/01TYPE OR PRINT NAME A. Phil Ryan

(This space for Federal or State office use)

APPROVED BY (ORIG. SGN.) ALEXIS C. SWOBODA TITLE PETROLEUM ENGINEER DATE JAN 11 2001

CONDITIONS OF APPROVAL, IF ANY:

Title 18 U.S.C. Section 1001, makes it a crime for any person knowingly and willfully to make to any department or agency of the United States any false, fictitious or fraudulent statements or representations as to any matter within its jurisdiction.



DISTRICT I
P. O. Box 1980, Hobbs, NM 88240

DISTRICT II
P. O. Drawer DD, Artesia, NM 88210

DISTRICT III
1000 Rio Brazos Rd., Aztec, NM 87410

DISTRICT IV
P. O. Box 2088, Santa Fe, NM 87504-208

State of New Mexico
Energy, Minerals and Natural Resources Department

OIL CONSERVATION DIVISION

PO Box 2088
Santa Fe, NM 87504-2088

Form C-102
Revised February 10, 1994

Instructions on back

Submit to Appropriate District Office

State Lease-4 copies

Fee Lease-3 copies

☐ AMENDED REPORT

WELL LOCATION AND ACREAGE DEDICATION PLAT

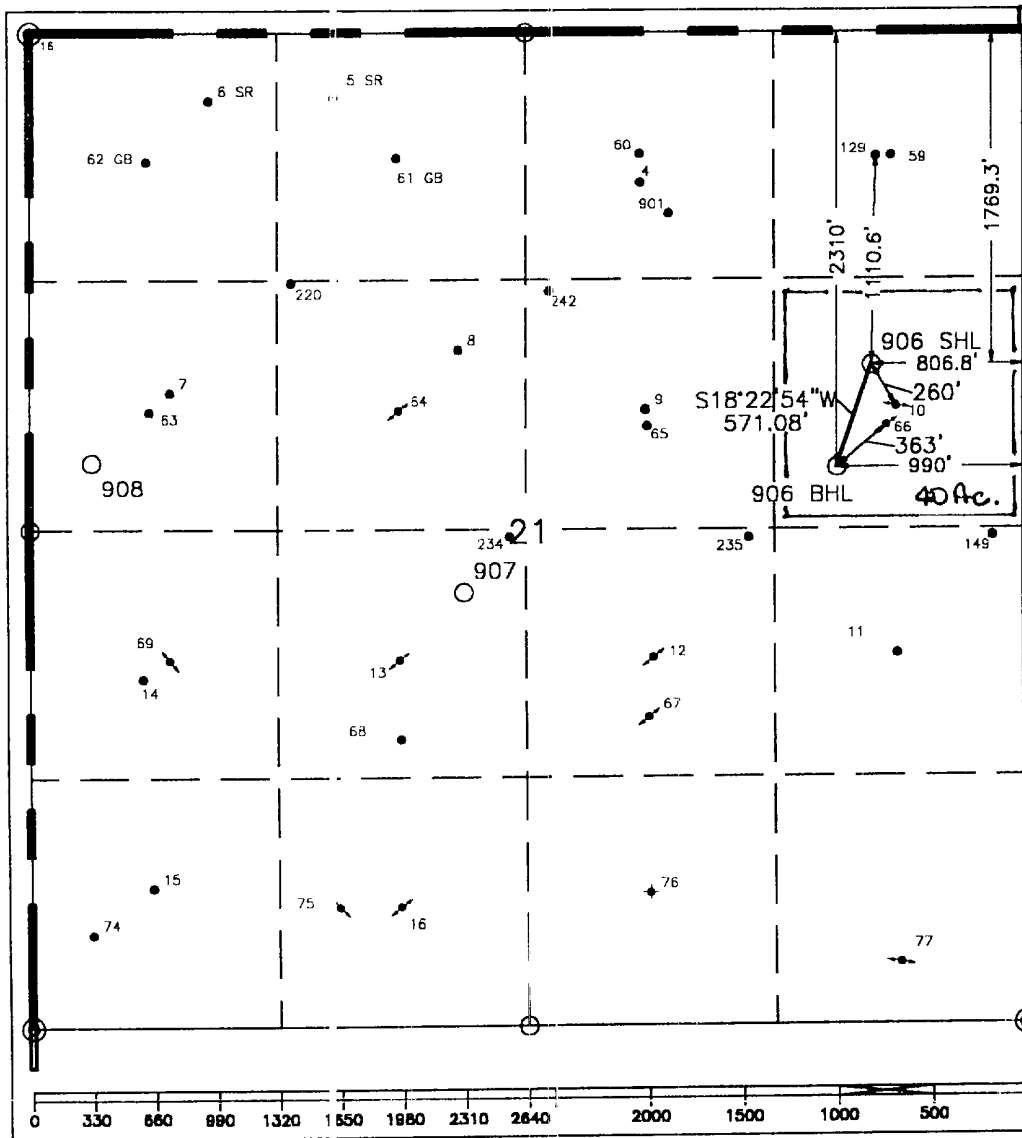
¹ API Number		² Pool Code		³ Pool Name Loco Hills, Paddock	
⁴ Property Code		⁵ Property Name Skelly Unit			⁶ Well Number 906
⁷ OGRID No.		⁸ Operator Name TEXACO EXPLORATION & PRODUCTION, INC.			⁹ Elevation 3832'

¹⁰ Surface Location									
UL or lot no. H	Section 21	Township 17-S	Range 31-E	Lot Idn	Feet from the 1769.3'	North/South line North	Feet from the 806.8'	East/West line East	⁷ County Eddy

¹¹ Bottom Hole Location If Different From Surface									
UL or lot no. H	Section 21	Township 17-S	Range 31-E	Lot Idn	Feet from the 2310'	North/South line North	Feet from the 990'	East/West line East	⁷ County Eddy

¹² Dedicated Acres 40	¹³ Joint or Infill	¹⁴ Consolidation Code	¹⁵ Order No.
-------------------------------------	-------------------------------	----------------------------------	-------------------------

NO ALLOWABLE WILL BE ASSIGNED TO THIS COMPLETION UNTIL ALL INTERESTS HAVE BEEN CONSOLIDATED
OR A NON-STANDARD UNIT HAS BEEN APPROVED BY THE DIVISION.



¹⁶ OPERATOR CERTIFICATION	
I hereby certify that the information contained herein is true and complete to the best of my knowledge and belief.	
Signature	<i>A. Phil Ryan</i>
Printed Name	A. Phil Ryan
Position	Commissioner Coordinator
Company	Texaco Expl. & Prod. Inc.
Date	January 10, 2000
¹⁷ SURVEYOR CERTIFICATION	
I hereby certify that the well location shown on this plat was plotted from field notes of actual surveys made by me or under my supervision, and that the same is true and correct to the best of my knowledge and belief.	
Date Surveyed	July 17, 2000
Signature & Seal of Professional Surveyor	<i>John S. Piper</i>
Certificate No.	7254 John S. Piper
Sheet	

○ = Staked Location ● = Producing Well ↗ = Injection Well ⊕ = Water Supply Well ⊛ = Plugged & Abandon Well
⊙ = Found Section Corner, 2 or 3" Iron Pipe & GLO B.C. ○ = Found 1/4 Section Corner, 1" Iron Pipe & GLO B.C.

ADDITIONAL INFORMATION ON THE LOCATION

State Plane Coordinates 662716.61 (1927=662652.70) BHL Northing 663258.56 (1927=663194.64) SHL		683894.11 (1927=642715.48) BHL Easting 684074.20 (1927=642895.58) SHL	
32°49'15.512" (1927=32°49'15.087") BHL Latitude 32°49'20.867" (1927=32°49'20.442") SHL		103°52'09.391" (1927=103°52'07.568") BHL Longitude 103°52'07.252" (1927=103°52'05.429") SHL	
Zone	North American Datum	Combined Grid Factor	Coordinate File
East	1983	0.9997675	Skelly.cr5
Drawing File Skelly 907.dwg		Field Book Eddy County 7 Pg. 53	

