

UNITED STATES
DEPARTMENT OF THE INTERIOR
BUREAU OF LAND MANAGEMENTSUBMIT IN TRIPLICATE
(Other instructions on
reverse side)FORM APPROVED
OMB NO. 1004-0136
Expires: February 28, 1995

APPLICATION FOR PERMIT TO DRILL OR DEEPEN

1a. TYPE OF WORK DRILL <input checked="" type="checkbox"/> DEEPEN <input type="checkbox"/>		5. LEASE DESIGNATION AND SERIAL NO. NM14847
b. TYPE OF WELL OIL WELL <input checked="" type="checkbox"/> GAS WELL <input type="checkbox"/> OTHER <input type="checkbox"/> SINGLE ZONE <input checked="" type="checkbox"/> MULTIPLE ZONE <input type="checkbox"/>		6. IF INDIAN, ALLOTTEE OR TRIBE NAME
2. NAME OF OPERATOR Mewbourne Oil Company		7. UNIT AGREEMENT NAME 26905
3. ADDRESS AND TELEPHONE NO. P.O. Box 5270 Hobbs, NM 88241 (505)393-5905		8. FARM OR LEASE NAME, WELL NO. Empire "18" Federal #10
4. LOCATION OF WELL (Report location clearly and in accordance with any State requirements.) At surface 1980' FSL & 440' FWL At proposed prod. zone Same		9. API WELL NO. 30-015-31537
14. DISTANCE IN MILES AND DIRECTION FROM NEAREST TOWN OR POST OFFICE* 5 Miles West of Loco Hills		10. FIELD AND POOL, OR WILDCAT Empire Yeso
15. DISTANCE FROM PROPOSED* LOCATION TO NEAREST PROPERTY OR LEASE LINE, FT (Also to nearest drg. unit line, if any) 440	16. NO. OF ACRES IN LEASE 26.92	11. SEC., T., R., M., OR BLK. AND SURVEY OR AREA Sec. 18, T17S, R29E
17. NO. OF ACRES ASSIGNED TO THIS WELL 26.92	18. DISTANCE FROM PROPOSED LOCATION* TO NEAREST WELL, DRILLING, COMPLETED, OR APPLIED FOR, ON THIS LEASE, FT. 220'	12. COUNTY OR PARISH Eddy
19. PROPOSED DEPTH 5300	20. ROTARY OR CABLE TOOLS Rotary	13. STATE NM
21. ELEVATIONS (Show whether DF, RT, GR, etc.) 3677' GL		22. APPROX. DATE WORK WILL START* 12/15/00

23. PROPOSED CASING AND CEMENTING PROGRAM

SIZE OF HOLE	GRADE, SIZE OF CASING	WEIGHT PER FOOT	SETTING DEPTH	QUANTITY OF CEMENT
12-1/4"	J55, 8-5/8"	32#	5300	200 sacks circulated to surface
7-7/8"	J55, 5-1/2"	17#		700 sacks tie back into 8-5/8" csg.

- 1) Drilling Program
- 2) Surface Use and Operation Plan
- 3) Location and Elevation Plat (NMOCD Form C102)
- 4) Schematic Diagram Of Blowout Preventer and Choke Manifold (Exhibits 2A)
- 5) Map of Existing and Planned Access Road and location (Exhibits 3 & 3A)
- 6) List of Offset Wells
- 7) Proposed Drilling Rig Layout (Exhibit 5)
- 8) Proposed Production Facilities Layout (Exhibit 6)
- 9) Hydrogen Sulfide Contingency Plan (Exhibit 7)

APPROVAL SUBJECT TO
GENERAL REQUIREMENTS AND
SPECIAL STIPULATIONS

NSP -

for well to produce (ccm)

IN ABOVE SPACE DESCRIBE PROGRAM: If proposal is to deepen, give data on present productive zone and proposed new productive zone. If proposal is to drill or deepen directionally, give pertinent data on subsurface locations and measured and true vertical depths. Give blowout preventer program, if any.

24. SIGNED Terry Baker TITLE Drilling Foreman DATE 10/31/00

(This space for Federal or State office use)

PERMIT NO. _____ APPROVAL DATE _____

Application approval does not warrant or certify that the applicant holds legal or equitable title to those rights in the subject lease which would entitle the applicant to conduct operations thereon.
CONDITIONS OF APPROVAL, IF ANY:APPROVED BY Acting DATE 2001

*See Instructions On Reverse Side

Title 18 U.S.C. Section 1001, makes it a crime for any person knowingly and willfully to make to any department or agency of the United States any false, fictitious or fraudulent statements or representations as to any matter within its jurisdiction.

DISTRICT I
P.O. Box 1980, Hobbs, NM 88241-1980

DISTRICT II
P.O. Drawer DD, Artesia, NM 88211-0719

DISTRICT III
1000 Rio Brazos Rd., Aztec, NM 87410

DISTRICT IV
P.O. Box 2088, Santa Fe, NM 87504-2088

State of New Mexico
Energy, Minerals and Natural Resources Department

Form C-102
Revised February 10, 1994
Submit to Appropriate District Office
State Lease - 4 Copies
Fee Lease - 3 Copies

OIL CONSERVATION DIVISION

P.O. Box 2088
Santa Fe, New Mexico 87504-2088

☐ AMENDED REPORT

WELL LOCATION AND ACREAGE DEDICATION PLAT

API Number	Pool Code	Pool Name
Property Code	Property Name EMPIRE "18" FEDERAL	Well Number 10
OGRID No.	Operator Name MEWBOURNE OIL CO.	Elevation 3677

Surface Location

UL or lot No.	Section	Township	Range	Lot Idn	Feet from the	North/South line	Feet from the	East/West line	County
LOT 3	18	17 S	29 E		1980	SOUTH	440	WEST	EDDY

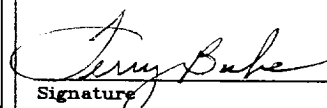
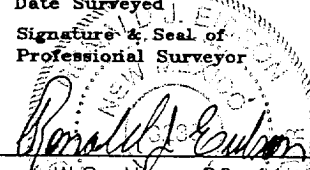
Bottom Hole Location If Different From Surface

UL or lot No.	Section	Township	Range	Lot Idn	Feet from the	North/South line	Feet from the	East/West line	County
Dedicated Acres	Joint or Infill	Consolidation Code	Order No.						
26.92									

NO ALLOWABLE WILL BE ASSIGNED TO THIS COMPLETION UNTIL ALL INTERESTS HAVE BEEN CONSOLIDATED
OR A NON-STANDARD UNIT HAS BEEN APPROVED BY THE DIVISION

LOT 1 26.69 AC.									
LOT 2 26.81 AC.									
LOT 3 26.92 AC. 3678.1' - 3676.7' 440' - 3670.6' 3683.9'									
LOT 4 27.04 AC. 1980'									

Lease#14847

OPERATOR CERTIFICATION	
I hereby certify that the information contained herein is true and complete to the best of my knowledge and belief.	
Signature	
Printed Name	Terry Burke
Title	Drilling Foreman
Date	October 31, 2000
SURVEYOR CERTIFICATION	
I hereby certify that the well location shown on this plat was plotted from field notes of actual surveys made by me or under my supervision, and that the same is true and correct to the best of my belief.	
SEPTEMBER 7, 2000	
Date Surveyed	JLP
Signature & Seal of Professional Surveyor	
W.O. Num.	00-11-1135
Certificate No.	RONALD J. EIDSON, 3239 GARY G. EIDSON, 12641 MAGON McDONALD, 12185

Drilling Program
Mewbourne Oil Company
Empire "18" Federal #10
1980'FSL & 440' FWL
Section 18- T17S-R29E
Eddy County, New Mexico
Lease Number NM14847

1. The estimated top of geological markers are as follows:

Yates	847'
Queen	1685'
San Andres	2380'
Glorietta	3800'
Yeso	3960'
Tubb	5292'

2. Estimated depths of anticipated fresh water, oil, or gas:

Water	Approximately 200'
Hydrocarbons	All zones below San Andres

3. Pressure control equipment:

Pressure tests will be conducted prior to drilling out from under surface string of casing. BOP controls will be installed prior to drilling under surface casing and will remain in use until completion of drilling operations. BOP's will be inspected and operated daily to insure mechanical integrity and the inspection will be recorded on the daily drilling report.

Kelly cock and a sub equipped with a full opening valve sized to fit the drill pipe and collars will be available on the rig floor in the open position when the kelly is not in use.

4. Proposed casing and cementing program:

A. Casing Program:

<u>Hole Size</u>	<u>Casing</u>	<u>Wt/Ft.</u>	<u>Grade</u>	<u>Depth</u>
12-1/4"	8-5/8"	32#	J55	0-400'
7-7/8"	5-1/2"	17#	N80	0-5300'

Drilling Program

Mewbourne Oil Company

Empire "18" Federal #10

Page 2

Minimum casing design factors: Collapse 1.125, Burst 1.0, Tensile strength 1.8.

B. Cementing Program

- i. Surface Casing: 100 sacks Class "C" light cement containing ½ #/sk cellophane flakes, 3% CaCl, 5 lbs/sack gilsonite. 100 sacks Class "C" penmen containing 3% CaCl.
- ii. Production Casing: 500 sacks 35:65 pozmix cement containing 6% gel, 5 lbs/sack gilsonite. 200 sacks Class "C" cement containing 2% CaCl.

**Mewbourne Oil Company reserves the right to change cement designs as hole conditions may warrant.*

5. Mud Program:

<u>Interval</u>	<u>Type System</u>	<u>Weight</u>	<u>Viscosity</u>	<u>Fluid Loss</u>
0'-400'	FW spud mud	8.6-9.4	32-34	NA
400'-5300'	Brine water	10.0-10.2	28-33	18-33cc

6. Evaluation Program:

Samples: 10'samples from surface casing to TD
Logging: Compensated density and dual laterlog from intermediate casing to TD
Coring: As needed for evaluation
Drill Stem Tests: As needed for evaluation

7. Downhole Conditions

Zones of abnormal pressure: None anticipated
Zones of lost circulation: Anticipated in surface and intermediate holes
Maximum bottom hole temperature: 140 degree F
Maximum bottom hole pressure: 8.3 lbs/gal gradient or less

8. Anticipated Starting Date:

Mewbourne Oil Company intends to drill this well as soon as possible after receiving approval with approximately 7 days involved in drilling operations and an additional 7 days involved in completion operations on the project.

MULTI-POINT SURFACE USE AND OPERATIONS PLAN
MEWBOURNE OIL COMPANY

Empire "18" Federal #10
1980' FSL & 440' FWL
Section 18-T17S-R29E
Eddy County, New Mexico
Lease Number NM14847

This plan is submitted with Form 3160-3, Application for Permit to Drill, Covering the above described well. The purpose of this plan is to describe the location of the proposed well, the proposed construction activities and operations plan, the magnitude of the surface disturbance involved, and the procedures to be followed in restoring the surface so that a complete appraisal can be made of the environmental impact associated with the proposed operations.

1. Existing Roads:

- A. Exhibit #3 is a road map showing the location of the proposed well. Exhibit #3A is a topographic map showing the location of the proposed well and access road. Existing roads are highlighted in yellow and proposed roads are highlighted in green.
- B. Directions to location: West from Loco Hills on Highway 82 approximately 8 miles turn North through cattle guard. Go North on main cacliche road 1.8 miles to Y in the road. Continue North for another 3/10 miles then turn East into location.

2. Proposed Access Road:

- A. The access road will be built from an existing lease road approximately 440' West of the location pad and will enter the location pad from the Southwest corner.
- B. The access to the location will be limited to 16' in width and will adequately drain runoff and control erosion as presently constructed.
- C. Access to location has an existing grade to facilitate adequate drainage.

3. Location of Existing Wells:

There are producing wells within the immediate vicinity of the well site. Exhibit #4 shows the proposed well and existing wells within a one mile radius.

4. Location of Existing and/or Proposed Facilities:

- A. There are no production facilities on this lease at the present time.
- B. In the event that the well is productive, production facilities will be located on the well pad.
- C. If the well is productive, restoration plans are as follows:

MULTI-POINT SURFACE USE AND OPERATIONS PLAN

MEWBOURNE OIL COMPANY

Empire "18" Federal #10

Page 2

- i. The reserve pit will be back-filled after the contents of the pit are allowed to dry (within 180 days after the well is completed).
- ii. Within 90 days of cessation of drilling and completion operations, all equipment not necessary for production operations will be removed. The location will be cleaned of all trash and junk to assure the well site is left as aesthetically pleasing as reasonably possible
- iii. All production vessels left on location will be painted to conform with BLM painting stipulations within 180 days of installation.

5. Location and Type of Water Supply

The well will be drilled with a combination of fresh water and brine water based mud systems. The water will be obtained from commercial suppliers in the area and hauled to the location by transport trucks over existing and proposed roads as indicated in Exhibit #3.

6. Source of Construction Materials

All material required for construction of the drill pad and access roads will be obtained from private, state, or federal pits. The construction contractor will be solely responsible for securing construction materials required for this operation and paying any royalties that may be required on those materials.

7. Methods of Handling Waste Disposal:

- A. Drill cuttings not retained for evaluation purposed will be disposed of in the reserve pit.
- B. Drilling fluids will be allowed to evaporate in the reserve pit prior to closure.
- C. Water produced during operations will be disposed of in the reserve pit.
- D. If any liquid hydrocarbons are produced during operations, those liquids will be stored in suitable tanks until sold.
- E. Current regulations regarding the proper disposal of human waste will be followed.
- F. All trash, junk, and other waste materials will be stored in proper containers to prevent dispersal and will be removed to an appropriate facility within one week of cessation of drilling and completion activities.

8. Ancillary Facilities

There are no ancillary facilities within the immediate vicinity of the proposed well site.

MULTI-POINT SURFACE USE AND OPERATIONS PLAN

MEWBOURNE OIL COMPANY

Empire "18" Federal #10

Page 3

9. Well Site Layout

- A. A diagram of the drill pad is shown in Exhibit #5. Dimensions of the pad, pits, and location of major rig components are shown.
- B. The reserve pit will be lined with a high quality plastic sheeting to prevent migration of fluids.
- C. The pad dimension of 400' X 400' has been staked and flagged.
- D. An archaeological survey has been conducted on the proposed access road and location pad.

10. Plans for Restoration of Surface

- A. Upon cessation of the proposed operations, if the well is abandoned, the location and road will be ripped and re-seeded per BLM guidelines. The reserve pit area, after allowing to dry will be leveled. The entire location will be restored to the original contour as much as reasonable possible. All trash, garbage, and pit lining will be hauled to appropriate disposal to assure the location is aesthetically pleasing as reasonable possible. All restoration work will be completed within 180 days of cessation of activities.
- B. The disturbed area will be restored by re-seeding during the proper growing season with a mixture of native grasses as stipulated by the BLM.
- C. Three sides of the reserve pit will be fenced prior to and during drilling operations. The reserve pit will be fenced on the fourth side after the drilling rig is removed to prevent the endangerment of livestock. The fence will remain in place until the pit area has been leveled and restored.
- D. Upon cessation of the proposed operations, if the well is not abandoned, the reserve pit area will be treated as outlined above within the prescribed amount of time. Any additional caliche required for production facilities will be obtained from a source as described in Section 6.

11. Surface Ownership:

The surface is owned by: Bureau of Land Management

12. Other Information

- A. Topography: Refer to the archaeological report for a detailed description of flora, fauna, soil characteristics, dwellings, and historical or cultural sites.
- B. The primary use of the surface at the location is for grazing of livestock.

MULTI-POINT SURFACE USE AND OPERATIONS PLAN

MEWBOURNE OIL COMPANY

Empire "18" Federal #10

Page 4

13. Operator's Representative:

A. Through APD approval and drilling operations:

Terry Burke, Drilling Foreman
Mewbourne Oil Company
PO Box 5270
Hobbs, NM 88241
505-393-5905

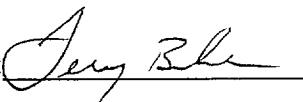
B. Through completion and production operations:

Mickey Young, District Manager
Mewbourne Oil Company
PO Box 5270
Hobbs, NM 88241
505-393-5905

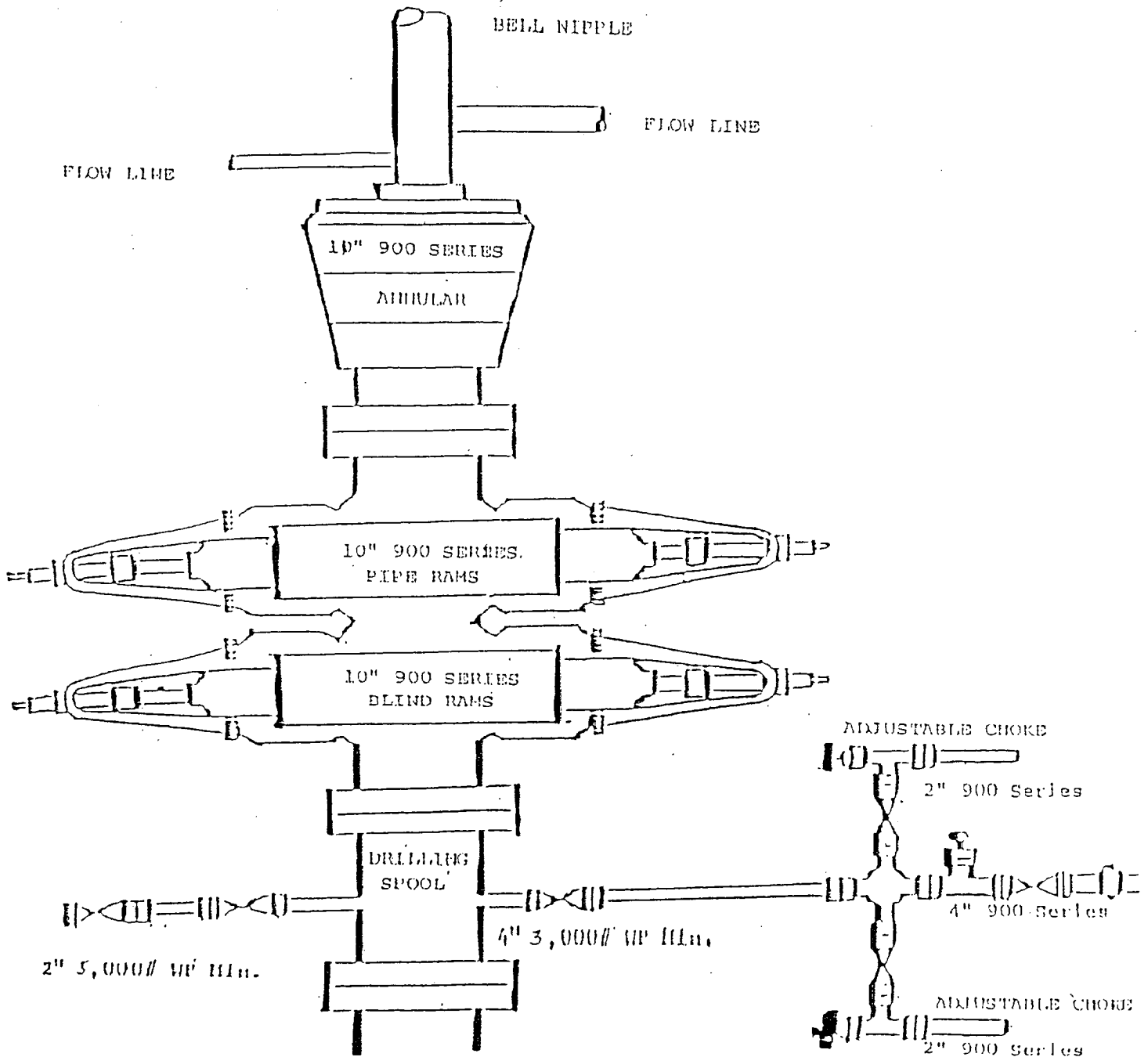
14. Certification

I hereby certify that I, or persons under my direct supervision, have inspected the proposed drill site and access route; that I am familiar with the conditions which currently exist; that the statements made in this plan are to the best of my knowledge, true and correct; and the work associated with the operations proposed herein will be performed by Mewbourne Oil Company, its contractors and subcontractors, in accordance with this plan and the terms and conditions under which it is approved. This statement is subject to the provisions of 18 U.S.C. 1001 for the filing of a false statement.

Date: 10-31-00

Signature: 

Terry Burke, Drilling Foreman
Mewbourne Oil Company
PO Box 5270
Hobbs, NM 88241
(505) 393-5905



Mewbourne Oil Company

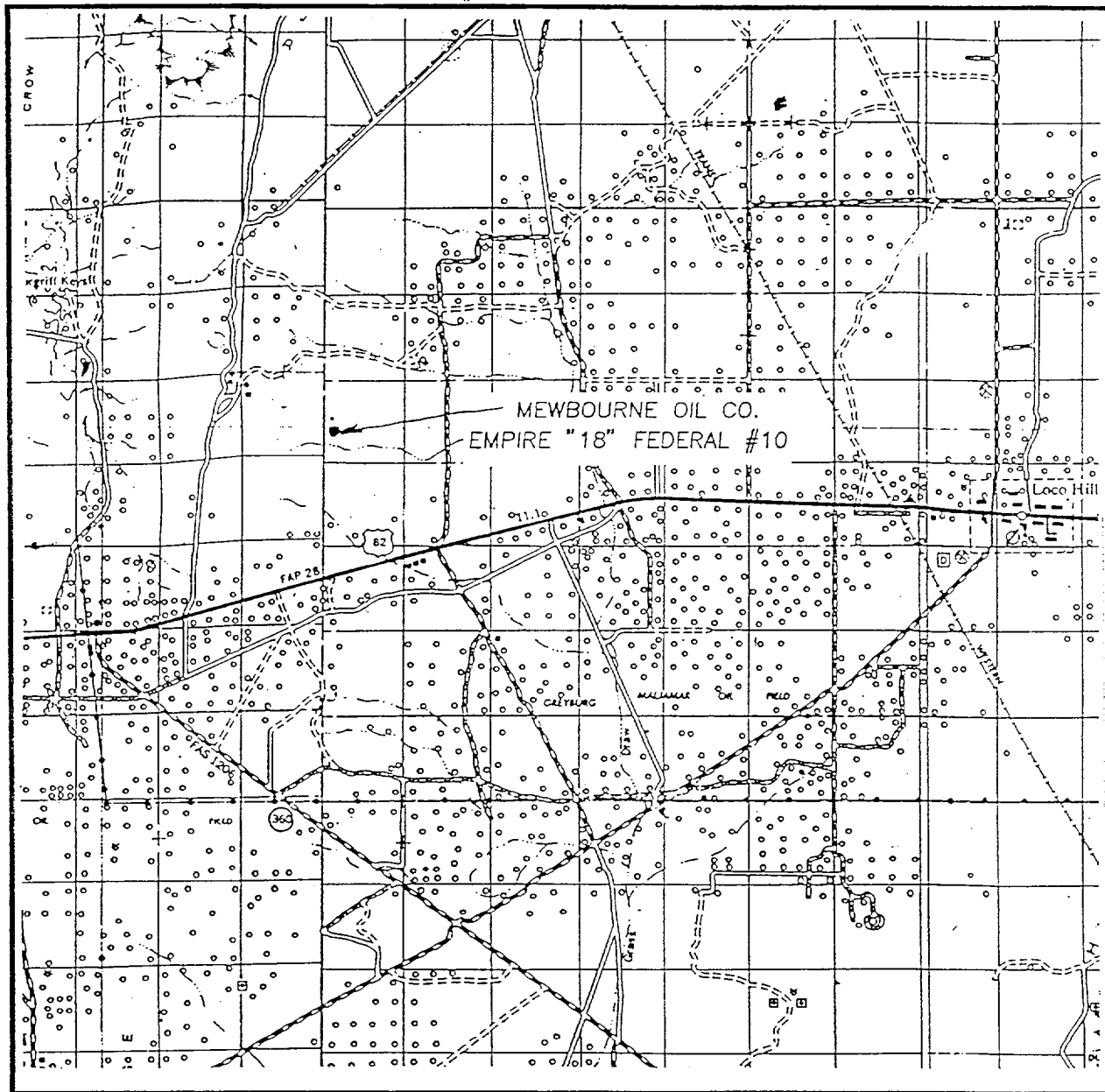
Exhibit #2A
Schematic of BOP for Production Hole

Empire "18" Federal #10
 Sec.18;T17S;R29E
 1980' FSL & 440' FWL
 Eddy County, NM
 Lease #NM14847

Notes Regarding Blowout Preventer
Mewbourne Oil Company

Empire "18" Federal #10
Sec.18;T17S;R29E
1980' FSL & 440' FWL
Eddy County, NM
Lease #NM14847

1. Drilling nipple (bell nipple) to be constructed so that it can be removed without the use of a welder through the opening of the rotary table, with minimum internal diameter equal to blowout preventer bore.
2. Blowout preventer and all fittings must be in good condition with a minimum 2000 psi working pressure.
3. Safety valve must be available on the rig floor at all times with proper connections to install in the drill string. Valve must be full bore with minimum 2000 psi working pressure.
4. Equipment through which bit must pass shall be at least as large as internal diameter of the casing.
5. A kelly cock shall be installed on the kelly at all times.
6. Blowout preventer closing equipment to include and accumulator of at least 40 gallon capacity, two independent sources of pressure on closing unit, and meet all other API specifications.



SCALE: 1" = 2 MILES

SEC. 18 TWP. 17-S RGE. 29-E

SURVEY N.M.P.M.

COUNTY EDDY

DESCRIPTION 1980' FSL & 440' FWL

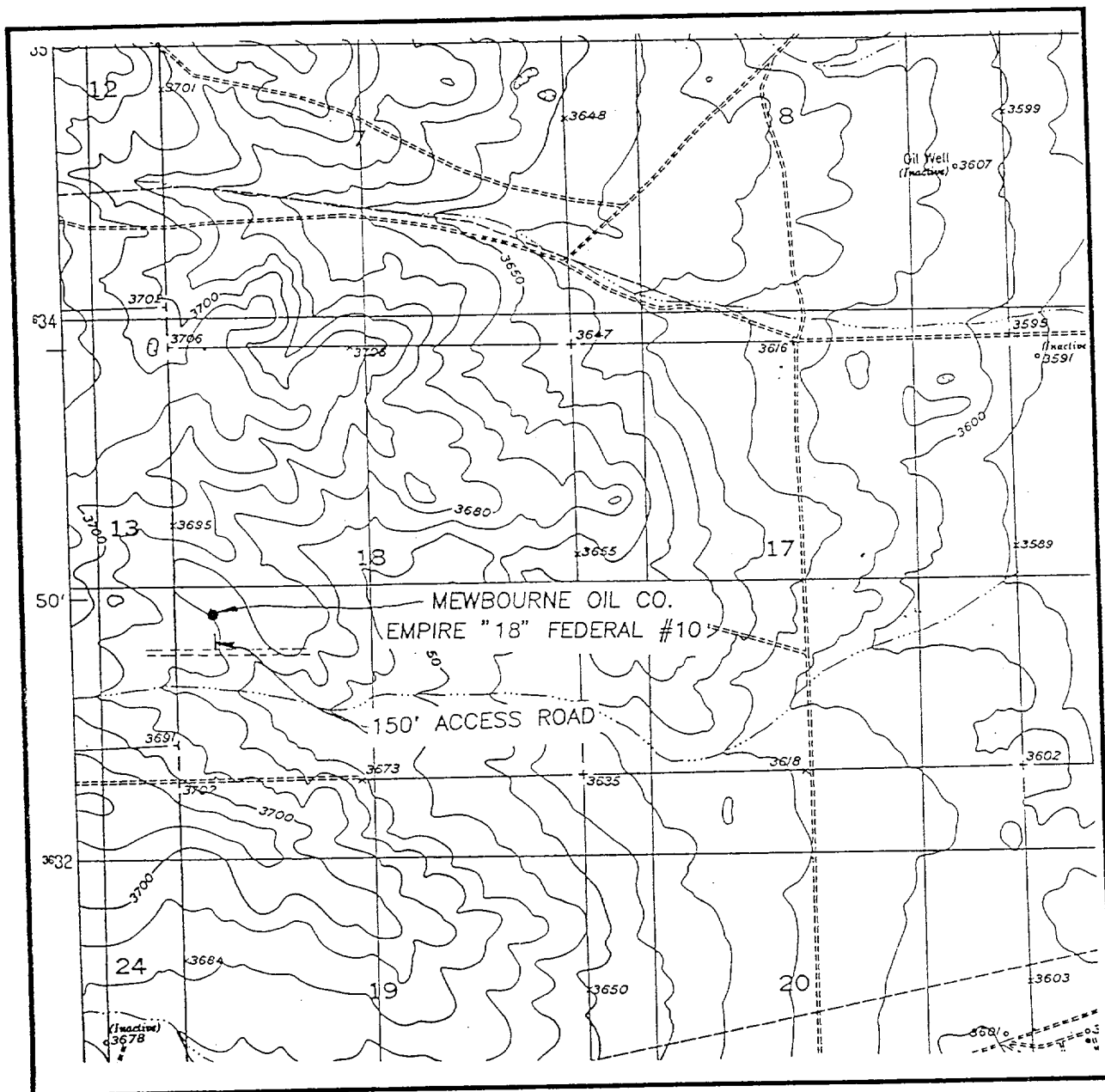
ELEVATION 3677

OPERATOR MEWBOURNE OIL CO.

LEASE EMPIRE "18" FEDERAL

Mewbourne Oil Company
Exhibit #3
Proposed Location Construction

Empire "18" Federal #10
 Sec. 18; T17S; R29E
 1980' FSL & 440' FWL
 Eddy County, NM
 Lease #NM14847



SCALE: 1" = 2000'

CONTOUR INTERVAL - 10'

SEC. 18 TWP. 17-S RGE. 29-E

SURVEY N.M.P.M.

COUNTY EDDY

DESCRIPTION 1980' FSL & 440' FWL

ELEVATION 3677

OPERATOR MEWBOURNE OIL CO.

LEASE EMPIRE "18" FEDERAL

U.S.G.S. TOPOGRAPHIC MAP

RED LAKE SE, N.M.

Mewbourne Oil Company

Exhibit #3A

Existing and Planned Road Access

Empire "18" Federal #10

Sec.18;T17S;R29E

1980' FSL & 440' FWL

Eddy County, NM

Lease #NM14847

Offset Yeso Wells

Empire "18" Federal #10

Sec.18;T17S;R29E

1980' FSL & 440' FWL

Eddy County, NM

Lease #NM14847

Mack Energy

Rincon State #2

20/17S/29E

990' FSL & 990' FEL

Eddy County, NM

Mack Energy

Mesquite State #6

20/17S/29E

2310' FSL & 1650' FWL

Eddy County, NM

Mack Energy

Mesquite State #2

20/17S/29E

2310' FSL & 990' FEL

Eddy County, NM

Mack Energy

Mesquite State #7

20/17S/29E

2310' FNL & 330' FWL

Eddy County, NM

Offset Yeso Wells

Empire "18" Federal #10

Sec.18;T17S;R29E

1980' FSL & 440' FWL

Eddy County, NM

Lease #NM14847

Mack Energy

Rincon State #4

20/17S/29E

2310' FSL & 2310' FEL

Eddy County, NM

Mack Energy

Mesquite State #5

20/17S/29E

1650' FSL & 2310' FWL

Eddy County, NM

Mack Energy

Rincon State #3

20/17S/29E

1650' FSL & 1650' FEL

Eddy County, NM

Marbob

Muskegon South #1

20/17S/29E

1650' FSL & 330' FEL

Eddy County, NM

Marbob

Muskegon South #2

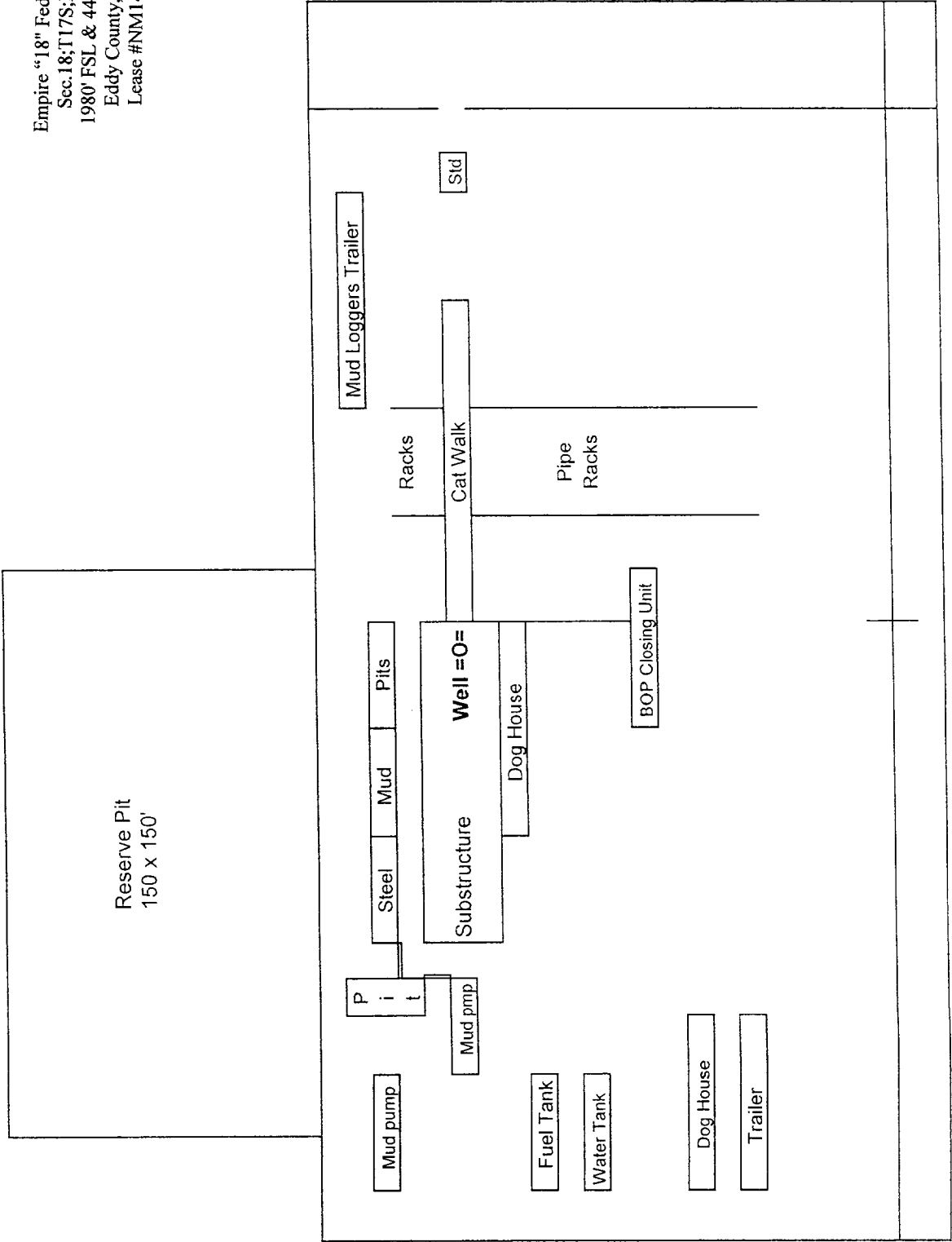
20/17S/29E

2310' FSL & 990' FEL

Eddy County, NM

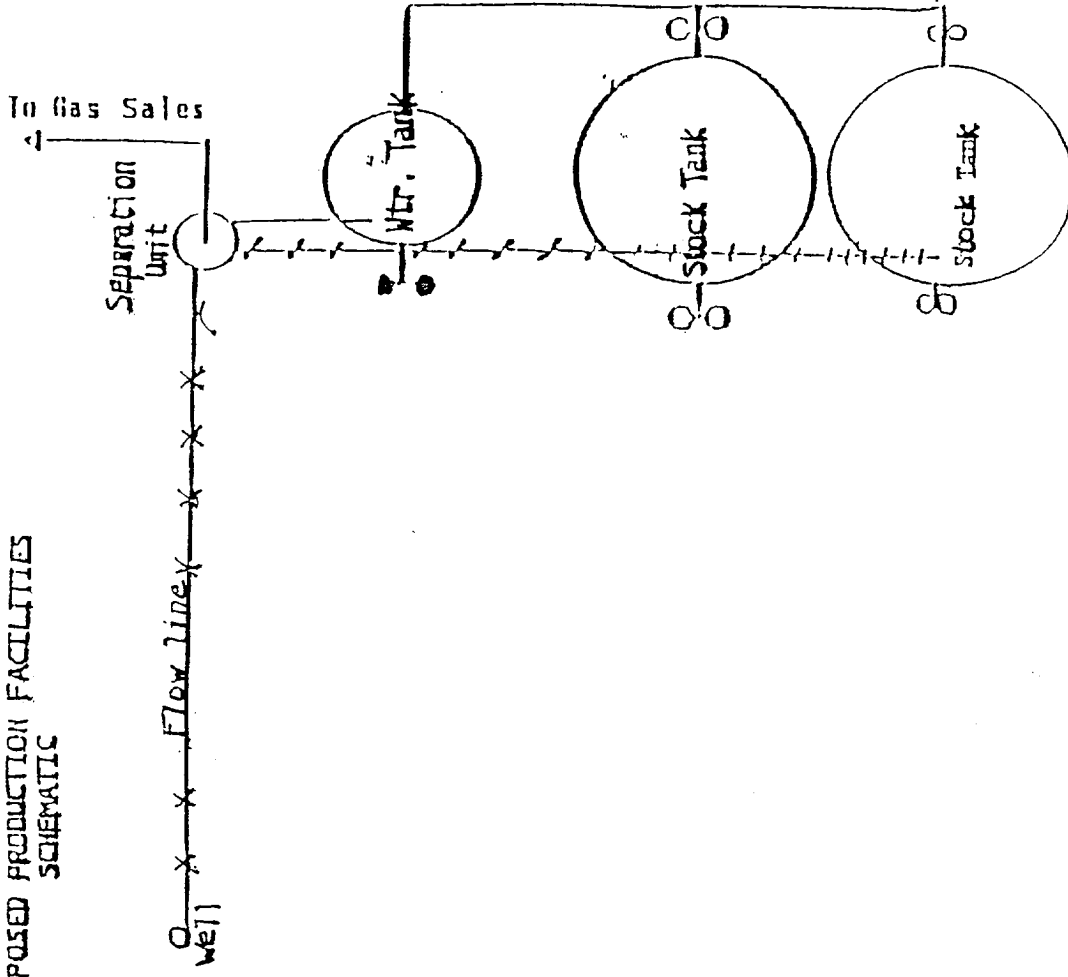
Mewbourne Oil Company

Empire "18" Federal #10
Sec.18;T17S;R29E
1980' FSL & 440' FWL
Eddy County, NM
Lease #NM14847



Rig Location Schematic

PROPOSED PRODUCTION FACILITIES SCHEMATIC



Flow line
Oil Dump Line -
Water line

Non sealing valve
Sealing valve

Mewbourne Oil Company

Exhibit #6

Proposed Production Facilities Schematic

Empire "18" Federal #10
Sec.18;T17S;R29E
1980' FSL & 440' FWL
Eddy County, NM
Lease #NM14847

Hydrogen Sulfide Drilling Operations Plan

Mewbourne Oil Company

Empire "18" Federal #10

1980' FSL & 440" FWL

Section 18- T17S-R29E

Eddy County, New Mexico

Lease Number NM14847

1. Hydrogen Sulfide Training

All personnel, whether regularly assigned, contracted, or employed on an unscheduled basis, will have received training from a qualified instructor in the following areas prior to entering the drilling pad area of the well:

- 1 The hazards and characteristics of hydrogen sulfide gas.
- 2 The proper use of personal protective equipment and life support systems.
- 3 The proper use of hydrogen sulfide detectors, alarms, warning systems, briefing areas, evacuation procedures.
- 4 The proper techniques for first aid and rescue operations.

Additionally, supervisory personnel will be trained in the following areas:

- 1 The effects of hydrogen sulfide on metal components. If high tensile tubular systems are utilized, supervisory personnel will be trained in their special maintenance requirements.
- 2 Corrective action and shut in procedures, blowout prevention, and well control procedures while drilling a well.
- 3 The contents of the Hydrogen Sulfide Drilling Operations Plan.

There will be an initial training session prior to encountering a known hydrogen sulfide source. The initial training session shall include a review of the site specific Hydrogen Sulfide Drilling Operations Plan.

2. Hydrogen Sulfide Safety Equipment and Systems

All hydrogen sulfide safety equipment and systems will be installed, tested, and operational prior to drilling below the intermediate casing.

1. Well Control Equipment

- A. Flare line with automatic igniter or continuous ignition source.
- B. Choke manifold with minimum of one adjustable choke.
- C. Blowout preventers equipped with blind rams and pipe rams to accommodate all pipe sizes with properly sized closing unit
- D. Auxiliary equipment including rotating head and annular type blowout preventer..

2. Protective Equipment for Essential Personnel

Thirty minute self contained work unit located at briefing area as indicated on wellsite diagram.

3. Hydrogen Sulfide Protection and Monitoring Equipment

Two portable hydrogen sulfide monitors positioned on location for optimum coverage and detection. The units shall have audible sirens to notify personnel when hydrogen sulfide levels exceed 20 ppm.

4. Visual Warning Systems

A. Wind direction indicators as indicated on the wellsite diagram.

B. Caution signs shall be posted on roads providing access to location. Signs shall be painted a high visibility color with lettering of sufficient size to be readable at reasonable distances from potentially contaminated areas.

3. **Mud Program**

The mud program has been designed to minimize the amount of hydrogen sulfide entrained in the mud system. Proper mud weight, safe drilling practices, and the use of hydrogen sulfide scavengers will minimize hazards while drilling the well.

4. **Metallurgy**

All tubular systems, wellheads, blowout preventers, drilling spools, kill lines, choke manifolds, and valves shall be suitable for service in a hydrogen sulfide environment when chemically treated.

5. **Communications**

Communications in company vehicles and toolpushers are either two way radios or cellular phones.

6. **Well Testing**

Drill stem testing is not an anticipated requirement for evaluation of this well. A drill stem test is required, it will be conducted with a minimum number of personnel in the immediate vicinity. The test will be conducted during daylight hours only.

**United States Department of the Interior
Bureau of Land Management
Roswell Field Office
2909 West Second Street
Roswell, New Mexico 88201-1287**

Statement Accepting Responsibility for Operations

Operator Name: Mewbourne Oil Company
Street or Box: P.O. Box 5570
City, State: Hobbs, New Mexico
Zip Code: 88241

Empire "18" Federal #10
Sec.18;T17S;R29E
1980' FSL & 440' FWL
Eddy County, NM
Lease #NM14847

The undersigned accepts all applicable terms, conditions, stipulations, and restrictions concerning operations conducted of the leased land or portion thereof, as described below.

Lease Number: Lease Number NM14847

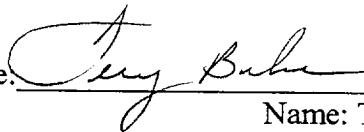
Legal Description of Land: Section 18, T17S, R29E, Eddy County, New Mexico. Location 1980' FSL & 440' FWL of Section 18.

Formation (if applicable):

Bond Coverage: \$150,000

BLM Bond File: NM1693, Nationwide

Authorized Signature: _____



Name: Terry Burke
Title: Drilling Foreman
Date: October 31, 2000