

District I  
1625 N. French Dr., Hobbs, NM 88240  
District II  
811 South First, Artesia, NM 88210  
District III  
1000 Rio Brazos Road, Aztec, NM 87410  
District IV  
2040 South Pacheco, Santa Fe, NM 87505

State of New Mexico  
Energy Minerals and Natural Resources

Form C-101  
Revised March 17, 1999

Oil Conservation Division  
2040 South Pacheco  
Santa Fe, NM 87505

Submit to appropriate District Office  
State Lease - 6 Copies  
Fee Lease - 5 Copies

☐ AMENDED REPORT

APPLICATION FOR PERMIT TO DRILL, RE-ENTER, DEEPEN, PLUG BACK, OR ADD A ZONE

Operator Name and Address CONCHO RESOURCES, INC. 110 WEST LOUISIANA SUITE 410 MIDLAND, TEXAS 79701		OGRID Number 166111
Property Code 27150		API Number 30-013-31356
Property Name RIFLEMAN "6" STATE		Well No. 1

Surface Location

UL or lot no.	Section	Township	Range	Lot Idn	Feet from the	North/South line	Feet from the	East/West line	County
P	6	22S	26E		720'	SOUTH	800'	EAST	EDDY

Proposed Bottom Hole Location If Different

UL or lot no.	Section	Township	Range	Lot Idn	Feet from the	North/South

Proposed Pool 1

Happy Valley-Morrow (78060)

NOTIFY OCD SPUD & TIME TO WITNESS  
& 9 5/8" CEMENTING OF CASING

Work Type Code N	Well Type Code G	Cable/Rotary ROTARY	Lease Type Code S	Ground Level Elevation 3608'
Multiple NO	Proposed Depth 11,500'	Formation MORROW	Contractor Unknown	Spud Date when approved

Proposed Casing and Cement Program

Hole Size	Casing Size	Casing weight/foot	Setting Depth	Sacks of Cement	Estimated TOC
25"	20"	Conductor	40'	Redi-mix	Surface
17 1/2"	16"	65	600'	600 Sx.	Surface
14 3/4"	9 5/8"	36	2250'	1500 Sx.	Surface
8 3/4"	5 1/2"	17	11,500'	2350 Sx.	Est. 2000'

Describe the proposed program. If this application is to DEEPEN or PLUG BACK, give the data on the present productive zone and proposed new productive zone. Describe the blowout prevention program, if any. Use additional sheets if necessary.

1. Drill 25" hole to 40'. Set 40' of 20" conductor and cement to surface with Redi-mix.
2. Drill 17 1/2" hole to 600'. Run and set 600' of 16" 65# H-40 ST&C casing. Cement with 600 Sx. of Class "C" cement + 2% CaCl + 1/4# Flocele/Sx. Circulate cement.
3. Drill 14 3/4" hole to 2250'. Run and set 2250' of 9 5/8" 36# J-55 ST&C casing. Cement with 200 Sx. of Class "C" Thixotropic cement + 10% Calseal, + 2% CaCl, follow with 950 Sx. of Class "C" Halco Light + 1/4# Flocele/Sx, + 1# Gilsonite/Sx. + 6% Gel, + 12% Salt, tail in with 350 Sx. of Class "C" + 2% CaCl circulate cement to surface. *Salt may not be used in Reef. B&B*
4. Drill 8 3/4" hole to 11,500'. Run and set 11,500' of 5 1/2" 17# S-95 LT&C casing. Cement in 2 stages: 1st stage cement with 1100 Sx. of Modified Super "H" + 4% CFR3, + 5# Gilsonite/Sx. + .5% Halad 344, + 3# Salt/Sx. 2nd stage cement with 1050 Sx. + additives tail in with 200 Sx. of class "C" + 2% CaCl, Estimate TOC 2000'.

I hereby certify that the information given above is true and complete to the best of my knowledge and belief.

Signature:

Printed name: Joe T. Janica

Title: Agent

Date: 01/15/01

Phone: 505-391-8503

OIL CONSERVATION DIVISION

Approved by:

ORIGINAL SIGNED BY T. W. CUM  
DISTRICT II SUPERVISOR

Title:

Approval Date:

JAN 18 2001

Expiration Date:

JAN 18 2002

Conditions of Approval:

Attached ☐

DISTRICT I  
P.O. Box 1980, Hobbs, NM 88241-1980

State of New Mexico  
Energy, Minerals and Natural Resources Department

Form C-102  
Revised February 10, 1994  
Submit to Appropriate District Office  
State Lease - 4 Copies  
Fee Lease - 3 Copies

DISTRICT II  
P.O. Drawer DD, Artesia, NM 88211-0719

DISTRICT III  
1000 Rio Brazos Rd., Aztec, NM 87410

DISTRICT IV  
P.O. BOX 2088, SANTA FE, N.M. 87504-2088

OIL CONSERVATION DIVISION  
P.O. Box 2088  
Santa Fe, New Mexico 87504-2088

☐ AMENDED REPORT

WELL LOCATION AND ACREAGE DEDICATION PLAT

API Number	Pool Code 78060	Pool Name HAPPY VALLEY - MORROW
Property Code	Property Name RIFLEMAN "6" STATE	Well Number 1
OGRID No. 166111	Operator Name CONCHO RESOURCES, INC.	Elevation 3608

Surface Location

UL or lot No. P	Section 6	Township 22S	Range 26E	Lot Idn	Feet from the 720	North/South line SOUTH	Feet from the 800	East/West line EAST	County EDDY
--------------------	--------------	-----------------	--------------	---------	----------------------	---------------------------	----------------------	------------------------	----------------

Bottom Hole Location If Different From Surface

UL or lot No.	Section	Township	Range	Lot Idn	Feet from the	North/South line	Feet from the	East/West line	County
Dedicated Acres 320	Joint or Infill	Consolidation Code	Order No.						

NO ALLOWABLE WILL BE ASSIGNED TO THIS COMPLETION UNTIL ALL INTERESTS HAVE BEEN CONSOLIDATED  
OR A NON-STANDARD UNIT HAS BEEN APPROVED BY THE DIVISION

LOT 4	LOT 3	LOT 2	LOT 1
LOT 5			
LOT 6			
LOT 7			

800'

720'

**OPERATOR CERTIFICATION**

I hereby certify that the information contained herein is true and complete to the best of my knowledge and belief.

*Joe T. Sanica*  
Signature

Joe T. Sanica  
Printed Name

Agent  
Title

01/15/01  
Date

**SURVEYOR CERTIFICATION**

I hereby certify that the well location shown on this plat was plotted from field notes of actual surveys made by me or under my supervision, and that the same is true and correct to the best of my belief.

DECEMBER 7, 2000

Date Surveyed

AWB

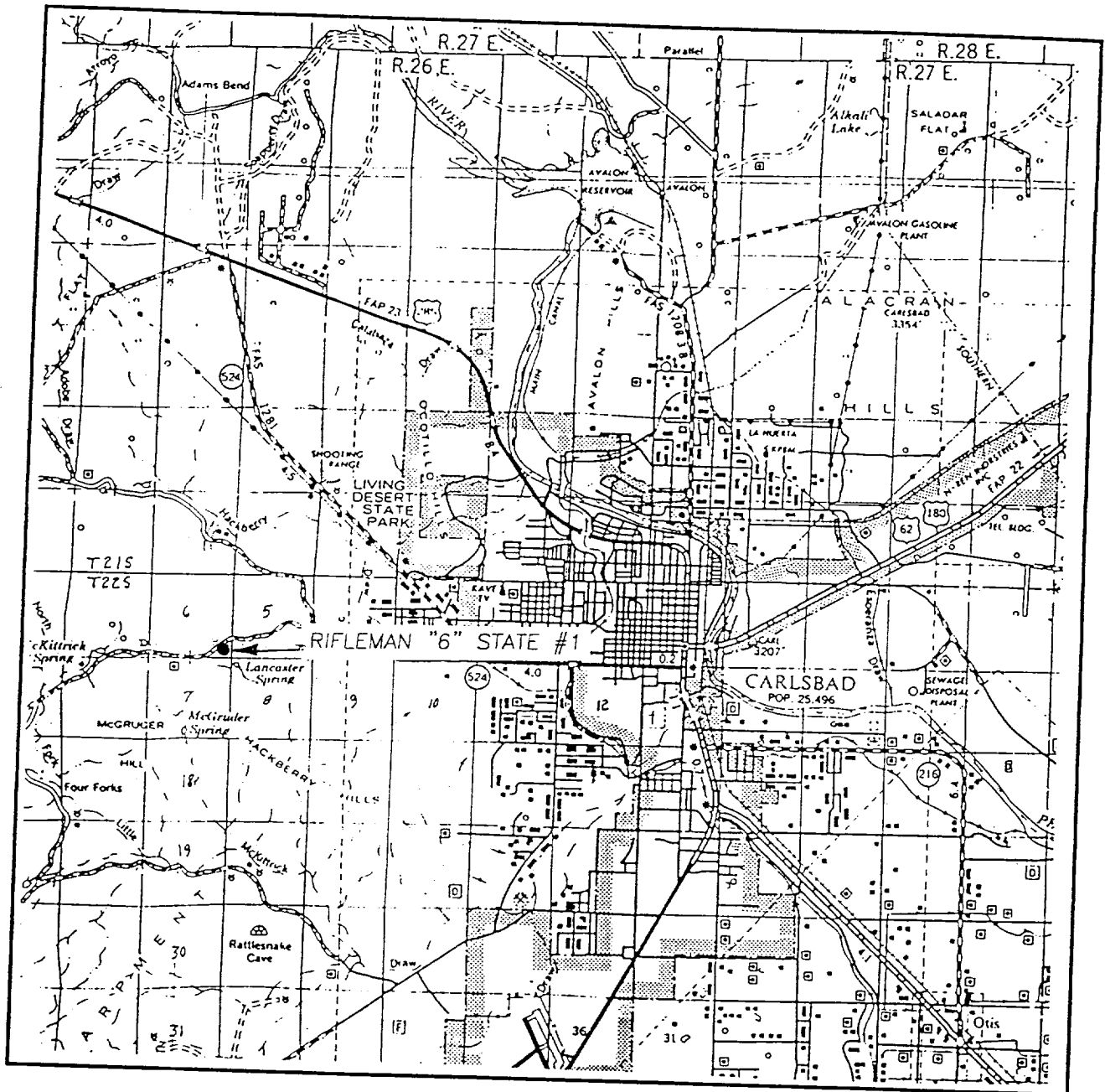
Signature & Seal of Professional Surveyor

*Gary Eidson* 12/14/00

CG-11-1576

Certificate No. RONALD J. EIDSON 3239  
GARY EIDSON 12641

# VICINITY MAP



SCALE: 1" = 2 MILES

SEC. 6 TWP. 22-S RGE. 26-E

SURVEY N.M.P.M.

COUNTY EDDY

DESCRIPTION 720' FSL & 800' FEL

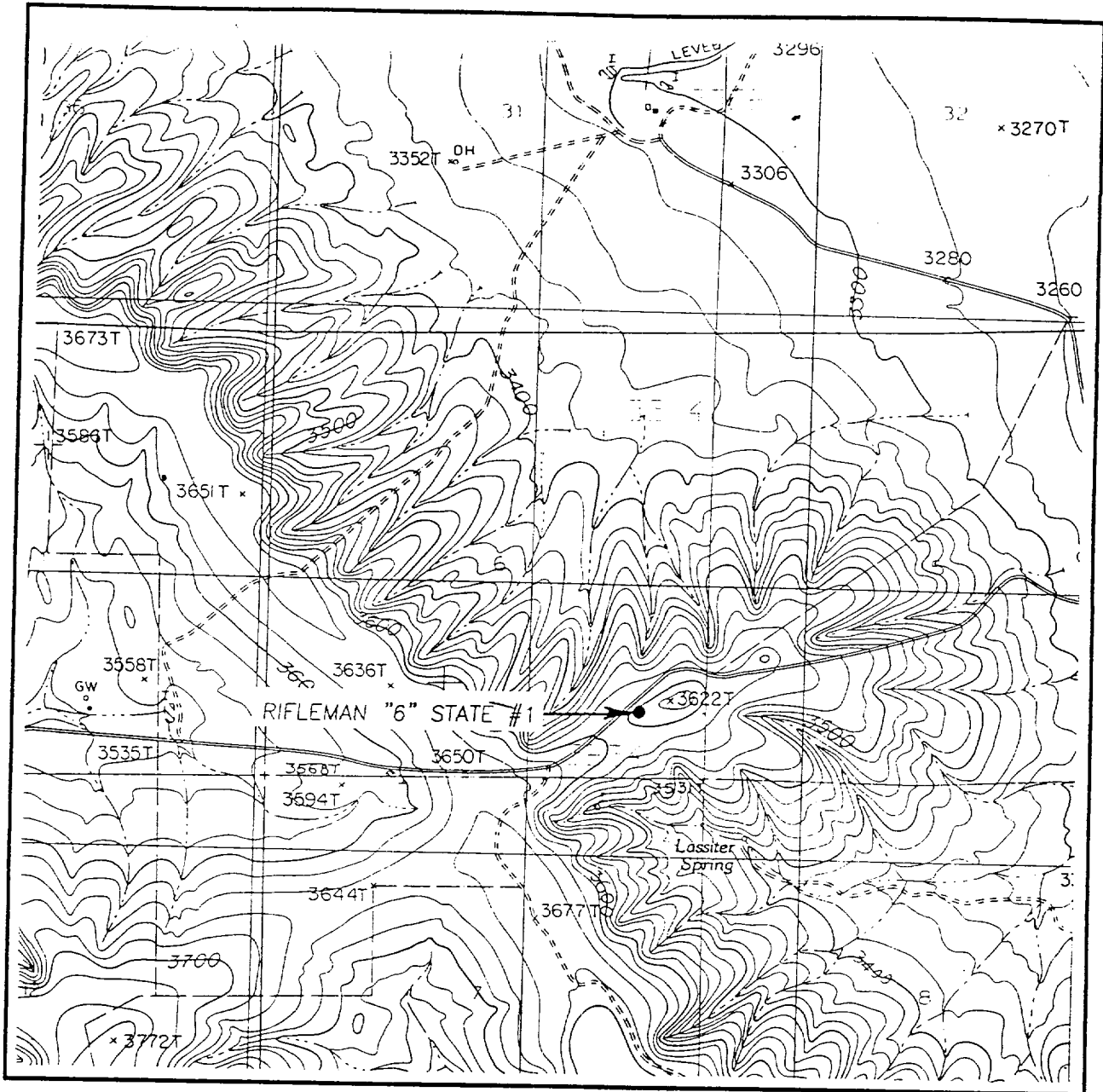
ELEVATION 3608

OPERATOR CONCHO RESOURCES, INC.

LEASE RIFLEMAN "6" STATE

JOHN WEST SURVEYING  
HOBBS, NEW MEXICO  
(505) 393-3117

# LOCAT ON VERFICAT ON MAP



SCALE: 1" = 2000'

CONTOUR INTERVAL: 20'

CARLSBAD WEST N.M.

SEC. 6 TWP. 22-S RGE. 26-E

SURVEY N.M.P.M.

COUNTY EDDY

DESCRIPTION 720' FSL & 800' FEL

ELEVATION 3608

OPERATOR CONCHO RESOURCES, INC.

LEASE RIFLEMAN "6" STATE

U.S.G.S. TOPOGRAPHIC MAP

CARLSBAD WEST N.M.

JOHN WEST SURVEYING  
HOBBS, NEW MEXICO  
(505) 393-3117

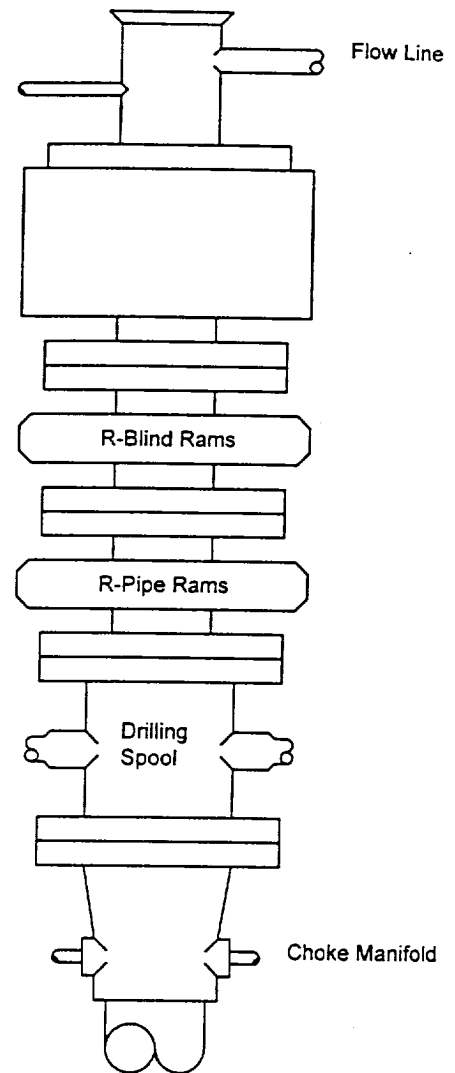
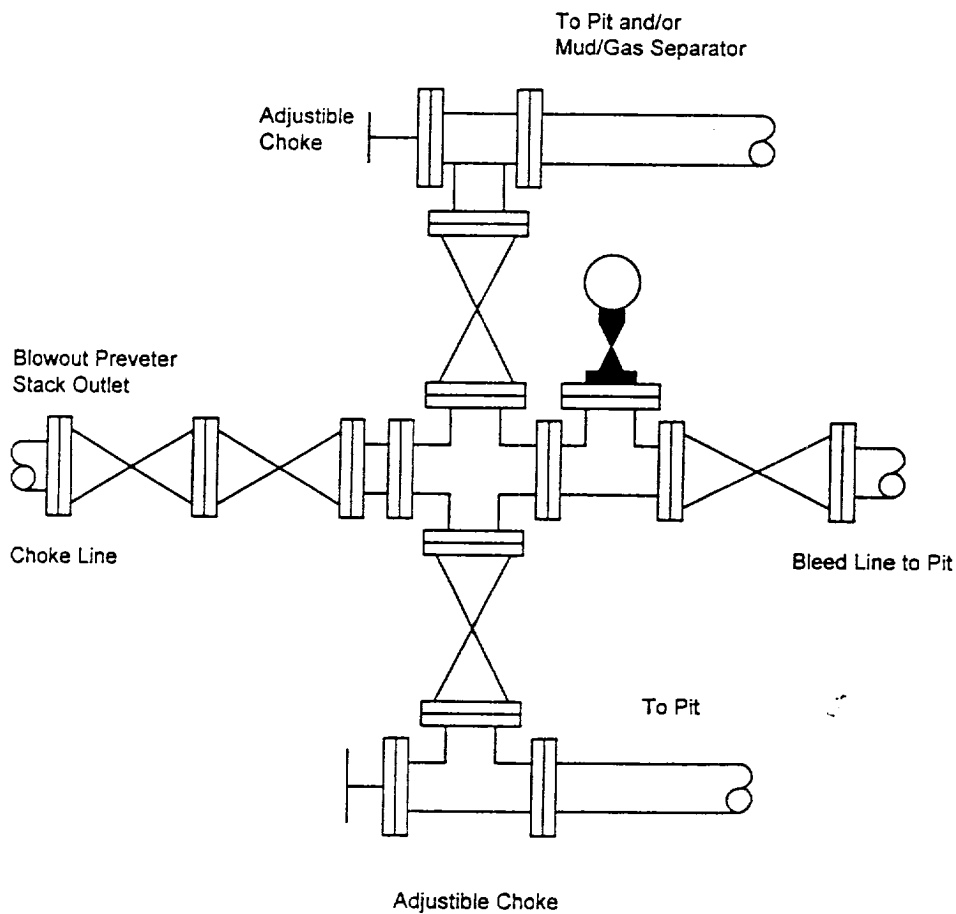
# BLOWOUT PREVENTER SYSTEM

5000 PSI

Fill Line

Flow Line

## Choke Manifold Assembly for 5M WP System



Type 900 Series  
5000 psi WP