

Form 150-3  
(August 1995)



# N. M. Oil Cons. Division

811 G. 157.27

ARTESIA, NM 87004

UNITED STATES  
DEPARTMENT OF THE INTERIOR  
BUREAU OF LAND MANAGEMENT

705

FORM APPROVED  
OMB No. 1004-0136  
Expires November 30, 2000

5. Lease Serial No.  
NM94610  
6. If Indian, Allottee or Tribe Name

## APPLICATION FOR PERMIT TO DRILL OR REENTER

1a. Type of Work: ☒ DRILL ☐ REENTER

7. If Unit or CA Agreement, Name and No.

26684

1b. Type of Well: ☐ Oil Well ☒ Gas Well ☐ Other ☐ Single Zone ☐ Multiple Zone

8. Lease Name and Well No.  
El Paso 13 Federal No. 2

2. Name of Operator  
EOG Resources, Inc.

9. API Well No.

30-015-31837

3a. Address  
P.O. Box 2267, Midland, TX 79702

3b. Phone No. (include area code)  
(915)686-3714

10. Field and Pool, or Exploratory  
Ross Draw (Wolfcamp)

4. Location of Well (Report location clearly and in accordance with any State requirements.)

At surface 1,980' FNL & 1,310' FWL (Unit Letter E)

11. Sec., T., R., M., or Blk. And Survey or Area  
Sec 13, T26S, R30E

At proposed prod. Zone Same as surface

14. Distance in miles and direction from nearest town or post office\*  
18 miles SE from Malaga

12. County or Parish  
Eddy

13. State  
NM

15. Distance from proposed\*  
location to nearest  
property or lease line, ft. 1,310'  
(Also to nearest drlg. Unit line, if any) same

16. No. of Acres in lease  
960

17. Spacing Unit dedicated to this well  
N/2

18. Distance from proposed location\*  
to nearest well, drilling, completed  
applied for, on this lease, ft. 2,700'

19. Proposed Depth  
13,000'

20. BLM/BIA Bond No. on file  
NM2308

21. Elevations (Show whether DF, KDB, RT, GL, etc)  
GL-3188

22. Approximate date work will start\*  
6/1/2001

23. Estimated duration  
30 days

## 24. Attachments

The following completed in accordance with the requirements of Onshore Oil and Gas Order No. 1, shall be attached to this form:

### Carlsbad Controlled Water Basin

- Well plat certified by a registered surveyor.
- A Drilling Plan.
- A Surface Use Plan (if the location is on National Forest System Lands, the SUPO shall be filed with the appropriate Forest Service Office)
- Bond to cover the operations unless covered by an existing bond on file (see Item 20 above)
- Operator certification.
- Such other site specific information and/or plans as may be required by the authorized officer.

25. Signature

Mike Francis

Name (Printed/Typed)

Mike Francis

Date

4/18/2001

Title

Agent

Approved by (Signature)

/s/ LESLIE A. THEISS

Name (Printed/Typed)

/s/ LESLIE A. THEISS

Date

JUN 14 2001

Title

FIELD MANAGER

Office

CARLSBAD FIELD OFFICE

Application approval does not warrant or certify the applicant holds legal or equitable title to those rights in the subject lease which would entitle the applicant to conduct operations thereon.

APPROVAL FOR 1 YEAR

Conditions of approval, if any, are attached

Title 18 U.S.C. Section 1001 and Title 43 U.S.C. Section 1212, make it a crime for any person knowingly and willfully to make to any department or agency of the United States any false, fictitious or fraudulent statements or representations as to any matter within its jurisdiction.

\*(Instructions on reverse)

**APPROVAL SUBJECT TO  
GENERAL REQUIREMENTS AND  
SPECIAL STIPULATIONS  
ATTACHED**



RECEIVED  
2001 APR 19 AM 10:22  
BUREAU OF LAND MGMT  
ROSWELL OFFICE

**DISTRICT I**  
P. O. Box 1980  
Hobbs, NM 88241-1980

State of New Mexico  
Energy, Minerals, and Natural Resources Department

Form C-102  
Revised 02-10-94

Instructions on back

**DISTRICT II**  
P. O. Drawer DD  
Artesia, NM 88211-0719

**OIL CONSERVATION DIVISION**

P. O. Box 2088  
Santa Fe, New Mexico 87504-2088

Submit to the Appropriate  
District Office  
State Lease - 4 copies  
Fee Lease - 3 copies

**DISTRICT III**  
1000 Rio Brazos Rd.  
Aztec, NM 87410

☐ AMENDED REPORT

**DISTRICT IV**  
P. O. Box 2088  
Santa Fe, NM 87507-2088

**WELL LOCATION AND ACREAGE DEDICATION PLAT**

1 API Number		2 Pool Code		3 Pool Name Ross Draw Wolfcamp			
4 Property Code		5 Property Name EL PASO '13' FEDERAL				6 Well Number 2	
7 OGRID No. 7377		8 Operator Name EDG RESOURCES, INC.				9 Elevation 3188'	

**10 SURFACE LOCATION**

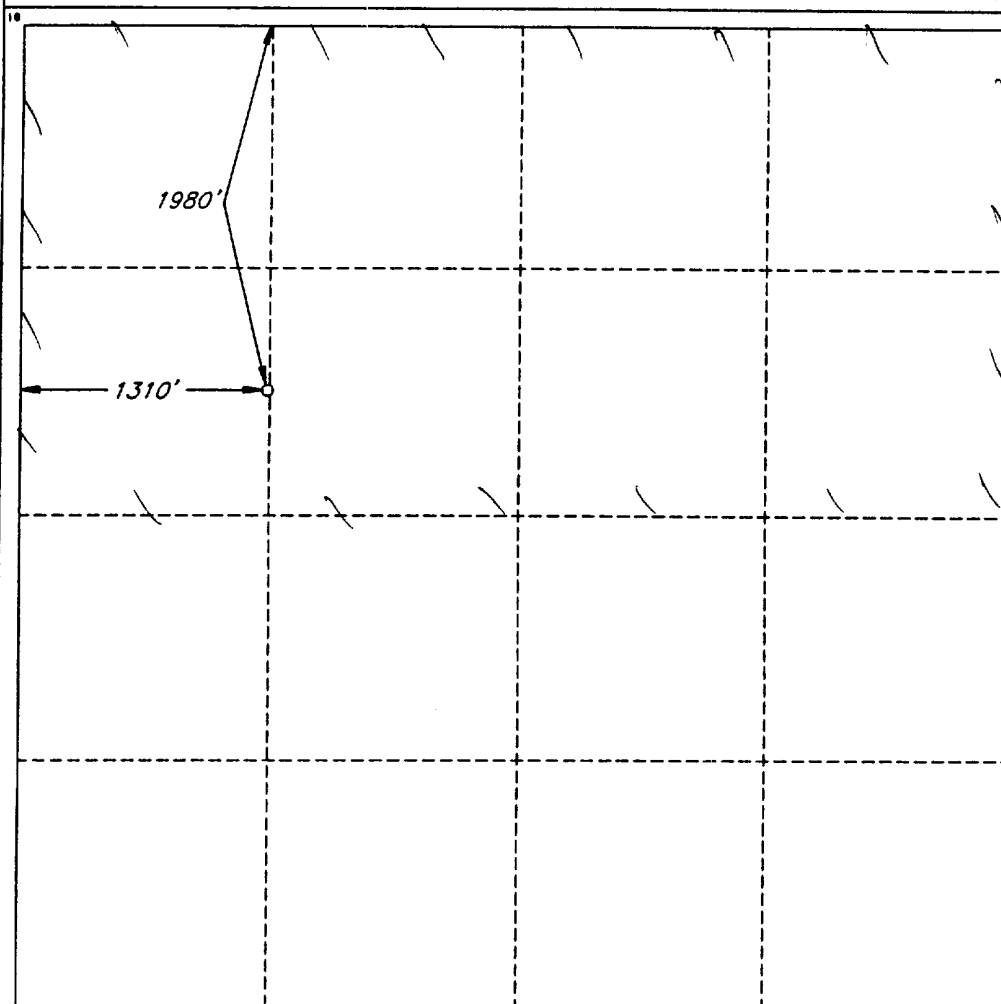
UL or lot no. E	Section 13	Township 28 SOUTH	Range 30 EAST, N.M.P.M.	Lot Ida	Feet from the 1980'	North/South line NORTH	Feet from the 1310'	East/West line WEST	County EDDY
--------------------	---------------	----------------------	----------------------------	---------	------------------------	---------------------------	------------------------	------------------------	----------------

**"BOTTOM HOLE LOCATION IF DIFFERENT FROM SURFACE**

UL or lot no.	Section	Township	Range	Lot Ida	Feet from the	North/South line	Feet from the	East/West line	County
---------------	---------	----------	-------	---------	---------------	------------------	---------------	----------------	--------

12 Dedicated Acres 320	13 Joint or Infill	14 Consolidation Code	15 Order No.
---------------------------	--------------------	-----------------------	--------------

NO ALLOWABLE WELL BE ASSIGNED TO THIS COMPLETION UNTIL ALL INTERESTS HAVE BEEN  
CONSOLIDATED OR A NON-STANDARD UNIT HAS BEEN APPROVED BY THE DIVISION



**OPERATOR CERTIFICATION**

I hereby certify that the information  
contained herein is true and complete  
to the best of my knowledge and belief.

Signature <i>Mike Francis</i>
Printed Name Mike Francis
Title Agent
Date 4/18/01

**SURVEYOR CERTIFICATION**

I hereby certify that the well  
location shown on this plat was  
plotted from field notes of actual  
surveys made by me or under  
my supervision, and that the  
same is true and correct to the  
best of my belief.

Date of Survey APRIL 4, 2001
Signature and Seal of Professional Surveyor <i>[Signature]</i>
Certificate No. V. L. BEZNER R.P.S. #7920
JOB # 75641 / 23 SE / V.H.B.

## DRILLING PROGRAM

EOG RESOURCES, INC.  
EL PASO "13" FEDERAL NO. 2  
1,980' FNL & 1,310' FWL  
SEC. 13, T26S, R30E  
EDDY COUNTY, NM

### 1. GEOLOGIC NAME OF SURFACE FORMATION:

Permian

### 2. ESTIMATED TOPS OF IMPORTANT GEOLOGICAL MARKERS:

Delaware	3330'
Cherry Canyon	4350'
Bone Spring	7200'
2 <sup>nd</sup> Bone Spring Sd	8800'
3 <sup>rd</sup> Bone Spring Sd	10000'
Wolfcamp	10420'
Wolfcamp Pay	11740'
Penn Marker	12800'

### 3. ESTIMATED DEPTHS OF ANTICIPATED FRESH WATER, OIL OR GAS:

Upper Permian Sands	100'	Fresh Water
Upper Penn		Gas

### 4. CASING PROGRAM

<u>Hole Size</u>	<u>Interval</u>	<u>OD Casing</u>	<u>Weight Grade Jt. Cond. Type</u>
14 3/4"	0-400'	11 3/4"	42# H-40 ST&C
11"	0-4000'	8 5/8"	32# J-55 LT&C
7 7/8"	0-11700'	5 1/2"	17# S95/P110 L&TC
4 3/4"	11400-13000'	3-1/2"	12.95# L80

#### Cementing Program:

11 3/4" Surface Casing: Cement to surface with 220 sx Prem Plus, 3% Econolite, 2% Calcium Chloride, 0.25#/sx Flocele, 150 sx Prem Plus, 2% Calcium Chloride

8 5/8" Intermediate: Cement to surface with 715 sx Interfill C, .25#/sx flocele, 250 sx Premium Plus, 2% Calcium Chloride

5 1/2" Production Casing: Cement w/775 sx Premium, 3% Econolite, 5#/sx Salt, .25#/sx Flocele, 250 sx Prem 50/50 Poz mix 'A', 2% Halliburton-Gel First 2%, 0.5% Halad-322, 0.2% HR-5. This is designed to bring TOC to 3500'.

3 1/2" Casing: 100 sx Prem, 0.3% Halad-344, 0.3% Halad-413, 0.3% Super CBL, .15% SCR-100  
This designed to bring TOC to 11400 +/-.

## **DRILLING PROGRAM**

**EOG RESOURCES, INC.  
EL PASO "13" FEDERAL NO. 2  
1,980' FNL & 1,310' FWL  
SEC. 13, T26S, R30E  
EDDY COUNTY, NM**

### **5. MINIMUM SPECIFICATIONS FOR PRESSURE CONTROL:**

(SEE EXHIBIT #1 and #2)

The blowout preventer equipment (BOP) shown in Exhibit #1 will consist of a double ram-type (5000 psi WP) preventer and an annular preventer (5000-psi WP). Units will be hydraulically operated and the ram-type will be equipped with blind rams on top and drill pipe rams on bottom. All BOP's and accessory equipment will be tested to 600 psi before drilling out of surface casing. Before drilling out of intermediate casing, the ram-type BOP and accessory equipment will be tested to 5000/1000 psi and the annular to 3500/5000-psi pressure. The blowout preventer equipment (BOP) shown in Exhibit 2 will consist of a double ram-type (10,000 psi) preventer and an annular preventer (10,000 psi) from 11,700' to TD. Before drilling below 2<sup>nd</sup> Intermediate ram type BOP and accessory equipment will be tested to 10,000/1,000 psi and the annulus to 5000/1000. This equipment will be used from  $\pm 11,950'$  to TD.

EOG Resources, Inc. requests a variance for test surface casing and BOP. Eog will test surface casing and BOP to 600 psi before drilling out surface casing.

Pipe rams will be operationally checked each 24-hour period. Blind rams will be operationally checked on each trip out of the hole. These checks will be noted on the daily tour sheets.

### **6. TYPES AND CHARACTERISTICS OF THE PROPOSED MUD SYSTEM:**

The well will be drilled to TD with a combination of brine, cut brine, and polymer/KCL mud system. The applicable depths and properties of this system are as follows:

<u>Depth</u>	<u>Type</u>	<u>Wt (PPG)</u>	<u>Viscosity (sec)</u>	<u>Waterloss (cc)</u>
0-400'	Fresh Water (spud)	8.5	40-45	N.C.
400'-4000'	Brine Water	10.0	30	N.C.
4000'-11700'	Fresh Water	8.4	28	N.C.
11700'-13000'	Brine & Polymer xcd	10-14.0	28/45	0/<1 CC

Sufficient mud materials to maintain mud properties and meet minimum lost circulation and weight increase requirements will be kept at the wellsite at all times

### **7. AUXILIARY WELL CONTROL AND MONITORING EQUIPMENT:**

(A) A kelly cock will be kept in the drill string at all times.

(B) A full opening drill pipe-stabbing valve (inside BOP) with proper drill pipe connections will be on the rig floor at all times.

## **DRILLING PROGRAM**

**EOG RESOURCES, INC.  
EL PASO "13" FEDERAL NO. 2  
1,980' FNL & 1,310' FWL  
SEC. 13, T26S, R30E  
EDDY COUNTY, NM**

(C) A mud logging unit complete with H<sub>2</sub>S detector will be continuously monitoring drilling penetration rate and hydrocarbon shows from 2000' to TD.

### **8. LOGGING, TESTING AND CORING PROGRAM:**

(A) The electric logging program will consist of GR-Dual Induction Focused and GR-Compensated Density-Neutron from TD to intermediate casing with a GR-Compensated Neutron run from intermediate casing to surface and optional Sonic from TD to Intermediate casing.

(B) Possible sidewall cores based on shows.

### **9. ABNORMAL CONDITIONS, PRESSURES, TEMPERATURES AND POTENTIAL HAZARDS:**

The estimated bottom hole temperature (BHT) at TD is 175 degrees F with an estimated maximum bottom-hole pressure (BHP) at TD of 8000 psig. No hydrogen sulfide or other hazardous gases or fluids have been encountered, reported or are known to exist at this depth in this area. No major loss circulation zones have been reported in offsetting wells.

### **10. ANTICIPATED STARTING DATE AND DURATION OF OPERATIONS:**

The drilling operation should be finished in approximately one month. If the well is productive, an additional 30-60 days will be required for completion and testing before a decision is made to install permanent facilities.

## **DRILLING PROGRAM**

**EOG RESOURCES, INC.  
EL PASO "13" FEDERAL NO. 2  
1,980' FNL & 1,310' FWL  
SEC. 13, T26S, R30E  
EDDY COUNTY, NM**

## **SURFACE USE AND OPERATIONS PLAN**

### **1. EXISTING ROADS:**

Access to location will be made as shown on Exhibit #3

Routine grading and maintenance of existing roads will be conducted as necessary to maintain their condition as long as any operations continue on this lease.

### **2. PROPOSED ACCESS ROAD:**

202' of new road is required. Exhibit 3A

No turnouts necessary.

No culverts, cattleguards, gates, low-water crossings are necessary.

Surfacing material consists of native caliche to be obtained from the nearest BLM-approved caliche pit. Any additional materials required will be purchased from the dirt contractor.

### **3. LOCATION OF EXISTING WELLS:**

Exhibit #4 shows all existing wells within a one-mile radius of this well.

### **4. LOCATION OF EXISTING AND/OR PROPOSED FACILITIES:**

There are no existing production facilities. If production is encountered, a temporary facility will be established on the drill pad, and if warranted, a production facility would be built at a later date in the immediate area of the drill pad location. If the well is productive, the flowline would also be located on the drill-pad site and no additional disturbance will occur.

### **5. LOCATION AND TYPE OF WATER SUPPLY:**

Water for drilling will be purchased from commercial sources and transported to the well site over the roads as shown on Exhibit #3.

## **DRILLING PROGRAM**

**EOG RESOURCES, INC.  
EL PASO "13" FEDERAL NO. 2  
1,980' FNL & 1,310' FWL  
SEC. 13, T26S, R30E  
EDDY COUNTY, NM**

### **6. PLANS FOR RESTORATION OF THE SURFACE:**

After completion of drilling and/or completion operations, all equipment and other material not needed for operations will be removed. Location will be cleaned of all trash and junk to leave the well in an aesthetically pleasing condition as possible.

Any unguarded pits containing fluid will be fenced until they are dry and back filled.

After abandonment of the well, surface restoration will be in accordance with current federal laws and regulations. Location will be cleaned, and The wellpad removed to promote vegetation and disposal of human waste will be complied with. Trash, waste paper, garbage and junk will be hauled to an approved disposal site in an enclosed trash trailer.

All trash and debris will be removed from the well site within 30 days after finishing drilling and/or completion operations.

### **ANCILLARY FACILITIES:**

No airstrip, campsite, or other facilities will be built.

### **WELL SITE LAYOUT:**

Exhibit #5 shows the relative location and dimensions of the well pad.



**DRILLING PROGRAM**

**EOG RESOURCES, INC.  
EL PASO "13" FEDERAL NO. 2  
1,980' FNL & 1,310' FWL  
SEC. 13, T26S, R30E  
EDDY COUNTY, NM**

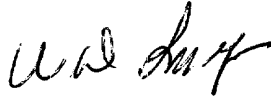
**OTHER INFORMATION:**

The area around the well site is grassland and the topsoil is duned and sandy. The vegetation is native scrub grasses with abundant oakbrush, sagebrush, yucca, and prickly pear.

**CERTIFICATION:**

I HEREBY CERTIFY that I, or persons under my direct supervision, have inspected the proposed drill site and access route; that I am familiar with the conditions which presently exist; that the statements made in this plan are, to the best of my knowledge, true and correct; and that the work associated with the operations proposed herein will be performed by EOG Resources, Inc. and its contractors and sub-contractors in conformity with this plan and the terms and conditions under which it is approved.

W. D. Smeltzer  
Drilling Manager



Date: 4-17-01

## **DRILLING PROGRAM**

**EOG RESOURCES, INC.  
EL PASO "13" FEDERAL NO. 2  
1,980' FNL & 1,310' FWL  
SEC. 13, T26S, R30E  
EDDY COUNTY, NM**

### **ATTACHMENT TO EXHIBIT #1 & #2**

1. Wear ring to be properly installed in head.
2. Blow out preventer and all fittings must be in good condition, 5000 psi W.P. minimum. Exhibit #1 and 10,000 psi W.P. minimum, Exhibit #2.
3. All fittings to be flanged
4. Safety valve must be available on rig floor at all times with proper connections, valve to be full bore 5000 psi W.P. minimum.
5. All choke and fill lines to be securely anchored especially ends of choke lines.
6. Equipment through which bit must pass shall be at least as large as the diameter of the casing being drilled through.
7. Kelly cock on kelly.
8. Extension wrenches and hand wheels to be properly installed.
9. Blow out preventer control to be located as close to driller's position as feasible.
10. Blow out preventer closing equipment to include minimum 40-gallon accumulator, two independent sources of pump power on each closing unit installation, and meet all API specifications.

EOG Resources, Inc.

El Paso 13 Federal No. 2

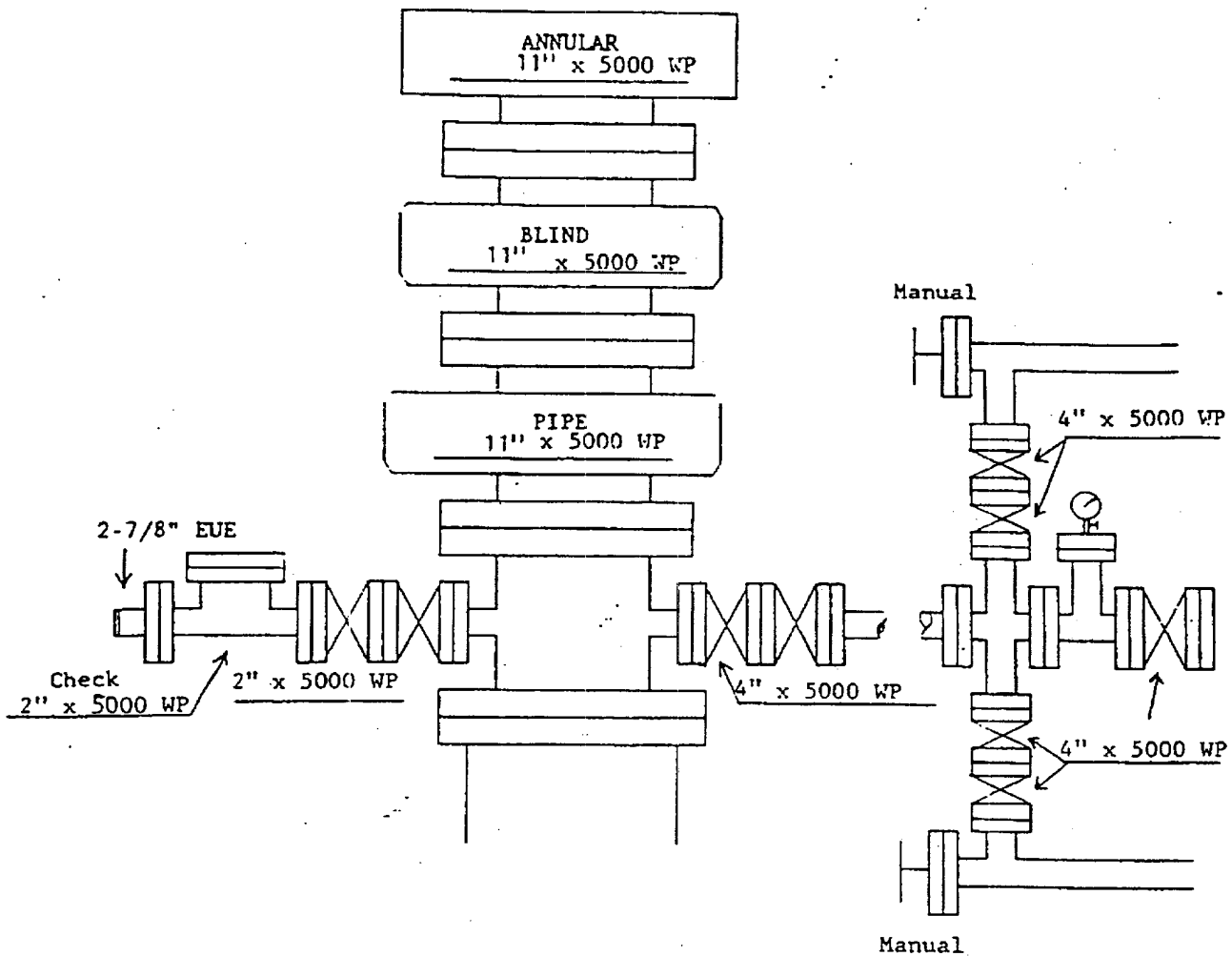


Exhibit 1

EOG Resources, Inc.

El Paso "13" Federal No. 2

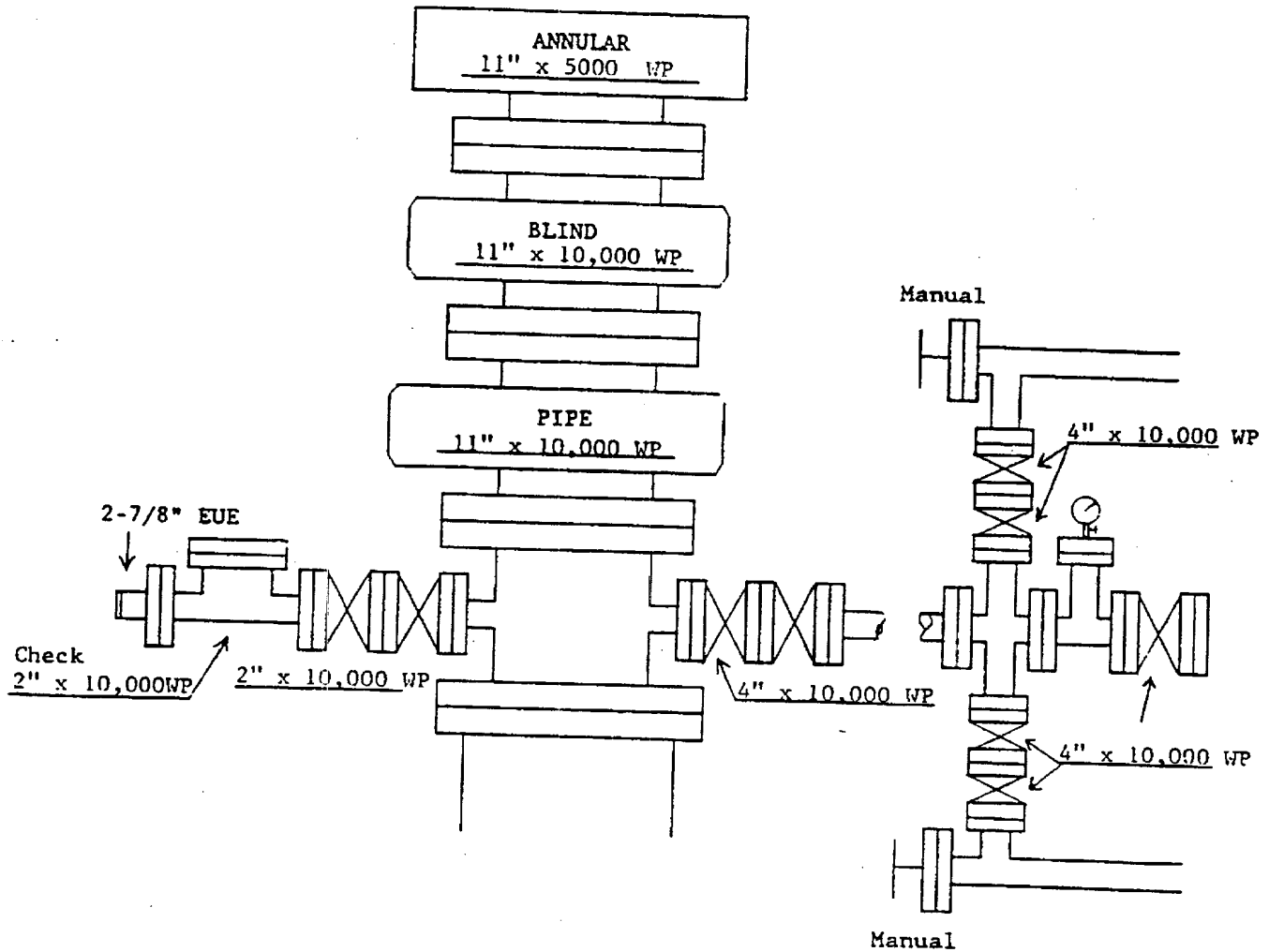
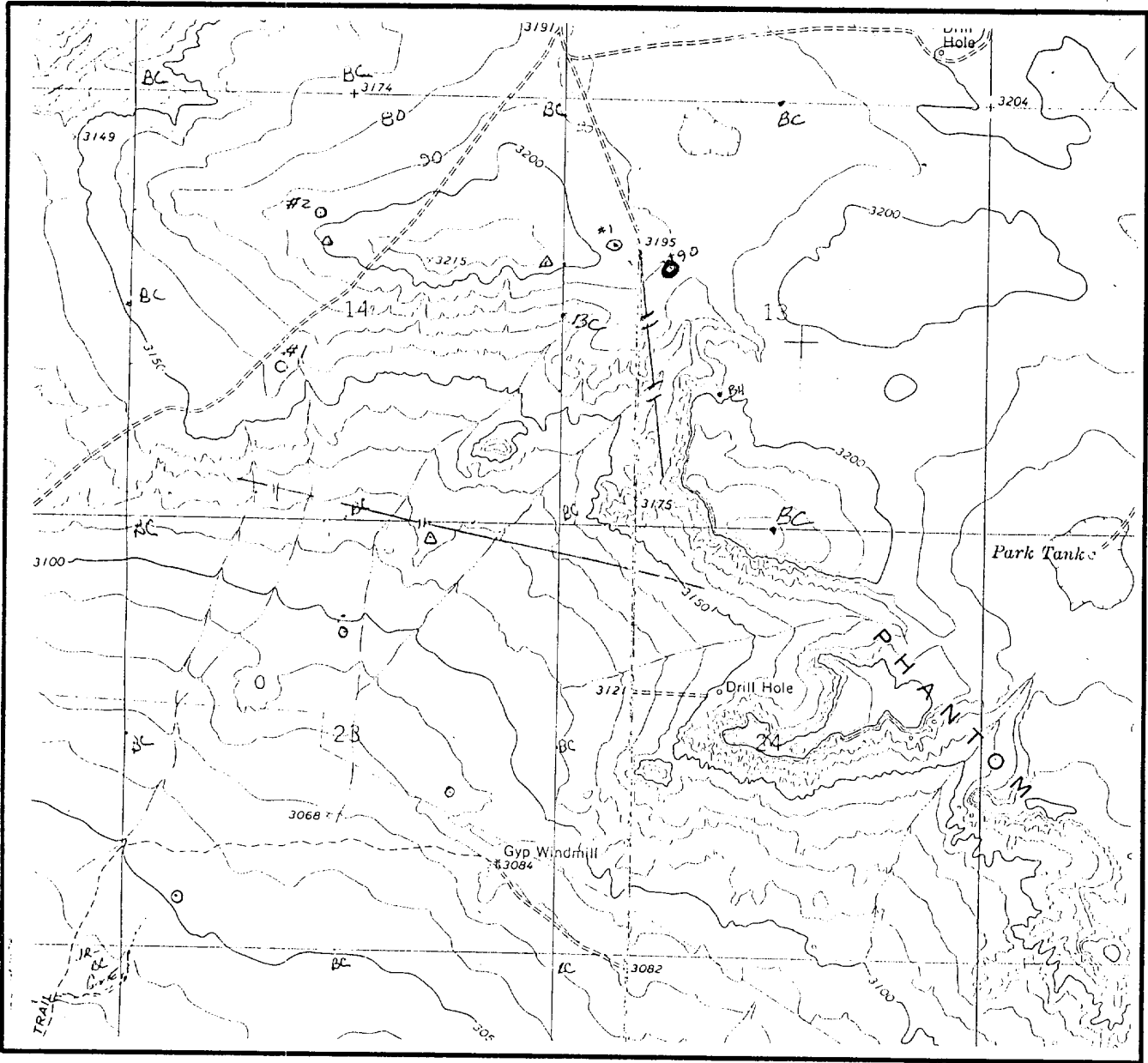


Exhibit 2

LOCATION & ELEVATION VERIFICATION MAP



SCALE : 1" = 2000' CONTOUR INTERVAL 10'

SECTION 13 TWP 26-S RGE 30-E  
SURVEY NEW MEXICO PRINCIPAL MERIDIAN  
COUNTY EDDY STATE NM  
DESCRIPTION 1980' FNL & 1310' FWL  
ELEVATION 3188'

OPERATOR EOG RESOURCES, INC.  
LEASE EL PASO "13" FEDERAL #2

U.S.G.S. TOPOGRAPHIC MAP  
PHANTOM BANKS, NEW MEXICO

LAT. N 32°02'40"  
LONG. W 103°50'19"

Exhibit 3



This location has been very carefully staked on the ground according to the best official survey records, maps, and other data available to us.  
Review this plot and notify us immediately of any possible discrepancy.

TOPOGRAPHIC LAND SURVEYORS

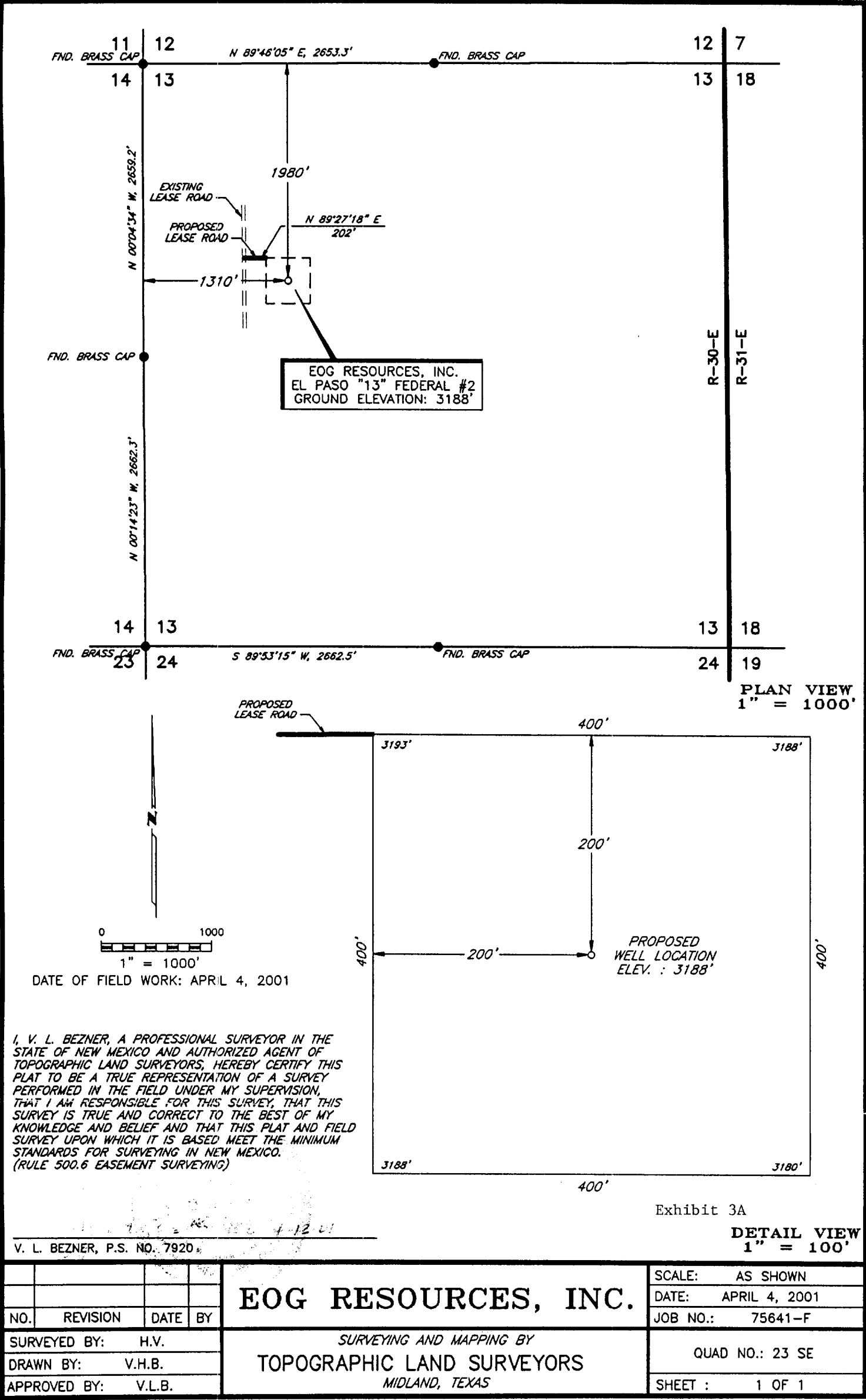
Surveying & Mapping for the Oil & Gas Industry

1307 N. HOBART  
PAMPA, TX. 79065  
(800) 658-6382

6709 N. CLASSEN BLVD.  
OKLAHOMA CITY, OK. 73116  
(800) 654-3219

2903 N. BIG SPRING  
MIDLAND, TX. 79705  
(800) 767-1653

PLAT SHOWING PROPOSED  
WELL LOCATION AND LEASE ROAD N  
SECTION 13, T-26-S, R-30-E, N.M.P.M.  
EDDY COUNTY, NEW MEXICO



				EOG RESOURCES, INC.	SCALE:	AS SHOWN
					DATE:	APRIL 4, 2001
NO.	REVISION	DATE	BY		JOB NO.:	75641-F
SURVEYED BY: H.V.				SURVEYING AND MAPPING BY TOPOGRAPHIC LAND SURVEYORS MIDLAND, TEXAS	QUAD NO.: 23 SE	
DRAWN BY: V.H.B.					SHEET : 1 OF 1	
APPROVED BY: V.L.B.						

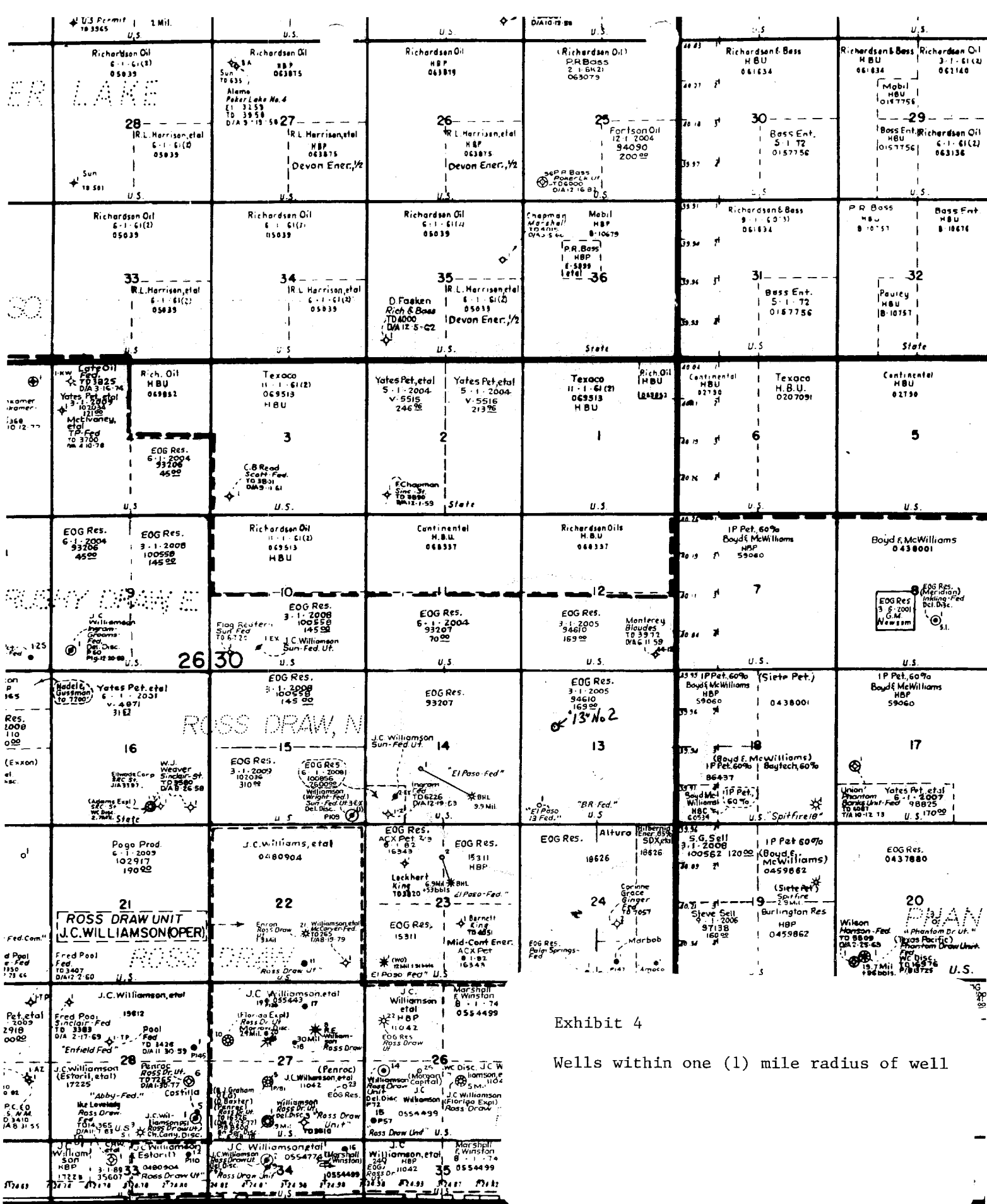
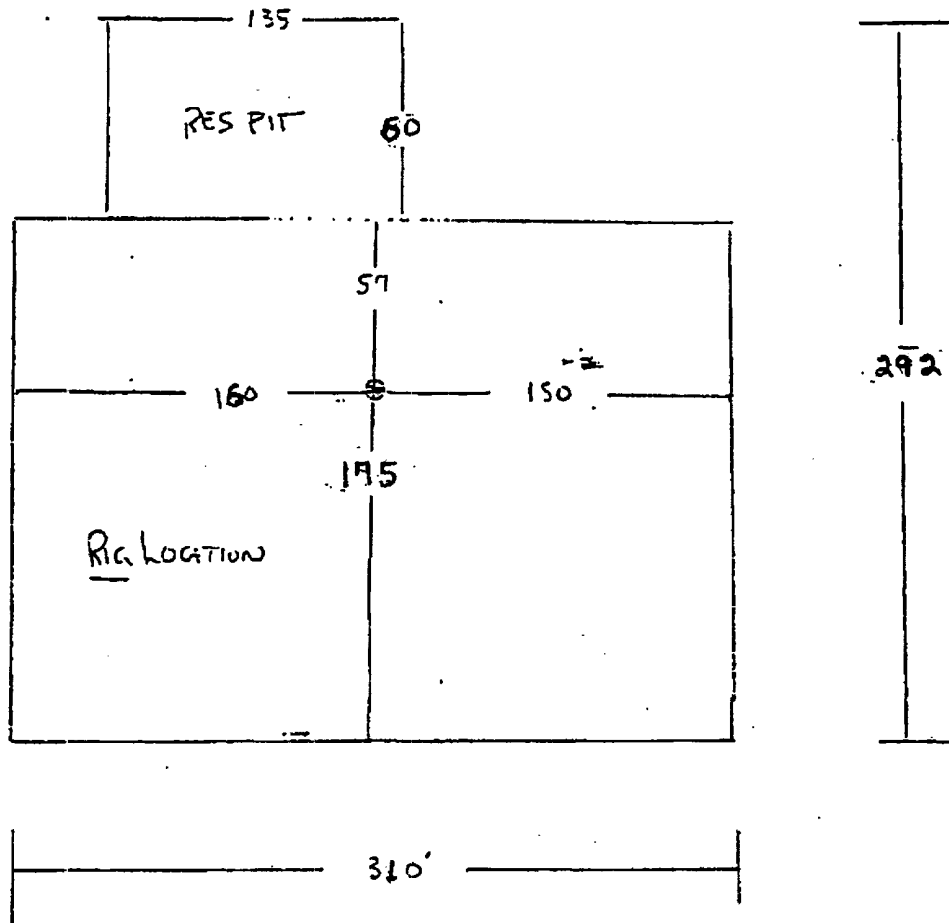


Exhibit 4

Wells within one (1) mile radius of well

Exhibit V

El Paso "13" Federal No. 2.





**Statement Accepting Responsibility For Operations**

**Operator Name:** EOG Resources, Inc.  
**Street or Box:** P.O. Box 2267  
**City, State:** Midland, TX  
**Zip Code:** 79702

The undersigned accepts all applicable terms, conditions, stipulations, and restrictions concerning operations conducted on the leased land or portion thereof, as described below:

**Lease No.:** NM94610

**Legal Description of Land:** Section 13, T26S, R30E, NMPM  
Lea Co., NM

**Formation(s) (if applicable):**

**Bond Coverage:** *(State if individually bonded or another's bond)* Individually

**BLM Bond File No.:** NM2308 with endorsement to State of NM

**Authorized Signature:**

  
Mike Francis

**Title:** Agent

**Date:** 4/18/01