

UNITED STATES
DEPARTMENT OF THE INTERIOR
BUREAU OF LAND MANAGEMENT

(Other Instructions on
side) **C/SK** FORM APPROVED
OMB NO. 1004-0136
Expires: February 28, 1995

APPLICATION FOR PERMIT TO DRILL OR DEEPEN

1a. TYPE OF WORK
DRILL ☒ DEEPEN ☐
b. TYPE OF WELL
OIL WELL ☒ GAS WELL ☐
c. NAME OF OPERATOR
CONCHO RESOURCES, INC. (ERICK NELSON) 915-683-7443
d. ADDRESS AND TELEPHONE NO.
110 WEST LOUISIANA SUITE 410 MIDLAND, TEXAS 79702 (915-683-7443)
e. LOCATION OF WELL (Report location clearly and in accordance with any State requirements.)
At surface
660' FSL & 660' FWL SEC. 35 T25S-R29E EDDY CO. NM
At proposed prod. zone SAME

5. LEASE DESIGNATION AND SERIAL NO.
NM-98822
6. IF INDIAN, ALLOTTEE OR TRIBE NAME

7. UNIT AGREEMENT NAME
28/65
8. FARMOR LEASE NAME, WELL NO.
TESUQUE "35" FEDERAL # 1
9. API WELL NO.
30-015-31838
10. FIELD AND POOL, OR WILDCAT
BRUSHY DRAW DEL. NORTH
11. SEC., T., R., M., OR BLK.
AND SURVEY OR AREA
SEC. 35 T25S-R29E
12. COUNTY OR PARISH
EDDY CO.
13. STATE
NM

14. DISTANCE IN MILES AND DIRECTION FROM NEAREST TOWN OR POST OFFICE
Approximately 17 miles Southeast of Loving New Mexico

15. DISTANCE FROM PROPOSED LOCATION TO NEAREST PROPERTY OR LEASE LINE, FT.
(Also to nearest drilg. unit line, if any) 660'
16. NO. OF ACRES IN LEASE
160
17. NO. OF ACRES ASSIGNED TO THIS WELL
40
18. DISTANCE FROM PROPOSED LOCATION TO NEAREST WELL, DRILLING, COMPLETED, OR APPLIED FOR, ON THIS LEASE, FT.
1320'
19. PROPOSED DEPTH
7000'
20. ROTARY OR CABLE TOOLS
ROTARY

21. ELEVATIONS (Show whether DF, RT, GR, etc.)
2990' GR.
22. APPROX. DATE WORK WILL START
When Approved

PROPOSED CASING AND CEMENTING PROGRAM

SIZE OF HOLE	GRADE SIZE OF CASING	WEIGHT PER FOOT	SETTING DEPTH	QUANTITY OF CEMENT
25"	Conductor	NA	40'	Cement to surface with Redi-mix
17 1/2"	H-40 13 3/8"	48	854' 600'	600 Sx. circulate to surface
11"	K-55 8 5/8"	32	3200'	1000 Sx. " " "
7 7/8"	N-80 5 1/2"	17	7000'	600 Sx. Est. TOC 2800'

1. Drill 25" hole to 40'. Set 40' of 20" conductor pipe and cement to surface with Redi-mix.
2. Drill 17 1/2" hole to 600'. Run and set 600' of 13 3/8" H-40 48# ST&C casing. Cement with 600 Sx. of Class "C" cement + 2% CaCl, + 1/4# floccle/Sx. circulate cement to surface
3. Drill 11" hole to 3200'. Run and set 3200' of 8 5/8" K-55 32# ST&C casing. Cement with 800 Sx. of Class "C" Light + 2% CaCl, tail in with 200 Sx. of Class "C" cement + 2% CaCl, circulate cement to surface.
4. Drill 7 7/8" hole to 7000'. Run and set 7000' of 5 1/2" N-80 17# LT&C casing. Cement with 400 Sx. of Class "H" Light + additives, tail in with 200 Sx. of Class "H" Premium Plus + additives, estimate top of cement 2800' from surface.

IN ABOVE SPACE DESCRIBE PROPOSED PROGRAM: If proposal is to deepen, give data on present productive zone and proposed new productive zone. If proposal is to drill or deepen directionally, give pertinent data on subsurface locations and measured and true vertical depths. Give blowout preventer program, if any.

SIGNED Joe T. Jencia APPROVAL SUBJECT TO GENERAL REQUIREMENTS AND SPECIAL STIPULATIONS ATTACHED
(This space for Federal or State office use)
PERMIT NO. _____ APPROVAL DATE _____

Application approval does not warrant or certify that the applicant holds legal or equitable title to those rights in the subject lease which would entitle the applicant to conduct operations thereon.
CONDITIONS OF APPROVAL, IF ANY:

APPROVED BY /S/ JOE G. LARA Acting FIELD MANAGER DATE JUN 14 2001

*See Instructions On Reverse Side APPROVAL FOR 1 YEAR

Title 18 U.S.C. Section 1001, makes it a crime for any person knowingly and willfully to make to any department or agency of the United States any false, fictitious or fraudulent statements or representations as to any matter within its jurisdiction.

DISTRICT I

P.O. Box 1980, Hobbs, NM 88241-1980

State of New Mexico

Energy, Minerals and Natural Resources Dept.

Form C-102

Revised February 10, 1994

Submit to Appropriate District Office

State Lease - 4 Copies

Fee Lease - 3 Copies

DISTRICT II

P.O. Drawer DD, Artesia, NM 88211-0719

OIL CONSERVATION DIVISION

P.O. Box 2088

Santa Fe, New Mexico 87504-2088

DISTRICT III

1000 Rio Brazos Rd., Aztec, NM 87410

DISTRICT IV

P.O. BOX 2088, SANTA FE, N.M. 87504-2088

WELL LOCATION AND ACREAGE DEDICATION PLAT

☐ AMENDED REPORT

API Number		Pool Code 8085	Pool Name BRUSHY DRAW DELAWARE-NORTH	
Property Code	Property Name TESUQUE "35" FEDERAL			Well Number 1
OGRID No. 166111	Operator Name CONCHO RESOURCES, INC.			Elevation 2990'

Surface Location

UL or lot No.	Section	Township	Range	Lot Idn	Feet from the	North/South line	Feet from the	East/West line	County
M	35	25-S	29-E		660	SOUTH	660	WEST	EDDY

Bottom Hole Location If Different From Surface

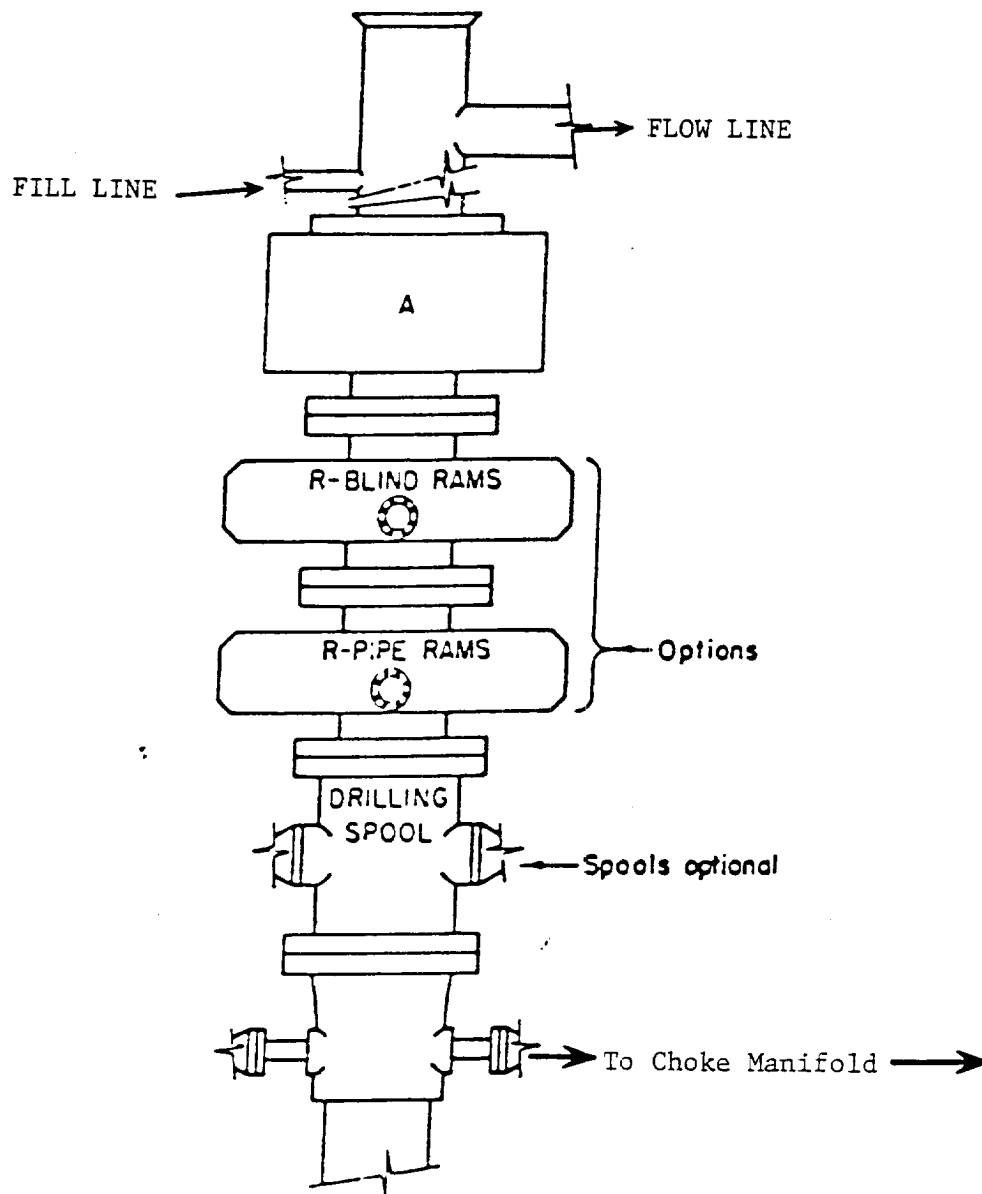
UL or lot No.	Section	Township	Range	Lot Idn	Feet from the	North/South line	Feet from the	East/West line	County

Dedicated Acres	Joint or Infill	Consolidation Code	Order No.
40			

NO ALLOWABLE WILL BE ASSIGNED TO THIS COMPLETION UNTIL ALL INTERESTS HAVE BEEN CONSOLIDATED
OR A NON-STANDARD UNIT HAS BEEN APPROVED BY THE DIVISION

				OPERATOR CERTIFICATION I hereby certify the the information contained herein is true and complete to the best of my knowledge and belief. Signature Joe T. Janica Printed Name Agent Title 02/26/01 Date
				SURVEYOR CERTIFICATION I hereby certify that the well location shown on this plat was plotted from field notes of actual surveys made by me or under my supervision, and that the same is true and correct to the best of my belief. FEBRUARY 06, 2001 Date Surveyed Signature & Seal of Professional Surveyor 01-11-0175 Certificate No. RONALD J. EDSON 3239 GARY EDSON 12841

EXHIBIT "A"



ARRANGEMENT SRRA

900 Series
3000 PSI WP

EXHIBIT "E"
SKETCH OF B.O.P. TO BE USED ON

CONCHO RESOURCES, INC.
TESUQUE "35" FEDERAL # 1
UNIT "M" SECTION 35
T25S-R29E EDDY CO. NM

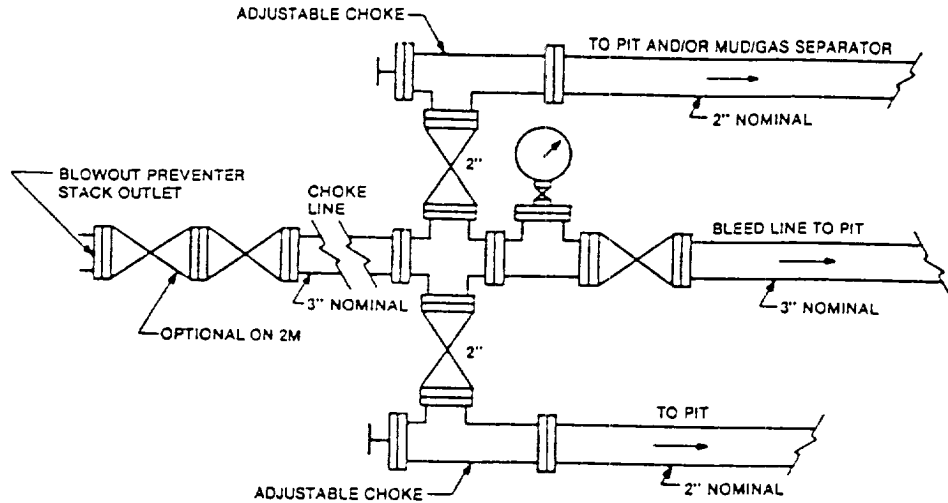


FIGURE K-1. Typical choke manifold assembly for 2M and 3M rated working pressure service — surface installation.

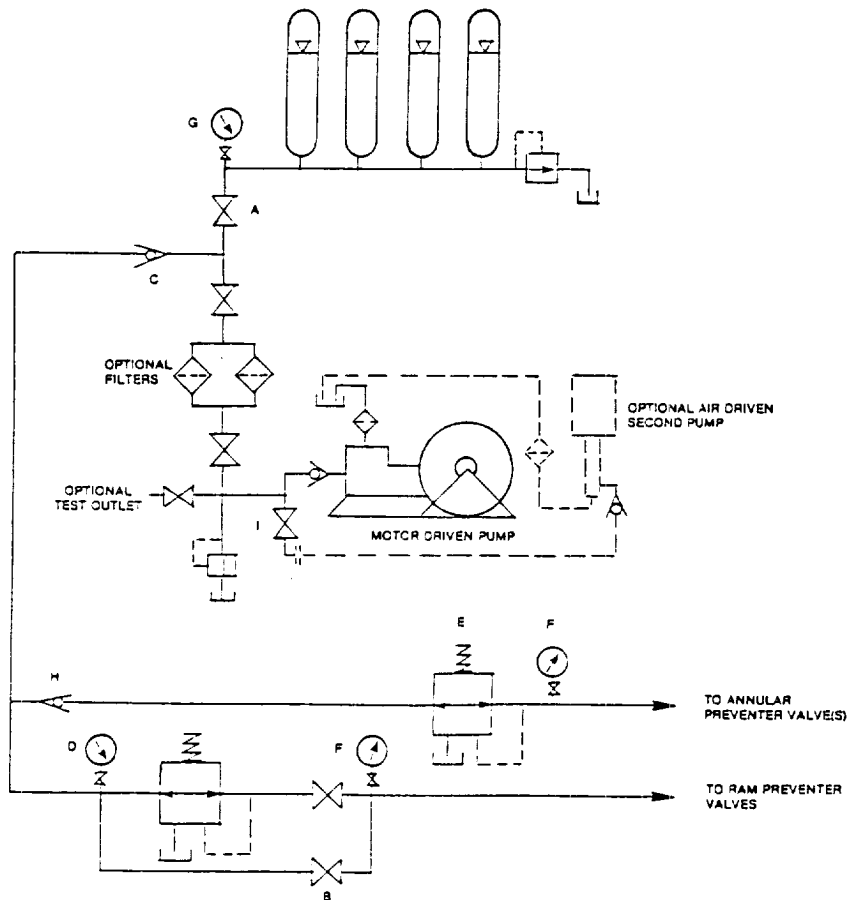


FIGURE K6-1. The schematic sketch of an accumulator system shows required and optional components.

EXHIBIT "E-1"
CHOKE MANIFOLD & CLOSING UNIT

CONCHO RESOURCES, INC.
TESUQUE "35" FEDERAL # 1
UNIT "M" SECTION 35
T25S-R29E EDDY CO. NM