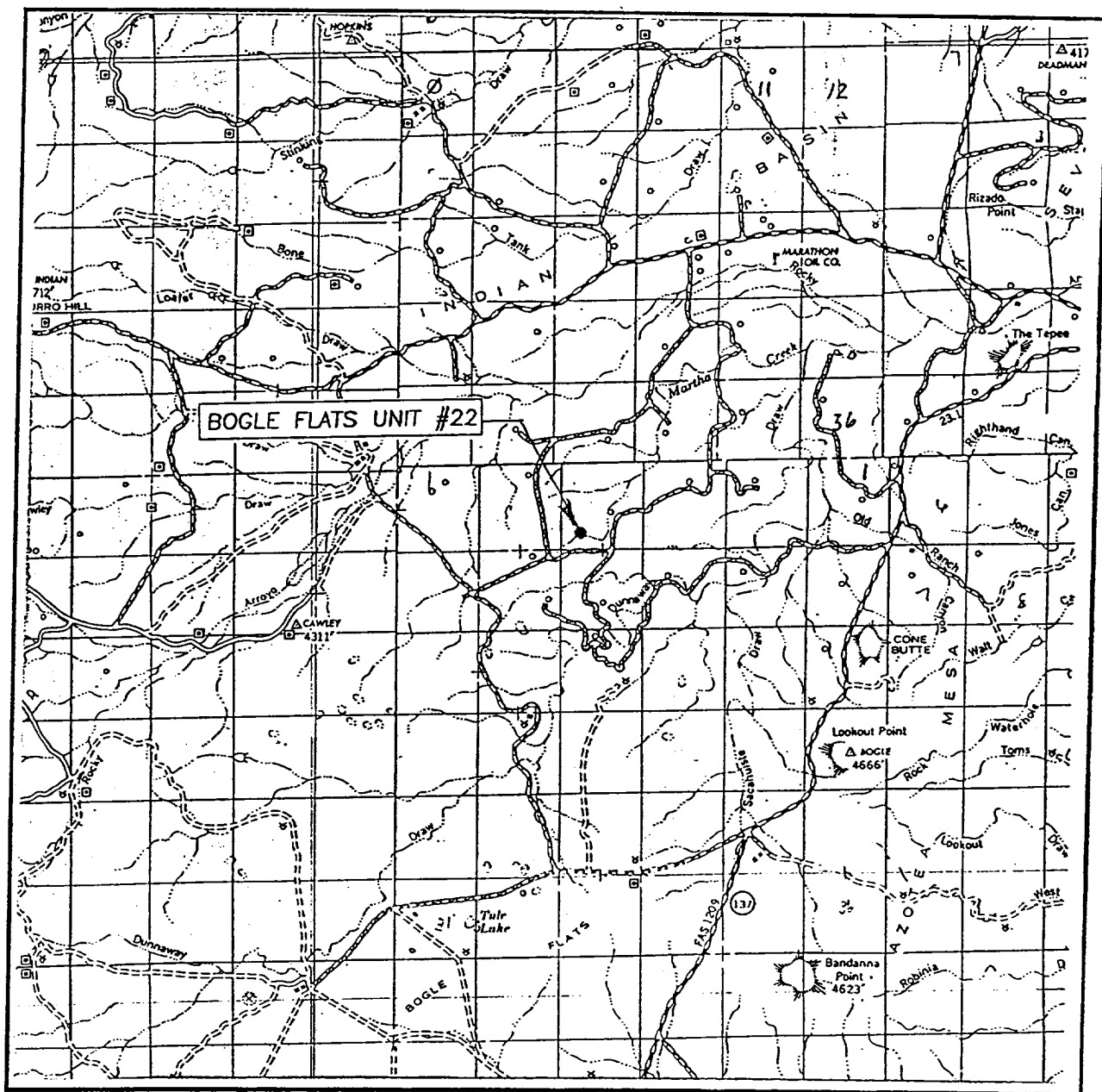


VICINITY M.A.P



SCALE: 1" = 2 MILES

SEC. 4 TWP. 22-S RGE. 23-E

SURVEY N.M.P.M.

COUNTY LEA

DESCRIPTION 1650'FSL & 1725'FWL

ELEVATION 4113'

OPERATOR CHEVRON U.S.A. PRODUCTION COMPANY

LEASE BOGLE FLATS UNIT

JOHN WEST SURVEYING
HOBBS, NEW MEXICO

(505) 393-3117

H2S DRILLING OPERATIONS PLAN

I. HYDROGEN SULFIDE TRAINING

All contractors and subcontractors employed by Chevron U.S.A. Inc. will receive or have received training from a qualified instructor within the last twelve months in the following areas prior to commencing drilling operations on this well.

1. The hazards and characteristics of hydrogen sulfide (H₂S)
2. Safety precautions
3. Operations of safety equipment and life support systems

In addition, Chevron supervisory personnel will be trained or prepared in the following areas:

1. The effect of H₂S on metal components in the system. If high tensile tubulars are to be used, personnel will be trained in their special maintenance requirements.
2. Corrective action and shut-down procedures when drilling or working a well, blowout prevention and well control procedures, if the nature of work performed involves these items.
3. The contents and requirements of the contingency plan when such plan is required.

All personnel will be required to carry documentation of the above training on their person.

II. H2S EQUIPMENT AND SYSTEMS

1. Safety Equipment

The following safety equipment will be on location.

- A. Wind direction indicators as seen in attached diagram.
- B. Automatic H₂S detection alarm equipment (both audio and visual).
- C. Clearly visible warning signs as seen on the attached diagram. Signs will use the words "POISON GAS" and "CAUTION" with a strong color contrast.
- D. Protective breathing equipment will be located in the dog house and at the briefing areas as seen in the attached diagram.