

NEW MEXICO OIL CONSERVATION COMMISSION
WELL LOCATION AND ACREAGE DEDICATION PLAT

RECEIVED

Form C-102
Supersedes C-128
Effective 1-1-65

All distances must be from the outer boundaries of the Section.

JUN 11 1983

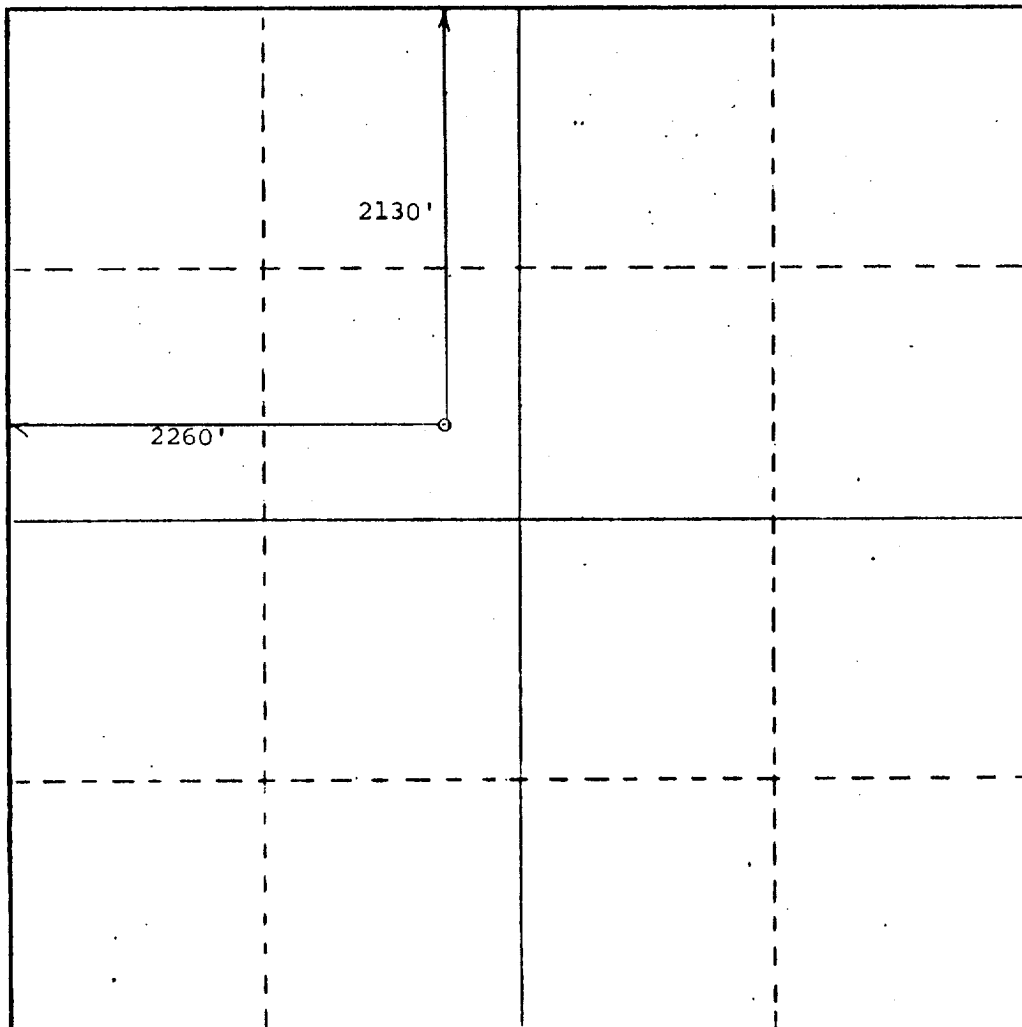
| | | | | | | |
|--|------------------------------------|-----------------------------|-------------------------|---|---|---|
| Operator Phillips Petroleum | | Lease Lg. 5491 | | O. C. D. | | Well No. Al-36 Iverson Estate |
| Unit Letter F | Section 36 | Township 29 South | Range 15 West | County ARTESIA, OFFICE Hidalgo | | |
| Actual Footage Location of Well: 2130 feet from the North line and 2260 feet from the West line | | | | | | |
| Ground Level Elev. 4484' | Producing Formation N.A. | | Pool N.A. | | Dedicated Acreage: N.A. Acres | |

1. Outline the acreage dedicated to the subject well by colored pencil or hatchure marks on the plat below. **N.A.**
2. If more than one lease is dedicated to the well, outline each and identify the ownership thereof (both as to working interest and royalty). **N.A.**
3. If more than one lease of different ownership is dedicated to the well, have the interests of all owners been consolidated by communitization, unitization, force-pooling, etc? **N.A.**

☐ Yes ☐ No If answer is "yes," type of consolidation **N.A.**

If answer is "no," list the owners and tract descriptions which have actually been consolidated. (Use reverse side of this form if necessary.) **N.A.**

No allowable will be assigned to the well until all interests have been consolidated (by communitization, unitization, forced-pooling, or otherwise) or until a non-standard unit, eliminating such interests, has been approved by the Commission.



CERTIFICATION

I hereby certify that the information contained herein is true and complete to the best of my knowledge and belief.

Name

A. E. Stuart

Position

Area Manager

Company

Phillips Petroleum Company

Date

July 7, 1983

I hereby certify that the well location shown on this plat was plotted from field notes of actual surveys made by me or under my supervision, and that the same is true and correct to the best of my knowledge and belief.

Date Surveyed

Required by the Commission and State Surveyor

Certified

