

District I
1625 N. French Dr., Hobbs, NM 88240
District II
811 S. First St., Artesia, NM 88210
District III
1000 Rio Brazos Road, Aztec, NM 87410
District IV
1220 S. St. Francis Dr., Santa Fe, NM 87505

State of New Mexico
Energy Minerals and Natural Resources
Department
Oil Conservation Division
1220 South St. Francis Dr.
Santa Fe, NM 87505

Form C-144
Revised June 6, 2013

For temporary pits, below-grade tanks, and multi-well fluid management pits, submit to the appropriate NMOCD District Office.
For permanent pits submit to the Santa Fe Environmental Bureau office and provide a copy to the appropriate NMOCD District Office.

16529

Pit, Below-Grade Tank, or
Proposed Alternative Method Permit or Closure Plan Application

Type of action: ☐ Below grade tank registration
☐ Permit of a pit or proposed alternative method
☐ Closure of a pit, below-grade tank, or proposed alternative method
☐ Modification to an existing permit/or registration
☒ Closure plan only submitted for an existing permitted or non-permitted pit, below-grade tank, or proposed alternative method

Instructions: Please submit one application (Form C-144) per individual pit, below-grade tank or alternative request

Please be advised that approval of this request does not relieve the operator of liability should operations result in pollution of surface water, ground water or the environment. Nor does approval relieve the operator of its responsibility to comply with any other applicable governmental authority's rules, regulations or ordinances.

1.
Operator: BP AMERICA PROD. CO. OGRID #: 778
Address: 1199 Main Ave., Suite 101, Durango, CO 81301
Facility or well name: Cedar Hill Gathering Pipeline
APPNumber: BBPK063110 OCD Permit Number: 16529
U/L or Qtr/Qtr K Section 6.0 Township 31.0N Range 10W County: San Juan County
Center of Proposed Design: Latitude 36.925374 Longitude -107.927966 NAD: ☐ 1927 ☒ 1983
Surface Owner: ☒ Federal ☐ State ☐ Private ☐ Tribal Trust or Indian Allotment

2.
☐ **Pit:** Subsection F, G or J of 19.15.17.11 NMAC
Temporary: ☐ Drilling ☐ Workover
☐ Permanent ☐ Emergency ☐ Cavitation ☐ P&A ☐ Multi-Well Fluid Management Low Chloride Drilling Fluid ☐ yes ☐ no
☐ Lined ☐ Unlined Liner type: Thickness _____ mil ☐ LLDPE ☐ HDPE ☐ PVC ☐ Other _____
☐ String-Reinforced
Liner Seams: ☐ Welded ☐ Factory ☐ Other _____ Volume: _____ bbl Dimensions: L _____ x W _____ x D _____

3.
☒ **Below-grade tank:** Subsection I of 19.15.17.11 NMAC **TANK ID: A**
Volume: 21.0 bbl Type of fluid: Produced Water
Tank Construction material: Steel
☐ Secondary containment with leak detection ☐ Visible sidewalls, liner, 6-inch lift and automatic overflow shut-off
☐ Visible sidewalls and liner ☐ Visible sidewalls only ☒ Other SINGLE WALLED DOUBLE BOTTOMED SIDEWALLS NOT VISIBLE
Liner type: Thickness _____ mil ☐ HDPE ☐ PVC ☐ Other _____

4.
☐ **Alternative Method:**
Submittal of an exception request is required. Exceptions must be submitted to the Santa Fe Environmental Bureau office for consideration of approval.

5.
Fencing: Subsection D of 19.15.17.11 NMAC (*Applies to permanent pits, temporary pits, and below-grade tanks*)
☐ Chain link, six feet in height, two strands of barbed wire at top (*Required if located within 1000 feet of a permanent residence, school, hospital, institution or church*)
☐ Four foot height, four strands of barbed wire evenly spaced between one and four feet
☐ Alternate. Please specify _____

6.

Netting: Subsection E of 19.15.17.11 NMAC (*Applies to permanent pits and permanent open top tanks*)

- ☐ Screen ☐ Netting ☐ Other _____
- ☐ Monthly inspections (If netting or screening is not physically feasible)

7.

Signs: Subsection C of 19.15.17.11 NMAC

- ☐ 12"x 24", 2" lettering, providing Operator's name, site location, and emergency telephone numbers
- ☒ Signed in compliance with 19.15.16.8 NMAC

8.

Variations and Exceptions:

Justifications and/or demonstrations of equivalency are required. Please refer to 19.15.17 NMAC for guidance.

Please check a box if one or more of the following is requested, if not leave blank:

- ☐ Variance(s): Requests must be submitted to the appropriate division district for consideration of approval.
- ☐ Exception(s): Requests must be submitted to the Santa Fe Environmental Bureau office for consideration of approval.

9.

Siting Criteria (regarding permitting): 19.15.17.10 NMAC***Instructions: The applicant must demonstrate compliance for each siting criteria below in the application. Recommendations of acceptable source material are provided below. Siting criteria does not apply to drying pads or above-grade tanks.*****General siting****Ground water is less than 25 feet below the bottom of a low chloride temporary pit or below-grade tank.**

- ☒ NM Office of the State Engineer - iWATERS database search; ☐ USGS; ☐ Data obtained from nearby wells

☐ Yes ☒ No

☐ NA

Ground water is less than 50 feet below the bottom of a Temporary pit, permanent pit, or Multi-Well Fluid Management pit.

NM Office of the State Engineer - iWATERS database search; USGS; Data obtained from nearby wells

☐ Yes ☐ No

☐ NA

Within incorporated municipal boundaries or within a defined municipal fresh water well field covered under a municipal ordinance adopted pursuant to NMSA 1978, Section 3-27-3, as amended. **(Does not apply to below grade tanks)**

- Written confirmation or verification from the municipality; Written approval obtained from the municipality

☐ Yes ☐ No

Within the area overlying a subsurface mine. **(Does not apply to below grade tanks)**

- Written confirmation or verification or map from the NM EMNRD-Mining and Mineral Division

☐ Yes ☐ No

Within an unstable area. **(Does not apply to below grade tanks)**

- Engineering measures incorporated into the design; NM Bureau of Geology & Mineral Resources; USGS; NM Geological Society; Topographic map

☐ Yes ☐ No

Within a 100-year floodplain. **(Does not apply to below grade tanks)**

- FEMA map

☐ Yes ☐ No

Below Grade Tanks

Within 100 feet of a continuously flowing watercourse, significant watercourse, lake bed, sinkhole, wetland or playa lake (measured from the ordinary high-water mark).

- Topographic map; Visual inspection (certification) of the proposed site

☐ Yes ☒ No

Within 200 horizontal feet of a spring or a fresh water well used for public or livestock consumption;.

- NM Office of the State Engineer - iWATERS database search; Visual inspection (certification) of the proposed site

☐ Yes ☒ No

Temporary Pit using Low Chloride Drilling Fluid (maximum chloride content 15,000 mg/liter)

Within 100 feet of a continuously flowing watercourse, or any other significant watercourse or within 200 feet of any lakebed, sinkhole, or playa lake (measured from the ordinary high-water mark). (Applies to low chloride temporary pits.)

- Topographic map; Visual inspection (certification) of the proposed site

☐ Yes ☐ No

Within 300 feet from a occupied permanent residence, school, hospital, institution, or church in existence at the time of initial application.

- Visual inspection (certification) of the proposed site; Aerial photo; Satellite image

☐ Yes ☐ No

Within 200 horizontal feet of a spring or a private, domestic fresh water well used by less than five households for domestic or stock watering purposes, or 300feet of any other fresh water well or spring, in existence at the time of the initial application.

NM Office of the State Engineer - iWATERS database search; Visual inspection (certification) of the proposed site

☐ Yes ☐ No

Within 100 feet of a wetland.

- US Fish and Wildlife Wetland Identification map; Topographic map; Visual inspection (certification) of the proposed site

☐ Yes ☐ No

Temporary Pit Non-low chloride drilling fluid

Within 300 feet of a continuously flowing watercourse, or any other significant watercourse, or within 200 feet of any lakebed, sinkhole, or playa lake (measured from the ordinary high-water mark).

- Topographic map; Visual inspection (certification) of the proposed site

☐ Yes ☐ No

Within 300 feet from a permanent residence, school, hospital, institution, or church in existence at the time of initial application.

- Visual inspection (certification) of the proposed site; Aerial photo; Satellite image

☐ Yes ☐ No

Within 500 horizontal feet of a spring or a private, domestic fresh water well used by less than five households for domestic or stock watering purposes, or 1000 feet of any other fresh water well or spring, in the existence at the time of the initial application;

- NM Office of the State Engineer - iWATERS database search; Visual inspection (certification) of the proposed site

☐ Yes ☐ No

Within 300 feet of a wetland.

- US Fish and Wildlife Wetland Identification map; Topographic map; Visual inspection (certification) of the proposed site

☐ Yes ☐ No

Permanent Pit or Multi-Well Fluid Management Pit

Within 300 feet of a continuously flowing watercourse, or 200 feet of any other significant watercourse, or lakebed, sinkhole, or playa lake (measured from the ordinary high-water mark).

- Topographic map; Visual inspection (certification) of the proposed site

☐ Yes ☐ No

Within 1000 feet from a permanent residence, school, hospital, institution, or church in existence at the time of initial application.

- Visual inspection (certification) of the proposed site; Aerial photo; Satellite image

☐ Yes ☐ No

Within 500 horizontal feet of a spring or a fresh water well used for domestic or stock watering purposes, in existence at the time of initial application.

- NM Office of the State Engineer - iWATERS database search; Visual inspection (certification) of the proposed site

☐ Yes ☐ No

Within 500 feet of a wetland.

- US Fish and Wildlife Wetland Identification map; Topographic map; Visual inspection (certification) of the proposed site

☐ Yes ☐ No

10.

Temporary Pits, Emergency Pits, and Below-grade Tanks Permit Application Attachment Checklist: Subsection B of 19.15.17.9 NMAC

Instructions: Each of the following items must be attached to the application. Please indicate, by a check mark in the box, that the documents are attached.

- ☒ Hydrogeologic Report (Below-grade Tanks) - based upon the requirements of Paragraph (4) of Subsection B of 19.15.17.9 NMAC
- ☐ Hydrogeologic Data (Temporary and Emergency Pits) - based upon the requirements of Paragraph (2) of Subsection B of 19.15.17.9 NMAC
- ☒ Siting Criteria Compliance Demonstrations - based upon the appropriate requirements of 19.15.17.10 NMAC
- ☒ Design Plan - based upon the appropriate requirements of 19.15.17.11 NMAC
- ☒ Operating and Maintenance Plan - based upon the appropriate requirements of 19.15.17.12 NMAC
- ☒ Closure Plan (Please complete Boxes 14 through 18, if applicable) - based upon the appropriate requirements of Subsection C of 19.15.17.9 NMAC and 19.15.17.13 NMAC

☐ Previously Approved Design (attach copy of design) API Number: _____ or Permit Number: _____

11.

Multi-Well Fluid Management Pit Checklist: Subsection B of 19.15.17.9 NMAC

Instructions: Each of the following items must be attached to the application. Please indicate, by a check mark in the box, that the documents are attached.

- ☐ Design Plan - based upon the appropriate requirements of 19.15.17.11 NMAC
- ☐ Operating and Maintenance Plan - based upon the appropriate requirements of 19.15.17.12 NMAC
- ☐ A List of wells with approved application for permit to drill associated with the pit.
- ☐ Closure Plan (Please complete Boxes 14 through 18, if applicable) - based upon the appropriate requirements of Subsection C of 19.15.17.9 NMAC and 19.15.17.13 NMAC
- ☐ Hydrogeologic Data - based upon the requirements of Paragraph (4) of Subsection B of 19.15.17.9 NMAC
- ☐ Siting Criteria Compliance Demonstrations - based upon the appropriate requirements of 19.15.17.10 NMAC

☐ Previously Approved Design (attach copy of design) API Number: _____ or Permit Number: _____

12.

Permanent Pits Permit Application Checklist: Subsection B of 19.15.17.9 NMAC

Instructions: Each of the following items must be attached to the application. Please indicate, by a check mark in the box, that the documents are attached.

- ☐ Hydrogeologic Report - based upon the requirements of Paragraph (1) of Subsection B of 19.15.17.9 NMAC
☐ Siting Criteria Compliance Demonstrations - based upon the appropriate requirements of 19.15.17.10 NMAC
☐ Climatological Factors Assessment
☐ Certified Engineering Design Plans - based upon the appropriate requirements of 19.15.17.11 NMAC
☐ Dike Protection and Structural Integrity Design - based upon the appropriate requirements of 19.15.17.11 NMAC
☐ Leak Detection Design - based upon the appropriate requirements of 19.15.17.11 NMAC
☐ Liner Specifications and Compatibility Assessment - based upon the appropriate requirements of 19.15.17.11 NMAC
☐ Quality Control/Quality Assurance Construction and Installation Plan
☐ Operating and Maintenance Plan - based upon the appropriate requirements of 19.15.17.12 NMAC
☐ Freeboard and Overtopping Prevention Plan - based upon the appropriate requirements of 19.15.17.11 NMAC
☐ Nuisance or Hazardous Odors, including H₂S, Prevention Plan
☐ Emergency Response Plan
☐ Oil Field Waste Stream Characterization
☐ Monitoring and Inspection Plan
☐ Erosion Control Plan
☐ Closure Plan - based upon the appropriate requirements of Subsection C of 19.15.17.9 NMAC and 19.15.17.13 NMAC

13.

Proposed Closure: 19.15.17.13 NMAC

Instructions: Please complete the applicable boxes, Boxes 14 through 18, in regards to the proposed closure plan.

- Type: ☐ Drilling ☐ Workover ☐ Emergency ☐ Cavitation ☐ P&A ☐ Permanent Pit ☒ Below-grade Tank ☐ Multi-well Fluid Management Pit
☐ Alternative
- Proposed Closure Method: ☒ Waste Excavation and Removal
☐ Waste Removal (Closed-loop systems only)
☐ On-site Closure Method (Only for temporary pits and closed-loop systems)
☐ In-place Burial ☐ On-site Trench Burial
☐ Alternative Closure Method

14.

Waste Excavation and Removal Closure Plan Checklist: (19.15.17.13 NMAC) **Instructions:** Each of the following items must be attached to the closure plan. Please indicate, by a check mark in the box, that the documents are attached.

- ☒ Protocols and Procedures - based upon the appropriate requirements of 19.15.17.13 NMAC
☒ Confirmation Sampling Plan (if applicable) - based upon the appropriate requirements of Subsection C of 19.15.17.13 NMAC
☒ Disposal Facility Name and Permit Number (for liquids, drilling fluids and drill cuttings)
☒ Soil Backfill and Cover Design Specifications - based upon the appropriate requirements of Subsection H of 19.15.17.13 NMAC
☒ Re-vegetation Plan - based upon the appropriate requirements of Subsection H of 19.15.17.13 NMAC
☒ Site Reclamation Plan - based upon the appropriate requirements of Subsection H of 19.15.17.13 NMAC

15.

Siting Criteria (regarding on-site closure methods only): 19.15.17.10 NMAC

Instructions: Each siting criteria requires a demonstration of compliance in the closure plan. Recommendations of acceptable source material are provided below. Requests regarding changes to certain siting criteria require justifications and/or demonstrations of equivalency. Please refer to 19.15.17.10 NMAC for guidance.

Ground water is less than 25 feet below the bottom of the buried waste. - NM Office of the State Engineer - iWATERS database search; USGS; Data obtained from nearby wells	<input type="checkbox"/> Yes <input type="checkbox"/> No <input type="checkbox"/> NA
Ground water is between 25-50 feet below the bottom of the buried waste - NM Office of the State Engineer - iWATERS database search; USGS; Data obtained from nearby wells	<input type="checkbox"/> Yes <input type="checkbox"/> No <input type="checkbox"/> NA
Ground water is more than 100 feet below the bottom of the buried waste. - NM Office of the State Engineer - iWATERS database search; USGS; Data obtained from nearby wells	<input type="checkbox"/> Yes <input type="checkbox"/> No <input type="checkbox"/> NA
Within 100 feet of a continuously flowing watercourse, or 200 feet of any other significant watercourse, lakebed, sinkhole, or playa lake (measured from the ordinary high-water mark). - Topographic map; Visual inspection (certification) of the proposed site	<input type="checkbox"/> Yes <input type="checkbox"/> No
Within 300 feet from a permanent residence, school, hospital, institution, or church in existence at the time of initial application. - Visual inspection (certification) of the proposed site; Aerial photo; Satellite image	<input type="checkbox"/> Yes <input type="checkbox"/> No
Within 300 horizontal feet of a private, domestic fresh water well or spring used for domestic or stock watering purposes, in existence at the time of initial application. - NM Office of the State Engineer - iWATERS database; Visual inspection (certification) of the proposed site	<input type="checkbox"/> Yes <input type="checkbox"/> No
Written confirmation or verification from the municipality; Written approval obtained from the municipality	<input type="checkbox"/> Yes <input type="checkbox"/> No
Within 300 feet of a wetland. US Fish and Wildlife Wetland Identification map; Topographic map; Visual inspection (certification) of the proposed site	<input type="checkbox"/> Yes <input type="checkbox"/> No
Within incorporated municipal boundaries or within a defined municipal fresh water well field covered under a municipal ordinance	

adopted pursuant to NMSA 1978, Section 3-27-3, as amended.

- Written confirmation or verification from the municipality; Written approval obtained from the municipality

☐ Yes ☐ No

Within the area overlying a subsurface mine.

- Written confirmation or verification or map from the NM EMNRD-Mining and Mineral Division

☐ Yes ☐ No

Within an unstable area.

- Engineering measures incorporated into the design; NM Bureau of Geology & Mineral Resources; USGS; NM Geological Society; Topographic map

☐ Yes ☐ No

Within a 100-year floodplain.

- FEMA map

☐ Yes ☐ No

16. **On-Site Closure Plan Checklist:** (19.15.17.13 NMAC) *Instructions: Each of the following items must be attached to the closure plan. Please indicate, by a check mark in the box, that the documents are attached.*

- ☐ Siting Criteria Compliance Demonstrations - based upon the appropriate requirements of 19.15.17.10 NMAC
- ☐ Proof of Surface Owner Notice - based upon the appropriate requirements of Subsection E of 19.15.17.13 NMAC
- ☐ Construction/Design Plan of Burial Trench (if applicable) based upon the appropriate requirements of Subsection K of 19.15.17.11 NMAC
- ☐ Construction/Design Plan of Temporary Pit (for in-place burial of a drying pad) - based upon the appropriate requirements of 19.15.17.11 NMAC
- ☐ Protocols and Procedures - based upon the appropriate requirements of 19.15.17.13 NMAC
- ☐ Confirmation Sampling Plan (if applicable) - based upon the appropriate requirements of 19.15.17.13 NMAC
- ☐ Waste Material Sampling Plan - based upon the appropriate requirements of 19.15.17.13 NMAC
- ☐ Disposal Facility Name and Permit Number (for liquids, drilling fluids and drill cuttings or in case on-site closure standards cannot be achieved)
- ☐ Soil Cover Design - based upon the appropriate requirements of Subsection H of 19.15.17.13 NMAC
- ☐ Re-vegetation Plan - based upon the appropriate requirements of Subsection H of 19.15.17.13 NMAC
- ☐ Site Reclamation Plan - based upon the appropriate requirements of Subsection H of 19.15.17.13 NMAC

17.

Operator Application Certification:

I hereby certify that the information submitted with this application is true, accurate and complete to the best of my knowledge and belief.

Name (Print): Steve Moskal Steven Moskal Title: Environmental Coordinator

Signature:  2020.04.02 13:45:33 Date: 04/02/2020

e-mail address: steven.moskal@bpx.com Telephone: 505) 330-9179

18.

OCD Approval: ☐ Permit Application (including closure plan) ☒ Closure Plan (only) ☐ OCD Conditions (see attachment)

OCD Representative Signature:  Approval Date: 4/6/2020

Title: Environmental Specialist OCD Permit Number: 16529

19.

Closure Report (required within 60 days of closure completion): 19.15.17.13 NMAC

Instructions: Operators are required to obtain an approved closure plan prior to implementing any closure activities and submitting the closure report. The closure report is required to be submitted to the division within 60 days of the completion of the closure activities. Please do not complete this section of the form until an approved closure plan has been obtained and the closure activities have been completed.

☐ Closure Completion Date: _____

20.

Closure Method:

- ☐ Waste Excavation and Removal ☐ On-Site Closure Method ☐ Alternative Closure Method ☐ Waste Removal (Closed-loop systems only)
- ☐ If different from approved plan, please explain.

21.

Closure Report Attachment Checklist: *Instructions: Each of the following items must be attached to the closure report. Please indicate, by a check mark in the box, that the documents are attached.*

- ☐ Proof of Closure Notice (surface owner and division)
- ☐ Proof of Deed Notice (required for on-site closure for private land only)
- ☐ Plot Plan (for on-site closures and temporary pits)
- ☐ Confirmation Sampling Analytical Results (if applicable)
- ☐ Waste Material Sampling Analytical Results (required for on-site closure)
- ☐ Disposal Facility Name and Permit Number
- ☐ Soil Backfilling and Cover Installation
- ☐ Re-vegetation Application Rates and Seeding Technique
- ☐ Site Reclamation (Photo Documentation)

On-site Closure Location: Latitude _____ Longitude _____ NAD: ☐ 1927 ☐ 1983

22.

Operator Closure Certification:

I hereby certify that the information and attachments submitted with this closure report is true, accurate and complete to the best of my knowledge and belief. I also certify that the closure complies with all applicable closure requirements and conditions specified in the approved closure plan.

Name (Print): _____ Title: _____

Signature: _____ Date: _____

e-mail address: _____ Telephone: _____

SITING AND HYDRO-GEOLOGICAL REPORT – CEDAR HILL GATHERING PIPELINE

SITING CRITERIA 19.15.17.10 NMAC

Depth to groundwater at the site is estimated to be greater than 100 feet (ft.) below ground surface (bgs). This estimation is based on data from Stone and others (1983), and depth to groundwater data obtained from a water well permitted by the New Mexico State Engineer's Office (NMOSE). Local topography and proximity to adjacent water features are also considered.

There are no water wells permitted by NMOSE within 200 ft. from the below-grade tank (BGT) (Figure 1). A topographic map (Figure 2) demonstrates that the BGT is not within 100 feet of any continuously flowing watercourse, significant watercourse, lake bed, sinkhole, wetland, or playa lake as measured from the ordinary high water mark.

The BGT subject to the attached application for closure only under 19.15.17 NMAC (New Mexico Administrative Code) was in existence prior to promulgation of 19.15.17 NMAC. A review of the best available data and a visual inspection of the siting criteria of 19.15.17 NMAC specific to the BGT in question demonstrate that the BGT does not appear to pose an imminent threat to public health and the environment.

LOCAL GEOLOGY AND HYDROLOGY

Groundwater is estimated at approximately 125 ft. bgs. This estimation is based on Google Earth's aerial photography (Imagery date: 4/6/2019) elevation difference between the site's ground level (5,943 ft.) and water well SJ04133POD1 (attached) groundwater elevation (5,818 ft.), located approximately 0.6 miles, S4E from the BGT (see Figure 3).

This particular site is located east of Tucker canyon and northwest of the Animas River on the Nacimient Formation. Topography is dominated by the main channel of the river, its floodplain and terrace deposits. Moving away from the Animas River, eroded surfaces of the Nacimient Formation form slopes that rise away from the river.

REGIONAL GEOLOGY AND HYDROLOGY

The San Juan Basin is situated in the Navajo section of the Colorado Plateau and is characterized by broad open valleys, mesas, buttes and hogbacks. Away from major valleys and canyons topographic relief is generally low. Native vegetation is sparse and shrubby. Drainage is mainly by the San Juan River, the only permanent stream in the Navajo Section of the Colorado Plateau. The San Juan River is a tributary of the Colorado River. Major tributaries include the Animas, Chaco and La Plata Rivers. Flow of the San Juan River across the basin is regulated by the Navajo Dam, located about 30 miles northeast of Farmington, New Mexico. The climate is arid to semiarid with an average annual precipitation of 8 to 10 inches. Soils within the basin consist of weathered parent rock derived from predominantly physical means mostly from eolian depositional system with fluvial having a lesser impact.

Cretaceous and Tertiary sandstones, as well as Quaternary Alluvial deposits, serve as the primary aquifers in the San Juan Basin (Stone et al., 1983). The Nacimiento Formation of Paleocene age occurs at the surface in a broad belt at the western and southern edges of the central San Juan Basin and dips beneath the San Jose Formation in the center. The lower part of the Nacimiento Formation is composed of interbedded black, carbonaceous mudstones and white coarse-grained sandstones. The upper part is comprised of mudstone and sandstone. It is generally slope-forming, even within the sandstone units. Thickness of the Nacimiento ranges from 418 to 2,232 feet. Aquifers within the coarser and continuous sandstone bodies of the Nacimiento Formation are between 0 and 1,000 feet deep in this section of the basin. Wells within these bodies flow from 16 to 100 gallons per minute (gpm), and transmissivities are expected to be 100 ft²/d (Stone et al, 1983). Groundwater within these aquifers flows toward the Animas River.

REFERENCES

Circular 154—Guidebook to coal geology of northwest New Mexico By E. C. Beaumont, J. W. Shomaker, W. J. Stone, and others, 1976

Stone, et al., 1983, Hydrogeology and Water Resources of the San Juan Basin, New Mexico, Socorro, New Mexico Bureau of Mines and Mineral Resources Hydrologic Report 6, 70 p



New Mexico Office of the State Engineer

Wells with Well Log Information

No wells found.

Basin/County Search:

Basin: San Juan

UTMNAD83 Radius Search (in meters):

Easting (X): 239194.87

Northing (Y): 4090599.43

Radius: 60.96

The data is furnished by the NMOSE/ISC and is accepted by the recipient with the expressed understanding that the OSE/ISC make no warranties, expressed or implied, concerning the accuracy, completeness, reliability, usability, or suitability for any particular purpose of the data.



New Mexico Office of the State Engineer

Wells Without Well Log Information

No wells found.

Basin/County Search:

Basin: San Juan

UTMNAD83 Radius Search (in meters):

Easting (X): 239194.87

Northing (Y): 4090599.43

Radius: 60.96



New Mexico Office of the State Engineer

Point of Diversion with Meter Attached

No PODs found.

Basin/County Search:

Basin: San Juan

UTMNAD83 Radius Search (in meters):

Easting (X): 239194.87


Northing (Y): 4090599.43

Radius: 60.96

The data is furnished by the NMOSE/ISC and is accepted by the recipient with the expressed understanding that the OSE/ISC make no warranties, expressed or implied, concerning the accuracy, completeness, reliability, usability, or suitability for any particular purpose of the data.



New Mexico Office of the State Engineer Point of Diversion Summary

		(quarters are 1=NW 2=NE 3=SW 4=SE)							
		(quarters are smallest to largest)		(NAD83 UTM in meters)					
Well Tag	POD Number	Q64	Q16	Q4	Sec	Tws	Rng	X	Y
	SJ 04133 POD1	1	4	1	07	31N	10W	239230	4089585 
x									
Driller License: 717		Driller Company: WESTERN WATER WELLS							
Driller Name: HOOD, TERRY									
Drill Start Date: 03/15/2015		Drill Finish Date: 03/30/2015		Plug Date:					
Log File Date: 09/30/2015		PCW Rcv Date:		Source: Shallow					
Pump Type:		Pipe Discharge Size:		Estimated Yield: 4 GPM					
Casing Size: 4.50		Depth Well: 300 feet		Depth Water: 120 feet					
x									
Water Bearing Stratifications:		Top	Bottom	Description					
		0	20	Sandstone/Gravel/Conglomerate					
		120	300	Sandstone/Gravel/Conglomerate					
x									
Casing Perforations:		Top	Bottom						
		0	280						
		280	300						
x									

The data is furnished by the NMOSE/ISC and is accepted by the recipient with the expressed understanding that the OSE/ISC make no warranties, expressed or implied, concerning the accuracy, completeness, reliability, usability, or suitability for any particular purpose of the data.

4/1/20 4:18 PM

POINT OF DIVERSION SUMMARY



WELL RECORD & LOG

OFFICE OF THE STATE ENGINEER

www.ose.state.nm.us

STATE ENGINEER OFFICE
AZTEC, NEW MEXICO

2015 SEP 30 AM 10:50

1. GENERAL AND WELL LOCATION	OSE POD NUMBER (WELL NUMBER)				OSE FILE NUMBER(S) SJ 4133																	
	WELL OWNER NAME(S) Lindy Edwards				PHONE (OPTIONAL)																	
	WELL OWNER MAILING ADDRESS PO Box 1174				CITY Aztec STATE NM ZIP 87410																	
	<table border="1"> <tr> <th>WELL LOCATION (FROM GPS)</th> <th>DEGREES</th> <th>MINUTES</th> <th>SECONDS</th> <th></th> </tr> <tr> <td>LATITUDE</td> <td>36</td> <td>54</td> <td>56</td> <td>N</td> </tr> <tr> <td>LONGITUDE</td> <td>107</td> <td>55</td> <td>38</td> <td>W</td> </tr> </table>				WELL LOCATION (FROM GPS)	DEGREES	MINUTES	SECONDS		LATITUDE	36	54	56	N	LONGITUDE	107	55	38	W	* ACCURACY REQUIRED: ONE TENTH OF A SECOND * DATUM REQUIRED: WGS 84		
WELL LOCATION (FROM GPS)	DEGREES	MINUTES	SECONDS																			
LATITUDE	36	54	56	N																		
LONGITUDE	107	55	38	W																		
DESCRIPTION RELATING WELL LOCATION TO STREET ADDRESS AND COMMON LANDMARKS - PLSS (SECTION, TOWNSHIP, RANGE) WHERE AVAILABLE																						
2. DRILLING & CASING INFORMATION	LICENSE NUMBER WD717		NAME OF LICENSED DRILLER Terry Hood			NAME OF WELL DRILLING COMPANY																
	DRILLING STARTED 3/15/15		DRILLING ENDED 3/30/15		DEPTH OF COMPLETED WELL (FT) 300		BORE HOLE DEPTH (FT)															
	DEPTH WATER FIRST ENCOUNTERED (FT) 120						STATIC WATER LEVEL IN COMPLETED WELL (FT) 120															
	COMPLETED WELL IS: <input type="radio"/> ARTESIAN <input type="radio"/> DRY HOLE <input checked="" type="radio"/> SHALLOW (UNCONFINED)																					
	DRILLING FLUID: <input type="radio"/> AIR <input type="radio"/> MUD ADDITIVES - SPECIFY:																					
	DRILLING METHOD: <input type="radio"/> ROTARY <input type="radio"/> HAMMER <input checked="" type="radio"/> CABLE TOOL <input type="radio"/> OTHER - SPECIFY:																					
	DEPTH (feet bgl)		BORE HOLE DIAM (inches)	CASING MATERIAL AND/OR GRADE (include each casing string, and note sections of screen)	CASING CONNECTION TYPE	CASING INSIDE DIAM. (inches)	CASING WALL THICKNESS (inches)	SLOT SIZE (inches)														
	FROM	TO																				
	0	280	7	4 1/2 PVC		4 1/2																
	280	300	7	4 1/2 PVC		4 1/2		.060														
3. ANNULAR MATERIAL	DEPTH (feet bgl)		BORE HOLE DIAM. (inches)	LIST ANNULAR SEAL MATERIAL AND GRAVEL PACK SIZE-RANGE BY INTERVAL	AMOUNT (cubic feet)	METHOD OF PLACEMENT																
	FROM	TO																				
	0	20	9	Concrete	4	Surface Pour																
	120	300	7	Gravel																		

FOR OSE INTERNAL USE

WR-20 WELL RECORD & LOG (Version 06/08/2012)

FILE NUMBER	SJ-4133	POD NUMBER	1	TRN NUMBER	579180
LOCATION	31N. 10W. 07.141				PAGE 1 OF 2

STATE-EMPLOYER OFFICE
AZEC, NEW MEXICO

FOR USE INTERNAL USE		WR-20 WELL RECORD & LOG (Version 06/08/2012)	
FILE NUMBER	SJ-4133	POD NUMBER	TRN NUMBER
LOCATION	31N-10W-07-141		PAGE 2 OF 2

FIGURE 1

Cedar Hill Gathering BGT

(K) Sec. 6, T31N, R10W
App #: BPPK063110

Imagery date: 4/6/2019
BGT GPS Coord.: 36.925374,-107.927966

200 ft. radius
from 21 bbl bgt center

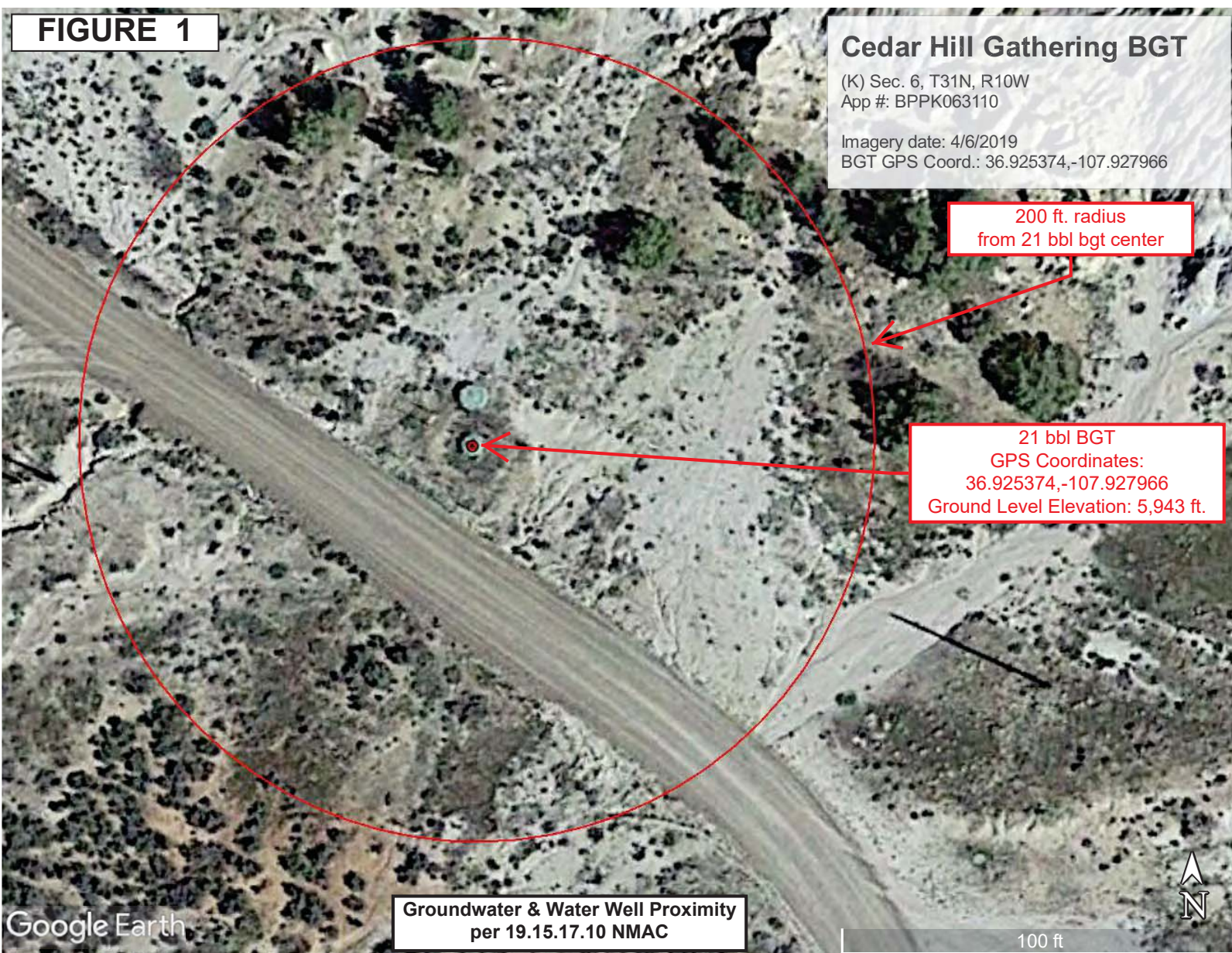
21 bbl BGT
GPS Coordinates:
36.925374,-107.927966
Ground Level Elevation: 5,943 ft.

Groundwater & Water Well Proximity
per 19.15.17.10 NMAC

100 ft



Google Earth



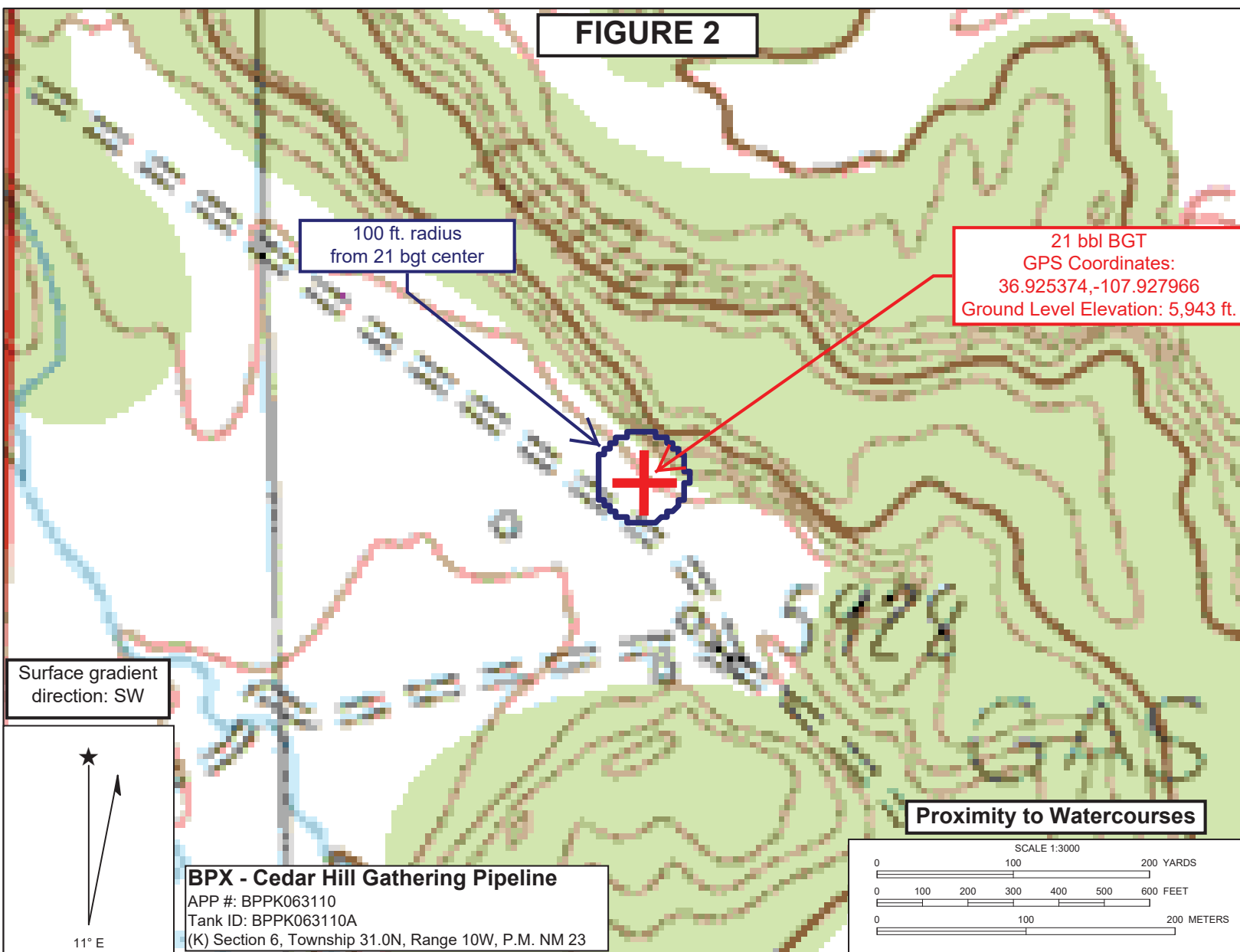


FIGURE 3

Ground Level Elevation: 5,943 ft.

Cedar Hill Gathering BGT

(K) Sec. 6, T31N, R10W
App #: BPPK063110

Imagery date: 4/6/2019
BGT GPS Coord.: 36.925374,-107.927966
SJ04133POD1 GPS Coord.: 36.916253,-107.927223

Approximately 0.6 miles
S4E from 21 BGT

SJ04133POD1
GPS Coordinates:
36.916253,-107.927223
Ground Level Elevation: 5,938 ft.
Water Level Elevation: 5,818 ft.

Groundwater & Water Well Proximity
per 19.15.17.10 NMAC

1000 ft

N

Google Earth

© 2020 Google

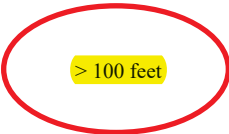
BP AMERICA PRODUCTION COMPANY
SAN JUAN BASIN, NORTHWEST NEW MEXICO

BELOW-GRADE TANK CLOSURE PLAN

This plan will address the method, procedures, and protocols for closure of below-grade tanks (BGTs) on BP America Production Company (BP) well sites pursuant to Subsection A of 19.15.17.13 NMAC. As stipulated in Paragraph (1) of Subsection C of 19.15.17.13 NMAC, BP will not commence closure without first obtaining approval of the closure plan submitted pursuant to Paragraph (3) of Subsection B of 19.15.17.9 NMAC. If deviations from this plan are necessary, BP will request preapproval from the Division District III office of any specific changes and will be included on form C-144. BP shall close its BGTs within 60 days of cessation of the operation as required by Paragraph (4) of Subsection G of 19.15.17.13 NMAC.

General Closure Plan

1. BP shall notify the surface owner by certified mail; return receipt requested that it plans to close a BGT. Notice given will be at least 72 hours in advanced, but not more than one week prior to any closure operation. The notice shall include the well name, API number, and legal description of the location. Evidence of mailing of the notice to the address of the surface owner shown in the county tax records demonstrates compliance with this requirement.
2. BP shall notify the Division District III office verbally and in writing at least 72 hours, but not more than one week, prior to any closure operation. The notice shall include the Operator's name, and the location of the BGT to be closed by unit letter, section, township and range. If the BGT closure is associated with a particular well, then the notice shall also include the well's name, number and API number.
3. Within 60 days of cessation of operations, BP shall remove liquids and sludge from the BGT prior to implementing a closure method and dispose of the liquids and sludge in a NMOCD approved facility. The facilities to be used are:
 - a. BP Crouch Mesa Landfarm, Permit NM-02-003 (Solids)
 - b. JFJ Landfarm, Permit NM-01-010(B) (Solids and Sludge)
 - c. Basin Disposal, Permit NM-01-0005 (Liquids)
 - d. Envirotech Inc Soil Remediation Facility, Permit NM-01-0011 (Solids and Sludge)
 - e. BP Operated E.E. Elliott SWD #1, API 30-045-27799 (Liquids)
 - f. BP Operated 13 GCU SWD #1, API 30-045-28601 (Liquids)
 - g. BP Operated GCU 259 SWD, API 30-045-20006 (Liquids)
 - h. BP Operated GCU 306 SWD, API 30-045-24286 (Liquids)
 - i. BP Operated GCU 307 SWD, API 30-045-24248 (Liquids)
 - j. BP Operated GCU 328 SWD, API 30-045-24735 (Liquids)
 - k. BP Operated Pritchard SWD #1, API 30-045-28351 (Liquids)
4. BP shall remove the BGT and dispose of it in a NMOCD approved facility or recycle, reuse, or reclaim it in a manner that the Division District III office approves. Documentation as to the final disposition of the removed BGT will be provided in the final closure report.
5. Within six months of cessation of operations, BP shall remove any on-site equipment associated with a BGT unless the equipment is required for some other purpose.
6. BP shall test the soils beneath the BGT to determine whether a release has occurred. BP shall collect at a minimum: a five (5) point composite sample to include any obvious stained or wet soils, or other evidence of a release under the BGT. The composite sample shall be collected and analyzed as required for the constituents listed in Table I within Subparagraph (a) of Paragraph (3) of Subsection C of 19.15.17.13 NMAC (see Table 1 on following page).

Table 1 Closure Criteria for Soils Beneath Below-Grade Tanks			
Depth below bottom of pit to groundwater less than 10,000 mg/l TDS	Constituent	Method*	Limit**
≤50 feet	Chloride	EPA 300.0	600 mg/kg
	TPH	EPA SW-846 Method 418.1	100 mg/kg
	BTEX	EPA SW-846 Method 8021B or 8260B	50 mg/kg
	Benzene	EPA SW-846 Method 8021B or 8015M	10 mg/kg
51 feet-100 feet	Chloride	EPA 300.0	10,000 mg/kg
	TPH	EPA SW-846 Method 418.1	2,500 mg/kg
	GRO+DRO	EPA SW-846 Method 8015M	1,000 mg/kg
	BTEX	EPA SW-846 Method 8021B or 8260B	50 mg/kg
	Benzene	EPA SW-846 Method 8021B or 8015M	10 mg/kg
 > 100 feet	Chloride	EPA 300.0	20,000 mg/kg
	TPH	EPA SW-846 Method 418.1	2,500 mg/kg
	GRO+DRO	EPA SW-846 Method 8015M	1,000 mg/kg
	BTEX	EPA SW-846 Method 8021B or 8260B	50 mg/kg
	Benzene	EPA SW-846 Method 8021B or 8015M	10 mg/kg

Notes: mg/Kg = milligram per kilogram, BTEX = benzene, toluene, ethylbenzene, and total xylenes, TPH = total petroleum hydrocarbons, TDS = total dissolved solids.

* - Or other test methods approved by the division

** - Numerical limits or natural background level, whichever is greater

7. If any contaminant concentration exceeds those standards set in Table I, BP will acknowledge NMOCD's position to require additional delineation upon review of the results. BP will not proceed with any further closure activities until approval is first granted by NMOCD.
8. If the sampling demonstrates that all contaminant constituents do not exceed the concentrations specified in Table I, then BP shall backfill the excavation, with non-waste containing, uncontaminated, earthen material.
9. BP shall reclaim the BGT location and all areas associated with the BGT including associated access roads to a safe and stable condition that blends with the surrounding undisturbed area. BP shall substantially restore the impacted surface area to the condition that existed prior to oil and gas operations by placement of the soil cover as provided in Paragraph (2) of Subsection H of 19.15.17.13 NMAC, re-contour the BGT location and associated areas to a contour that approximates the original contour and blends with the surrounding topography and re-vegetate according to Paragraph (5) of Subsection H of 19.15.17.13 NMAC.
10. BP may propose an alternative to the re-vegetation or recontouring requirement if it can demonstrate to the NMOCD's District III office that the proposed alternative provides equal or greater prevention of erosion, and protection of fresh water, public health and the environment. BP will seek surface owner approval of the proposed alternative and provide written documentation of the surface owner's approval to NMOCD for its approval.
11. Areas reasonably needed for production operations or for subsequent drilling operations shall be compacted, covered, paved, or otherwise stabilized and maintained in such a way as to minimize dust and erosion to the extent practicable.

12. The soil cover for closures after site contouring, where the BGT has been removed and if necessary remediated beneath the BGT to chloride concentrations less than 600 mg/kg as analyzed by EPA Method 300.0, shall consist of the background thickness of topsoil or one foot or suitable material, whichever is greater.
13. The soil cover will be constructed to the site's existing grade and all practicable efforts will be made to prevent ponding of water and erosion of the cover material.
14. All areas disturbed by the closure of the BGT, except areas reasonably needed for production operations or for subsequent drilling operations, shall be reclaimed as early and as nearly as practicable to their original condition or their final land use and shall be maintained to control dust and minimize erosion to the extent practicable.
15. Topsoils and subsoils shall be replaced to their original relative positions and contoured so as to achieve erosion control, long-term stability and preservation of surface water flow patterns. The disturbed area then shall be reseeded in the first favorable growing season following closure of the BGT.
16. Reclamation of all disturbed areas no longer in use shall be considered complete when all ground surface disturbing activities at the site have been completed, and a uniform vegetative cover has been established that reflects a life-form ratio of plus or minus fifty percent (50%) of pre-disturbance levels and a total percent plant cover of at least seventy percent (70%) of pre-disturbance levels, excluding noxious weeds.
17. The re-vegetation and reclamation obligations imposed by other applicable federal or tribal agencies on lands managed by those agencies shall supersede these provisions and govern the obligations of BP subject to those provisions, provided that the other requirements provide equal or better protection of fresh water, human health and the environment.
18. Pursuant to Subparagraph (e) of Paragraph (5) of Subsection H of 19.15.17.13 NMAC, BP shall notify the NMOCD when reclamation and re-vegetation has been successfully achieved.
19. Within 60 days of closure completion, BP shall submit a closure report on NMOCD's form C-144, and will include the following;
 - a. necessary attachments to document all closure activities
 - b. sampling results
 - c. information required by 19.15.17 NMAC
 - d. details on back-filling, capping and covering, where applicable.
20. BP shall certify that all information in the report and attachments is accurate, truthful, and compliant with all applicable closure requirements and conditions specified in the approved closure plan.

SOUTHERN SAN JUAN BASIN (SSJB) Figure Citation List August 2019

Figure 1: Groundwater Greater Than 50 ft., Less Than 100 ft.

Layers: **Aerial Imagery:** **Google Earth Pro (10/5/2016)**

Evaluation completed by Blagg Engineering, Inc., Bloomfield, NM. (2019)

Figure 2: Proximity to Significant Watercourses

Layers: **Topographic Imagery: USGS (1999)**

USGS 24k Topographic map series. 1:24000. Maps are seamless, scanned images of USGS paper topographic maps. Data created using Terrain Navigator, Copyright 1999, Maptech Inc.