

District I
1625 N. French Dr., Hobbs, NM 88240
District II
811 S. 1st Street, Artesia, NM 88210
District III
1000 Rio Brazos Rd., Aztec, NM 87410
District IV
1220 S. St. Francis Dr., Santa Fe, NM 87505

State of New Mexico
Energy, Minerals & Natural Resources

Form C-101
Revised March 17, 1999

Oil Conservation Division
1220 S. St. Francis Dr.
Santa Fe, NM 87505

Submit to appropriate District Office
State Lease - 6 Copies
Fee Lease - 5 Copies

☐ AMENDED REPORT

APPLICATION FOR PERMIT TO DRILL, RE-ENTER, DEEPEN, PLUGBACK, OR ADD A ZONE

¹ Operator Name and Address XTO Energy Inc. 2700 Farmington Ave., Bldg. K. Ste 1		² OGRID Number 167067
⁴ Property Code 32286	⁵ Property Name Haynie	³ API Number 30-045-32234
		⁶ Well No. #4

⁷ Surface Location

UL or lot no.	Section	Township	Range	Lot. Idn	Feet from the	North/South Line	Feet from the	East/West line	County
D	4	30N	11W		670	North	670	West	San Juan

⁸ Proposed Bottom Hole Location If Different From Surface

UL or lot no.	Section	Township	Range	Lot. Idn	Feet from the	North/South Line	Feet from the	East/West line	County
⁹ Proposed Pool 1 Basin Dakota					¹⁰ Proposed Pool 2 Blanco Mesaverde				

¹¹ Work Type Code N	¹² Well Type Code G	¹³ Cable/Rotary R	¹⁴ Lease Type Code SP	¹⁵ Ground Level Elevation 5,820' Ground Level
¹⁶ Multiple Yes	¹⁷ Proposed Depth 7,000'	¹⁸ Formation Dakota/Mesaverde	¹⁹ Contractor Aztec Well Service	²⁰ Spud Date Summer, 2004

²¹ Proposed Casing and Cement Program

Hole Size	Casing Size	Casing weight/foot	Setting Depth	Sacks of Cement	Estimated TOC
12-1/4"	8-5/8"	24.0 #/ft	400'	280 sx	Surface
7-7/8"	4-1/2"	10.5 #/ft	7,000'	1,200 sx	Surface

²² Describe the proposed program. If this application is to DEEPEN or PLUG BACK, give the data on the present productive zone and proposed new productive zone.

Describe the blowout prevention program, if any. Use additional sheets if necessary.

Drl to 400' Run new 8-5/8" csg. Cmt csg w/280 sx Type III cmt (14.5 ppg, 1.39 cuft/sx) w/2% CaCl & 1/4# Celloflake. Attempt to circ cmt to surface. NU BOP. Test BOP. Mix mud. Drill ahead w/7-7/8 hole.

Drl to TD (@ 7,000'). Log well. Run new 4-1/2" csg to btm. Cmt csg with approx 1,025 sx Premium Lite cmt (65% cmt, 35% Poz, 6% gel) w/1/4# celloflake @ 12.5 ppg, 2.07 cuft/sx followed by 150 sx cl "H" cmt (neat) @ 15.6 ppg, 1.18 cuft/sx. Attempt to circ cmt to surface.

See enclosed drawing for BOP stack configuration.

²³ I hereby certify that the information given above is true and complete to the best of my knowledge and belief.		OIL CONSERVATION DIVISION	
Signature: <i>Jeffrey W. Patton</i> 3/12/04		Approved by: <i>[Signature]</i>	
Printed name: Jeffrey W. Patton		Title: DEPUTY OIL & GAS INSPECTOR, DIST. 40	
Title: Drilling Engineer		Approval Date: MAR 17 2004 Expiration Date: MAR 17 2005	
Date:	Phone:	Conditions of Approval:	
		Attached <input type="checkbox"/>	

DISTRICT I
P.O. Box 1980, Hobbs, N.M. 88241-1980

DISTRICT II
P.O. Drawer DD, Artesia, N.M. 88211-0719

DISTRICT III
1000 Rio Brazos Rd., Aztec, N.M. 87410

DISTRICT IV
PO Box 2088, Santa Fe, NM 87504-2088

State of New Mexico
Energy, Minerals & Natural Resources Department

OIL CONSERVATION DIVISION

P.O. Box 2088
Santa Fe, NM 87504-2088

Form C-102

Revised February 21, 1994

Instructions on back

Submit to Appropriate District Office

State Lease - 4 Copies

Fee Lease - 3 Copies

☐ AMENDED REPORT

WELL LOCATION AND ACREAGE DEDICATION PLAT

¹ API Number 30-045-32234	² Pool Code 72319	³ Pool Name BLANCO MESAVERDE
⁴ Property Code 32286	⁵ Property Name HAYNIE	⁶ Well Number 4
⁷ GRID No. 167067	⁸ Operator Name XTO ENERGY INC.	⁹ Elevation 5820

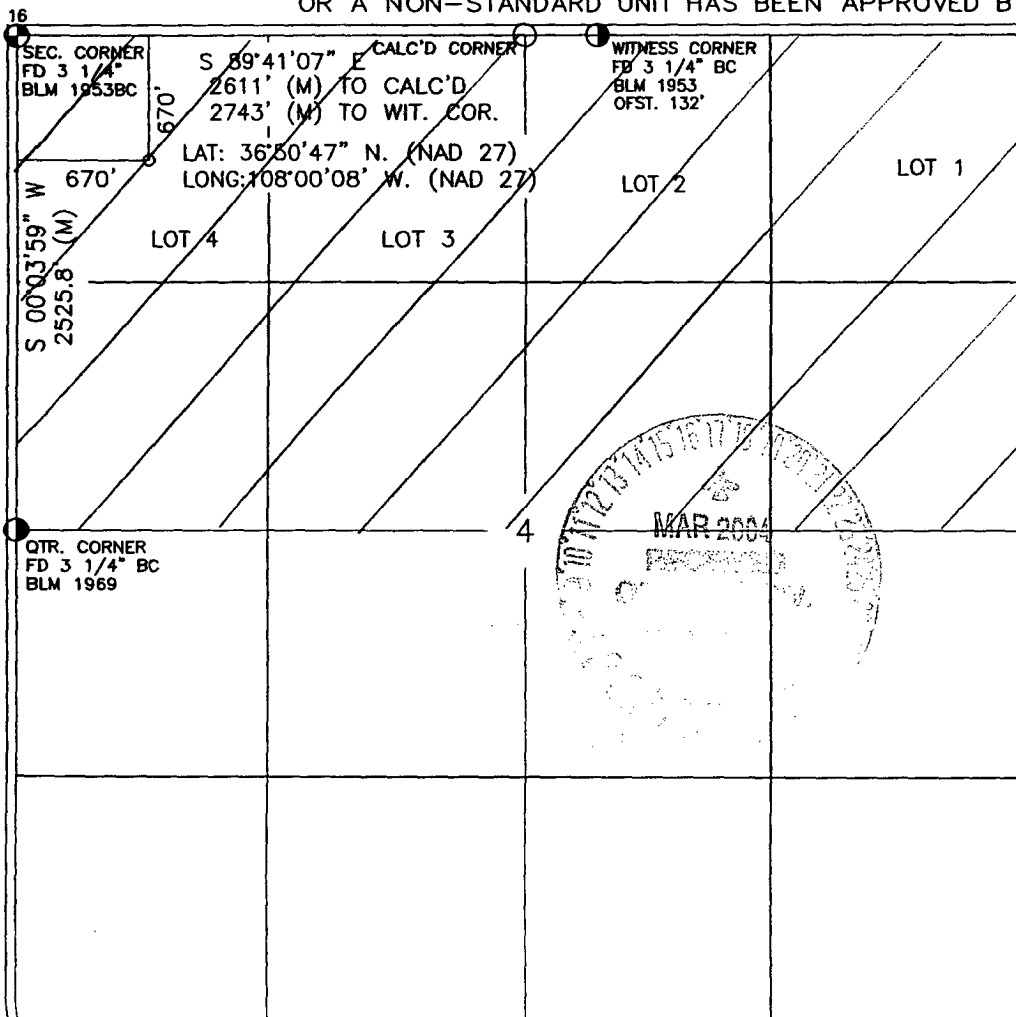
¹⁰ Surface Location

UL or lot no.	Section	Township	Range	Lot Idn	Feet from the	North/South line	Feet from the	East/West line	County
D	4	30-N	11-W		670	NORTH	670	WEST	SAN JUAN

¹¹ Bottom Hole Location If Different From Surface

UL or lot no.	Section	Township	Range	Lot Idn	Feet from the	North/South line	Feet from the	East/West line	County
¹² Dedicated Acres 319.8 315.89	N Z			¹³ Joint or Infill I	¹⁴ Consolidation Code		¹⁵ Order No.		

NO ALLOWABLE WILL BE ASSIGNED TO THIS COMPLETION UNTIL ALL INTERESTS HAVE BEEN CONSOLIDATED
OR A NON-STANDARD UNIT HAS BEEN APPROVED BY THE DIVISION



17 OPERATOR CERTIFICATION

I hereby certify that the information contained herein is true and complete to the best of my knowledge and belief

Signature JWP Patton
Printed Name JEFFREY W PATTON
Title DRILLING ENGINEER
Date 2-12-04

18 SURVEYOR CERTIFICATION

I hereby certify that the well location shown on this plat was plotted from field notes of actual surveys made by me or under my supervision, and that the same is true and correct to the best of my belief.

Date of Survey 2-12-04
Signature and Seal of Professional Surveyor:
DAVID A. JOHNSON
14827
Certificate Number

DISTRICT I
P.O. Box 1980, Hobbs, N.M. 88241-1980

DISTRICT II
P.O. Drawer DD, Artesia, N.M. 88211-0719

DISTRICT III
1000 Rio Brazos Rd., Aztec, N.M. 87410

DISTRICT IV
PO Box 2088, Santa Fe, NM 87504-2088

State of New Mexico
Energy, Minerals & Natural Resources Department

OIL CONSERVATION DIVISION
P.O. Box 2088
Santa Fe, NM 87504-2088

Form C-102
Revised February 21, 1994
Instructions on back
Submit to Appropriate District Office
State Lease - 4 Copies
Fee Lease - 3 Copies

☐ AMENDED REPORT

WELL LOCATION AND ACREAGE DEDICATION PLAT

¹ API Number 30-045-32234	² Pool Code 71599	³ Pool Name BASIN DAKOTA
⁴ Property Code 32286	⁵ Property Name HAYNIE	⁶ Well Number 4
⁷ GRID No. 167067	⁸ Operator Name XTO ENERGY INC.	⁹ Elevation 5820

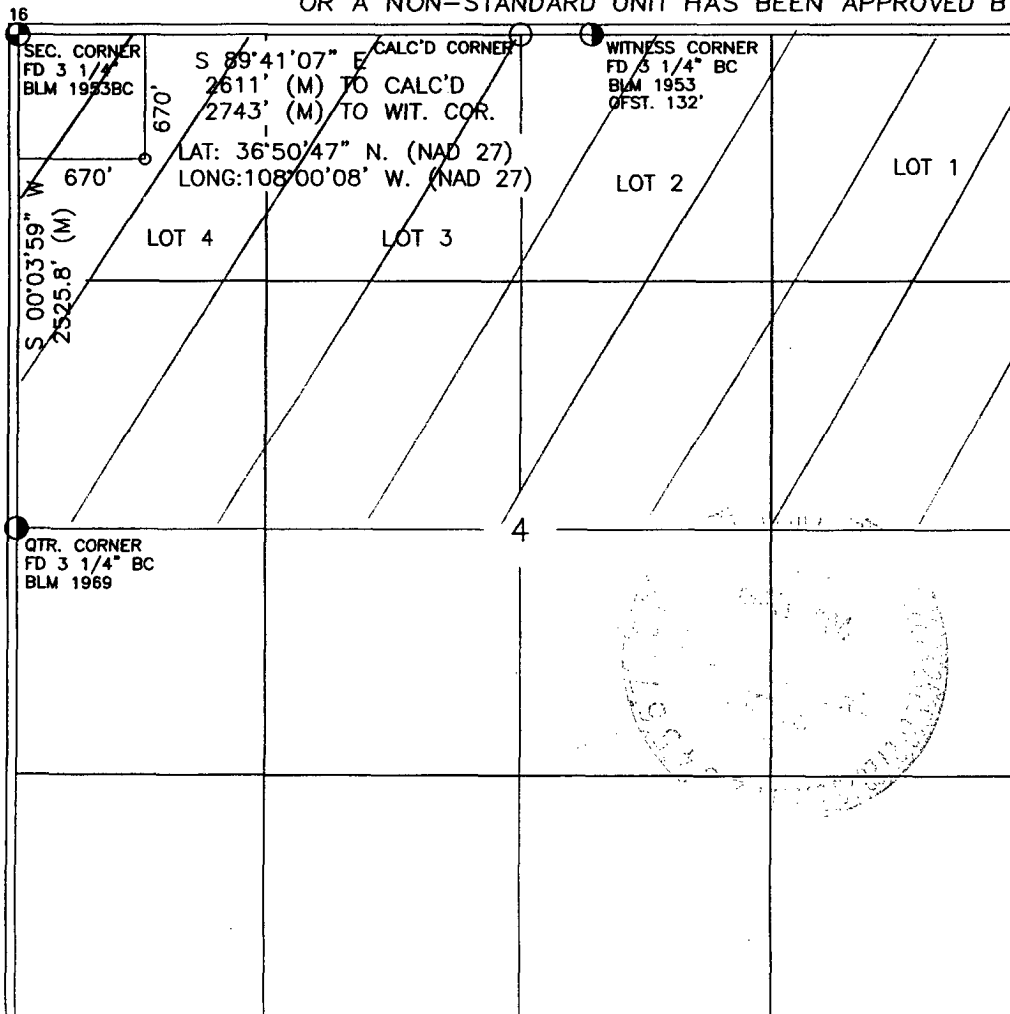
¹⁰ Surface Location

UL or lot no.	Section	Township	Range	Lot Idn	Feet from the	North/South line	Feet from the	East/West line	County
D	4	30-N	11-W		670	NORTH	670	WEST	SAN JUAN

¹¹ Bottom Hole Location If Different From Surface

UL or lot no.	Section	Township	Range	Lot Idn	Feet from the	North/South line	Feet from the	East/West line	County
¹² Dedicated Acres 319.8 315.89		¹³ Joint or Infill N/Z I		¹⁴ Consolidation Code		¹⁵ Order No.			

NO ALLOWABLE WILL BE ASSIGNED TO THIS COMPLETION UNTIL ALL INTERESTS HAVE BEEN CONSOLIDATED
OR A NON-STANDARD UNIT HAS BEEN APPROVED BY THE DIVISION



17 OPERATOR CERTIFICATION

I hereby certify that the information contained herein is true and complete to the best of my knowledge and belief

Signature

Printed Name

Title

Date

18 SURVEYOR CERTIFICATION

I hereby certify that the well location shown on this plat was plotted from field notes of actual surveys made by me or under my supervision, and that the same is true and correct to the best of my belief.

Date of Survey

Signature and Seal of Professional Surveyor:

Certificate Number

BOP SCHEMATIC FOR DRILLING OPERATIONS CLASS 1 (2M) NORMAL PRESSURE

TESTING PROCEDURE

1. Test BOP after installation:

Pressure test BOP to 200-300
psig (low pressure) for 5 min.

Test BOP to Working Press or
to 70% internal yield of surf csg
(10 min).

2. Test operation of (both) rams on every trip.

3. Check and record Accumulator pressure on every tour.

4. Re-pressure test BOP stack after changing out rams.

5. Have kelly cock valve with handle available.

6. Have safety valve and subs to fit all sizes of drill string.

