

District I
1625 N. French Dr., Hobbs, NM 88240
District II
1301 W. Grand Avenue, Artesia, NM 88210
District III
1000 Rio Brazos Road, Aztec, NM 87410
District IV
1220 S. St. Francis Dr., Santa Fe, NM 87505

State of New Mexico
Energy Minerals and Natural Resources

Form C-101
Revised June 10, 2003

Oil Conservation Division
1220 South St. Francis Dr.
Santa Fe, NM 87505

Submit to appropriate District Office
State Lease - 6 Copies
Fee Lease - 5 Copies

☐ AMENDED REPORT

APPLICATION FOR PERMIT TO DRILL, RE-ENTER, DEEPEN, PLUGBACK, OR ADD A ZONE

¹ Operator Name and Address PURE RESOURCES, LP C/o Mike Pippin, 3104 N. Sullivan Ave. Farmington, NM 87401		² OGRID Number 189071
³ Property Code 33675	⁵ Property Name RIGGS	³ API Number 30-045-32239
		⁶ Well No. 3

⁷ Surface Location

UL or lot no.	Section	Township	Range	Lot Idn	Feet from the	North/South line	Feet from the	East/West line	County
C	4	29N	12W		660'	North	1850'	West	San Juan

⁸ Proposed Bottom Hole Location If Different From Surface

UL or lot no.	Section	Township	Range	Lot Idn	Feet from the	North/South line	Feet from the	East/West line	County

⁹ Proposed Pool 1
Basin Fruitland Coal

¹⁰ Proposed Pool 2

¹¹ Work Type Code N	¹² Well Type Code G	¹³ Cable/Rotary R	¹⁴ Lease Type Code P	¹⁵ Ground Level Elevation 5715'
¹⁶ Multiple No	¹⁷ Proposed Depth 1900'	¹⁸ Formation Pictured Cliffs	¹⁹ Contractor None Yet	²⁰ Spud Date3/ May 2004

²¹ Proposed Casing and Cement Program

Hole Size	Casing Size	Casing weight/foot	Setting Depth	Sacks of Cement	Estimated TOC
8.75"	7"	20#	200'	55	Surface
6.25"	4.5"	11.6#	1900'	231	Surface

²² Describe the proposed program. If this application is to DEEPEN or PLUG BACK, give the data on the present productive zone and proposed new productive zone.

Describe the blowout prevention program, if any. Use additional sheets if necessary. Drill 8-3/4" hole to 200' using fresh water mud. Run & cement 7" surface casing to surface. WOC 12 hours. Nipple up 7-1/16" 3000# BOPE (annular). Pressure test surface casing & BOPE to minimum of 600 psig for 15 minutes. Drill 6-1/4" hole to TD using polymer and water. Log well. Run 4-1/2" production casing and cement to surface in a single stage. Move out drilling rig. Move in completion equipment. Run cased hole correlation log. Test production casing to 3800 psig for 15 minutes. Perforate select Fruitland Coal intervals and stimulate with a sand frac treatment. Install production equipment, 2-3/8" tubing, and gas sales meter. Complete as a single Fruitland Coal gas well.

²³ I hereby certify that the information given above is true and complete to the best of my knowledge and belief.

Signature:

Mike Pippin

Printed name: Mike Pippin

Title: Agent - Petr. Engr.

E-mail Address: mpippin@ddbroadband.com

Date: March 22, 2004

Phone: 505-327-4573

OIL CONSERVATION DIVISION

Approved by:

Title: DEPUTY OIL & GAS INSPECTOR, DIST. #3

Approval Date:

MAR 23 2004

Expiration Date:

MAR 23 2005

Conditions of Approval:

Attached ☐

DISTRICT I
1625 N. French Dr., Hobbs, N.M. 88240

DISTRICT II
811 South First, Artesia, N.M. 88210

DISTRICT III
1000 Rio Brazos Rd., Aztec, N.M. 87410

DISTRICT IV
2040 South Pacheco, Santa Fe, NM 87505

State of New Mexico
Energy, Minerals & Natural Resources Department

Form C-102
Revised August 15, 2000

Submit to Appropriate District Office
State Lease - 4 Copies
Fee Lease - 3 Copies

OIL CONSERVATION DIVISION
2040 South Pacheco
Santa Fe, NM 87505

☐ AMENDED REPORT

WELL LOCATION AND ACREAGE DEDICATION PLAT

*API Number 30-045-32239	*Pool Code 71629	*Pool Name BASIN FRUITLAND COAL
*Property Code 33625	*Property Name RIGGS	*Well Number 3
*OGRID No. 189071	*Operator Name PURE RESOURCES	*Elevation 5715'

¹⁰ Surface Location

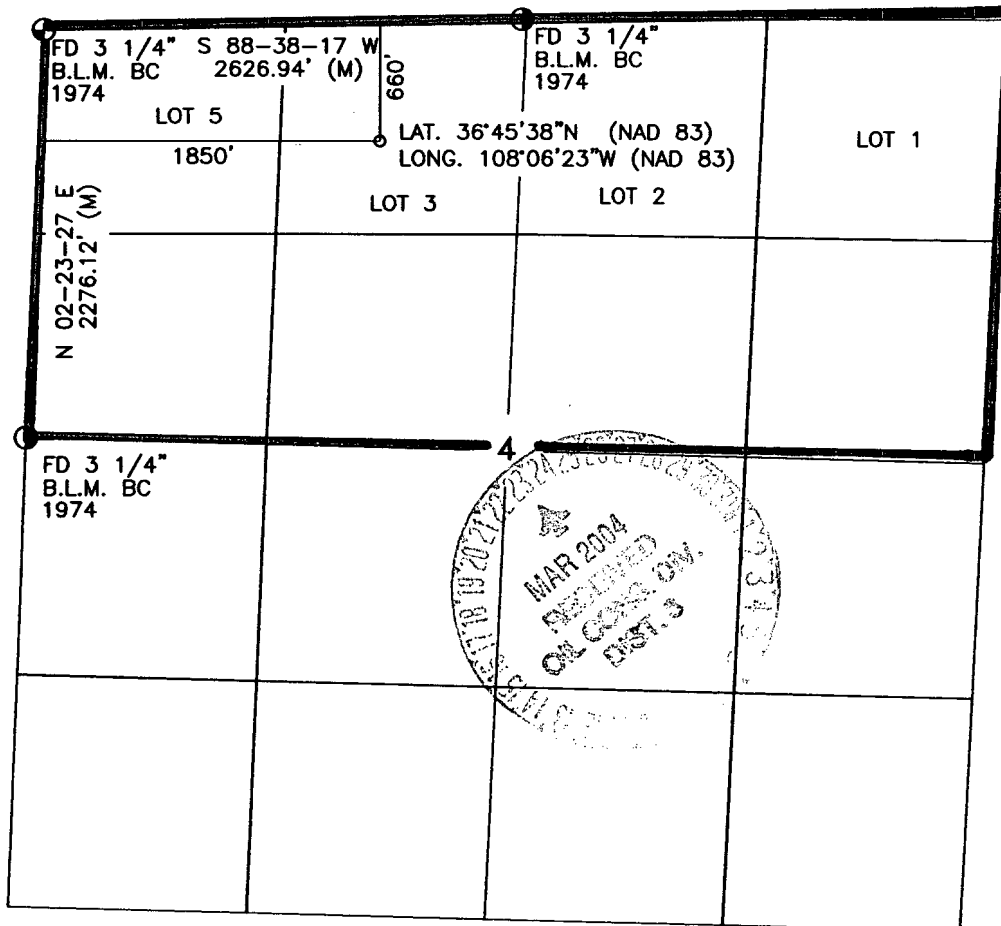
UL or lot no.	Section	Township	Range	Lot Idn	Feet from the	North/South line	Feet from the	East/West line	County
C	4	29-N	12-W		660'	NORTH	1850'	WEST	SAN JUAN

¹¹ Bottom Hole Location If Different From Surface

UL or lot no.	Section	Township	Range	Lot Idn	Feet from the	North/South line	Feet from the	East/West line	County
¹² Dedicated Acres 320.36 N/2					¹³ Joint or Infill I		¹⁴ Consolidation Code		¹⁵ Order No.

NO ALLOWABLE WILL BE ASSIGNED TO THIS COMPLETION UNTIL ALL INTERESTS HAVE BEEN CONSOLIDATED
OR A NON-STANDARD UNIT HAS BEEN APPROVED BY THE DIVISION

16



17 OPERATOR CERTIFICATION

I hereby certify that the information contained herein
is true and complete to the best of my knowledge and
belief.

Mike Pippin
Signature

MIKE PIPPIN
Printed Name

AGENT - PETR. ENGR.
Title

3/22/04
Date

18 SURVEYOR CERTIFICATION

I hereby certify that the well location shown on this plat
was plotted from field notes of actual surveys made by
me or under my supervision, and that the same is true
and correct to the best of my belief.

DAVID A. JOHNSON
Date of Survey

Signature and Seal of Professional Surveyor:
14827

REGISTERED PROFESSIONAL SURVEYOR
14827

Certificate Number