

STATE OF NEW MEXICO  
ENERGY, MINERALS AND NATURAL RESOURCES DEPARTMENT

OIL CONSERVATION DIVISION Revised 1-1-89

1000 BRAZOS RD.  
AZTEC, NM 87410

Submit 3 copies to  
Appropriate District Office

DISTRICT 1  
P O Box 1980, Hobbs, NM 88240  
DISTRICT 2  
P O Drawer DD, Artesia, NM 88210  
DISTRICT 3  
1000 Rio Brazos Rd., Aztec, NM 87410



WELL API NO. 30-039-07933

5. Indicate Type of Lease STATE FEE X

6. State Oil & Gas Lease No. E-347-21

7. Lease Name or Unit Agreement Name

ROSA UNIT

**SUNDRY NOTICES AND REPORTS ON WELLS**  
(DO NOT USE THIS FORM FOR PROPOSALS TO DRILL OR TO  
DEEPEN OR PLUG BACK TO A DIFFERENT RESERVOIR. USE  
"APPLICATION FOR PERMIT" (FORM C-101) FOR SUCH  
PROPOSALS)

1. Type of Well: OIL WELL GAS WELL X OTHER

2. Name of Operator  
WILLIAMS PRODUCTION COMPANY

3. Address of Operator  
P O BOX 3102, MS: 25-2, TULSA, OK 74101

8. Well No.  
24

9. Pool Name or Wildcat  
BASIN FRUITLAND COAL

4. Well Location  
Unit Letter M : 990 Feet From The SOUTH Line and 990 Feet From The WEST Line  
Section 32 Township 31N Range 5W NMPM RIO ARRIBA COUNTY

10. Elevation (Show whether DF, RKB, RT, GR, etc.)  
6522' KB

CHECK APPROPRIATE BOX TO INDICATE NATURE OF NOTICE, REPORT, OR OTHER DATA

NOTICE OF INTENTION TO:

SUBSEQUENT REPORT OF:

PERFORM REMEDIAL WORK  
TEMPORARILY ABANDON  
PULL OR ALTER CASING

PLUG AND ABANDON  
CHANGE PLANS  
OTHER

REMEDIAL WORK X  
COMMENCE DRILLING OPINIONS  
CASING TEST AND CEMENT JOB

ALTERING CASING  
PLUG AND ABANDONMENT  
OTHER

12. Describe Proposed or Completed Operations (Clearly state all pertinent details, and give pertinent dates, including estimated date of starting any proposed work) SEE RULE 1103.

The Rosa #24 was worked over to relieve pressure on the bradenhead between the 10-3/4" surface pipe (landed @ 174') and the 7-5/8" intermediate pipe (landed @ 3745'). Three holes were perforated at 280' and 88 sx of Type III cement were pumped away. The repair was successful and no pressure has been observed on the bradenhead.

Initially, the well was completed with a 5-1/2" longstring landed at 5885'. During the repair this casing was backed off at 3058'. Due to the age of the well, 47+ years, many of the couplings along with some of the joints of casing were damaged during removal. A recent bond log (please see attached) indicates good cement to 3860' behind the 5-1/2". The highest perforation in the productive MesaVerde zone is at 5510'. Williams production believes that the 1650' of cement provide sufficient coverage above the production zone to remove the need of rerunning a new 5-1/2" string.

WPX proposes returning the Rosa #24 to production without tying the original 5-1/2" long string back together."

Continued on Back

I hereby certify that the information above is true and complete to the best of my knowledge and belief.

SIGNATURE Tracy Ross

TITLE SR. PRODUCTION ANALYST

DATE March 9, 2004

TYPE OR PRINT NAME TRACY ROSS

TELEPHONE NO. 918/573-6254

(This space for State Use)

APPROVED BY Charles H.

DEPUTY OIL & GAS INSPECTOR, DIST. MAR 11 2004

CONDITIONS OF APPROVAL, IF ANY:

# ROSA UNIT #24 BLANCO MESAVERDE

**Location:**

990' FSL and 990' FWL  
SW/4 SW/4 Sec 32(M), T31N, R5W  
Rio Arriba, New Mexico  
Elevation: 6522' GR 6531' DF  
API # 30-039-07933

Spud Date: 12/10/56

Completed Date: 02/08/57

1st Delivery Date: 11/14/57

| Top | Depth |
|-----|-------|
|-----|-------|

|           |       |
|-----------|-------|
| Ojo Alamo | 2620' |
|-----------|-------|

|          |       |
|----------|-------|
| Kirtland | 2752' |
|----------|-------|

|           |       |
|-----------|-------|
| Fruitland | 3191' |
|-----------|-------|

|                 |       |
|-----------------|-------|
| Pictured Cliffs | 3340' |
|-----------------|-------|

|       |       |
|-------|-------|
| Lewis | 3722' |
|-------|-------|

|             |       |
|-------------|-------|
| Cliff House | 5510' |
|-------------|-------|

|         |       |
|---------|-------|
| Menefee | 5577' |
|---------|-------|

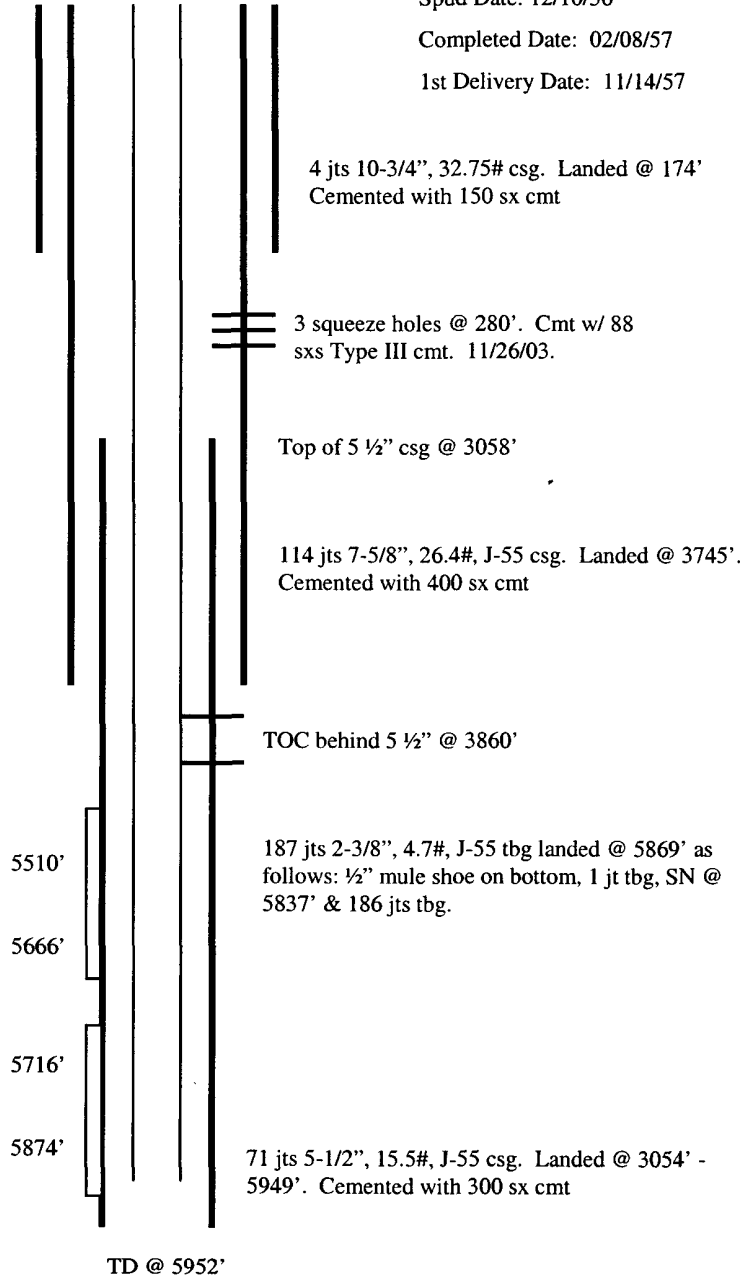
|               |       |
|---------------|-------|
| Point Lookout | 5813' |
|---------------|-------|

|        |       |
|--------|-------|
| Mancos | 5923' |
|--------|-------|

**Stimulation: 01/02/57**

Perf'd 5510'-18'; 5536'-48';  
5558'-68'; 5656'-66' w/4 jet/ft.  
Fraced w/64,428 gal water and  
37,500# sand. Flushed w/6000 gal  
water. Used 185 balls.

Perf'd 5716'-32'; 5764'-5776';  
5816'-28'; 5862'-74' w/4 jet/ft.  
Fraced w/22,890 gal water and  
7500# sand. Flushed w/2100 gal  
water.



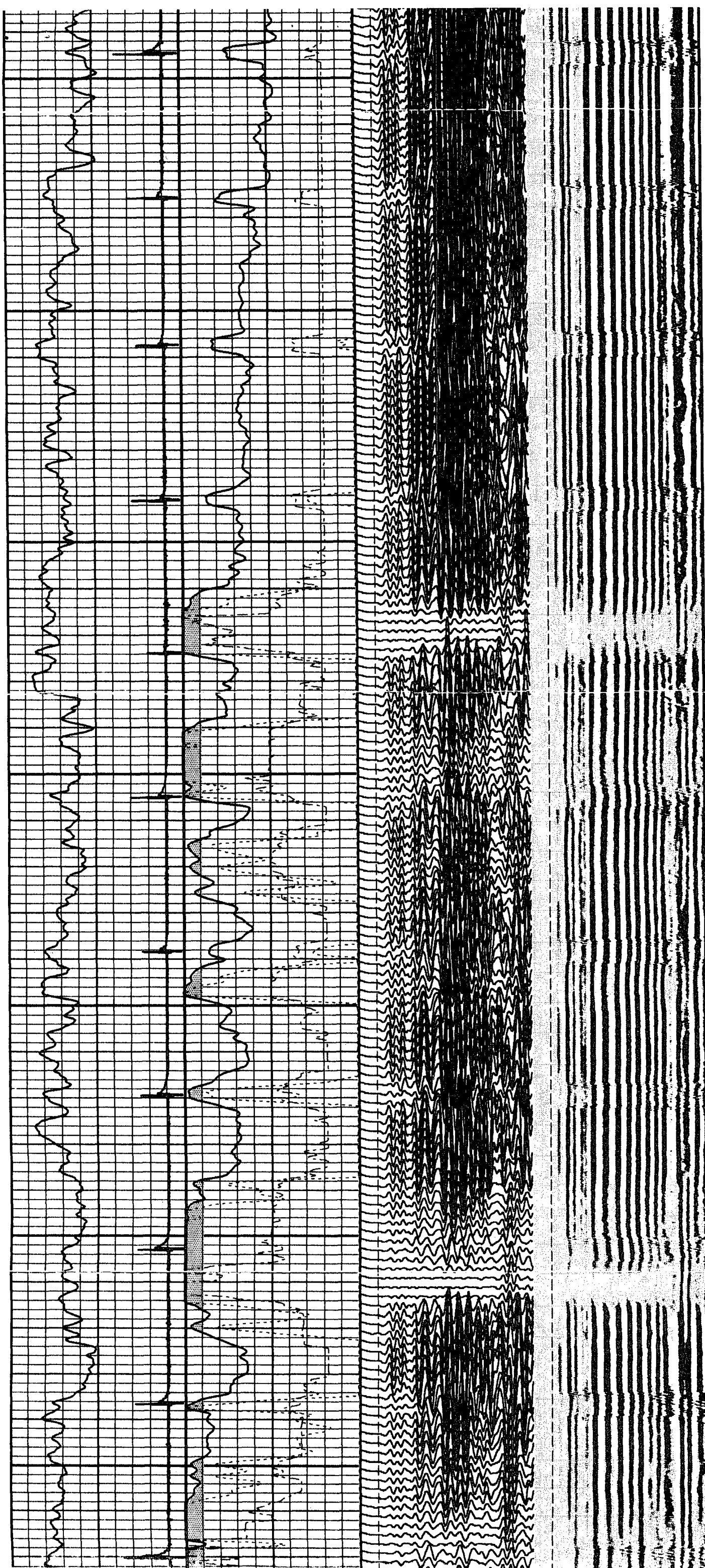
| Hole Size | Casing          | Cement | Top of Cmt |
|-----------|-----------------|--------|------------|
| 15"       | 10-3/4", 32.75# | 150 sx | Surface    |
| 9-7/8"    | 7-5/8", 26.4#   | 400 sx | 215'       |
| 6-3/4"    | 5-1/2", 15.5#   | 300 sx | 3860'      |

200

300

400

500



3700

3800

3900

4000

