

RECEIVED

2/24/78 13 PM 2:17

APR 2004
RECEIVED
OZ
CONS. DIV.
DIST. 3
PARTY LP
1 87495

"GENERAL REQUIREMENTS".

DISTRICT II
611 South First, Artesia, N.M. 88210

DISTRICT III
1000 Rio Brazos Rd., Aztec, N.M. 87410

DISTRICT IV
2040 South Pacheco, Santa Fe, NM 87505

OIL CONSERVATION DIVISION
2040 South Pacheco
Santa Fe, NM 87505

Submit to Appropriate District Office
State Lease - 4 Copies
Fee Lease - 3 Copies

☐ AMENDED REPORT

WELL LOCATION AND ACREAGE DEDICATION PLAT

1 API Number 30-039- <u>27683</u>		2 Pool Code 71599/72319		3 Pool Name Basin Dakota/Blanco Mesaverde	
4 Property Code 7454		5 Property Name SAN JUAN 27-5 UNIT			6 Well Number 102N
7 OGRID No. 14538		8 Operator Name BURLINGTON RESOURCES OIL AND GAS COMPANY LP			9 Elevation 6874'

10 Surface Location

UL or lot no.	Section	Township	Range	Lot Idn	Feet from the	North/South line	Feet from the	East/West line	County
0	12	27-N	5-W		535'	SOUTH	1780'	EAST	RIO ARRIBA

11 Bottom Hole Location If Different From Surface

UL or lot no.	Section	Township	Range	Lot Idn	Feet from the	North/South line	Feet from the	East/West line	County
12 Dedicated Acres DK S/320 MV E/320					13 Joint or Infill		14 Consolidation Code		15 Order No.

NO ALLOWABLE WILL BE ASSIGNED TO THIS COMPLETION UNTIL ALL INTERESTS HAVE BEEN CONSOLIDATED
OR A NON-STANDARD UNIT HAS BEEN APPROVED BY THE DIVISION

<p>16</p> <p>RECEIVED</p> <p>2004 APR 18 PM 2:17</p> <p>070 Featherston, NM</p> <p>12</p> <p>USA SF-079491</p> <p>LAT: 36°34.9136' N. LONG: 107°18.3578' W. NAD 1927</p> <p>535'</p> <p>N 84-59-10 W 2660.78'</p> <p>1780'</p> <p>N 00-10-48 W 2782.65'</p>	<p>17 OPERATOR CERTIFICATION</p> <p>I hereby certify that the information contained herein is true and complete to the best of my knowledge and belief</p> <p><u>Nancy Oltmanns</u> Signature Nancy Oltmanns Printed Name Senior Staff Specialist Title <u>2-23-04</u> Date</p>
	<p>18 SURVEYOR CERTIFICATION</p> <p>I hereby certify that the well location shown on this plat was plotted from field notes of actual surveys made by me or under my supervision, and that the same is true and correct to the best of my belief.</p> <p>Date of Survey <u>12-8-03</u></p> <p>Signature and Seal of Professional Surveyor: <u>Glen W Russell</u> Certificate Number 15703</p>

OPERATIONS PLAN

Well Name: San Juan 27-5 Unit #102N
Location: 535' FSL, 1780' FEL, Sec 12, T-27-N, R-5-W
Rio Arriba County, NM
Latitude 36° 34.9136, Longitude 107° 18.3578
Formation: Blanco Mesaverde/Basin Dakota

Total Depth: 8166'

Logging Program: See San Juan 27-5 Unit Master Operations Plan

Mud Program: See San Juan 27-5 Unit Master Operations Plan

Casing Program (as listed, the equivalent, or better):

Hole Size	Depth Interval	Csg. Size	Wt.	Grade	Cement
12 1/4"	0' - 120'	9 5/8"	32.3#	H-40	113 cu.ft.
8 3/4"	0' - 3921'	7"	20.0#	J-55	888 cu.ft.
6 1/4"	0' - 7800'	4 1/2"	10.5#	J-55	578 cu.ft.
6 1/4"	7800' - 8166'	4 1/2"	11.6#	N-80	

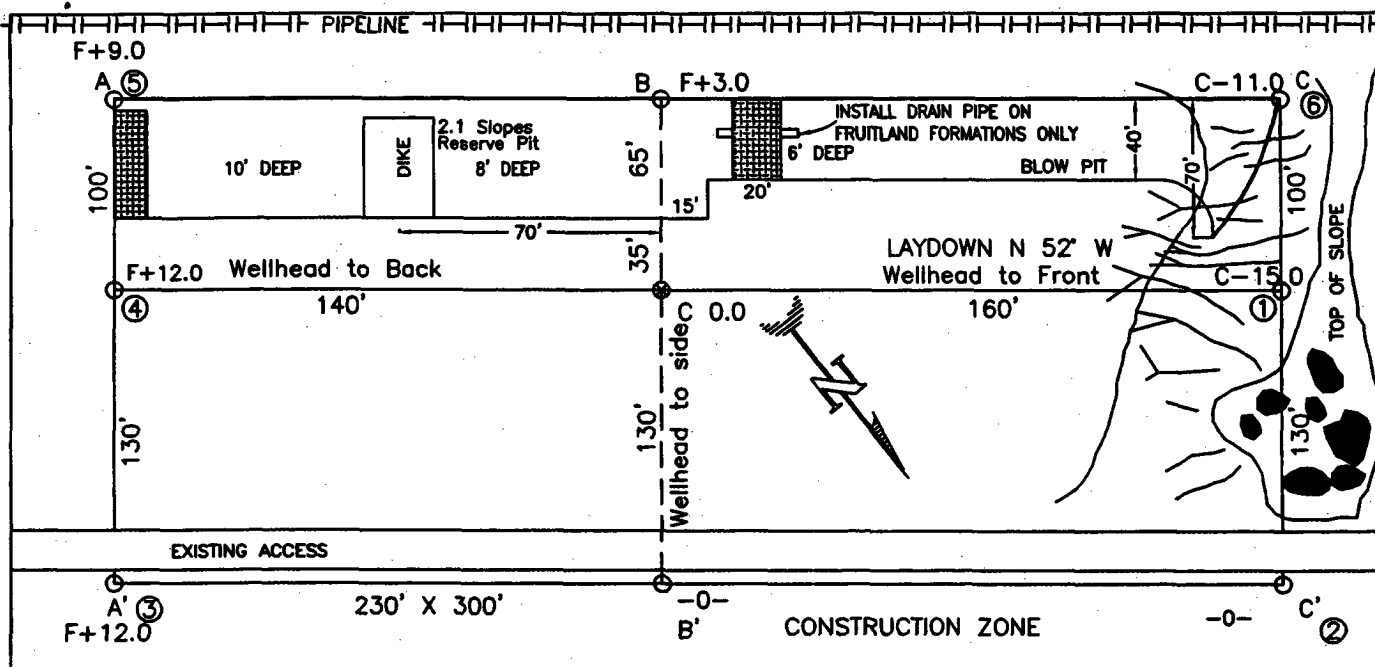
Tubing Program: See San Juan 27-5 Unit Master Operations Plan

- The Mesaverde and Dakota formations will be completed and commingled.
- The east half of Section 12 is dedicated to the Mesaverde and the south half of Section 12 is dedicated to the Dakota formations in this well.
- Gas is dedicated.

Sean Corrigan
Drilling Engineer

February 23, 2004
Date

BURLINGTON RESOURCES OIL & GAS COMPANY LP
SAN JUAN 27-5 UNIT #102N, 535' FSL & 1780' FEL
SECTION 12, T-27-N, R-5-W, NMPM, RIO ARriba COUNTY, NM
GROUND ELEVATION: 6874', DATE: NOVEMBER 18, 2003

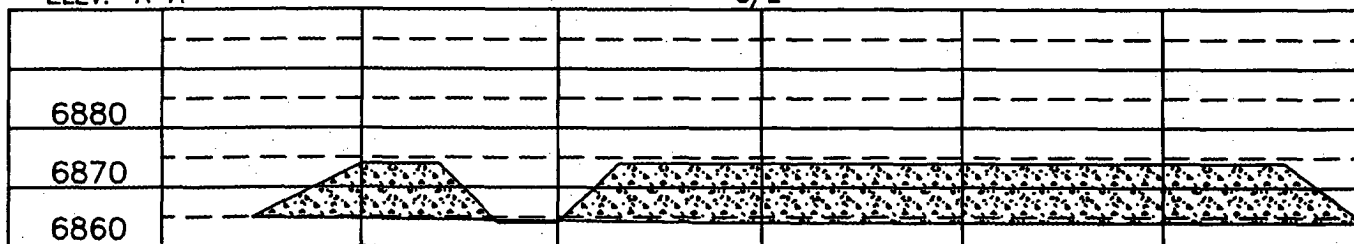


(330' X 400') = 3.03 ACRES

RESERVE PIT DIKE: TO BE 8' ABOVE DEEP SIDE (OVERFLOW - 3' WIDE AND 1' ABOVE SHALLOW SIDE).
 BLOW PIT: OVERFLOW PIPE HALFWAY BETWEEN TOP AND BOTTOM AND TO EXTEND OVER PLASTIC LINER AND INTO BLOW PIT.

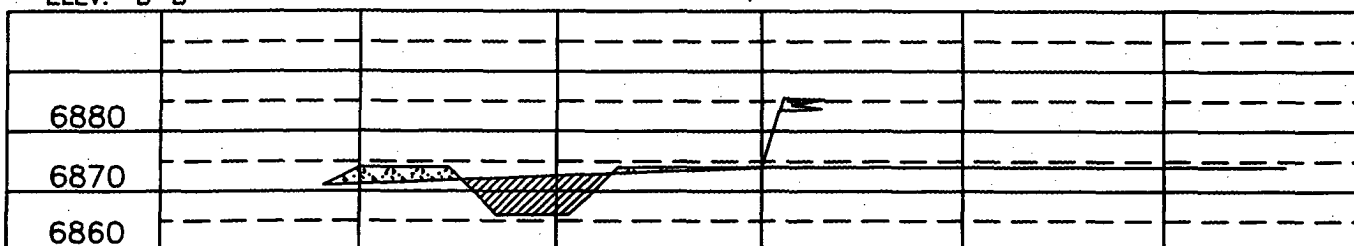
ELEV. A-A'

C/L

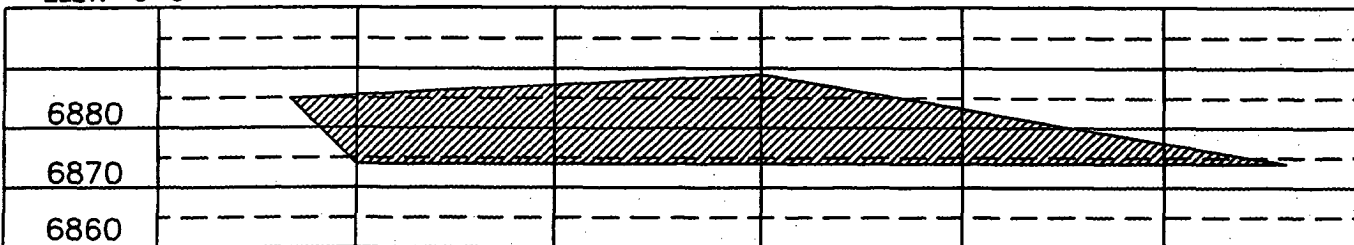


ELEV. B-B'

C/L



ELEV. C-C'



NOTE: VECTOR SURVEYS IS NOT LIABLE FOR UNDERGROUND UTILITIES OR PIPELINES.
 CONTRACTOR SHOULD CALL ONE-CALL FOR LOCATION OF ANY MARKED OR UNMARKED BURIED PIPELINES OR CABLES
 ON WELL PAD AND OR ACCESS ROAD AT LEAST TWO (2) WORKING DAYS PRIOR TO CONSTRUCTION.