

Submit 3 Copies To Appropriate District Office
District I
1625 N. French Dr., Hobbs, NM 88240
District II
811 South First, Artesia, NM 88210
District III
1000 Rio Brazos Rd., Aztec, NM 87410
District IV
1220 S. St. Francis Dr., Santa Fe, NM 87505

State of New Mexico
Energy, Minerals and Natural Resources

Form C-103
Revised March 25, 1999

OIL CONSERVATION DIVISION
1220 South St. Francis Dr.
Santa Fe, NM 87505

WELL API NO. 30-045-25232
5. Indicate Type of Lease STATE FEE
6. State Oil & Gas Lease No.

SUNDRY NOTICES AND REPORTS ON WELLS
(DO NOT USE THIS FORM FOR PROPOSALS TO DRILL OR TO DEEPEN OR PLUG BACK TO A DIFFERENT RESERVOIR. USE "APPLICATION FOR PERMIT" (FORM C-101) FOR SUCH PROPOSALS.)

1. Type of Well:
Oil Well ☐ Gas Well ☒ Other

2. Name of Operator
BP America Production Company Attn: Mary Corley

3. Address of Operator
P.O. Box 3092 Houston, TX 77253

4. Well Location

Unit Letter **C** **790** feet from the **North** line and **1710** feet from the **West** line

Section **25** Township **28N** Range **09W** NMPM **San Juan** County

10. Elevation (Show whether DR, RKB, RT, GR, etc.)
6031' GR

7. Lease Name or Unit Agreement Name:

Warren A LS
(also filed on BLM Form 3160-5
SF-07712)

8. Well No.

1A

9. Pool name or Wildcat
Blanco Mesaverde & Otero Chacra

11. Check Appropriate Box to Indicate Nature of Notice, Report or Other Data

NOTICE OF INTENTION TO:

PERFORM REMEDIAL WORK ☐ PLUG AND ABANDON ☐

TEMPORARILY ABANDON ☐ CHANGE PLANS ☐

PULL OR ALTER CASING ☐ MULTIPLE COMPLETION ☐

OTHER: **Downhole Commingle** ☒

SUBSEQUENT REPORT OF:

REMEDIAL WORK ☐ ALTERING CASING ☐

COMMENCE DRILLING OPNS. ☐ PLUG AND ABANDONMENT ☐

CASING TEST AND CEMENT JOB ☐

OTHER: ☐

12. Describe proposed or completed operations. (Clearly state all pertinent details, and give pertinent dates, including estimated date of starting any proposed work). SEE RULE 1103. For Multiple Completions: Attach wellbore diagram of proposed completion or recompletion.

On 11/21/2002, BP America Production Company submitted a request for permission complete the subject well into the Pictured Cliffs Pool and commingle production downhole from the Blanco Mesaverde & Blanco Pictured Cliffs Pools.

BP respectfully request to amend application from a completion into the Pictured Cliffs to a completion into the Otero Chacra as per the attached procedure. The Blanco Mesaverde (72319) and Otero Chacra (82329) Pools are Pre-Approved for Downhole Commingling per NMOCD Order R-11363. The working, overriding, and royalty interest in the proposed commingled pools are identical, therefore, no notification of this application needs to be submitted.

Production is proposed to be allocated on a fixed percentage. Prior to drilling out the CIBP a stabilized deliverability test will be conducted on the Chacra then a deliverability test will be performed on the combined zones and the Chacra rate will be subtracted from the total well stream to establish the Mesaverde rate.

Commingling Production Downhole in the subject well from the proposed Pools with not reduce the value of the total remaining production.

I hereby certify that the information above is true and complete to the best of my knowledge and belief.

SIGNATURE Mary Corley TITLE **Sr. Regulatory Analyst** DATE **03-21-2003**

Type or print name **Mary Corley** Telephone No. **281-366-4491**

(This space for State use)

APPROVED BY [Signature] TITLE **DEPUTY OIL & GAS INSPECTOR, DIST. #1** DATE **MAR 24 2003**

Conditions of approval, if any:

District I

1625 N. French Dr., Hobbs, NM 88240

District II

811 South First, Artesia, NM 88210

District III

1000 Rio Brazos Rd., Aztec, NM 87410

District IV

2040 South Pacheco, Santa Fe, NM 87505

State of New Mexico
Energy, Minerals & Natural Resources Department**OIL CONSERVATION DIVISION**
2040 South Pacheco
Santa Fe, NM 87505Form C-102
Revised August 15, 2000Submit to Appropriate District Office
State Lease - 4 Copies
Fee Lease - 3 Copies

AMENDED REPORT

WELL LOCATION AND ACREAGE DEDICATION PLAT

¹ API Number 30-045-25232	² Pool Code 82329	³ Pool Name Otero Chacra
⁴ Property Code 001210	⁵ Property Name Warren A LS	⁶ Well Number 1A
⁷ OGRID No. 000778	⁸ Operator Name BP America Production Company	⁹ Elevation 6031' GR

¹⁰ Surface Location

UL or lot no. Unit C	Section 25	Township 28N	Range 09W	Lot Idn	Feet from 790'	North/South North	Feet from 1710'	East/West West	County San Juan
--------------------------------	----------------------	------------------------	---------------------	---------	--------------------------	-----------------------------	---------------------------	--------------------------	---------------------------

¹¹ Bottom Hole Location If Different From Surface

UL or lot no.	Section	Township	Range	Lot Idn	Feet from	North/South	Feet	East/West	County
¹² Dedicated Acres 160	¹³ Joint or Infill	¹⁴ Consolidation Code				¹⁵ Order No.			

NO ALLOWABLE WILL BE ASSIGNED TO THIS COMPLETION UNTIL ALL INTERESTS HAVE BEEN CONSOLIDATED OR A
NON-STANDARD UNIT HAS BEEN APPROVED BY THE DIVISION

				¹⁷ OPERATOR CERTIFICATION I hereby certify that the information contained herein is true and complete to the best of my knowledge and belief. <i>Mary Corley</i> Signature Mary Corley Printed Name Sr. Regulatory Analyst Title 03/21/2003 Date
				¹⁸ SURVEYOR CERTIFICATION I hereby certify that the well location shown on this plat was plotted from field notes of actual surveys made by me or under my supervision, and that the same is true and correct to the best of my belief. 10/16/1981 Date of Survey Signature and Seal of Professional Surveyor: Fred B Kerr 3950 Certificate Number

Warren A LS #1A Workover Procedure

Procedure:

1. Check anchors. MIRU workover rig.
2. Check and record tubing, casing, and bradenhead pressures.
3. Blow down well. Kill with 2% KCL water ONLY if necessary.
4. Nipple down WH. NU BOPs.
5. Tag for fill and tally OH with 2-3/8" production tubing currently set at 4935'.
6. TIH with bit and scraper for 4-1/2" casing. Work scraper across Point Lookout perforations at 4468' – 4962'. TOH.
7. RU WL unit. RIH with 4-1/2" CIBP. Set CIBP at 4425'.
8. Load well with 2% KCL water. Pressure test casing to 1500 psi with rig pumps.
9. RIH with CBL log. Run CBL log across Mesaverde and Chacra interval from 3000' – 4425'.
10. RIH with 3-1/8" casing guns. Perforate Menefee formation (correlate to GR log).

Menefee perforations, 2 spf (shots/ holes):
- to be determined

11. RU frac equipment and install wellhead isolation tool. Use 2% KCL/N2 foam in fracture stimulation.
12. Spearhead 500 gal 15% HCL, establish injection rate, and proceed with fracture stimulation according to Schlumberger schedule.
13. Immediately after frac job, RU WL unit and lubricator.
14. RIH and set 4-1/2" CIBP at 3500'.
15. RIH with 3-1/8" casing guns. Perforate Chacra formation (correlate to GR log).

Chacra perforations, 2 spf (shots/ holes):
- to be determined

16. RU frac equipment and install wellhead isolation tool. Use 2% KCL/N2 foam in fracture stimulation.

17. Spearhead 500 gal 15% HCL, establish injection rate, and proceed with fracture stimulation according to Schlumberger schedule.
18. Flowback frac immediately. Obtained stabilized flowrate using choke flow correlation to be used in production allocation.
19. TIH with tubing and bit. Cleanout fill and drill bridge plugs set at 3500' and 4425'. Cleanout fill to PBTD at 4999'. Blow well dry at PBTD.
20. Flow well and obtain stabilized flowrate using choke flow correlation to be used in production allocation.
21. Rabbit tubing and RIH with 2-3/8" production tubing.
22. Land 2-3/8" production tubing at 4925'.
23. ND BOP's. NU WH. Return well to production and downhole commingle Chacra and Mesaverde production.

Warren ALS 1 A

Sec 25, T28N, R9W

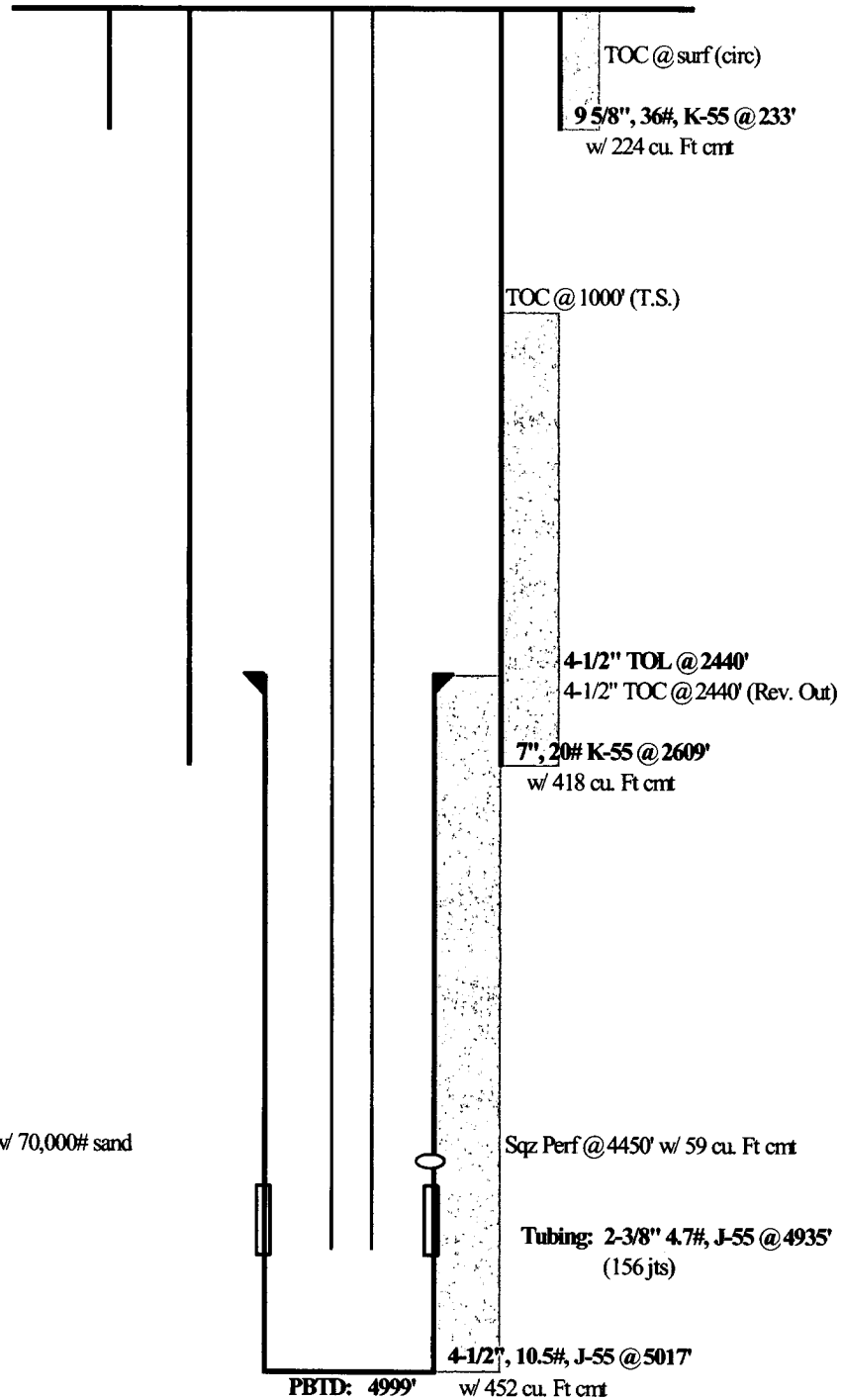
API #: 3004525232

History:

-Spud on 11/14/81

MV perforations

4468 - 4962', w/ 1SPZ, frac'd w/ 70,000# sand



TD: 5017'

updated: 10/23/02 rmp