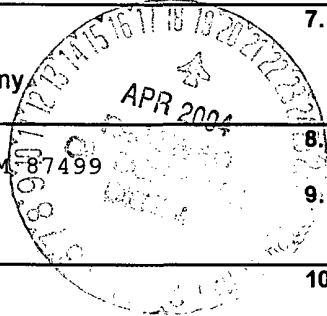


UNITED STATES
DEPARTMENT OF THE INTERIOR
BUREAU OF LAND MANAGEMENT

RECEIVED

APPLICATION FOR PERMIT TO DRILL, DEEPEN, OR PLUG BACK

1a. Type of Work DRILL	5. Lease Number SF-079148 Unit Reporting Number 070 Farmington, NM	
1b. Type of Well GAS	6. If Indian, All. or Tribe	
2. Operator BURLINGTON RESOURCES Oil & Gas Company	7. Unit Agreement Name San Juan 32-9 Unit	
3. Address & Phone No. of Operator PO Box 4289, Farmington, NM 87499 (505) 326-9700	8. Farm or Lease Name San Juan 32-9 Unit 9. Well Number #282S	
4. Location of Well 1140' FSL, 1010' FEL Latitude 36° 56.2212 , Longitude 107° 46.7387	10. Field, Pool, Wildcat Basin Fruitland Coal 11. Sec., Twn, Rge, Mer. (NMPM) Sec. 33, T32N, R9W API # 30-045- <u>32253</u>	
14. Distance in Miles from Nearest Town 17 miles to intersection of Hwy 550 & Hwy 173 in Aztec	12. County San Juan	13. State NM
15. Distance from Proposed Location to Nearest Property or Lease Line 1010'	17 Acres Assigned to Well E/2 318.19	
16. Acres in Lease	18. Distance from Proposed Location to Nearest Well, Drlg, Compl, or Applied for on this Lease 1850'	
18. Distance from Proposed Location to Nearest Well, Drlg, Compl, or Applied for on this Lease 1850'	19. Proposed Depth 3567'	
19. Proposed Depth 3567'	20. Rotary or Cable Tools Rotary	
21. Elevations (DF, FT, GR, Etc.) 6632'	22. Approx. Date Work will Start	
23. Proposed Casing and Cementing Program See Operations Plan attached	24. Authorized by: <u>Joni Clark</u> Regulatory/Compliance Specialist Date <u>3-18-04.</u>	



Handwritten mark

PERMIT NO. _____ APPROVAL DATE _____
APPROVED BY DM TITLE _____ DATE 4-14-04

Archaeological Report to be submitted
Threatened and Endangered Species Report to be submitted

NOTE: This format is issued in lieu of U.S. BLM Form 3160-3
Title 18 U.S.C. Section 1001, makes it a crime for any person knowingly and willfully to make to any department or agency of the United States any false, fictitious or fraudulent statements or presentations as to any matter within its jurisdiction.

See attached Conditions of Approval

This action is subject to technical and procedural review pursuant to 43 CFR 3165.3 and appeal pursuant to 43 CFR 3165.4

NMOCGD

DRILLING OPERATIONS AUTHORIZED ARE SUBJECT TO COMPLIANCE WITH ATTACHED "GENERAL REQUIREMENTS".

Handwritten checkmark

DISTRICT II
611 South First, Artesia, N.M. 88210

Submit to Appropriate District Office
State Lease - 4 Copies
Fee Lease - 3 Copies

DISTRICT III
1000 Rio Brazos Rd., Artec, N.M. 87410

OIL CONSERVATION DIVISION
2040 South Pacheco
Santa Fe, NM 87505

DISTRICT IV
2040 South Pacheco, Santa Fe, NM 87506

AMENDED REPORT

WELL LOCATION AND ACREAGE DEDICATION PLAT

¹ API Number 30-039-32253		² Pool Code 71629	³ Pool Name Basin Fruitland Coal
⁴ Property Code 7473	⁵ Property Name SAN JUAN 32-9 UNIT		⁶ Well Number 2825
⁷ OGRID No. 14538	⁸ Operator Name BURLINGTON RESOURCES OIL AND GAS COMPANY LP		⁹ Elevation 6632'



¹⁰ Surface Location

UL or lot no.	Section	Township	Range	Lot Idn	Feet from the	North/South line	Feet from the	East/West line	County
P	33	32-N	9-W		1140'	SOUTH	1010'	EAST	SAN JUAN

¹¹ Bottom Hole Location If Different From Surface

UL or lot no.	Section	Township	Range	Lot Idn	Feet from the	North/South line	Feet from the	East/West line	County
¹² Dedicated Acres FTC E/2 318.19			¹³ Joint or Infill		¹⁴ Consolidation Code		¹⁵ Order No.		

NO ALLOWABLE WILL BE ASSIGNED TO THIS COMPLETION UNTIL ALL INTERESTS HAVE BEEN CONSOLIDATED OR A NON-STANDARD UNIT HAS BEEN APPROVED BY THE DIVISION

16				17 OPERATOR CERTIFICATION			
LOT 4	LOT 3	LOT 2	LOT 1	I hereby certify that the information contained herein is true and complete to the best of my knowledge and belief.			
LOT 5	LOT 6	LOT 7	LOT 8	 Signature Joni Clark Printed Name Regulatory Specialist Title Date 1-30-04.			
APR 2004		33		18 SURVEYOR CERTIFICATION			
		M L BLANCETT, ET AL		I hereby certify that the well location shown on this plat was plotted from field notes of actual surveys made by me or under my supervision, and that the same is true and correct to the best of my belief.			
		SF-079048		Date of Survey 10-7-03  Signature GLEN W. RUSSELL NEW MEXICO LICENSED PROFESSIONAL SURVEYOR 15703 Certificate Number 15703			
		LOT 9					
		SF-079148					
		LOT 10					
		LOT 11					
		N 89-11-04 W 2614.84'					

RECEIVED

OPERATIONS PLAN

Well Name: San Juan 32-9 Unit #282S
Location: 1140' FSL, 1010' FEL Section 33, T-32-N, R-09-W
Latitude 36° 56.2212'N, Longitude 107° 46.7387'W
San Juan County, NM
Formation: Basin Fruitland Coal
Elevation: 6632'GR

Formation:	Top	Bottom	Contents
Surface	San Jose	1854'	
Ojo Alamo	1854'	1979'	aquifer
Kirtland	1979'	3102'	
Fruitland Coal	3102'	3482'	gas
Intermediate TD	3160'		
B/Basal Coal	3482'	3484'	gas
Pictured Cliffs	3484'		
Total Depth	3567'		

Logging Program: none
Mudlog: from 7" to 3567'
Coring Program: none

Mud Program:

Interval	Type	Weight	Vis.	Fluid Loss
0- 120'	Spud Mud/Air/Air Mist	8.4-9.0	40-50	no control
120-3160'	Non-dispersed	8.4-9.0	30-60	no control
3160-3567'	Air/Mist			

Casing Program (as listed, the equivalent, or better):

Hole Size	Depth Interval	Csg. Size	Wt.	Grade
12 1/4"	0' - 120'	9 5/8"	32.3#	H-40
8 3/4"	0' - 3160'	7"	20.0#	J-55
6 1/4"	3160' - 3567'	open hole		

Alternate Casing Program (as listed, the equivalent, or better):

Hole Size	Depth Interval	Csg. Size	Wt.	Grade
12 1/4"	0' - 120'	9 5/8"	32.3#	H-40
8 3/4"	0' - 3160'	7"	20.0#	J-55
6 1/4"	3120' - 3567'	5 1/2"	15.5#	J-55

Tubing Program:

0' - 3567' 2 3/8" 4.7# J-55

Float Equipment: 9 5/8" surface casing - saw tooth guide shoe. Centralizers will be run in accordance with Onshore Order #2.

7" intermediate casing - guide shoe and self-fill float collar. Standard centralizers run every other joint above shoe. Two turbolizing type centralizers - one below and one into the base of the Ojo Alamo @ 1979'. Standard centralizers thereafter every fourth joint up to the base of the surface pipe.

Wellhead Equipment: 9 5/8" x 7" x 2 3/8" x 11" 2000 psi xmas tree assembly.

Cementing:

9 5/8" surface casing -
Pre-Set Drilled Cement with 27 sx Type I, II cement with 20% flyash mixed at 14.5 ppg, 1.61 cu ft per sack yield. ~~4338~~ cu ft of slurry, bring cement to surface through 3/4" line). Wait on cement for 24 hours for pre-set holes before pressure testing or drilling out from under surface.

Conventionally Drilled
Cement with 88 sx Type III cement with 0.25 pps Celloflake, 3% CaCl. (113 cu ft of slurry, 200% excess, bring cement to surface) Wait on cement for 8 hrs for conventionally set holes before pressure testing or drilling out from under surface.

WOC until cement establishes 250 psi compressive strength prior to NU of BOPE.

7" intermediate casing - lead w/276 sacks Premium Lite with 3% calcium chloride, 5 pps LCM-1, and 1/4#/sack flocele, 0.4% FL-52, & 0.4% SMS. Tail with 90 sacks Type III cmt with 1% calcium chloride, 1/4#/sack flocele and 0.2% FL-52 (712 cu.ft., 50% excess to circulate to surface).

5 1/2" liner - will not be cemented if run.

Note: If open hole logs are run, cement volumes will be based on 25% excess over caliper volumes.

BOP and tests:

Surface to intermediate TD - 11" 2000 psi (minimum) double gate BOP stack (Reference Figure #1). Prior to drilling out surface casing, test rams to 600#/30 min.

Intermediate TD to Total Depth - 7 1/6" 2000 psi (minimum) double gate BOP stack (Reference Figure #2). Prior to drilling out intermediate casing, test blind rams and casing to 1500 psi for 30 minutes; all pipe rams and casing to 1500 psi for 30 minutes each.

From surface to ^{7"}TD - choke manifold (Reference Figure #3).

Pipe rams will be actuated at least once each day and blind rams actuated once each trip to test proper functioning. An upper kelly cock valve with handle and drill string safety valves to fit each drill string will be maintained and available on the rig floor.

Additional information:

- * The Fruitland Coal formation will be completed.
- * Anticipated pore pressure for the Fruitland is less than 500 psi.
- * This gas is dedicated.
- * The east half of Section 33 is dedicated to the Fruitland Coal.

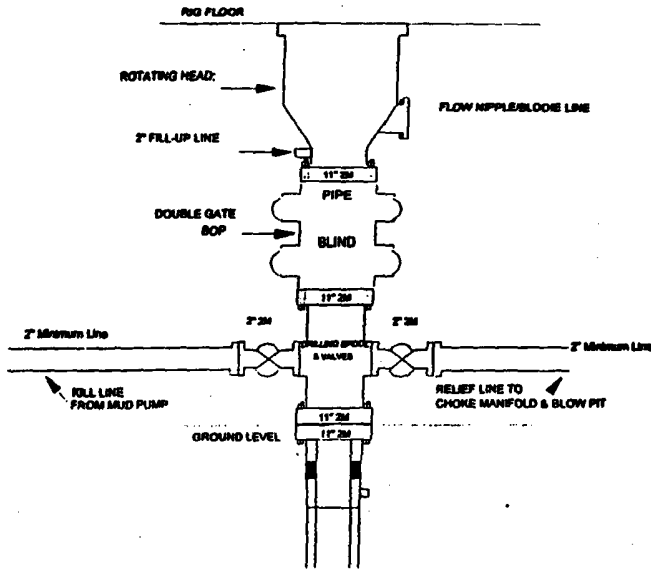
Date: March 19, 2004

Drilling Engineer: Jim McElroy

BURLINGTON RESOURCES

Burlington Resources

Drilling Rig
2000 psi System

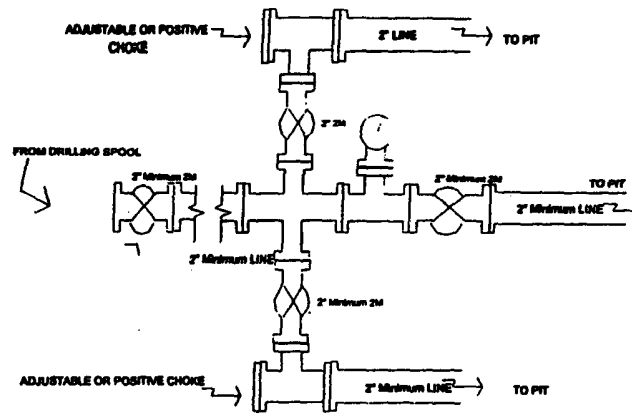


BOP Installation from Surface Casing Point to Total Depth. 11\"/>

Figure #1

4-20-01

Drilling Rig
Choke Manifold Configuration
2000 psi System



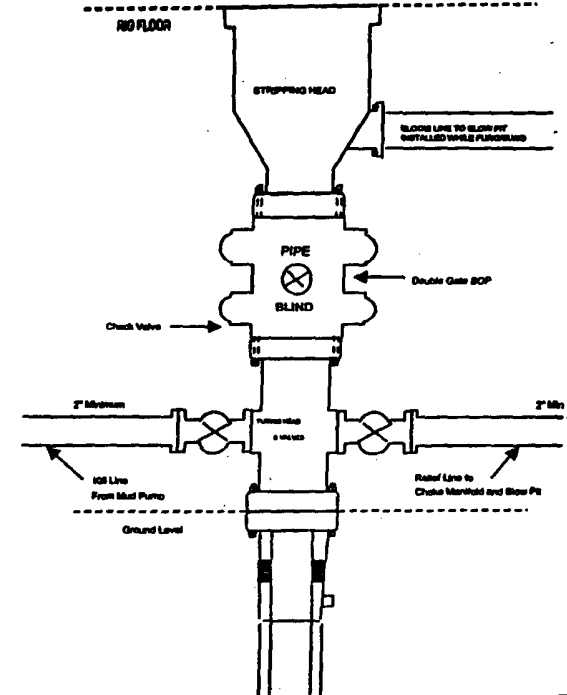
Choke manifold installation from Surface Casing Point to Total Depth. 2,000psi working pressure equipment with two chokes.

Figure #3

4-20-01

BURLINGTON RESOURCES

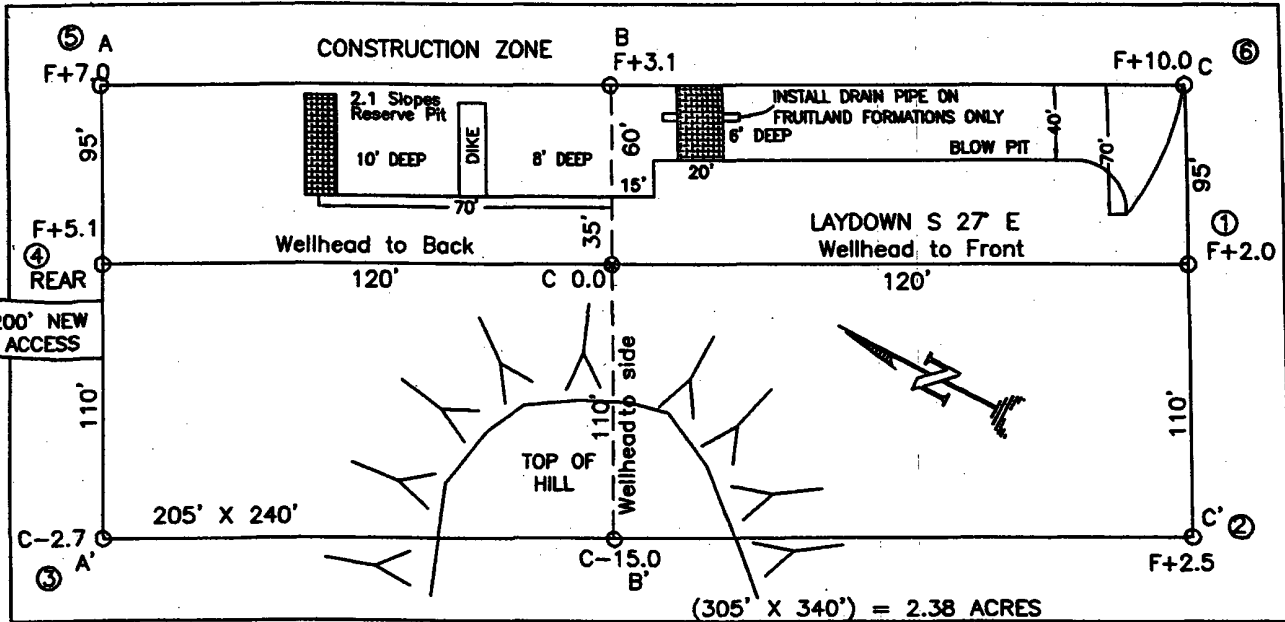
Completion/Workover Rig
BOP Configuration
2,000 psi System



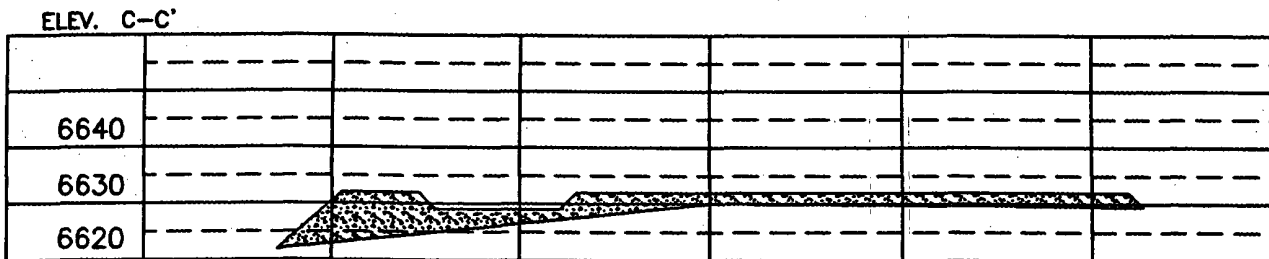
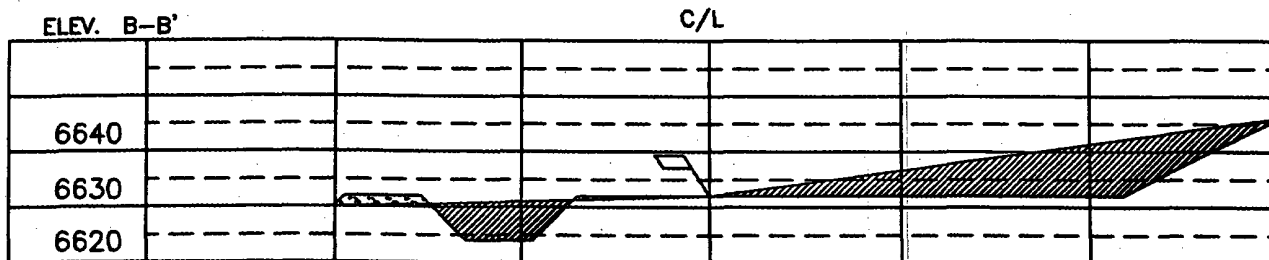
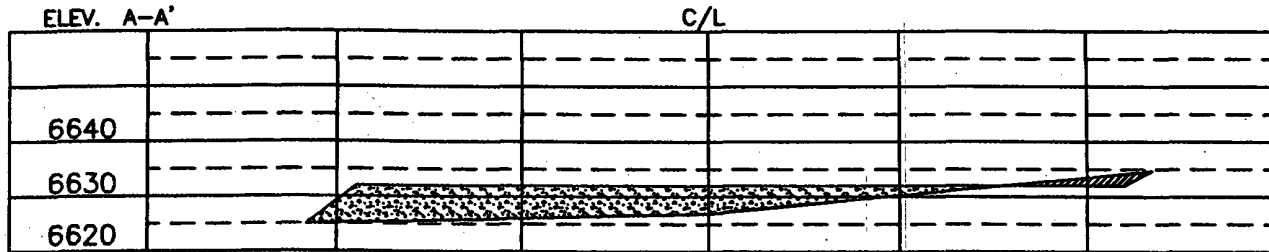
Minimum BOP installation for all Completion/Workover Operations. 7-1/16\"/>

Figure #2

SAN JUAN 32-9 UNIT #282S, 1140' FSL 1010' FEL
 SECTION 33, T-32-N, R-9-W, N.M.P.M., SAN JUAN COUNTY, NEW MEXICO
 GROUND ELEVATION: 6632', DATE: SEPTEMBER 16, 2003



RESERVE PIT DIKE: TO BE 8' ABOVE DEEP SIDE (OVERFLOW - 3' WIDE AND 1' ABOVE SHALLOW SIDE).
 BLOW PIT: OVERFLOW PIPE HALFWAY BETWEEN TOP AND BOTTOM AND TO EXTEND OVER PLASTIC LINER AND INTO BLOW PIT.



NOTE: VECTOR SURVEYS IS NOT LIABLE FOR UNDERGROUND UTILITIES OR PIPELINES.
 CONTRACTOR SHOULD CALL ONE-CALL FOR LOCATION OF ANY MARKED OR UNMARKED BURIED PIPELINES OR CABLES
 ON WELL PAD AND OR ACCESS ROAD AT LEAST TWO (2) WORKING DAYS PRIOR TO CONSTRUCTION.