

UNITED STATES
DEPARTMENT OF THE INTERIOR
BUREAU OF LAND MANAGEMENT

APPLICATION FOR PERMIT TO DRILL, DEEPEN, OR PLUG BACK

1a. Type of Work DRILL	5. Lease Number NMSP-079002 NMNM03403 Unit Reporting Number 070 Farmington, NM
1b. Type of Well GAS	6. If Indian, All. or Tribe
2. Operator BURLINGTON RESOURCES OIL & GAS COMPANY LP	7. Unit Agreement Name San Juan 30-6 Unit
3. Address & Phone No. of Operator PO Box 4289, Farmington, NM 87499 (505) 326-9700	8. Farm or Lease Name San Juan 30-6 Unit 9. Well Number 451S
4. Location of Well 1560' FSL, 1815' FEL Latitude 36° 49.27, Longitude 107° 30.03	10. Field, Pool, Wildcat Basin Fruitland Coal 11. Sec., Twn, Rge, Mer. (NMPM) J Sec. 7, T-30-N, R-6-W API # 30-039- 27656
14. Distance in Miles from Nearest Town 15 miles from Navajo City	12. County Rio Arriba 13. State NM
15. Distance from Proposed Location to Nearest Property or Lease Line 1560'	17. Acres Assigned to Well 320 E/2
16. Acres in Lease	
18. Distance from Proposed Location to Nearest Well, Drig, Compl, or Applied for on this Lease 20'	
19. Proposed Depth 3357'	20. Rotary or Cable Tools Rotary
21. Elevations (DF, FT, GR, Etc.) 6340' GR	22. Approx. Date Work will Start
23. Proposed Casing and Cementing Program See Operations Plan attached	
24. Authorized by: <u>Nancy Altman</u> Senior Staff Specialist	<u>9-22-03</u> Date

PERMIT NO. 10/ David J. Mankiewicz APPROVAL DATE _____
APPROVED BY _____ TITLE _____ DATE APR 22 2004

Archaeological Report attached

Threatened and Endangered Species Report not required, well is twinned with San Juan 30-6 Unit #32A

NOTE: This format is issued in lieu of U.S. BLM Form 3160-3

Title 18 U.S.C. Section 1001, makes it a crime for any person knowingly and willfully to make to any department or agency of the United States any false, fictitious or fraudulent statements or presentations as to any matter within its jurisdiction.

No notification required under Order R-8768-F

C.O.A. Compliance w/Rule 50

This action is subject to technical and procedural review pursuant to 43 CFR 3165.3 and appeal pursuant to 43 CFR 3165.4

NMOC

DRILLING OPERATIONS AUTHORIZED ARE SUBJECT TO COMPLIANCE WITH ATTACHED "GENERAL REQUIREMENTS".

District II
PO Drawer 00, Artesia, NM 88211-0719Instructions on back
Submit to Appropriate District Office
State Lease - 4 Copies
Fee Lease - 3 CopiesDistrict III
1000 Rio Brazos Rd., Aztec, NM 87410OIL CONSERVATION DIVISION
PO Box 2088
Santa Fe, NM 87504-2088District IV
PO Box 2088, Santa Fe, NM 87504-2088☐ AMENDED REPORT

WELL LOCATION AND ACREAGE DEDICATION PLAT

*API Number 30-039-27656		*Pool Code 71629	*Pool Name Basin Fruitland Coal
*Property Code 7469	*Property Name SAN JUAN 30-6 UNIT		*Well Number 451S
*OGRID No. 14538	*Operator Name BURLINGTON RESOURCES OIL & GAS COMPANY, LP		*Elevation 6340'

¹⁰ Surface Location

UL or lot no.	Section	Township	Range	Lot Idn	Feet from the	North/South line	Feet from the	East/West line	County
J	7	30N	6W		1560	SOUTH	1815	EAST	RIO ARriba

¹¹ Bottom Hole Location If Different From Surface

UL or lot no.	Section	Township	Range	Lot Idn	Feet from the	North/South line	Feet from the	East/West line	County
¹² Dedicated Acres 320					¹³ Joint or Infill	¹⁴ Consolidation Code	¹⁵ Order No.		

NO ALLOWABLE WILL BE ASSIGNED TO THIS COMPLETION UNTIL ALL INTERESTS HAVE BEEN CONSOLIDATED
OR A NON-STANDARD UNIT HAS BEEN APPROVED BY THE DIVISION

<div><p>16</p><p>5285.28'</p><p>5280.00'</p><p>1075'</p><p>820'</p><p>1815'</p><p>1560'</p><p>5273.40'</p><p>LAT: 36°49.4480'N LONG: 107°30.0512'W DATUM: NAD27</p><p>USA NM-079002</p><p>USA NM-03403</p></div>	<div><p>17 OPERATOR CERTIFICATION</p><p>I hereby certify that the information contained herein is true and complete to the best of my knowledge and belief</p><p><u>Nancy Oltmanns</u></p><p>Signature</p><p>Nancy Oltmanns</p><p>Printed Name</p><p><u>Senior Staff Specialist</u></p><p>Title</p><p><u>9-22-03</u></p><p>Date</p></div>
	<div><p>18 SURVEYOR CERTIFICATION</p><p>I hereby certify that the well location shown on this plat was plotted from field notes of actual surveys made by me or under my supervision, and that the same is true and correct to the best of my belief.</p><p><u>Date of Survey: JULY 28, 2003</u></p><p>Signature and Seal of Professional Surveyor</p><div><p><u>JASON C. EDWARDS</u></p><p>Certificate Number 15269</p></div></div>

OPERATIONS PLAN

Well Name: San Juan 30-6 Unit #451S
Location: 1560' FSL, 1815' FWL, Section 7, T-30-N, R-6-W
Latitude 36° 49.27, Longitude 107° 30.03
Rio Arriba County, NM
Formation: Basin Fruitland Coal
Elevation: 6340' GR

Formation:	Top	Bottom	Contents
Surface	San Jose	2347'	
Ojo Alamo	2347'	2454'	aquifer
Kirtland	2454'	2824'	gas
Fruitland	2824'	3062'	gas
Intermediate casing	3012'		
Top of Coal	3062'	3272'	
Base of Coal	3272'		
Pictured Cliffs	3282'		
Total Depth	3357'		

Logging Program:
Open hole - GR/RHOB from TD to 3012'
Mud log - TD to 3012'

Coring Program: none

Mud Program:

Interval	Type	Weight	Vis.	Fluid Loss
0- 120'	Spud/Air/Air Mist	8.4-9.0	40-50	no control
120-3012'	Non-dispersed	8.4-9.0	30-60	no control
3012-3357'	Air/Mist			no control

Casing Program (as listed, the equivalent, or better):

Hole Size	Depth Interval	Csg.Size	Wt.	Grade
12 1/4"	0' - 120'	9 5/8"	32.3#	H-40
8 3/4"	0' - 3012'	7"	20.0#	J-55
6 1/4"	3012' - 3357'	open hole		

Alternate Casing Program (as listed, the equivalent, or better):

Hole Size	Depth Interval	Csg.Size	Wt.	Grade
12 1/4"	0' - 120'	9 5/8"	32.3#	H-40
8 3/4"	0' - 3012'	7"	20.0#	J-55
6 1/4"	2912' - 3357'	5 1/2"	15.5#	J-55

Tubing Program:

0' - 3357'	2 3/8"	4.7#	J-55
------------	--------	------	------

Float Equipment: 9 5/8" surface casing - saw tooth guide shoe. Centralizers will be run in accordance with Onshore Order #2.

7" intermediate casing - guide shoe and self-fill float collar. Standard centralizers run every other joint above shoe. Two turbolizing type centralizers - one below and one into the base of the Ojo Alamo @ 2454'. Standard centralizers thereafter every fourth joint up to the base of the surface pipe.

Wellhead Equipment: 9 5/8" x 7" x 2 3/8" x 11" 2000 psi xmas tree assembly.

Cementing:

9 5/8" surface casing -

Pre-Set Drilled Cement with 23 sx Type I, II cement with 20% flyash mixed at 14.5 ppg, 1.61 cu ft per sack yield. (37 cu ft of slurry, bring cement to surface) Wait on cement for 24 hours for pre-set holes before pressure testing or drilling out from under surface.

Conventionally Drilled:

Cement with 88 sx Type III cement with 0.25 pps Celloflake, 3% calcium chloride. (113 cu ft of slurry, 200% excess, bring cement to surface) Wait on cement for 8 hrs for conventionally set holes before pressure testing or drilling out from under surface.

Wait on cement until cement establishes 250 psi compressive strength prior to nipple up of BOP.

7" intermediate casing - lead w/261 sacks Premium Lite cement with 3% calcium chloride, 0.25 pps Celloflake, 5 pps LCM-1, 0.4% fluid loss, 0.4% sodium metasilicate. Tail with 90 sacks Type III cement with 1% calcium chloride, 0.25 pps Celloflake, 0.2% fluid loss (679 cu.ft., 50% excess to circulate to surface).

5 1/2" liner - will not be cemented if run.

Note: If open hole logs are run, cement volumes will be based on 25% excess over caliper volumes.

BOP and tests:

Surface to intermediate TD - 11" 2000 psi (minimum) double gate BOP stack (Reference Figure #1). Prior to drilling out surface casing, test BOP and casing to 600 psi/30 min.

Intermediate TD to Total Depth - 7 1/6" 2000 psi (minimum) double gate BOP stack (Reference Figure #2). Prior to drilling out intermediate casing, test BOP and casing to 1500 psi for 30 minutes; all pipe rams and casing to 1500 psi for 30 minutes each.

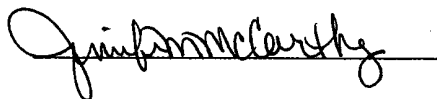
From surface to TD - choke manifold (Reference Figure #3).

Pipe rams will be actuated at least once each day and blind rams actuated once each trip to test proper functioning. An upper kelly cock valve with handle and drill string safety valves to fit each drill string will be maintained and available on the rig floor.

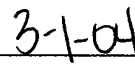
Additional information:

- The Fruitland Coal formation will be completed.
- Anticipated pore pressure for the Fruitland is 500 psi.
- This gas is dedicated.
- The east half of Section 7 is dedicated to this well.

Drilling Engineer:

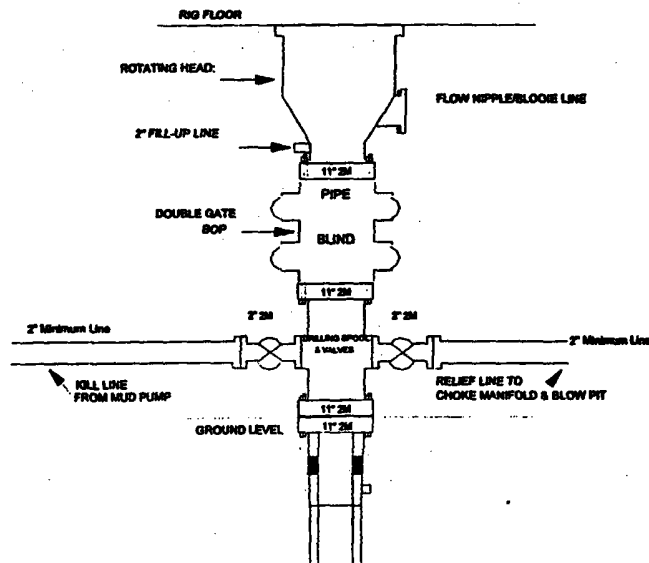


Date:



Burlington Resources

**Drilling Rig
2000 psi System**

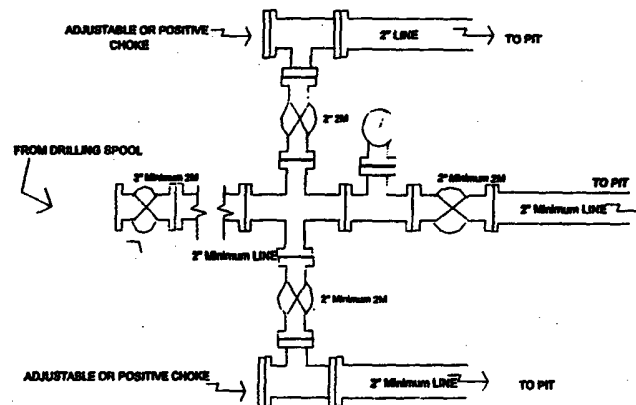


BOP Installation from Surface Casing Point to Total Depth. 11" Bore 10" Nominal, 2000 psi working pressure double gate BOP to be equipped with blind rams and pipe rams. A 500 psi rotating head on top of ram preventers. All BOP equipment is 2,000 psi working pressure

Figure #1

4-20-01

Drilling Rig Choke Manifold Configuration 2000 psi System

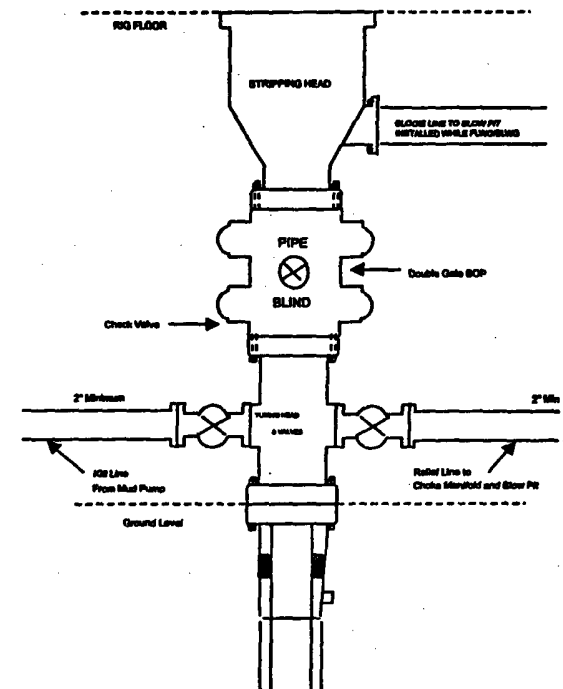


Choke manifold installation from Surface Casing Point to Total Depth. 2,000psi working pressure equipment with two chokes.

Figure #3

BURLINGTON RESOURCES

**Completion/Workover Rig
BOP Configuration
2,000 psi System**



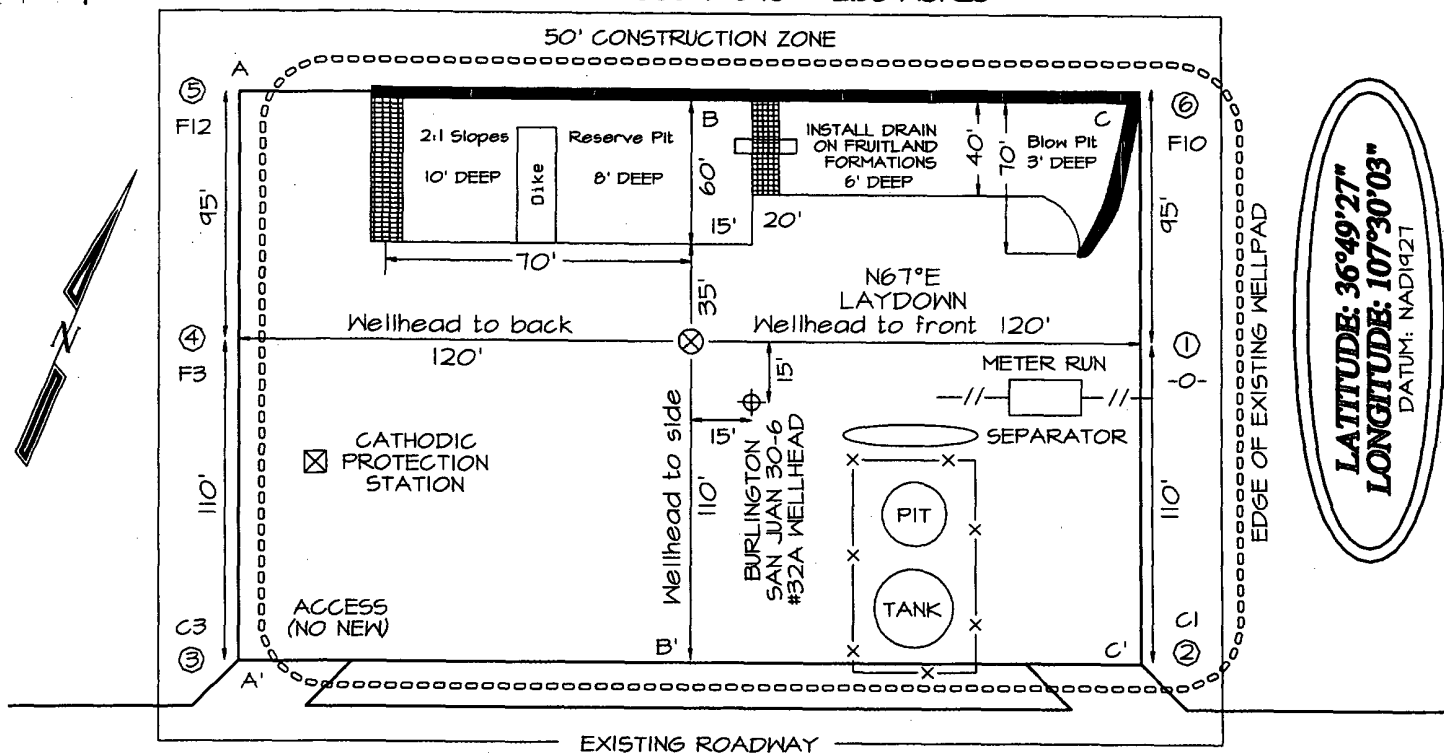
Minimum BOP installation for all Completion/Workover Operations. 7-1/16" bore, 2000 psi minimum working pressure double gate BOP to be equipped with blind and pipe rams. A stripping head to be installed on the top of the BOP. All BOP equipment is 2000 psi working pressure or greater excluding 500 psi stripping head.

Figure #2

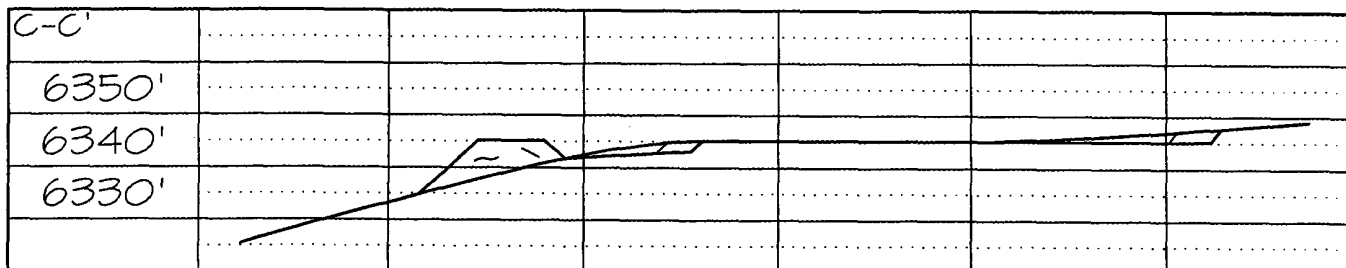
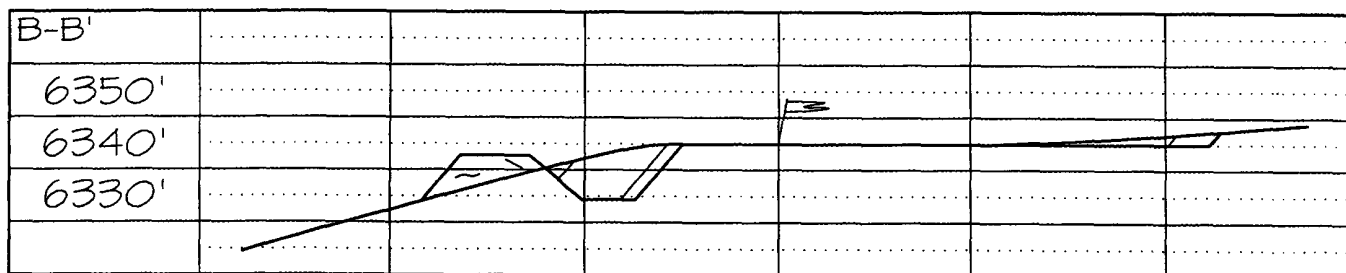
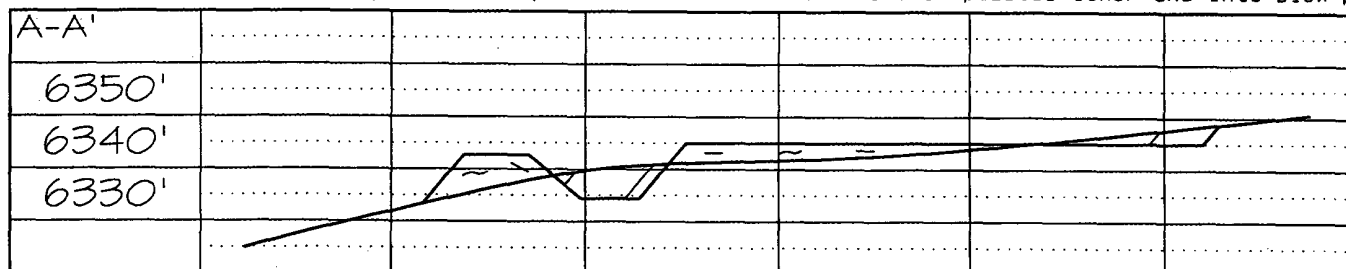
4-20-01

BURLINGTON RESOURCES OIL & GAS COMPANY SAN JUAN COUNTY UNIT 14513
 1560' FSL & 1815' FEL, SECTION 7, T30N, R6W, NMPM, RIO ARriba COUNTY, NM
 GROUND ELEVATION: 6340' DATE: JULY 28, 2003

205' X 240' 305' X 340' = 2.38 ACRES



Reserve Pit Dike: to be 8' above Deep side (overflow - 3' wide and 1' above shallow side).
 Blow Pit: overflow pipe halfway between top and bottom and to extend over plastic liner and into blow pit.



Note: Contractor should call One-Call for location of any marked or unmarked buried pipelines or cables on well pad and/or access road at least two (2) working days prior to construction