

UNITED STATES
DEPARTMENT OF THE INTERIOR
BUREAU OF LAND MANAGEMENT

APPLICATION FOR PERMIT TO DRILL, DEEPEN, OR PLUG BACK

200 OCT 20 PM 2:26

1a. Type of Work DRILL	5. Lease Number SF-080674
1b. Type of Well GAS	Unit Reporting Number 891001054A
2. Operator BURLINGTON RESOURCES Oil & Gas Company	6. If Indian, All. or Tribe
3. Address & Phone No. of Operator PO Box 4289, Farmington, NM 87499 (505) 326-9700	7. Unit Agreement Name San Juan 27-4 Unit
4. Location of Well 625' FNL, 795' FWL Latitude 36° 33.9, Longitude 107° 14.7	8. Farm or Lease Name San Juan 27-4 Unit
	9. Well Number 149C
	10. Field, Pool, Wildcat Blanco Mesaverde / Basin Dakota
	11. Sec., Twn, Rge, Mer. (NMPM) Sec. 22, T-27-N, R-4-W API # 30-039-26531
14. Distance in Miles from Nearest Town 19 miles from Gobernador	12. County Rio Arriba
	13. State NM
15. Distance from Proposed Location to Nearest Property or Lease Line 625'	
16. Acres in Lease	17. Acres Assigned to Well 320 W/2
18. Distance from Proposed Location to Nearest Well, Drlg, Compl, or Applied for on this Lease 1000'	
19. Proposed Depth 6536'	20. Rotary or Cable Tools Rotary
21. Elevations (DF, FT, GR, Etc.) 7104' GR	22. Approx. Date Work will Start
23. Proposed Casing and Cementing Program See Operations Plan attached	DRILLING OPERATIONS AUTHORIZED ARE SUBJECT TO COMPLIANCE WITH ATTACHED "GENERAL REQUIREMENTS"
24. Authorized by: <u>Peggy Cali</u> Regulatory/Compliance Supervisor	<u>4-15-00</u> Date

PERMIT NO.

APPROVAL DATE

APPROVED BY

TITLE

DATE

Archaeological Report to be submitted

Threatened and Endangered Species Report to be submitted

NOTE: This format is issued in lieu of U.S. BLM Form 3160-3

Title 18 U.S.C. Section 1001, makes it a crime for any person knowingly and willfully to make to any department or agency of the United States any false, fictitious or fraudulent statements or presentations as to any matter within its jurisdiction.

District I
PO Box 1980, Hobbs, NM 88241-1980

District II
PO Drawer DD, Artesia, NM 88211-0719

District III
1000 Rio Brazos Rd., Aztec, NM 87410

District IV
PO Box 2088, Santa Fe, NM 87504-2088

State of New Mexico
Energy, Minerals & Natural Resources Department

OIL CONSERVATION DIVISION
PO Box 2088
Santa Fe, NM 87504-2088

Form C-102
Revised February 21, 1994
Instructions on back
Submit to Appropriate District Office
State Lease - 4 Copies
Fee Lease - 3 Copies

☐ AMENDED REPORT

WELL LOCATION AND ACREAGE DEDICATION PLAT

*API Number 30-039-26531		*Pool Code 72319/71599	*Pool Name Blanco Mesaverde/Basin Dakota
*Property Code 7452	*Property Name SAN JUAN 27-4 UNIT		*Well Number 149C
*GRID No. 14538	*Operator Name BURLINGTON RESOURCES OIL & GAS COMPANY		*Elevation 7104'

¹⁰ Surface Location

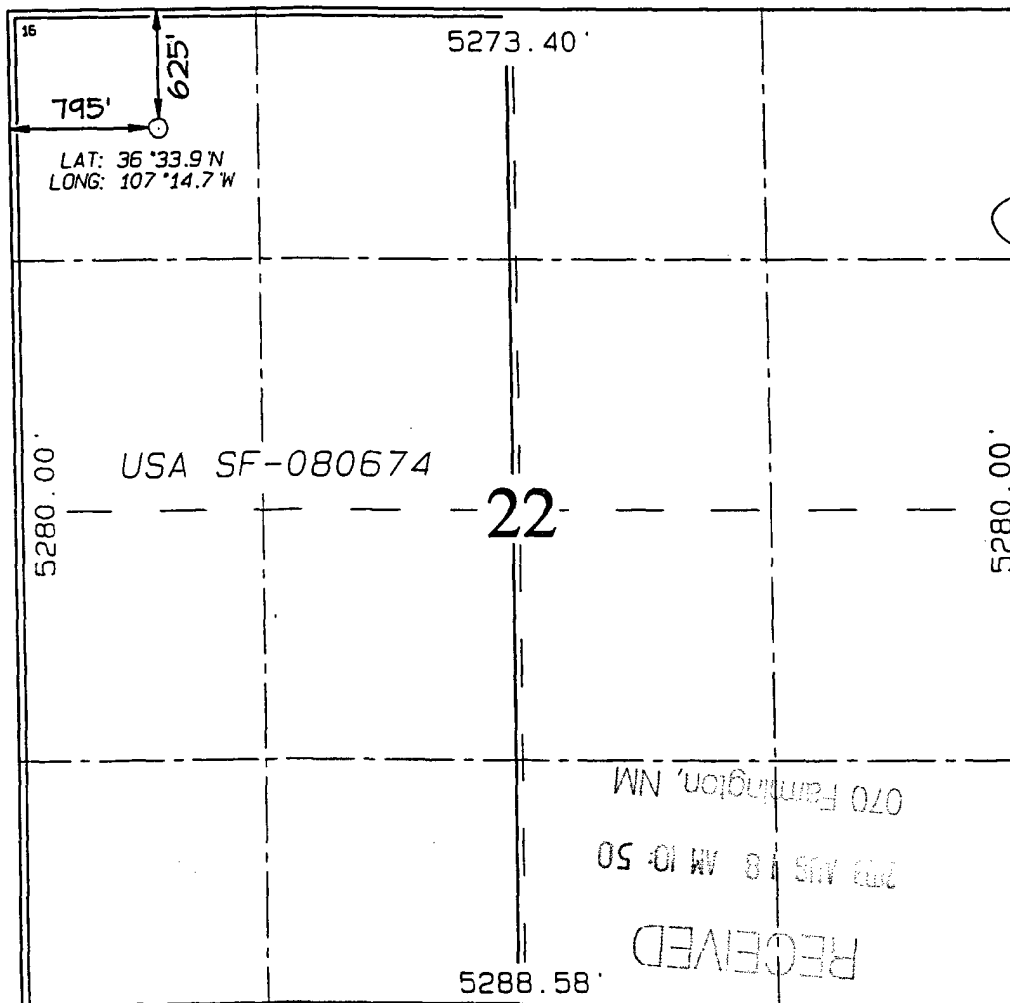
UL or lot no.	Section	Township	Range	Lot Idn	Feet from the	North/South line	Feet from the	East/West line	County
0	22	27N	4W		625	NORTH	795	WEST	RIO ARriba

¹¹ Bottom Hole Location If Different From Surface

UL or lot no.	Section	Township	Range	Lot Idn	Feet from the	North/South line	Feet from the	East/West line	County

¹² Dedicated Acres W/320	¹³ Joint or Infill	¹⁴ Consolidation Code	¹⁵ Order No.
--	-------------------------------	----------------------------------	-------------------------

NO ALLOWABLE WILL BE ASSIGNED TO THIS COMPLETION UNTIL ALL INTERESTS HAVE BEEN CONSOLIDATED
OR A NON-STANDARD UNIT HAS BEEN APPROVED BY THE DIVISION



¹⁷ OPERATOR CERTIFICATION

I hereby certify that the information contained herein is true and complete to the best of my knowledge and belief.

Signature

Peggy Cole
Printed Name

Regulatory Supervisor
Title

Date

¹⁸ SURVEYOR CERTIFICATION

I hereby certify that the well location shown on this plat was plotted from field notes of actual surveys made by or under my supervision and that the same is true and correct to the best of my belief.

JULY 11, 2000

Date of Survey

Signature and Seal of Professional Surveyor

NEALEC EDWARDS
NEW MEXICO
6857
Certificate Number 6857

UNITED STATES
DEPARTMENT OF THE INTERIOR
BUREAU OF LAND MANAGEMENT

Sundry Notices and Reports on Wells

RECEIVED

1. Type of Well
GAS

2003 AUG 18 AM 10:50

070 Farmington, NM

2. Name of Operator

BURLINGTON

RESOURCES OIL & GAS COMPANY LP

3. Address & Phone No. of Operator

PO Box 4289, Farmington, NM 87499 (505) 326-9700

4. Location of Well, Footage, Sec., T, R, M

625' FNL, 795' FWL, Sec.22, T-27-N, R-4-W, NMMP

5. Lease Number

NMSF-080674

6. If Indian, All. or
Tribe Name

7. Unit Agreement Name

San Juan 27-4 Unit

8. Well Name & Number

San Juan 27-4 U #149C

9. API Well No.

30-039-26531

10. Field and Pool

Blanco MV/Basin DK

11. County and State

Rio Arriba Co, NM

12. CHECK APPROPRIATE BOX TO INDICATE NATURE OF NOTICE, REPORT, OTHER DATA

Type of Submission

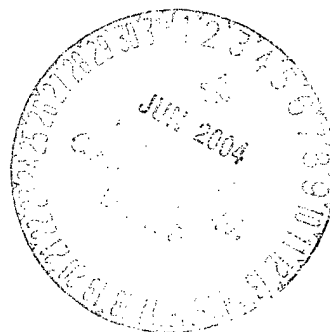
☒ Notice of Intent☐ Subsequent Report☐ Final Abandonment

Type of Action

☐ Abandonment☐ Recompletion☐ Plugging Back☐ Casing Repair☐ Altering Casing☒ Other -☒ Change of Plans☐ New Construction☐ Non-Routine Fracturing☐ Water Shut off☐ Conversion to Injection

13. Describe Proposed or Completed Operations

It is intended to add the Dakota formation to the submitted Application for Permit to Drill, Deepen or Plug Back. Attached are new C-102 plat, operations plan, blow out preventer diagrams, multipoint surface plan, facilities diagram, and cut and fill diagram. The well will commingled during completion operations. A commingle application will be submitted for approval.



14. I hereby certify that the foregoing is true and correct.

Signed Reggie Call Title Regulatory Supervisor Date 7/17/03
no

(This space for Federal or State Office use)

APPROVED BY [Signature] Title AFM Date 6-1-04
CONDITION OF APPROVAL, if any:

NMOC

OPERATIONS PLAN

Well Name: San Juan 27-4 Unit #149C
625' FNL, 795' FWL, Section 22, T-27-N, R-4-W
Rio Arriba County, New Mexico
Latitude 36° 33.9, Longitude 107° 14.7
Formation: Blanco Mesa Verde/Basin Dakota
Elevation: 7104' GL

<u>Formation Tops:</u>	<u>Top</u>	<u>Bottom</u>	<u>Contents</u>
Surface	San Jose	3390'	
Ojo Alamo	3390'	3526'	aquifer
Kirtland	3526'	3802'	gas
Fruitland	3802'	3957'	
Pictured Cliffs	3957'	4062'	gas
Lewis	4062'	4477'	gas
Intermediate TD	4162'		
Huerfano Bentonite	4477'	4940'	gas
Chacra	4940'	5746'	gas
Cliff House	5746'	5803'	
Menefee	5803'	6136'	gas
Point Lookout	6136'	6671'	gas
Mancos	6671'	7301'	gas
Gallup	7301'	8086'	gas
Greenhorn	8086'	8151'	gas
Graneros	8151'	8186'	gas
Dakota	8186'	8361'	gas
Oak Canyon	8361'		
TD	8386'		

Logging Program:

Mud logs - none
Cased hole - CBL-CCL-GR - TD to surface
Open hole - none
Cores - none

Mud Program:

<u>Interval</u>	<u>Type</u>	<u>Weight</u>	<u>Vis.</u>	<u>Fluid Loss</u>
0- 120'	Spud	8.4-9.0	40-50	no control
120- 4162'	LSND	8.4-9.0	30-60	no control
4162- 8386'	Air/N2	n/a	n/a	n/a

Pit levels will be visually monitored to detect gain or loss of fluid control.

Casing Program (as listed, the equivalent, or better):

<u>Hole Size</u>	<u>Depth Interval</u>	<u>Csg. Size</u>	<u>Wt.</u>	<u>Grade</u>
12 1/4"	0' - 120'	9 5/8"	32.3#	WC-50
8 3/4"	0' - 4162'	7"	20.0#	J-55
6 1/4"	0' - 8386'	4 1/2"	10.5#	K-55

Tubing Program:

0' - 8386'

BOP Specifications, Wellhead and Tests:

Surface to Intermediate TD -

11" 2000 psi minimum double gate BOP stack (Reference Figure #1). After nipple-up prior to drilling out surface casing, rams and casing will be tested to 600 psi for 30 minutes.

Intermediate TD to Total Depth -

11" 2000 psi minimum double gate BOP stack (Reference Figure #1). After nipple-up prior to drilling out intermediate casing, rams and casing will be tested to 1500 psi for 30 minutes.

Surface to Total Depth -

2" nominal, 2000 psi minimum choke manifold (Reference Figure #2).

Completion Operations -

7 1/16" 2000 psi double gate BOP stack (Reference Figure #3). After nipple-up prior to completion, pipe rams, casing and liner top will be tested to 2000 psi for 15 minutes.

Wellhead -

9 5/8" x 7" x x 4 1/2" x 2 3/8" x 3000 psi tree assembly.

General -

- Pipe rams will be actuated once each day and blind rams will be actuated once each trip to test proper functioning.
- An upper kelly cock valve with handle available and drill string valves to fit each drill string will be available on the rig floors at all times.
- BOP pit level drill will be conducted weekly for each drilling crew.
- All BOP tests and drills will be recorded in daily drilling reports.
- Blind and pipe rams will be equipped with extension hand wheels.

Cementing:

9 5/8" surface casing - cement with 27 sx Type III cement with 1/4# Celloflake/sx and 2% calcium chloride or equivalent (38 cu.ft. of slurry). WOC 24 hours for pre-set holes or 8 hours for conventionally set holes before pressure testing or drilling out from under surface casing. Test casing to 600 psi for 30 minutes. Saw tooth guide shoe on bottom. Bowspring centralizers will be run in accordance with Onshore Order #2.

7" intermediate casing -

Lead w/382 sx Premium Lite cement with 3% calcium chloride, 0.25 pps Flocele, 5 pps LCM-1, 0.4% fluid loss, 0.4% sodium metasilicate. Tail w/90 sx Type III cmt w/1% calcium chloride, 0.25 pps Flocele, 0.2% fluid loss (938 cu.ft. of slurry, 50% excess to circulate to surface.) WOC minimum of 8 hours before drilling out intermediate casing. If cement does not circulate to surface, a CBL or a temperature survey will be run during completion operations to determine TOC. Test casing to 1500 psi for 30 minutes.

7" intermediate casing alternative two stage: Stage collar 3502'. First stage: cement with w/108 sx Type III cmt w/1% calcium chloride, 0.25 pps Flocele, 0.2% fluid loss. Second stage: 371 sx Premium Lite cement with 3% calcium chloride, 0.25 pps Flocele, 5 pps LCM-1, 0.4% fluid loss, 0.4% sodium metasilicate (938 cu.ft., 50% excess to circulate to surface).

Cement nose guide shoe on bottom with float collar spaced on top of shoe joint. Bowspring centralizers spaced every other joint off bottom, to the base of the Ojo Alamo at 3526'. Two turbolating centralizers at the base of the Ojo Alamo at 3526'. Bowspring centralizers spaced every fourth joint from the base of the Ojo Alamo to the base of the surface casing.

4 1/2" Production casing -

Cement to cover minimum of 100' of 4 1/2" x 7" overlap. Lead with 291 sx 35/65 poz Type III cement w/0.25 pps Celloflake, 0.3% CD-32, 6.25 pps LCM-1, 1% fluid loss, 7 pps CSE, 6% gel (577 cu.ft.), (30% excess to cement 4 1/2" x 7" overlap. WOC a minimum of 18 hrs prior to completing.)

Cement float shoe on bottom with float collar spaced on top of float shoe.

Note: If open hole logs are run, cement volumes will be based on 25% excess over caliper volumes.

- If hole conditions permit, an adequate water spacer will be pumped ahead of each cement job to prevent cement/ mud contamination or cement hydration.

Special Drilling Operations (Gas/Mist Drilling):

The following equipment will be operational while gas/mist drilling:

- An anchored blooie line will be utilized to discharge all cuttings and circulating medium to the blow pit a minimum of 100' from the wellhead.
- The blooie line will be equipped with an automatic igniter or pilot light.
- Compressors will be located a minimum of 100' from the wellhead in the opposite direction from the blooie line.
- Engines will have spark arresters or water cooled exhaust.
- Deduster equipment will be utilized.
- The rotating head will be properly lubricated and maintained.
- A float valve will be utilized above the bit.
- Mud circulating equipment, water, and mud materials will be sufficient to maintain control of the well.

Additional Information:

- The Mesaverde and Dakota formations will be completed and commingled.
- No abnormal temperatures or hazards are anticipated.
- Anticipated pore pressures are as follows:

Fruitland Coal	300 psi
Pictured Cliffs	600 psi
Mesa Verde	700 psi
Dakota	2500 psi
- Sufficient LCM will be added to the mud system to maintain well control, if lost circulation is encountered.
- The west half of Section 22 is dedicated to the Mesaverde and the Dakota in this well.
- This gas is dedicated.

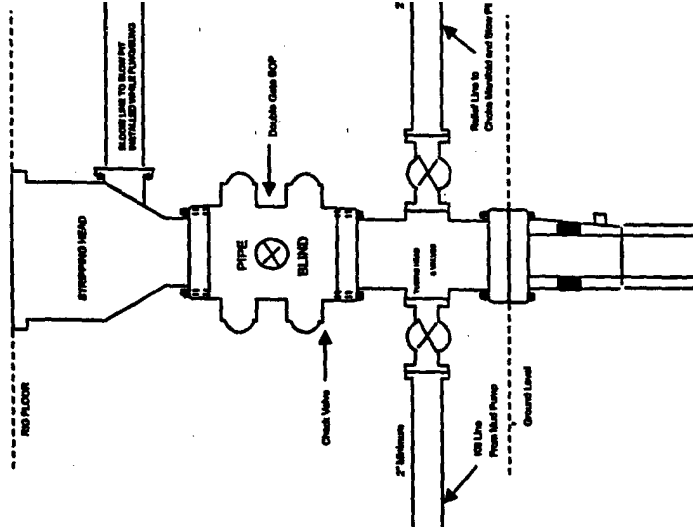
Sean Corrigan
Drilling Engineer

August 14, 2003
Date

BURLINGTON RESOURCES

BURLINGTON RESOURCES

**Completion/Workover Rig
BOP Configuration
3,000 psi System**

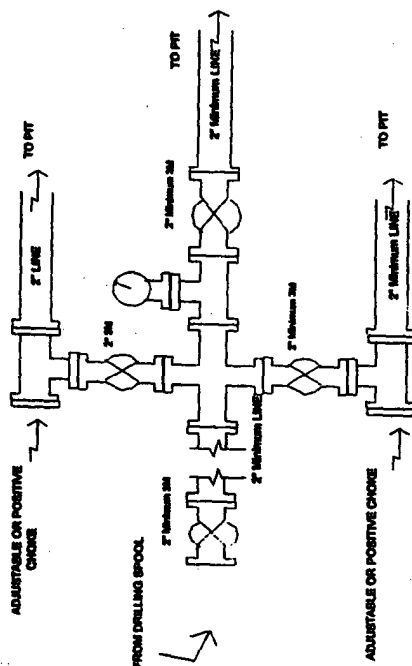


BOP Installation from Surface Casing Point to Total Depth, 11" Bore 10" Nominal, 3,000 psi working pressure double gate BOP to be equipped with blind rams and pipe rams. A 500 psi working pressure ram preventer. All BOP equipment is 3,000 psi working pressure

Figure #1

4-20-01

4-20-01



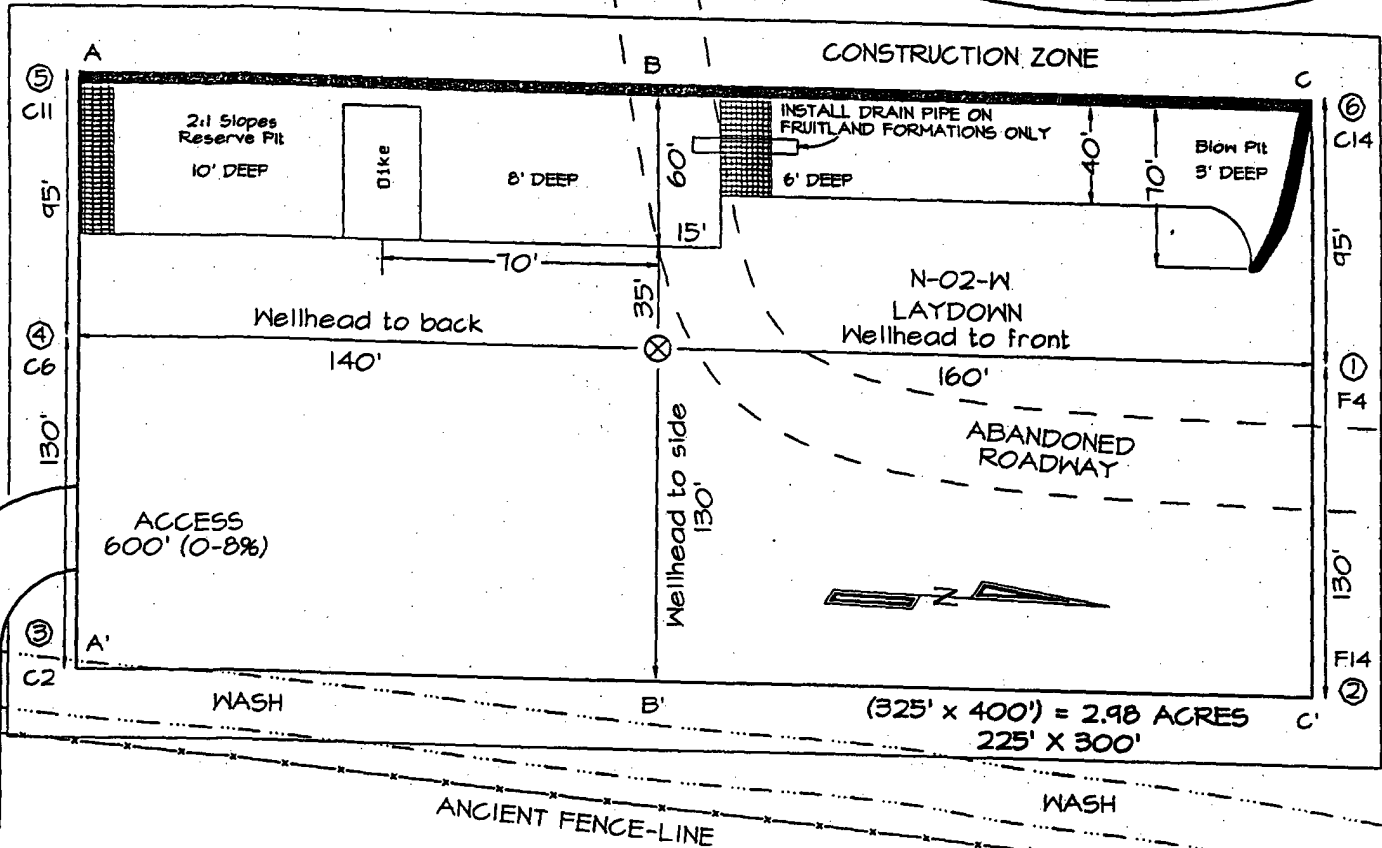
Choke manifold installation from Surface Casing Point to Total Depth. 3,000psi working pressure equipment with two chokes.

Figure #2

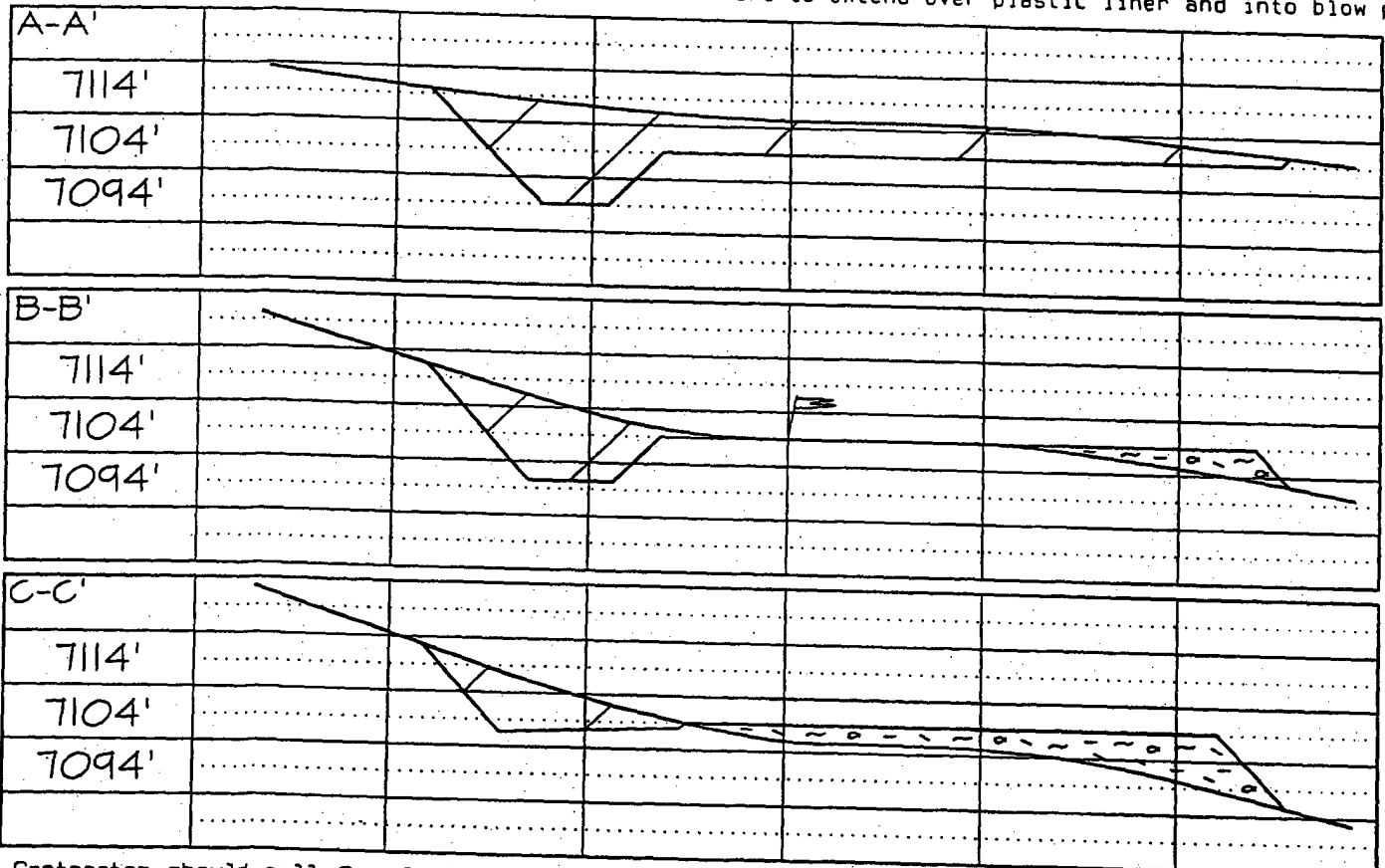
4-20-01

Minimum BOP Installation for all Completion/Workover Operations. 7-1/8" bore, 3000 psi minimum working pressure double gate BOP to be equipped with blind and pipe rams. A stripping head to be installed on the top of the BOP. All BOP equipment is 3000 psi working pressure or greater excluding 500 psi stripping head.

Figure #3



Reserve Pit Dike: to be 8' above Deep side (overflow - 3' wide and 1' above shallow side).
Blow Pit: overflow pipe halfway between top and bottom and to extend over plastic liner and into blow pit.



Note: Contractor should call One-Call for location of any marked or unmarked buried pipelines or cable on well pad and/or access road at least two (2) working days prior to construction