

UNITED STATES
DEPARTMENT OF THE INTERIOR
BUREAU OF LAND MANAGEMENT

APPLICATION FOR PERMIT TO DRILL, DEEPEN, OR PLUG BACK

RECEIVED

1a. Type of Work DRILL	5. Lease Number NM-012293	2004 MAY 13 PM 2:40
1b. Type of Well GAS	Unit Reporting Number 070 Farmington, NM	
2. Operator BURLINGTON RESOURCES Oil & Gas Company	6. If Indian, All. or Tribe	
3. Address & Phone No. of Operator PO Box 4289, Farmington, NM 87499 (505) 326-9700	7. Unit Agreement Name San Juan 30-6 Unit	
4. Location of Well 1550' FSL, 1115' FEL Latitude 36° 48.5768'N, Longitude 107° 30.9890'W	8. Farm or Lease Name San Juan 30-6 Unit	
	9. Well Number #463S	
	10. Field, Pool, Wildcat Basin Fruitland Coal	
	11. Sec., Twn, Rge, Mer. (NMPM) Sec. 13, T30N, R07W	
	API # 30-039-27740	
14. Distance in Miles from Nearest Town 13 miles to Navajo City, NM	12. County Rio Arriba	13. State NM
15. Distance from Proposed Location to Nearest Property or Lease Line 1115'		
16. Acres in Lease	17. Acres Assigned to Well 320 E/2	
18. Distance from Proposed Location to Nearest Well, Drlg, Compl, or Applied for on this Lease 600'		
19. Proposed Depth 3218'	20. Rotary or Cable Tools Rotary	
21. Elevations (DF, FT, GR, Etc.) 6209' GR	22. Approx. Date Work will Start	
23. Proposed Casing and Cementing Program See Operations Plan attached		
24. Authorized by: <u>Joni Clark</u> Regulatory Specialist		<u>2-10-04</u> Date

PERMIT NO. _____ APPROVAL DATE _____
APPROVED BY [Signature] TITLE AFM DATE 6-3-04

Archaeological Report attached

Threatened and Endangered Species Report attached

NOTE: This format is issued in lieu of U.S. BLM Form 3160-3

Title 18 U.S.C. Section 1001, makes it a crime for any person knowingly and willfully to make to any department or agency of the United States any false, fictitious or fraudulent statements or presentations as to any matter within its jurisdiction.

NO HPA NOTIFICATION REQUIRED UNDER ORDER R-8768F.

This action is subject to technical and procedural review pursuant to 43 CFR 3165.3 and appeal pursuant to 43 CFR 3165.4

NMOCED

DRILLING OPERATIONS AUTHORIZED ARE SUBJECT TO COMPLIANCE WITH ATTACHED "GENERAL REQUIREMENTS".

District II
PO Drawer DD, Artesia, NM 88211-0719Instructions on back
Submit to Appropriate District Office
State Lease - 4 Copies
Fee Lease - 3 CopiesDistrict III
1000 Rio Brazos Rd., Aztec, NM 87410OIL CONSERVATION DIVISION
PO Box 2088
Santa Fe, NM 87504-2088District IV
PO Box 2088, Santa Fe, NM 87504-2088☐ AMENDED REPORT

WELL LOCATION AND ACREAGE DEDICATION PLAT

*API Number 30-039- 27740		*Pool Code 71629	*Pool Name Basin Fruitland Coal
*Property Code 7469	*Property Name SAN JUAN 30-6 UNIT		*Well Number 4635
*GRID No. 14538	*Operator Name BURLINGTON RESOURCES OIL & GAS COMPANY, LP		*Elevation 6209'

10 Surface Location

UL or lot no.	Section	Township	Range	Lot Idn	Feet from the	North/South line	Feet from the	East/West line	County
I	13	30N	7W		1550	SOUTH	1115	EAST	RIO ARriba

11 Bottom Hole Location If Different From Surface

UL or lot no.	Section	Township	Range	Lot Idn	Feet from the	North/South line	Feet from the	East/West line	County

12 Dedicated Acres

13 Joint or Infill

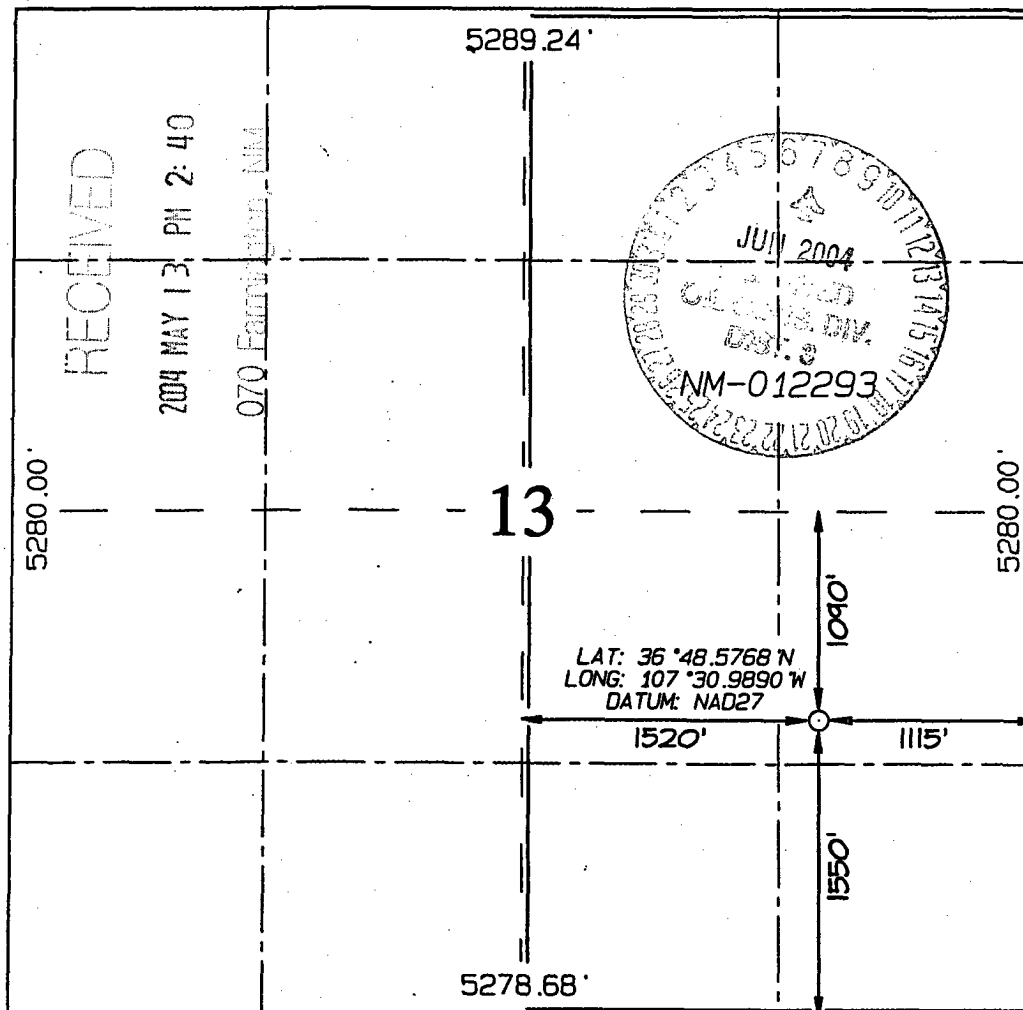
14 Consolidation Code

15 Order No.

FTC E/320

NO ALLOWABLE WILL BE ASSIGNED TO THIS COMPLETION UNTIL ALL INTERESTS HAVE BEEN CONSOLIDATED
OR A NON-STANDARD UNIT HAS BEEN APPROVED BY THE DIVISION

16



17 OPERATOR CERTIFICATION

I hereby certify that the information contained herein is true and complete to the best of my knowledge and belief

Joni Clark
Signature

Joni Clark

Printed Name

Regulatory Specialist

Title

2-10-04

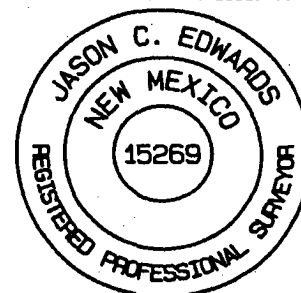
Date

18 SURVEYOR CERTIFICATION

I hereby certify that the well location shown on this plat was plotted from field notes of actual surveys made by me or under my supervision, and that the same is true and correct to the best of my belief.

Date of Survey: OCTOBER 10, 2003

Signature and Seal of Professional Surveyor



JASON C. EDWARDS
Certificate Number 15269

OPERATIONS PLAN

Well Name: San Juan 30-6 Unit # 463S
Location: 1550' FSL, 1115' FEL Section 13, T-30-N, R-07-W
Latitude 36° 48.5768'N, Longitude 107° 30.9890'W
Rio Arriba, NM
Formation: Basin Fruitland Coal
Elevation: 6209'GR

Formation:	Top	Bottom	Contents
Surface	San Jose	1941'	
Ojo Alamo	1941'	2039'	aquifer
Kirtland	2039'	2826'	
Fruitland	2826'	2928'	
Intermediate TD	2898'		
Fruitland Coal	2928'	3133'	gas
B/Basal Coal	3133'	3150'	gas
Pictured Cliffs	3150'		
Total Depth	3218'		

Logging Program: none
Mudlog: from 7" to 3218'
Coring Program: none

Mud Program:

Interval	Type	Weight	Vis.	Fluid Loss
0- 120'	Spud Mud/Air/Air Mist	8.4-9.0	40-50	no control
120-2898'	Non-dispersed	8.4-9.0	30-60	no control
2898-3218'	Air/Mist			

Casing Program (as listed, the equivalent, or better):

Hole Size	Depth Interval	Csg.Size	Wt.	Grade
12 1/4"	0' - 120'	9 5/8"	32.3#	H-40
8 3/4"	0' - 2898'	7"	20.0#	J-55
6 1/4"	2898' - 3218'	open hole		

Alternate Casing Program (as listed, the equivalent, or better):

Hole Size	Depth Interval	Csg.Size	Wt.	Grade
12 1/4"	0' - 120'	9 5/8"	32.3#	H-40
8 3/4"	0' - 2898'	7"	20.0#	J-55
6 1/4"	2858' - 3218'	5 1/2"	15.5#	J-55

Tubing Program:

0' - 3218' 2 3/8" 4.7# J-55

Float Equipment: 9 5/8" surface casing - saw tooth guide shoe. Centralizers will be run in accordance with Onshore Order #2.

7" intermediate casing - guide shoe and self-fill float collar. Standard centralizers run every other joint above shoe. Two turbolizing type centralizers - one below and one into the base of the Ojo Alamo @ 2039'. Standard centralizers thereafter every fourth joint up to the base of the surface pipe.

Wellhead Equipment: 9 5/8" x 7" x 2 3/8" x 11" 2000 psi xmas tree assembly.

Cementing:

9 5/8" surface casing -

Pre-Set Drilled Cement with 23 sx Type I, II cement with 20% flyash mixed at 14.5 ppg, 1.61 cu ft per sack yield. (37 cu ft of slurry, bring cement to surface) Wait on cement for 24 hours for pre-set holes before pressure testing or drilling out from under surface.

Conventionally Drilled

Cement with 88 sx Type III cement with 0.25 pps Celloflake, 3% CaCl. (113 cu ft of slurry, 200% excess, bring cement to surface) Wait on cement for 8 hrs for conventionally set holes before pressure testing or drilling out from under surface.

WOC until cement establishes 250 psi compressive strength prior to NU of BOPE.

7" intermediate casing - lead w/248 sacks Premium Lite with 3% calcium chloride, 5 pps LCM-1, and 1/4#/sack flocele, 0.4% FL-52, & 0.4% SMS. Tail with 90 sacks Type III cmt with 1% calcium chloride, 1/4#/sack flocele and 0.2% FL-52 (653 cu.ft., 50% excess to circulate to surface).

5 1/2" liner - will not be cemented if run.

Note: If open hole logs are run, cement volumes will be based on 25% excess over caliper volumes.

BOP and tests:

Surface to intermediate TD - 11" 2000 psi (minimum) double gate BOP stack (Reference Figure #1). Prior to drilling out surface casing, test BOPE to 600 psi for 30 min.

Intermediate TD to Total Depth - 7 1/6" 2000 psi (minimum) completion BOP stack (Reference Figure #2). Prior to drilling out intermediate casing, test BOPE and casing to 1500 psi for 30 minutes.


From surface to 7" TD - a choke manifold will be installed in accordance with Onshore Order No. 2 (Reference Figure #3). When the cavitation completion rig drills the production hole, the completion rig configuration will be used (Reference Figure #4).

Pipe rams will be actuated at least once each day and blind rams actuated once each trip to test proper functioning. An upper kelly cock valve with handle and drill string safety valves to fit each drill string will be maintained and available on the rig floor.

Additional information:

- * The Fruitland Coal formation will be completed.
- * Anticipated pore pressure for the Fruitland is less than 500 psi.
- * This gas is dedicated.
- * The east half of Section 13 is dedicated to the Fruitland Coal.

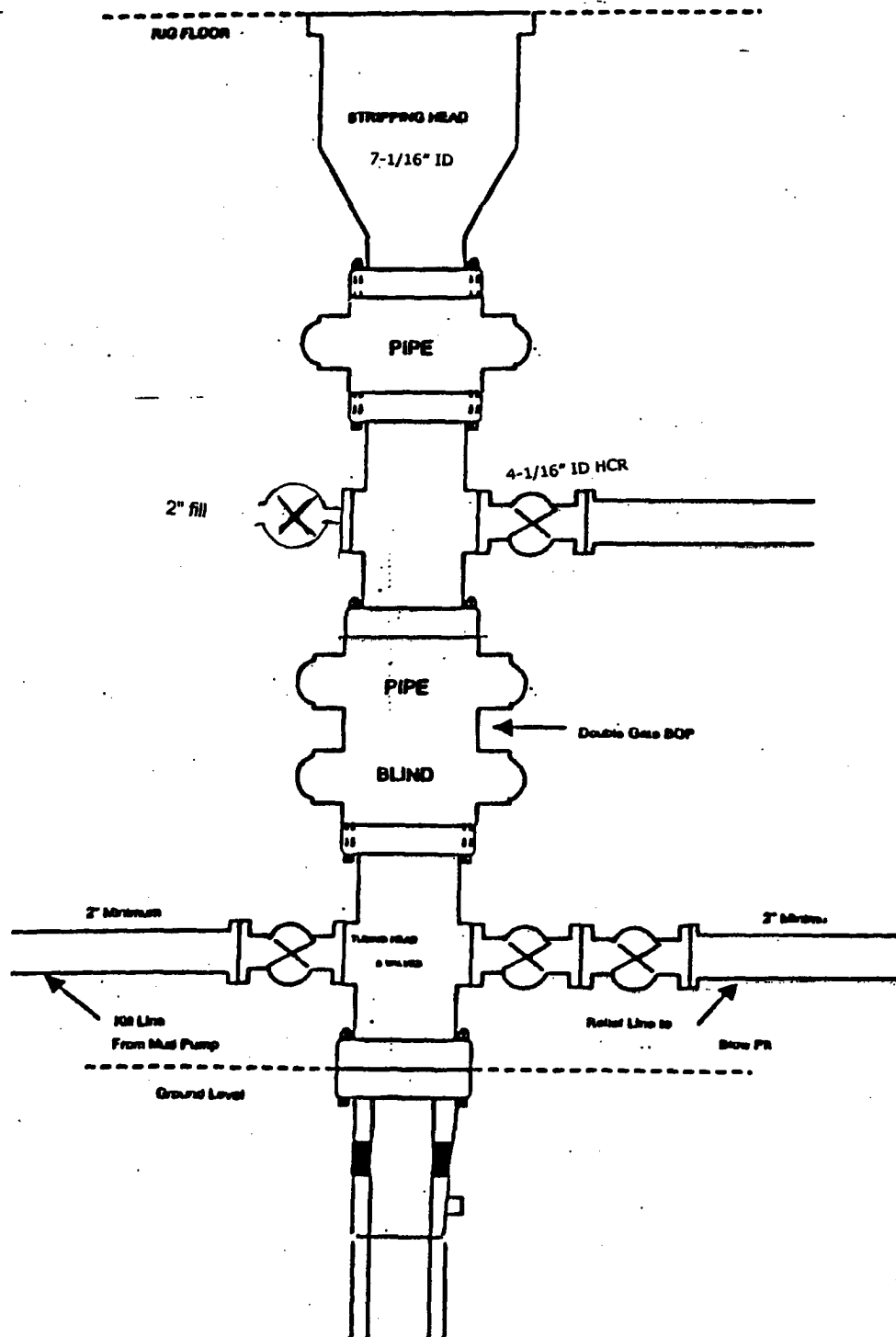
Date: 4-21-04

Drilling Engineer: 

BURLINGTON RESOURCES

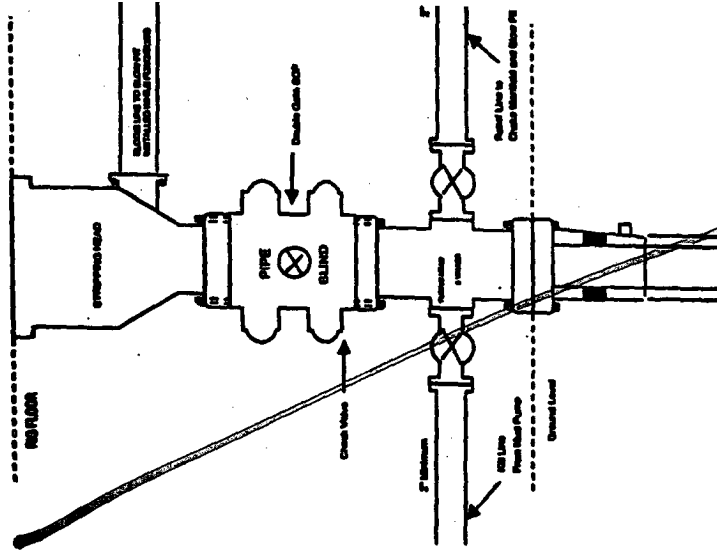
FIGURE #4

Cavitation Rig
BOP Configuration
2,000 psi Minimum System



BURLINGTON RESOURCES

Completion/Workover Rig
BOP Configuration
2,000 psi System

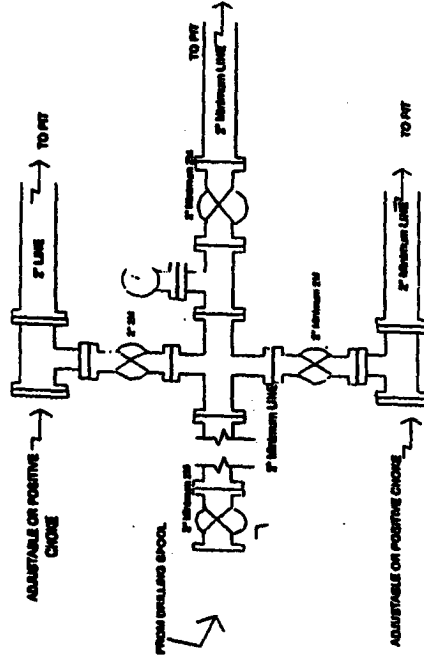


Minimum BOP Installation for a Completion/Workover Operations. 7-1/16" bore, 2000 psi minimum working pressure double gate BOP to be equipped with blind and pipe rams. A stripping head to be installed on the top of the BOP. All BOP equipment is 2000 psi working pressure or greater excluding 500 psi stripping head.

Figure #2

BURLINGTON RESOURCES

Drilling Rig
Choke Manifold Configuration
2000 psi System

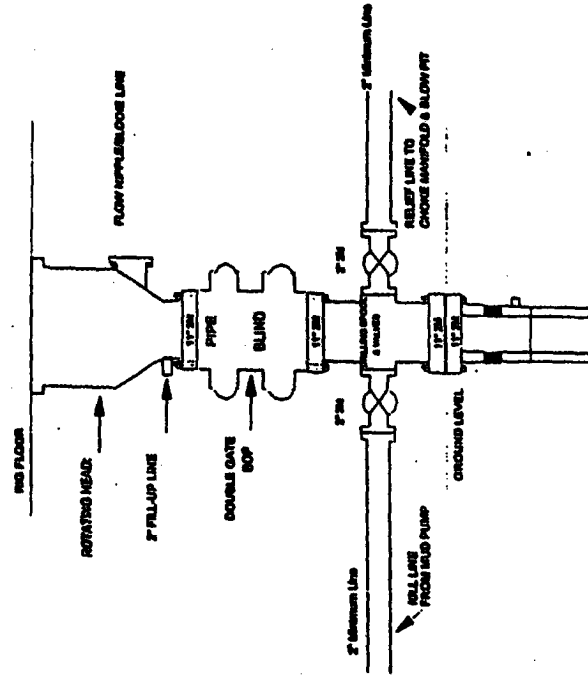


Choke manifold installation from Surface Casing Point to Total Depth. 2,000psi working pressure equipment with two chokes.

Figure #3

Burlington Resources

Drilling Rig
2000 psi System



BOP Installation from Surface Casing Point to Total Depth. 11" Bore 10" Nominal, 2000 psi working pressure double gate BOP to be equipped with blind rams and pipe rams. A 500 psi stripping head on top of ram preventers. All BOP equipment is 2,000 psi working pressure

Figure #1

Submit 3 Copies To Appropriate District
Office
District I
1625 N. French Dr., Hobbs, NM 88240
District II
1301 W. Grand Ave., Artesia, NM 88210
District III
1000 Rio Brazos Rd., Aztec, NM 87410
District IV
1220 S. St. Francis Dr., Santa Fe, NM
87505

State of New Mexico
Energy, Minerals and Natural Resources

Form C-103
March 4, 2004

OIL CONSERVATION DIVISION
1220 South St. Francis Dr.
Santa Fe, NM 87505

WELL API NO. 30-039-
5. Indicate Type of Lease STATE <input type="checkbox"/> FEE <input type="checkbox"/>
6. State Oil & Gas Lease No.
7. Lease Name or Unit Agreement Name San Juan 30-6 Unit
8. Well Number 463S
9. OGRID Number 14538
10. Pool name or Wildcat Basin Fruitland Coal

SUNDRY NOTICES AND REPORTS ON WELLS
(DO NOT USE THIS FORM FOR PROPOSALS TO DRILL OR TO DEEPEN OR PLUG BACK TO A
DIFFERENT RESERVOIR. USE "APPLICATION FOR PERMIT" (FORM C-101) FOR SUCH
PROPOSALS.)

1. Type of Well:
Oil Well ☐ Gas Well ☒ Other

2. Name of Operator
Burlington Resources Oil & Gas Company LP

3. Address of Operator
3401 E. 30th Street, Farmington, NM 87402

4. Well Location
Unit Letter I : 1550 feet from the South line and 1115 feet from the East line
Section 13 Township 30N Range 7W NMPM Rio Arriba County, NM

11. Elevation (Show whether DR, RKB, RT, GR, etc.)

Pit or Below-grade Tank Application (For pit or below-grade tank closures, a form C-144 must be attached)

Pit Location: UL I Sect 13 Twp 30N Rng 7W Pit type New Depth to Groundwater <50' Distance from nearest fresh water
well >1000' Distance from nearest surface water >1000' Below-grade Tank Location UL Sect Twp Rng ;
 feet from the line and feet from the line

12. Check Appropriate Box to Indicate Nature of Notice, Report or Other Data

NOTICE OF INTENTION TO:

PERFORM REMEDIAL WORK ☐ PLUG AND ABANDON ☐

TEMPORARILY ABANDON ☐ CHANGE PLANS ☐

PULL OR ALTER CASING ☐ MULTIPLE COMPLETION ☐

OTHER: New Drill Pit ☒

SUBSEQUENT REPORT OF:

REMEDIAL WORK ☐ ALTERING CASING ☐

COMMENCE DRILLING OPNS. ☐ PLUG AND ABANDONMENT ☐

CASING TEST AND CEMENT JOB ☐

OTHER: ☐

13. Describe proposed or completed operations. (Clearly state all pertinent details, and give pertinent dates, including estimated date of starting any proposed work). SEE RULE 1103. For Multiple Completions: Attach wellbore diagram of proposed completion or recompletion.

Burlington Resources proposes to construct a new drill pit. The new drill pit will be a lined pit as detailed in Burlington's general pit construction plan dated April 26, 2004 on file at the NMOCD office.

I hereby certify that the information above is true and complete to the best of my knowledge and belief. I further certify that any pit or below-grade tank has been/will be constructed or closed according to NMOCD guidelines ☐ a general permit ☒ or an (attached) alternative OCD-approved plan ☐.

SIGNATURE Cassady Harraden TITLE Regulatory Specialist DATE 5/10/04

Type or print name Cassady Harraden E-mail address: charraden@br-inc.com Telephone No. 326-9700

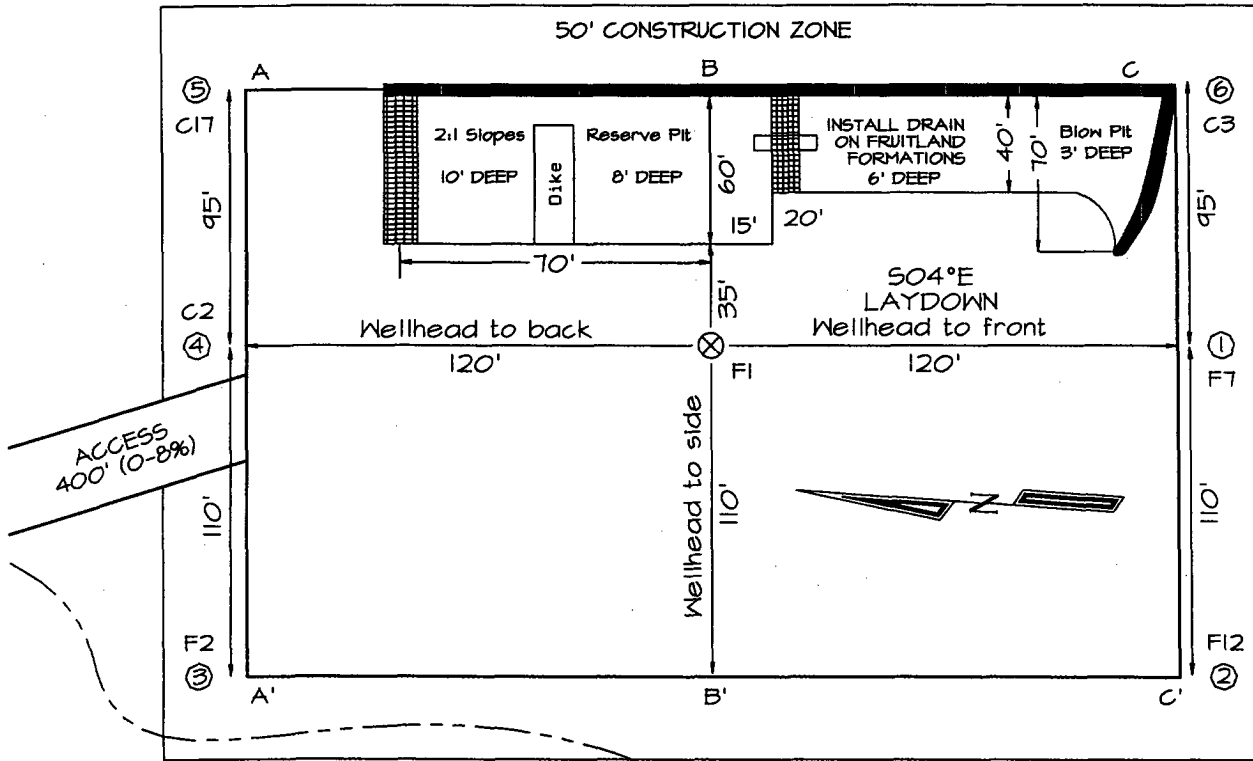
(This space for State use)

APPROVED BY TITLE DATE

Conditions of approval, if any:

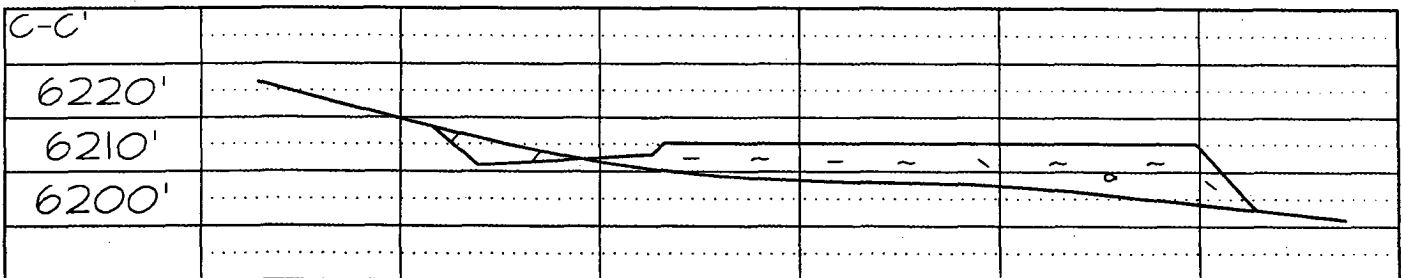
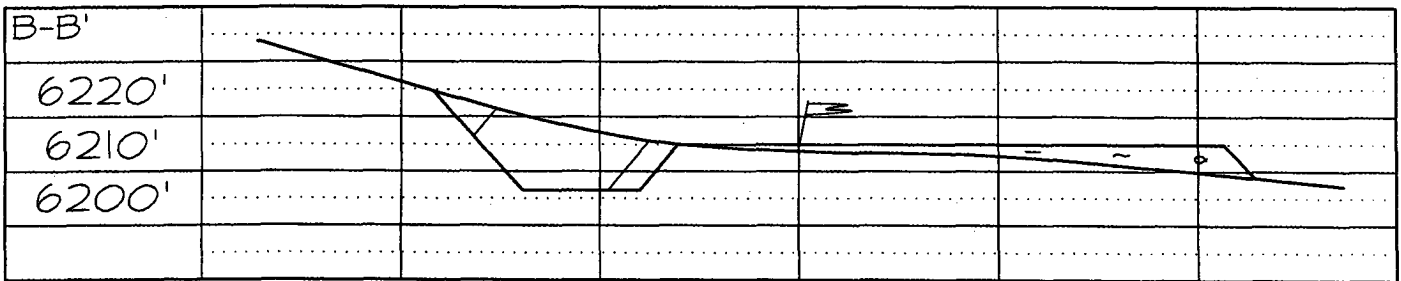
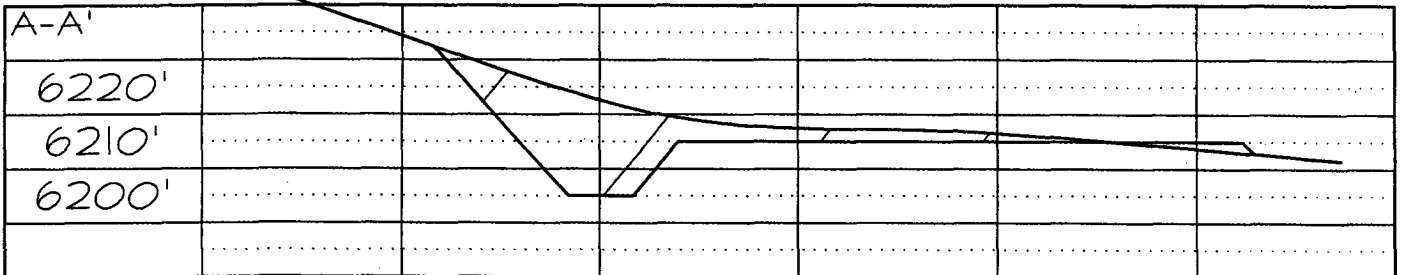
1550' FSL & 1115' FEL, SECTION 13, T30N, R7W, NMPM, RIO ARriba COUNTY, NM
GROUND ELEVATION: 6209' DATE: OCTOBER 10, 2003

205' X 240' 305' X 340' = 2.38 ACRES



LATITUDE: 36°48'35"
LONGITUDE: 107°30'59"
DATUM: NAD1927

Reserve Pit Dike: to be 8' above Deep side (overflow - 3' wide and 1' above shallow side).
Blow Pit: overflow pipe halfway between top and bottom and to extend over plastic liner and into blow pit.



Note: Contractor should call One-Call for location of any marked or unmarked buried pipelines or cables on well pad and/or access road at least two (2) working days prior to construction