

UNITED STATES
DEPARTMENT OF THE INTERIOR
BUREAU OF LAND MANAGEMENT

RECEIVED

APPLICATION FOR PERMIT TO DRILL, DEEPEN, OR PLUG BACK

1a. Type of Work DRILL	5. Lease Number NM-014227 Unit Reporting Number Farmington, NM	
1b. Type of Well GAS	6. If Indian, All. or Tribe	
2. Operator BURLINGTON RESOURCES Oil & Gas Company	7. Unit Agreement Name San Juan 32-9 Unit	
3. Address & Phone No. of Operator PO Box 4289, Farmington, NM 87499 (505) 326-9700	8. Farm or Lease Name San Juan 32-9 Unit 9. Well Number #301S	
4. Location of Well 875' FSL, 1195' FEL Latitude 36° 59.6523'N, Longitude 107° 49.7982'W	10. Field, Pool, Wildcat Basin Fruitland Coal 11. Sec., Twn, Rge, Mer. (NMPM) P Sec. 12, T32N, R10W API # 30-045- 32251	
14. Distance in Miles from Nearest Town 24.8 miles to the intersection of Hwy 550 and Hwy 173 in Aztec, NM	12. County San Juan	13. State NM
15. Distance from Proposed Location to Nearest Property or Lease Line 875'		
16. Acres in Lease	17. Acres Assigned to Well 335.52 ALL	
18. Distance from Proposed Location to Nearest Well, Drig, Compl, or Applied for on this Lease 2060'		
19. Proposed Depth 3692'	20. Rotary or Cable Tools Rotary	
21. Elevations (DF, FT, GR, Etc.) 6860' GR	22. Approx. Date Work will Start	
23. Proposed Casing and Cementing Program See Operations Plan attached		
24. Authorized by: <u>Joni Clark</u> Regulatory/Compliance Specialist	<u>2/26/04</u> Date	

PERMIT NO.

APPROVAL DATE

APPROVED BY D. Montoya

TITLE AFM

DATE 6-3-04

Archaeological Report attached

Threatened and Endangered Species Report attached

NOTE: This format is issued in lieu of U.S. BLM Form 3160-3

Title 18 U.S.C. Section 1001, makes it a crime for any person knowingly and willfully to make to any department or agency of the United States any false, fictitious or fraudulent statements or presentations as to any matter within its jurisdiction.

DISTRICT I
1625 N. French Dr., Hobbs, N.M. 88240

DISTRICT II
611 South First, Artesia, N.M. 88210

DISTRICT III
1000 Rio Brazos Rd., Aztec, N.M. 87410

DISTRICT IV
2040 South Pacheco, Santa Fe, NM 87505

State of New Mexico
Energy, Minerals & Natural Resources Department

Form C-102
Revised August 15, 2000

OIL CONSERVATION DIVISION

2040 South Pacheco
Santa Fe, NM 87505

Submit to Appropriate District Office
State Lease - 4 Copies
Fee Lease - 3 Copies

☐ AMENDED REPORT

WELL LOCATION AND ACREAGE DEDICATION PLAT

*API Number 30-049-32251	*Pool Code 71629	*Pool Name Basin Fruitland Coal
*Property Code 7473	*Property Name SAN JUAN 32-9 UNIT	*Well Number 301S
*OGRID No. 14538	*Operator Name BURLINGTON RESOURCES OIL AND GAS COMPANY LP	*Elevation 6860'

¹⁰ Surface Location

UL or lot no.	Section	Township	Range	Lot Idn	Feet from the	North/South line	Feet from the	East/West line	County
P	12	32-N	10-W		875'	SOUTH	1195'	EAST	SAN JUAN

¹¹ Bottom Hole Location If Different From Surface

UL or lot no.	Section	Township	Range	Lot Idn	Feet from the	North/South line	Feet from the	East/West line	County
*Dedicated Acres FTC All 335.52			*Joint or Infill		*Consolidation Code		*Order No.		

NO ALLOWABLE WILL BE ASSIGNED TO THIS COMPLETION UNTIL ALL INTERESTS HAVE BEEN CONSOLIDATED
OR A NON-STANDARD UNIT HAS BEEN APPROVED BY THE DIVISION

16			
COLORADO/NEW MEXICO STATE LINE			
LOT 8	LOT 7	12	LOT 6
SF-079143			
N 00-00-27 E 2741.12'			
LOT 9	LOT 10	LOT 11	LOT 12
NM-014227			
LAT: 36°58.6523' N. LONG: 107°49.7982' W. NAD 1927			
N 89-17-05 W 2502.04'			

17 OPERATOR CERTIFICATION

I hereby certify that the information contained herein is true and complete to the best of my knowledge and belief.

Joni Clark
Signature
Printed Name
Regulatory Specialist
Title
1-30-04
Date

18 SURVEYOR CERTIFICATION

I hereby certify that the well location shown on this plat was plotted from field notes of actual surveys made by me or under my supervision, and that the same is true and correct to the best of my belief.

Date of Survey
Signature and Seal of Professional Surveyor
GLEN M. BUSSELL
15703
Certificate Number 15703

OPERATIONS PLAN

Well Name: San Juan 32-9 Unit # 301S
Location: 875' FSL, 1195' FEL Section 12, T-32-N, R-10-W
Latitude 36° 59.6523'N, Longitude 107° 49.7982'W
San Juan, NM
Formation: Basin Fruitland Coal
Elevation: 6860'GR

Formation:	Top	Bottom	Contents
Surface	San Jose	1887'	
Ojo Alamo	1887'	1922'	aquifer
Kirtland	1922'	3252'	
Fruitland Coal	3252'	3605'	gas
Intermediate TD	3297'		
B/Basal Coal	3605'	3607'	gas
Pictured Cliffs	3607'		
Total Depth	3692'		

Logging Program: none
Mudlog: from 7" to 3692'
Coring Program: none

Mud Program:

Interval	Type	Weight	Vis.	Fluid Loss
0- 120'	Spud Mud/Air/Air Mist	8.4-9.0	40-50	no control
120-3297'	Non-dispersed	8.4-9.0	30-60	no control
3297-3692'	Air/Mist			

Casing Program (as listed, the equivalent, or better):

Hole Size	Depth Interval	Csg.Size	Wt.	Grade
12 1/4"	0' - 120'	9 5/8"	32.3#	H-40
8 3/4"	0' - 3297'	7"	20.0#	J-55
6 1/4"	3297' - 3692'	open hole		

Alternate Casing Program (as listed, the equivalent, or better):

Hole Size	Depth Interval	Csg.Size	Wt.	Grade
12 1/4"	0' - 120'	9 5/8"	32.3#	H-40
8 3/4"	0' - 3297'	7"	20.0#	J-55
6 1/4"	3257' - 3692'	5 1/2"	15.5#	J-55

Tubing Program:

0' - 3692'	2 3/8"	4.7#	J-55
------------	--------	------	------

Float Equipment: 9 5/8" surface casing - saw tooth guide shoe. Centralizers will be run in accordance with Onshore Order #2.

7" intermediate casing - guide shoe and self-fill float collar. Standard centralizers run every other joint above shoe. Two turbolizing type centralizers - one below and one into the base of the Ojo Alamo @ 1922'. Standard centralizers thereafter every fourth joint up to the base of the surface pipe.

Wellhead Equipment: 9 5/8" x 7" x 2 3/8" x 11" 2000 psi xmas tree assembly.

Cementing:

9 5/8" surface casing -

Pre-Set Drilled Cement with 23 sx Type I, II cement with 20% flyash mixed at 14.5 ppg, 1.61 cu ft per sack yield. (37 cu ft of slurry, bring cement to surface) Wait on cement for 24 hours for pre-set holes before pressure testing or drilling out from under surface.

Conventionally Drilled

Cement with 88 sx Type III cement with 0.25 pps Celloflake, 3% CaCl. (113 cu ft of slurry, 200% excess, bring cement to surface) Wait on cement for 8 hrs for conventionally set holes before pressure testing or drilling out from under surface.

WOC until cement establishes 250 psi compressive strength prior to NU of BOPE.

7" intermediate casing - lead w/206 sacks Premium Lite with 3% calcium chloride, 5 pps LCM-1, and 1/4#/sack flocele, 0.4% FL-52, & 0.4% SMS. Tail with 90 sacks Type III cmt with 1% calcium chloride, 1/4#/sack flocele and 0.2% FL-52. (598 cu.ft., 50% excess to circulate to surface).

5 1/2" liner - will not be cemented if run.

Note: If open hole logs are run, cement volumes will be based on 25% excess over caliper volumes.

BOP and tests:

Surface to intermediate TD - 11" 2000 psi (minimum) double gate BOP stack (Reference Figure #1). Prior to drilling out surface casing, test rams to 600#/30 min.

Intermediate TD to Total Depth - 7 1/6" 2000 psi (minimum) double gate BOP stack (Reference Figure #2). Prior to drilling out intermediate casing, test blind rams and casing to 1500 psi for 30 minutes; all pipe rams and casing to 1500 psi for 30 minutes each.

From surface to ^{7"}TD - choke manifold (Reference Figure #3).

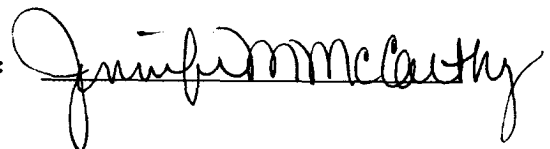
Pipe rams will be actuated at least once each day and blind rams actuated once each trip to test proper functioning. An upper kelly cock valve with handle and drill string safety valves to fit each drill string will be maintained and available on the rig floor.

Additional information:

- * The Fruitland Coal formation will be completed.
- * Anticipated pore pressure for the Fruitland is less than 500 psi.
- * This gas is dedicated.
- * All of Section 12 is dedicated to the Fruitland Coal.

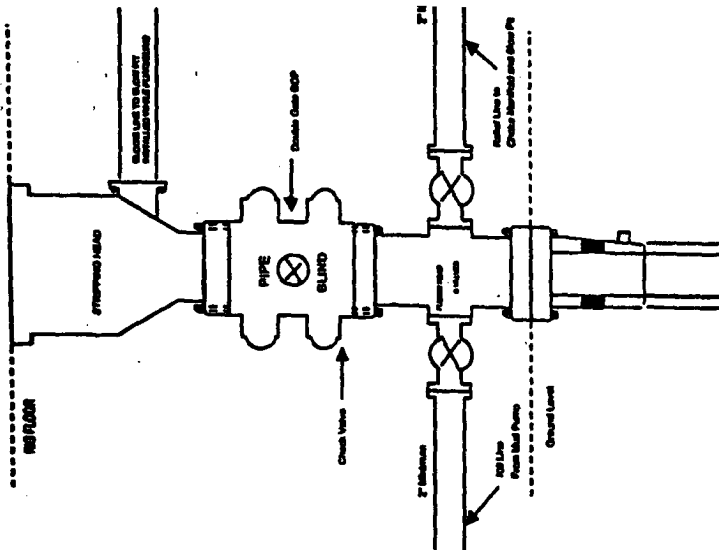
Date: 3-1-04

Drilling Engineer:



BURLINGTON RESOURCES

Completion/Workover Rig BOP Configuration 2,000 psi System

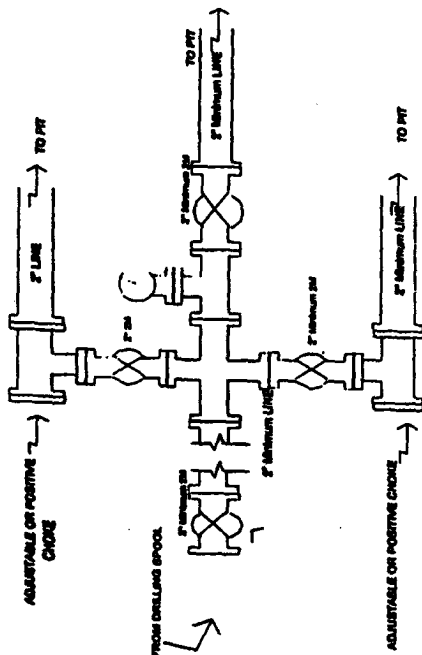


Minimum BOP installation for all Completion/Workover Operations. 7-1/16" bore, 2000 psi minimum working pressure double gate BOP to be equipped with blind and pipe rams. A stripping head to be installed on the top of the BOP. All BOP equipment is 2000 psi working pressure or greater excluding 500 psi stripping head.

Figure #2

BURLINGTON RESOURCES

Drilling Rig Choke Manifold Configuration 2000 psi System

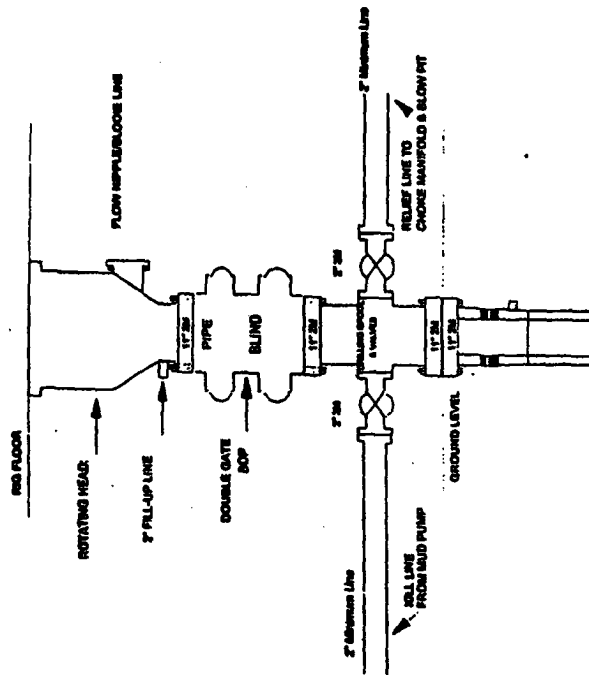


Choke manifold installation from Surface Casing Point to Total Depth. 2,000psi working pressure equipment with two chokes.

Figure #3

Burlington Resources

Drilling Rig 2000 psi System



BOP installation from Surface Casing Point to Total Depth. 11" Bore 10" Minimum 2000 psi working pressure double gate BOP to be equipped with blind and pipe rams. A stripping head on top of BOP to be installed. All BOP equipment is 2,000 psi working pressure or greater.

Figure #1

**UNITED STATES
DEPARTMENT OF THE INTERIOR
BUREAU OF LAND MANAGEMENT**

Sundry Notices and Reports on Wells

RECEIVED

2004 APR 27 PM 3:47

Lease Number
NM-0142271. Type of Well
GAS

6. 070 FARMINGTON, NM

If Indian, All. or
Tribe Name

2. Name of Operator

**BURLINGTON
RESOURCES**

OIL & GAS COMPANY

7. Unit Agreement Name

3. Address & Phone No. of Operator

PO Box 4289, Farmington, NM 87499 (505) 326-9700

8. Well Name & Number

San Juan 32-9 Unit #301S

4. Location of Well, Footage, Sec., T, R, M

875' FSL, 1195' FEL, Sec.12, T32N, R10W, NMPM

9. API Well No.

30-045-

10. Field and Pool

Basin Fruitland Coal

County and State

San Juan Co, NM

12. CHECK APPROPRIATE BOX TO INDICATE NATURE OF NOTICE, REPORT, OTHER DATA

Type of Submission

☒ Notice of Intent☐ Subsequent Report☐ Final Abandonment

Type of Action

☐ Abandonment☐ Recompletion☐ Plugging Back☐ Casing Repair☐ Altering Casing☐ Other☒ Change of Plans☐ New Construction☐ Non-Routine Fracturing☐ Water Shut off☐ Conversion to Injection

13. Describe Proposed or Completed Operations

The BOP configuration has been revised for the subject well according to the following and attached diagram:

BOP and tests:

Surface to intermediate TD - 11" 2000 psi (minimum) double gate BOP stack (Reference Figure #1). Prior to drilling out surface casing, test BOPE to 600 psi for 30 min.

Intermediate TD to Total Depth - 7 1/6" 2000 psi (minimum) completion BOP stack (Reference Figure #2). Prior to drilling out intermediate casing, test BOPE and casing to 1500 psi for 30 minutes.

From surface to 7" TD - a choke manifold will be installed in accordance with Onshore Order No. 2 (Reference Figure #3). When the cavitation completion rig drills the production hole, the completion rig configuration will be used (Reference Figure #4).

Pipe rams will be actuated at least once each day and blind rams actuated once each trip to test proper functioning. An upper kelly cock valve with handle and drill string safety valves to fit each drill string will be maintained and available on the rig floor.

14. I hereby certify that the foregoing is true and correct.

Signed Tammy Wimsatt Title Regulatory Specialist Date 04/013/04
fsb

(This space for Federal or State Office use)

APPROVED BY [Signature] Title AFM Date 6-3-04

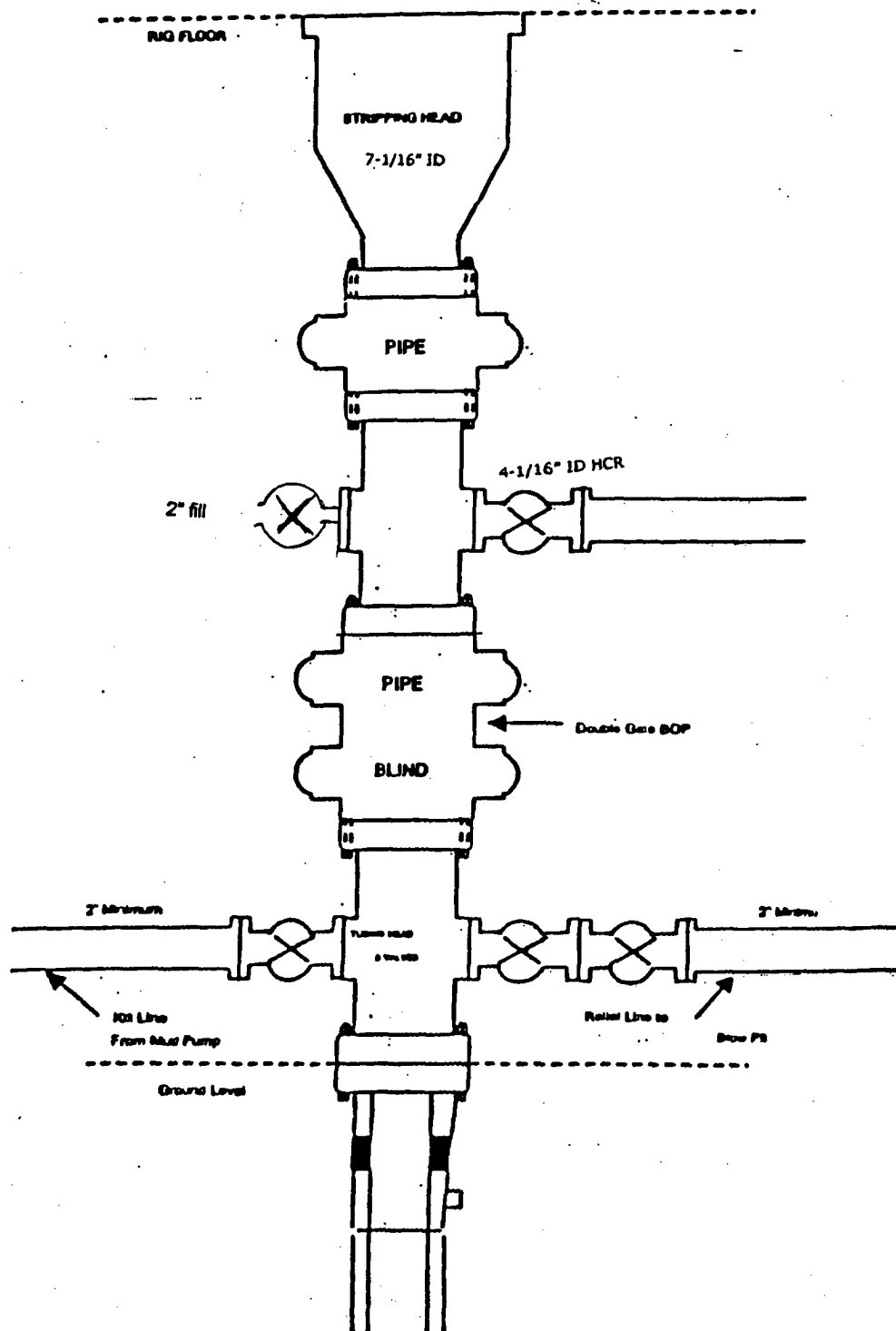
CONDITION OF APPROVAL, if any:

Title 18 U.S.C. Section 1001, makes it a crime for any person knowingly and willfully to make to any department or agency of the United States any false, fictitious or fraudulent statements or representations as to any matter within its jurisdiction.

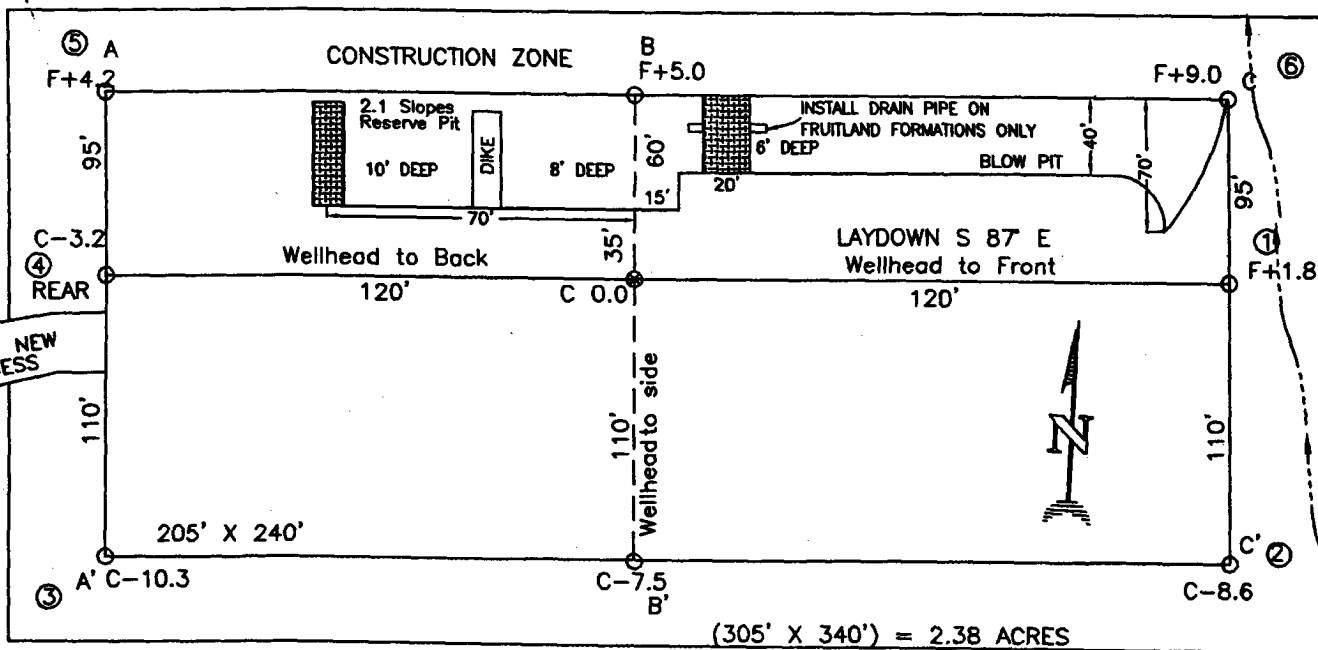
NMOC

BURLINGTON RESOURCES

Figure #4
Cavitation Rig
BOP Configuration
2,000 psi Minimum System



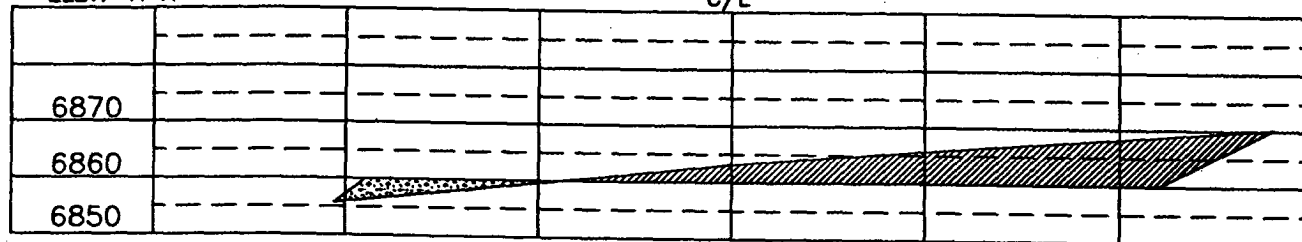
BURLINGTON RESOURCES OIL & GAS COMPANY LP
 SAN JUAN 32-9 UNIT #301S, 875' FSL 1195' FEL
 SECTION 12, T-32-N, R-10-W, N.M.P.M., SAN JUAN COUNTY, NEW MEXICO
 GROUND ELEVATION: 6860', DATE: SEPTEMBER 16, 2003



RESERVE PIT DIKE: TO BE 8' ABOVE DEEP SIDE (OVERFLOW - 3' WIDE AND 1' ABOVE SHALLOW SIDE).
 BLOW PIT: OVERFLOW PIPE HALFWAY BETWEEN TOP AND BOTTOM AND TO EXTEND OVER PLASTIC LINER AND INTO BLOW PIT.

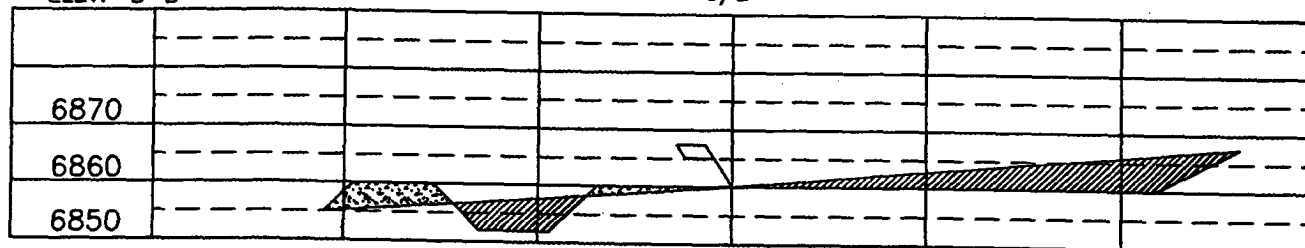
ELEV. A-A'

C/L

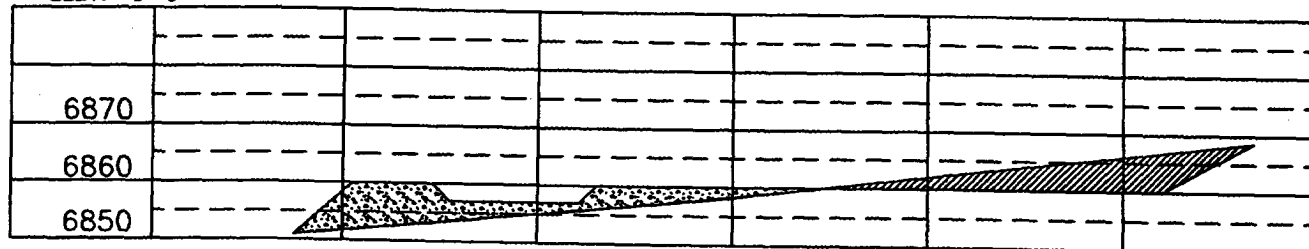


ELEV. B-B'

C/L



ELEV. C-C'



NOTE: VECTOR SURVEYS IS NOT LIABLE FOR UNDERGROUND UTILITIES OR PIPELINES.
 CONTRACTOR SHOULD CALL ONE-CALL FOR LOCATION OF ANY MARKED OR UNMARKED BURIED PIPELINES OR CABLES
 ON WELL PAD AND OR ACCESS ROAD AT LEAST TWO (2) WORKING DAYS PRIOR TO CONSTRUCTION.

BURLINGTON RESOURCES

SAN JUAN DIVISION

Released, June 10, 2004

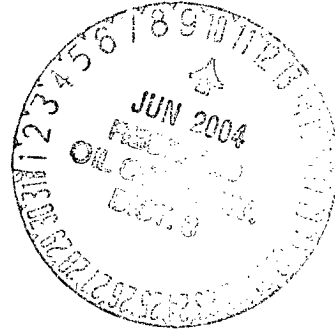
March 19, 2004

T H McElvain Oil & Gas L TD
Partnership
1050 17th Street, STE. 1800
Denver, Colorado 80265

st

(Certified Mail – Return Receipt Requested)

Re: San Juan 32-9 Unit 301S
Basin Fruitland Coal
875'FSL, 1195'FEL Section 12, T-32-N, R-10-W
San Juan County, New Mexico



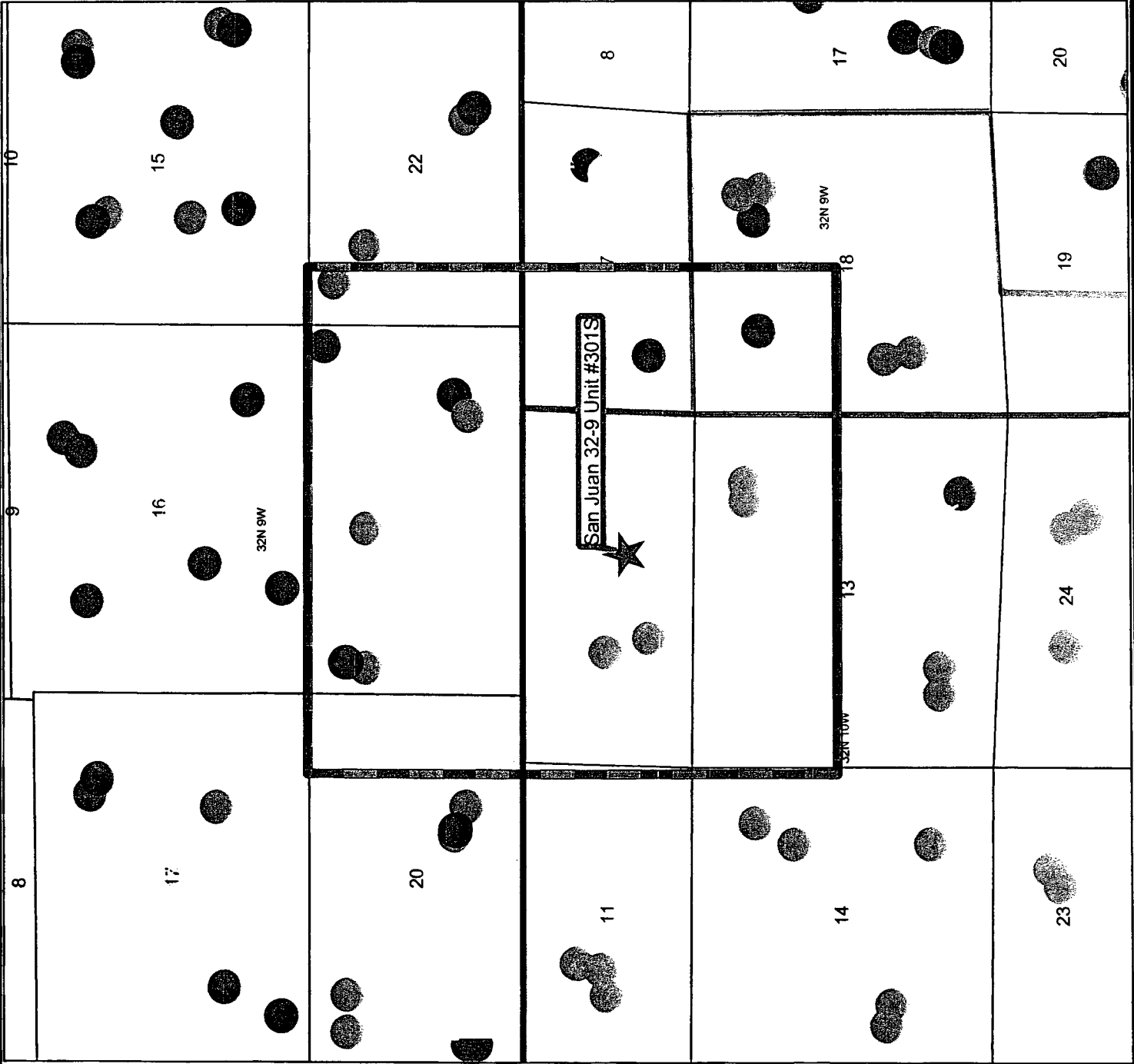
To the Affected Persons:

Burlington Resources Oil & Gas Company LP is submitting the enclosed Application for Permit to Drill to the appropriate regulatory agency(s) for approval. This well is located inside the High Productivity Area of the Basin-Fruitland Coal Pool as indicated on the attached plat. Notice is being made pursuant to New Mexico Oil Conservation Commission Order R-8768-F dated July 17, 2003.

The affected parties have twenty (20) days from receipt of this notice in which to file with the District Office of the New Mexico Oil Conservation Division written objection to the proposed Application for Permit to Drill.

Sincerely,

Joni Clark
Regulatory Specialist



Legend

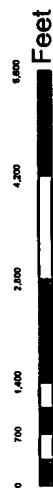
Current Operator

- UNKNOWN
- BP AMERICA
- AZTEC OIL & GAS COMPANY
- BURLINGTON RESOURCES
- COLEMAN OIL & GAS INCORPORATED
- CONOCOPHILLIPS
- ENERGEN RESOURCES CORPORATION
- MCELVAINT H OIL & GAS PROPERTIES
- TENNECO OIL COMPANY

Current Operator

- UNKNOWN
- ARCO OIL & GAS CORPORATION
- BP AMERICA
- BURLINGTON RESOURCES
- FOURSTAR
- FRITZLER RESOURCES INCORPORATED
- MURCHISON
- PETROCORP
- QUESTAR EXPLORATION & PRODUCTION CO
- RED WILLOW PRODUCTION COMPANY

**BURLINGTON
RESOURCES**



1:71,167,736 - 1" equals 5,930,645'

GCS Assumed Geographic 1

BURLINGTON RESOURCES

San Juan

San Juan 32-9 Unit #301S

T32N-R10W

Section 12

Prepared By: *hmc* Date: 3/18/2004

File Number: Revised Date: 3/18/2004

File Name: c:\data\hmc\Projects\HPA Training\HPA Training.mxd

2. Article Number



7110 6605 9590 0008 1204

1. Article Addressed to:

CONOCOPHILLIPS COMPANY
ATTN CHIEF LANDMAN SAN JUAN/ROCKIES
PO BOX 2197

HOUSTON, TX 77252-2197

3/18/2004 2:20 PM

Code: HPA INFILL

COMPLETE THIS SECTION ON DELIVERY

A. Signature

X *[Signature]*☐ Agent
☐ Addressee

B. Received by (Printed Name)

C. Date of Delivery

MAR 23 2004

D. Is delivery address different from item 1? ☐ Yes
If YES enter delivery address below: ☐ No

3. Service Type

☒ Certified

4. Restricted Delivery? (Extra Fee)

☐ Yes

PS Form 3811

Domestic Return Receipt

SJ 32-9 3015.

2. Article Number



7110 6605 9590 0008 1211

1. Article Addressed to:

T H MCELVAIN OIL & GAS LTD
PARTNERSHIP
1050 17TH STREET, STE 1800

DENVER, COLORADO 80265

3/18/2004 2:40 PM

COMPLETE THIS SECTION ON DELIVERY

A. Signature

X *M. Johnson*☐ Agent
☐ Addressee

B. Received by (Printed Name)

C. Date of Delivery

3/22/04

D. Is delivery address different from item 1? ☐ Yes
If YES enter delivery address below: ☐ No

3. Service Type

☒ Certified

4. Restricted Delivery? (Extra Fee)

☐ Yes

PS Form 3811

Domestic Return Receipt

SJ 32-9 Unit 3015