

Submit 3 Copies  
to Appropriate  
District Office

State of New Mexico  
Energy, Minerals and Natural Resources Department

Form C-103  
Revised 1-1-89

DISTRICT I  
P.O. Box 1980, Hobbs, NM 88240

DISTRICT II  
P.O. Drawer DD, Artesia, NM 88210

DISTRICT III  
1000 Rio Brazos Rd., Aztec, NM 87410

OIL CONSERVATION DIVISION

2040 Pacheco St.  
Santa Fe, NM 87505

WELL API NO.  
30-045-30096

Indicate Type of Lease  
STATE ☒ FEE ☐

6. State Oil & Gas Lease No.  
VA 235

SUNDRY NOTICES AND REPORTS ON WELLS

(DO NOT USE THIS FORM FOR PROPOSALS TO DRILL OR TO DEEPEN OR PLUG BACK TO A  
DIFFERENT RESERVOIR. USE "APPLICATION FOR PERMIT  
(FORM C-101) FOR SUCH PROPOSALS)

1. Type of Well:  
OIL WELL ☐ GAS WELL ☐ OTHER SALT WATER DISPOSAL

2. Name of Operator  
COLEMAN OIL & GAS, INC.

8. Well No.  
#1

3. Address of Operator  
PO DRAWER 3337, FARMINGTON NM 87499-3337

9. Pool name or Wildcat  
BLANCO MESA VERDE

4. Well Location  
Unit Letter K : 2220' Feet From The SOUTH Line and 1680' Feet From The WEST Line  
Section 16 Township 26N Range 12W NMPM SAN JUAN County

10. Elevation (Show whether DF, RKB, RT, GR, etc.)  
6016' GR

Check Appropriate Box to Indicate Nature of Notice, Report, or Other Data

11. NOTICE OF INTENTION TO:

PERFORM REMEDIAL WORK ☐ PLUG AND ABANDON ☐  
TEMPORARILY ABANDON ☐ CHANGE PLANS ☐  
PULL OR ALTER CASING ☐  
OTHER: SEE BELOW ☒

SUBSEQUENT REPORT OF:

REMEDIAL WORK ☐ ALTERING CASING ☐  
COMMENCE DRILLING OPNS. ☐ PLUG AND ABANDONMENT ☐  
CASING TEST AND CEMENT JOB ☐  
OTHER: ☐

12. Describe Proposed or Completed Operations (Clearly state all pertinent details, and give pertinent date, including estimated date of starting any proposed work) SEE RULE 1103.

REQUEST PERMISSION TO PERFORM A "STEP RATE TEST" AS PER ATTACHED PROCEDURE DATED 5-27-04.

NOTIFY AZTEC OCD  
IN TIME TO WITNESS

Schedule for witness with Bruce Martin

I hereby certify that the information above is true and complete to the best of my knowledge and belief.

SIGNATURE Wendy Rogers TITLE PRODUCTION ACCT. DATE 06/09/04  
TYPE OR PRINT NAME WENDY ROGERS TELEPHONE NO. (505) 327-0356

(This space for State Use)

APPROVED BY Charles R. TITLE DEPUTY OIL & GAS INSPECTOR, DIST. III DATE JUN 10 2004

CONDITIONS OF APPROVAL, IF ANY:

# Coleman Oil & Gas

## Step Rate Test Procedure

May 27, 2004

---

Well: Cowsaround SWD No. 1  
Location: 220' fsl & 1680' fwl  
Sec 16 T26N R12W  
San Juan County, New Mexico

Field: Blanco Mesa Verde  
Elevation: 6016' GR  
6026' RKB  
By: Brian Simmons

### Background Information

1. The rig up diagram and mechanical configuration of the wellbore are attached.
2. The well was fraced in two stages as follows:

	Total Fluid Gallons	Total Sand #	Rate BPM	Pressure psi	ISIP psi
Point Lookout & some Menefee	46998	65000	4~15	1300-3500	1030
Menefee & Cliffhouse	43764	65000	4~15	1300-3500	926

### Procedure

#### *Run Bottom Hole Pressure Monitor*

1. Notify NMOCD minimum of 24 hours prior to testing.
2. Shut in well 24 hrs prior to test.
3. Move-in, rig up Slickline truck.
4. RIH w/ sinker to tag for TD.
5. POOH
6. RIH w/ Electronic pressure gauge and set at  $\pm 2000'$  KB. (Top of perms)
7. Fill 3 tanks on location w/ produced water.

#### *Perform Step Rate Test*

1. Install pressure gauges on bradenhead and casinghead.
2. MIRU pump truck.
3. Install paper chart recorded on pump discharge to record surface pressure and rate.
4. Load hole w/ produced water.
5. Begin step rate test at 0.5 BPM. Three steps below current pressure limit of 400 psi must be established. Hold each step for 30 minutes. Increase rate in increments of 0.5 BPM up to an estimated 11.0 BPM. Three steps above breakover point must be established for a valid test. Continue pumping in

0.5 BPM increments if the required data is not obtained by the 11.0 BPM step.

6. Record casing and bradenhead pressures at each step.
7. Record ISIP at end of test.
8. Allow 60-minute fall of period.
9. Rig Down pump.
10. Retrieve Bottom hole pressure tool, Rig down slickline.
11. Put well on to injection.
12. Provide all pressure/rate charts, field notes and bottom hole pressure data to Mike Hanson at the COG office.

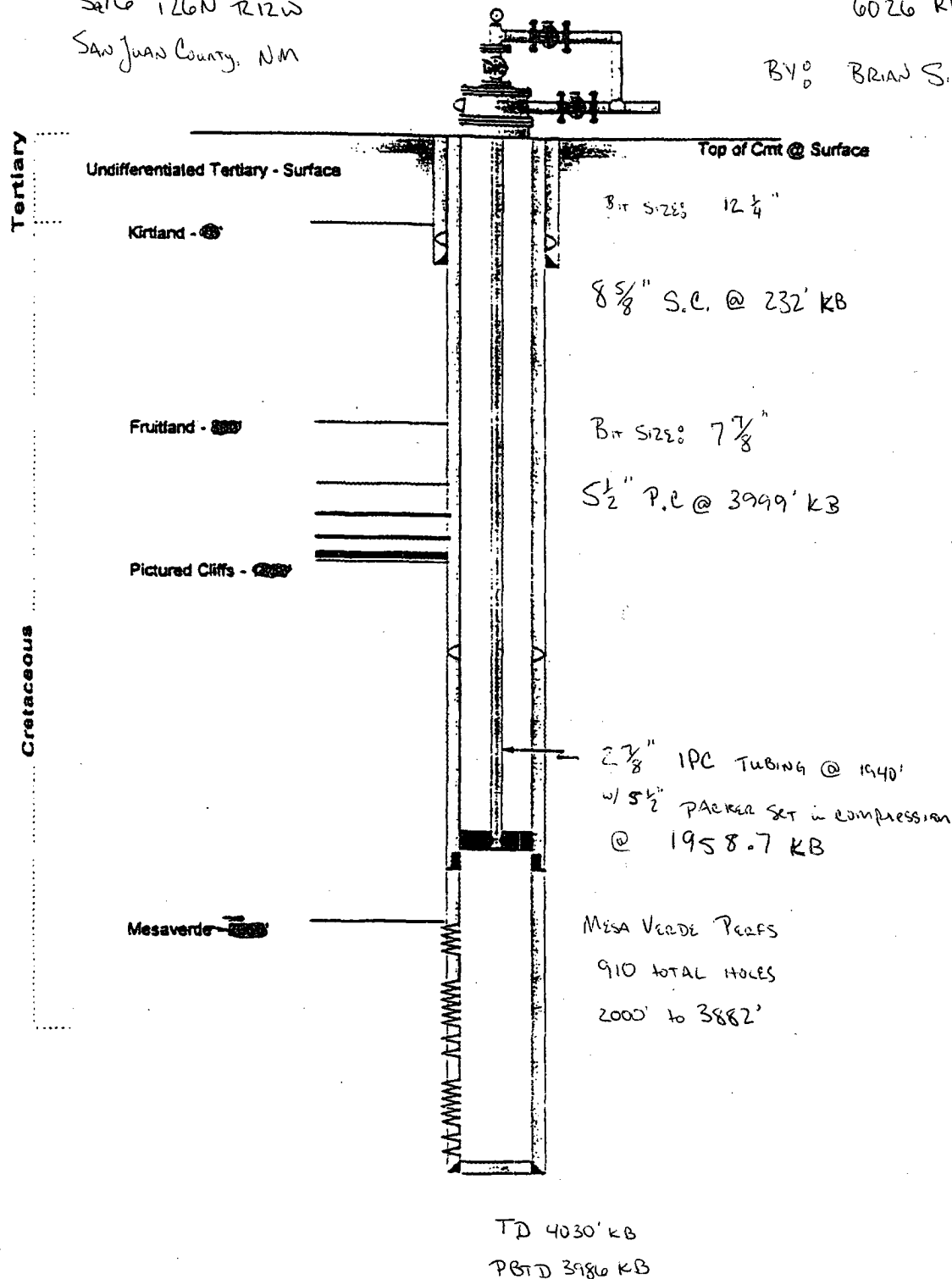
# COLEMAN OIL & GAS

COVS AROUND SWD #1

LOCATION: 2220' fsl & 1680' fwi  
 S16 T26N R12W  
 SAN JUAN COUNTY, NM

ELEVATION: 6016' GR  
 6026' RKB

BY: BRIAN SIMMONS



\* NOTE: KB 10' above GL

# COLEMAN OIL & GAS

## Step Rate Test, Rig Up Diagram

COWSAROUND SWD No. 1

LOCATION:

220' fs1 & 1680' fwl

Sec 16 T26N R12W

SAN JUAN Co, NM

By: BRIAN SIMMONS

Slickline to Bottom Hole Pressure Tool

Tubing Pressure Gauge

Casing Pressure Gauge

Bradenhead Pressure Gauge

Flex Hose from Injection Pump  
Pressure & Flow Chart Connected to  
Pump Discharge

