

UNITED STATES
DEPARTMENT OF THE INTERIOR
BUREAU OF LAND MANAGEMENT

FORM APPROVED
OMB No. 1004-0136
Expires November 30, 2000

APPLICATION FOR PERMIT TO DRILL OR REENTER

1a. Type of Work: ☒ DRILL ☐ REENTER

1b. Type of Well: ☐ Oil Well ☒ Gas Well ☐ Other ☒ Single Zone ☐ Multiple Zone

2. Name of Operator
CONOCOPHILLIPS COMPANY

Contact: PATSY CLUGSTON
E-Mail: pclugs@ppco.com

3a. Address
5525 HWY.
FARMINGTON, NM 87401

3b. Phone No. (include area code)
Ph: 505.599.3454
Fx: 505-599-3442

4. Location of Well (Report location clearly and in accordance with any State requirements. *)
At surface SWSE 500FSL 1900FEL 36.74877 N Lat, 107.41367 W Lon
At proposed prod. zone

14. Distance in miles and direction from nearest town or post office*
APPROX. 43 MILES FROM BLOOMFIELD, NM

15. Distance from proposed location to nearest property or lease line, ft. (Also to nearest drig. unit line, if any)

16. No. of Acres in Lease

18. Distance from proposed location to nearest well, drilling, completed, applied for, on this lease, ft.

19. Proposed Depth

21. Elevations (Show whether DF, KB, RT, GL, etc.)
6450 GL

22. Approximate date work will start
04/01/2004

5. Lease Serial No.
NM012698

6. If Indian, Allottee or Tribe Name

7. If Unit or CA Agreement, Name and No.

8. Lease Name and Well No.
SAN JUAN 29-6 UNIT 17C

9. API Well No.

30039 27579

10. Field and Pool, or Exploratory
BLANCO MESAVERDE

11. Sec., T., R., M., or Blk. and Survey or Area

Sec 1 T29N R6W Mer NMP

12. County or Parish
RIO ARRIBA

13. State
NM

17. Spacing Unit dedicated to this well

232.73 E/A

20. BLM/BIA Bond No. on file

ES0085

23. Estimated duration
30 DAYS

24. Attachments

The following, completed in accordance with the requirements of Onshore Oil and Gas Order No. 1, shall be attached to this form:

1. Well plat certified by a registered surveyor.
2. A Drilling Plan.
3. A Surface Use Plan (if the location is on National Forest System Lands, the SUPO shall be filed with the appropriate Forest Service Office).

4. Bond to cover the operations unless covered by an existing bond on file (see Item 20 above).
5. Operator certification
6. Such other site specific information and/or plans as may be required by the authorized officer.

25. Signature
(Electronic Submission)

Name (Printed/Typed)
PATSY CLUGSTON

Date
02/10/2004

Title
AUTHORIZED REPRESENTATIVE

Approved by (Signature)

Name (Printed/Typed)

Date
6/21/04

Title
Acting Field Manager - Minerals

Office

Application approval does not warrant or certify the applicant holds legal or equitable title to those rights in the subject lease which would entitle the applicant to conduct operations thereon.
Conditions of approval, if any, are attached.

Title 18 U.S.C. Section 1001 and Title 43 U.S.C. Section 1212, make it a crime for any person knowingly and willfully to make to any department or agency of the United States any false, fictitious or fraudulent statements or representations as to any matter within its jurisdiction.

Additional Operator Remarks (see next page)

Electronic Submission #27739 verified by the BLM Well Information System
For CONOCOPHILLIPS COMPANY, sent to the Farmington

This action is subject to technical and procedural review pursuant to 43 CFR 3165.9 and appeal pursuant to 43 CFR 3165.4

DRILLING OPERATIONS AUTHORIZED ARE
SUBJECT TO COMPLIANCE WITH ATTACHED
"GENERAL REQUIREMENTS".

** OPERATOR-SUBMITTED ** OPERATOR-SUBMITTED ** OPERATOR-SUBMITTED **

NMOCD

District I
PO Box 1980, Hobbs, NM 88241-1980
District II
PO Drawer 00, Artesia, NM 88211-0719
District III
1000 Rio Brazos Rd., Aztec, NM 87410
District IV
PO Box 2088, Santa Fe, NM 87504-2088

State of New Mexico
Energy, Minerals & Natural Resources Department

OIL CONSERVATION DIVISION
PO Box 2088
Santa Fe, NM 87504-2088

Form C-102
Revised February 21, 1994
Instructions on back
Submit to Appropriate District Office
State Lease - 4 Copies
Fee Lease - 3 Copies

☐ AMENDED REPORT

WELL LOCATION AND ACREAGE DEDICATION PLAT

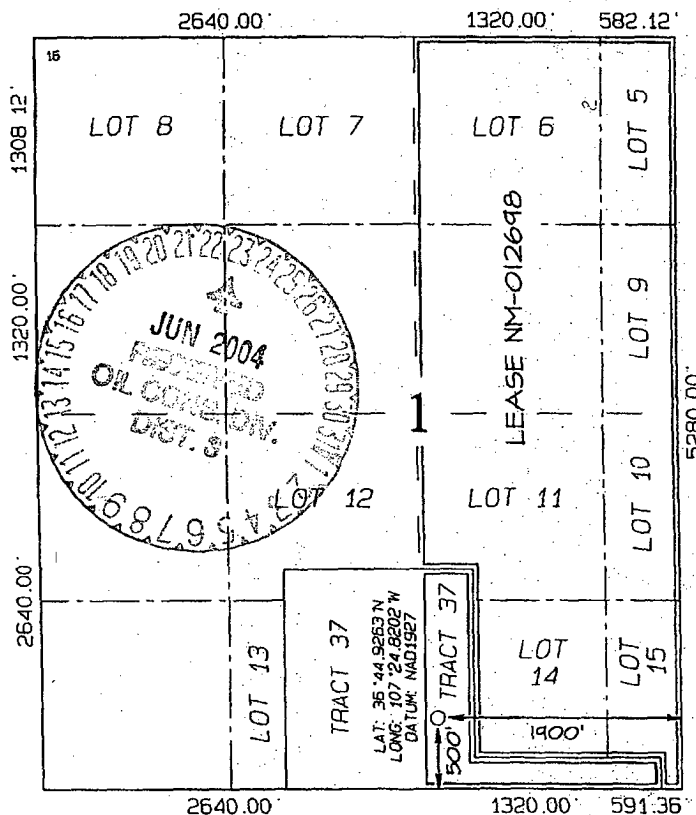
*API Number		*Pool Code	*Pool Name
		72319 / 71599	BLANCO MESAVERDE
*Property Code	*Property Name		*Well Number
31326	SAN JUAN 29-6 UNIT		17C
*OGRID No.	*Operator Name		*Elevation
217R17	CONOCOPHILLIPS COMPANY		6450'

10 Surface Location

UL or lot no.	Section	Township	Range	Lot Idn	Feet from the	North/South line	Feet from the	East/West line	County
0	1	29N	6W		500	SOUTH	1900	EAST	RIO ARriba

11 Bottom Hole Location If Different From Surface

UL or lot no.	Section	Township	Range	Lot Idn	Feet from the	North/South line	Feet from the	East/West line	County
*Dedicated Acres					*Joint or (Int'l)		*Consolidation Code		*Order No.
232.73 Acres - E/2									



NO ALLOWABLE WILL BE ASSIGNED TO THIS COMPLETION UNTIL ALL INTERESTS HAVE BEEN CONSOLIDATED OR A NON-STANDARD UNIT HAS BEEN APPROVED BY THE DIVISION

17 OPERATOR CERTIFICATION

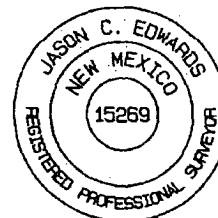
I hereby certify that the information contained herein is true and complete to the best of my knowledge and belief.
Vicki Westby
Signature
Vicki R. Westby
Printed Name
Sr. Analyst
Title
February 4, 2004
Date

18 SURVEYOR CERTIFICATION

I hereby certify that the well location shown on this plat was plotted from field notes of actual surveys made by me or under my supervision, and that the same is true and correct to the best of my belief.

Survey Date: SEPTEMBER 18, 2003

Signature and Seal of Professional Surveyor



Jason C. Edwards
Certificate Number 15269

Additional Operator Remarks:

See attached for Surface Use Plan, Drilling Prognosis, maps, plats (pad & p/l), BOP & cathodic detail.

This well was listed on the 2004 POD as a MV/DK named 17M and the MV penetration proposed at this location. Since this well is not in the DK PA & the DK is on/past the edge of being prospective here and given the fact that this location is also Non-standard for non-PA DK per OCD rules, we have decided to only drill this as a MV single, thus the reason for the name change and reason only MV.

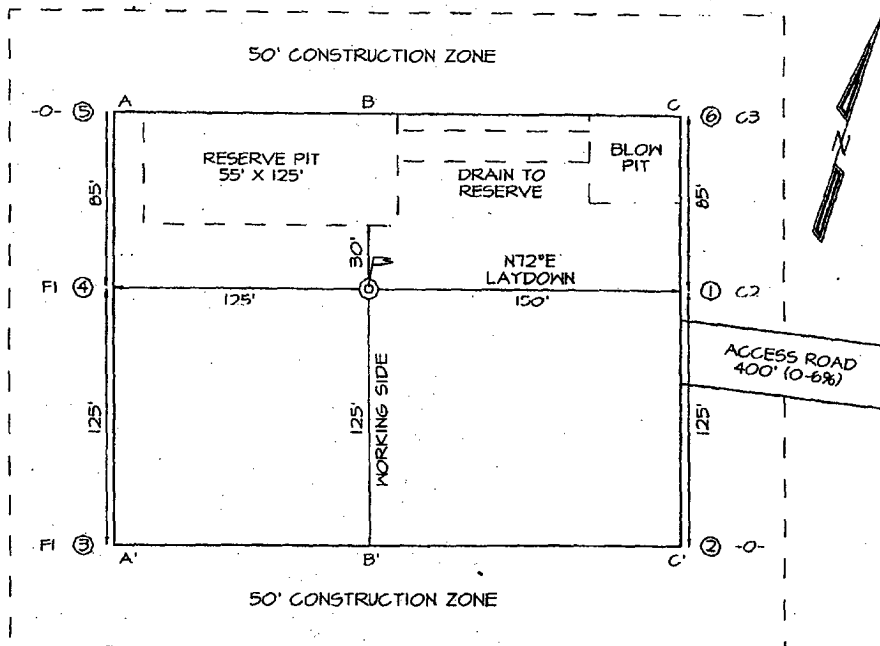
APD/ROW - Williams

LATITUDE: 36.74877° N
LONGITUDE: 107.41367° W

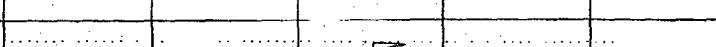
DATE: NAD1927

PLAT NOTE:

SURFACE OWNER
Fee Land: Pat Smith



A-A'						
6460'						
6450'						
6440'						

B-B'							
6460'							
6450'							
6440'							

C-C'						
6460'						
6450'						
6440'						

CONOCOPHILLIPS COMPANY

WELL NAME: San Juan 29-6 Unit #17C (MV)

DRILLING PROGNOSIS

1. Location of Proposed Well: Unit O, 500' FSL & 1900' FEL
Section 1, T29N, R6W
2. Unprepared Ground Elevation: @ 6450' (unprepared)
3. The geological name of the surface formation is San Jose.
4. Type of drilling tools will be rotary.
5. Proposed drilling depth is 5873'.
6. The estimated tops of important geologic markers are as follows:

<u>Nacimiento - 1333'</u>	<u>Cliffhouse - 5228'</u>
<u>Ojo Alamo - 2513'</u>	<u>Menefee - 5288'</u>
<u>Kirtland Sh - 2733'</u>	<u>Pt Lookout - 5573'</u>
<u>Fruitland Fm. - 3103'</u>	<u>Intermediate Casing - 3723'</u>
<u>Pictured Cliffs - 3423'</u>	<u>TD - 5873'</u>
<u>Chacra - 4393'</u>	
7. The estimated depths at which anticipated water, oil, gas or other mineral bearing formations are expected to be encountered are as follows:

Water:	<u>Ojo Alamo - 2513' - 2733'</u>
Gas & Water:	<u>Fruitland - 3103' - 3423'</u>
Gas:	<u>Pictured Cliffs - 3423' - 4393'</u>
	<u>Mesaverde - 4393' - 5873'</u>
	<u>Dakota - 8021' - 8189'</u>
8. The proposed casing program is as follows:

Surface String: 9-5/8", 32.3# H-40 @ 200' *

Intermediate String: 7", 20#, J-55 @ 3723' (J-55 will be used, unless the K-55 is the only casing available)

Production String: 4-1/2", 10.5#, J-55 @ 5873' (TD)

* The surface casing will be set at a minimum of 200', but could be set deeper if required to maintain hole stability.

9. Cement Program:

Surface String:

138 sx 50/50 POZ, + 2% Bentonite, 3% CaCl₂, 5#/sx Gilsonite, 0.25#/sx Cellophane flakes, & 0.2% CFR-3 Friction Reducer (1.34 yield = 184.5 cf); Cement density – 13.5 ppg. Water required 5.39 gal/sx. Compressive Strength – Sample cured at 70 deg F for 8 hours; 3 hrs 05 min. 50 psi; 7 hrs 45 min 500 psi; cement to surface w/150% excess of casing/hole annulus volume.

Intermediate String:

Lead Cement: 374 sx Standard cement + 3% Econolite (extender) + 10#/sx Pheno-seal; (2.88 yield = 1077.8 cf). Cement Density 11.5 ppg; Water required – 16.91 gal/sx. Compressive strength – Sample cured at 130 deg F for 24 hrs – 1 hr 47 min – 50 psi; 12 hrs – 350 psi; 24 hrs – 450 psi; Cement to surface with 150% excess of casing/hole annulus volume.

Tail Cement: 218 sx 50/50 POZ – Standard cement + 2% Bentonite + 6#/sx Pheno Seal; (1.33 yield = 289.5 cf); Cement Density – 13.5 ppg; Water required – 5.52 gal/sx; Compressive strength – Sample cured at 130 deg F for 24 hrs – 2 hrs 5 min – 50 psi; 2 hr 6 min – 500 psi; 12 hr – 1250 psi; 24 hrs – 1819 Cement to surface with 150% excess of casing/hole annulus volume.

Production String *:

Cement: 244 sx 50/50 POZ – Standard cement + 3% Bentonite + 5#/sx PhenoSeal + 0.2% CFR-3 Friction Reducer + 0.1% HR-5 Retarder + 0.8% Halad-9 Fluid Loss Additive (1.45 Yield – 354.4 cf) Cement density – 13.1 ppg; Water required 6.47 gal/sx; Compressive Strength – Sample cured at 200 de F for 23 hrs; 9 hr 50 min – 50 psi; 13 hrs 45 min – 500 psi; 16 hrs – 1500 psi; 23 hrs 2525 psi.

*The production casing cement is calculated to cover the openhole interval with 50% excess and annular volume 200' within intermediate shoe. Depending on hole conditions, the well may be cemented in a single stage or two staged.

Centralizer Program:

Surface:

Total four (4) - 1st joint - 10' above the shoe & 1 at the top of the 2nd, 3rd and 4th joints latched over the casing collar.

Intermediate:

Total seven (9) – 10' above shoe, top of 2nd, 4th, 6th, & 8th, 10th jts & 10th 1 jt. above surface casing, and on first two casing collars below the wellhead.

Production:

None planned.

Turbulators:

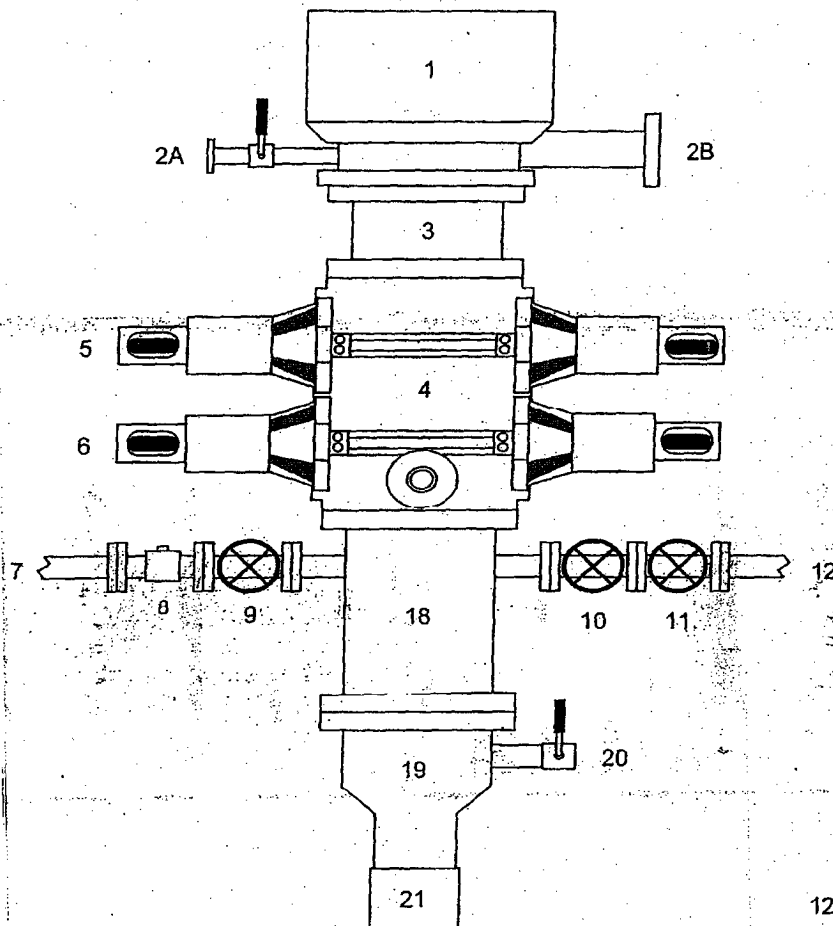
Total Three (3) – on intermediate casing at 1st jt. below the Ojo Alamo and next 2 jts up.

10. The minimum specifications for pressure control equipment which are to be used, a schematic diagram thereof showing sizes, pressure ratings (or) API series and the testing procedure and testing frequency are enclosed within the APD packet.
11. Drilling Mud Prognosis: Surface - spud mud on surface casing.
Intermediate - spud mud generated from natural clays with gel sweeps pretreated w/LCM before entering coal interval.
Below Intermediate - air or gas drilled.
12. The testing, logging, and coring programs are as follows:
D.S.T.s or cores: _____
Logs: Cased hole TDT with GR to surface _____
13. Anticipated no abnormal pressures or temperatures to be encountered or any other potential hazards such as Hydrogen Sulfide Gas. Low risk H₂S equipment will be used.

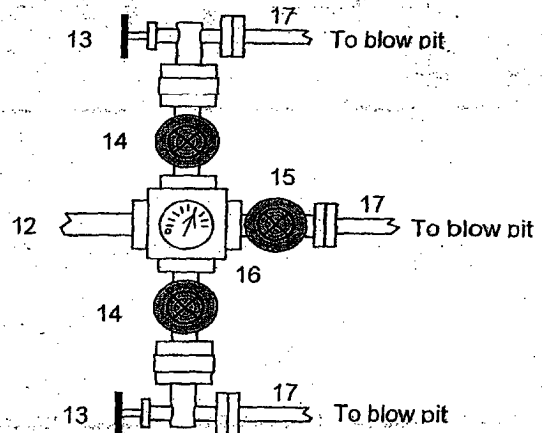
Estimated Bottomhole pressure:
Mesaverde – 700 psi
14. The anticipated starting date is approximately March 30, 2004 with duration of drilling / completion operations for approximately 20 days thereafter.

BLOWOUT PREVENTER ARRANGEMENT & PROGRAM

For Drilling to Intermediate Casing Point & Setting 7" Intermediate Casing



1. Rotating Head
- 2A. Fill-up Line & valve
- 2B. Flowline
3. Spacer Spool
4. Double Ram BOP (11", 3000 psi)
5. Pipe Rams
6. Blind Rams
7. Kill Line
8. Kill Line Check Valve
9. Kill Line Valve
10. Inner Choke Line Valve (3")
11. Outer Choke Line Valve (3")
12. Choke Line (3")
13. Variable Choke
14. Choke Line Valve (2")
15. Panic Line Valve (3")
16. Choke Manifold Pressure Gauge
17. Choke Line (2")
18. Mud Cross Spacer Spool
19. Casing Head "A" Section
20. Casing Head "A" Section 2" Valve
21. 9 5/8" Casing Collar

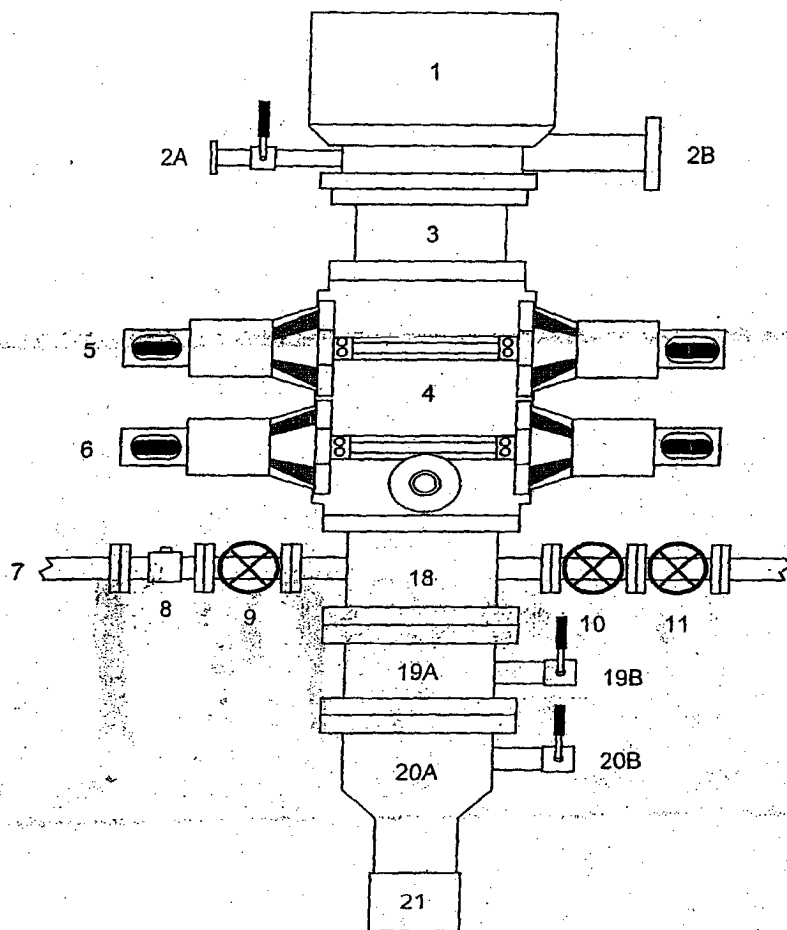


A 12-1/4" hole will be drilled to approximately 220' and the 9-5/8" surface casing will be run and cemented. The Casing Head "A" Section will be screwed onto the 9-5/8" surface casing stub. The BOP will be installed on the Casing Head "A" section. A test plug will be set in the wellhead and the pipe rams and choke manifold will be tested to 200 psi to 300 psi (low pressure test) for 2-3 minutes and to 1000 psi (high pressure test) for 10 minutes. Then the test plug will be removed and the 9-5/8" casing will be pressure tested against closed blind rams to 200 psi to 300 psi for 2-3 minutes and to 1000 psi for 30 minutes (this value is one 44% of the minimum internal yield pressure of the 9-5/8" casing). An 8-3/4" hole will be drilled to intermediate casing point and 7" casing will be run and cemented.

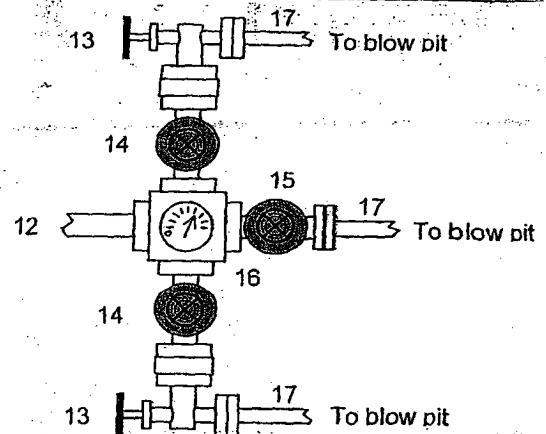
In addition to the equipment in the above diagram the following equipment will comprise the BOP system:
 Upper Kelly cock Valve with handle
 Stab-in TIW valve for all drillstrings in use

BLOWOUT PREVENTER ARRANGEMENT & PROGRAM

For Drilling to TD and Setting 4.5 inch Casing



1. Rotating Head
- 2A. Fill-up Line & valve
- 2B. Bleeie Line (for Air Drilling)
3. Spacer Spool
4. Double Ram BOP (11", 3000 psi)
5. Pipe Rams
6. Blind Rams
7. Kill Line
8. Kill Line Check Valve
9. Kill Line Valve
10. Inner Choke Line Valve (3")
11. Outer Choke Line Valve (3")
12. Choke Line (3")
13. Variable Choke
14. Choke Line Valve (2")
15. Panic Line Valve (3")
16. Choke Manifold Pressure Gauge
17. Choke Line (2")
18. Mud Cross Spacer Spool
- 19A Csg Spool "B" Section (11", 3M)
- 19B "B" Section Csg Valve (2", 3M)
- 20A Csg Head "A" Section (11", 3M)
- 20B "A" Section Csg Valve (2", 3M)
21. 9.5/8" Casing Collar



After the 7" intermediate casing has been run and cemented, the Casing Spool ("B" Section) will be installed on the wellhead ("A" Section) and the BOP will be installed on the Casing Spool. A test plug will be set in the wellhead and the pipe rams, blind rams, and choke manifold will be tested to 200 psi to 300 psi (low pressure test) for 2-3 minutes and to 3000 psi (high pressure test) for 10 minutes. Then the test plug will be removed and the 7" casing will be pressure tested against closed blind rams to 200 psi to 300 psi for 2-3 minutes and to 1800 psi for 30 minutes - this test pressure is 48% of the minimum internal yield strength of 3740 psi for the 7", 20#, J-55, STC casing. Then we will air drill the 6-1/4" hole to TD and run and cement the 4-1/2" casing.

In addition to the equipment in the above diagram the following equipment will comprise the BOP system:

1. Upper Kelly cock Valve with handle
2. Stab-in TIW valve for all drillstrings in use

**San Juan 29-6 Unit #17C
NMNM012698; Unit O, 500' FSL & 1900' FEL
Section 1, T29N, R6W; Rio Arriba County, NM**

Cathodic Protection

ConocoPhillips proposes to drill a cathodic protection deep well groundbed for the subject well. Will drill a 6-7/8" hole to an anticipated minimum depth of 300' (maximum depth of 500'). Cement plugs will not be used unless more than one water zone is encountered. Prior drilling history for the area indicates only one zone to that depth. If more than one water zone is encountered, notification will be made and details of cement and casing will be provided.

All drilling activity will remain on existing well pad and a Farmington based company will be doing the drilling for ConocoPhillips.

See attached drawing on proposed placement of groundbed & underground AC & DC cables and rectifier.