

UNITED STATES
DEPARTMENT OF THE INTERIOR
BUREAU OF LAND MANAGEMENT

APPLICATION FOR PERMIT TO DRILL, DEEPEN, OR PLUG BACK

RECEIVED
2004 MAY 10 PM 2:07
070 Farmington, NM

1a. Type of Work DRILL	5. Lease Number NM-012694 Unit Reporting Number	
1b. Type of Well GAS	6. If Indian, All. or Tribe	
2. Operator BURLINGTON RESOURCES Oil & Gas Company	7. Unit Agreement Name San Juan 30-6 Unit	
3. Address & Phone No. of Operator PO Box 4289, Farmington, NM 87499 (505) 326-9700	8. Farm or Lease Name San Juan 30-6 Unit 9. Well Number #461S	
4. Location of Well 1525' FNL, 870' FWL Latitude 36° 49.8096'N, Longitude 107° 32.7446'W	10. Field, Pool, Wildcat Basin Fruitland Coal 11. Sec., Twn, Rge, Mer. (NMPM) E Sec. 11, T30N, R07W API # 30-039-27733	
14. Distance in Miles from Nearest Town 43.6 miles to Blanco, NM Post Office	12. County Rio Arriba	13. State NM
15. Distance from Proposed Location to Nearest Property or Lease Line 870'	17. Acres Assigned to Well 320 W/2	
16. Acres in Lease	18. Distance from Proposed Location to Nearest Well, Drlg, Compl, or Applied for on this Lease 22'	
19. Proposed Depth 3194'	20. Rotary or Cable Tools Rotary	
21. Elevations (DF, FT, GR, Etc.) 6222' GR	22. Approx. Date Work will Start	
23. Proposed Casing and Cementing Program See Operations Plan attached		
24. Authorized by: <u>Joni Clark</u> Regulatory Specialist	<u>2/12/04</u> Date	

PERMIT NO.

APPROVAL DATE

APPROVED BY [Signature]

TITLE AFTM

DATE 6-14-04

Archaeological Report attached

Threatened and Endangered Species Report attached

NOTE: This format is issued in lieu of U.S. BLM Form 3160-3

Title 18 U.S.C. Section 1001, makes it a crime for any person knowingly and willfully to make to any department or agency of the United States any false, fictitious or fraudulent statements or presentations as to any matter within its jurisdiction.

NO HPA NOTIFICATION REQUIRED UNDER ORDER R-8768F.

Subject to technical and
procedural review pursuant to 43 CFR 3165.3
and appeal pursuant to 43 CFR 3165.4

DRILLING OPERATIONS AUTHORIZED ARE
SUBJECT TO COMPLIANCE WITH ATTACHED
"GENERAL REQUIREMENTS".

NMOCOD

DISTRICT I
1625 N. French Dr., Hobbs, N.M. 88240

DISTRICT II
811 South First, Artesia, N.M. 88210

DISTRICT III
1000 Rio Brazos Rd., Aztec, N.M. 87410

DISTRICT IV
2040 South Pacheco, Santa Fe, NM 87505

State of New Mexico
Energy, Minerals & Natural Resources Department

Form C-102
Revised August 15, 2000

OIL CONSERVATION DIVISION

2040 South Pacheco
Santa Fe, NM 87505

Submit to Appropriate District Office
State Lease - 4 Copies
Fee Lease - 3 Copies

2004 MAY 10 PM 2:07 ☐ AMENDED REPORT

WELL LOCATION AND ACREAGE DEDICATION PLAT

*API Number 30-039-27733	*Pool Code 71629	*Pool Name Basin Fruitland Coal
*Property Code 7469	*Property Name SAN JUAN 30-6 UNIT	*Well Number 461S
*OGRID No. 14538	*Operator Name BURLINGTON RESOURCES OIL AND GAS COMPANY LP	*Elevation 6222'

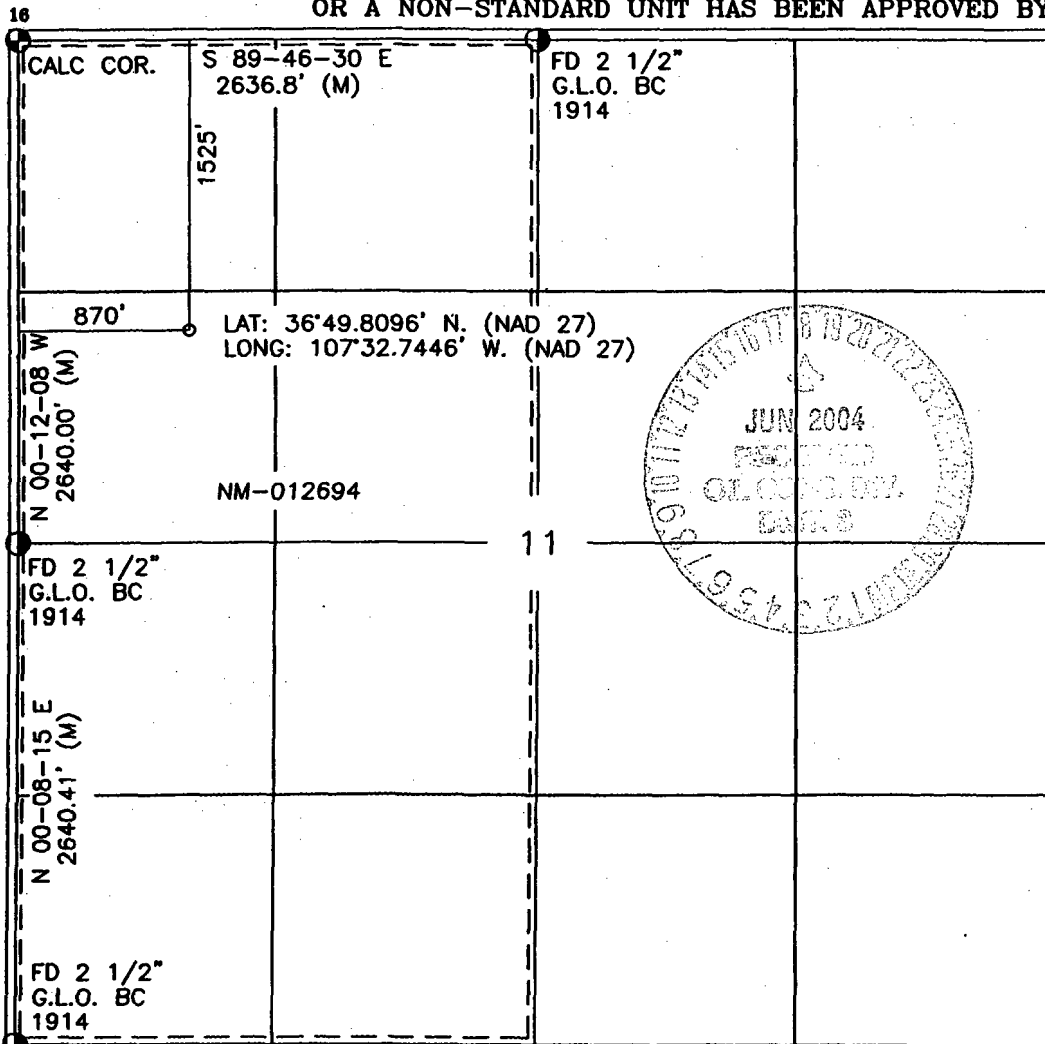
¹⁰ Surface Location

UL or lot no.	Section	Township	Range	Lot Idn	Feet from the	North/South line	Feet from the	East/West line	County
E	11	30-N	7-W		1525'	NORTH	870'	WEST	RIO ARRIBA

¹¹ Bottom Hole Location If Different From Surface

UL or lot no.	Section	Township	Range	Lot Idn	Feet from the	North/South line	Feet from the	East/West line	County
Dedicated Acres FTC W/320			Joint or Infill		Consolidation Code		Order No.		

NO ALLOWABLE WILL BE ASSIGNED TO THIS COMPLETION UNTIL ALL INTERESTS HAVE BEEN CONSOLIDATED
OR A NON-STANDARD UNIT HAS BEEN APPROVED BY THE DIVISION



17 OPERATOR CERTIFICATION

I hereby certify that the information contained herein is true and complete to the best of my knowledge and belief.

Signature: Joni Clark
Printed Name: Joni Clark
Title: Regulatory Specialist
Date: 2-12-04

18 SURVEYOR CERTIFICATION

I hereby certify that the well location shown on this plat was plotted from field notes of actual surveys made by me or under my supervision, and that the same is true and correct to the best of my belief.

Date of Survey: 10-03-03
Signature and Seal of Professional Surveyor: [Signature]
Certificate Number: 14827

OPERATIONS PLAN

Well Name: San Juan 30-6 Unit # 461S
Location: 1525' FNL, 870' FWL Section 11 T-30-N, R-07-W
Latitude 36° 49.8096'N, Longitude 107° 32.7446'W
Rio Arriba, NM
Formation: Basin Fruitland Coal
Elevation: 6222'GR

Formation:	Top	Bottom	Contents
Surface	San Jose	2083'	
Ojo Alamo	2083'	2190'	aquifer
Kirtland	2190'	2617'	
Fruitland	2617'	2842'	
Fruitland Coal	2842'	3109'	gas
Intermediate TD	2880'		
B/Basal Coal	3109'	3110'	gas
Pictured Cliffs	3110'		
Total Depth	3194'		

Logging Program: GR/Density from 7" to 3194'

Mudlog: from 7" to 3194'

Coring Program: none

Mud Program:

Interval	Type	Weight	Vis.	Fluid Loss
0- 120'	Spud Mud/Air/Air Mist	8.4-9.0	40-50	no control
120-2880'	Non-dispersed	8.4-9.0	30-60	no control
2880-3194'	Air/Mist			

Casing Program (as listed, the equivalent, or better):

Hole Size	Depth Interval	Csg. Size	Wt.	Grade
12 1/4"	0' - 120'	9 5/8"	32.3#	H-40
8 3/4"	0' - 2880'	7"	20.0#	J-55
6 1/4"	2880' - 3194'	open hole		

Alternate Casing Program (as listed, the equivalent, or better):

Hole Size	Depth Interval	Csg. Size	Wt.	Grade
12 1/4"	0' - 120'	9 5/8"	32.3#	H-40
8 3/4"	0' - 2898'	7"	20.0#	J-55
6 1/4"	2848' - 3194'	5 1/2"	15.5#	J-55

Tubing Program:

0' - 3194'	2 3/8"	4.7#	J-55
------------	--------	------	------

Float Equipment: 9 5/8" surface casing - saw tooth guide shoe. Centralizers will be run in accordance with Onshore Order #2.

7" intermediate casing - guide shoe and self-fill float collar. Standard centralizers run every other joint above shoe. Two turbolizing type centralizers - one below and one into the base of the Ojo Alamo @ 2190'. Standard centralizers thereafter every fourth joint up to the base of the surface pipe.

Wellhead Equipment: 9 5/8" x 7" x 2 3/8" x 11" 2000 psi xmas tree assembly.

Cementing:

9 5/8" surface casing -

Pre-Set Drilled Cement with 23 sx Type I, II cement with 20% flyash mixed at 14.5 ppg, 1.61 cu ft per sack yield. (37 cu ft of slurry, bring cement to surface) Wait on cement for 24 hours for pre-set holes before pressure testing or drilling out from under surface.

Conventionally Drilled

Cement with 88 sx Type III cement with 0.25 pps Celloflake, 3% CaCl. (113 cu ft of slurry, 200% excess, bring cement to surface) Wait on cement for 8 hrs for conventionally set holes before pressure testing or drilling out from under surface.

WOC until cement establishes 250 psi compressive strength prior to NU of BOPE.

7" intermediate casing - lead w/246 sacks Premium Lite with 3% calcium chloride, 5 pps LCM-1, and 1/4#/sack flocele, 0.4% FL-52, & 0.4% SMS. Tail with 90 sacks Type III cmt with 1% calcium chloride, 1/4#/sack flocele and 0.2% FL-52 (649 cu.ft., 50% excess to circulate to surface).

5 1/2" liner - will not be cemented if run.

Note: If open hole logs are run, cement volumes will be based on 25% excess over caliper volumes.

BOP and tests:

Surface to intermediate TD - 11" 2000 psi (minimum) double gate BOP stack (Reference Figure #1). Prior to drilling out surface casing, test BOPE to 600 psi for 30 min.

Intermediate TD to Total Depth - 7 1/6" 2000 psi (minimum) completion BOP stack (Reference Figure #2) Prior to drilling out intermediate casing, test BOPE and casing to 1500 psi for 30 minutes.

From surface to 7" TD - a choke manifold will be installed in accordance with Onshore Order No. 2 (Reference Figure #3). When the cavitation completion rig drills the production hole, the completion rig configuration will be used (Reference Figure #4)

Pipe rams will be actuated at least once each day and blind rams actuated once each trip to test proper functioning. An upper kelly cock valve with handle and drill string safety valves to fit each drill string will be maintained and available on the rig floor.

Additional information:

- * The Fruitland Coal formation will be completed.
- * Anticipated pore pressure for the Fruitland is less than 500 psi.
- * This gas is dedicated.
- * The west half of Section 11 is dedicated to the Fruitland Coal.

Date: 4-21-04

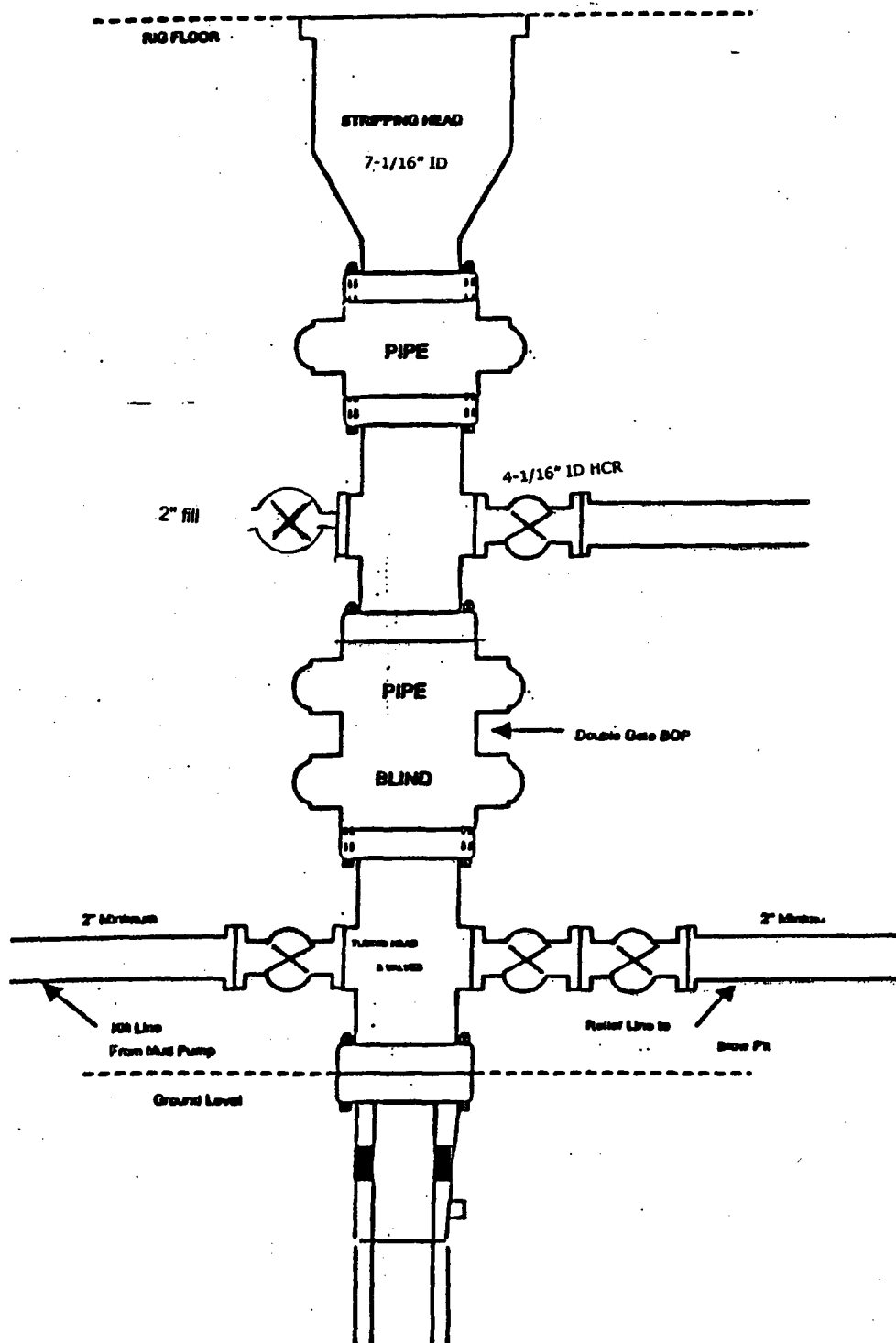
Drilling Engineer:

Jim McElathy

BURLINGTON RESOURCES

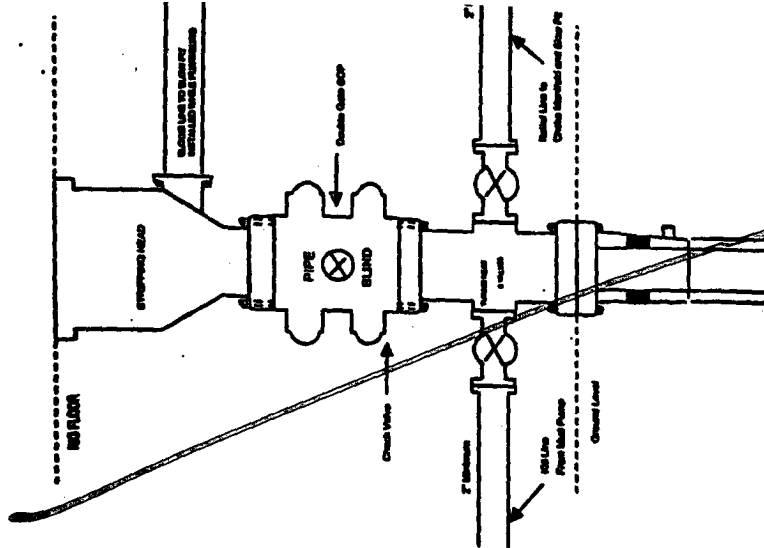
FIGURE #4

Cavitation Rig BOP Configuration 2,000 psi Minimum System



BURLINGTON RESOURCES

Completion/Workover Rig
BOP Configuration
2,000 psi System

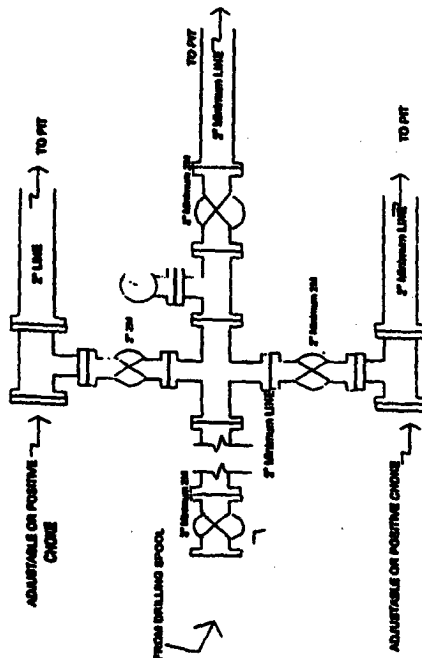


Minimum BOP installation for all Completion/Workover Operations. 7-1/16" bore, 2000 psi minimum working pressure double gate BOP to be equipped with blind and pipe rams. A stripping head to be installed on the top of the BOP. All BOP equipment is 2000 psi working pressure or greater excluding 500 psi stripping head.

Figure #2

BURLINGTON RESOURCES

Drilling Rig
Choke Manifold Configuration
2000 psi System

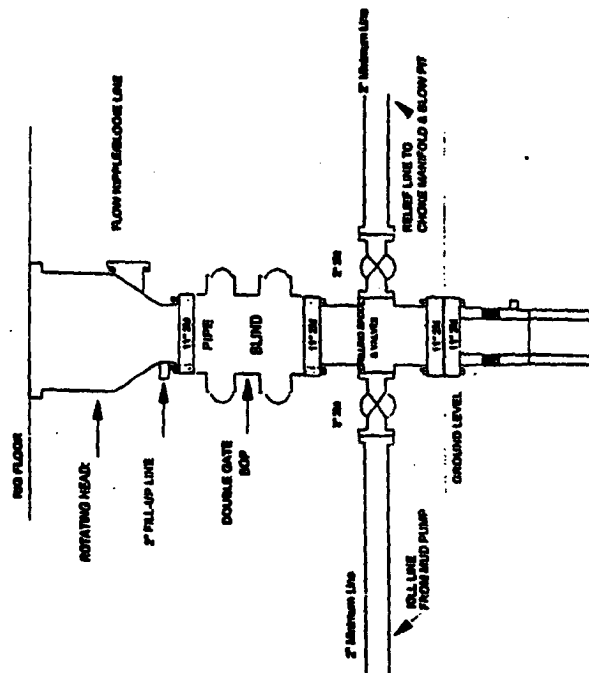


Choke manifold installation from Surface Casing Point to Total Depth. 2,000psi working pressure equipment with two chokes.

Figure #3

Burlington Resources

Drilling Rig
2000 psi System



BOP installation from Surface Casing Point to Total Depth. 11" Bore 10" Nozzle, 2000 psi working pressure double gate BOP to be equipped with blind rams and pipe rams. A 500 psi rotating head on top of ram preventers. All BOP equipment is 2,000 psi working pressure

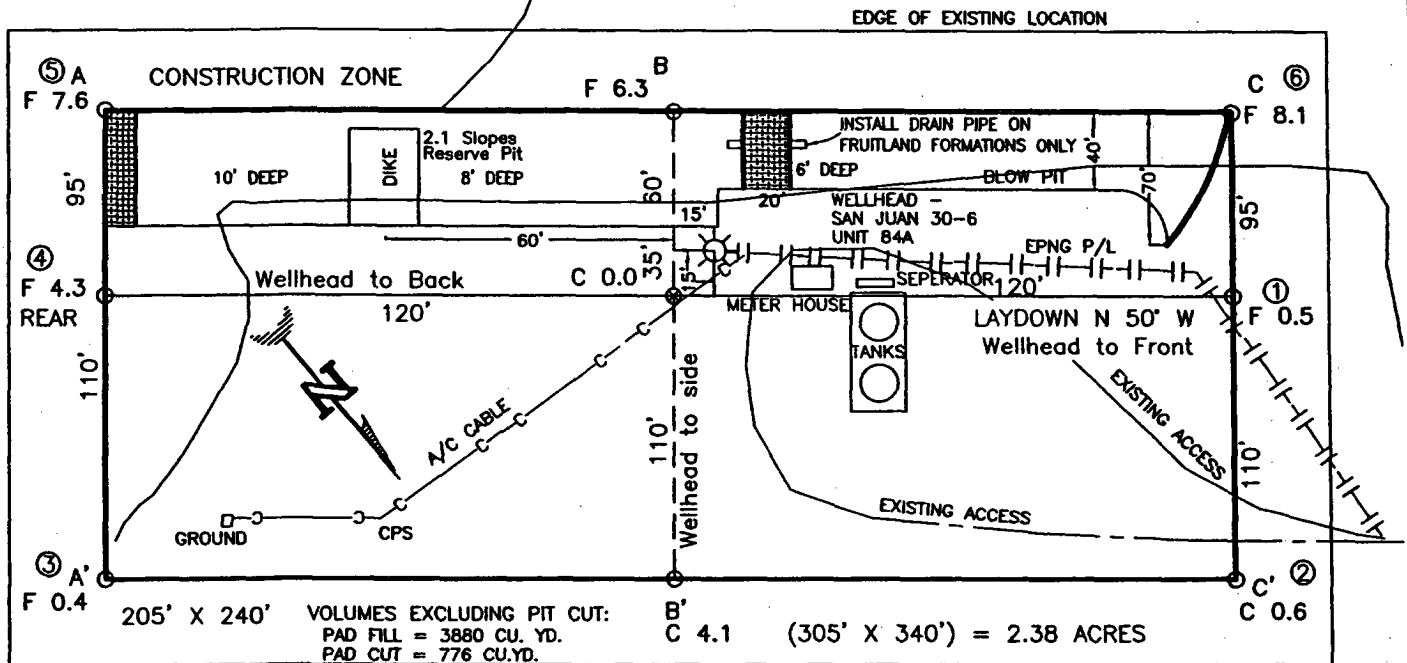
Figure #1

4-20-01

4-20-01

Conditions of approval, if any:

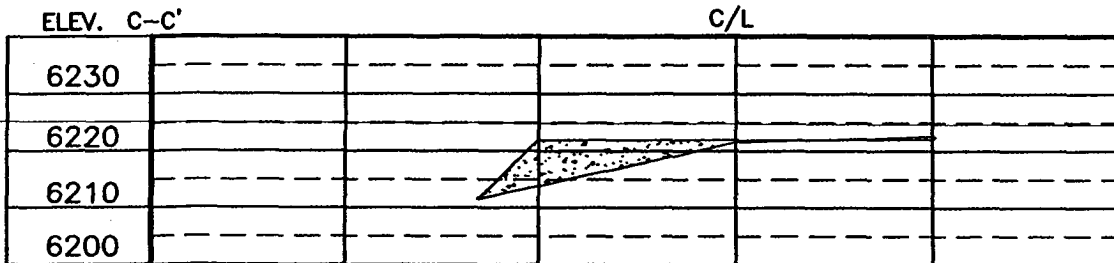
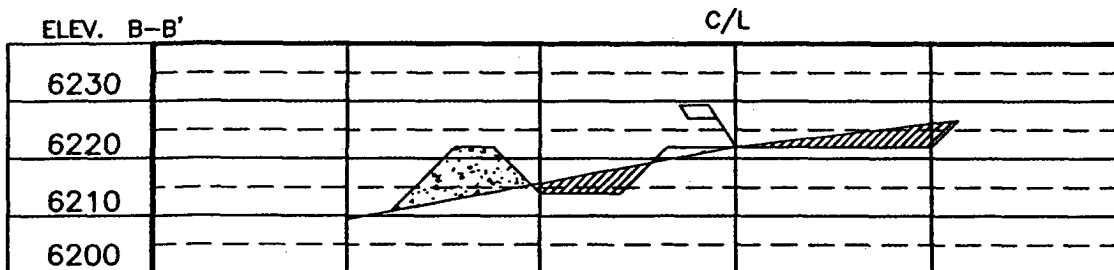
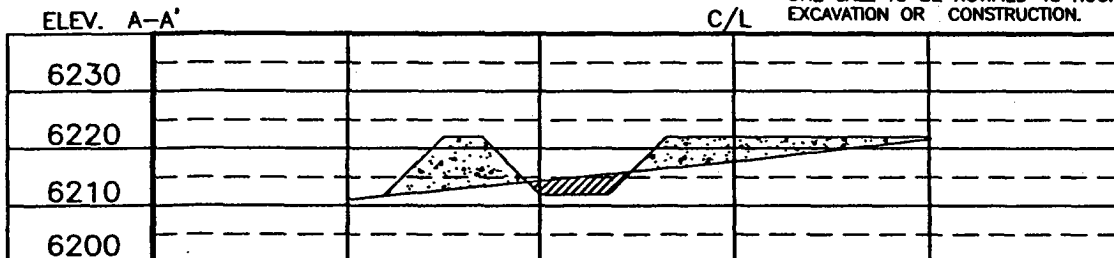
BURLINGTON RESOURCES OIL & GAS COMPANY LP
 SAN JUAN 30-6 UNIT No. 461S, 1525 FNL 870 FWL
 SECTION 11, T-30-N, R-7-W, N.M.P.M., RIO ARRIBA COUNTY, NEW MEXICO
 GROUND ELEVATION: 6222, DATE: OCTOBER 31, 2003



RESERVE PIT DIKE: TO BE 8' ABOVE DEEP SIDE (OVERFLOW - 3' WIDE AND 1' ABOVE SHALLOW SIDE).
 BLOW PIT: OVERFLOW PIPE HALFWAY BETWEEN TOP AND BOTTOM AND TO EXTEND OVER PLASTIC LINER AND INTO BLOW PIT.

NOTE:

DAGGETT ENTERPRISES, INC. IS NOT LIABLE FOR UNDERGROUND UTILITIES OR PIPELINES. NEW MEXICO ONE CALL TO BE NOTIFIED 48 HOURS PRIOR TO EXCAVATION OR CONSTRUCTION.



NOTE: CONTRACTOR SHOULD CALL ONE-CALL FOR LOCATION OF ANY MARKED OR UNMARKED BURIED PIPELINES OR CABLES ON WELL PAD AND OR ACCESS ROAD AT LEAST TWO (2) WORKING DAYS PRIOR TO CONSTRUCTION.

DRAWN BY: A.G.

ROW#: BR503

CADFILE: BR503CF8

DATE: 11/7/03

Daggett Enterprises, Inc.
 Surveying and Oil Field Services
 P. O. Box 15088 Farmington, NM 87401
 Phone (505) 326-1772 Fax (505) 326-6019