

SUNDRY NOTICES AND REPORTS ON WELLS
Do not use this form for proposals to drill or to re-enter an abandoned well. Use Form 3160-3 (APD) for such proposals.

SUBMIT IN TRIPLICATE - Other instructions on reverse side

1. Type of Well

☐ Oil Well ☒ Gas Well ☐ Other

2. Name of Operator

Roddy Production Company, Inc.

3a. Address

P.O. Box 2221, Farmington, NM 87499

3b. Phone No. (include area code)

505-325-5750

4. Location of Well (Footage, Sec., T, R., M., or Survey Description)

Surface Location: 1815' FSL x 1500' FWL, Section 21, T28N, R11W

5. Lease Serial No.

NM-10063

6. If Indian, Allottee or Tribe Name

N/A

7. If Unit or CA/Agreement, Name and/or No.

8. Well Name and No.

Lucerne 6

9. API Well No.

30-045-20282

10. Field and Pool, or Exploratory Area

Kutz Fruitland Sand

11. County or Parish, State

San Juan County, New Mexico

12. CHECK APPROPRIATE BOX(ES) TO INDICATE NATURE OF NOTICE, REPORT, OR OTHER DATA

TYPE OF SUBMISSION

TYPE OF ACTION

☒ Notice of Intent

☐ Subsequent Report

☐ Final Abandonment Notice

☐ Acidize

☐ Alter Casing

☐ Casing Repair

☐ Change Plans

☐ Convert to Injection

☐ Deepen

☐ Fracture Treat

☐ New Construction

☐ Plug and Abandon

☐ Plug Back

☐ Production (Start/Resume)

☐ Reclamation

☐ Recomplete

☐ Temporarily Abandon

☐ Water Disposal

☐ Water Shut-Off

☐ Well Integrity

☐ Other Work Over

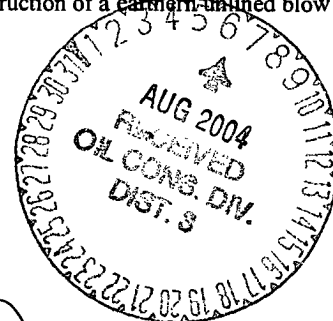
Operations

3. Describe Proposed or Completed Operation (clearly state all pertinent details, including estimated starting date of any proposed work and approximate duration thereof. If the proposal is to deepen directionally or recompleat horizontally, give subsurface locations and measured and true vertical depths of all pertinent markers and zones. Attach the Bond under which the work will be performed or provide the Bond No. on file with BLM/BIA. Required subsequent reports shall be filed within 30 days following completion of the involved operations. If the operation results in a multiple completion or recompleat in a new interval, a Form 3160-4 shall be filed once testing has been completed. Final Abandonment Notices shall be filed only after all requirements, including reclamation, have been completed, and the operator has determined that the site is ready for final inspection.)

Downhole commingle the Basin Fruitland Coal and the West Kutz-Picture Cliffs. Fruitland Coal perforation intervals as follows: 1677'-1686', 1639'-1642', 1617'-1619', 1590'-1598', 1556'-1558', 1533' and 1427' at 4jsf. Existing Picture Cliffs perforation interval as follows: 1761'-1768' at 4jsf. Allocation commingling will not reduce the value of the total remaining reserves. This operation will include the construction of a earthen lined blow pit and a work over pit. Pits will be closed per NMOCD guide lines. Estimated start date is June 1, 2004

CONDITIONS OF APPROVAL

Adhere to previously issued stipulations.



PLEASE SUBMIT C103 (DEDICATED ACREAGE PLAT) FOR FRUITLAND COAL.

14. I hereby certify that the foregoing is true and correct

Name (Printed/Typed)

Robert R. Griffiee

Title Operation Manager

Signature

R. R. Griffiee

Date 05/26/04

THIS SPACE FOR FEDERAL OR STATE OFFICE USE

Approved by (Signature)

Name

(Printed/Typed)

ACCEPTED FOR RECORD

Title

Office

AUG 4 2004

FARMINGTON FIELD OFFICE

Conditions of approval, if any, are attached. Approval of this notice does not warrant or certify that the applicant holds legal or equitable title to those rights in the subject lease which would entitle the applicant to conduct operations thereon.

Title 18 U.S.C. Section 1001 and Title 43 U.S.C. Section 1212, make it a crime for any person knowingly and willfully to make to any Department or Agency of the United States any false, fictitious or fraudulent statements or representations as to any matter within its jurisdiction.

(Continued on next page)

NMOCD

Mountview #2E
1,540' FNL & 1,550' FEL, Sec 19, T-25-N, R-10-W
San Juan County, New Mexico

FC RECOMPLETION PROCEDURE

Inter Csg: 7", 23#, J-55, ST&C csg @ 5,874'. Cmt'd 1st stage w/715 sx 50/50 pozmix. Cmt'd 2nd stage w/477 sx Howco Lite cmt followed by 100 sx CIB cmt. Circ cmt to surf. Yield @ 85% = 3,500 psig. Cap = 1.9815 gal/ft = 0.0471 bbl/ft.

Csg Liner: 4-1/2", 10.5#, K-55, ST&C liner fr/5,670' - 6,288'. Cmt'd w/80 sx 50/50 pozmix.

Tubing: 195 jts, 2-3/8" tbg, 2 - 2-3/8" tbg subs (4' & 6') & SN. EOT @ 6,094'.

Workstring: 45 jts, 3-1/2", 9.3#, J-55, EUE, 8rd tbg.
Yield @ 80% = 5,600 psig. Cap = 0.3652 gal/ft = 0.00870 bbl/ft.

Perfs: DK: 6,222' - 6,226' w/4 JSPF (16 - 0.51" holes). CIBP @ 6,200'.
6,008'-10', 6,022'-25' & 6,050'-66' w/4 JSPF (84 - 0.38" holes) - 02/94.
6,074' - 6,124' w/2 JSPF (100 - 0.45" holes) - 09/95.

Objective: Recomplete to Fruitland Coal.

1. MIRU PU. MI 45 jts 3-1/2", 9.3#, J-55, EUE, 8rd tbg. Blow well dwn. Kill well w/2% KCl wtr if necessary. ND WH. NU BOP. TOH with 195 jts 2-3/8" tbg, 2 tbg subs & SN.
2. TIH with 6-3/4" bit, 7" csg scraper and 2-3/8" tubing. CO to 2,000'. TOH. TIH with 3-3/8" bit, 4-1/2" casing scraper and 2-3/8" tubing. CO to 6,000' (top of liner @ 5,670'). TOH.
3. MIRU wireline services. RIH with 4-1/2" CIBP and set at 5,960'. Run GR/CCL & compensated neutron log from 2,000 to surface. RIH with 7" RBP and set @ 1,600' (ensure RBP not set in a casing collar). Dump bail sand on top of RBP.
4. Pressure test casing to 1,000 psig for 30 minutes. Release pressure.
5. Perforate FC with a 4" gun from 1,390'-1,393', 1,396' - 1,400' & 1,484' - 1,490' with 3 JSPF at 120 deg phasing (39 - 0.49" holes). RDMO wireline services.
6. TIH with 7" RBP, packer and 2-3/8" tbg. Using the RBP and packer selectively acidize the following perforated intervals with a total of 650 gals 15% HCl acid and 16 bbls fresh water.

Perforated Interval (ft)	Net Interval (ft)	15% HCl acid (gals)	Flush Volume (bbls)
1,390' - 1,400'	7	350	8 bbls
1,484' - 1,490'	6	300	8 bbls

7. TOH & LD RBP, pkr & 2-3/8" tbg. PU & TIH w/7" pkr & 3-1/2" frac string. Set packer @ 1,300'. ND BOP. NU frac valve. RDMO PU. MI 6 - 400 bbl frac tanks and fill with fresh water. Set flowback tank.
8. Have Halliburton run preliminary fluid quality tests per attached APEX requirements.
9. MIRU Halliburton frac services. Load and pressure up tubing/casing annulus to 500 psig. Frac Fruitland Coal perforations from 1,390' - 1,490' down 3-1/2" frac string at 35 BPM with 500 gals 15% HCl acid, 5,500 gals 20# linear gel & 66,000 gals 20# Delta 140 (borate crosslinked system) with Sandwedge carrying 64,000 lbs 20/40 Brady sand and 28,000 lbs 16/30 Brady sand. Pump treatment as follows:

Stage (#)	Job Time (min)	Surface Clean Volume (gal)	Surface Slurry Rate (bpm)	Proppant Conc. (ppg)	Proppant Type	Fluid Type
1	2	500#	5.0			20# linear gel
2	17	0	0			Shut-in/closure
3	20	500#	5.0			15% HCl acid
4	24	4,500#	35			20# linear gel
5	54	0	0			Shut-in/step rate
6	60	7,000	35			20# XL Borate gel
7	61	1,000	35	0.5	20/40 sand	20# XL Borate gel
8	65	4,000	35			20# XL Borate gel
9	66	1,000	35	0.5	20/40 sand	20# XL Borate gel
10	67	1,000	35	1.0	20/40 sand	20# XL Borate gel
11	72	4,000	35			20# XL Borate gel
12	73	1,000	35	1.0	20/40 sand	20# XL Borate gel
13	74	1,000	35	1.5	20/40 sand	20# XL Borate gel
14	80	6,000	35			20# XL Borate gel
15	87	4,000	35	0.5	20/40 sand	20# XL Borate gel
16	96	5,000	35	1.0	20/40 sand	20# XL Borate gel
17	106	6,000	35	1.5	20/40 sand	20# XL Borate gel
18	120	7,000	35	2.0	20/40 sand	20# XL Borate gel
19	134	7,000	35	2.5	20/40 sand	20# XL Borate gel
20	142	4,000	35	3.0	20/40 sand	20# XL Borate gel
21	148	2,000	35	3.0	16/30 sand	20# XL Borate gel
22	155	3,000	35	4.0	16/30 sand	20# XL Borate gel
23	159	2,000	35	5.0	16/30 sand	20# XL Borate gel
24	160	500	20			Slickwater

Perform PIS/ to determine critical mechanisms. At shut-down, perform rate step-down test.

Do not exceed 5,600 psig.

10. SWL. MIRU PU. ND WH. NU BOP. Release packer. TOH and lay down packer and frac string.
11. PU and TIH with NC, SN and 2-3/8" tubing. CO sand with water or N2 if cannot circulate with water. CO to RBP @ 1,600'. **Note: Do not use air/foam because of incompatibility with Sandwedge.**
12. TOH with tubing. TIH with 7" retrieving head and tubing. Latch onto RBP and release. TOH with tubing and RBP.
13. TIH with OEMA joint with a 1/4" weep hole, SN and 2-3/8", 4.7#, J-55, EUE, 8rd tubing. Land SN @ approx 1,550'. ND BOP. NU WH.
14. TIH with 2" x 1-1/2" x 8' RWAC-Z - DV pump, 1' lift sub, RHBO tool, spiral rod guide and 3/4" grade "K" rods to surface.
15. Space out pump. HWO. Load tubing and check pump action. RDMO PU.
16. Set C 50-89-54 pumping unit with C 46 gas engine.
17. Start well ppg at 6 SPM and 42" SL.

OIL CONSERVATION DIVISION

P.O. Box 2088
Santa Fe, New Mexico 87504-2088

RECEIVED
SLM

CU
1980, Hobbs, NM 88240

CU
raver DD, Artesia, NM 88210

CU
to Brazos Rd., Aztec, NM 87410

WELL LOCATION AND ACREAGE DEDICATION PLAT

All Distances must be from the outer boundaries of the section

23 NOV 93 AM 10:18

for	XTO ENERGY		Lease	Mountview	Well No.	12E
Section	19	Township	25 NORTH	Range	10 WEST	County
6					NMPM	SAN JUAN

1) Footage Location of Well:

1540 feet from the	NORTH line and	1550 feet from the	EAST line
ad level Elev.	Producing Formation	Pool	Dedicated Acreage:
6522	BASIN FRUITLAND COAL	FRUITLAND COAL	N/2 320 Acres

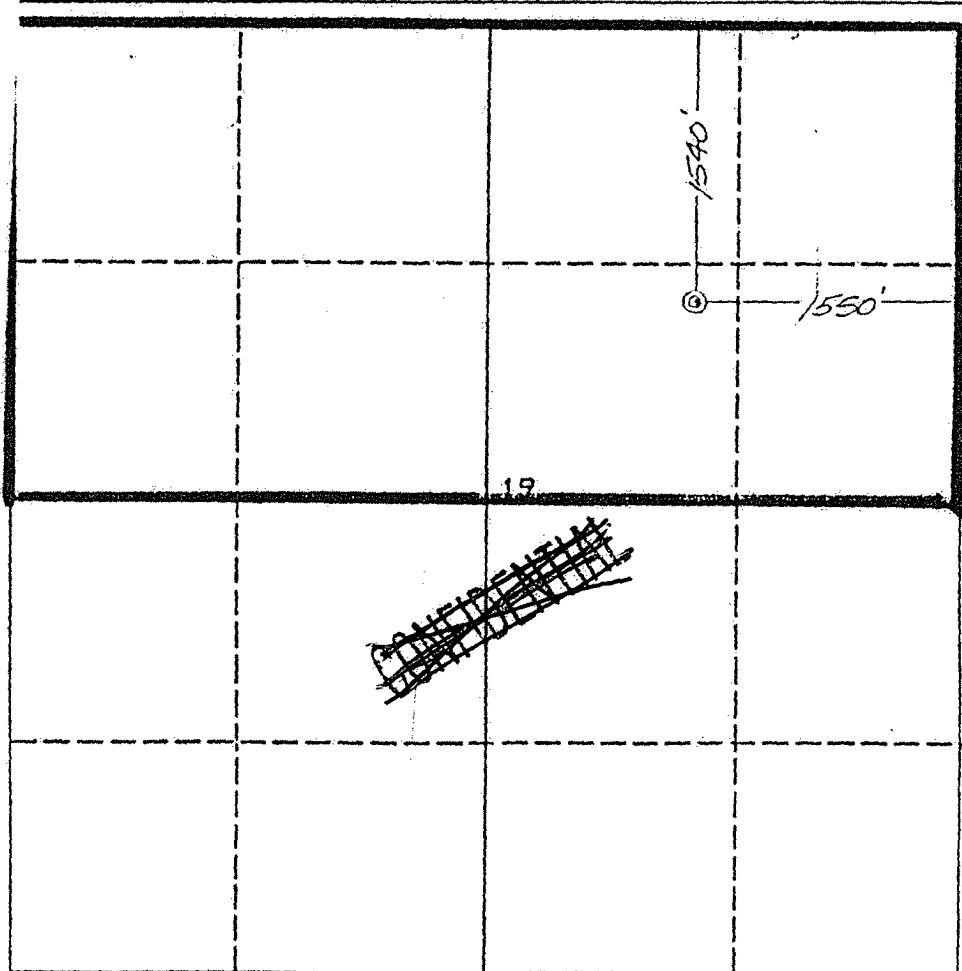
- Outline the acreage dedicated to the subject well by colored pencil or hatchure marks on the plat below.
- If more than one lease is dedicated to the well, outline each and identify the ownership thereof (both as to working interest and royalty).
- If more than one lease of different ownership is dedicated to the well, have the interest of all owners been consolidated by communitization, unitization, force-pooling, etc.?

☐ Yes
 ☐ No

If answer is "yes" type of consolidation _____

If answer is "no" list the owners and tract descriptions which have actually been consolidated. (Use reverse side of this form if necessary.)

No allowable will be assigned to the well until all interests have been consolidated (by communitization, unitization, forced-pooling, or otherwise) or until a non-standard unit, eliminating such interest, has been approved by the Division.



OPERATOR CERTIFICATION

I hereby certify that the information contained herein is true and complete to the best of my knowledge and belief.

Signature

Company

Date

SURVEYOR CERTIFICATION

I hereby certify that the well location shown on this plat was plotted from field notes of actual surveys made by me or under my supervision, and that the same is true and correct to the best of my knowledge and belief.

Date Surveyed

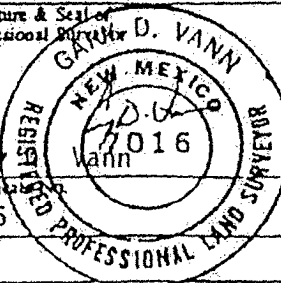
October 18, 1993

Signature & Seal of Professional Surveyor

Gary

Certification

7016



0 330 660 990 1320 1650 1980 2310 2640 2000 1500 1000 500 0