

UNITED STATES  
DEPARTMENT OF THE INTERIOR  
BUREAU OF LAND MANAGEMENTFORM APPROVED  
OMB No. 1004-0136  
Expires November 30, 2000

## APPLICATION FOR PERMIT TO DRILL OR REENTER

1a. Type of Work: <input checked="" type="checkbox"/> DRILL <input type="checkbox"/> REENTER		5. Lease Serial No. NMSF 078881
1b. Type of Well: <input type="checkbox"/> Oil Well <input checked="" type="checkbox"/> Gas Well <input type="checkbox"/> Other <input type="checkbox"/> Single Zone <input checked="" type="checkbox"/> Multiple Zone		6. If Indian, Allottee or Tribe Name
2. Name of Operator HUNTINGTON ENERGY, L.L.C. Contact: CATHY SMITH E-Mail: csmith@huntingtonenergy.com		7. If Unit or CA Agreement, Name and No. CANYON LARGO UNIT
3a. Address 6301 WATERFORD BLVD., SUITE 400 OKLAHOMA CITY, OK 73118		8. Lease Name and Well No. CANYON LARGO UNIT 455
3b. Phone No. (include area code) Ph: 405.840.9876 Ext: 0 Fx: 405.840.2011		9. API Well No. 30-039-27749
4. Location of Well (Report location clearly and in accordance with any State requirements. *) At surface SESE Lot P Tract 23 1285FSL 1300FEL At proposed prod. zone SESE Lot P Tract 23 1285FSL 1300FEL		10. Field and Pool, or Exploratory BASIN DAKOTA
14. Distance in miles and direction from nearest town or post office* 34 MILES SE OF BLANCO, NM		11. Sec., T., R., M., or Blk. and Survey or Area p Sec 1 T25N R7W Mer NMP
15. Distance from proposed location to nearest property or lease line, ft. (Also to nearest drig. unit line, if any)	16. No. of Acres in Lease 320.00	12. County or Parish RIO ARRIBA
18. Distance from proposed location to nearest well, drilling, completed, applied for, on this lease, ft.	19. Proposed Depth 8200 MD	13. State NM
21. Elevations (Show whether DF, KB, RT, GL, etc.) 6881 GL	22. Approximate date work will start 09/01/2004	17. Spacing Unit dedicated to this well 312.25 E/2
24. Attachments		20. BLM/BIA Bond No. on file NMB000076
23. Estimated duration		

The following, completed in accordance with the requirements of Onshore Oil and Gas Order No. 1, shall be attached to this form:

- |   |  |
|---|--|
| 1. Well plat certified by a registered surveyor.  | 4. Bond to cover the operations unless covered by an existing bond on file (see Item 20 above).    |
| 2. A Drilling Plan.   | 5. Operator certification  |
| 3. A Surface Use Plan (if the location is on National Forest System Lands, the SUPO shall be filed with the appropriate Forest Service Office). | 6. Such other site specific information and/or plans as may be required by the authorized officer. |

25. Signature (Electronic Submission)	Name (Printed/Typed) CATHY SMITH	Date 05/17/2004
Title GENERAL CONTACT		
Approved by (Signature) <i>[Signature]</i>	Name (Printed/Typed)	Date 8-9-04
Title AFM	Office FFO	

Application approval does not warrant or certify the applicant holds legal or equitable title to those rights in the subject lease which would entitle the applicant to conduct operations thereon.  
Conditions of approval, if any, are attached.

Title 18 U.S.C. Section 1001 and Title 43 U.S.C. Section 1212, make it a crime for any person knowingly and willfully to make to any department or agency of the United States any false, fictitious or fraudulent statements or representations as to any matter within its jurisdiction.

## Additional Operator Remarks (see next page)

Electronic Submission #30735 verified by the BLM Well Information System  
For HUNTINGTON ENERGY, L.L.C., sent to the Farmington

This action is subject to technical and procedural review pursuant to 43 CFR 3165.3 and appeal pursuant to 43 CFR 3165.4

DRILLING OPERATIONS AUTHORIZED ARE  
SUBJECT TO COMPLIANCE WITH ATTACHED  
"GENERAL REQUIREMENTS".

\*\* OPERATOR-SUBMITTED \*\* OPERATOR-SUBMITTED \*\* OPERATOR-SUBMITTED \*\*

NMOCD

DISTRICT I  
1825 N. French Dr., Hobbs, N.M. 88240

DISTRICT II  
1301 W. Grand Ave., Artesia, N.M. 88210

DISTRICT III  
1000 Elie Brazos Rd., Artesia, N.M. 87410

DISTRICT IV  
1220 South St. Francis Dr., Santa Fe, NM 87505

State of New Mexico  
Energy, Minerals & Natural Resources Department

OIL CONSERVATION DIVISION

1220 South St. Francis Dr.  
Santa Fe, NM 87505

Form C-11  
Revised June 10, 20  
Submit to Appropriate District Office  
State Lease - 4 Copies  
Fee Lease - 3 Copies

☐ AMENDED REPORT

WELL LOCATION AND ACREAGE DEDICATION PLAT

*API Number 30-039-27749	*Pool Code 71599	*Pool Name Basin Dakota
*Property Code 6886	*Property Name CANYON LARGO UNIT	*Well Number 455
*OGEID No. 14538	*Operator Name BURLINGTON RESOURCES OIL AND GAS COMPANY LP	*Elevation 6881'

<sup>10</sup> Surface Location

UL or lot no.	Section	Township	Range	Lot Idn	Feet from the	North/South line	Feet from the	East/West line	County
P	1	25-N	7-W		1285	SOUTH	1300	EAST	RIO ARriba

<sup>11</sup> Bottom Hole Location If Different From Surface

UL or lot no.	Section	Township	Range	Lot Idn	Feet from the	North/South line	Feet from the	East/West line	County

*Dedicated Acres 312.25 E/2	*Joint or Infill	*Consolidation Code	*Order No.
--------------------------------	------------------	---------------------	------------

NO ALLOWABLE WILL BE ASSIGNED TO THIS COMPLETION UNTIL ALL INTERESTS HAVE BEEN CONSOLIDATED  
OR A NON-STANDARD UNIT HAS BEEN APPROVED BY THE DIVISION

16	LOT 8	LOT 7	LOT 6	LOT 5
LOT 9	LOT 10	LOT 11	LOT 12	
LAT: 36°25'28" N. (NAD 83) LONG: 107°31'19" W. (NAD 83)				
FD 3 1/4" B.M. BC				
N 88-00-26 W				
FD 2 1/2" BC U.S.G.L.O. 1964				
N 00-20-10 W 2597.8' (M)				
1300'				
1285'				

17 OPERATOR CERTIFICATION

I hereby certify that the information contained herein is true and complete to the best of my knowledge or belief.

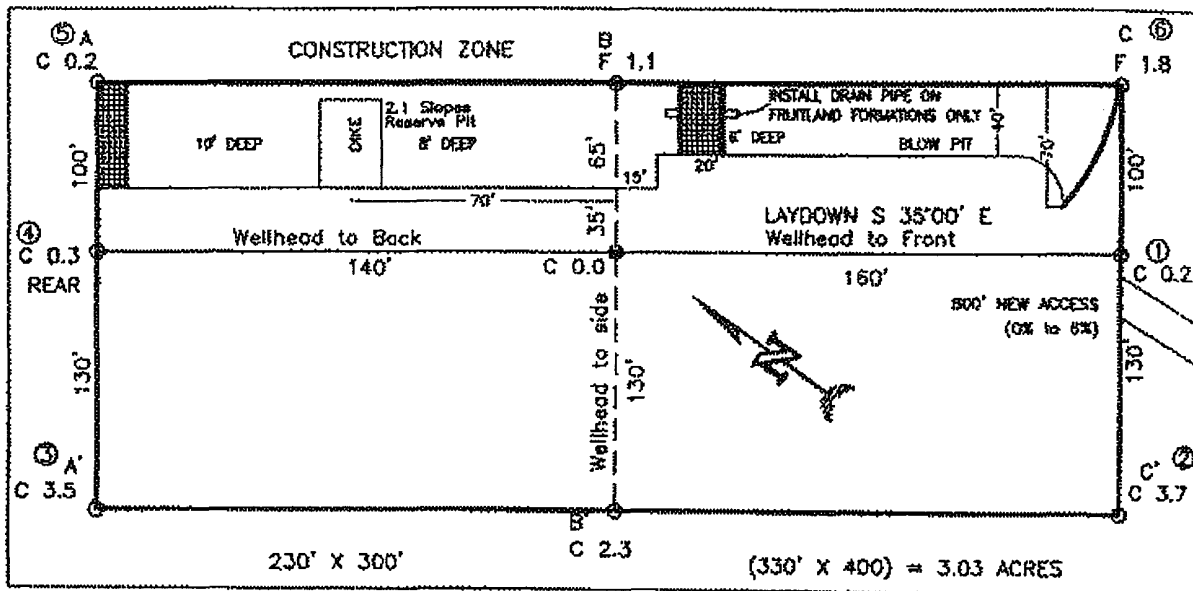
Nancy Oltmanns  
Signature  
NANCY OLTMANNS  
Printed Name  
Senior Staff Specialist  
Title  
8-9-04  
Date

18 SURVEYOR CERTIFICATION

I hereby certify that the well location shown on this plat was plotted from field notes of actual surveys made by me or under my supervision, and that the same is true and correct to the best of my belief.

DAVID L. HARRISON  
Date of Survey  
14827  
Signature and Seal of Professional Surveyor  
14827  
REGISTERED PROFESSIONAL SURVEYOR

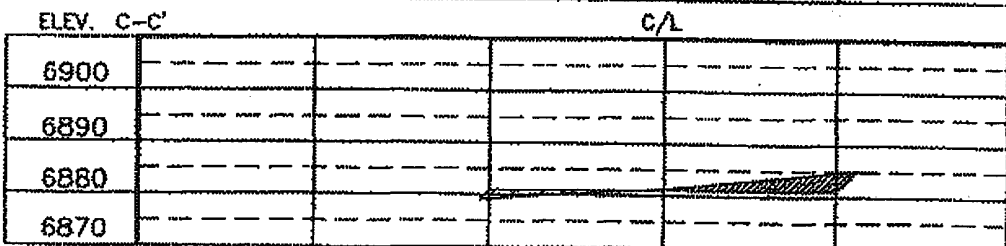
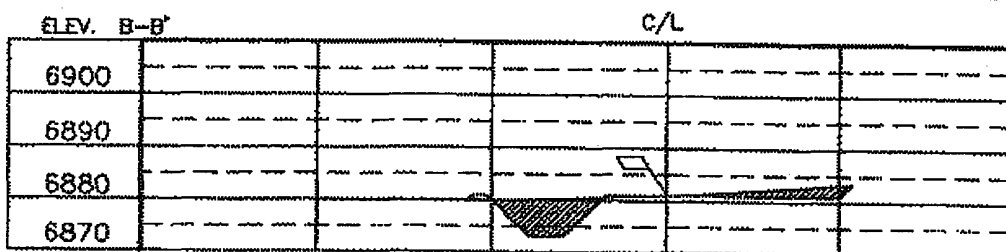
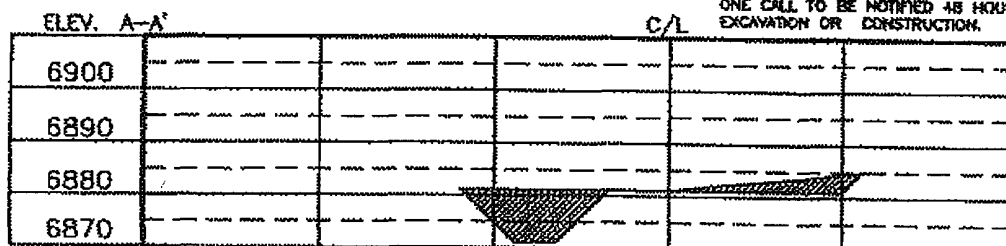
HUNTINGTON ENERGY, LLC / BURLINGTON RESOURCES OIL & GAS CO LP  
 CANYON LARGO UNIT 455, 1285 FSL 1300 FEL  
 SECTION 1, T-25-N, R-7-W, N.M.P.M., RIO ARRIBA COUNTY, NEW MEXICO  
 GROUND ELEVATION: 6881, DATE: MARCH 23, 2004



RESERVE PIT DIKE: TO BE 8' ABOVE DEEP SIDE (OVERFLOW = 3' WIDE AND 1' ABOVE SHALLOW SIDE).  
 BLOW PIT: OVERFLOW PIPE HALFWAY BETWEEN TOP AND BOTTOM AND TO EXTEND OVER PLASTIC LINER AND INTO BLOW PIT.

NOTE:

DAGGETT ENTERPRISES, INC. IS NOT LIABLE FOR UNDERGROUND UTILITIES OR PIPELINES. NEW MEXICO ONE CALL TO BE NOTIFIED 48 HOURS PRIOR TO EXCAVATION OR CONSTRUCTION.



NOTE: CONTRACTOR SHOULD CALL ONE-CALL FOR LOCATION OF ANY MARKED OR UNMARKED BURIED PIPELINES OR CABLES ON WELL PAD AND OR ACCESS ROAD AT LEAST TWO (2) WORKING DAYS PRIOR TO CONSTRUCTION.

Daggett Enterprises, Inc.  
 Surveying and Oil Field Services  
 P. O. Box 19088 • Farmington, NM 87401  
 Phone (505) 326-1772 • Fax (505) 326-6018  
 NEW MEXICO L.S. No. 14877  
 68827 METRO-0078



DATE: 3/16/04  
 BY: [Signature]

## OPERATIONS PLAN

Well Name: Canyon Largo Unit #455  
Location: 1285' FSL, 1300' FEL, SE/4 Sec 1, T-25-N, R-7-W NMPM  
Rio Arriba County, NM  
Formation: Basin Dakota  
Elevation: 6881' GL

<u>Formation Tops:</u>	<u>Top</u>	<u>Bottom</u>	<u>Contents</u>
Surface	San Jose	2188'	
Ojo Alamo	2188'	2369'	aquifer
Kirkland	2369'	2584'	gas
Fruitland	2584'	2869'	gas
Pictured Cliffs	2869'	2943'	gas
Lewis	2943'	3260'	gas
Huerfano Bentonite	3260'	3722'	gas
Chacra	3722'	4454'	gas
Massive Cliff House	4454'	4514'	gas
Menefee	4514'	5136'	gas
Menefee Point Lookout	5136'	5377'	gas
Mancos	5377'	6290'	gas
Gallup	6290'	7068'	gas
Greenhorn	7068'	7131'	gas
Graneros	7131'	7175'	gas
Dakota	7175'	7484'	gas
Morrison	7484'		gas
TD	8200'		

### Logging Program:

Open hole – Neutron-Density, Microlog – TD to minimum operations depth, DIL-GR – TD to surface  
Cased hole – CBL-CCL-GR – TD to surface  
Cores – none  
Mud log – TD to 6000'

### Mud Program:

<u>Interval</u>	<u>Type</u>	<u>Weight</u>	<u>Vis.</u>	<u>Fluid Loss</u>
0 – 320'	Spud	8.4-8.9	40-50	no control
320 - 8200'	LSND	8.4-9.0	40-60	8-12

Pit levels will be visually monitored to detect gain or loss of fluid control.

### Casing Program:

<u>Hole Size</u>	<u>Depth Interval</u>	<u>Csg. Size</u>	<u>Wt.</u>	<u>Grade</u>
12 ¼"	0' – 320'	8 5/8"	24.0#	WC-50
7 7/8"	0' – 8200'	4 ½"	11.6#	N-80

### Tubing Program:

0' – 8200'	2 3/8"	4.7#	J-55
------------	--------	------	------

### BOP Specifications, Wellhead and Tests:

#### Surface to TD –

11" 3000 psi minimum double gate BOP stack (Reference Figure #1). After nipple-up prior to drilling out surface casing, rams and casing will be tested to 600 psi for 30 minutes.

2" nominal, 3000 psi minimum choke manifold (Reference Figure #3).

Completion Operations:

6" 3000 psi double gate BOP stack (Reference Figure #2). After nipple-up prior to completion, pipe rams and casing top will be tested to 3000 psi for 15 minutes.

Surface to Total Depth:

2" nominal, 3000 psi minimum choke manifold (Reference Figure #3).

Wellhead:

8 5/8" x 4 1/2" x 1 1/2" x 1 1/2" x 3000 psi tree assembly.

General:

- Pipe rams will be actuated once each day and blind rams will be actuated once each trip to test proper functioning.
- An upper Kelly cock valve with handle available and drill string valves to fit each drill string will be available on the rig floors at all times.
- A BOP pit level drill will be conducted weekly for each drilling crew.
- All of the BOP tests and drills will be recorded in the daily drilling reports.
- Blind and pipe rams will be equipped with extension hand wheels.

Cementing:

8 5/8" surface casing –

Cement to surface w/336 sx Class "B" cement w/3% calcium chloride and 1/4#/sx cellophane flakes (396 cu. ft. of slurry, 200% excess to circulate to surface.) WOC 8 hr. prior to drilling out surface casing. Test casing to 600 psi for 30 minutes.

Saw tooth guide shoe on bottom. Bowspring centralizers will be run in accordance with Onshore Order #2.

Production Casing – 4 1/2"

Lead with 800 sx 9.5 ppg Litecrete Blend w/0.11% dispersant, 0.5% fluid loss. Tail w/407 sx Class "G" cement w/3% gel, 0.25 pps Celloflake, 5 pps Gilsonite, 0.25 pps fluid loss, 0.15% dispersant, 0.1% retardant, 0.1% antifoam (Slurry volume: 2603 cu. ft. Excess slurry 50%).

Alternate Two-stage cement job as follows:

First Stage: Cement to circulate to stage tool @ 5066'. Lead with 700 sx Class "G" 50/50 poz (13#, 1.47 yd) w/3% gel, 0.25 pps Celloflake, 5 pps Gilsonite, 0.25 pps Fluid loss, 0.15% dispersant, 0.1% retarder. WOC 4 hours prior to pumping second stage. (Slurry volume: 1029 cu. ft. Excess slurry: 50%). DV Tool at 5000 ft.

Second Stage: Cement to circulate to surface. Cement with 670 sx Class "G" (12#, 2.9yd) TXI Liteweight cement w/2.5% sodium metasilicate, 2% calcium chloride, 10 pps Gilsonite, 0.5 pps Celloflake, 0.2% antifoam. WOC a minimum of 18 hours prior to cleanout. (Slurry volume: 1914 cu. ft. Excess slurry: 50%). Tail w/50 sx Class "B" w/1/4# Flocele (15.6#, 1.18yd), (Slurry 59 cu ft, Excess 50%).

Float shoe on bottom. Three centralizers run every other joint above shoe. Thirty-five centralizers – one every 4<sup>th</sup> joint to the base of the Ojo Alamo @ 2448'. Two turbolizing type centralizers – one below and one into the base of the Ojo Alamo @ 2448'. Standard centralizers thereafter every fourth joint up to the base of the surface pipe.

Note: If open hole logs are run, cement volumes will be based on 25% excess over caliper volumes.

Additional Information:

The Dakota formations will be completed.

- No abnormal temperatures or hazards are anticipated.
- Sufficient LCM will be added to the mud system to maintain well control, if lost circulation is encountered below the top of the Pictured Cliffs.
- The east half of the Section 13 is dedicated to this well.
- This gas is dedicated.
- Anticipated pore pressure

Fruitland Coal	300 psi
Pictured Cliffs	500 psi
Mesa Verde	700 psi
Dakota	3000 psi

biochemical pathways in COTC of *Acanthopagrus* by using the transcriptome analysis. The results showed that the expression levels of genes involved in glycolysis, gluconeogenesis, glycogen metabolism, fatty acid synthesis, and amino acid metabolism were significantly up-regulated in COTC after hypoxia treatment.

**REF-3**

[illegible]

Chloe's arrested brother, Ron Barnes, says he is paid by Food Depot 1,000 per working hour as an informant with her child.

**23. Multiple Choice**

minimum 200% installation for all Compulsory 2000  
Operations. 7-1717 hours, 2000 and minimum working  
pressure double the 2000 to be equipped with 1500' and  
pipe cover. A working head to be installed on the top of  
the 2000. All 2000 equipment to 2000 and working  
pressure to minimum 2000 and 2000.

環