

UNITED STATES
DEPARTMENT OF THE INTERIOR
BUREAU OF LAND MANAGEMENT

APPLICATION FOR PERMIT TO DRILL OR REENTER

FORM APPROVED
OMB No. 1004-0136
Expires November 30, 2000

1a. Type of Work: <input checked="" type="checkbox"/> DRILL <input type="checkbox"/> REENTER		5. Lease Serial No. SF-077329
b. Type of Well: <input type="checkbox"/> Oil Well <input checked="" type="checkbox"/> Gas Well <input type="checkbox"/> Other <input checked="" type="checkbox"/> Single Zone <input type="checkbox"/> Multiple Zone		6. If Indian, Allottee or Tribe Name
2. Name of Operator Kukui Operating Company		7. If Unit or CA Agreement, Name and No.
3A. Address c/o Walsh Engineering, 7415 E. Main, Farmington, NM 87402		8. Lease Name and Well No. Angel Peak 11 #2S
3b. Phone No. (include area code) (505) 327-4892		9. API Well No. 3004532388
4. Location of Well (Report location clearly and in accordance with any State requirements. *) At surface 1810' FSL and 2400' FEL		10. Field and Pool, or Exploratory Basin Fruitland Coal
At proposed prod. Zone		11. Sec., T., R., M., or Blk. and Survey or Area J Sec. 11, T27N, R10W
14. Distance in miles and direction from nearest town or post office* 10 miles southeast of Bloomfield, NM		12. County or Parish San Juan
15. Distance from proposed* location to nearest property or lease line, ft. (Also to nearest drig. unit line, if any) 830		13. State NM
16. No. of Acres in lease 320+		17. Spacing Unit dedicated to this well 320 acres S/2
18. Distance from proposed location* to nearest well, drilling, completed, applied for, on this lease, ft. 500'		20. BLM/BIA Bond No. on file
21. Elevations (Show whether DF, KDB, RT, GL, etc.) 6054' GL		22. Approximate date work will start* July 1, 2004
		23. Estimated duration 1 week

24. Attachments

The following, completed in accordance with the requirements of Onshore Oil and Gas Order No. 1, shall be attached to this form:

- | | |
|---|---|
| 1. Well plat certified by a registered surveyor. | 4. Bond to cover the operations unless covered by an existing bond on file (see Item 20 above). |
| 2. A Drilling Plan. | 5. Operator certification. |
| 3. A Surface Use Plan (if the location is on National Forest System Lands, the SUPO shall be filed with the appropriate Forest Service Office). | 6. Such other site specific information and/or plans as may be required by the authorized office. |

25. Signature <i>Robert J. Varrhees</i>	Name (Printed/Typed) Robert J. Varrhees	Date 5/29/04
Title Vice President of Engineering and Development		
Approved by (Signature) <i>Mark J. Varrhees</i>	Name (Printed/Typed) Mark J. Varrhees	Date 8-3-04
Title AFM		
Office FEO		

Application approval does not warrant or certify that the applicant holds legal or equitable title to those rights in the subject lease which would entitle the applicant to conduct operations thereon.

Conditions of approval, if any, are attached.

Title 18 U.S.C. Section 1001 and Title 43 U.S.C. Section 1212, make it a crime for any person knowingly and willfully to make to any department or agency of the United States any false, fictitious or fraudulent statements or representations as to any matter within its jurisdiction.

*(Instructions on reverse)

NMOCD

DRILLING OPERATIONS AUTHORIZED ARE
SUBJECT TO COMPLIANCE WITH ATTACHED
"GENERAL REQUIREMENTS".

This act is subject to technical and
procedural review pursuant to 43 CFR 3165.3
and appeal pursuant to 43 CFR 3165.4

District I
PO Box 1980, Hobbs, NM 88241-1980

District II
PO Drawer 00, Artesia, NM 88211-0719

District III
1000 Rio Brazos Rd., Aztec, NM 87410

District IV
PO Box 2088, Santa Fe, NM 87504-2088

State of New Mexico
Energy, Minerals & Natural Resources Department

OIL CONSERVATION DIVISION
PO Box 2088
Santa Fe, NM 87504-2088

Form C-102
Revised February 21, 1994
Instructions on back
Submit to Appropriate District Office
State Lease - 4 Copies
Fee Lease - 3 Copies

☐ AMENDED REPORT

WELL LOCATION AND ACREAGE DEDICATION PLAT

API Number 30-045-32388		Pool Code 71629	Pool Name BASIN FRUITLAND COAL
Property Code 32337	Property Name ANGEL PEAK 11		Well Number 2S
OGRID No. 149678	Operator Name KUKUI OPERATING COMPANY		Elevation 6054'

10 Surface Location

UL or lot no.	Section	Township	Range	Lot 1/4	Feet from the	North/South line	Feet from the	East/West line	County
J	11	27N	10W		1810	SOUTH	2400	EAST	SAN JUAN

11 Bottom Hole Location If Different From Surface

UL or lot no.	Section	Township	Range	Lot 1/4	Feet from the	North/South line	Feet from the	East/West line	County
Dedicated Acres 320.0 Acres - (5/2)					Joint or Infill Y	Consolidation Code	Order No.		

NO ALLOWABLE WILL BE ASSIGNED TO THIS COMPLETION UNTIL ALL INTERESTS HAVE BEEN CONSOLIDATED OR A NON-STANDARD UNIT HAS BEEN APPROVED BY THE DIVISION

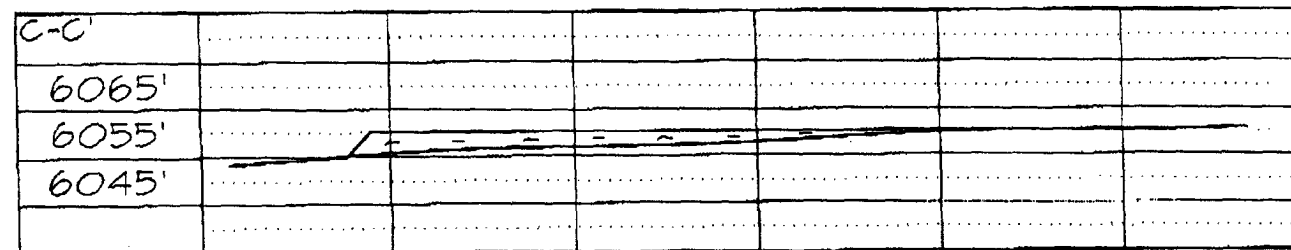
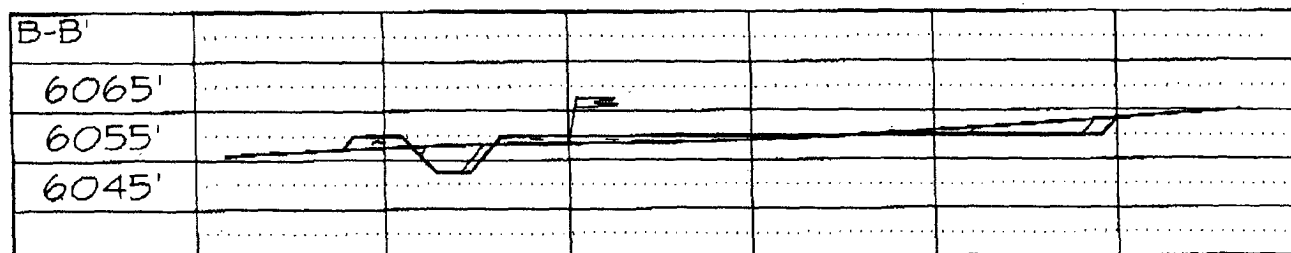
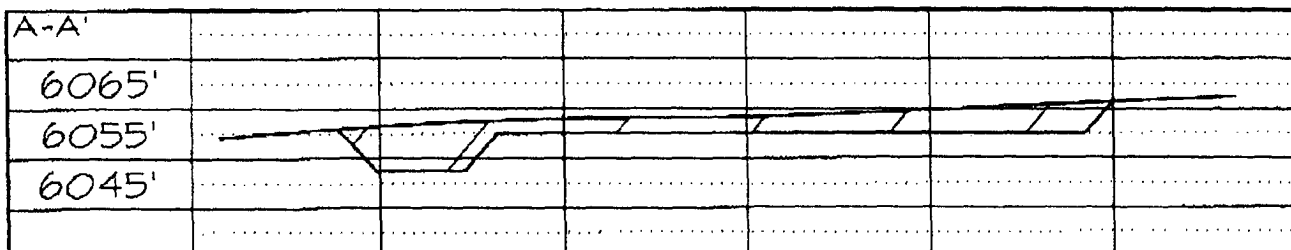
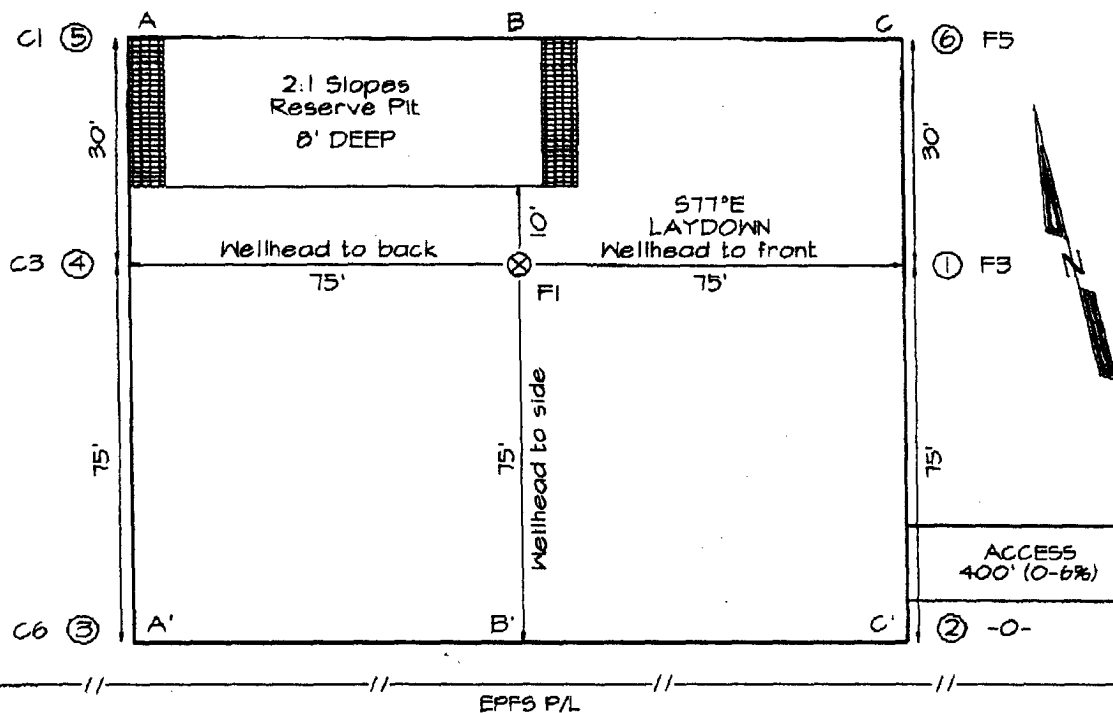
<p>15</p> <p>5274.06'</p> <p>5280.00'</p> <p>5277.36'</p> <p>2400'</p> <p>1810'</p> <p>11</p> <p>LEASE SF-071329</p> <p>RECEIVED 2004 MAY 28 AM 9:51 070 Edwards</p> <p>Oil Conservation Division MAY 2004</p>	<p>17 OPERATOR CERTIFICATION</p> <p>I hereby certify that the information contained herein is true and complete to the best of my knowledge and belief</p> <p><i>Paul C. Thompson</i> Signature Paul C. Thompson Printed Name AGENT Title 5/14/04 Date</p>
	<p>18 SURVEYOR CERTIFICATION</p> <p>I hereby certify that the well location shown on this plat was plotted from field notes of actual surveys made by me or under my supervision, and that the same is true and correct to the best of my belief.</p> <p>Date of Survey: MAY 3, 2004</p> <p>Signature and Seal of Professional Surveyor</p> <p><i>JASON C. EDWARDS</i> Certificate Number 15269</p>

KUKUI OPERATING COMPANY ANGEL PEAK 11 #2S
1810' FSL & 2400' FEL, SECTION 11, T27N, R10W, NMPM
SAN JUAN COUNTY, NEW MEXICO GROUND ELEVATION: 6054'

PLAT #2

PLAT NOTE:
 SURFACE OWNER
 Bureau of Land
 Management

LATITUDE: 36°35'15"
 LONGITUDE: 107°51'49"
 DATUM: NAD1927



Note: Contractor should call One-Call for location of any marked or unmarked buried pipelines or cables on well pad and/or access road at least two (2) working days prior to construction

Kukui Operating Company
OPERATIONS PLAN
Angel Peak 11 #2S

I. Location: 1810' FSL & 2400' FEL
Sec 11 T27N R10W
San Juan County, NM

Date: May 11, 2004

Field: Basin Fruitland Coal
Surface: BLM
Minerals: SF - 077329

Elev: GL 6054'

II. Geology: Surface formation _ Nacimiento

A. Formation Tops	Depths
Ojo Alamo	980'
Kirtland	1120'
Fruitland	1675'
Pictured Cliffs	1935'
Total Depth	2135'

Estimated depths of anticipated water, oil, gas, and other mineral bearing formations which are expected to be encountered:

Water and gas - 1675' and 1935'.

B. Logging Program: Induction/GR and neutron/density logs at TD.

C. No over pressured zones are expected in this well. No H₂S zones will be penetrated in this well. Max. BHP = 500 psig.

III. Drilling

A. Contractor:

B. Mud Program:

The surface hole will be drilled with a fresh water mud.

The production hole will be drilled with a fresh water polymer mud. The weighting material will be drill solids or if conditions dictate, barite. The maximum mud weight expected is 8.5 ppg.

C. Minimum Blowout Control Specifications:

Double ram type or annular type 2000 psi working pressure BOP with a rotating head. See the attached exhibits (#1 and #2) for details on the BOP equipment. All ram type preventers and related equipment will be hydraulically tested at nipple-up and after any use under pressure to 600 psi.

C. Cont.

The blind rams will be hydraulically activated and checked for operational readiness each time pipe is pulled out of the hole. All checks of the BOP stack and equipment will be noted on the daily drilling report. The BOP equipment will include a floor safety valve and choke manifold all rated to 2000 psi. The length of the Kelly does not allow enough room for a Kelly cock.

IV. Materials

A. Casing Program:

Hole Size	Depth	Casing Size	Wt. & Grade
8-3/4"	120'	7"	20# K-55
6-1/4"	2135'	4-1/2"	10.5# K-55

B. Float Equipment:

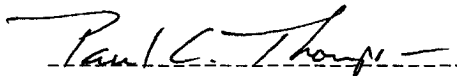
a) Surface Casing: None

b) Production Casing: 4-1/2" cement guide shoe and self fill insert float collar. Place float one joint above shoe. Five centralizers spaced every other joint above shoe and five turbolizers every fifth joint from the top of the well.

V. Cementing:

Surface casing: 7" - Use 30 sx (36 cu. ft.) of Cl "B" with 2% CaCl₂ (Yield = 1.18 cu. ft./sk; slurry weight = 15.6 PPG). 100% excess to circulate cement to surface. WOC 12 hours. Pressure test surface casing to 600 psi for 30 min.

Production Casing: 4-1/2" - Before cementing circulate hole with at least 1-1/2 hole volumes of mud. Precede cement with 30 bbls of fresh water. Lead with 155x (319 cu.ft) of Cl "B" with 2% SMS, 1/4#/sk. celloflake. (Yield = 2.06 cu.ft./sk; slurry weight = 12.5 PPG). Tail with 100 sx (118 cu.ft.) of Cl "B" with 2% CaCl₂, and 1/4#/sk. celloflake/sk. (Yield = 1.18 cu. ft./sk; slurry weight = 15.6 PPG) Total cement volume is 437 cu.ft. (100% excess to circulate cement to surface).


Paul C. Thompson, P.E.

Kukui Operating Company

Well Control Equipment Schematic for 2M Service

Attachment to Drilling Technical Program

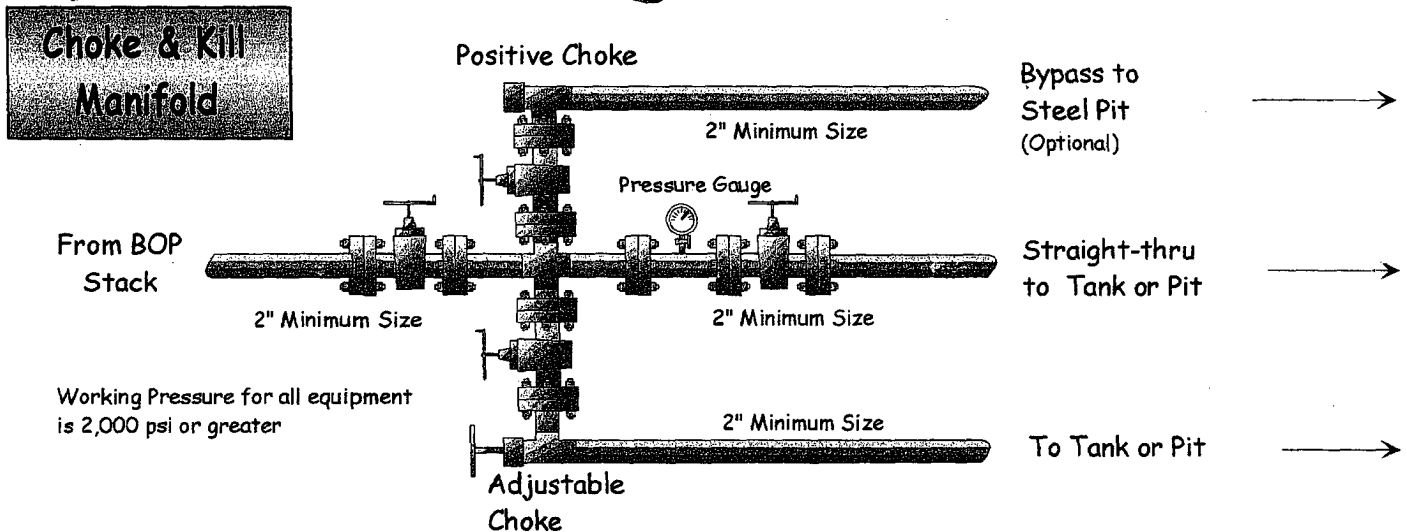
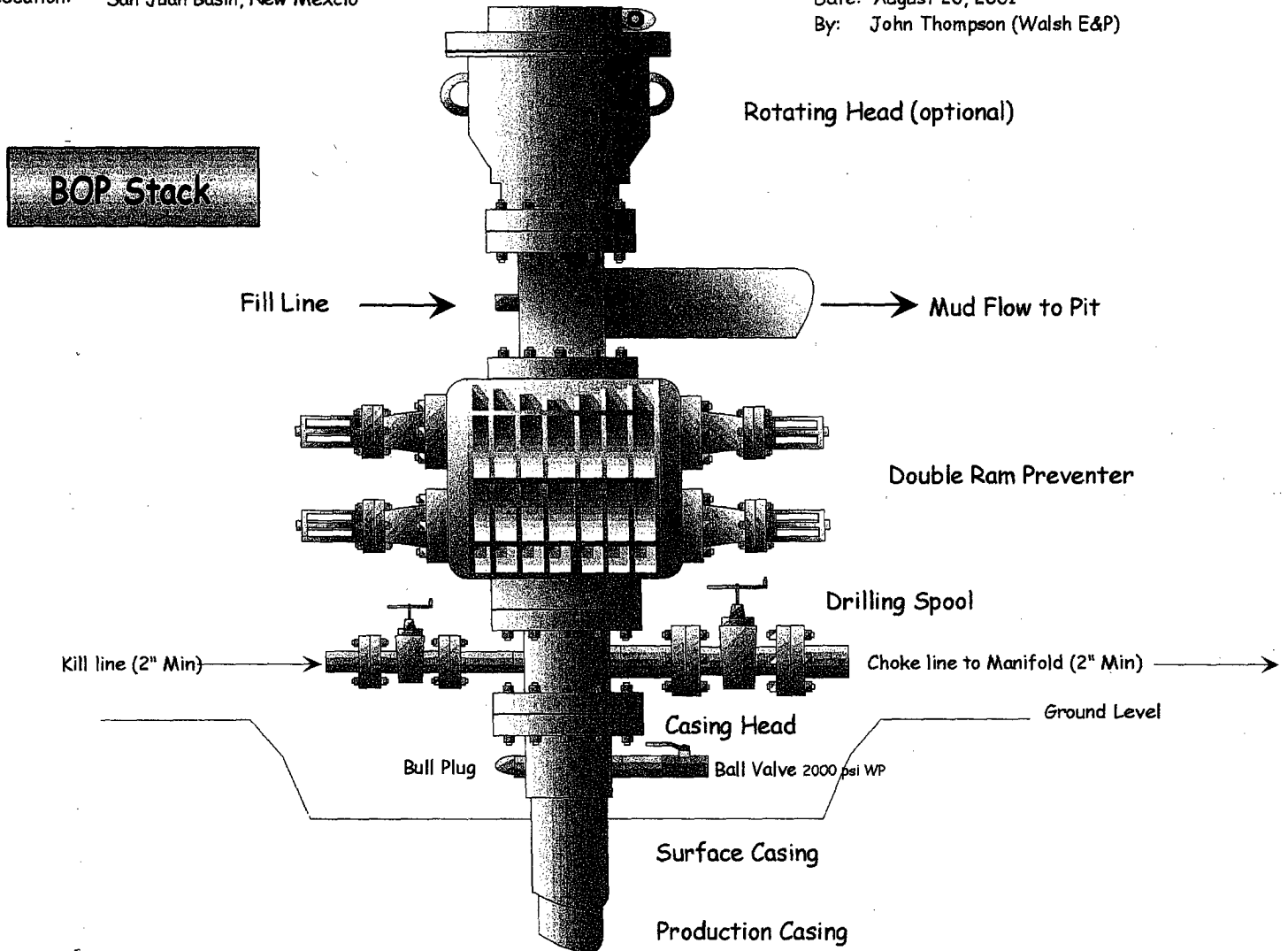
Typical BOP setup

EXHIBIT #1

Location: San Juan Basin, New Mexico

Date: August 20, 2001

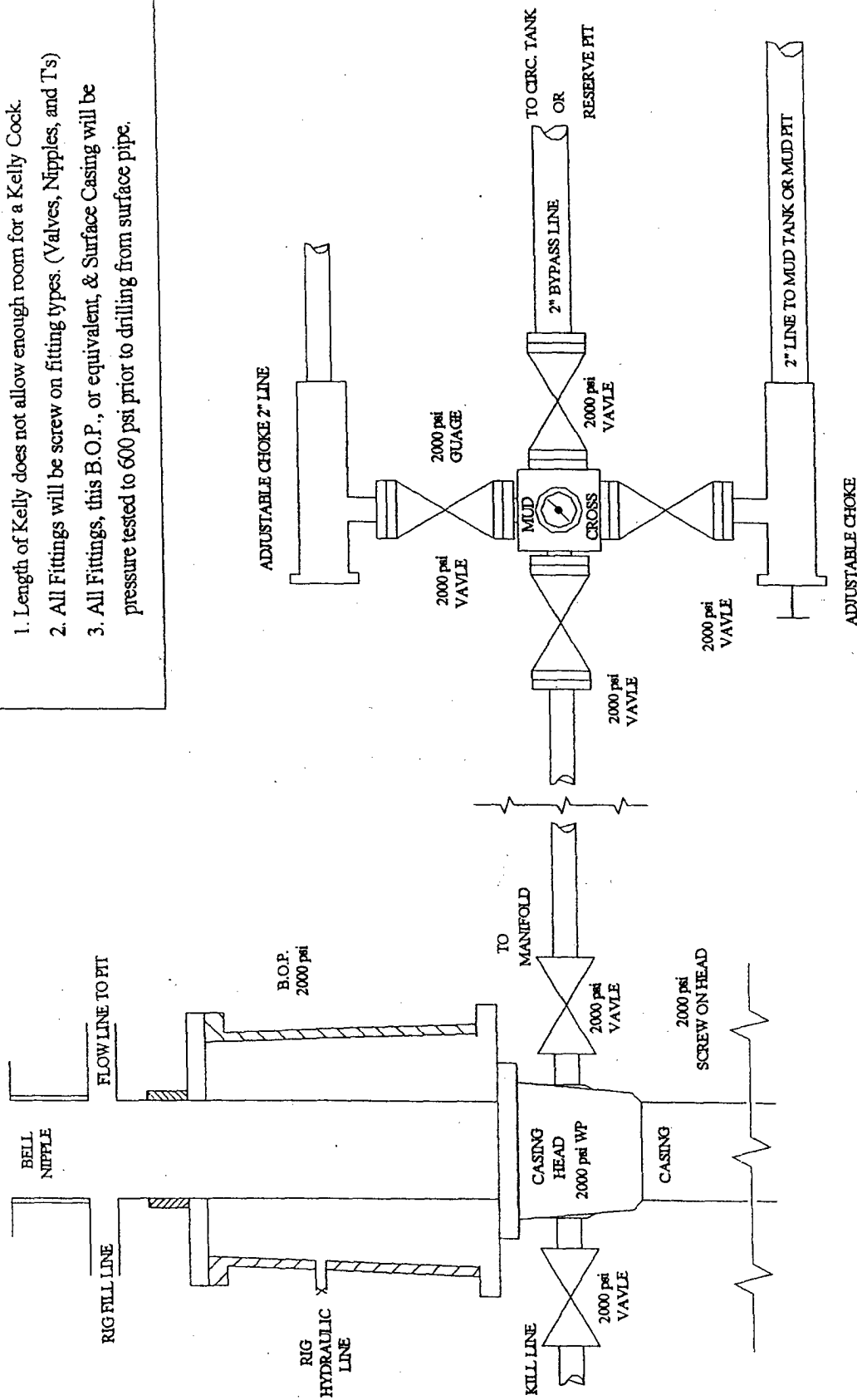
By: John Thompson (Walsh E&P)



BLOW OUT PREVENTER (B.O.P.)

Notes:

1. Length of Kelly does not allow enough room for a Kelly Cock.
2. All Fittings will be screw on fitting types. (Valves, Nipples, and T's)
3. All Fittings, this B.O.P., or equivalent, & Surface Casing will be pressure tested to 600 psi prior to drilling from surface pipe.



** 2000 psi Rubber hose will be used from Well Head to Manifold
& from Well Head to Kill Line.