

District I
 PO Box 1980, Hobbs NM 88241-1980
 District II
 PO Drawer KK, Artesia, NM 87211-0719
 District III
 1000 Rio Brazos Rd., Aztec, NM 87410
 District IV
 PO Box 2088, Santa Fe, NM 87504-2088

State of New Mexico
 Energy, Minerals & Natural Resources Department
OIL CONSERVATION DIVISION
 PO Box 2088
 Santa Fe, NM 87504-2088

Revised February 2003
 Instructions on
 Submit to Appropriate District Of
 State Lease - 4 Co
 Fee Lease - 3 Co

AMENDED REPORT

WELL LOCATION AND ACREAGE DEDICATION PLAT

¹ APT Number 30-045-32122		² Pool Code 71629		³ Pool Name Basin Fruitland Coal	
⁴ Property Code 000961		⁵ Property Name Pritchard B			⁶ Well Number # 5S
⁷ OGRID No. 000778		⁸ Operator Name BP AMERICA PRODUCTION COMPANY			⁹ Elevation 6088

¹⁰ Surface Location

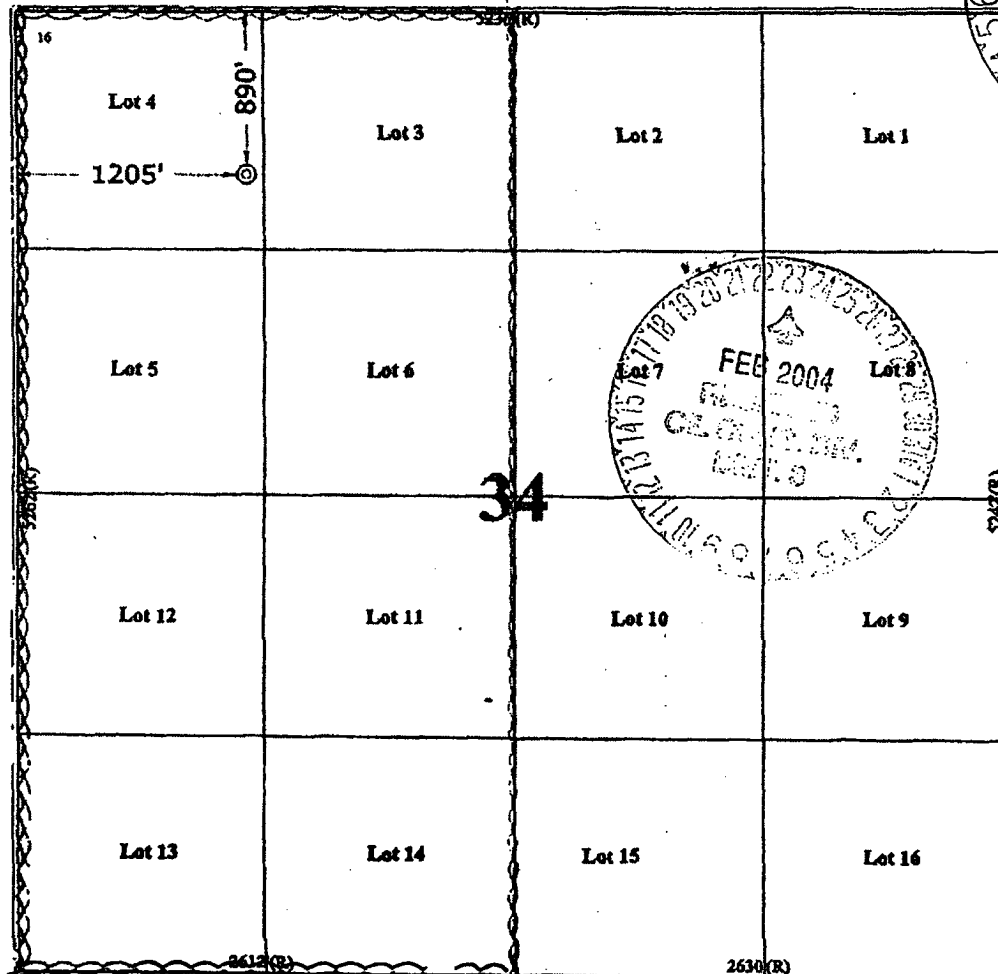
UL or Lot No.	Section	Township	Range	Lot Lin	Feet from the	North/South line	Feet from the	East/West line	County
D (Lot 4)	34	31 N	9 W		890	NORTH	1205	WEST	SAN JUAN

Bottom Hole Location If Different From Surface

UL or lot no.	Section	Township	Range	Lot Lin	Feet from the	North/South line	Feet from the	East/West line	County

¹¹ Dedicated Acres 315.47	¹² Joint or Infill	¹³ Consolidation Code	¹⁴ Order No.
---	-------------------------------	----------------------------------	-------------------------

NO ALLOWABLE WILL BE ASSIGNED TO THIS COMPLETION UNTIL ALL INTERESTS HAVE BEEN CONSOLIDATED OR A NON-STANDARD UNIT HAS BEEN APPROVED BY THE DIVISION



¹⁵ OPERATOR CERTIFICATION
 I hereby certify that the information contained here is true and complete to the best of my knowledge and belief.
 AUG 12 2004

Signature: *Cherry Hlava*
 Printed Name: Cherry Hlava
 Title: Regulatory Analyst
 Date: 1-6-04

¹⁶ SURVEYOR CERTIFICATION
 I hereby certify that the well location shown on this plat was plotted from field notes of actual surveys made by me or under my supervision, and that the same is true and correct to the best of my belief.
 September 25, 2003

Date of Survey: September 25, 2003
 Signature and Seal of Professional Surveyor: *Cary D. Vann*
 Seal: GARY D. VANN, REGISTERED PROFESSIONAL LAND SURVEYOR, NEW MEXICO, 7016
 Certificate Number: 7016