

District I  
1625 N. French Dr., Hobbs, NM 88240  
District II  
1501 W. Grand Avenue, Artesia, NM 88210  
District III  
1000 Rio Brazos Road, Aztec, NM 87410  
District IV  
1220 S. St. Francis Dr., Santa Fe, NM 87505

State of New Mexico  
Energy Minerals and Natural Resources

Form C-101  
May 27, 2004

Oil Conservation Division  
1220 South St. Francis Dr.  
Santa Fe, NM 87505

Submit to appropriate District Office

☐ AMENDED REPORT

APPLICATION FOR PERMIT TO DRILL, RE-ENTER, DEEPEN, PLUGBACK, OR ADD A ZONE

<sup>1</sup> Operator Name and Address XTO ENERGY INC 2700 FARMINGTON AVE. BLDG K, STE 1 FARMINGTON, NM 87401		<sup>6</sup> OGRID Number 167067
<sup>3</sup> Property Code 22597	<sup>5</sup> Property Name BRUINGTON GAS COM "C"	<sup>7</sup> API Number 045-32541
<sup>9</sup> Proposed Pool 1 Basin Dakota		<sup>8</sup> Well No. #4
<sup>10</sup> Proposed Pool 2		

<sup>7</sup> Surface Location

UL or lot no.	Section	Township	Range	Lot Idn	Feet from the	North/South line	Feet from the	East/West line	County
F	21	30N	11W		1,700'	NORTH	1,895'	WEST	SAN JUAN

<sup>8</sup> Proposed Bottom Hole Location If Different From Surface

UL or lot no.	Section	Township	Range	Lot Idn	Feet from the	North/South line	Feet from the	East/West line	County

Additional Well Information

<sup>11</sup> Work Type Code N	<sup>12</sup> Well Type Code G	<sup>13</sup> Cable/Rotary R	<sup>14</sup> Lease Type Code P (FEE)	<sup>15</sup> Ground Level Elevation 5,752' GROUND LEVEL
<sup>16</sup> Multiple NO	<sup>17</sup> Proposed Depth 7,000'	<sup>18</sup> Formation DAKOTA	<sup>19</sup> Contractor AZTEC WELL SERVICE	<sup>20</sup> Spud Date WINTER, 2005
Depth to Groundwater GREATER THAN 100'		Distance from nearest fresh water well OVER 1 MILE		Distance from nearest surface water OVER 3 MILES
Pit: Liner: Synthetic <input checked="" type="checkbox"/> 12_mils thick Clay <input type="checkbox"/> Pit Volume: _____ bbls Drilling Method: ROTARY DRILLING WITH MUD				
Closed-Loop System <input type="checkbox"/> Fresh Water <input checked="" type="checkbox"/> Brine <input type="checkbox"/> Diesel/Oil-based <input type="checkbox"/> Gas/Air <input type="checkbox"/>				

<sup>21</sup> Proposed Casing and Cement Program

Hole Size	Casing Size	Casing weight/foot	Setting Depth	Sacks of Cement	Estimated TOC
12-1/4"	9-5/8"	36.0#/FT	360' KB	200 SX	SURFACE
7-7/8"	5-1/2"	17.0#/FT	7,000'	900 SX	SURFACE

<sup>22</sup> Describe the proposed program. If this application is to DEEPEN or PLUG BACK, give the data on the present productive zone and proposed new productive zone. Describe the blowout prevention program, if any. Use additional sheets if necessary.

Drill to 360' KB. Run new 9-5/8" casing. Cement casing w/±200 sx Type III cement w/2% CC & 1/4#/sx cello (mixed at 14.5 ppg & 1.41 cuft/sx). Continue to pump cement to surface until cement is circ to surface. Disp cement with fresh water. NU BOPE. Mix mud. Drill ahead with 7-7/8" open hole.

Drill to 7,000' KB (TD). Log well. Run new 5-1/2", 17.0#, J-55, LT&C casing to bottom. Cement casing with (lead) ±750 sx Premium Lite cement with 6% gel, dispersant, fluid loss & 1/4#/sx celloflake (mixed at 12.5 ppg & 2.07 cuft/sx) followed by (tail) 150 sx Class "H" cement with dispersant, fluid loss and bonding additives (mixed at 15.6 ppg & 1.18 cuft/sx). Attempt to circ cement to surface.

See enclosed drawing for BOP stack configuration.

<sup>23</sup> I hereby certify that the information given above is true and complete to the best of my knowledge and belief. I further certify that the drilling pit will be constructed according to NMOCD guidelines ☒, a general permit ☐, or an (attached) alternative OCD-approved plan ☐.

Printed name: Jeffrey W. Patton

Title: Drilling Engineer

E-mail Address: Jeff\_Patton@xtoenergy.com

Date: 8/19/04

Phone: (505) 324-1090

OIL CONSERVATION DIVISION

Approved by:

Title:

Approval Date:

Conditions of Approval Attached ☐

Expiration Date:

DISTRICT I  
1625 N. Fench Dr., Hobbs, N.M. 88240

DISTRICT II  
1301 W. Grand Avenue, Artesia, N.M. 88210

DISTRICT III  
1000 Rio Brazos Rd., Aztec, N.M. 87410

DISTRICT IV  
1220 South St. Francis Dr., Santa Fe, NM 87505

State of New Mexico  
Energy, Minerals & Natural Resources Department

OIL CONSERVATION DIVISION  
1220 South St. Francis Dr.  
Santa Fe, NM 87504-2088

Form C-102  
Revised June 10, 2003  
Instructions on back  
Submit to Appropriate District Office  
State Lease - 4 Copies  
Fee Lease - 3 Copies

☐ AMENDED REPORT

WELL LOCATION AND ACREAGE DEDICATION PLAT

<sup>1</sup> API Number 30-045-32541	<sup>2</sup> Pool Code 71599	<sup>3</sup> Pool Name Basin Dakota
<sup>4</sup> Property Code 22597	<sup>5</sup> Property Name BRUINGTON GAS COM "C"	<sup>6</sup> Well Number 4
<sup>7</sup> OGRIID No. 167067	<sup>8</sup> Operator Name XTO ENERGY INC.	<sup>9</sup> Elevation 5752

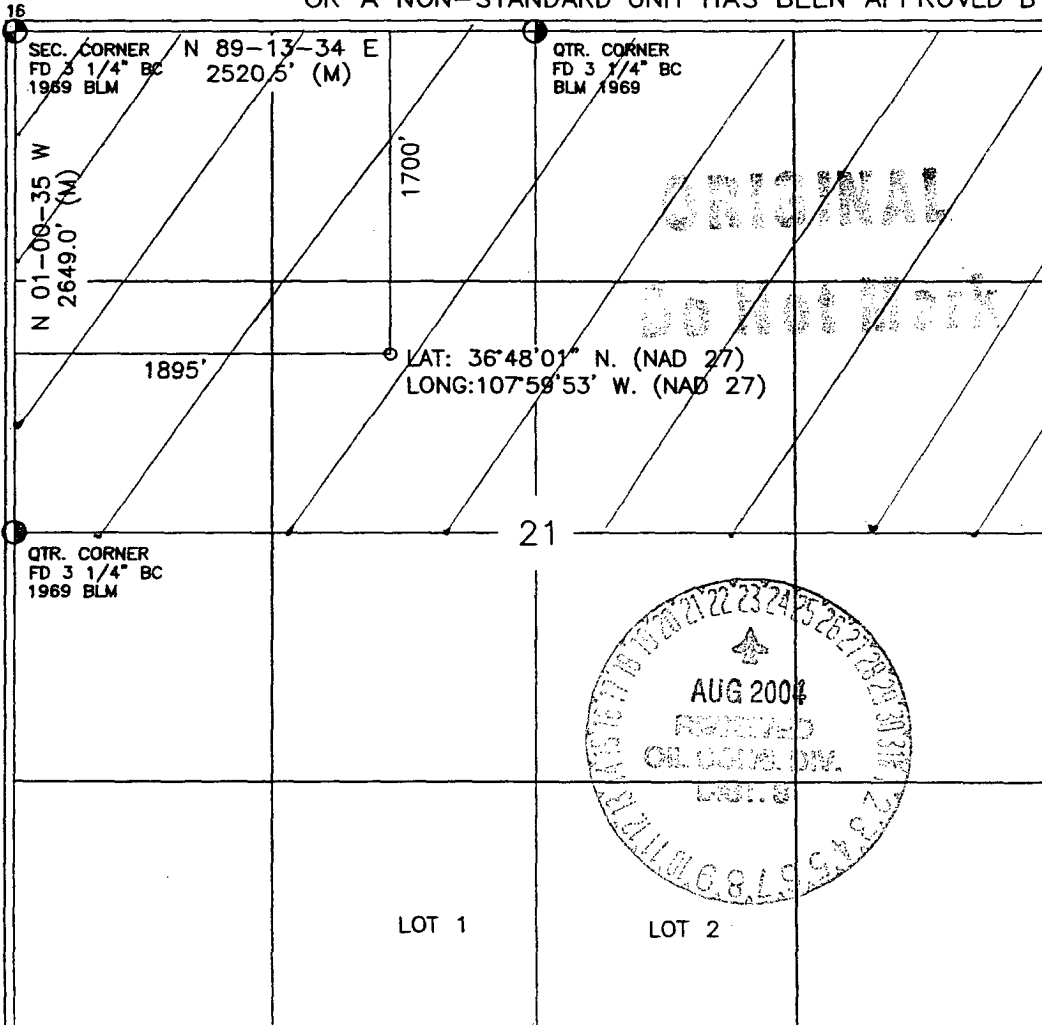
<sup>10</sup> Surface Location

UL or lot no.	Section	Township	Range	Lot Idn	Feet from the	North/South line	Feet from the	East/West line	County
F	21	30-N	11-W		1700	NORTH	1895	WEST	SAN JUAN

<sup>11</sup> Bottom Hole Location If Different From Surface

UL or lot no.	Section	Township	Range	Lot Idn	Feet from the	North/South line	Feet from the	East/West line	County
<sup>12</sup> Dedicated Acres 320 n/a			<sup>13</sup> Joint or Infill I		<sup>14</sup> Consolidation Code		<sup>15</sup> Order No.		

NO ALLOWABLE WILL BE ASSIGNED TO THIS COMPLETION UNTIL ALL INTERESTS HAVE BEEN CONSOLIDATED  
OR A NON-STANDARD UNIT HAS BEEN APPROVED BY THE DIVISION



17 OPERATOR CERTIFICATION

I hereby certify that the information contained herein is true and complete to the best of my knowledge and belief

Signature: Kelly H. Small  
Printed Name: Kelly H. Small  
Title: Drilling Assistant  
Date: 5/10/04

18 SURVEYOR CERTIFICATION

I hereby certify that the well location shown on this plat was plotted from field notes of actual surveys made by me or under my supervision, and that the same is true and correct to the best of my belief.

APPROVED: JAMES A. VIKONICH  
Date of Survey: 5/10/04  
Signature of Registered Professional Surveyor: [Signature]  
Certificate Number: 14831

# BOP SCHEMATIC FOR DRILLING OPERATIONS CLASS 1 (2M) NORMAL PRESSURE

## TESTING PROCEDURE

### 1. Test BOP after installation:

Pressure test BOP to 200-300  
psig (low pressure) for 5 min.

Test BOP to Working Press or  
to 70% internal yield of surf csg  
(10 min).

### 2. Test operation of (both) rams on every trip.

### 3. Check and record Accumulator pressure on every tour.

### 4. Re-pressure test BOP stack after changing out rams.

### 5. Have kelly cock valve with handle available.

### 6. Have safety valve and subs to fit all sizes of drill string.

ROTATING HEAD  
(OPTIONAL)

FILL UP LINE

FLOW LINE  
TO PIT

PIPE  
RAMS

BLIND  
RAMS

TO CHOKE  
MANIFOLD  
2" dia min.

See Choke Manifold drawing for  
specifications

HCR VALVE (OPTIONAL)

2" (MIN) FULL OPENING  
VALVE

MUD CROSS

KILL LINE  
2" dia min.

\*\* Remove check or ball  
from check valve and  
press test to same press  
as BOP's. \*\*

