

**District I**  
1625 N. French Dr., Hobbs, NM 88240

**District II**  
1301 W. Grand Avenue, Artesia, NM 88210

**District III**  
1000 Rio Brazos Rd., Aztec, NM 87410

**District IV**  
1220 S. St. Francis Dr., Santa Fe, NM 87505

State of New Mexico  
Energy, Minerals & Natural Resources Department  
**OIL CONSERVATION DIVISION**  
1220 South St. Francis Dr.  
Santa Fe, NM 87505

Form C-102  
Revised August 15, 2000  
Submit to Appropriate District Office  
State Lease - 4 Copies  
Fee Lease - 3 Copies

☐ AMENDED REPORT

**WELL LOCATION AND ACREAGE DEDICATION PLAT**

<sup>1</sup> API Number 30-045-28742		<sup>2</sup> Pool Code 71629		<sup>3</sup> Pool Name BASIN FRUITLAND COAL	
<sup>4</sup> Property Code 009753		<sup>5</sup> Property Name MCCARTHY 29-9-30			<sup>6</sup> Well Number 1
<sup>7</sup> OGRID No. 020572		<sup>8</sup> Operator Name SG INTERESTS I, LTD.			<sup>9</sup> Elevation 5705

<sup>10</sup> Surface Location

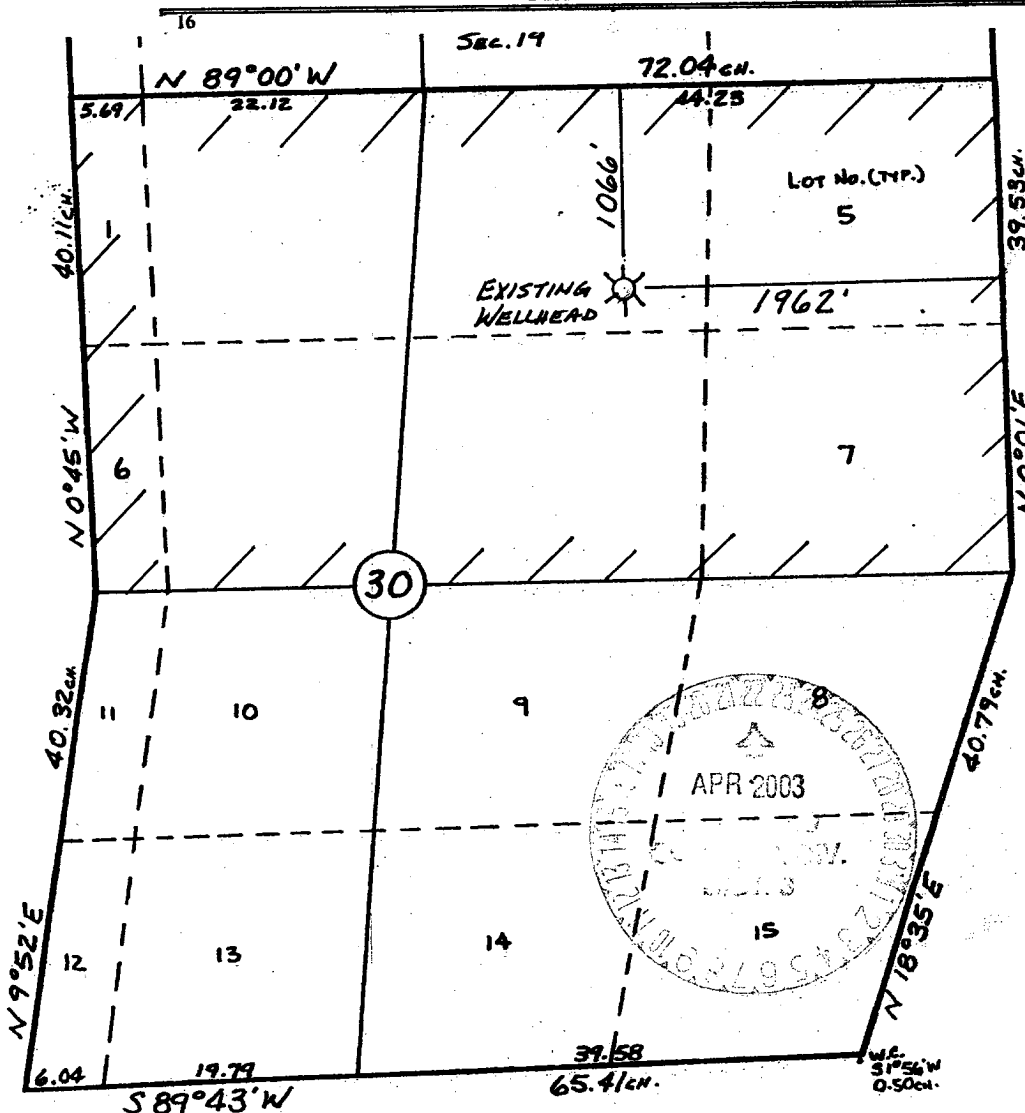
UL or lot no.	Section	Township	Range	Lot Idn	Feet from the	North/South line	Feet from the	East/West line	County
B	30	29 N	9 W		1066	North	1962	East	San Juan

<sup>11</sup> Bottom Hole Location If Different From Surface

UL or lot no.	Section	Township	Range	Lot Idn	Feet from the	North/South line	Feet from the	East/West line	County

<sup>12</sup> Dedicated Acres 272.78	<sup>13</sup> Joint or Infill	<sup>14</sup> Consolidation Code	<sup>15</sup> Order No.
---	-------------------------------	----------------------------------	-------------------------

NO ALLOWABLE WILL BE ASSIGNED TO THIS COMPLETION UNTIL ALL INTERESTS HAVE BEEN CONSOLIDATED OR A NON-STANDARD UNIT HAS BEEN APPROVED BY THE DIVISION



**<sup>17</sup> OPERATOR CERTIFICATION**  
I hereby certify that the information contained herein is true and complete to the best of my knowledge and belief.

Signature: *[Signature]*  
Printed Name: ROBERT J. SAGLE  
Title: AGENT FOR SG INTERESTS  
Date: 4/17/03

**<sup>18</sup> SURVEYOR CERTIFICATION**  
I hereby certify that the well location shown on this plat was plotted from field notes of actual surveys made by me or under my supervision, and that the same is true and correct to the best of my belief.

Date of Survey: APR 16, 2003  
Signature and Seal of Professional Surveyor: *[Signature]*  
Certificate Number: 8466