

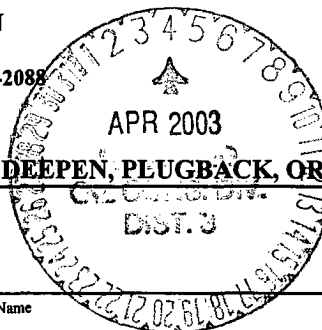
DISTRICT II
P.O. Drawer DD, Artesia, NM 88211-0719

DISTRICT III
1000 Rio Brazos Rd., Aztec, NM 87410

DISTRICT IV
P.O. Box 2088, Santa Fe, NM 87504-2088

Instructions on back
Submit to Appropriate District Office
State Lease - 6 Copies
Fee Lease - 5 Copies

OIL CONSERVATION DIVISION
PO BOX 2088
Santa Fe, NM 87504-2088



☐ AMENDED REPORT

APPLICATION FOR PERMIT TO DRILL, RE-ENTER, DEEPEN, PLUGBACK, OR ADD A ZONE

Operator Name and Address Energen Resources Corp. c/o Walsh Engineering and Production Corp. 7415 E. Main St., Farmington, NM 87402 (505) 327-4892		OGRID Number
Property Code 32227	Property Name FIFIELD	API Number 30-0 45-31611
		Well No. 800S

Surface Location

UL or lot no.	Section	Township	Range	Lot Idn	Feet from the	North/South Line	Feet from the	East/West Line	County
O	5	29N	11W		790	South	1615	East	San Juan

Proposed Bottom Hole Location If Different From Surface

UL or lot no.	Section	Township	Range	Lot Idn	Feet from the	North/South Line	Feet from the	East/West Line	County
Proposed Pool 1 Basin Fruitland Coal					Proposed Pool 2				

Work Type Code N	Well Type Code G	Cable/Rotary R	Lease Type Code P	Ground Level Elevation 5730'
Multiple No	Proposed Depth 2100'	Formation Pictured Cliffs	Contractor NA	Spud Date May 15, 2003

Proposed Casing and Cement Program

Hole Size	Casing Size	Casing weight/feet	Setting Depth	Sacks of Cement	Estimated TOC
8-3/4"	7"	20#	120' +/-	50 (59 cu.ft.)	Surface
6-1/4"	4-1/2"	10.5#	2100' +/-	155 sx + 100 sx	Surface

²² Describe the proposed program. If this application is to DEEPEN or PLUG BACK give the data on the present productive zone and proposed new productive zone. Describe the blowout prevention program, if any. Use additional sheets if necessary.

Energen Resources proposes to drill a vertical well at the above described location and test the Fruitland Coal formation. A 8-3/4" surface hole will be drilled to 120' where 7", 20# casing will set and cemented to surface with 50 sx (59 cu.ft.) of CI "B" cement with 1/4#/sk celloflake and 2% CaCl2. After WOC a 2000 psi double ram or annular preventer will be installed and pressure tested to 600 psi. A 6-1/4" hole will be drilled to approximately 2100' with a fresh water polymer mud system. Induction and density logs will be run at TD. 4-1/2", 10.5# casing will be run to TD and cemented to surface with 155 sx (319 cu.ft.) of CI "B" with 2% SMS and 1/4 #/sk celloflake, and 100 sx (118 cu.ft.) of CL "B" with 5#/sk gilsonite and 1/4#/sk celloflake. The Fruitland Coal formation will be selectively perforated and completed. The well will be connected to El Paso Field Services gathering system.

²³ I hereby certify that the information given above is true and complete to the best of my knowledge and belief.

Signature:

Printed name:

Paul C. Thompson, P.E.

Title:

Agent

Date:

04/01/03

Phone:

(505) 327-4892

OIL CONSERVATION DIVISION

Approved by:

Title:

DEPUTY OIL & GAS INSPECTOR, DIST. 31

Approval Date:

4 2003

Expiration Date:

APR - 4 2004

Conditions of Approval

Attached ☐

District I
PO Box 1980, Hobbs, NM 88241-1980

District II
PO Drawer DD, Artesia, NM 88211-0719

District III
1000 Rio Brazos Rd., Aztec, NM 87410

District IV
PO Box 2088, Santa Fe, NM 87504-2088

State of New Mexico
Energy, Minerals & Natural Resources Department

OIL CONSERVATION DIVISION
PO Box 2088
Santa Fe, NM 87504-2088

Form C-102
Revised February 21, 1994
Instructions on back
Submit to Appropriate District Office
State Lease - 4 Copies
Fee Lease - 3 Copies

☐ AMENDED REPORT

WELL LOCATION AND ACREAGE DEDICATION PLAT

*API Number 30-045-31611		*Pool Code 71629	*Pool Name BASIN FRUITLAND COAL
*Property Code 32227	*Property Name FIFIELD		*Well Number 800S
*GRID No. 162928	*Operator Name ENERGEN RESOURCES CORPORATION		*Elevation 5730

¹⁰ Surface Location

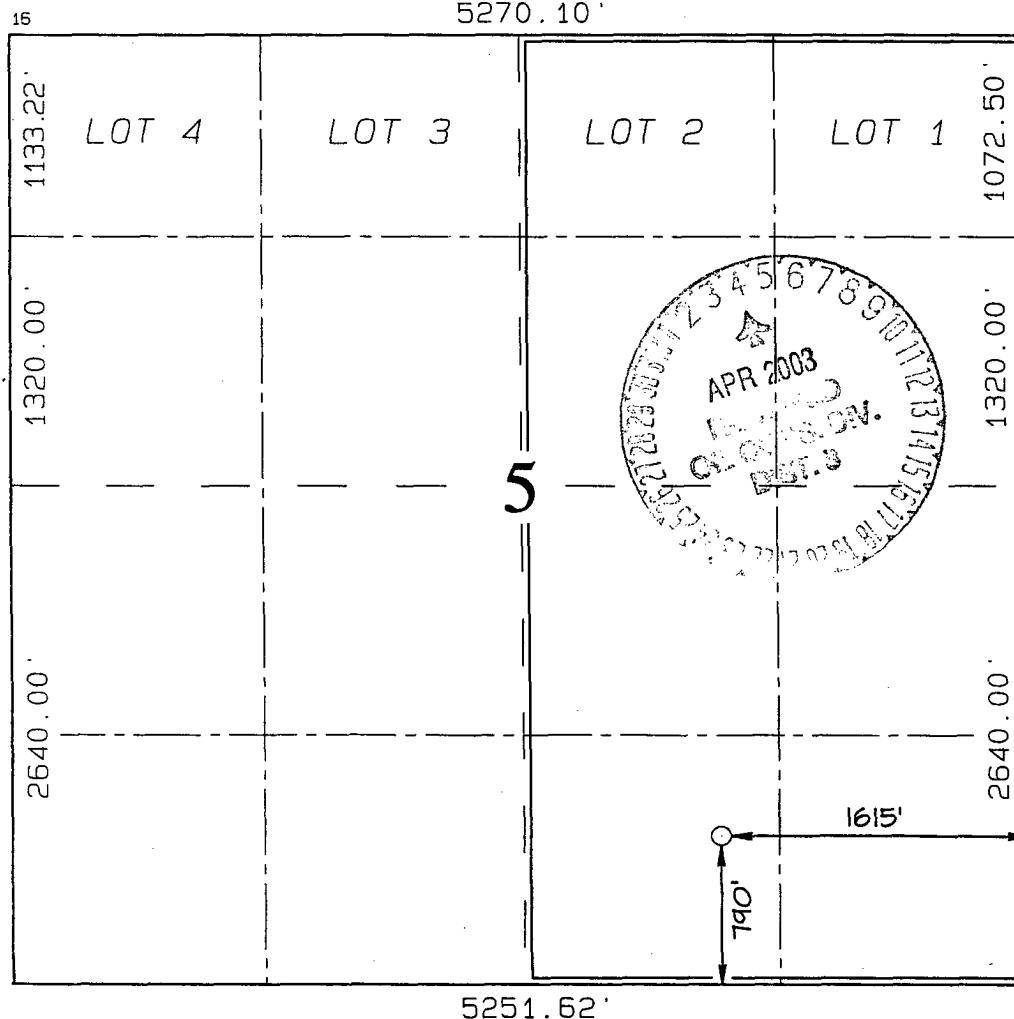
UL or lot no.	Section	Township	Range	Lot Idn	Feet from the	North/South line	Feet from the	East/West line	County
0	5	29N	11W		790	SOUTH	1615	EAST	SAN JUAN

¹¹ Bottom Hole Location If Different From Surface

UL or lot no.	Section	Township	Range	Lot Idn	Feet from the	North/South line	Feet from the	East/West line	County

¹² Dedicated Acres 305.92 ACRES - (E/2)	¹³ Joint or Infill Y	¹⁴ Consolidation Code	¹⁵ Order No.
--	---	----------------------------------	-------------------------

NO ALLOWABLE WILL BE ASSIGNED TO THIS COMPLETION UNTIL ALL INTERESTS HAVE BEEN CONSOLIDATED OR A NON-STANDARD UNIT HAS BEEN APPROVED BY THE DIVISION



¹⁷ OPERATOR CERTIFICATION

I hereby certify that the information contained herein is true and complete to the best of my knowledge and belief

Paul C. Thompson
Signature

PAUL C. THOMPSON
Printed Name

AGENT
Title

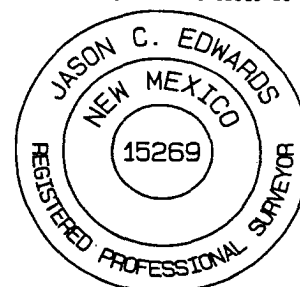
APRIL 1, 2003
Date

¹⁸ SURVEYOR CERTIFICATION

I hereby certify that the well location shown on this plat was plotted from field notes of actual surveys made by me or under my supervision, and that the same is true and correct to the best of my belief.

Survey Date: **DECEMBER 31, 2002**

Signature and Seal of Professional Surveyor



JASON C. EDWARDS
Certificate Number 15269