

District I
1625 N. French Dr., Hobbs, NM 88240
District II
1301 W. Grand Avenue, Artesia, NM 88210
District III
1000 Rio Brazos Road, Aztec, NM 87410
District IV
1220 S. St. Francis Dr., Santa Fe, NM 87505

State of New Mexico
Energy Minerals and Natural Resources

Form C-101
May 27, 2004

Oil Conservation Division
1220 South St. Francis Dr.
Santa Fe, NM 87505

Submit to appropriate District Office

☐ AMENDED REPORT

APPLICATION FOR PERMIT TO DRILL, RE-ENTER, DEEPEN, PLUGBACK, OR ADD A ZONE

Operator Name and Address Great Western Drilling Company c/o Walsh Engineering, 7415 E. Main St., Farmington, NM 87402		OGRID Number 009338
Property Code 4775	Property Name J.E. Decker	Well No. 12
Proposed Pool 1 Basin Fruitland Coal		Proposed Pool 2

Surface Location

UL or lot no. I	Section 12	Township 32N	Range 12W	Lot Idn	Feet from the 1965	North/South line South	Feet from the 660	East/West line East	County San Juan
--------------------	---------------	-----------------	--------------	---------	-----------------------	---------------------------	----------------------	------------------------	--------------------

Proposed Bottom Hole Location If Different From Surface

UL or lot no.	Section	Township	Range	Lot Idn	Feet from the	North/South line	Feet from the	East/West line	County
---------------	---------	----------	-------	---------	---------------	------------------	---------------	----------------	--------

Additional Well Information

Work Type Code N	Well Type Code G	Cable/Rotary R	Lease Type Code P	Ground Level Elevation 6385'
Multiple N	Proposed Depth 3062	Formation Pictured Cliffs	Contractor	Spud Date 12/15/04
Depth to Groundwater: Greater Than 50'		Distance from nearest fresh water well: More than 1000'		Distance from nearest surface water: Greater than 1000'
Pit: Liner: Synthetic <input checked="" type="checkbox"/> 12 mils thick Clay <input type="checkbox"/> Pit Volume: 1500 bbls Drilling Method: Closed-Loop System <input type="checkbox"/> Fresh Water <input checked="" type="checkbox"/> Brine <input type="checkbox"/> Diesel/Oil-based <input type="checkbox"/> Gas/Air <input type="checkbox"/>				

Proposed Casing and Cement Program

Hole Size	Casing Size	Casing weight/foot	Setting Depth	Sacks of Cement	Estimated TOC
8-3/4"	7"	20#, J-55	200'	55sx (65 cu.ft.)	Surface
6-1/4"	4-1/2"	10.5#, J-55	3062'	250 sx (515 cu.ft.)	Surface
				100 sx (118 cu.ft.)	

Describe the proposed program. If this application is to DEEPEN or PLUG BACK, give the data on the present productive zone and proposed new productive zone. Describe the blowout prevention program, if any. Use additional sheets if necessary.

Great Western Drilling proposes to drill a vertical well at the above described location and test the Basin Fruitland Coal formation. A 8-3/4" surface hole will be drilled to 200' where 7", 20# casing will be set and cemented to surface with 65 cu.ft. of neat cement. After WOC, a 2000 psi double ram or annular preventer will be installed and pressure tested to 600 psi. A 6-1/4" hole will be drilled with mud to approximately 3062'. Open hole logs will be run. 4-1/2" production casing will be run and cemented to surface with 515 cu.ft. of CI "B" cement with 2% SMS and 1/4 #/sk Celloflake and 118 cu.ft. of neat cement. The Fruitland Coal formation will be selectively perforated and completed Ojo Alamo - 947'; Kirtland - 1007'; Fruitland - 2437'; Pictured Cliffs - 2877'. The well will be connected to El Paso Field Services gathering system.

I hereby certify that the information given above is true and complete to the best of my knowledge and belief. I further certify that the drilling pit will be constructed according to NMOCD guidelines ☒, a general permit ☐, or an (attached) alternative OCD-approved plan ☐.

Printed name: Paul C. Thompson, P.E.

Title: Agent

E-mail Address: paul@walsheng.net

Date: 11/11/04

Phone: (505) 327-4892

OIL CONSERVATION DIVISION

Approved by:

Title:

Approval Date: NOV 15 2004

Expiration Date: NOV 15 2005

Conditions of Approval Attached ☐

District I
PO Box 1980, Hobbs, NM 88241-1980

District II
PO Drawer DD, Artesia, NM 88211-0719

District III
1000 Rio Brazos Rd., Aztec, NM 87410

District IV
PO Box 2088, Santa Fe, NM 87504-2088

State of New Mexico
Energy, Minerals & Natural Resources Department

OIL CONSERVATION DIVISION
PO Box 2088
Santa Fe, NM 87504-2088

Form C-102
Revised February 21, 1994
Instructions on back
Submit to Appropriate District Office
State Lease - 4 Copies
Fee Lease - 3 Copies

☐ AMENDED REPORT

WELL LOCATION AND ACREAGE DEDICATION PLAT

*API Number 30-045-32669		*Pool Code 71629	*Pool Name BASIN FRUITLAND COAL
*Property Code 4975	*Property Name J.E. DECKER		*Well Number 12
*OGRID No. 9338	*Operator Name GREAT WESTERN DRILLING		*Elevation 6385'

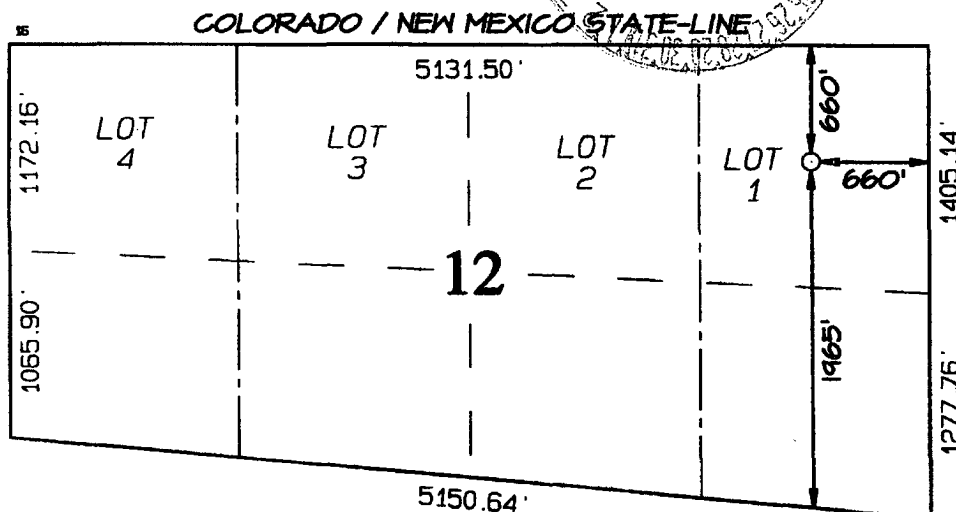
10 Surface Location

UL or lot no.	Section	Township	Range	Lot Idn	Feet from the	North/South line	Feet from the	East/West line	County
I	12	32N	12W		1965	SOUTH	660	EAST	SAN JUAN

11 Bottom Hole Location If Different From Surface

UL or lot no.	Section	Township	Range	Lot Idn	Feet from the	North/South line	Feet from the	East/West line	County
*Dedicated Acres 336 Acres A11					*Joint or Infill Y	*Consolidation Code	*Order No.		

NO ALLOWABLE WILL BE ASSIGNED TO THIS COMPLETION UNTIL ALL INTERESTS HAVE BEEN CONSOLIDATED
OR A NON-STANDARD UNIT HAS BEEN APPROVED BY THE DIVISION



17 OPERATOR CERTIFICATION

I hereby certify that the information
contained herein is true and complete
to the best of my knowledge and belief

Paul C. Thompson
Signature

PAUL C. THOMPSON
Printed Name

AGENT
Title

11/11/04
Date

18 SURVEYOR CERTIFICATION

I hereby certify that the well location
shown on this plat was plotted from field
notes of actual surveys made by me or under
my supervision, and that the same is true
and correct to the best of my belief

Date of Survey: **JULY 23, 2004**

Signature and Seal of Professional Surveyor

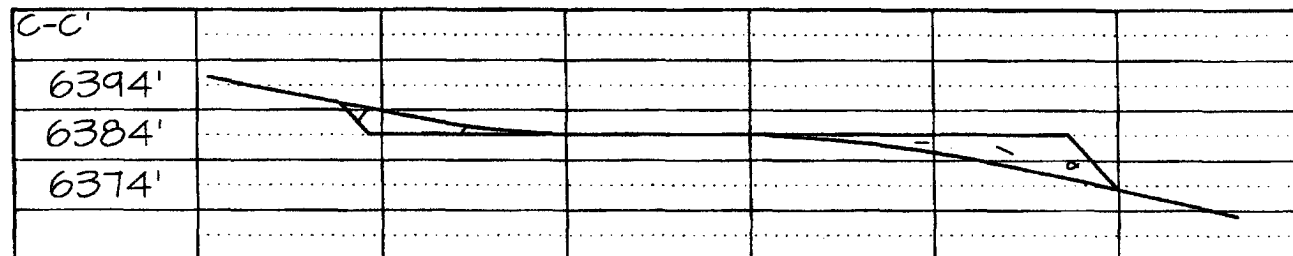
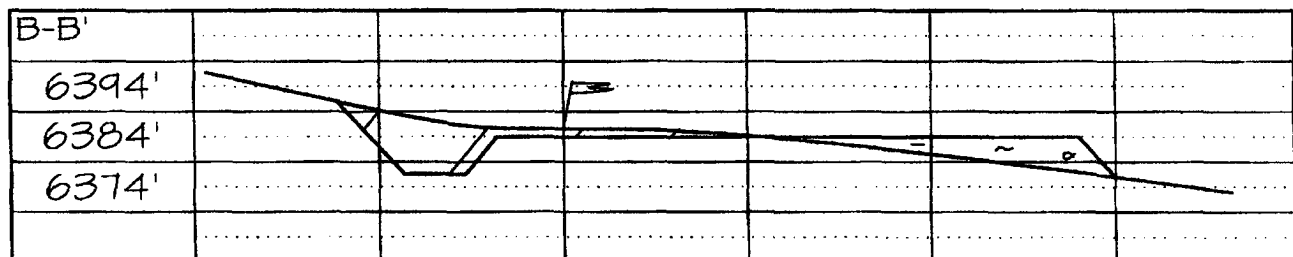
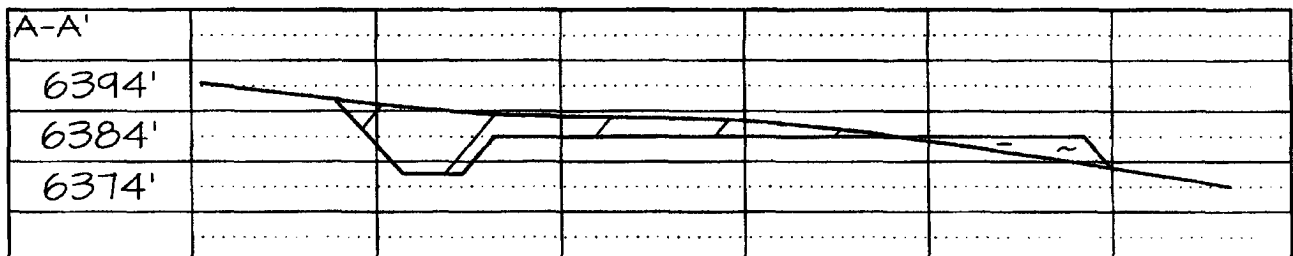
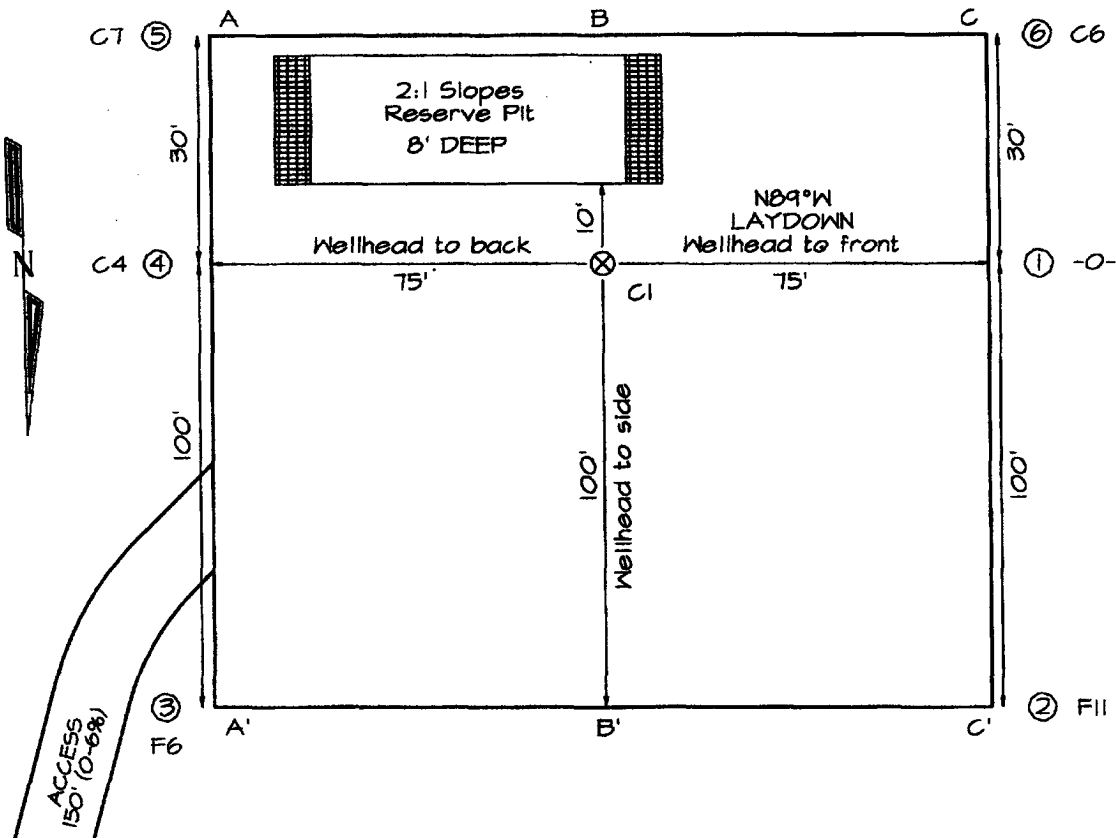


JASON C. EDWARDS
Certificate Number 15269

LATITUDE: 36°59'52"
LONGITUDE: 108°02'23"

PLAT NOTE:

FEE SURFACE OWNER
Kennon Decker



Note: Contractor should call One-Call for location of any marked or unmarked buried pipelines or cables on well pad and/or access road at least two (2) working days prior to construction