

UNITED STATES
DEPARTMENT OF THE INTERIOR
BUREAU OF LAND MANAGEMENT

SUNDRY NOTICES AND REPORTS ON WELLS

Do not use this form for proposals to drill or to re-enter an abandoned well. Use Form 3160-3 (APD) for such proposals.

SUBMIT IN TRIPLICATE - Other Instructions on reverse side

FORM APPROVED

OMB No. 1004-0135

Expires: January 31, 2004

5. Lease Serial No.

Jicarilla Contr. 97

6. If Indian, Alottee, or Tribe Name

JICARILLA APACHE

7. If Unit or CA. Agreement Designation

070 FARMINGTON NM

8. Well Name and No.

Tribal "C" No. 12E

9. API Well No.

30-039-23504

10. Field and Pool, or Exploratory Area

Basin Dakota

11. County or Parish, State

RIO ARriba COUNTY, NM

1. Type of Well

☐ Oil Well

☒ Gas Well

☐ Other

2. Name of Operator

PATINA OIL AND GAS CORPORATION

3a. Address

5802 US HIGHWAY 64, FARMINGTON, NM 87401

3b. Phone No. (include area code)

505-632-8056

4. Location of Well (Footage, Sec., T., R., M., or Survey Description)

790' fsl, & 790' fwl
Section 8 - T26N - R3W

12. CHECK APPROPRIATE BOX(S) TO INDICATE NATURE OF NOTICE, REPORT, OR OTHER DATA

TYPE OF SUBMISSION

☒ Notice of Intent

☐ Subsequent Report

☐ Final Abandonment Notice

TYPE OF ACTION

☐ Acidize

☐ Altering Casing

☐ Casing Repair

☐ Change Plans

☐ Convert to Injection

☐ Deepen

☐ Fracture Treat

☐ New Construction

☐ Plug and abandon

☐ Plug back

☐ Production (Start/Resume)

☐ Reclamation

☒ Recomplete

☐ Temporarily Abandon

☐ Water Disposal

☐ Water Shut-off

☐ Well Integrity

☐ Other

13. Describe Proposed or Completed Operation (clearly state all pertinent details including estimated starting date of any proposed work and approximate duration thereof. If the proposal is to deepen directionally or recomplete horizontally, give subsurface locations and measured and true vertical depths or pertinent markers and sands. Attach the Bond under which the work will be performed or provide the Bond No. on file with the BLM/ BIA. Required subsequent reports shall be filed within 30 days following completion of the involved operations. If the operation results in a multiple completion or recompletion in a new interval, a Form 3160-4 shall be filed once testing has been completed. Final Abandonment Notice shall be filed only after all requirements, including reclamation, have been completed, and the operator has determined that the site is ready for final inspection.)

Recomplete in the Mesaverde as per attached procedure.

Commingle the Mesaverde and Dakota formations.



04 NOV 23 AM 10:53
DID ALBUQUERQUE, N.M.

RECEIVED
BLM

HOLD C104 FOR play in MV

No commingling or down

14. I hereby certify that the foregoing is true and correct.

Name (Printed/ Typed)

JEAN M. MUSE

Title

REGULATORY/ENGINEERING TECH

Signature

Date

10/29/04

THIS SPACE FOR FEDERAL OR STATE OFFICE USE

Approved by

/s/ David R. Sitzler

Division of Multi-Resources

DEC 17 2004

Conditions of approval, if any are attached. Approval of this notice does not warrant or certify that the applicant holds legal or equitable title to those rights in the subject lease which would entitle the applicant to conduct operations thereon.

Office

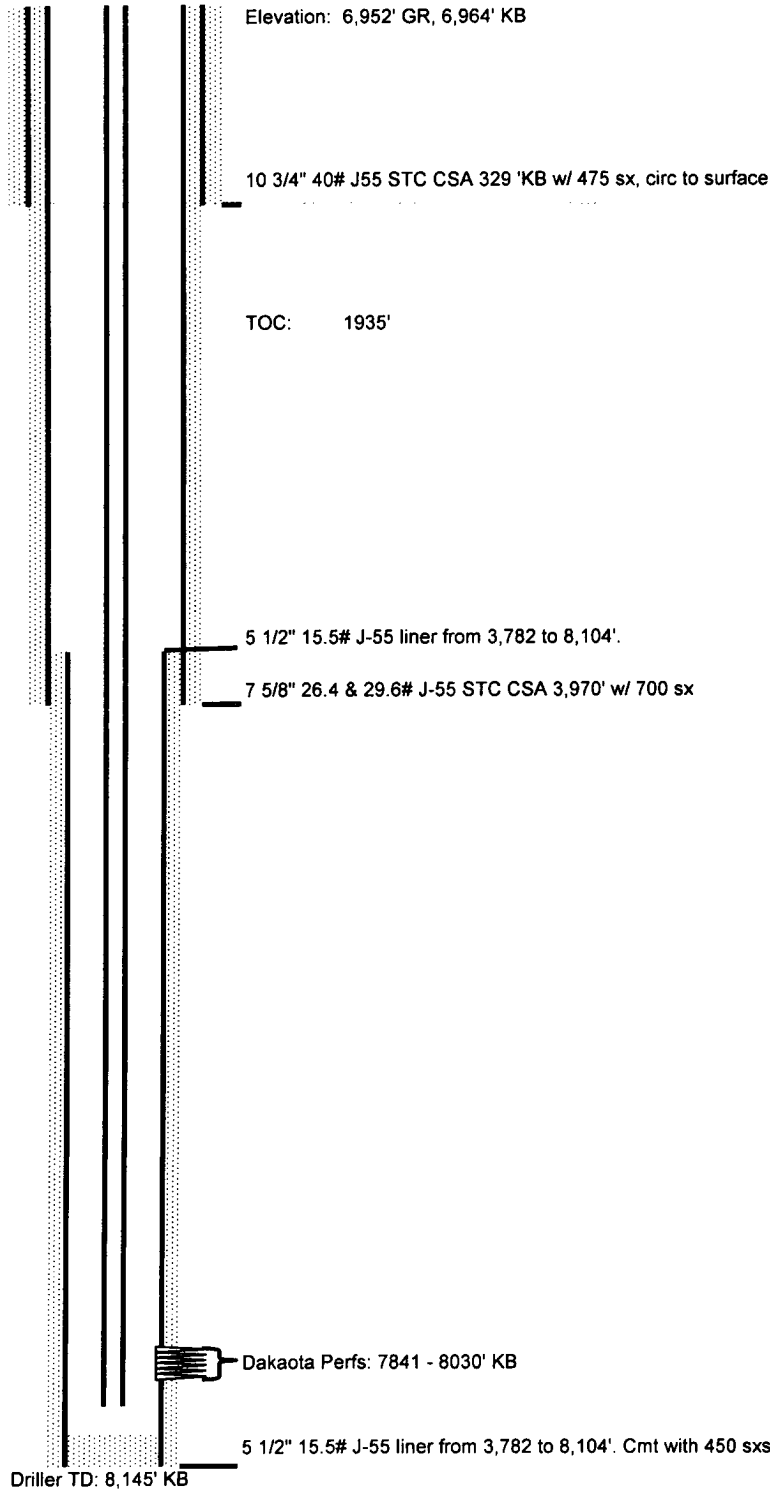
Title 18 U.S.C. Section 1001 AND Title 43 U.S.C. Section 1212, make it a crime for any person knowingly and willfully to make any department or agency of the United States any false, fictitious or fraudulent statements or representations as to any matter within its jurisdiction.

(Instructions on reverse)

PATINA

OIL & GAS CORPORATION

Jicarilla "C" #12E
AFE#: TBD



Location: 790' FSL, 790' FWL, Sec 8, T26N, R5W,
Rio Arriba County, New Mexico
Lease #: Jicarilla Contr. 97

Field: Blanco Mesa Verde / Basin Dakota

API #: 30-039-23504

Spud Date: August 3, 1984

Tribal "C" No. 12E

Location: 790' fsl, 790' fwl – Section 8 – T26N – R3W
Rio Arriba County, New Mexico

Field: Basin Dakota

API #: 30-039-23504

Spud Date: August 3, 1984

Elevations: 6952' GL, 6964' KB

Anticipated Start Date: December 1, 2004

Mesaverde Recompletion
Procedure

1. MIRU
2. Kill well. Install BOP.
3. POH with production string.
4. Set bridge plug at 6100 ft. +/- . Test bridge plug to 2000 psi.
5. Selectively perforate the Mesaverde from 5784' to 5944' KB.
6. Fracture stimulate the Mesaverde.
7. Clean up well.
8. Run in hole with production equipment.
9. Test the Mesaverde for 30 days +/- .
10. Commingle with the Dakota.

Tribal "C" No. 12E

Location: 790' fsl, 790' fwl – Section 8 – T26N – R3W
Rio Arriba County, New Mexico

Field: Basin Dakota

API #: 30-039-23504

Spud Date: August 3, 1984

Elevations: 6952' GL, 6964' KB

Mesaverde – Dakota Commingle
Procedure

1. MIRU.
2. Kill well. Install BOP
3. POH with production string.
4. Remove bridge plug at 6100 ft. +/-.
5. RIH with production string and produce both the Mesaverde and Dakota.

Allocation

Dakota formation production will be based on the established historical producing trend.
See attached production history curve.

Mesaverde formation production would be the total well production less the established historical Dakota production.

