

UNITED STATES
DEPARTMENT OF THE INTERIOR
BUREAU OF LAND MANAGEMENTFORM APPROVED
OMB NO. 1004-0135
Expires: November 30, 2000**SUNDRY NOTICES AND REPORTS ON WELLS**
Do not use this form for proposals to drill or to re-enter an abandoned well. Use form 3160-3 (APD) for such proposals.5. Lease Serial No.
SF-080597

6. If Indian, Allottee or Tribe Name

7. If Unit or CA/Agreement, Name and/or No.

SUBMIT IN TRIPLICATE - Other instructions on reverse side.

1. Type of Well

☐ Oil Well ☒ Gas Well ☐ Other8. Well Name and No.
GARTNER A 15

2. Name of Operator

BP AMERICA PRODUCTION COMPANY

Contact:

MARY CORLEY

E-Mail: CORLEYML@BP.COM

9. API Well No.

30-045-27506

3a. Address

HOUSTON, TX 77253

3b. Phone No. (include area code)

Ph: 281-366-4491

10. Field and Pool, or Exploratory
BASIN FC & BLANCO PC

4. Location of Well (Footage, Sec., T., R., M., or Survey Description)

Sec 33 T30N R8W SENE 1790FNL 840FEL

11. County or Parish, and State

SAN JUAN COUNTY, NM

12. CHECK APPROPRIATE BOX(ES) TO INDICATE NATURE OF NOTICE, REPORT, OR OTHER DATA

TYPE OF SUBMISSION

TYPE OF ACTION

☒ Notice of Intent☐ Subsequent Report☐ Final Abandonment Notice☐ Acidize☐ Alter Casing☐ Casing Repair☐ Change Plans☐ Convert to Injection☐ Deepen☐ Fracture Treat☐ New Construction☐ Plug and Abandon☐ Plug Back☐ Production (Start/Resume)☐ Reclamation☐ Recomplete☐ Temporarily Abandon☐ Water Disposal☐ Water Shut-Off☐ Well Integrity☒ Other
Subsurface Commingling

13. Describe Proposed or Completed Operation (clearly state all pertinent details, including estimated starting date of any proposed work and approximate duration thereof. If the proposal is to deepen directionally or recompleate horizontally, give subsurface locations and measured and true vertical depths of all pertinent markers and zones. Attach the Bond under which the work will be performed or provide the Bond No. on file with BLM/BIA. Required subsequent reports shall be filed within 30 days following completion of the involved operations. If the operation results in a multiple completion or recompleation in a new interval, a Form 3160-4 shall be filed once testing has been completed. Final Abandonment Notices shall be filed only after all requirements, including reclamation, have been completed, and the operator has determined that the site is ready for final inspection.)

BP America Production Company request permission to recompleate the subject well into the Blanco Pictured Cliffs and commingle production Downhole with the existing Basin Fruitland Coal as per the attached procedure.

The Basin Fruitland Coal (71629) and Blanco Pictured Cliffs (72359) Pools are Pre-Approved Pools for Downhole Commingling per NMOCD order R-11363. The working and overriding royalty interest owners in the proposed commingled pools are identical, therefore no further notification of this application is required.

Production is proposed to be allocated based on the subtraction method using the projected future decline for production from the Fruitland Coal. That production shall serve as a base for production subtracted from the total production for the commingled well. The balance of the

14. I hereby certify that the foregoing is true and correct.

Electronic Submission #51037 verified by the BLM Well Information System
For BP AMERICA PRODUCTION COMPANY, sent to the Farmington
Committed to AFMSS for processing by MATTHEW HALBERT on 12/08/2004 ()

Name (Printed/Typed) MARY CORLEY

Title AUTHORIZED REPRESENTATIVE

Signature (Electronic Submission)

Date 11/17/2004

Adhere to previously issued stipulations.

THIS SPACE FOR FEDERAL OR STATE OFFICE USE

Approved By

Title

Acting
Team Lead12-10-04
Date

Conditions of approval, if any, are attached. Approval of this notice does not warrant or certify that the applicant holds legal or equitable title to those rights in the subject lease which would entitle the applicant to conduct operations thereon.

Office

FDD

Title 18 U.S.C. Section 1001 and Title 43 U.S.C. Section 1212, make it a crime for any person knowingly and willfully to make to any department or agency of the United States any false, fictitious or fraudulent statements or representations as to any matter within its jurisdiction.

**** OPERATOR-SUBMITTED ** OPERATOR-SUBMITTED ** OPERATOR-SUBMITTED ****

Additional data for EC transaction #51037 that would not fit on the form

32. Additional remarks, continued

production will be attributed to the Pictured Cliffs. Attached is the future production decline estimates for the Fruitland Coal.

Commingling Production Downhole in the subject well from the proposed Pools with not reduce the value of the total remaining production.

Gartner A 15
API #: 30-045-27506
Recomplete into Pictured Cliffs, and Downhole Commingle with Fruitland Coal
November 17, 2004

Procedure:

Procedure:

1. Check anchors. Check ID wellhead, if earth pit is required have One Call made 48 hours prior to digging.
2. Check and record tubing, casing, and bradenhead pressures. Ensure production casing has double casing valves installed. Double valve all casing strings.
3. RU slickline unit or wireline unit. RIH and set **two** barriers (CIBP, tbg collar stop w/plug, or plug set in nipple) for isolation.
4. MIRU workover rig.
5. Blow down well. Kill with 2% KCL water ONLY if necessary. Check all casing strings to ensure no pressure exist on any annulus.
6. Nipple down Wellhead. NU BOPs and diversion spool with 3" outlets and 3" pipe to the blow tank. Pressure test BOPs to 200 psi above BHP. Monitor flowing casing pressure with gauge (with casing flowing to blow tank) throughout workover.
7. Pull tubing hanger and shut pipe rams and install stripping rubber.
8. TOH with 2-3/8" production tubing currently set at 2850' using approved "Under Balance Well Control Tripping Procedure".

Contingency: *If the tubing is in poor condition, replace entire tubing string.*

9. TIH with bit and scraper for 5-1/2" casing to 3230' with approved barriers. Check the distance between the top of the blind ram and the length of the bottom hole assembly that is being run. If the BHA is too long then the well has to be top killed and monitored prior to opening blind rams.
10. RIH with 3-1/8" casing guns (Lubricator required). Perforate Pictured Cliffs formation (correlate to GR log). RDWL and lubricator.

Pictured Cliffs perforations, 4 spf (15 shots/ 60 holes):

11. RIH w/ 2-7/8" frac string and 5-1/2" packer. Set packer at +/-3050'.
12. Spearhead 500 gal 15% HCL, establish injection rate, and proceed with fracture stimulation according to Schlumberger schedule. Maintain surface pressures \leq 5500 psi during frac job. Flush frac with foam. Fill out GWSI scorecard.

13. Flowback frac immediately. Flow well through the 3" line and into the choke manifold until well dies or stabilizes.
14. Release packer and TOH w/ frac string and packer. LD frac string.
15. Rig up air package/unit, pressure test all lines (Testing procedure to be supplied from air company), TIH with tubing and bit. Cleanout fill to PBTD at 3,230'. Blow well dry at PBTD. Reference Under Balanced Well Control Tripping Procedure.
16. Rabbit tubing and RIH with 2-3/8" production tubing (with muleshoe, F-nipple with plug, 4 ft pup, X-nipple with plug).
17. Land 2-3/8" production tubing with hanger, lock down hanger at +/-2,900'.
18. Pressure test tubing to 500 psi with air unit, make sure tubing spool valves are open. Check all casing string for pressure.
19. ND BOP's. NU WH. Test well for air. Return well to production and downhole co-mingle Chacra, and Mesaverde.
20. RU WL unit. Run gauge ring for 2-3/8" tubing. Pull plugs and set tubing stop for plunger. RD slickline unit.

Gartner A 15

Sec 33, T30N, R8W

API: 30-045-27506

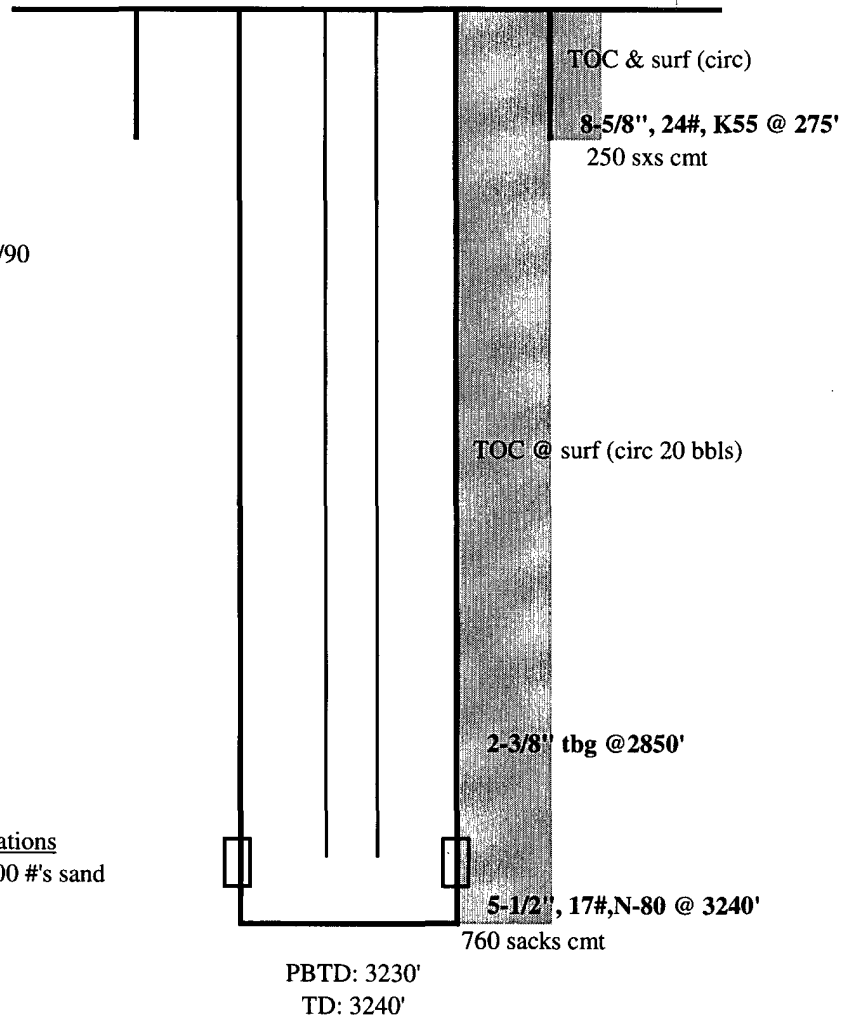
6319' GL

History:

Completed in FC in 2/90

Fruitland Coal Perforations

2888' - 3012' w/ 26,200 #'s sand



updated: 9/27/04 CFR

Gartner A 15 Future Production Decline Estimate **Fruitland Coal Daily Rates**

11/17/2004

$$\ln(Q_f/Q_i) = -dt$$

$$Q_f = 117$$

$$Q_i = 122$$

$$\text{rate} = 117$$

$$\text{time} = 8$$

$$dt = -0.04184711$$

$$\text{decline} = -0.612013983$$

Month	Gas Volume
Jan-2003	116
Feb-2003	119
Mar-2003	119
Apr-2003	112
May-2003	115
Jun-2003	106
Jul-2003	122
Aug-2003	126
Sep-2003	121
Oct-2003	119
Nov-2003	119
Dec-2003	122
Jan-2004	102
Feb-2004	100
Mar-2004	108
Apr-2004	110
May-2004	106
Jun-2004	115
Jul-2004	117
Aug-2004	116
Sep-2004	116
Oct-2004	116
Nov-2004	115
Dec-2004	115
Jan-2005	115
Feb-2005	114
Mar-2005	114
Apr-2005	114
May-2005	113
Jun-2005	113
Jul-2005	113
Aug-2005	112
Sep-2005	112
Oct-2005	112
Nov-2005	112
Dec-2005	111

Month	Gas Volume
Jan-2006	111
Feb-2006	110
Mar-2006	109
Apr-2006	109
May-2006	108
Jun-2006	108
Jul-2006	107
Aug-2006	106
Sep-2006	106
Oct-2006	105
Nov-2006	105
Dec-2006	104
Jan-2007	103
Feb-2007	103
Mar-2007	102
Apr-2007	101
May-2007	101
Jun-2007	100
Jul-2007	100
Aug-2007	99
Sep-2007	98
Oct-2007	98
Nov-2007	97
Dec-2007	97
Jan-2008	96
Feb-2008	95
Mar-2008	95
Apr-2008	94
May-2008	93
Jun-2008	93
Jul-2008	92
Aug-2008	92
Sep-2008	92
Oct-2008	91
Nov-2008	90
Dec-2008	90
Jan-2009	89

Month	Gas Volume
Feb-2009	89
Mar-2009	88
Apr-2009	87
May-2009	87
Jun-2009	86
Jul-2009	86
Aug-2009	85
Sep-2009	84
Oct-2009	84
Nov-2009	83
Dec-2009	82
Jan-2010	82
Feb-2010	81
Mar-2010	81
Apr-2010	80
May-2010	79
Jun-2010	79
Jul-2010	78
Aug-2010	78
Sep-2010	77
Oct-2010	76
Nov-2010	76
Dec-2010	75
Jan-2011	75
Feb-2011	74
Mar-2011	73
Apr-2011	73
May-2011	72
Jun-2011	71
Jul-2011	71
Aug-2011	70
Sep-2011	70
Oct-2011	69
Nov-2011	68
Dec-2011	68
Jan-2012	67

Gartner A 15 Future Production Decline Estimate **Fruitland Coal Daily Rates**

11/17/2004

Month	Gas Volume
Feb-2012	67
Mar-2012	66
Apr-2012	65
May-2012	65
Jun-2012	64
Jul-2012	64
Aug-2012	63
Sep-2012	62
Oct-2012	62
Nov-2012	61
Dec-2012	60
Jan-2013	60
Feb-2013	59
Mar-2013	59
Apr-2013	58
May-2013	57
Jun-2013	57
Jul-2013	56
Aug-2013	56
Sep-2013	55
Oct-2013	54
Nov-2013	54
Dec-2013	53
Jan-2014	52
Feb-2014	52
Mar-2014	51
Apr-2014	51
May-2014	50
Jun-2014	49
Jul-2014	49
Aug-2014	48
Sep-2014	48
Oct-2014	47
Nov-2014	46
Dec-2014	46
Jan-2015	45

Month	Gas Volume
Feb-2015	45
Mar-2015	44
Apr-2015	43
May-2015	43
Jun-2015	42
Jul-2015	41
Aug-2015	41
Sep-2015	40
Oct-2015	40
Nov-2015	39
Dec-2015	38
Jan-2016	38
Feb-2016	37
Mar-2016	37
Apr-2016	36
May-2016	35
Jun-2016	35
Jul-2016	34
Aug-2016	34
Sep-2016	33
Oct-2016	32
Nov-2016	32
Dec-2016	31
Jan-2017	30
Feb-2017	30
Mar-2017	29
Apr-2017	29
May-2017	28
Jun-2017	27
Jul-2017	27
Aug-2017	26
Sep-2017	26
Oct-2017	25
Nov-2017	24
Dec-2017	24
Jan-2018	23

District I

1625 N. French Dr., Hobbs, NM 88240

District II

811 South First, Artesia, NM 88210

District III

1000 Rio Brazos Rd., Aztec, NM 87410

District IV

2040 South Pacheco, Santa Fe, NM 87505

State of New Mexico
Energy, Minerals & Natural Resources Department**OIL CONSERVATION DIVISION**2040 South Pacheco
Santa Fe, NM 87505Form C-102
Revised August 15, 2000

Submit to Appropriate District Office

State Lease - 4 Copies

Fee Lease - 3 Copies

☐ AMENDED REPORT**WELL LOCATION AND ACREAGE DEDICATION PLAT**

¹ API Number 30-045-27506	² Pool Code 72359	³ Pool Name Blanco Pictured Cliffs
⁴ Property Code 000589	⁵ Property Name Gartner A	⁶ Well Number 15
⁷ OGRID No. 000778	⁸ Operator Name BP America Production Company	⁹ Elevation 6319

¹⁰ Surface Location

UL or lot no. Unit H	Section 33	Township 30N	Range 08W	Lot Idn	Feet from 1790	North/South North	Feet from 840	East/West East	County San Juan
--------------------------------	----------------------	------------------------	---------------------	---------	--------------------------	-----------------------------	-------------------------	--------------------------	---------------------------

¹¹ Bottom Hole Location If Different From Surface

UL or lot no.	Section	Township	Range	Lot Idn	Feet from	North/South	Feet	East/West	County
¹² Dedicated Acres 160	¹³ Joint or Infill	¹⁴ Consolidation Code	¹⁵ Order No.						

NO ALLOWABLE WILL BE ASSIGNED TO THIS COMPLETION UNTIL ALL INTERESTS HAVE BEEN CONSOLIDATED OR A NON-STANDARD UNIT HAS BEEN APPROVED BY THE DIVISION

			1790'		¹⁷ OPERATOR CERTIFICATION I hereby certify that the information contained herein is true and complete to the best of my knowledge and belief. <i>Mary Corley</i> Signature Mary Corley Printed Name Sr. Regulatory Analyst Title 11/08/2004 Date
					¹⁸ SURVEYOR CERTIFICATION I hereby certify that the well location shown on this plat was plotted from field notes of actual surveys made by me or under my supervision, and that the same is true and correct to the best of my belief. 8/11/1989 Date of Survey Signature and Seal of Professional Surveyor: Gary D Vann 7016 Certificate Number