

UNITED STATES
DEPARTMENT OF THE INTERIOR
BUREAU OF LAND MANAGEMENT

FORM APPROVED
OMB No. 1004-0137
Expires: November 30, 2000

WELL COMPLETION OR RECOMPLETION REPORT AND LOG

5. Lease Serial No.
NMSF079353

1a. Type of Well ☐ Oil Well ☐ Gas Well ☐ Dry ☒ Other: CBM
b. Type of Completion ☒ New Well ☐ Work Over ☐ Deepen ☐ Plug Back ☐ Diff. Resvr.
Other _____

6. If Indian, Allottee or Tribe Name

2. Name of Operator
CONOCOPHILLIPS COMPANY

Contact: JUANITA FARRELL
E-Mail: juanita.r.farrell@conocophillips.com

7. Unit or CA Agreement Name and No.
NMNM78424B

3. Address P O BOX 2197 WL 6106
HOUSTON, TX 77252

3a. Phone No. (include area code)
Ph: 505.599.3419

8. Lease Name and Well No.
SAN JUAN 32-8 UNIT 247A

4. Location of Well (Report location clearly and in accordance with Federal requirements)
Sec 19 T32N R8W Mer NMP
At surface NENW 665FNL 1650FWL

9. API Well No.
30-045-32467-01-S1

10. Field and Pool, or Exploratory
BASIN FRUITLAND COAL

11. Sec., T., R., M., or Block and Survey
or Area Sec 19 T32N R8W Mer NMP

12. County or Parish
SAN JUAN

13. State
NM

14. Date Spudded
10/13/2003

15. Date T.D. Reached
11/09/2004

16. Date Completed
12/01/2004

17. Elevations (DF, KB, RT, GL)*
6686 GL

18. Total Depth: MD 3675
TVD 3675

19. Plug Back T.D.: MD 3673
TVD 3673

20. Depth Bridge Plug Set: MD
TVD

21. Type Electric & Other Mechanical Logs Run (Submit copy of each)
MUDLOG

22. Was well cored? ☒ No ☐ Yes (Submit analysis)
Was DST run? ☒ No ☐ Yes (Submit analysis)
Directional Survey? ☐ No ☒ Yes (Submit analysis)

23. Casing and Liner Record (Report all strings set in well)

Hole Size	Size/Grade	Wt. (#/ft.)	Top (MD)	Bottom (MD)	Stage Cementer Depth	No. of Sk. & Type of Cement	Slurry Vol. (BBL)	Cement Top*	Amount Pulled
8.750	7.000 J-55	20.0		3304		535		0	43
12.250	9.625 H-40	32.3	0	236		150		0	9
6.250	5.500 J-55	15.5	3137	3675		0			

24. Tubing Record

Size	Depth Set (MD)	Packer Depth (MD)	Size	Depth Set (MD)	Packer Depth (MD)	Size	Depth Set (MD)	Packer Depth (MD)
2.375	3652							

25. Producing Intervals

26. Perforation Record

Formation	Top	Bottom	Perforated Interval	Size	No. Holes	Perf. Status
A) FRUITLAND COAL	3332	3585	3332 TO 3585	0.750	312	OPEN
B)						
C)						
D)						

27. Acid, Fracture, Treatment, Cement Squeeze, Etc.

Depth Interval	Amount and Type of Material

28. Production - Interval A

Date First Produced	Test Date	Hours Tested	Test Production	Oil BBL	Gas MCF	Water BBL	Oil Gravity Corr. API	Gas Gravity	Production Method
12/01/2004	11/25/2004	1	→	0.0	3200.0	2.0			GAS PUMPING UNIT
Choke Size	Tbg. Press. Flwg. SI	Csg. Press. SI	24 Hr. Rate	Oil BBL	Gas MCF	Water BBL	Gas:Oil Ratio	Well Status	
2" PITOT	SI	23.8	→	0	76800	48		GSI	

28a. Production - Interval B

Date First Produced	Test Date	Hours Tested	Test Production	Oil BBL	Gas MCF	Water BBL	Oil Gravity Corr. API	Gas Gravity	Production Method
			→						
Choke Size	Tbg. Press. Flwg. SI	Csg. Press. SI	24 Hr. Rate	Oil BBL	Gas MCF	Water BBL	Gas:Oil Ratio	Well Status	
	SI		→						

ACCEPTED FOR RECORD

DEC 20 2004

FARMINGTON FIELD OFFICE

(See Instructions and spaces for additional data on reverse side)

ELECTRONIC SUBMISSION #51830 VERIFIED BY THE BLM WELL INFORMATION SYSTEM

** BLM REVISED ** BLM REVISED ** BLM REVISED ** BLM REVISED ** BLM REVISED **

NMCCD

28b. Production - Interval C

Date First Produced	Test Date	Hours Tested	Test Production	Oil BBL	Gas MCF	Water BBL	Oil Gravity Corr. API	Gas Gravity	Production Method
			→						
Choke Size	Tbg. Press. Flwg. SI	Csg. Press.	24 Hr. Rate	Oil BBL	Gas MCF	Water BBL	Gas:Oil Ratio	Well Status	
			→						

28c. Production - Interval D

Date First Produced	Test Date	Hours Tested	Test Production	Oil BBL	Gas MCF	Water BBL	Oil Gravity Corr. API	Gas Gravity	Production Method
			→						
Choke Size	Tbg. Press. Flwg. SI	Csg. Press.	24 Hr. Rate	Oil BBL	Gas MCF	Water BBL	Gas:Oil Ratio	Well Status	
			→						

29. Disposition of Gas(Sold, used for fuel, vented, etc.)
SOLD

30. Summary of Porous Zones (Include Aquifers):

Show all important zones of porosity and contents thereof: Cored intervals and all drill-stem tests, including depth interval tested, cushion used, time tool open, flowing and shut-in pressures and recoveries.

31. Formation (Log) Markers

Formation	Top	Bottom	Descriptions, Contents, etc.	Name	Top Meas. Depth
SAN JOSE	0	644		NACIMIENTO	681
NACIMIENTO	644	2123		OJO ALAMO	2181
OJO ALAMO	2123	2215		KIRTLAND	2281
				FRUITLAND	3139

32. Additional remarks (include plugging procedure):

This well is a single well producing from the Basin Fruitland Coal.

Our original plan was to drill and complete this well as a vertical well but due to complications it was necessary to sidetrack.

Surface Location: 665' FNL & 1650' FWL SEC. 19 T32N R8W

Bottom Hole Location: 688' FNL & 1651' FWL SEC. 19 T32N R8W

33. Circle enclosed attachments:

- | | | | |
|---|--------------------|---------------|-----------------------|
| 1. Electrical/Mechanical Logs (1 full set req'd.) | 2. Geologic Report | 3. DST Report | 4. Directional Survey |
| 5. Sundry Notice for plugging and cement verification | 6. Core Analysis | 7 Other: | |

34. I hereby certify that the foregoing and attached information is complete and correct as determined from all available records (see attached instructions):

Electronic Submission #51830 Verified by the BLM Well Information System.

For CONOCOPHILLIPS COMPANY, sent to the Farmington

Committed to AFMSS for processing by ADRIENNE BRUMLEY on 12/20/2004 (05AXB0521SE)

Name (please print) JUANITA FARRELL

Title AUTHORIZED REPRESENTATIVE

Signature (Electronic Submission)

Date 12/13/2004

Title 18 U.S.C. Section 1001 and Title 43 U.S.C. Section 1212, make it a crime for any person knowingly and willfully to make to any department or agency of the United States any false, fictitious or fraudulent statements or representations as to any matter within its jurisdiction.

**** REVISED ** REVISED ** REVISED ** REVISED ** REVISED ** REVISED ** REVISED ** REVISED ****

END OF WELL SCHEMATIC

Well Name: San Juan 32-8 # 247A
 API #: 30-045-32467
 Surface Loc: 665' FNL & 1650' FWL
 Sec. 19 - T32N - R8W
 San Juan County, NM
 Elevation: 6686' GL (above MSL)
 Btm Hole Loc: 688' FNL & 1651' FWL
 Drl Rig RKB: 13' above Ground Level
 Datum: Drl Rig RKB = 13' above GL

Spud: 13-Oct-2004

Release Drl Rig: 16-Oct-2004
 Move In Cav Rig: 21-Oct-2004
 Reached Original TD: 23-Oct-2004
 Commenced Sidetrack: 7-Nov-2004
 Reached Sidetrack TD: 9-Nov-2004
 Release Cav Rig: 30-Nov-2004

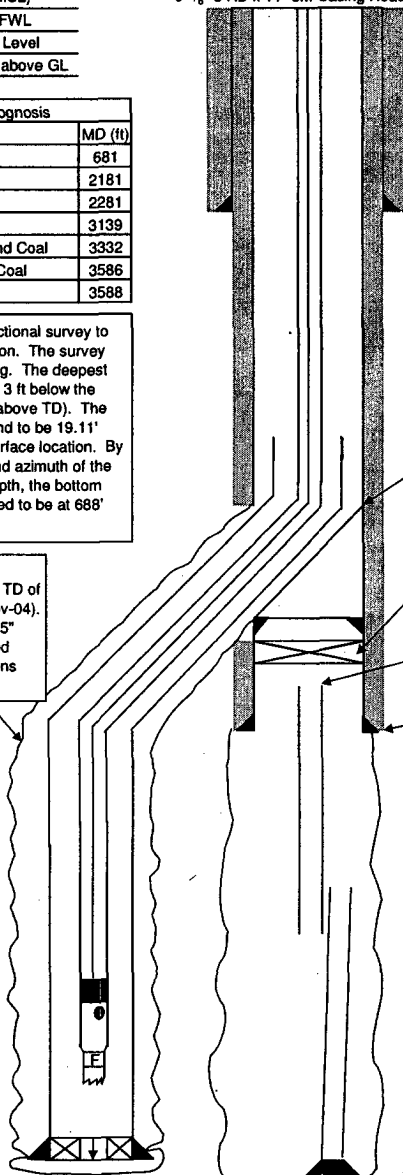
Note: This well is equipped with rods & pump
 7-1/16" 3M x 2-3/8" EUE 8rd Bonnet
 11" 3M x 7-1/16" 3M Tubing Head
 9-5/8" 8 RD x 11" 3M Casing Head

Geological Prognosis	
Formation	MD (ft)
Nacimiento	681
Ojo Alamo	2181
Kirtland Shale	2281
Fruitland Formation	3139
Top of uppermost Fruitland Coal	3332
Base of lowest Fruitland Coal	3586
Top of Picture Cliffs	3588

27-Nov-2004: Ran a gyro directional survey to prove the sidetrack hole location. The survey was run inside the 2-3/8" tubing. The deepest survey point was 3588' MD (ie 3 ft below the deepest perforation and 87 ft above TD). The hole location at 3588' was found to be 19.11' South and 4.55' East of the surface location. By extrapolating the inclination and azimuth of the survey at 3588' MD to total depth, the bottom hole location (BHL) is calculated to be at 688' FNL and 1651' FWL.

Sidetrack Hole Interval:
 Drilled 6-1/4" sidetrack hole to TD of 3675' MD, 3674.55' TVD (9-Nov-04). Underreamed 6-1/4" hole to 9.5" from 3215' to 3675'. Performed cavitation & clean out operations Nov 10 - 23, 2004.

Perforations		
24-Nov-04		
4 JSPF, 0.75" DIA		
120 deg phasing		
From	To	
MD	MD	Ft
3332	3336	4
3362	3368	6
3374	3378	4
3381	3386	5
3390	3406	16
3527	3532	5
3534	3541	7
3544	3560	16
3570	3585	15
Total Ft		78
Total Shots		312



13-Oct-2004: 9-5/8", 32.3#, H-40, ST&C surface casing set at 226' in 12-1/4" hole and cemented to surface.

Original Producing Interval Hole:
 Drilled 6-1/4" hole to TD of 3675' (23-Oct-04) and underreamed 6-1/4" hole to 9.5". Commenced cavitation operations on 25-Oct-04. Got stuck at 00:00 hrs on 27-Oct-2004. Came loose at 01:30 hrs on 27-Oct-2004 and blew 5 jts drillpipe out of the hole. Shut rams on 5th jt of drillpipe. Power swivel was turned sideways and 5 jts of drillpipe were bent in a circle on the rig floor. No injuries occurred. From Oct 27 to Nov 5, 2004, assessed damage, cleared floor inspected rig, repaired rig, and conducted fishing operations. Unable to achieve full recovery of the fish.

6-Nov-04: Set whipstock (3 deg face) - set blind. Top of whipstock at 3192'.
 7-Nov-04: Cut window in 7" casing and started sidetrack. Bottom of window at 3200'.

6-Nov-2004:
 Set Cast Iron Bridge Plug (CIBP) at 3210' WLM
 Tag CIBP w/ Whipstock at 3205' DPM

Top of Fish at 3201',
 3213' Wire Line Measurement

16-Oct-2004: 7", 20#, J-55, ST&C intermediate casing set at 3304' in 8-3/4" hole and cemented to surface.

Fish in Abandoned Hole	
Item	Length
Drillpipe (1 jt)	31
F-Nipple	1
Drillpipe (1 jt)	31
Drillcollars (14 ea)	432
Bit sub	2
Bit	1
Total Length	498

Note: The length of the fish left in the hole is 24' longer than the distance from the top of fish to TD. Therefore it appears that the fish is either corkscrewed or broken into two or more overlapping fish.

Sidetrack Bottom Hole Location: 688' FNL & 1651' FWL
 Sidetrack TD: 3675' MD, 3674.55' TVD

TD 3,675 ft

Schematic prepared by:
 Steven O. Moore, Drilling Engineer
 09-Dec-2004

COMMENTS:

Surface Csg	13-Oct-2004: Ran 5 jts 9-5/8", 32.3#, H-40, ST&C. Saw tooth guide shoe set at 226'. (TD of 12-1/4" hole at 236') No float equipment was run. Ran a guide shoe and an aluminum baffle plate 1 jt above the guide shoe @ 183'. Cemented with 150 sx Class G cement + 2% CaCl ₂ + 0.25 lb/sx cellophane flakes, 1.16 cuft/sx yield, 174 cuft slurry at 15.8 ppg. Displaced top wiper plug with 14.5 bbls fresh water. Circulated 9 bbls (50.5 cuft) cement to surface. Shut in casing head and WOC. WOC 3.5 hrs before backing out landing jt, WOC 5.5 hrs before starting NU BOP. WOC 15.5 hrs before pressure testing the 9-5/8" surface casing. CENTRALIZERS @ 216', 141', 99', 57'. Total: 4
Intermediate Csg	16-Oct-2004: Ran 77 jts 7", 20#, J-55, ST&C. Float shoe set at 3304'. (TD of 8-3/4" hole at 3310') Cemented with Lead Slurry 435 sx Class G cement + 3% Extender + 0.25 #/sx cellophane + 0.2% antifoam, 2.61 cuft / sx yield 1135.4 cuft slurry at 11.7 ppg and Tail Slurry 100 sx 50/50 POZ:Class G cement + 2% bentonite + 5 lb/sx gilsonite + 2% CaCl ₂ + 0.25 lb/sx cellophane flakes + 0.2% antifoam, 1.27 cuft /sx yield, 127 cuft slurry at 13.5 ppg. Displaced with 20 bbls fresh water + 112 bbls 8.4 ppg drilling mud. Circulated 43 bbls (241.4 cuft) cement to surface. CENTRALIZERS @ 3294', 3215', 3128', 3043', 2957', 2871', 212', 83', 39'. TURBOLIZERS @ 2319', 2276', 2236', 2193'. Total: 9
Liner	23-Nov-04: Ran 6-1/4" bit w/ bit sub w/ float + 12 jts 5.5" 15.5# J-55 LT&C pipe + TIW H-Latch Drop Off Tool (no liner hanger). Set liner on bottom at 3675'. Top of float in bit sub is at 3673'. Top of liner (top of drop off tool) is at 3137'. The liner is NOT cemented. Total: 4
Tubing	27-Nov-04: Ran 2-1/16" saw tooth collar, 2-1/16" OD x 1.50" ID Seating Nipple, 2-1/16" x 2-3/8" crossover, 2-3/8" OD mud anchor joint with 3/8" hole drilled just below the upset, 2-3/8" OD (1.78" ID) F-Nipple, 115 jts 2-3/8" 4.7# J-55 EUE 8rd tubing with 1 ea 10' pup jt run 1 jt below the tubing hanger. End of Tubing at 3652', 2-1/16" OD x 1.5" ID Seating Nipple at 3651'. 2-3/8" OD x 1.78" ID F-Nipple at 3618'.
Pump & Rods	29-Nov-04: Ran 12" long strainer attached below insert pump with 3 ea 25" x 1-1/4" OD sinker bars on top of pump 141 ea 3/4" OD rods, 1 ea 10' x 3/4" OD pony rod & 1 ea 1-1/4" OD x 22' polished rod Set pump in 2-3/8" OD (1.78" ID) F-Nipple at 3618' MD RKB

Operations Summary Report

Legal Well Name: SAN JUAN 32-8 UNIT 247A

Common Well Name: SAN JUAN 32-8 UNIT 247A

Event Name: COMPLETION

Contractor Name: KEY ENERGY SVCS

Rig Name: KEY 18

Spud Date: 10/13/2004

Start: 10/21/2004 End: 11/30/2004

Rig Release: 11/30/2004 Group:

Rig Number: 18

Date	From - To	Hours	Code	Sub Code	Phase	Description of Operations
10/22/2004	07:00 - 07:30	0.50	MOVE	SFTY	DEMOB	SAFETY MEETING & JSA REVIEW'S @ START OF ALL OPERATION'S
	07:30 - 09:30	2.00	MOVE	DMOB	DEMOB	LOADING OUT EQUIPMENT ON FLOAT'S
	09:30 - 13:00	3.50	MOVE	PSIT	MIRU	MOVING RIG & EQUIPMENT TO LOCATION
	13:00 - 18:30	5.50	MOVE	RURD	MIRU	MIRU KEY RIG # 18 & EQUIPMENT
	18:30 - 19:00	0.50	MOVE	OTHR	MIRU	SECURED LOCATION = S.D.O.N.
10/23/2004	07:00 - 07:30	0.50	MOVE	SFTY	MIRU	SAFETY MEETING & JSA REVIEW'S @ START OF ALL OPERATION'S
	07:30 - 12:00	4.50	MOVE	RURD	MIRU	RU RIG & EQUIPMENT, NU BOP'S, HCR VALVE'S, BLOOIE LINE'S & ALL GROUND LINE'S = INSPECTION OF DC'S & SUB'S BY TUBOSCOPE
	12:00 - 13:00	1.00	EVALFM	PRTS	MIRU	TEST 7" CSG & BLIND RAM'S 250# 3 MIN'S & 1800# 30 MIN'S FOR STATE INTEGRITY TEST = GOOD TEST
	13:00 - 13:45	0.75	EVALFM	PULD	MIRU	PU PIPE OUT OF PIPE BASKET & PUT ON PIPE RACK = TALLY PIPE
	13:45 - 16:30	2.75	EVALFM	PULD	MIRU	GIH PU 6 1/4" STX-20 NO # 5023101 RE-RUN HUGHES BIT, BIT SUB, 14-3 1/2" DC'S, 1-2 7/8" DP, 1-2 7/8" FN W / 1.81 PROFILE & 2 7/8" DP = SHUT DOWN TO TEST PIPE RAM'S & CHOKE MANIFOLD
10/24/2004	16:30 - 18:30	2.00	EVALFM	PRTS	MIRU	TEST PIPE RAM'S & CHOKE MANIFOLD TO 250# 3 MIN'S & 1800# 10 MIN'S = GOOD TEST
	18:30 - 19:00	0.50	EVALFM	OTHR	MIRU	SECURED WELL & LOCATION = S.D.O.N.
	07:00 - 07:30	0.50	EVALFM	SFTY	COMPZN	SAFETY MEETING & JSA REVIEW'S @ START OF ALL OPERATION'S
	07:30 - 08:00	0.50	EVALFM	OTHR	COMPZN	START & WARM ENGINE'S
	08:00 - 08:30	0.50	EVALFM	PULD	COMPZN	GIH PU DP TAG CMT @ 3150'
	08:30 - 09:30	1.00	EVALFM	RURD	COMPZN	PU & RU POWER SWIVEL
	09:30 - 10:00	0.50	EVALFM	CIRC	COMPZN	BREAK CIRC W / 1500 SCFM AIR, 10 BPH MIST, 1 GAL OF 450 FOAMER, 1/4 GAL OF CORROSION INHIBITOR PER 10 BBL'S OF FLUID PUMPED, 75 RPM'S, 400# ON DP @ RIG FLOOR, 6 TO 8 POINT'S ON BIT
	10:00 - 12:00	2.00	EVALFM	OTHR	COMPZN	DRILLING OUT CMT, 7" FLOAT COLLAR & SHOE TO INTERMEDIATE TD @ 3310' W / AIR ASSIST
	12:00 - 21:00	9.00	EVALFM	OTHR	COMPZN	DRILLING AHEAD W / 6 1/4" BIT F/3310'-T/3675' TD W / 1000 SCFM AIR, 8 TO 10 BPH MIST, 1 GAL OF 450 FOAMER, 1/4 GAL OF CORROSION INHIBITOR PER 10 BBL'S OF FLUID PUMPED, 350# ON CHART @ COMPRESSOR'S & 250# ON GAGE @ RIG FLOOR, 6 TO 8 POINT'S ON BIT, 75 RPM'S = RETURN'S TO SURFACE, MED COAL, SHALE & SANDSTONE
	21:00 - 22:00	1.00	EVALFM	CIRC	COMPZN	CIRC & CORRELATE W / MUD LOGGER'S, COAL INTERVAL'S AS FOLLOW'S 3332'-36' = 4 FT = 151 GAS UNIT'S 3362'-68' = 6 FT = 199 GAS UNIT'S 3374'-78' = 4 FT = 163 GAS UNIT'S 3382'-86' = 4 FT = 183 GAS UNIT'S 3390'-3406' = 16 FT = 193 GAS UNIT'S 3528'-30' = 2 FT = 175 GAS UNIT'S 3534'-42' = 8 FT = 175 GAS UNIT'S 3544'-60' = 16 FT = 185 GAS UNIT'S 3570'-80' = 10 FT = 214 GAS UNIT'S 3582'-86' = 4 FT = 210 GAS UNIT'S TOTAL NET COAL = 74 FT
	22:00 - 06:00	8.00	EVALFM	OTHR	COMPZN	R&R C/O T/3675' TD W / 1100 SCFM AIR, 8 BPH MIST, 1 GAL OF 450

Operations Summary Report

Legal Well Name: SAN JUAN 32-8 UNIT 247A
 Common Well Name: SAN JUAN 32-8 UNIT 247A
 Event Name: COMPLETION
 Contractor Name: KEY ENERGY SVCS
 Rig Name: KEY 18

Spud Date: 10/13/2004
 Start: 10/21/2004 End: 11/30/2004
 Rig Release: 11/30/2004 Group:
 Rig Number: 18

Date	From - To	Hours	Code	Sub Code	Phase	Description of Operations
10/24/2004	22:00 - 06:00	8.00	EVALFM	OTHR	COMPZN	FOAMER, 1/4 GAL OF CORROSION INHIBITOR PER 10 BBL'S OF FLUID PUMPED, 350# ON CHART @ COMPRESSOR'S & 250# ON GAGE @ RIG FLOOR, 75 TO 65 RPM'S, 1 TO 3 POINT'S ON BIT = RETURN'S TO SURFACE, MED TO LIGHT COAL & FINE'S W / 1 TO 2 BPH WATER GAIN = 4 DOWN TO 1 BUCKET'S PER HOUR OFF SAMPLE CATCHER = 95% COAL
10/25/2004	06:00 - 08:00	2.00	EVALFM	OTHR	COMPZN	SAFETY MEETING & JSA REVIEWS @ START OF ALL OPERATIONS = R&R C/O T/3675' W / 1100 SCFM AIR, 8 BPH MIST, 1 GAL OF 450 FOAMER, 1/4 GAL OF CORROSION INHIBITOR PER 10 BBL'S OF FLUID PUMPED, 65 RPM'S, 1 TO 2 POINTS ON BIT, 350# ON CHART @ COMPRESSOR'S & 250# ON GAGE @ RIG FLOOR = RETURNS TO SURFACE, LIGHT COAL & FINES W / 2 BPH WATER GAIN = 1 BUCKET PER HOUR OFF SAMPLE CATCHER = 95% COAL = ATTENTION NOT ABLE TO DRY UP WELL FOR TEST
	08:00 - 08:30	0.50	EVALFM	TRIP	COMPZN	PUH INSIDE 7" CSG LAYING DOWN JT'S OF DP W / POWER SWIVEL
	08:30 - 09:30	1.00	EVALFM	PRDT	COMPZN	2" OPEN FLOW TEST W / PITOT TUBE TIME = MANIFOLD = PITOT = MCFD = WATER 15 MIN'S = 6.00# = 1.50# = 752 = LIGHT MIST 30 MIN'S = 8.00# = 2.00# = 869 = MED MIST 45 MIN'S = 9.00# = 2.25# = 913 = HEAVY MIST 1 HR = 9.00# = 2.25# = 913 = HEAVY MIST
	09:30 - 10:30	1.00	EVALFM	SIPB	COMPZN	SHUT IN TO BUILD PRESSURE TIME = PRESSURE ISIP = 18# 15 MIN'S = 190# 30 MIN'S = 270# 45 MIN'S = 320# 1 HR = 340#
	10:30 - 11:00	0.50	EVALFM	RURD	COMPZN	HANG BACK POWER SWIVEL & TIE BACK ON TWO LINES
	11:00 - 12:30	1.50	EVALFM	TRIP	COMPZN	COOH W / DP, DC'S & BHA
	12:30 - 13:00	0.50	EVALFM	PULD	COMPZN	SAFETY MEETING & JSA REVIEWS @ START OF ALL OPERATIONS = PU & MU BAKER 9 1/2" ROLLER-CONE UNDER-REAMER
	13:00 - 14:30	1.50	EVALFM	TRIP	COMPZN	RIH W / BHA & DP T/3300'
	14:30 - 15:00	0.50	EVALFM	RURD	COMPZN	TIE BACK ON ONE LINE & PU POWER SWIVEL
	15:00 - 15:30	0.50	EVALFM	SFTY	COMPZN	BOP DRILL & SAFETY MEETING W / ALL PERSONNEL ON LOCATION
	15:30 - 22:30	7.00	EVALFM	OTHR	COMPZN	BREAK CIRC & OPEN ARM'S, UNDER-REAM 6 1/4" HOLE TO 9 1/2" HOLE F/3310'-T/3675' W / 1800 SCFM AIR, 10 BPH MIST, 1 GAL OF 450 FOAMER, 1/4 GAL OF CORROSION INHIBITOR PER 10 BBL'S OF FLUID PUMPED, 800# ON DP, 4 TO 6 POINT'S ON BIT, 75 RPM'S = RETURN'S TO SURFACE, MED COAL, SHALE & SANDSTONE W / 2 BPH WATER GAIN
	22:30 - 02:00	3.50	EVALFM	CIRC	COMPZN	CIRC & C/O T/3675' W / 1500 SCFM AIR, 8 BPH MIST, 1 GAL OF 450 FOAMER, 1/4 GAL OF CORROSION INHIBITOR PER 10 BBL'S OF FLUID PUMPED
	02:00 - 03:00	1.00	EVALFM	TRIP	COMPZN	PUH INSIDE 7" CSG LAYING DOWN JT'S OF DP W / POWER SWIVEL = WORKING UNDER-REAMER ARM'S INTO 7" CSG
	03:00 - 04:00	1.00	EVALFM	PRDT	COMPZN	2" OPEN FLOW TEST W / PITOT TUBE TIME = MANIFOLD = PITOT = MCFD = WATER 15 MIN'S = 8.00# = 2.00# = 869 = LIGHT MIST 30 MIN'S = 10.00# = 2.50# = 970 = MED MIST

Operations Summary Report

Legal Well Name: SAN JUAN 32-8 UNIT 247A

Common Well Name: SAN JUAN 32-8 UNIT 247A

Event Name: COMPLETION

Contractor Name: KEY ENERGY SVCS

Rig Name: KEY 18

Start: 10/21/2004

Rig Release: 11/30/2004

Rig Number: 18

Spud Date: 10/13/2004

End: 11/30/2004

Group:

Date	From - To	Hours	Code	Sub Code	Phase	Description of Operations
10/25/2004	03:00 - 04:00	1.00	EVALFM	PRDT	COMPZN	45 MIN'S = 12.00# = 3.00# = 1065 = MED MIST 1 HR = 12.00# = 3.00# = 1065 = MED MIST
	04:00 - 06:00	2.00	EVALFM	SIPB	COMPZN	SHUT IN TO BUILD PRESSURE TIME = PRESSURE ISIP = 20# 15 MIN'S = 210# 30 MIN'S = 290# 45 MIN'S = 325# 1 HR = 350# 1:15 MIN'S = 360# 1:30 MIN'S = 370# 1:45 MIN'S = 375# 2 HR'S = 380#
10/26/2004	06:00 - 06:30	0.50	EVALFM	OTHR	COMPZN	SURGE # 1 = NATURAL FORMATION PRESSURE @ 380# = RETURNS TO SURFACE, NATURAL GAS W / LIGHT MIST & NO COAL
	06:30 - 07:00	0.50	EVALFM	RURD	COMPZN	HANG BACK SWIVEL & TIE BACK ON TWO LINES
	07:00 - 07:30	0.50	EVALFM	SFTY	COMPZN	SAFETY MEETING & JSA REVIEWS @ START OF ALL OPERATIONS
	07:30 - 09:15	1.75	EVALFM	TRIP	COMPZN	COOH W / DP, DC'S & BHA
	09:15 - 09:45	0.50	EVALFM	PULD	COMPZN	RD & LAY DOWN BAKER UNDER-REAMER = PU & MU 6 1/4" BIT & SUB
	09:45 - 11:15	1.50	EVALFM	TRIP	COMPZN	RIH W / BHA & DP T/3300'
	11:15 - 11:45	0.50	EVALFM	RURD	COMPZN	TIE BACK ON ONE LINE & PU POWER SWIVEL
	11:45 - 12:15	0.50	EVALFM	TRIP	COMPZN	RIH FROM 3300' PU JT'S OF DP W / POWER SWIVEL T/3593', DID NOT TAG FILL
	12:15 - 12:45	0.50	EVALFM	TRIP	COMPZN	PUH INSIDE 7" CSG LAYING DOWN JT'S OF DP W / POWER SWIVEL
	12:45 - 18:30	5.75	EVALFM	OTHR	COMPZN	SURGE # 2 - # 3 - # 4 - # 5 = HYDRAULIC W / 3 GAL'S OF FOAMER AHEAD, 1 BPM WATER, 1500 TO 1800 SCFM AIR, 8 BPH MIST, 1 GAL OF 450 FOAMER, 1/4 GAL OF CORROSION INHIBITOR PER 10 BBL'S OF FLUID PUMPED, CUTTING AIR 3 TIMES TO DROP DP PRESSURE = PRESSURES DURING SURGE @ 1400# TO 1500# DP PRESSURE & 1100# TO 1200# CSG PRESSURE = RETURN'S TO SURFACE, LIGHT TO HEAVY BLACK FOAM WATER W / LIGHT TO MED COAL
	18:30 - 19:00	0.50	EVALFM	SFTY	COMPZN	SAFETY MEETING & JSA REVIEWS @ START OF ALL OPERATIONS
	19:00 - 19:30	0.50	EVALFM	TRIP	COMPZN	RIH FROM 7" CSG PU JT'S OF DP W / POWER SWIVEL TAG @ 3519'
	19:30 - 06:00	10.50	EVALFM	OTHR	COMPZN	R&R C/O F/3519'-T/3593' W / 1100 SCFM AIR, 8 BPH MIST, 1 GAL OF 450 FOAMER, 1/4 GAL OF CORROSION INHIBITOR PER 10 BBL'S OF FLUID PUMPED, 350# ON CHART @ COMPRESSORS & 250# ON GAGE @ RIG FLOOR, 2 TO 6 POINTS ON BIT, 75 TO 65 RPM'S = RETURNS TO SURFACE, MED TO LIGHT COAL & FINES W / 2 BPH WATER GAIN = 6 DOWN TO 2 BUCKETS PER HOUR OFF SAMPLE CATCHER = 95% COAL
10/27/2004	06:00 - 08:30	2.50	EVALFM	OTHR	COMPZN	SAFETY MEETING & JSA REVIEW'S @ START OF ALL OPERATION'S = R&R C/O T/3593' W / 1100 SCFM AIR, 8 BPH MIST, 1 GAL OF 450 FOAMER, 1/4 GAL OF CORROSION INHIBITOR PER 10 BBL'S OF FLUID PUMPED, 350# ON CHART @ COMPRESSOR'S & 250# ON GAGE @ RIG FLOOR, 65 RPM'S, 1 TO 3 POINT'S ON BIT = RETURN'S TO SURFACE, LIGHT COAL & FINE'S W / 1.5 TO 2 BPH WATER GAIN = 2 DOWN TO 1 BUCKET'S PER HOUR OFF SAMPLE CATCHER = 95% COAL
	08:30 - 09:00	0.50	EVALFM	TRIP	COMPZN	PUH INSIDE 7" CSG LAYING DOWN JT'S OF DP W / POWER

Operations Summary Report

Legal Well Name: SAN JUAN 32-8 UNIT 247A
 Common Well Name: SAN JUAN 32-8 UNIT 247A
 Event Name: COMPLETION
 Contractor Name: KEY ENERGY SVCS
 Rig Name: KEY 18

Spud Date: 10/13/2004
 Start: 10/21/2004 End: 11/30/2004
 Rig Release: 11/30/2004 Group:
 Rig Number: 18

Date	From - To	Hours	Code	Sub Code	Phase	Description of Operations
10/27/2004	08:30 - 09:00	0.50	EVALFM	TRIP	COMPZN	SWIVEL
	09:00 - 10:30	1.50	RIGMNT	SVRG	COMPZN	SERVICE RIG, RIG EQUIPMENT & AIR EQUIPMENT
	10:30 - 17:00	6.50	EVALFM	OTHR	COMPZN	SURGE # 6 - # 7 - # 8 - # 9 = HYDRAULIC W / 3 GAL'S OF FOAMER AHEAD, 1 BPM WATER, 1500 TO 1800 SCFM AIR, 8 BPH MIST, 1 GAL OF 450 FOAMER, 1/4 GAL OF CORROSION INHIBITOR PER 10 BBL'S OF FLUID PUMPED, CUTTING AIR 3 TIME'S TO DROP DP PRESSURE = PRESSURE'S DURING SURGE @ 1300# TO 1400# DP PRESSURE & 1100# TO 1300# CSG PRESSURE = RETURN'S TO SURFACE, LIGHT TO HEAVY BLACK FOAM WATER W / TRACE TO MED COAL
	17:00 - 17:30	0.50	EVALFM	TRIP	COMPZN	RIH FROM 7" CSG PU JT'S OF DP W / POWER SWIVEL TAG @ 3488'
	17:30 - 00:00	6.50	EVALFM	OTHR	COMPZN	SAFETY MEETING & JSA REVIEW'S @ START OF ALL OPERATION'S = R&R C/O F/3488'-T/3562' W / 1100 SCFM AIR, 8 BPH MIST, 1 GAL OF 450 FOAMER, 1/4 GAL OF CORROSION INHIBITOR PER 10 BBL'S OF FLUID PUMPED, 350# ON CHART @ COMPRESSOR'S & 250# ON GAGE @ RIG FLOOR, 2 TO 6 POINT'S ON BIT, 75 TO 65 RPM'S = RETURN'S TO SURFACE, HEAVY TO MED COAL & FINE'S W / 2 TO 3 BPH WATER GAIN = 10 DOWN TO 5 BUCKET'S PER HOUR OFF SAMPLE CATCHER = 95% COAL WORKING TIGHT PIPE UP HOLE TO 3480' = BRIDGE CAME LOOSE & STARTED 4 JT'S OF DP OUT OF HOLE, CLOSED RAM'S ON 5 JT OF DP, POWER SWIVEL TURNED SIDEWAY'S & JT'S OF DP BENT IN A CIRCLE. NO INJURY'S ON LOCATION
10/28/2004	00:00 - 01:30	1.50	EVALFM	OTHR	COMPZN	WAITING ON DAYLIGHT FOR WORK SITE ASSESSMENT OF INCIDENT & DAMAGE'S = CORRELATE W / COPC, KEY MANAGEMENT & SAFETY PERSONNEL = ALL PERSONNEL ON LOCATION WERE IN THEIR SAFETY POSITION'S & OUT OF THE WAY, NO INJURY'S
	01:30 - 06:00	4.50	EVALFM	WODL	COMPZN	SAFETY MEETING & JSA REVIEW'S @ START OF ALL OPERATION'S = STANDBY WAITING ON DAYLIGHT = ASSESSMENT OF INCIDENT & DAMAGE'S = CORRELATE W / SAFETY & MANAGEMENT ON INCIDENT & PROCEDURE'S = CORRELATE W / EQUIPMENT & PERSONNEL FOR 10/28/2004 TO CLEAN UP INCIDENT = WEATHER - RAIN & MUD
10/29/2004	07:00 - 18:30	11.50	WELCTL	OTHR	COMPZN	SAFETY MEETING & JSA REVIEW'S @ START OF ALL OPERATION'S = ASSESSMENT OF INCIDENT & DAMAGE'S = CORRELATE W / SAFETY & MANAGEMENT ON INCIDENT & PROCEDURE'S = CORRELATE W / EQUIPMENT & PERSONNEL TO CLEAN UP INCIDENT = CLEAR DERRICK OF RIG BLOCK'S, RU LINE'S ON SWIVEL, WAIT ON TWO CRANE'S, RU CRANE'S, LET 5 JT'S OF DP & SWIVEL OUT OF DERRICK & LAID ON GROUND, RD CRANE'S, SECURED WELL & LOCATION, S.D.O.N. = WEATHER - RAIN, SNOW & MUD
10/30/2004	07:00 - 07:30	0.50	WELCTL	SFTY	COMPZN	SAFETY MEETING & JSA REVIEW'S @ START OF ALL OPERATION'S = ASSESSMENT OF INCIDENT & DAMAGE'S
	07:30 - 08:00	0.50	WELCTL	OWFF	COMPZN	HAD 500# ON CSG = BLOW DOWN WELL
	08:00 - 08:30	0.50	RPCOMP	TRIP	COMPZN	COOH W / ONE JT OF 2 7/8" DP = SHUT BLIND RAM'S
	08:30 - 09:00	0.50	WELCTL	OTHR	COMPZN	ASSESSMENT OF FISH # 1 IN HOLE AS FOLLOWS = 93 JT'S OF 2 7/8" IF DP W / FISH NECKED DOWN 8" FROM TOOL JT, TOTAL 2872' OF 2 7/8" DP IN HOLE, PLUS BHA AS FOLLOWS, 14-3 1/2" IF DC'S 431'.91" IN HOLE W / BIT, BIT SUB, X/O & FN, TOTAL 437'.85" BHA IN HOLE.
	09:00 - 11:00	2.00	SURFEQ	SEQP	COMPZN	CUTTING UP BENT DP & MOVING DP TO EDGE OF LOCATION

Operations Summary Report

Legal Well Name: SAN JUAN 32-8 UNIT 247A

Common Well Name: SAN JUAN 32-8 UNIT 247A

Event Name: COMPLETION

Contractor Name: KEY ENERGY SVCS

Rig Name: KEY 18

Start: 10/21/2004

Rig Release: 11/30/2004

Rig Number: 18

Spud Date: 10/13/2004

End: 11/30/2004

Group:

Date	From - To	Hours	Code	Sub Code	Phase	Description of Operations
10/30/2004	11:00 - 13:00	2.00	SURFEQ	SEQP	COMPZN	CHECKING OUT EQUIPMENT
	13:00 - 15:30	2.50	SURFEQ	EQRP	COMPZN	UNLOAD RECONDITIONED BLOCK'S, NEW DRILLING LINE, NEW HYDRAULIC LINE'S FOR SWIVEL
	15:30 - 18:00	2.50	WELCTL	BOPE	COMPZN	TESTING BLIND RAM'S, PIPE RAM'S & STACK BY WOOD GROUP W / TEST PLUG = 250# FOR 10 MIN'S & 1800# FOR 10 MIN'S = GOOD TEST
	18:00 - 19:00	1.00	WELCTL	OTHR	COMPZN	DRAINED PUMP & LINE'S = SECURED WELL & LOCATION = S.D.O.N.
10/31/2004	07:00 - 08:00	1.00	WELCTL	SFTY	COMPZN	SAFETY MEETING & JSA REVIEW'S @ START OF ALL OPERATION'S = ASSESSMENT OF INCIDENT & DAMAGE'S
	08:00 - 18:30	10.50	WELCTL	OTHR	COMPZN	RD RIG BLOCK'S & DRILLING LINE = RU NEW RECONDITION BLOCK'S & NEW DRILLING LINE = LAID DOWN RIG DERRICK ON CARRIER = INSPECTION OF RIG DERRICK & CROWN
11/1/2004	18:30 - 19:00	0.50	WELCTL	OTHR	COMPZN	SECURED WELL & LOCATION = S.D.O.N.
	06:00 - 06:00	24.00	WELCTL	Woeq	COMPZN	WAITING ON 2 7/8" DP FROM HIGH TECH RENTAL'S = SHUT DOWN OVER SUNDAY
11/2/2004	07:00 - 07:30	0.50	WELCTL	SFTY	COMPZN	SAFETY MEETING & JSA REVIEWS @ START OF ALL OPERATIONS
	07:30 - 08:00	0.50	WELCTL	OWFF	COMPZN	BLOW DOWN WELL = HAD 650# ON CSG
	08:00 - 14:30	6.50	WELCTL	RURD	COMPZN	INSPECTION OF CROWN = RAISED DERRICK = RU EQUIPMENT = RU NEW POWER SWIVEL HOSES
	14:30 - 15:00	0.50	WELCTL	OTHR	COMPZN	SECURED WELL & LOCATION = S.D.O.N. = WAITING ON DP & DC'S DUE TOMORROW TO C/O WORK STRING
11/3/2004	07:00 - 07:30	0.50	WELCTL	SFTY	COMPZN	SAFETY MEETING & JSA REVIEWS @ START OF ALL OPERATIONS
	07:30 - 08:00	0.50	WELCTL	OWFF	COMPZN	BLOW DOWN WELL = HAD 580# ON CSG
	08:00 - 11:30	3.50	WELCTL	Woeq	COMPZN	STANDBY WAITING ON PIPE = TRUCK BROKE DOWN
	11:30 - 13:00	1.50	WELCTL	OTHR	COMPZN	UNLOAD & SPOT PIPE BASKET W / REPLACEMENT PIPE & SUBS
	13:00 - 13:30	0.50	FISH	PULD	COMPZN	GIH PU OVERSHOT & DP TAG TOP OF # 1 FISH @ 417' FROM SURFACE = LATCH ON # 1 FISH W / 417' OF NEW PIPE & 3310' OF FISH IN HOLE, TD @ 3675', LATCHED ON FISH 50' TO DEEP
	13:30 - 16:00	2.50	FISH	OTHR	COMPZN	WORKING # 1 FISH UP HOLE 15' BUT NOT ABLE TO MOVE UP HOLE, HAD 5' OF WORKING AREA UP & DOWN W / DRAG
	16:00 - 17:00	1.00	FISH	RURD	COMPZN	PU & RU POWER SWIVEL
	17:00 - 18:00	1.00	FISH	OTHR	COMPZN	WORKING PIPE 5' UP & DOWN BUT NOT ABEL TO GET ROTATION
11/4/2004	18:00 - 19:00	1.00	FISH	OTHR	COMPZN	SECURED WELL & LOCATION = S.D.O.N.
	07:00 - 07:30	0.50	FISH	SFTY	COMPZN	SAFETY MEETING & JSA REVIEWS @ START OF ALL OPERATIONS
	07:30 - 08:00	0.50	FISH	OTHR	COMPZN	BLOW DOWN WELL = HAD 660# ON CSG
	08:00 - 08:30	0.50	FISH	OTHR	COMPZN	RU WIRELINE SPECIALTIES BACK-OFF EQUIPMENT
	08:30 - 09:45	1.25	FISH	OTHR	COMPZN	RIH W / STRING SHOT & TAG @ 3228' FILL ABOVE FN, PULL UP HOLE & BACKED OFF 1 JT ABOVE FN @ 3214', COOH & RD WIRELINE EQUIPMENT
	09:45 - 10:30	0.75	FISH	PULD	COMPZN	POH & LAID DOWN OVER SHOT
	10:30 - 12:00	1.50	FISH	PULD	COMPZN	COOH LAYING DOWN 91 JT'S OF 2 7/8" CORK-SCREWED DP IN PIPE BASKET = LEFT # 2 FISH IN HOLE, 2 JT'S OF 2 7/8" DP, FN, X/O, 14 JT'S OF 3 1/2" DC'S, BIT SUB & BIT
	12:00 - 13:00	1.00	FISH	PULD	COMPZN	PU DC'S & DP OUT OF PIPE BASKET & PUT ON PIPE RACK = TALLY PIPE
	13:00 - 16:00	3.00	FISH	PULD	COMPZN	GIH PU SCREW IN SUB, BUMPER SUB, JAR'S, 6 JT'S OF 3 1/2" DC'S, INTENSIFIER & DP TAG # 2 FISH @ 3204'
	16:00 - 16:30	0.50	FISH	FISH	COMPZN	TIE BACK ON ONE LINE, SCREWED INTO # 2 FISH @ 3204'
11/5/2004	16:30 - 18:00	1.50	FISH	JAR	COMPZN	JARRING ON # 2 FISH = MOVED TOP OF FISH FROM 3204' TO 3201'
	18:00 - 19:00	1.00	FISH	OTHR	COMPZN	SECURED WELL & LOCATION = S.D.O.N.
	07:00 - 07:30	0.50	FISH	SFTY	COMPZN	SAFETY MEETING & JSA REVIEWS @ START OF ALL OPERATIONS

Operations Summary Report

Legal Well Name: SAN JUAN 32-8 UNIT 247A

Common Well Name: SAN JUAN 32-8 UNIT 247A

Event Name: COMPLETION

Contractor Name: KEY ENERGY SVCS

Rig Name: KEY 18

Spud Date: 10/13/2004

Start: 10/21/2004 End: 11/30/2004

Rig Release: 11/30/2004 Group:

Rig Number: 18

Date	From - To	Hours	Code	Sub Code	Phase	Description of Operations
11/5/2004	07:30 - 08:00	0.50	FISH	OTHR	COMPZN	BLOW DOWN WELL = HAD 720# ON CSG
	08:00 - 15:30	7.50	FISH	JAR	COMPZN	JARRING ON # 2 FISH W / 3 3/4" FISHING TOOL'S = SOLID HIT NOT ABLE TO MOVE FISH UP OR DOWN
	15:30 - 16:00	0.50	FISH	OTHR	COMPZN	BACKED OUT SCREW IN SUB FROM # 2 FISH & TIE BACK ON TWO LINES
	16:00 - 17:15	1.25	FISH	TRIP	COMPZN	COOH W / DP, DC'S & FISHING TOOL'
	17:15 - 18:00	0.75	FISH	PULD	COMPZN	BREAK OUT & LAID DOWN 3 3/4" FISHING TOOLS
	18:00 - 19:00	1.00	FISH	OTHR	COMPZN	SECURED WELL & LOCATION = S.D.O.N.
11/6/2004	07:00 - 07:30	0.50	FISH	SFTY	COMPZN	SAFETY MEETING & JSA REVIEW'S @ START OF ALL OPERATION'S
	07:30 - 08:00	0.50	FISH	OTHR	COMPZN	BLOW DOWN WELL = HAD 765# ON CSG
	08:00 - 09:30	1.50	FISH	PULD	COMPZN	PU & MU 4 3/4" FISHING TOOL'S & DC'S
	09:30 - 11:00	1.50	FISH	TRIP	COMPZN	RIH W / BHA & DP T/3200' = SCREWED INTO # 2 FISH W / SCREW IN SUB @ 3201'
	11:00 - 15:00	4.00	FISH	JAR	COMPZN	JARRING ON # 2 FISH W / 4 3/4" FISHING TOOL'S & DC'S = MOVED # 2 FISH UP HOLE 12' = ABLE TO WORK FISH UP & DOWN 17' BUT NOT ABLE TO WORK PAST 3189', PUSHED # 2 FISH BACK DOWN TO 3201'
	15:00 - 15:30	0.50	FISH	OTHR	COMPZN	BACKED OUT SCREW IN SUB FROM # 2 FISH & TIE BACK ON TWO LINE'S
11/7/2004	15:30 - 17:00	1.50	FISH	TRIP	COMPZN	COOH W / DP, DC'S & FISHING TOOL'S
	17:00 - 18:00	1.00	FISH	PULD	COMPZN	BREAK OUT & LAID DOWN 4 3/4" FISHING TOOL'S
	18:00 - 19:00	1.00	FISH	OTHR	COMPZN	SECURED WELL & LOCATION = S.D.O.N.
	07:00 - 07:30	0.50	STK	SFTY	COMPZN	SAFETY MEETING & JSA REVIEWS @ START OF ALL OPERATIONS
	07:30 - 08:15	0.75	STK	RURD	COMPZN	RU BLUE JET EQUIPMENT = TEST LUBRICATOR TO WELLBORE PRESSURE OF 800# FOR 15 MINS = GOOD TEST
	08:15 - 08:45	0.50	STK	OWFF	COMPZN	BLOW WELL DOWN HAD 800# ON CSG
	08:45 - 09:45	1.00	STK	OTHR	COMPZN	RIH & CHECKED 7" CSG COLLAR'S = TOP 7" CSG COLLAR WIRELINE DEPTH 3173', NEXT COLLAR ESTIMATED@ 3216', TAG TOP OF # 2 FISH @ 3213' = SET CIBP @ 3210' WIRELINE DEPTH, CIBP RATED @ 10,000# UP OR DOWN PRESSURE, COOH W / SETTING TOOL
	09:45 - 10:15	0.50	STK	RURD	COMPZN	RD BLUE JET EQUIPMENT
	10:15 - 11:15	1.00	STK	OTHR	COMPZN	LOAD HOLE W / WATER & TEST CIBP TO 1000# FOR 15 MIN'S = GOOD TEST
	11:15 - 11:45	0.50	STK	PULD	COMPZN	PU & MU WHIPSTOCK & 4 3/4" DC'S
	11:45 - 12:45	1.00	STK	TRIP	COMPZN	RIH W / 5 1/2" WHIPSTOCK, 6 1/4" STARTER MILL, 1 JT OF 3 1/2" IF DP, 4 JT'S OF 4 3/4" DC'S & 2 7/8" DP TO 3200'
	12:45 - 13:00	0.25	STK	OTHR	COMPZN	TAG CIBP @ 3205' & SET SLIPS ON WHIPSTOCK = TOP OF WHIPSTOCK @ 3192'
	13:00 - 13:30	0.50	STK	CIRC	COMPZN	RU POWER SWIVEL & UNLOAD HOLE W / AIR ASSIST
	13:30 - 14:00	0.50	STK	MILL	COMPZN	MILL OFF TOP OF WHIPSTOCK 20" TO CLEAR SLIDE
11/8/2004	14:00 - 14:30	0.50	STK	CIRC	COMPZN	CIRC BOTTOMS UP TO CLEAR UP 7" CSG
	14:30 - 15:00	0.50	STK	PULD	COMPZN	RD POWER SWIVEL & TIE BACK ON TWO LINE'S
	15:00 - 16:15	1.25	STK	TRIP	COMPZN	COOH W DP, DC'S & BHA
	16:15 - 16:30	0.25	STK	SFTY	COMPZN	BOP DRILL
	16:30 - 17:00	0.50	STK	PULD	COMPZN	PU & MU 6 1/4" STARTER & WATERMELLON MILL'S ON 4 3/4" DC'S
	17:00 - 18:15	1.25	STK	TRIP	COMPZN	RIH W / BHA & DP TO 3180'
	18:15 - 18:30	0.25	STK	RURD	COMPZN	TIE BACK ON ONE LINE & PU POWER SWIVEL
	18:30 - 19:00	0.50	STK	OTHR	COMPZN	SECURED WELL & LOCATION = S.D.O.N.
	07:00 - 07:15	0.25	STK	SFTY	COMPZN	SAFETY MEETING & JSA REVIEW'S @ START OF ALL OPERATION'S
	07:15 - 07:45	0.50	STK	CIRC	COMPZN	BREAK CIRC W / AIR ASSIST, 1600 SCFM AIR, 12 BPH MIST, 1 1/2

Operations Summary Report

Legal Well Name: SAN JUAN 32-8 UNIT 247A

Common Well Name: SAN JUAN 32-8 UNIT 247A

Event Name: COMPLETION

Contractor Name: KEY ENERGY SVCS

Rig Name: KEY 18

Start: 10/21/2004

Rig Release: 11/30/2004

Rig Number: 18

Spud Date: 10/13/2004

End: 11/30/2004

Group:

Date	From - To	Hours	Code	Sub Code	Phase	Description of Operations
11/8/2004	07:15 - 07:45	0.50	STK	CIRC	COMPZN	GAL'S OF 450 FOAMER, 1/4 GAL OF CORROSION INHIBITOR PER 10 BBL'S OF FLUID PUMPED
	07:45 - 10:15	2.50	STK	KOST	COMPZN	CUT WINDOW IN 7" CSG OFF WHIPSTOCK W / 6 1/4" STARTER MILL & WATERMELLON MILL F/3191'-T/3200' PLUS 5' OF OPEN HOLE T/3205', REAM OUT & SMOOTH OUT WINDOW
	10:15 - 10:45	0.50	STK	CIRC	COMPZN	CIRC BOTTOM'S UP TO CLEAN UP WINDOW & 7" CSG W / AIR ASSIST, SAME AS ABOVE ON AIR ASSIST
	10:45 - 11:00	0.25	STK	RURD	COMPZN	HANG BACK POWER SWIVEL & TIE BACK ON TWO LINE'S
	11:00 - 12:30	1.50	STK	TRIP	COMPZN	COOH W / 2 7/8" DP, 4 3/4" DC'S, 1- JT OF 3 1/2" IF DP & MILL'S
	12:30 - 13:00	0.50	STK	PULD	COMPZN	LAID DOWN MILL'S & JT OF 3 1/2" DP = PU 6 1/4" BIT & BIT SUB
	13:00 - 14:15	1.25	STK	TRIP	COMPZN	RIH W / 6 1/4" BIT, BIT SUB, 4-4 3/4" DC'S, 1 JT OF 2 7/8" DP, 1-2 7/8" FN W / 1.81 PROFILE & 2 7/8" DP TO 3175'
	14:15 - 14:45	0.50	STK	RURD	COMPZN	TIE BACK ON ONE LINE & PU POWER SWIVEL
	14:45 - 15:15	0.50	STK	CIRC	COMPZN	BREAK CIRC W / 1500 SCFM AIR, 10 BPH MIST, 2 GAL'S OF FOAMER, 1/4 GAL OF CORROSION INHIBITOR PER 10 BBL'S OF FLUID PUMPED
	15:15 - 20:00	4.75	STK	DRLG	COMPZN	DRILLING AHEAD W / 6 1/4" BIT F/3205'-T/3358' W / 1500 SCFM AIR, 10 BPH MIST, 2 GAL'S OF 450 FOAMER, 1/4 GAL OF CORROSION INHIBITOR PER 10 BBL'S OF FLUID PUMPED, RUNNING 6 TO 8 POINT'S ON BIT & 70 TO 75 RPM'S, 350# ON GAGE @ RIG FLOOR
	20:00 - 20:45	0.75	STK	CIRC	COMPZN	CIRC BOTTOM'S UP TO CLEAN UP WELLBORE & 7" CSG
	20:45 - 21:15	0.50	STK	TRIP	COMPZN	PUH INSIDE 7" CSG W / BHA
	21:15 - 22:00	0.75	STK	OTHR	COMPZN	SECURED WELL & LOCATION = S.D.O.N.
11/9/2004	07:00 - 07:30	0.50	STK	SFTY	COMPZN	SAFETY MEETING & JSA REVIEWS @ START OF ALL OPERATIONS
	07:30 - 08:15	0.75	STK	OTHR	COMPZN	START & WARM ENGINES = HAD 0# PRESSURE ON CSG
	08:15 - 08:45	0.50	STK	RURD	COMPZN	RD POWER SWIVEL & TIE BACK ON TWO LINE'S
	08:45 - 10:00	1.25	STK	TRIP	COMPZN	COOH W / DP
	10:00 - 12:00	2.00	STK	PULD	COMPZN	LAID DOWN 4 3/4" DC'S, MOVED DC'S & EQUIPMENT TO EDGE OF LOCATION
	12:00 - 13:00	1.00	STK	PULD	COMPZN	GIH PU 6 1/4" BIT, BIT SUB, 16-3 1/2" DC'S, X/O, 1-2 7/8" DP, 1-2 7/8" FN W / 1.81 PROFILE & DP T/3350'
	13:00 - 13:30	0.50	STK	RURD	COMPZN	TIE BACK ON ONE LINE & PU POWER SWIVEL
	13:30 - 14:30	1.00	STK	DRLG	COMPZN	BREAK CIRC W / AIR ASSIST
	14:30 - 00:00	9.50	STK	DRLG	COMPZN	SAFETY MEETING & JSA REVIEWS @ START OF ALL OPERATIONS = DRILLING AHEAD W / 6 1/4" BIT F/3358'-T/3675' TD W / 1100 SCFM AIR, 10 BPH MIST, 1 TO 2 GAL'S OF 450 FOAMER, 1/4 GAL OF CORROSION INHIBITOR PER 10 BBL'S OF FLUID PUMPED, 400# ON CHART @ COMPRESSORS & 300# ON GAGE @ RIG FLOOR, 60 TO 70 RPM'S & 6 TO 8 POINT'S ON BIT = RETURN'S TO SURFACE, MED COAL, SHALE & SANDSTONE = ATTENTION GOOD GAS KICK & COAL F/3390'-T/3406' UNLOADED BIG HEAD OF GAS & RUNNING COAL
	00:00 - 00:30	0.50	EVALFM	CIRC	COMPZN	CIRC & CORRELATE W / MUD LOGGERS = COAL INTERVALS AS FOLLOWS
						3332'-36' = 4 FT = 0 GAS UNIT'S
						3362'-68' = 6 FT = 148 GAS UNIT'S
						3374'-78' = 4 FT = 160 GAS UNIT'S
						3382'-86' = 4 FT = 182 GAS UNIT'S
						3390'-3406' = 16 FT = 300 GAS UNIT'S
						3528'-32' = 4 FT = 165 GAS UNIT'S
						3534'-42' = 8 FT = 178 GAS UNIT'S
						3544'-60' = 16 FT = 170 GAS UNIT'S
						3570'-80' = 10 FT = 173 GAS UNIT'S

Operations Summary Report

Legal Well Name: SAN JUAN 32-8 UNIT 247A

Common Well Name: SAN JUAN 32-8 UNIT 247A

Event Name: COMPLETION

Start: 10/21/2004

Spud Date: 10/13/2004

Contractor Name: KEY ENERGY SVCS

Rig Release: 11/30/2004

End: 11/30/2004

Rig Name: KEY 18

Rig Number: 18

Group:

Date	From - To	Hours	Code	Sub Code	Phase	Description of Operations
11/9/2004	00:00 - 00:30	0.50	EVALFM	CIRC	COMPZN	3582'-86' = 4 FT = 163 GAS UNIT'S TOTAL OPEN HOLE NET COAL = 76 FT
	00:30 - 06:00	5.50	EVALFM	OTHR	COMPZN	R&R C/O T/3675' W / 1500 SCFM AIR, 10 BPH MIST, 2 GAL'S OF 450 FOAMER, 1/4 GAL OF CORROSION INHIBITOR PER 10 BBL'S OF FLUID PUMPED, 400# TO 450# ON CHART @ COMPRESSORS & 300# TO 350# ON GAGE @ RIG FLOOR, 60 TO 70 RPM'S & 1 TO 2 POINTS ON BIT = RETURN'S TO SURFACE, MED TO LIGHT COAL & FINES W / 3 TO 5 BPH WATER GAIN = 6 DOWN TO 2 BUCKETS PER HOUR OFF SAMPLE CATCHER = 90% COAL
11/10/2004	06:00 - 07:30	1.50	EVALFM	OTHR	COMPZN	SAFETY MEETING & JSA REVIEWS @ START OF ALL OPERATIONS = R&R C/O T/3675' TD W / AIR ASSIST
	07:30 - 08:00	0.50	EVALFM	TRIP	COMPZN	PUH INSIDE 7" CSG W / BHA
	08:00 - 09:00	1.00	EVALFM	PRDT	COMPZN	2" OPEN FLOW TEST W / PITOT TUBE TIME = MANIFOLD = PITOT = MCFD = WATER 15 MIN'S = 25# = 6.25# = 1578 = HEAVY MIST 30 MIN'S = 26# = 6.50# = 1584 = HEAVY MIST 45 MIN'S = 28# = 7.00# = 1644 = HEAVY MIST W / 1/4" STREAM OF WATER 1 HR = 28# = 7.00# = 1644 = HEAVY MIST W / 1/4 TO 1/2 STREAM OF WATER
	09:00 - 10:00	1.00	EVALFM	SIPB	COMPZN	SHUT IN TO BUILD UP PRESSURE TIME = PRESSURE ISIP = 40# 15 MIN'S = 240# 30 MIN'S = 340# 45 MIN'S = 430# 1 HR = 465#
	10:00 - 10:30	0.50	EVALFM	RURD	COMPZN	RD POWER SWIVEL & TIE BACK ON TWO LINE'S
	10:30 - 12:00	1.50	EVALFM	TRIP	COMPZN	COOH W / DP
	12:00 - 12:30	0.50	EVALFM	PULD	COMPZN	PU & MU BAKER 9 1/2" ROLLER TYPE UNDER-REAMER
	12:30 - 13:45	1.25	EVALFM	TRIP	COMPZN	RIH W / 6 1/4" BIT, 9 1/2" UNDER-REAMER, DC'S & DP TO 3180'
	13:45 - 14:15	0.50	EVALFM	RURD	COMPZN	TIE BACK ON ONE LINE & PU POWER SWIVEL
	14:15 - 15:00	0.75	EVALFM	CIRC	COMPZN	BREAK CIRC W / AIR ASSIST & OPEN UNDER-REAMER ARM'S @ 3215', BOTTOM OF WHIPSTOCK WINDOW @ 3200'
	15:00 - 00:30	9.50	EVALFM	REAM	COMPZN	SAFETY MEETING & JSA REVIEWS @ START OF ALL OPERATIONS = UNDER-REAMING AHEAD W / 6 1/4" BIT & 9 1/2" UNDER-REAMER F/3215'-T/3675' TD W / 1600 SCFM AIR, 12 BPH MIST, 1 TO 2 GAL'S OF 450 FOAMER, 1/4 GAL OF CORROSION INHIBITOR PER 10 BBL'S OF FLUID PUMPED, 900# ON CHART @ COMPRESSORS & 800# ON GAGE @ RIG FLOOR, 75 RPM'S & 6 TO 8 POINTS ON BIT = RETURNS TO SURFACE, MED COAL, SHALE & SANDSTONE W / 3 TO 5 BPH WATER GAIN
	00:30 - 02:00	1.50	EVALFM	CIRC	COMPZN	CIRC & CLEAN UP WELLBORE & 7" CSG
	02:00 - 02:30	0.50	EVALFM	TRIP	COMPZN	PUH INSIDE 7" CSG W / BHA
	02:30 - 03:30	1.00	EVALFM	PRDT	COMPZN	2" OPEN FLOW TEST W / PITOT TUBE TIME = MANIFOLD = PITOT = MCFD = WATER 15 MIN'S = 26# = 6.50# = 1584 = HEAVY MIST 30 MIN'S = 28# = 7.00# = 1644 = HEAVY MIST 45 MIN'S = 30# = 7.50# = 1702 = HEAVY MIST W / 1/4" STREAM OF WATER 1 HR = 30# = 7.50# = 1702 = HEAVY MIST W / 1/4" TO 1/2" STREAM OF WATER
	03:30 - 04:00	0.50	EVALFM	RURD	COMPZN	RD POWER SWIVEL & TIE BACK ON TWO LINES

Operations Summary Report

Legal Well Name: SAN JUAN 32-8 UNIT 247A

Common Well Name: SAN JUAN 32-8 UNIT 247A

Event Name: COMPLETION

Contractor Name: KEY ENERGY SVCS

Rig Name: KEY 18

Start: 10/21/2004

Rig Release: 11/30/2004

Rig Number: 18

Spud Date: 10/13/2004

End: 11/30/2004

Group:

Date	From - To	Hours	Code	Sub Code	Phase	Description of Operations
11/10/2004	04:00 - 06:00	2.00	EVALFM	TRIP	COMPZN	COOH W / DP, DC'S & BHA
11/11/2004	06:00 - 07:00	1.00	EVALFM	PULD	COMPZN	SAFETY MEETING & JSA REVIEWS @ START OF ALL OPERATIONS = LAID DOWN UNDER-REAMER
	07:00 - 08:00	1.00	EVALFM	SIPB	COMPZN	SHUT IN TO BUILD UP PRESSURE TIME = PRESSURE ISIP = 45# 15 MIN'S = 235# 30 MIN'S = 330# 45 MIN'S = 420# 1 HR = 455#
	08:00 - 09:15	1.25	EVALFM	TRIP	COMPZN	RIH W / 6 1/4" BIT, BIT SUB, 18-3 1/2" DC'S, 1 JT 2 7/8" DP, 1-2 7/8" FN W / 1.81 PROFILE & DP T/3180'
	09:15 - 09:30	0.25	EVALFM	RURD	COMPZN	TIE BACK ON ONE LINE & PU POWER SWIVEL
	09:30 - 11:00	1.50	EVALFM	OTHR	COMPZN	SAFETY MEETING & JSA REVIEWS @ START OF ALL OPERATIONS = R&R C/O T/3601' W / 1500 SCFM AIR, 10 BPH MIST, 1 TO 2 GAL'S OF 450 FOAMER, 1/4 GAL OF CORROSION INHIBITOR PER 10 BBL'S OF FLUID PUMPED, 400# ON CHART @ COMPRESSORS & 300# ON GAGE @ RIG FLOOR, 75 TO 65 RPM'S 1 TO 3 POINTS ON BIT = RETURNS TO SURFACE, MED COAL, SHALE & SANDSTONE W / 3 TO 5 BPH WATER GAIN
	11:00 - 11:30	0.50	EVALFM	TRIP	COMPZN	PUH INSIDE 7" CSG W / BHA
	11:30 - 13:00	1.50	EVALFM	WOEL	COMPZN	SERVICE RIG & AIR EQUIPMENT
	13:00 - 19:00	6.00	EVALFM	OTHR	COMPZN	SURGES # 1 - # 2 - # 3 @ 1200# DP PRESSURE & 1000# CSG PRESSURE W / 1800 SCFM AIR, 8 BPH MIST, 1 GAL OF 450 FOAMER, 1/4 GAL OF CORROSION INHIBITOR PER 10 BBL'S OF FLUID PUMPED & 3-10 BBL WATER PADS = RETURNS TO SURFACE, SURGE # 1 COLORED WATER, SURGE # 2 BLACK COLORED WATER W / LIGHT FINES, SURGE # 3 HEAVY BLACK WATER W / COAL & FINE'S
	19:00 - 19:30	0.50	EVALFM	SFTY	COMPZN	SAFETY MEETING & JSA REVIEWS @ START OF ALL OPERATIONS
	19:30 - 20:00	0.50	EVALFM	TRIP	COMPZN	RIH FROM 7" CSG & TAG @ 3380'
	20:00 - 06:00	10.00	EVALFM	OTHR	COMPZN	R&R C/O F/3380'-T/3415' W / 1500 SCFM AIR, 10 BPH MIST, 1 GAL OF 450 FOAMER, 1/4 GAL OF CORROSION INHIBITOR PER 10 BBL'S OF FLUID PUMPED, 400# ON CHART @ COMPRESSORS & 300# ON GAGE @ RIG FLOOR, 2 TO 4 POINTS ON BIT & 65 TO 75 RPM'S = RETURNS TO SURFACE, HEAVY TO MED COAL & FINES W / 3 TO 5 BPH WATER GAIN = 10 DOWN TO 4 BUCKET'S PER HOUR OFF SAMPLE CATCHER = 95% COAL
11/12/2004	06:00 - 16:30	10.50	EVALFM	OTHR	COMPZN	SAFETY MEETING & JSA REVIEWS @ START OF ALL OPERATIONS = R&R C/O F/3415'-T/3601' W / 1500 SCFM AIR, 10 BPH MIST, 1 TO 2 GAL'S OF 450 FOAMER, 1/4 GAL OF CORROSION INHIBITOR PER 10 BBL'S OF FLUID PUMPED, 500# ON CHART @ COMPRESSORS & 400# ON GAGE @ RIG FLOOR, 75 TO 65 RPM'S 1 TO 4 POINTS ON BIT = RETURNS TO SURFACE, MED COAL, SHALE & SANDSTONE W / 3 TO 5 BPH WATER GAIN = 6 DOWN TO 1 BUCKETS PER HOUR OFF SAMPLE CATCHER = 95% COAL
	16:30 - 17:00	0.50	EVALFM	TRIP	COMPZN	PUH INSIDE 7" CSG W / BHA
	17:00 - 22:00	5.00	EVALFM	OTHR	COMPZN	SAFETY MEETING & JSA REVIEWS @ START OF ALL OPERATIONS = SURGE'S # 4 - # 5 - # 6 @ 1500# DP PRESSURE & 1200# TO 1300# CSG PRESSURE W / 1800 SCFM AIR, 8 BPH MIST, 1 GAL OF 450 FOAMER, 1/4 GAL OF CORROSION INHIBITOR PER 10 BBL'S OF FLUID PUMPED & 1 BPM WATER WHILE CUTTING AIR OFF 3 TIMES TO DROP DP PRESSURE = RETURNS TO SURFACE, SURGE # 1

Operations Summary Report

Legal Well Name: SAN JUAN 32-8 UNIT 247A
 Common Well Name: SAN JUAN 32-8 UNIT 247A
 Event Name: COMPLETION
 Contractor Name: KEY ENERGY SVCS
 Rig Name: KEY 18

Spud Date: 10/13/2004
 Start: 10/21/2004 End: 11/30/2004
 Rig Release: 11/30/2004 Group:
 Rig Number: 18

Date	From - To	Hours	Code	Sub Code	Phase	Description of Operations
11/12/2004	17:00 - 22:00	5.00	EVALFM	OTHR	COMPZN	COLORED WATER, SURGE # 2 BLACK COLORED WATER W / LIGHT FINE'S, SURGE # 3 HEAVY BLACK WATER W / COAL & FINE'S
	22:00 - 22:30	0.50	EVALFM	TRIP	COMPZN	RIH FROM 7" CSG & TAG @ 3330'
	22:30 - 06:00	7.50	EVALFM	OTHR	COMPZN	R&R C/O F/3330'-T/3384' W / 1500 SCFM AIR, 10 BPH MIST, 1 GAL OF 450 FOAMER, 1/4 GAL OF CORROSION INHIBITOR PER 10 BBL'S OF FLUID PUMPED, 500# ON CHART @ COMPRESSORS & 400# ON GAGE @ RIG FLOOR, 2 TO 4 POINTS ON BIT & 65 TO 75 RPM'S = RETURN'S TO SURFACE, HEAVY TO MED COAL & FINES W / 3 BPH WATER GAIN = 9 DOWN TO 3 BUCKETS PER HOUR OFF SAMPLE CATCHER = 95% COAL
11/13/2004	06:00 - 12:00	6.00	EVALFM	OTHR	COMPZN	SAFETY MEETING & JSA REVIEWS @ START OF ALL OPERATIONS = R&R C/O T/3415' W / 1500 SCFM AIR, 10 BPH MIST, 1 TO 2 GAL'S OF 450 FOAMER, 1/4 GAL OF CORROSION INHIBITOR PER 10 BBL'S OF FLUID PUMPED, 450# ON CHART @ COMPRESSORS & 350# ON GAGE @ RIG FLOOR, 75 TO 65 RPM'S 1 TO 4 POINTS ON BIT = RETURNS TO SURFACE, MED TO LIGHT COAL, W / 3 TO 4 BPH WATER GAIN = 3DOWN TO 1 BUCKETS PER HOUR OFF SAMPLE CATCHER = 90% TO 95% COAL
	12:00 - 12:30	0.50	EVALFM	TRIP	COMPZN	PUH INSIDE 7" CSG W / BHA
	12:30 - 06:00	17.50	EVALFM	OTHR	COMPZN	SAFETY MEETING & JSA REVIEWS @ START OF ALL OPERATIONS = R&R C/O 3380'-T/3477' W / 1500 SCFM AIR, 10 BPH MIST, 2 GAL'S OF 450 FOAMER, 1/4 GAL OF CORROSION INHIBITOR PER 10 BBL'S OF FLUID PUMPED, 450# ON CHART @ COMPRESSORS & 350# ON GAGE @ RIG FLOOR, 1 TO 4 POINTS ON BIT & 65 TO 75 RPM'S = RETURNS TO SURFACE, MED TO LIGHT COAL & FINES W / 3 TO 4 BPH WATER GAIN = 6 DOWN TO 2 BUCKETS PER HOUR OFF SAMPLE CATCHER = 90% TO 95% COAL = ATTENTION WINDOW DOWN HAD SOME COAL BUILD UP IN BOTTLE NECK FROM WINDOW DOWN TO 9 1/2" HOLE @ 3215', REASON FOR PUH TO CHECK TIGHT HOLE & CLEAN UP ABOVE COAL INTERVAL'S
11/14/2004	06:00 - 06:00	24.00	EVALFM	OTHR	COMPZN	SAFETY MEETING & JSA REVIEWS @ START OF ALL OPERATIONS = R&R C/O 3477'-T/3601' W / 1500 SCFM AIR, 10 BPH MIST, 2 GAL'S OF 450 FOAMER, 1/4 GAL OF CORROSION INHIBITOR PER 10 BBL'S OF FLUID PUMPED, 450# ON CHART @ COMPRESSORS & 350# ON GAGE @ RIG FLOOR, 1 TO 4 POINTS ON BIT & 65 TO 75 RPM'S = RETURNS TO SURFACE, MED TO LIGHT COAL & FINES W / 3 TO 5 BPH WATER GAIN = 4 DOWN TO 1.5 BUCKETS PER HOUR OFF SAMPLE CATCHER = 90% TO 95% COAL
11/15/2004	06:00 - 10:30	4.50	EVALFM	OTHR	COMPZN	SAFETY MEETING & JSA REVIEWS @ START OF ALL OPERATIONS = R&R C/O T/3601' W / 1500 SCFM AIR, 10 BPH MIST, 2 GAL'S OF 450 FOAMER, 1/4 GAL OF CORROSION INHIBITOR PER 10 BBL'S OF FLUID PUMPED, 450# ON CHART @ COMPRESSORS & 350# ON GAGE @ RIG FLOOR, 1 TO 4 POINTS ON BIT & 65 TO 75 RPM'S = RETURNS TO SURFACE, LIGHT COAL & FINES W / 3 TO 5 BPH WATER GAIN = 2 DOWN TO 1 BUCKETS PER HOUR OFF SAMPLE CATCHER = 90% TO 95% COAL
	10:30 - 11:00	0.50	EVALFM	TRIP	COMPZN	PUH INSIDE 7" CSG W / BHA
	11:00 - 16:30	5.50	EVALFM	OTHR	COMPZN	TRY TO BREAK DOWN BOTTOM COAL INTERVAL = SURGE'S # 7 - # 8 - # 9 HYDRAULIC W / 3 GAL'S OF 450 FOAMER AHEAD, 1 BPM WATER, 1800 SCFM AIR, 10 BPH MIST, 2 GAL'S OF 450 FOAMER, 1/4 GAL OF CORROSION INHIBITOR PER 10 BBL'S OF FLUID PUMPED, CUTTING AIR 3 TIMES TO DROP DP PRESSURE, 1450#

Operations Summary Report

Legal Well Name: SAN JUAN 32-8 UNIT 247A

Common Well Name: SAN JUAN 32-8 UNIT 247A

Event Name: COMPLETION

Contractor Name: KEY ENERGY SVCS

Rig Name: KEY 18

Start: 10/21/2004

Rig Release: 11/30/2004

Rig Number: 18

Spud Date: 10/13/2004

End: 11/30/2004

Group:

Date	From - To	Hours	Code	Sub Code	Phase	Description of Operations
11/15/2004	11:00 - 16:30	5.50	EVALFM	OTHR	COMPZN	TO 1500# DP PRESSURE & 1350# TO 1450# CSG PRESSURE = RETURNS TO SURFACE, SURGE # 7 BLACK FOAM WATER = SURGE # 8 BLACK FOAM WATER W / TRACE OF COAL = SURGE # 9 HEAVY BLACK FOAM WATER W / COAL & FINES
	16:30 - 16:45	0.25	EVALFM	SFTY	COMPZN	BOP DRILL
	16:45 - 17:00	0.25	EVALFM	TRIP	COMPZN	RIH FROM 7" CSG & TAG @ 3320'
	17:00 - 06:00	13.00	EVALFM	OTHR	COMPZN	SAFETY MEETING & JSA REVIEWS @ START OF ALL OPERATIONS = R&R C/O F/3320'-T/3384' W / 1600 SCFM AIR, 10 BPH MIST, 2 GALS OF 450 FOAMER, 1/4 GAL OF CORROSION INHIBITOR PER 10 BBL'S OF FLUID PUMPED, 450# ON CHART @ COMPRESSORS & 350# ON GAGE @ RIG FLOOR, 2 TO 5 POINT'S ON BIT, 65 TO 75 RPM'S = RETURNS TO SURFACE, MED COAL & FINE'S W / 3 TO 4 BPH WATER GAIN = 7 DOWN TO 3 BUCKETS PER HOUR OFF SAMPLE CATCHER = 90% TO 95% COAL
11/16/2004	06:00 - 06:00	24.00	EVALFM	OTHR	COMPZN	SAFETY MEETING & JSA REVIEWS @ START OF ALL OPERATIONS = R&R C/O F/3384'-T/3477' W / 1600 SCFM AIR, 10 BPH MIST, 2 GAL'S OF 450 FOAMER, 1/4 GAL OF CORROSION INHIBITOR PER 10 BBL'S OF FLUID PUMPED, 450# ON CHART @ COMPRESSORS & 350# ON GAGE @ RIG FLOOR, 1 TO 4 POINTS ON BIT, 65 TO 75 RPM'S = RETURNS TO SURFACE, HEAVY TO MED COAL & FINES W / 3 TO 5 BPH WATER GAIN = 9 DOWN TO 3 BUCKETS PER HOUR OFF SAMPLE CATCHER = 90% TO 95% COAL
11/17/2004	06:00 - 06:00	24.00	EVALFM	OTHR	COMPZN	SAFETY MEETING & JSA REVIEWS @ START OF ALL OPERATIONS = R&R C/O F/3477'-T/3601' W / 1600 SCFM AIR, 10 BPH MIST, 2 GAL'S OF 450 FOAMER, 1/4 GAL OF CORROSION INHIBITOR PER 10 BBL'S OF FLUID PUMPED, 450# ON CHART @ COMPRESSORS & 350# ON GAGE @ RIG FLOOR, 1 TO 5 POINTS ON BIT, 65 TO 75 RPM'S = RETURNS TO SURFACE, MED COAL & FINES W / 3 TO 5 BPH WATER GAIN = 6 DOWN TO 2 BUCKETS PER HOUR OFF SAMPLE CATCHER = 90% TO 95% COAL
11/18/2004	06:00 - 09:00	3.00	EVALFM	OTHR	COMPZN	SAFETY MEETING & JSA REVIEWS @ START OF ALL OPERATIONS = R&R C/O T/3601' W / 1600 SCFM AIR, 10 BPH MIST, 2 GAL'S OF 450 FOAMER, 1/4 GAL OF CORROSION INHIBITOR PER 10 BBL'S OF FLUID PUMPED, 500# ON CHART @ COMPRESSORS & 400# ON GAGE @ RIG FLOOR, 1 TO 3 POINT'S ON BIT, 65 TO 75 RPM'S = RETURN'S TO SURFACE, LIGHT COAL & FINES W / 3 TO 5 BPH WATER GAIN = 2 BUCKETS PER HOUR OFF SAMPLE CATCHER = 90% TO 95% COAL
	09:00 - 09:30	0.50	EVALFM	TRIP	COMPZN	PUH INSIDE 7" CSG W / BHA
	09:30 - 10:30	1.00	EVALFM	PRDT	COMPZN	2" OPEN FLOW TEST W / PITOT TUBE TIME = MANIFOLD = PITOT = MCFD = WATER 15 MIN'S = 40# = 10.00# = 1948 = MED MIST 30 MIN'S = 42# = 10.50# = 1991 = MED MIST 45 MIN'S = 45# = 11.25# = 2085 = HEAVY MIST W / 1/8" STREAM OF WATER 1 HR = 45# = 11.25# = 2085 = HEAVY MIST W / 1/4" STREAM OF WATER
	10:30 - 11:30	1.00	EVALFM	SIPB	COMPZN	SHUT IN TO BUILD PRESSURE TIME = PRESSURE ISIP = 50# 15 MIN'S = 220# 30 MIN'S = 360# 45 MIN'S = 450#

Operations Summary Report

Legal Well Name: SAN JUAN 32-8 UNIT 247A

Common Well Name: SAN JUAN 32-8 UNIT 247A

Event Name: COMPLETION

Contractor Name: KEY ENERGY SVCS

Rig Name: KEY 18

Start: 10/21/2004

Rig Release: 11/30/2004

Rig Number: 18

Spud Date: 10/13/2004

End: 11/30/2004

Group:

Date	From - To	Hours	Code	Sub Code	Phase	Description of Operations
11/18/2004	10:30 - 11:30	1.00	EVALFM	SIPB	COMPZN	1 HR = 520#
	11:30 - 18:00	6.50	EVALFM	OTHR	COMPZN	SURGES # 10 - # 11 - # 12 HYDRAULIC W / 3 GAL'S OF FOAMER AHEAD & 1 BPM WATER W / 1800 SCFM AIR, 10 BPH MIST, 1 GAL OF 450 FOAMER, 1/4 GAL OF CORROSION INHIBITOR PER 10 BBL'S OF FLUID PUMPED, CUTTING OFF AIR 3 TIMES TO DROP DP PRESSURE = SURGES DP PRESSURE @ 1200# TO 1500# & CSG PRESSURE @ 1000# TO 1300# = RETURNS TO SURFACE = SURGE # 10 BLACK FOAM WATER & NO COAL = SURGE # 11 HEAVY BLACK FOAM WATER W / TRACE OF COAL = SURGE # 12 HEAVY BLACK FOAM WATER W / MED COAL
	18:00 - 18:30	0.50	EVALFM	TRIP	COMPZN	SAFETY MEETING & JSA REVIEWS @ START OF ALL OPERATIONS = RIH FROM 7" CSG & TAG @ 3360'
	18:30 - 20:00	1.50	EVALFM	OTHR	COMPZN	R&R C/O F/3360'-T/3375' W / 1600 SCFM AIR, 10 BPH MIST, 2 GAL'S OF 450 FOAMER, 1/4 GAL OF CORROSION INHIBITOR PER 10 BBL'S OF FLUID PUMPED, 500# ON CHART @ COMPRESSORS & 400# ON GAGE @ RIG FLOOR, 3 TO 6 POINTS ON BIT, 75 RPM'S = RETURN'S TO SURFACE, HEAVY COAL & FINES W / 3 BPH WATER GAIN = 10 BUCKETS PER HOUR OFF SAMPLE CATCHER = 90% TO 95% COAL = ATTENTION PRESSURE GOING UP TO 580# BRIDGE UP HOLE
	20:00 - 22:00	2.00	EVALFM	TRIP	COMPZN	PUH & WORKING TIGHT PIPE THROUGH BOTTLE NECK INTO WHIPSTOCK WINDOW F/3215'-T/3191'
	22:00 - 06:00	8.00	EVALFM	OTHR	COMPZN	R&R C/O F/3200'-T/3352' W / 1600 SCFM AIR, 10 BPH MIST, 2 GAL'S OF 450 FOAMER, 1/4 GAL OF CORROSION INHIBITOR PER 10 BBL'S OF FLUID PUMPED, 1 TO 5 POINTS ON BIT, 65 TO 75 RPM'S, 500# TO 550# ON CHART @ COMPRESSORS & 400# TO 450# ON GAGE @ RIG FLOOR = RETURNS TO SURFACE, HEAVY TO LIGHT COAL & FINES W / 3 BPH WATER GAIN = 6 DOWN TO 2 BUCKET'S PER HOUR OFF SAMPLE CATCHER = 90% TO 95% COAL
11/19/2004	06:00 - 08:00	2.00	EVALFM	OTHR	COMPZN	SAFETY MEETING & JSA REVIEWS @ START OF ALL OPERATIONS = R&R C/O F/3352' W / 1600 SCFM AIR, 10 BPH MIST, 2 GAL'S OF 450 FOAMER, 1/4 GAL OF CORROSION INHIBITOR PER 10 BBL'S OF FLUID PUMPED, 500# ON CHART @ COMPRESSORS & 400# ON GAGE @ RIG FLOOR, 3 TO 6 POINTS ON BIT, 75 RPM'S = RETURNS TO SURFACE, MED COAL & FINES W / 3 BPH WATER GAIN = 5 TO 7 BUCKETS PER HOUR OFF SAMPLE CATCHER = 80% COAL = ATTENTION PRESSURE GOING UP SLOWLY, BRIDGE UP HOLE
	08:00 - 09:00	1.00	EVALFM	TRIP	COMPZN	PUH & WORKING TIGHT PIPE THROUGH BOTTLE NECK INTO WHIPSTOCK WINDOW F/3215'-T/3191'
	09:00 - 06:00	21.00	EVALFM	OTHR	COMPZN	SAFETY MEETING & JSA REVIEWS @ START OF ALL OPERATIONS = R&R C/O F/3200'-T/3384' W / 1800 SCFM AIR, 10 BPH MIST, 2 GAL'S OF 450 FOAMER, 1/4 GAL OF CORROSION INHIBITOR PER 10 BBL'S OF FLUID PUMPED, 1 TO 6 POINTS ON BIT, 65 TO 75 RPM'S, 500# TO 550# ON CHART @ COMPRESSORS & 400# TO 450# ON GAGE @ RIG FLOOR = RETURNS TO SURFACE, HEAVY TO MED COAL & FINES W / 3 BPH WATER GAIN = 4 TO 6 BUCKETS PER HOUR OFF SAMPLE CATCHER = 75% TO 80% COAL
11/20/2004	06:00 - 06:00	24.00	EVALFM	OTHR	COMPZN	SAFETY MEETING & JSA REVIEW'S @ START OF ALL OPERATION'S = R&R C/O & CONDITION HOLE F/3384'-T/3415' W / 1800 SCFM AIR, 10 BPH MIST, 2 GAL'S OF 450 FOAMER, 1 GAL OF POLYMER, 1/4 GAL OF CORROSION INHIBITOR PER 10 BBL'S OF

Operations Summary Report

Legal Well Name: SAN JUAN 32-8 UNIT 247A

Common Well Name: SAN JUAN 32-8 UNIT 247A

Event Name: COMPLETION

Contractor Name: KEY ENERGY SVCS

Rig Name: KEY 18

Spud Date: 10/13/2004

Start: 10/21/2004

End: 11/30/2004

Rig Release: 11/30/2004

Group:

Rig Number: 18

Date	From - To	Hours	Code	Sub Code	Phase	Description of Operations
11/20/2004	06:00 - 06:00	24.00	EVALFM	OTHR	COMPZN	FLUID PUMPED, 550# ON CHART @ COMPRESSOR'S & 450# ON GAGE @ RIG FLOOR, 2 TO 6 POINT'S ON BIT, 75 TO 65 RPM'S = RETURN'S TO SURFACE, HEAVY TO MED COAL & FINE'S W / 3 BPH WATER GAIN = 12 DOWN TO 3 BUCKET'S PER HOUR OFF SAMPLE CATCHER = 75% TO 85% COAL
11/21/2004	06:00 - 06:00	24.00	EVALFM	OTHR	COMPZN	SAFETY MEETING & JSA REVIEW'S @ START OF ALL OPERATION'S = R&R C/O & CONDITION HOLE F/3384'-T/3415' W / 1600 TO 1800 SCFM AIR, 10 TO 12 BPH MIST, 3 GAL'S OF 450 FOAMER, 2 GAL'S OF POLYMER, 1/4 GAL OF CORROSION INHIBITOR PER 10 BBL'S OF FLUID PUMPED, 600# ON CHART @ COMPRESSOR'S & 500# ON GAGE @ RIG FLOOR, 1 TO 5 POINT'S ON BIT, 75 TO 65 RPM'S = RETURN'S TO SURFACE, MED COAL & FINE'S W / 3 TO 5 BPH WATER GAIN = 8 TO 4 BUCKET'S PER HOUR OFF SAMPLE CATCHER = 70% COAL
11/22/2004	06:00 - 14:30	8.50	EVALFM	OTHR	COMPZN	SAFETY MEETING & JSA REVIEW'S @ START OF ALL OPERATION'S = R&R C/O & CONDITION HOLE F/3384'-T/3477' W / 1600 TO 1800 SCFM AIR, 10 TO 12 BPH MIST, 3 GAL'S OF 450 FOAMER, 2 GAL'S OF POLYMER, 1/4 GAL OF CORROSION INHIBITOR PER 10 BBL'S OF FLUID PUMPED, 600# TO 700# ON CHART @ COMPRESSOR'S & 500# TO 600# ON GAGE @ RIG FLOOR, 1 TO 5 POINT'S ON BIT, 75 TO 65 RPM'S = RETURN'S TO SURFACE, MED COAL & FINE'S W / 3 TO 5 BPH WATER GAIN = 5 TO 1.5 BUCKET'S PER HOUR OFF SAMPLE CATCHER = 70% COAL
	14:30 - 16:00	1.50	EVALFM	OTHR	COMPZN	WORKING TIGHT PIPE UP HOLE TO 3380'
	16:00 - 06:00	14.00	EVALFM	OTHR	COMPZN	SAFETY MEETING & JSA REVIEW'S @ START OF ALL OPERATION'S = R&R C/O & CONDITION HOLE F/3380'-T/3508' W / 1800 SCFM AIR, 8 TO 12 BPH MIST, 3 GAL'S OF 450 FOAMER, 3 GAL'S OF POLYMER, 1/4 GAL OF CORROSION INHIBITOR PER 10 BBL'S OF FLUID PUMPED, 600# TO 700# ON CHART @ COMPRESSOR'S & 500# TO 600# ON GAGE @ RIG FLOOR, 1 TO 4 POINT'S ON BIT, 65 TO 75 RPM'S = RETURN'S TO SURFACE, MED COAL & FINE'S W / 3 TO 5 BPH WATER GAIN = 6 TO 2 BUCKET'S PER HOUR OFF SAMPLE CATCHER = 70% COAL
11/23/2004	06:00 - 06:00	24.00	EVALFM	OTHR	COMPZN	SAFETY MEETING & JSA REVIEW'S @ START OF ALL OPERATIONS = R&R C/O & CONDITION HOLE F/3508'-T/3675' TD W / 1800 SCFM AIR, 8 TO 12 BPH MIST, 3 GAL'S OF 450 FOAMER, 3 GAL'S OF POLYMER, 1/4 GAL OF CORROSION INHIBITOR PER 10 BBL'S OF FLUID PUMPED, 600# TO 700# ON CHART @ COMPRESSORS & 500# TO 600# ON GAGE @ RIG FLOOR, 1 TO 4 POINTS ON BIT, 65 TO 75 RPM'S = RETURNS TO SURFACE, HEAVY TO MED COAL & FINES W / 3 TO 5 BPH WATER GAIN = 10 TO 2 BUCKETS PER HOUR OFF SAMPLE CATCHER = 70% COAL
11/24/2004	06:00 - 08:30	2.50	EVALFM	OTHR	COMPZN	SAFETY MEETING & JSA REVIEW'S @ START OF ALL OPERATION'S = R&R C/O & CONDITION HOLE T/3675' TD W / 1800 SCFM AIR, 8 TO 12 BPH MIST, 3 GAL'S OF 450 FOAMER, 3 GAL'S OF POLYMER, 1/4 GAL OF CORROSION INHIBITOR PER 10 BBL'S OF FLUID PUMPED, 600# ON CHART @ COMPRESSOR'S & 500# ON GAGE @ RIG FLOOR, 1 TO 2POINT'S ON BIT, 65 RPM'S = RETURNS TO SURFACE, LIGHT COAL & FINES W / 3 TO 5 BPH WATER GAIN = 1.5 BUCKETS PER HOUR OFF SAMPLE CATCHER = 70% COAL
	08:30 - 09:30	1.00	EVALFM	TRIP	COMPZN	SHORT TRIP INSIDE 7" CSG & BACK TO TD W / 3' OF FILL & ONE

CONOCOPHILLIPS CO
Operations Summary Report

Page 14 of 16

Legal Well Name: SAN JUAN 32-8 UNIT 247A
Common Well Name: SAN JUAN 32-8 UNIT 247A
Event Name: COMPLETION
Contractor Name: KEY ENERGY SVCS
Rig Name: KEY 18

Spud Date: 10/13/2004
Start: 10/21/2004 End: 11/30/2004
Rig Release: 11/30/2004 Group:
Rig Number: 18

Date	From - To	Hours	Code	Sub Code	Phase	Description of Operations
11/24/2004	08:30 - 09:30	1.00	EVALFM	TRIP	COMPZN	TIGHT SPOT @ 3410'-25', PUH INSIDE 7" CSG
	09:30 - 10:00	0.50	EVALFM	RURD	COMPZN	HANG BACK POWER SWIVEL & TIE BACK ON TWO LINES
	10:00 - 12:00	2.00	EVALFM	TRIP	COMPZN	COOH W / DP, DC'S & BHA
	12:00 - 13:30	1.50	EVALFM	RURD	COMPZN	RU 5 1/2" RAM'S & EQUIPMENT = PU & MU TIW H-LATCH COLLAR & SETTING TOOLS ON JT OF 2 7/8" DP & LAID DOWN ON CATWALK
	13:30 - 14:15	0.75	EVALFM	PRTS	COMPZN	TEST 5 1/2" RAM'S TO 250# FOR 10 MIN'S & 500# 20 MIN'S W / WELLBORE PRESSURE = GOOD TEST
	14:15 - 16:15	2.00	CASING	PULD	COMPZN	PU & MU 6 1/4" BIT, BIT SUB, 12 JT'S OF 5 1/2" CSG, H-LATCH COLLAR, SETTING TOOL, FLOAT & X / O TO DP
	16:15 - 17:30	1.25	CASING	TRIP	COMPZN	RIH W / BHA & DP T/3163'
	17:30 - 18:00	0.50	CASING	RURD	COMPZN	TIE BACK ON ONE LINE & PU POWER SWIVEL
	18:00 - 19:00	1.00	CASING	CIRC	COMPZN	BREAK CIRC W / AIR ASSIST
	19:00 - 21:00	2.00	CASING	OTHR	COMPZN	WORKING 5 1/2" LINER DOWN HOLE TO TD @ 3675' W / AIR ASSIST = GOOD HOLE CONDITIONS, ONE TIGHT SPOT F/3410'-25' W / 3 FT OF FILL IN RAT HOLE
	21:00 - 21:15	0.25	CASING	OTHR	COMPZN	RELEASED OF H-LATCH COLLAR W / LINER SET AS FOLLOWS 6 1/4" BIT SET @ 3675' E.O.C. 12 JT'S OF 5 1/2" CSG SET @ 3672'.80" BOTTOM OF H-LATCH COLLAR SET @ 3138'.67" TOP OF H-LATCH COLLAR SET @ 3136'.70" OVERLAP OF 7" CSG WINDOW = 54'.73" WHIPSTOCK WINDOW F/3191'-T/3200' 534'.13" OF 5 1/2" J-55 15.50# CSG IN WELL
	21:15 - 22:30	1.25	CASING	CIRC	COMPZN	CIRC OFF TOP OF H-LATCH COLLAR TO CLEAN UP WELLBORE W / AIR ASSIST
	22:30 - 00:00	1.50	CASING	OTHR	COMPZN	DRAINED PUMP & LINES = SECURED WELL & LOCATION = S.D.O.N.
11/25/2004	07:00 - 07:30	0.50	EVALFM	SFTY	COMPZN	SAFETY MEETING & JSA REVIEWS @ START OF ALL OPERATIONS
	07:30 - 08:00	0.50	EVALFM	OWFF	COMPZN	7 HR SHUT IN PRESSURE 675# ON CSG = BLOW DOWN WELL
	08:00 - 08:30	0.50	EVALFM	RURD	COMPZN	RD POWER SWIVEL
	08:30 - 11:30	3.00	EVALFM	PULD	COMPZN	COOH LAYING DOWN DP, DC'S & SETTING TOOL
	11:30 - 11:45	0.25	PERFOP	SFTY	COMPZN	SAFETY MEETING & JSA REVIEWS @ START OF ALL OPERATIONS
	11:45 - 12:00	0.25	PERFOP	RURD	COMPZN	RU BLUE JET PERFORATING EQUIPMENT
	12:00 - 12:15	0.25	EVALFM	PRTS	COMPZN	TEST WIRELINE LUBRICATOR W / WELLBORE PRESSURE TO 250# 10 MIN'S & 550# 10 MIN'S = GOOD TEST
	12:15 - 14:00	1.75	PERFOP	PERF	COMPZN	RIH & PERFORATED 5 1/2" LINER W / 3 1/8" CSG GUNS, 0.75" DIA HOLE'S, 4 SPF, 120 DEGREE PHASING AS FOLLOWS 3570'-85' = 15 FT = 60 HOLE'S 3544'-60' = 16 FT = 64 HOLE'S 3534'-41' = 7 FT = 28 HOLE'S 3527'-32' = 5 FT = 20 HOLE'S 3390'-3406' = 16 FT = 64 HOLE'S 3381'-86' = 5 FT = 20 HOLE'S 3374'-78' = 4 FT = 16 HOLE'S 3362'-68' = 6 FT = 24 HOLE'S 3332'-36' = 4 FT = 16 HOLE'S NET TOTAL = 78 FT = 312 HOLE'S
	14:00 - 14:15	0.25	PERFOP	RURD	COMPZN	RD BLUE JET PERFORATING EQUIPMENT
	14:15 - 14:45	0.50	EVALFM	RURD	COMPZN	RU 2 3/8" RAM'S & EQUIPMENT
	14:45 - 15:30	0.75	EVALFM	PRTS	COMPZN	TEST 2 3/8" RAM'S 250# 10 MIN'S & 1800# 10 MIN'S = GOOD TEST ATTENTION FINAL FLOW TEST

Operations Summary Report

Legal Well Name: SAN JUAN 32-8 UNIT 247A

Common Well Name: SAN JUAN 32-8 UNIT 247A

Event Name: COMPLETION

Start: 10/21/2004

Spud Date: 10/13/2004

Contractor Name: KEY ENERGY SVCS

Rig Release: 11/30/2004

End: 11/30/2004

Rig Name: KEY 18

Rig Number: 18

Group:

Date	From - To	Hours	Code	Sub Code	Phase	Description of Operations
11/25/2004	14:45 - 15:30	0.75	EVALFM	PRTS	COMPZN	1:15 MIN'S STABILIZED 2" FLOW TEST W / PITOT TUBE TIME = MANIFOLD = PITOT = MCFD = WATER 1:15 MIN'S = 95# = 23.75# = 3200 = HEAVY MIST W / 1/8" TO 1/4" STREAM OF WATER
	15:30 - 18:00	2.50	EVALFM	PULD	COMPZN	GIH PU 3 3/4" BIT, BIT SUB & 2 3/8" TUBING TAG @ 3640'
	18:00 - 18:30	0.50	EVALFM	RURD	COMPZN	PU POWER SWIVEL & BREAK CIRC W / AIR ASSIST
	18:30 - 20:00	1.50	EVALFM	CIRC	COMPZN	C/O BRIDGE & FILL TO PBTD @ 3672' W / AIR ASSIST
	20:00 - 20:30	0.50	EVALFM	TRIP	COMPZN	PUH ABOVE PERFORATIONS W / BHA
	20:30 - 21:00	0.50	EVALFM	OTHR	COMPZN	DRAINED PUMP & LINES, SECURED WELL & LOCATION = SHUT DOWN OVER HOLIDAY
11/28/2004	07:00 - 07:30	0.50	RPCOMP	SFTY	COMPZN	SAFETY MEETING & JSA REVIEWS @ START OF ALL OPERATIONS
	07:30 - 08:15	0.75	RPCOMP	OWFF	COMPZN	START & WARM ENGINES = BLOW DOWN WELL, HAD 700# ON CSG
	08:15 - 08:30	0.25	RPCOMP	RCST	COMPZN	RIH FROM TOP OF LINER & TAG PBTD @ 3672'
	08:30 - 09:30	1.00	RPCOMP	RCST	COMPZN	COOH W / TUBING & BHA
	09:30 - 09:45	0.25	RPCOMP	OTHR	COMPZN	PU & MU PRODUCTION TUBING BHA
	09:45 - 10:30	0.75	RPCOMP	RCST	COMPZN	RIH W / BHA & TUBING
	10:30 - 10:45	0.25	RPCOMP	OTHR	COMPZN	LAND HANGER W / PRODUCTION TUBING SET AS FOLLOWS 1 1/2" SAW TOOTH COLLAR SET @ E.O.T. 3651'.71" 1 1/2" SEATING NIPPLE SET @ 3650'.86" 2 3/8" X-OVER SET @ 3650'.03" 2 3/8" MUD ANCHOR SET @ 3649'.20" 2 3/8" FN W / 1.78" PROFILE SET @ 3618'.07" 2 3/8" 115 JT'S TUBING W / 10' SUB SET @ 3617'.24" TOTAL OF 115 JT'S OF 2 3/8" EUE 8RD J-55 4.7# TUBING W / 1-10' SUB UNDER TOP JT @ HANGER PLUS 1 JT OF 2 3/8" MUD ANCHOR W / ONE 1/2" HOLE @ UPSET ON TOP OF JT PLUS 1-2 3/8" FN 1.78" & 1- 1 1/2" SEATING NIPPLE @ BOTTOM OF MUD ANCHOR W / SAW TOOTH COLLAR
	10:45 - 12:30	1.75	RPCOMP	NUND	COMPZN	ND BOP'S & NU WELLHEAD
	12:30 - 12:45	0.25	RPCOMP	SFTY	COMPZN	SAFETY MEETING & JSA REVIEW'S @ START OF ALL OPERATIONS
	12:45 - 13:30	0.75	RPCOMP	SRVY	COMPZN	RU B&R WIRELINE EQUIPMENT & MULTI-SHOT DIRECTIONAL TOOLS
	13:30 - 16:00	2.50	RPCOMP	SRVY	COMPZN	RUN SURVEYS EVERY 200' IN 7" CSG & 100' IN 5 1/2" CSG = 2 DEGREES @ WINDOW & 3.4 DEGREES @ 3588' BELOW COAL = 3588.0 FEET EQUALS 19'.64" FEET @ 166.59 DEGREES
	16:00 - 16:30	0.50	RPCOMP	SRVY	COMPZN	RD MULTI-SHOT TOOL'S
	16:30 - 17:30	1.00	RPEQPT	MPSP	COMPZN	PULLED BP PLUG OUT OF FN @ 3618' = RD B&R WIRELINE EQUIPMENT
	17:30 - 18:30	1.00	RPCOMP	OTHR	COMPZN	SECURED WELL & LOCATION = S.D.O.N.
11/30/2004	07:00 - 07:30	0.50	RPCOMP	SFTY	COMPZN	SAFETY MEETING & JSA REVIEW'S @ START OF ALL OPERATION'S
	07:30 - 08:30	1.00	RPCOMP	OWFF	COMPZN	START & WARM ENGINE'S = BLOW DOWN WELL, HAD 700# ON CSG
	08:30 - 09:30	1.00	RPCOMP	RURD	COMPZN	SPOT IN FLOAT W / ROD'S & PUMP = RU ROD EQUIPMENT
	09:30 - 11:00	1.50	RPCOMP	PULD	COMPZN	GIH PU PUMP & ROD'S
	11:00 - 11:30	0.50	RPCOMP	HOSO	COMPZN	SPACE OUT ROD'S = RAN 1' GAS ANCHOR ON BOTTOM OF PUMP, H.F PUMP BY ENERGY PUMP & SUPPLY, 2" X 1 1/2" X 14' RWAL-ZDV NO # COPC-# 201, 3-25' 1 1/4" SINKER BAR'S, 141-3/4" PLAIN ROD'S, 1-10' 3/4" PONY ROD, 1-22" POLISH ROD, SPACED OUT ON TAG
	11:30 - 12:15	0.75	RPCOMP	PRTS	COMPZN	TEST TUBING & PUMP TO 500# & HELD 15 MIN'S = GOOD TEST =

Operations Summary Report

Legal Well Name: SAN JUAN 32-8 UNIT 247A

Common Well Name: SAN JUAN 32-8 UNIT 247A

Event Name: COMPLETION

Contractor Name: KEY ENERGY SVCS

Rig Name: KEY 18

Start: 10/21/2004

Rig Release: 11/30/2004

Rig Number: 18

Spud Date: 10/13/2004

End: 11/30/2004

Group:

Date	From - To	Hours	Code	Sub Code	Phase	Description of Operations
11/30/2004	11:30 - 12:15	0.75	RPCOMP	PRTS	COMPZN	bled off pressure & stroked pump w / rig block's up to 500# & held 15 min's = good test = bled off & hang off on stuffen box
	12:15 - 16:30	4.25	MOVE	RURD	DEMOB	RD & release rig & equipment
	16:30 - 17:00	0.50	MOVE	OTHR	DEMOB	secured well & location = S.D.O.N. = released rig & equipment on 11/29/2004 @ 17:00 PM
12/1/2004	07:00 - 07:30	0.50	MOVE	SFTY	DEMOB	safety meeting & JSA reviews @ start of all operations
	07:30 - 11:30	4.00	MOVE	DMOB	DEMOB	loading out equipment on floats
	11:30 - 17:00	5.50	MOVE	DMOB	DEMOB	moving rig & equipment to keys yard in town
						ATTENTION JOB COMPLET - DROP FROM REPORT
						RELEASE WELL TO PRODUCTION DEPT. TO PRODUCE BASIN FRUITLAND COAL INTERVALS