

UNITED STATES
DEPARTMENT OF THE INTERIOR
BUREAU OF LAND MANAGEMENTFORM APPROVED
OMB NO. 1004-0135
Expires: November 30, 2000**SUNDRY NOTICES AND REPORTS ON WELLS**
Do not use this form for proposals to drill or to re-enter an abandoned well. Use form 3160-3 (APD) for such proposals.5. Lease Serial No.
NM-21465

6. If Indian, Allottee or Tribe Name

SUBMIT IN TRIPLICATE - Other instructions on reverse side.

7. If Unit or CA/Agreement, Name and/or No.

1. Type of Well

☐ Oil Well ☐ Gas Well ☒ Other: COAL BED METHANE8. Well Name and No.
CENTENNIAL COM 2

2. Name of Operator

DUGAN PRODUCTION CORP.

Contact: KURT FAGRELIUS

E-Mail: kfagrelus@duganproduction.com

9. API Well No.
30-045-30721

3a. Address

709 EAST MURRAY DRIVE
FARMINGTON, NM 87401

3b. Phone No. (include area code)

Ph: 505.325.1821

Fx: 505.327.4613

10. Field and Pool, or Exploratory
TWIN MOUNDS FR SAND PC

4. Location of Well (Footage, Sec., T., R., M., or Survey Description)

Sec 24 T30N R15W SENW 1515FNL 1395FWL
36.48100 N Lat, 108.22200 W Lon

11. County or Parish, and State

SAN JUAN COUNTY, NM

12. CHECK APPROPRIATE BOX(ES) TO INDICATE NATURE OF NOTICE, REPORT, OR OTHER DATA

TYPE OF SUBMISSION

TYPE OF ACTION

☒ Notice of Intent☐ Subsequent Report☐ Final Abandonment Notice☐ Acidize☐ Alter Casing☐ Casing Repair☐ Change Plans☐ Convert to Injection☐ Deepen☐ Fracture Treat☐ New Construction☐ Plug and Abandon☐ Plug Back☐ Production (Start/Resume)☐ Reclamation☐ Recomplete☐ Temporarily Abandon☐ Water Disposal☐ Water Shut-Off☐ Well Integrity☒ Other
Change to Original A
PD

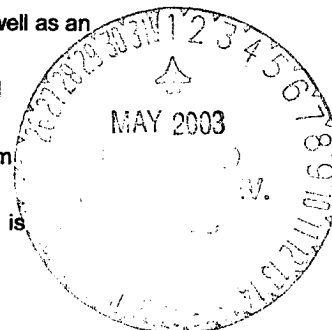
13. Describe Proposed or Completed Operation (clearly state all pertinent details, including estimated starting date of any proposed work and approximate duration thereof. If the proposal is to deepen directionally or recompleat horizontally, give subsurface locations and measured and true vertical depths of all pertinent markers and zones. Attach the Bond under which the work will be performed or provide the Bond No. on file with BLM/BIA. Required subsequent reports shall be filed within 30 days following completion of the involved operations. If the operation results in a multiple completion or recompleat in a new interval, a Form 3160-4 shall be filed once testing has been completed. Final Abandonment Notices shall be filed only after all requirements, including reclamation, have been completed, and the operator has determined that the site is ready for final inspection.)

Amend APD submitted 7/6/2001 and approved 12/20/2002 by requesting approval to complete well as an infill Basin Fruitland Coal well and commingle production with the Twin Mounds FR Sand PC.

The Pictured Cliffs Sandstone will be completed from approximately 816' - 826' and the Fruitland Coal will be completed from approximately 790' - 805'. The intervals will be fracture stimulated.

To reflect the infill and commingle status of the well, the name will be changed to Centennial Com #91-S.

A revised C-102 showing the N/2 dedication and location of the parent well, Centennial Com #91 is enclosed.



14. I hereby certify that the foregoing is true and correct.

Name (Printed/Typed) KURT FAGRELIUS

Title GEOLOGIST

Signature

Date 04/09/2003

THIS SPACE FOR FEDERAL OR STATE OFFICE USE

Approved By

Title

Date

APR 30 2003

Conditions of approval, if any, are attached. Approval of this notice does not warrant or certify that the applicant holds legal or equitable title to those rights in the subject lease which would entitle the applicant to conduct operations thereon.

Office

Title 18 U.S.C. Section 1001 and Title 43 U.S.C. Section 1212, make it a crime for any person knowingly and willfully to make to any department or agency of the United States any false, fictitious or fraudulent statements or representations as to any matter within its jurisdiction.

NMOC

District I
PO Box 1980, Hobbs, NM 88241-1980

District II
PO Drawer 00, Artesia, NM 88211-0719

District III
1000 Rio Brazos Rd., Aztec, NM 87410

District IV
PO Box 2088, Santa Fe, NM 87504-2088

State of New Mexico
Energy, Minerals & Natural Resources Department

OIL CONSERVATION DIVISION
PO Box 2088
Santa Fe, NM 87504-2088

Form C-102
Revised February 21, 1994
Instructions on back
Submit to Appropriate District Office
State Lease - 4 Copies
Fee Lease - 3 Copies

☐ AMENDED REPORT

WELL LOCATION AND ACREAGE DEDICATION PLAT

*API Number		*Pool Code 86620 / 71629	*Pool Name Twin Mounds ER Sand PC/Basin Fruitland Coal
*Property Code	*Property Name CENTENNIAL COM		*Well Number 91S
*OGRID No. 006515	*Operator Name DUGAN PRODUCTION CORPORATION		*Elevation 5349'

¹⁰ Surface Location

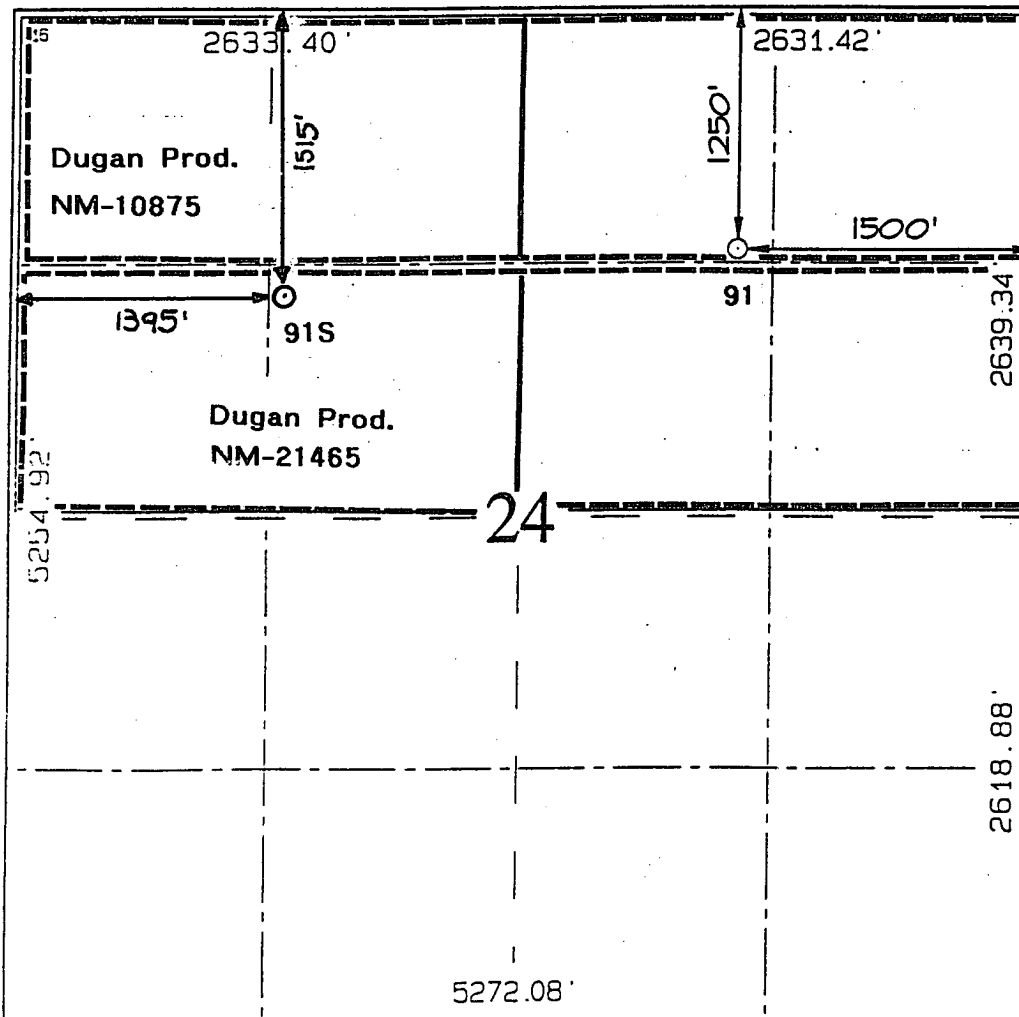
UL or lot no. F	Section 24	Township 30N	Range 15W	Lot Ion	Feet from the 1515'	North/South line NORTH	Feet from the 1395'	East/West line WEST	County SAN JUAN
--------------------	---------------	-----------------	--------------	---------	------------------------	---------------------------	------------------------	------------------------	--------------------

¹¹ Bottom Hole Location If Different From Surface

UL or lot no.	Section	Township	Range	Lot Ion	Feet from the	North/South line	Feet from the	East/West line	County
---------------	---------	----------	-------	---------	---------------	------------------	---------------	----------------	--------

¹² Dedicated Acres 320-ACRES (N/2), 160-ACRES (NW/4)	¹³ Joint or Infill	¹⁴ Consolidation Code	¹⁵ Order No.
--	-------------------------------	----------------------------------	-------------------------

NO ALLOWABLE WILL BE ASSIGNED TO THIS COMPLETION UNTIL ALL INTERESTS HAVE BEEN CONSOLIDATED
OR A NON-STANDARD UNIT HAS BEEN APPROVED BY THE DIVISION



¹⁷ OPERATOR CERTIFICATION

I hereby certify that the information contained herein is true and complete to the best of my knowledge and belief.

Kurt Fagrelus
Signature

Kurt Fagrelus

Printed Name
Geologist

Title

4/8/2003

Date

¹⁸ SURVEYOR CERTIFICATION

I hereby certify that the well location shown on this plat was plotted from field notes of actual surveys made by me or under my supervision, and that the same is true and correct to the best of my belief.

Date of Survey : JUNE 4, 2002

Signature and Seal of Professional Surveyor



Jason C. Edwards
Certificate Number 15269