

Submit 3 Copies To Appropriate District Office
District I
1625 N. French Dr., Hobbs, NM 88240
District II
1301 W. Grand Ave., Artesia, NM 88210
District III
1000 Rio Brazos Rd., Aztec, NM 87410
District IV
1220 S. St. Francis Dr., Santa Fe, NM 87505

State of New Mexico
Energy, Minerals and Natural Resources

Form C-103
May 27, 2004

OIL CONSERVATION DIVISION
1220 South St. Francis Dr.
Santa Fe, NM 87505

WELL API NO. 30-045-24184
5. Indicate Type of Lease STATE <input type="checkbox"/> FEE <input type="checkbox"/>
6. State Oil & Gas Lease No.
7. Lease Name or Unit Agreement Name Florance C
8. Well Number 8M
9. OGRID Number 000778
10. Pool name or Wildcat Blanco Mesaverde/Otero Chacra

SUNDRY NOTICES AND REPORTS ON WELLS (DO NOT USE THIS FORM FOR PROPOSALS TO DRILL OR TO DEEPEN OR PLUG BACK TO DIFFERENT RESERVOIR. USE "APPLICATION FOR PERMIT" (FORM C-101) FOR SUCH PROPOSALS.)	
1. Type of Well: Oil Well <input checked="" type="checkbox"/> Gas Well <input type="checkbox"/> Other <input type="checkbox"/>	
2. Name of Operator BP America Production Company - Attn: Mary Corley	
3. Address of Operator P.O. Box 3092 Houston, TX 77253	
4. Well Location Unit Letter <u>E</u> : <u>1545</u> feet from the <u>North</u> line and <u>970'</u> feet from the <u>West</u> line Section <u>19</u> Township <u>28N</u> Range <u>08W</u> NMPM <u>San Juan</u> County	
11. Elevation (Show whether DR, RKB, RT, GR, etc.) 5771' GR	
Pit or Below-grade Tank Application <input type="checkbox"/> or Closure <input type="checkbox"/>	
Pit type <u>Workover</u> Depth to Groundwater <u>>100'</u> Distance from nearest fresh water well <u>>1000'</u> Distance from nearest surface water <u>>1000'</u>	
Pit Liner Thickness: <u>12</u> mil Below-Grade Tank: Volume _____ bbls; Construction Material _____	

12. Check Appropriate Box to Indicate Nature of Notice, Report or Other Data

NOTICE OF INTENTION TO:

PERFORM REMEDIAL WORK ☐ PLUG AND ABANDON ☐
TEMPORARILY ABANDON ☐ CHANGE PLANS ☐
PULL OR ALTER CASING ☐ MULTIPLE COMPL ☐

SUBSEQUENT REPORT OF:

REMEDIAL WORK ☐ ALTERING CASING ☐
COMMENCE DRILLING OPNS. ☐ P AND A ☐
CASING/CEMENT JOB ☐

OTHER: **Complete into Chacra & DHC w/Mesaverde**

OTHER: ☐

13. Describe proposed or completed operations. (Clearly state all pertinent details, and give pertinent dates, including estimated date of starting any proposed work). SEE RULE 1103. For Multiple Completions: Attach wellbore diagram of proposed completion or recompletion.

BP America Production Company request permission to recomplete the subject well into the Otero Chacra Pool and commingle production Downhole with the existing Blanco Mesaverde as per the attached procedure. The Blanco Mesaverde (72319) and Otero Chacra (82329) Pools are Pre-Approved Pools for Downhole Commingling per NMOC order R-11363. The working and overriding royalty interest owners in the proposed commingled pools are identical, therefore no additional notification is required. BLM has been notified via FORM 3160-5. Production is proposed to be allocated based on the subtraction method using the projected future decline for production from the Mesaverde. That production shall serve as a base for production subtracted from the total production for the commingled well. The balance of the production will be attributed to the Chacra. Attached is the future production decline estimates for the Mesaverde. Commingling Production Downhole in the subject well from the proposed Pools with not reduce the value of the total remaining production

Construct a lined workover pit per BP America – San Juan Basin Drilling/ Workover Pit Construction Plan issued date of 04/15/2004. Pit will be closed according to closure plan on file.

DHC 1754AZ

I hereby certify that the information above is true and complete to the best of my knowledge and belief. I further certify that any pit or below-grade tank has been/will be constructed or closed according to NMOC guidelines ☐ a general permit ☐ or an (attached) alternative OCD-approved plan ☐.

SIGNATURE Mary Corley TITLE Sr. Regulatory Analyst DATE 01/10/2005
Type or print name Mary Corley E-mail address: corleyml@bp.com Telephone No. 281-366-4491
For State Use Only
APPROVED BY: [Signature] TITLE DEPUTY OIL & GAS INSPECTOR, DIST. NO. 40 DATE JAN 18 2005
Conditions of Approval (if any):

District I
1625 N. French Dr., Hobbs, NM 88240
District II
811 South First, Artesia, NM 88210
District III
1000 Rio Brazos Rd., Aztec, NM 87410
District IV
2040 South Pacheco, Santa Fe, NM 87505

State of New Mexico
Energy, Minerals & Natural Resources Department
OIL CONSERVATION DIVISION
2040 South Pacheco
Santa Fe, NM 87505

Form C-102
Revised August 15, 2000
Submit to Appropriate District Office
State Lease - 4 Copies
Fee Lease - 3 Copies

☐ AMENDED REPORT

WELL LOCATION AND ACREAGE DEDICATION PLAT

¹ API Number 30-045-24184	² Pool Code 82329	³ Pool Name Otero Chacra
⁴ Property Code 000526	⁵ Property Name Florance c	⁶ Well Number 8M
⁷ OGRID No. 000778	⁸ Operator Name BP America Production Company	⁹ Elevation

¹⁰ Surface Location

UL or lot no. Unit E	Section 19	Township 28N	Range 08W	Lot Idn	Feet from 1545	North/South North	Feet from 970	East/West West	County San Juan
--------------------------------	----------------------	------------------------	---------------------	---------	--------------------------	-----------------------------	-------------------------	--------------------------	---------------------------

¹¹ Bottom Hole Location If Different From Surface

UL or lot no.	Section	Township	Range	Lot Idn	Feet from	North/South	Feet	East/West	County
---------------	---------	----------	-------	---------	-----------	-------------	------	-----------	--------

¹² Dedicated Acres 160	¹³ Joint or Infill	¹⁴ Consolidation Code	¹⁵ Order No.
---	-------------------------------	----------------------------------	-------------------------

NO ALLOWABLE WILL BE ASSIGNED TO THIS COMPLETION UNTIL ALL INTERESTS HAVE BEEN CONSOLIDATED OR A NON-STANDARD UNIT HAS BEEN APPROVED BY THE DIVISION

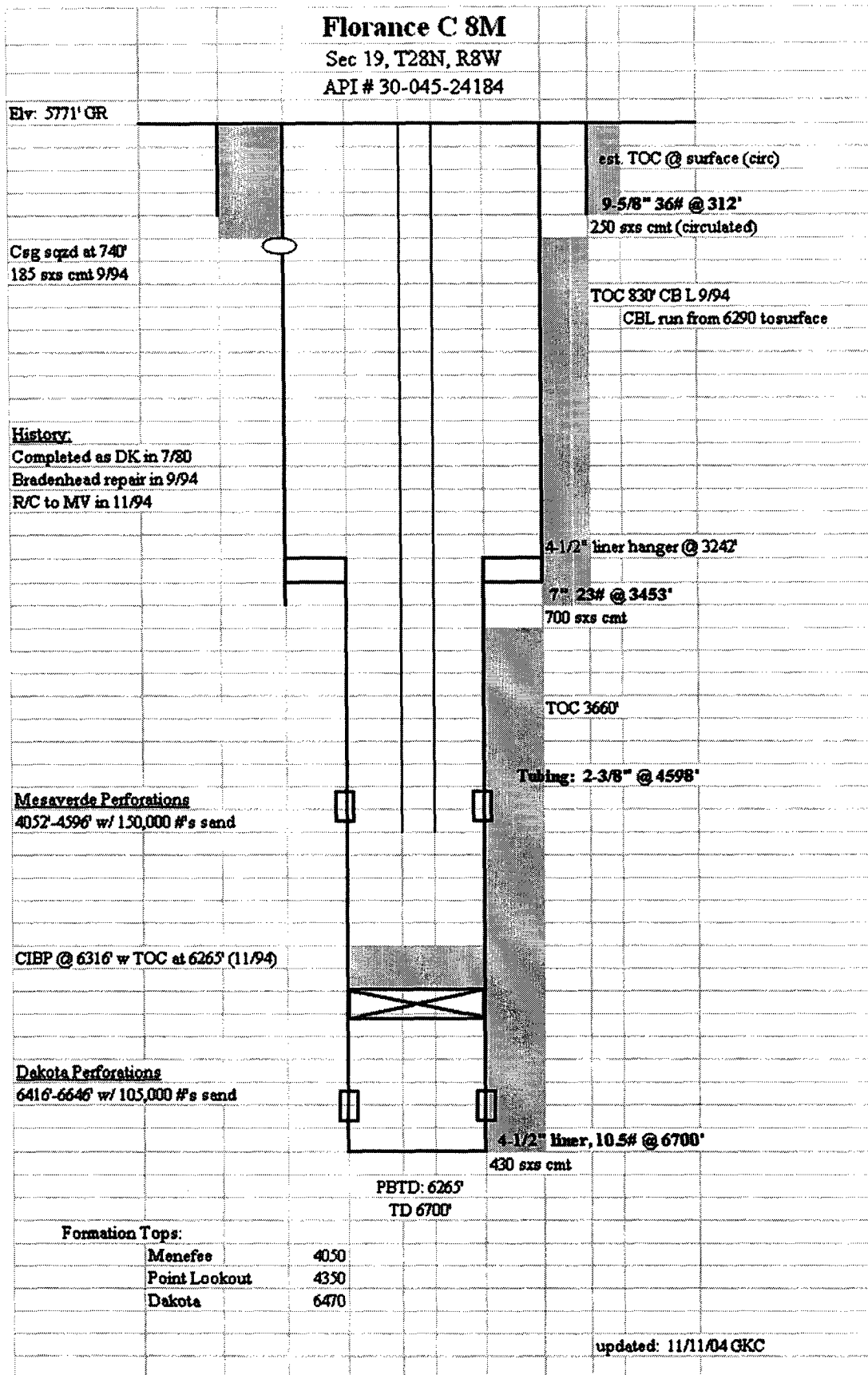
		¹⁷ OPERATOR CERTIFICATION I hereby certify that the information contained herein is true and complete to the best of my knowledge and belief. Signature Mary Corley Printed Name Sr. Regulatory Analyst Title 01/10/2005 Date
		¹⁸ SURVEYOR CERTIFICATION I hereby certify that the well location shown on this plat was plotted from field notes of actual surveys made by me or under my supervision, and that the same is true and correct to the best of my belief. 8/31/1979 Date of Survey Signature and Seal of Professional Surveyor: Fred B Kerr 3950 Certificate Number

Florance C 8M
API #: 30-045-24184
Complete into the Chacra & Downhole Commingle with Mesaverde
January 4, 2004

Procedure:

1. Perform pre-rig site inspection. If earth pit is required have One Call made 48 hours prior to digging.
2. RU slickline unit or wireline unit. Pressure test lubricator and equipment. RIH and set barriers for isolation in tubing string.
3. Check and record tubing, casing, and bradenhead pressures.
4. MIRU workover rig.
5. Blow down well. Kill with 2% KCL water ONLY if necessary.
6. Nipple down Wellhead. NU BOPs and diversion spool with 3" outlets and 3" pipe to the blow tank. Pressure test BOPs to 200 psi above BHP. Monitor flowing casing pressure with gauge (with casing flowing to blow tank) throughout workover.
7. TOH with 2-3/8" production tubing currently set at 4598'.
8. TIH with bit and scraper for 7" casing to the top of the liner at 3242', POOH.
9. TIH with bit and scraper for 4-1/2" casing to 200' below the bottom MV perforation. POOH.
10. RU E-line unit pressure test lines and equipment. Log Chacra interval for depth control to tie-in to for perforating. POOH.
11. RIH with retrievable plug for 7" casing. Set retrievable plug just above liner hanger at 3242'. This plug is to protect the liner hanger from the frac pressure.
12. Load well with 2% KCl. POOH. RIH with test packer to depth just below PC formation. Pressure test casing to 1800 psi with rig pumps. POOH with test packer.
13. RIH with 3-1/8" casing guns w/lubricator. Perforate Chacra formation (correlate to GR log run in step 13). 200' gross, 15 spots @ 4 SPF=60 holes. The only log to pick perfs from was a CBL log: 3220, 3216, 3211, 3204, 3199, 3191, 3187, 3137, 3123, 3113, 3107, 3104, 3083, 3079, 3073'. Perfs subject to changed based on log run in step 9.
14. RIH with 3-1/2" frac string.
15. NU Frac Isolation equipment, Spearhead 500 gal 15% HCL, establish injection rate, and proceed with fracture stimulation according to Schlumberger schedule. Flush frac with foam.
16. Flowback frac immediately.
17. ND Frac isolation equipment.

18. Cleanout fill to top of plug. **Perform well test on Chacra for regulatory and document well test in DIMS.** Then finish cleanout fill and retrieve plug set at liner top. Cleanout fill to 200' below lowest MV perforation.
19. RIH with 2-3/8" production.
20. Land 2-3/8" production tubing at +/- 4598'.
21. ND BOP's. NU Wellhead. Pressure test Wellhead.
22. RU WL unit. Run gauge ring for 2-3/8" tubing. Pull plugs and set tubing stop for plunger. Communicate plunger equipment status to IC room personnel.
23. RD slickline unit.
24. Test well for air. Return well to production and downhole co-mingle Chacra, and Mesaverde. RD and release all equipment.



Florance C 8M Future Production Decline Estimate **Mesaverde Daily Rates**

$$\ln(Qf/Qi) = -dt$$

$$Qf = 74$$

$$Qi = 79$$

$$rate = 74$$

$$time = 7$$

$$dt = -0.065382759$$

$$decline = -0.009340394$$

Month	Gas Volume
Jan-2003	0
Feb-2003	123
Mar-2003	106
Apr-2003	82
May-2003	88
Jun-2003	68
Jul-2003	57
Aug-2003	73
Sep-2003	91
Oct-2003	77
Nov-2003	69
Dec-2003	82
Jan-2004	75
Feb-2004	79
Mar-2004	69
Apr-2004	63
May-2004	68
Jun-2004	33
Jul-2004	89
Aug-2004	74
Sep-2004	88
Oct-2004	84
Nov-2004	84
Dec-2004	83
Jan-2005	82
Feb-2005	81
Mar-2005	80
Apr-2005	80
May-2005	79
Jun-2005	78
Jul-2005	78
Aug-2005	77
Sep-2005	76
Oct-2005	75
Nov-2005	75
Dec-2005	74

Month	Gas Volume
Jan-2006	73
Feb-2006	73
Mar-2006	72
Apr-2006	71
May-2006	71
Jun-2006	70
Jul-2006	69
Aug-2006	69
Sep-2006	68
Oct-2006	67
Nov-2006	67
Dec-2006	66
Jan-2007	66
Feb-2007	65
Mar-2007	64
Apr-2007	64
May-2007	63
Jun-2007	63
Jul-2007	62
Aug-2007	61
Sep-2007	61
Oct-2007	60
Nov-2007	60
Dec-2007	59
Jan-2008	59
Feb-2008	58
Mar-2008	57
Apr-2008	57
May-2008	56
Jun-2008	56
Jul-2008	55
Aug-2008	55
Sep-2008	55
Oct-2008	54
Nov-2008	54
Dec-2008	53
Jan-2009	53

Month	Gas Volume
Feb-2009	52
Mar-2009	52
Apr-2009	51
May-2009	51
Jun-2009	50
Jul-2009	50
Aug-2009	50
Sep-2009	49
Oct-2009	49
Nov-2009	48
Dec-2009	48
Jan-2010	47
Feb-2010	47
Mar-2010	46
Apr-2010	46
May-2010	46
Jun-2010	45
Jul-2010	45
Aug-2010	44
Sep-2010	44
Oct-2010	43
Nov-2010	43
Dec-2010	43
Jan-2011	42
Feb-2011	42
Mar-2011	41
Apr-2011	41
May-2011	41
Jun-2011	40
Jul-2011	40
Aug-2011	40
Sep-2011	39
Oct-2011	39
Nov-2011	38
Dec-2011	38
Jan-2012	38

Florance C 8M Future Production Decline Estimate **Mesaverde Daily Rates**

Month	Gas Volume
Feb-2012	37
Mar-2012	37
Apr-2012	37
May-2012	36
Jun-2012	36
Jul-2012	36
Aug-2012	35
Sep-2012	35
Oct-2012	35
Nov-2012	34
Dec-2012	34
Jan-2013	34
Feb-2013	33
Mar-2013	33
Apr-2013	33
May-2013	33
Jun-2013	32
Jul-2013	32
Aug-2013	32
Sep-2013	31
Oct-2013	31
Nov-2013	31
Dec-2013	30
Jan-2014	30
Feb-2014	30
Mar-2014	30
Apr-2014	29
May-2014	29
Jun-2014	29
Jul-2014	29
Aug-2014	28
Sep-2014	28
Oct-2014	28
Nov-2014	27
Dec-2014	27
Jan-2015	27

Month	Gas Volume
Feb-2015	27
Mar-2015	26
Apr-2015	26
May-2015	26
Jun-2015	26
Jul-2015	26
Aug-2015	25
Sep-2015	25
Oct-2015	25
Nov-2015	25
Dec-2015	24
Jan-2016	24
Feb-2016	24
Mar-2016	24
Apr-2016	23
May-2016	23
Jun-2016	23
Jul-2016	23
Aug-2016	23
Sep-2016	22
Oct-2016	22
Nov-2016	22
Dec-2016	22
Jan-2017	22
Feb-2017	21
Mar-2017	21
Apr-2017	21
May-2017	21
Jun-2017	21
Jul-2017	20
Aug-2017	20
Sep-2017	20
Oct-2017	20
Nov-2017	20
Dec-2017	19
Jan-2018	19