

State of New Mexico
Energy, Minerals & Natural Resources

Form C-101
Revised March 17, 1999

District I
1625 N. French Dr., Hobbs, NM 88240
District II
811 S. 1st Street, Artesia, NM 88210
District III
1000 Rio Brazos Rd., Aztec, NM 87410
District IV
2040 South Pacheco, Santa Fe, NM 87505

Oil Conservation Division
2040 South Pacheco
Santa Fe, NM 87505

Submit to appropriate District Office
State Lease - 6 Copies
Fee Lease - 5 Copies

☐ AMENDED REPORT

APPLICATION FOR PERMIT TO DRILL, RE-ENTER, DEEPEN, PLUGBACK, OR ADD A ZONE

¹ Operator Name and Address Energen Resources Corporation 2198 Bloomfield Highway Farmington, New Mexico 87401		² OGRID Number 162928
⁴ Property Code 21197	⁵ Property Name CULPEPPER MARTIN	³ API Number 30-045-31278
		⁶ Well No. 10S

⁷ Surface Location									
UL or lot no.	Section	Township	Range	Lot. Idn	Feet from the	North/South Line	Feet from the	East/West line	County
D	7	31N	12W		1120	NORTH	735	WEST	SAN JUAN

⁸ Proposed Bottom Hole Location If Different From Surface									
UL or lot no.	Section	Township	Range	Lot. Idn	Feet from the	North/South Line	Feet from the	East/West line	County

⁹ Proposed Pool 1 BASIN FRUITLAND COAL	¹⁰ Proposed Pool 2
--	-------------------------------

¹¹ Work Type Code DRILL	¹² Well Type Code GAS WELL	¹³ Cable/Rotary ROTARY	¹⁴ Lease Type Code FEE	¹⁵ Ground Level Elevation 5817'
¹⁶ Multiple NO	¹⁷ Proposed Depth 2189'	¹⁸ Formation FRUITLAND COAL	¹⁹ Contractor	²⁰ Spud Date 2/03

²¹ Proposed Casing and Cement Program					
Hole Size	Casing Size	Casing weight/foot	Setting Depth	Sacks of Cement	Estimated TOC
12-1/4"	9-5/8"	32.30#	200'	110	CIRC. TO SURFACE
7-7/8"	5-1/2"	15.5#	2189'	340	CIRC. TO SURFACE

²² Describe the proposed program. If this application is to DEEPEN or PLUG BACK, give the data on the present productive zone and proposed new productive zone.
Describe the blowout prevention program, if any. Use additional sheets if necessary.
An 11" 2000# minimum double gate BOP stack will be used with a 2" 2000# choke manifold.
The Mesavade will be slectively perforated and sand water fractured.
This gas is dedicated.

²³ I hereby certify that the information given above is true and complete to the best of my knowledge and belief.		OIL CONSERVATION DIVISION	
Signature: <i>Doug Thomas</i>		Approved by: <i>[Signature]</i>	
Printed name: Doug Thomas		Title: DEPUTY OIL & GAS INSPECTOR, DIST. IV	
Title: Drilling/Completion Foreman		Approval Date: DEC - 4 2002	Expiration Date: DEC - 4 2003
Date: 11/27/02	Phone: 505-325-6800	Conditions of Approval:	
		Attached <input type="checkbox"/>	

District I
PO Box 1980, Hobbs, NM 88241-1980

District II
PO Drawer DD, Artesia, NM 88211-0719

District III
1000 Rio Brazos Rd., Aztec, NM 87410

District IV
PO Box 2088, Santa Fe, NM 87504-2088

State of New Mexico
Energy, Minerals & Natural Resources Department

OIL CONSERVATION DIVISION
PO Box 2088
Santa Fe, NM 87504-2088

Form C-102
Revised February 21, 1994
Instructions on back
Submit to Appropriate District Office
State Lease - 4 Copies
Fee Lease - 3 Copies

☐ AMENDED REPORT

WELL LOCATION AND ACREAGE DEDICATION PLAT

¹ API Number 30-045-31278	² Pool Code 71629	³ Pool Name Basin Fruitland Coal
⁴ Property Code 21197	⁵ Property Name CULPEPPER MARTIN	⁶ Well Number 10S
⁷ GRID No. 162928	⁸ Operator Name ENERGEN RESOURCES CORPORATION	⁹ Elevation 5817'

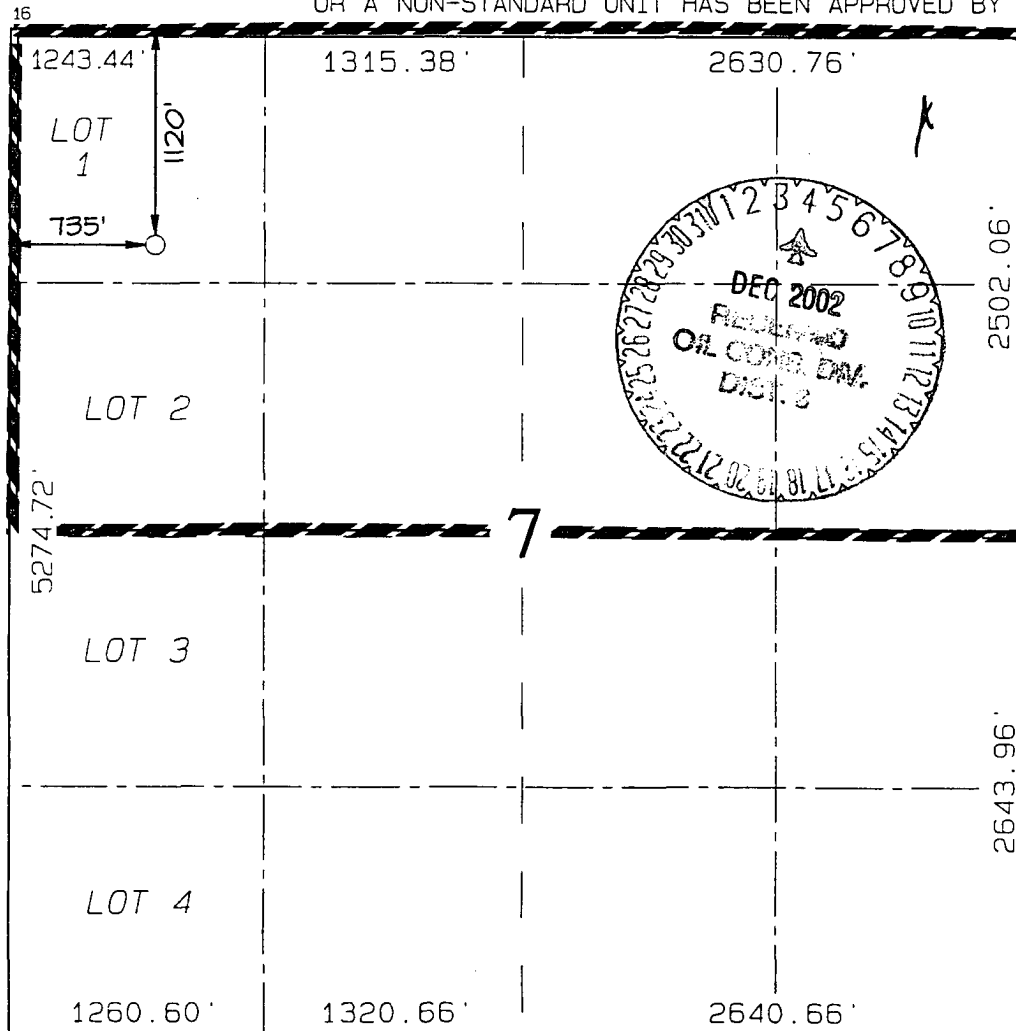
¹⁰ Surface Location

UL or lot no.	Section	Township	Range	Lot Idn	Feet from the	North/South line	Feet from the	East/West line	County
D	7	31N	12W		1120	NORTH	735	WEST	SAN JUAN

¹¹ Bottom Hole Location If Different From Surface

UL or lot no.	Section	Township	Range	Lot Idn	Feet from the	North/South line	Feet from the	East/West line	County
¹² Dedicated Acres 315.83 Acres - (N/2)					¹³ Joint or Infill	¹⁴ Consolidation Code	¹⁵ Order No.		

NO ALLOWABLE WILL BE ASSIGNED TO THIS COMPLETION UNTIL ALL INTERESTS HAVE BEEN CONSOLIDATED OR A NON-STANDARD UNIT HAS BEEN APPROVED BY THE DIVISION



¹⁷ OPERATOR CERTIFICATION

I hereby certify that the information contained herein is true and complete to the best of my knowledge and belief

Signature
Don Graham
Printed Name
Production Superintendent
Title

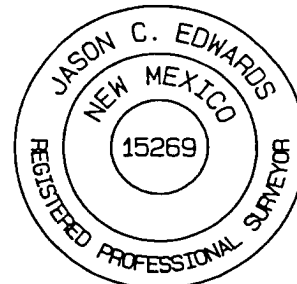
Date

¹⁸ SURVEYOR CERTIFICATION

I hereby certify that the well location shown on this plat was plotted from field notes of actual surveys made by me or under my supervision, and that the same is true and correct to the best of my belief.

Survey Date: **OCTOBER 17, 2002**

Signature and Seal of Professional Surveyor



JASON C. EDWARDS
Certificate Number **15269**

ENERGEN RESOURCES CORPORATION CULPEPPER MARTIN #105

1120' FNL & 735' FWL, SECTION 7, T31N, R12W, N.M.P.M.
SAN JUAN COUNTY, NEW MEXICO

