

UNITED STATES  
DEPARTMENT OF THE INTERIOR  
BUREAU OF LAND MANAGEMENT

FORM APPROVED  
OMB NO. 1004-0136  
Expires: November 30, 2000

APPLICATION FOR PERMIT TO DRILL OR REENTER

1a. Type of Work  DRILL  REENTER  
1b. Type of Well  Oil Well  Gas Well  Other  Single Zone  Multiple Zone

2. Name of Operator  
Energen Resources Corporation

3a. Address 2198 Bloomfield Highway, Farmington, NM 87401  
3b. Phone No. (include area code) 505-325-6800

4. Location of Well (Report location clearly and in accordance with any State requirements)\*  
At surface 2010' FSL, 1600' FWL  
At proposed prod. zone

4. Distance in miles and direction from nearest town or post office\*  
13 miles northwest of Lindrieth New Mexico

15. Distance from proposed\* location to nearest property or lease line, ft. (Also to nearest drg. unit line, if any) 1600'  
16. No. of Acres in lease 2560'

18. Distance from proposed location\* to nearest well, drilling, completed, applied for, on this lease, ft. 1400'  
19. Proposed Depth 6324'

21. Elevations (Show whether DF, KDB, RT, GL, etc.) 7287' GL  
22. Approximate date work will start\* September 2003

5. Lease Serial No.  
Jicarilla Contract 99

6. If Indian, Allottee or Tribe Name  
Jicarilla Apache

7. Unit or CA Agreement Name and No.  
21941

8. Lease Name and Well No.  
Jicarilla 99 7C

9. APL Well No.  
30-039-27437

10. Field and Pool, or Exploratory  
Blanco Mesaverde

11. Sec., T., R., M., or Blk. and Survey or Area  
X Sec. 13, T26N, R03W, N.M.P.M.

12. County or Parish Rio Arriba  
13. State NM

17. Spacing Unit dedicated to this well  
W 1/2

20. BLM/BIA Bond No. on file

23. Estimated duration  
14 days

24. Attachments

The following, completed in accordance with the requirements of Onshore Oil and Gas Order No. 1, shall be attached to this form:

- Well plat certified by a registered surveyor.
- A Drilling Plan
- A Surface Use Plan (if the location is on National Forest System Lands, the SUPO shall be filed with the appropriate Forest Service Office).
- Bond to cover the operations unless covered by an existing bond on file (see Item 20 above).
- Operator certification.
- Such other site specific information and/or plans as may be required by the authorized officer.

25. Signature *Vicki Donaghey* Name (Printed/Typed) Vicki Donaghey Date 09/18/02  
Title Production Assistant

Approved by (Signautre) (ORIG. SGN.) RICHARD W. WILSON Name (Printed/Typed) Assistant Field Manager Date MAY 16 2003  
Title Office

Application approval does not warrant or certify that the applicant holds legal or equitable title to those rights in the subject lease which would entitle the applicant to conduct operations thereon.  
Conditions of approval, if any, are attached.

Title 18 U.S.C. Section 1001 and Title 43 U.S.C. Section 1212, make it a crime for any person knowingly and willfully to make to any department or agency of the United States any false, fictitious or fraudulent statements or representations as to any matter within its jurisdiction.

\*(Instructions on Reverse)

District II  
PO Drawer 00, Artesia, NM 88211-0719

OIL CONSERVATION DIVISION  
PO Box 2088  
Santa Fe, NM 87504-2088

District III  
1000 Rio Brazos Rd., Aztec, NM 87410

AMENDED REPORT

District IV  
PO Box 2088, Santa Fe, NM 87504-2088

WELL LOCATION AND ACREAGE DEDICATION PLAT

*API Number <b>30-039-27437</b>		*Pool Code 72319	*Pool Name BLANCO MESAVERDE
*Property Code <b>21941</b>	*Property Name JICARILLA 99		*Well Number 7C
*GRID No. 162928	*Operator Name ENERGEN RESOURCES CORPORATION		*Elevation 7287'

<sup>10</sup> Surface Location

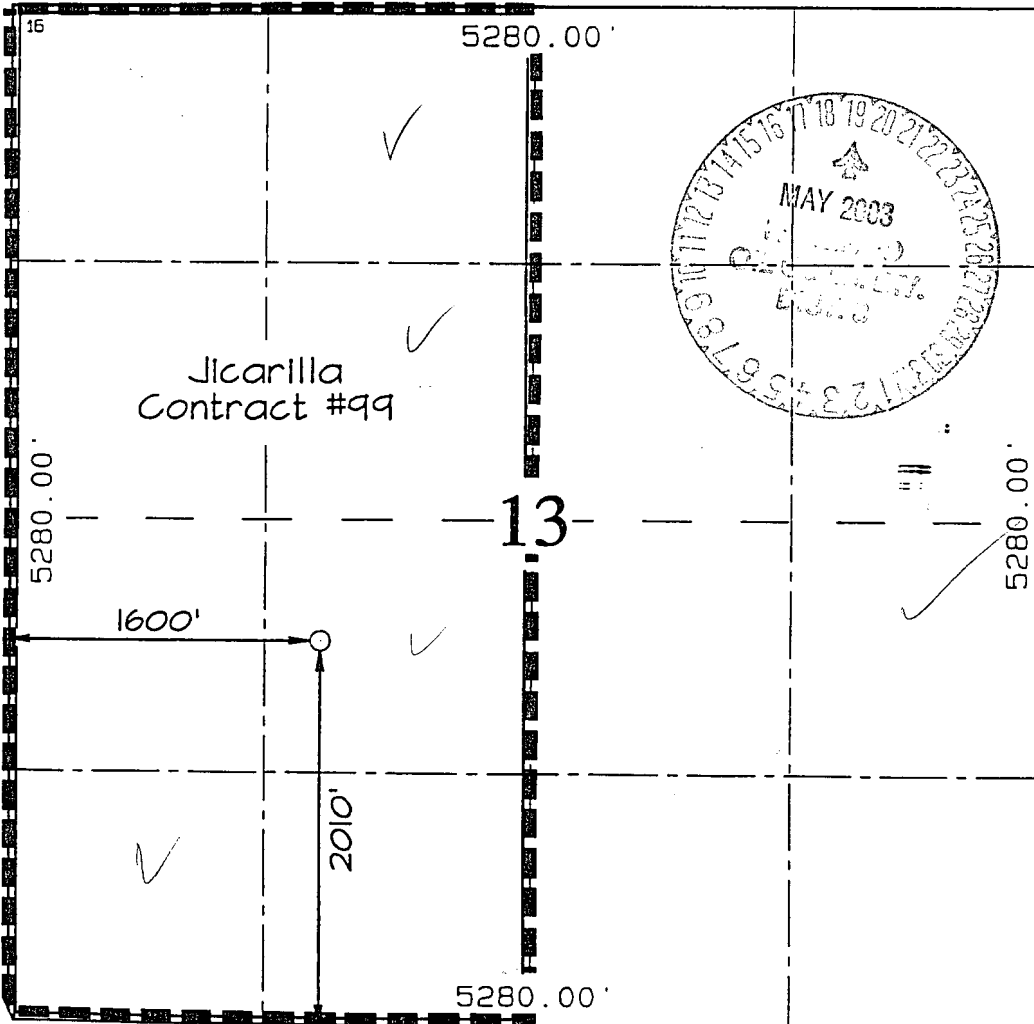
UL or lot no.	Section	Township	Range	Lot Idn	Feet from the	North/South line	Feet from the	East/West line	County
K	13	26N	3W		2010	SOUTH	1600	WEST	RIO ARRIBA

<sup>11</sup> Bottom Hole Location If Different From Surface

UL or lot no.	Section	Township	Range	Lot Idn	Feet from the	North/South line	Feet from the	East/West line	County

<sup>12</sup> Dedicated Acres 320.0 Acres - (W/2)	<sup>13</sup> Joint or Infill	<sup>14</sup> Consolidation Code	<sup>15</sup> Order No.
--	-------------------------------	----------------------------------	-------------------------

NO ALLOWABLE WILL BE ASSIGNED TO THIS COMPLETION UNTIL ALL INTERESTS HAVE BEEN CONSOLIDATED OR A NON-STANDARD UNIT HAS BEEN APPROVED BY THE DIVISION



<sup>17</sup> OPERATOR CERTIFICATION

I hereby certify that the information contained herein is true and complete to the best of my knowledge and belief

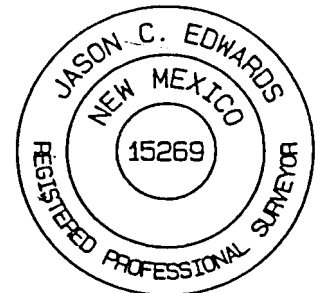
*Don Graham*  
Signature  
Don Graham  
Printed Name  
Production Superintendent  
Title  
9-18-02  
Date

<sup>18</sup> SURVEYOR CERTIFICATION

I hereby certify that the well location shown on this plat was plotted from field notes of actual surveys made by me or under my supervision, and that the same is true and correct to the best of my belief.

Date of Survey: JULY 18, 2002

Signature and Seal of Professional Surveyor



*JASON C. EDWARDS*  
Certificate Number 15269

## OPERATIONS PLAN

WELL NAME: Jicarilla 99 #7C

LOCATION: 2010' FSL, 1600' FWL, Section 13, T26N, R3W, Rio Arriba, New Mexico

FIELD: Blanco Mesaverde

ELEVATION: 7287'

### FORMATION TOPS:

Surface	San Jose	Huerfanito Benonite	4229
Nacimiento	2314 - 1530'	Cliff House	5484
Ojo Alamo	3349	Menefee	5549
Kirtland	3544	Point Lookout	5874
Fruitland	3584	Mancos Shale	6134
Pictured Cliffs	3739		
Lewis	3909		
		<b>Total Depth</b>	<b>6324</b>

### LOGGING PROGRAM:

Open Hole Logs:

Surface to intermediate: NONE

Inter TD to total depth: Temp/HRI/CNT, LDT/GR

Mud Logs: 3600' to total depth

Coring: None

Natural Gauges: Every 500' from intermediate TD to total depth

MUD PROGRAM: Fresh water low solids mud from surface to intermediate TD (9.0 – 9.2 PPG).  
Air/mist from intermediate casing point to total depth.

### CASING PROGRAM:

<u>HOLE SIZE</u>	<u>DEPTH</u>	<u>CSG SIZE</u>	<u>WT.</u>	<u>GRADE</u>
12-1/4"	200'	9-5/8"	36#	J-55
8-3/4"	4109'	7"	20#	J-55
6-1/4"	3959'-6324'	4-1/2"	10.5#	J-55

### TUBING PROGRAM:

6250'	2 3/8	4.7#	J-55
-------	-------	------	------

WELLHEAD: 11" 3000 x 9 5/8" casing head. 11" 3000 x 7 1/16" 3000 xmas tree.

### BOP SPECIFICATIONS:

An 11" 2000 psi minimum double gate BOP stack (Figure 1) will be used following nipple up of casing head. During air drilling operations, a Shaffer Type 50 or equivalent rotating head will be installed on top of the stack. A 2" nominal, 2000 psi minimum choke manifold will be used. An upper Kelly Cock valve with handle available and drill string valve to fit each drill string will be available on the rig floor during drilling operations.

### CEMENTING:

9 5/8 surface casing - Cement with 110 sxs Class B Cement with 1/4" Flocele/sx and 2% calcium chloride (130 cu. ft. of slurry, 100% excess to circulate to surface). WOC 12 hrs. Test casing to 600# for 30 minutes.

Texas Pattern Guide Shoe on bottom with centralizers on the first three joints.

7" intermediate casing - cement with 415 sxs 65/35 Class B Poz with 6% gel, 2% calcium chloride, 10% gilsonite, and 1/4# flocele/sk. Tail with 100 sxs Class B w/2% calcium chloride, 10% gilsonite and 1/4# flocele/sk. (927 cu. Ft. of slurry, 50% excess to circulate to surface). WOC 12 hrs. If cement does not circulate, run temperature survey in 8 hrs. to determine TOC. Test casing to 1200 psi for 30 minutes.

Cement nose guide shoe on bottom with a self-fill insert float valve on top of shoe joint. 8 bow spring centralizers spaced every 2nd joint off bottom. Two turbolating centralizers at the base of the Ojo Alamo.

#### 4 1/2 Production Liner

Cement with 290 sxs 50/50 poz with 2% gel, 5 PPS gilsonite, .4% halad - 9 and 1/4# flocele/sk ( 365 cu. Ft., 50% excess to intermediate casing). WOC 18 hrs prior to completion.

Cement nose guide shoe on bottom with float collar on top of shoe joint. Liner hanger will have a neopreme packoff on top.

### OTHER INFORMATION:

- 1) The Blanco Mesaverde and Gallup Dakota will be completed and downhole commingled.
- 2) No abnormal temperatures or pressures are anticipated.
- 3) Anticipated pore pressure for the Gallup is 900, Mesa Verde is 800, Pictured Cliffs is 500 and the Fruitland 400 psi.
- 4) If lost circulation is encountered, sufficient LCM will be added to the mud system to maintain well control.
- 5) This gas is dedicated.