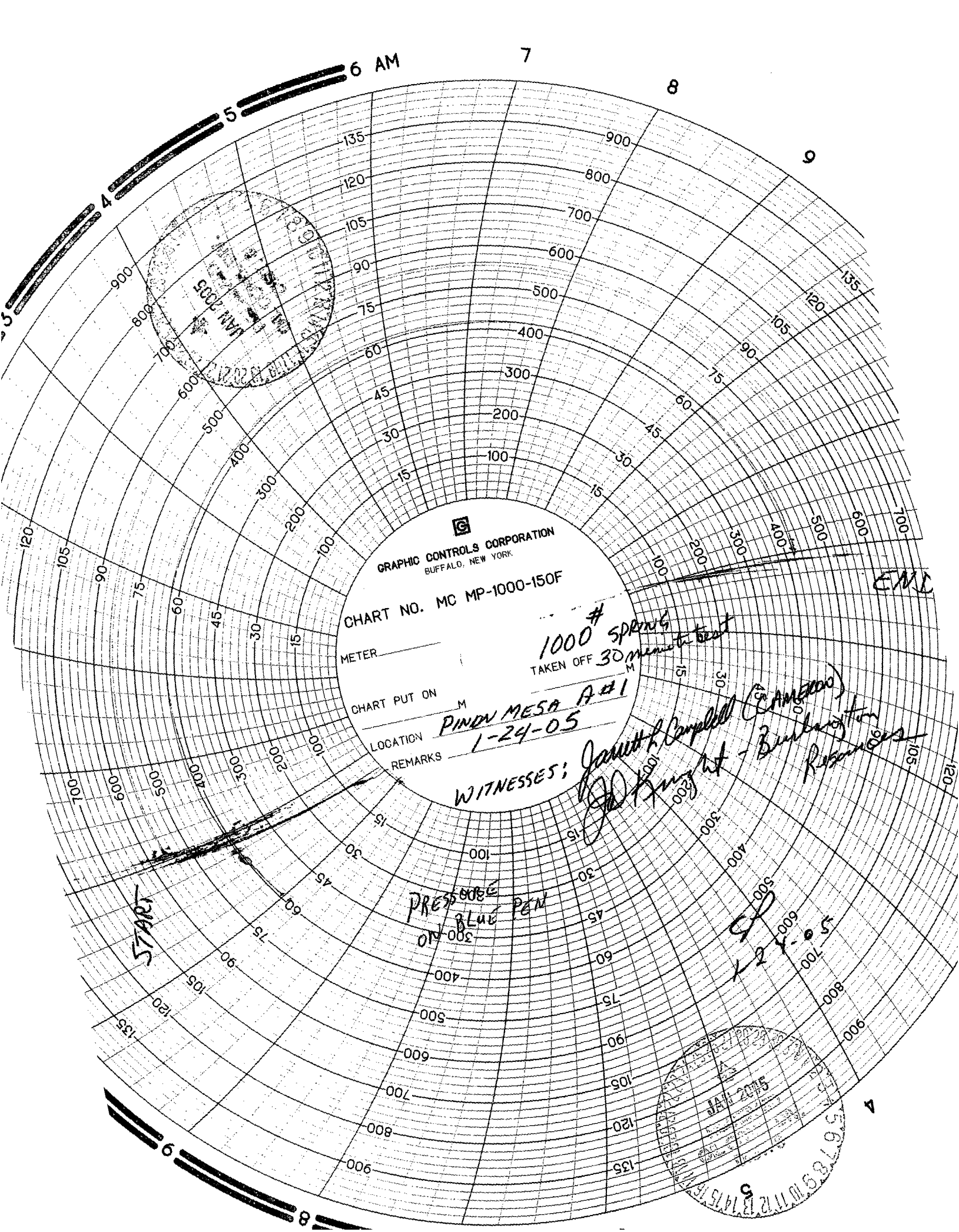


Sundry Notices and Reports on Wells

Title 18 U.S.C. Section 1001, makes it a crime for any person knowingly and willfully to make any department or agency of the United States any false, fictitious or fraudulent statements or representations as to any matter within its jurisdiction.



GRAPHIC CONTROLS CORPORATION
BUFFALO, NEW YORK

CHART NO. MC MP-1000-150F

METER

1000 #
TAKEN OFF 30 minutes test

CHART PUT ON M

PINDY MESA A#1
1-24-05

LOCATION

REMARKS

WITNESSES:

Janet H. Campbell (Camera)
Burlington
Reservoir

PRESSURE
ON BLUE PEN

START

END

JAN 2005

56789



BJ SERVICES

Farmington District Lab

Water Analysis Report

Test # FW05-0014

Customer/Well Information

Company: Burlington Resources
Well Name: Pinon Mesa A #1
Location: 00-000-00000
State: San Juan County, NM
Formation: 0
Depth: ft

Date: 1/11/2005
Prepared for: Julian Carrillo
Submitted by: 0
Prepared by: Roger Calkins
Water Type: Produced

Background Information

Reason for Testing: Routine Sample Analysis
Completion type: N/A
Well History: N/A
Comments:

Sample Characteristics

Sample Temp: 66 (°F)
pH: 8.67
Specific Gravity: 1.000
S.G. (Corrected): 1.001 @ 60 °F
Resistivity (Meas.): 1.40 Ω-m
Viscosity:
Color: cloudy dark gray
Odor: light chemical, cannot ID
Turbidity: minimal
Filtrates: bottom grit particles

Sample Composition

CATIONS

	mg/l	me/l	ppm
Sodium (calc.)	3062	133.2	3062
Calcium	28	1.4	28
Magnesium	53	4.4	53
Barium	0	0.0	0
Potassium	90	2.3	90
Iron	3.00	0.1	3.00

ANIONS

Chloride	1300	36.7	1300
Sulfate	60	1.2	60
Hydroxide	0	0.0	0
Carbonate	< 1	---	---
Bicarbonate	6344	104.0	6344

SUMMARY

Total Dissolved Solids(calc.)	10850		10850
Total Hardness as CaCO3	290	5.8	290

Scaling Tendencies

CaCO3 Factor 178076.1 Calcium Carbonate Scale Probability --> REMOTE
CaSO4 Factor 1684.2 Calcium Sulfate Scale Probability --> REMOTE

Stiff Plot

