

District I
1625 N. French Dr., Hobbs, NM 88240
District II
1301 W. Grand Avenue, Artesia, NM 88210
District III
1000 Rio Brazos Road, Aztec, NM 87410
District IV
1220 S. St. Francis Dr., Santa Fe, NM 87505

State of New Mexico
Energy Minerals and Natural Resources

Form C-144
June 1, 2004

Oil Conservation Division
1220 South St. Francis Dr.
Santa Fe, NM 87505

For drilling and production facilities, submit to appropriate NMOCD District Office.
For downstream facilities, submit to Santa Fe office

Pit or Below-Grade Tank Registration or Closure

Is pit or below-grade tank covered by a "general plan"? Yes ☐ No ☒

Type of action: Registration of a pit or below-grade tank ☐ Closure of a pit or below-grade tank ☒

Operator: Energen Resources Corporation Telephone: 505.325.6800 e-mail address: vdonaghe@energen.com
Address: 2198 Bloomfield Highway - Farmington, NM 87401
Facility or well name: Federal 32-8-26 #2R API #: 30-045-32571 U/L or Qtr/Qtr N Sec 26 T 32N R 08W
County: Sa Juan Latitude 36° 56' 57" Longitude 107° 38' 49" NAD: 1927 X 1983 ☐
Surface Owner: Federal ☒ State ☐ Private ☐ Indian ☐

Pit

Type: Drilling ☒ Production ☐ Disposal ☐

Workover ☐ Emergency ☐

Lined ☒ Unlined ☐

Liner type: Synthetic ☒ Thickness 12 mil Clay ☐

Pit Volume 5000 bbl

Below-grade tank

Volume: bbl Type of fluid:

Construction material:

Double-walled, with leak detection? Yes ☐ If not, explain why not.

Depth to ground water (vertical distance from bottom of pit to seasonal high water elevation of ground water.)	Less than 50 feet	(20 points)	0
	50 feet or more, but less than 100 feet	(10 points)	
	100 feet or more	(0 points)	
Wellhead protection area: (Less than 200 feet from a private domestic water source, or less than 1000 feet from all other water sources.)	Yes	(20 points)	0
	No	(0 points)	
Distance to surface water: (horizontal distance to all wetlands, playas, irrigation canals, ditches, and perennial and ephemeral watercourses.)	Less than 200 feet	(20 points)	0
	200 feet or more, but less than 1000 feet	(10 points)	
	1000 feet or more	(0 points)	
Ranking Score (Total Points)			0

If this is a pit closure: (1) Attach a diagram of the facility showing the pit's relationship to other equipment and tanks. (2) Indicate disposal location: (check the onsite box if you are burying in place) onsite ☒ offsite ☐ If offsite, name of facility . (3) Attach a general description of remedial action taken including remediation start date and end date. (4) Groundwater encountered: No ☒ Yes ☐ If yes, show depth below ground surface ft. and attach sample results. (5) Attach soil sample results and a diagram of sample locations and excavations.

Additional Comments: See cut & fill diagram in APD.

Energen Resources plans to build a lined pit according to "OCD Pit and Below-grade Tank Guidelines", as issued on November 1, 2004. Energen anticipates the submittal of a C-144 for closure of this pit in accordance with BLM and "OCD Pit and Below-grade Tank Guidelines".

I hereby certify that the information above is true and complete to the best of my knowledge and belief. I further certify that the above-described pit or below-grade tank has been/will be constructed or closed according to NMOCD guidelines X, a general permit ☐, or an (attached) alternative OCD-approved plan ☐.

Date: 01/25/05

Printed Name/Title Doug Thomas - Drilling Superintendent

Signature Doug Thomas

Your certification and NMOCD approval of this application/closure does not relieve the operator of liability should the contents of the pit or tank contaminate ground water or otherwise endanger public health or the environment. Nor does it relieve the operator of its responsibility for compliance with any other federal, state, or local laws and/or regulations.

Approval:

Printed Name/Title DEPUTY OIL & GAS INSPECTOR, DIST. 5

Signature Wendy Zent

Date: JAN 28 2005

ENERGEN RESOURCES CORPORATION

FEDERAL 26-2R

660' FSL & 1920 FWL

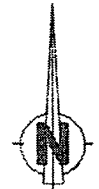
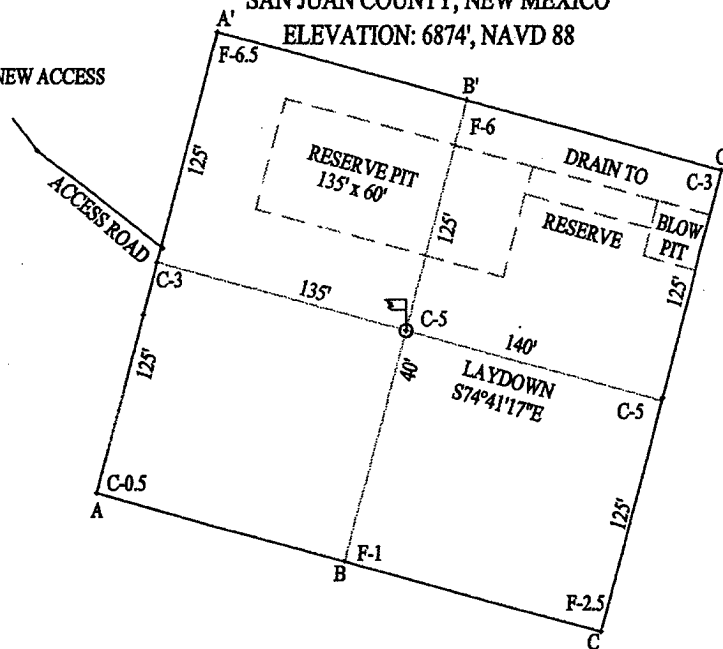
LOCATED IN THE SE/4 SW/4 OF SECTION 26, T32N, R8W, N.M.P.M.,

SAN JUAN COUNTY, NEW MEXICO

ELEVATION: 6874', NAVD 88

920' ± NEW ACCESS

Plat #2



LATITUDE 36°56'57"N
LONGITUDE 107°38'49"W
DATUM: NAD 83

A - A'						
6885						
6875						
6865						

B - B'						
6885						
6875						
6865						

C - C'						
6885						
6875						
6865						