

District I  
PO Box 1980, Hobbs, NM 88241-1980  
District II  
811 South First, Artesia, NM 88210  
District III  
1000 Rio Brazos Rd., Aztec, NM 87410  
District IV  
2040 South Pacheco, Santa Fe, NM 87505

State of New Mexico  
Energy, Minerals & Natural Resources Department

OIL CONSERVATION DIVISION  
2040 South Pacheco  
Santa Fe, NM 87505

Form C-101  
Revised October 18, 1994  
Instructions on back  
Submit to Appropriate District Office  
State Lease - 6 Copies  
Fee Lease - 5 Copies

AMENDED REPORT

APPLICATION FOR PERMIT TO DRILL, RE-ENTER, DEEPEN, PLUGBACK, OR ADD A ZONE

<sup>1</sup> Operator Name and Address. <b>Merrion Oil &amp; Gas Corporation</b> 610 Reilly Avenue Farmington, New Mexico 87401		<sup>2</sup> OGRID Number <b>014634</b>
<sup>4</sup> Property Code <b>24565</b>	<sup>5</sup> Property Name <b>U-Da-Well</b>	<sup>3</sup> API Number <b>30-045-31280</b>
		<sup>6</sup> Well No. <b>2</b>

<sup>7</sup> Surface Location

UL or lot no.	Section	Township	Range	Lot Idn	Feet from the	North/South line	Feet from the	East/West line	County
B <sub>1</sub>	2	T31N	R8W		1055'	North	2221'	East	San Juan

<sup>8</sup> Proposed Bottom Hole Location If Different From Surface

UL or lot no.	Section	Township	Range	Lot Idn	Feet from the	North/South line	Feet from the	East/West line	County

<sup>9</sup> Proposed Pool 1 <b>Basin Fruitland (71629)</b>	<sup>10</sup> Proposed Pool 2
--	-------------------------------

<sup>11</sup> Work Type Code <b>N</b>	<sup>12</sup> Well Type Code <b>G</b>	<sup>13</sup> Cable/Rotary <b>R</b>	<sup>14</sup> Lease Type Code <b>S</b>	<sup>15</sup> Ground Level Elevation <b>6710'</b>
<sup>16</sup> Multiple <b>N</b>	<sup>17</sup> Proposed Depth <b>3920' RKB</b>	<sup>18</sup> Formation <b>Fruitland Coal</b>	<sup>19</sup> Contractor <b>Not Chosen</b>	<sup>20</sup> Spud Date <b>As soon as rig available</b>

<sup>21</sup> Proposed Casing and Cement Program

Hole Size	Casing Size	Casing weight/foot	Setting Depth	Sacks of Cement	Estimated TOC
14 $\frac{1}{2}$ "	10 $\frac{1}{2}$ "	40.5 lb.	~240' RKB	170 sx	Surface
9 $\frac{7}{8}$ "	7 $\frac{5}{8}$ "	26.4 lb.	~3400' RKB	679 sx	Surface
6 $\frac{1}{2}$ "	5 $\frac{1}{2}$ "	15.5 lb.	~3920' RKB	Uncemented	

<sup>22</sup> Describe the proposed program. If this application is to DEEPEN or PLUG BACK give the data on the present productive zone and proposed new productive zone. Describe the blowout prevention program, if any. Use additional sheets if necessary.

Merrion will conduct the well drilling phase by drilling a 14 $\frac{1}{2}$ " hole with spud mud to a depth of approximately 240 feet. After setting 10 $\frac{1}{2}$ " surface casing will install blowout preventers, wait on cement and pressure test surface shoe to 600 psi prior to drill out. Will drill a 9 $\frac{7}{8}$ " hole with conventional mud into the Fruitland formation to a depth of approximately 3400 feet. After setting 7 $\frac{5}{8}$ " intermediate casing, we will drill a 6 $\frac{1}{2}$ " hole with air through the Fruitland Coal formation into the top of the Pictured Cliffs to a total depth (td) of  $\pm$ 3920 feet KB. After drilling to td, we will run logs. The completion will be by cavitation. Finally, we will run a 5 $\frac{1}{2}$ " pre-perforated uncemented liner to 3920 feet to maintain wellbore integrity. Blowout preventers will be double ram, 3000 psi working pressure. (Wellbore schematic attached)

Formation tops: Ojo Alamo 2542', Kirtland 2642', Fruitland 3130', Pictured Cliffs 3762'.

<sup>23</sup> I hereby certify that the information given above is true and complete to the best of my knowledge and belief.

Signature:

Printed name: **Connie S. Dinning**

Title: **Production Engineer**

Date: **December 2, 2002**

Phone: **327-9801**

OIL CONSERVATION DIVISION

Approved by:

Title: **DEPUTY OIL & GAS INSPECTOR, DIST. 23**

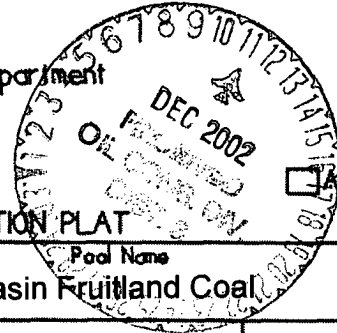
Approval Date: **DEC 11 2002**

Expiration Date: **DEC 11 2003**

Conditions of Approval :  
Attached ☐

State of New Mexico  
Energy, Minerals & Mining Resources Department  
OIL CONSERVATION DIVISION  
2040 South Pacheco  
Santa Fe, NM 87505

Form C - 102



☐ AMENDED REPORT

WELL LOCATION AND ACREAGE DEDICATION PLAT

APA Number 30-045-31280	Pool Code 71629	Pool Name Basin Fruitland Coal
Property Code 24565	Property Name U Da Well Com	Well Number 2
OGRD No. 014634	Operator Name MERRION OIL & GAS	Elevation 6710'

Surface Location

UL or Lot	Sec.	Twp.	Rge.	Lot Ltr.	Feet from	North/South	Feet from	East/West	County
B	2	31 N.	8 W.	nwne	1055'	NORTH	222'	East	SAN JUAN

Bottom Hole Location If Different From Surface

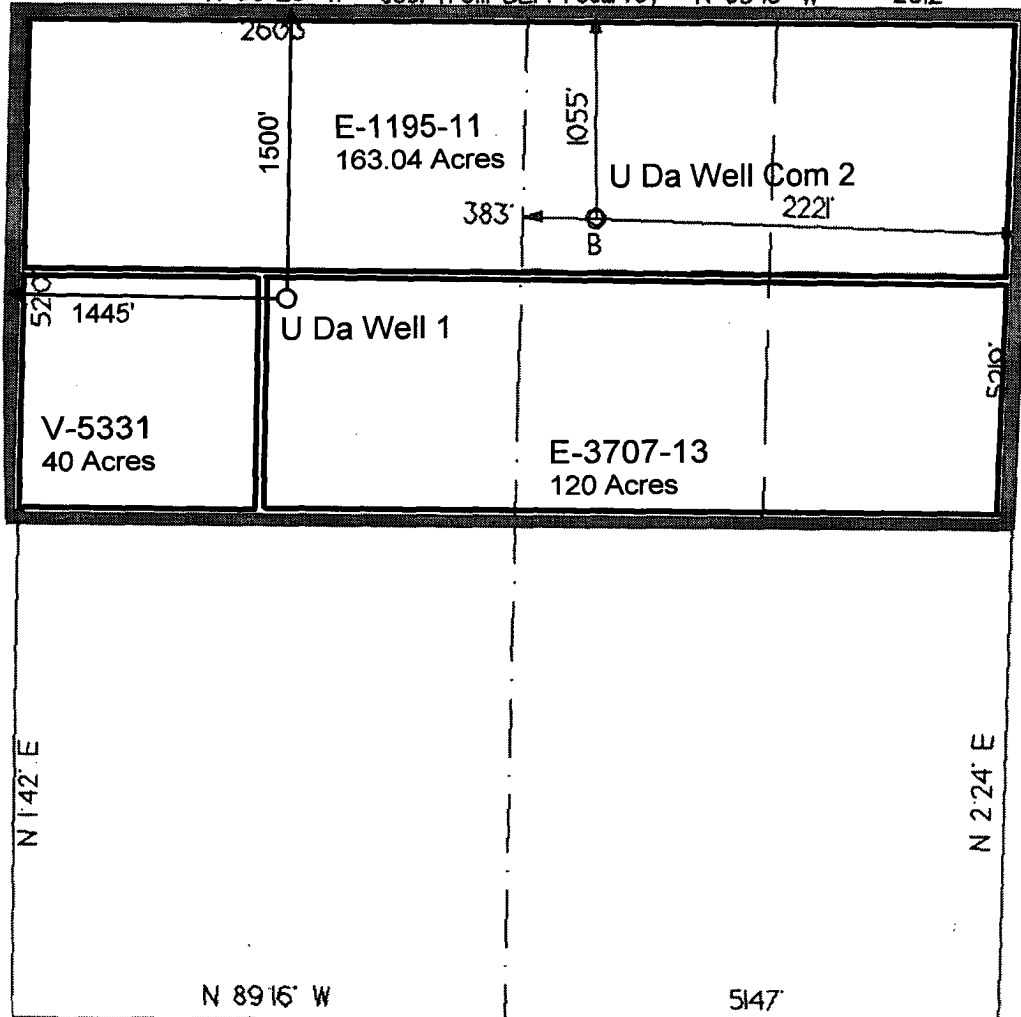
UL or Lot	Sec.	Twp.	Rge.	Lot Ltr.	Feet from	North/South	Feet from	East/West	County

Dedication 320 Ae	Joint ?	Consolidation	Order No.
----------------------	---------	---------------	-----------

323.04

NO ALLOWABLE WILL ASSIGNED TO THIS COMPLETION UNTIL ALL INTERESTS HAVE BEEN CONSOLIDATED  
OR A NON-STANDARD UNIT HAS BEEN APPROVED BY THE DIVISION

N 89°23' W sec. from BLM resurvey N 89°19' W 2612'



OPERATOR CERTIFICATION

I hereby certify that the information contained herein is true and complete to the best of my knowledge and belief.

Signature

*[Signature]*

Printed Name Connie S. Dinning

Title Production Engineer

Date December 2, 2002

SURVEYOR CERTIFICATION

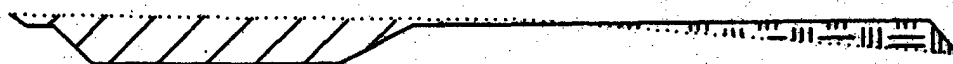
I hereby certify that the well location on this plat was plotted from field notes of actual surveys made by me or under my supervision, and that the same is true and correct to the best of my belief.

Date of Survey

Signature  
Professional Surveyor



well pad & section



Cross section

# Merrion Oil & Gas Corporation Wellbore Schematic

## U-Da-Well No. 2

*Proposed Wellbore Configuration*

Location: 1055' fnl & 2221' fel (nw ne)  
Sec 2, T31N, R8W, NMPM  
San Juan Co, New Mexico  
Prepared: 11/27/02

Elevation: 6,710' GL  
6,723' RKB

By: Connie Dinning

