

ICT I
N. French Dr., Hobbs, N.M. 88240

State of New Mexico
Energy, Minerals & Natural Resources Department

Form C-102
Revised August 15, 2000

ICT II
outh First, Artesia, N.M. 88210

ICT III
Rio Brazos Rd., Aztec, N.M. 87410

OIL CONSERVATION DIVISION

2040 South Pacheco
Santa Fe, NM 87505

Submit to Appropriate District Office
State Lease - 4 Copies
Fee Lease - 3 Copies

HCT IV
South Pacheco, Santa Fe, NM 87505

☐ AMENDED REPORT

WELL LOCATION AND ACREAGE DEDICATION PLAT

¹ API Number 30-043-20982	² Pool Code	³ Pool Name BASIN FRUITLAND COAL
⁴ Property Code	⁵ Property Name BOIS d'ARC DIVIDE 22	⁶ Well Number 2
⁷ GRID No. 163458	⁸ Operator Name SYNERGY OPERATING LLC	⁹ Elevation 7238'

¹⁰ Surface Location

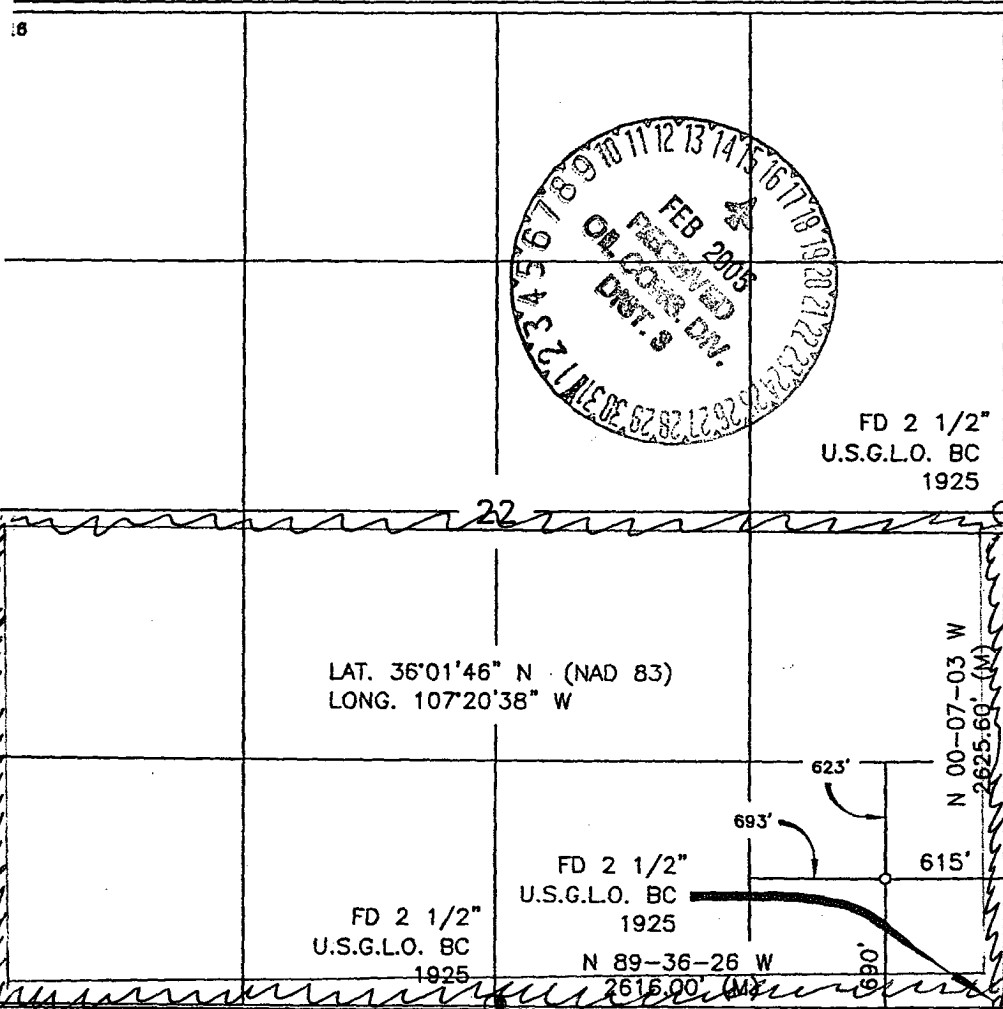
L or lot no.	Section	Township	Range	Lot Idn	Feet from the	North/South line	Feet from the	East/West line	County
P	22	21-N	5-W		690'	SOUTH	615'	EAST	SANDOVAL

¹¹ Bottom Hole Location If Different From Surface

L or lot no.	Section	Township	Range	Lot Idn	Feet from the	North/South line	Feet from the	East/West line	County

Dedicated Acres 320	¹² Joint or Infill 5/2	¹³ Consolidation Code	¹⁴ Order No.
------------------------	--------------------------------------	----------------------------------	-------------------------

NO ALLOWABLE WILL BE ASSIGNED TO THIS COMPLETION UNTIL ALL INTERESTS HAVE BEEN CONSOLIDATED
OR A NON-STANDARD UNIT HAS BEEN APPROVED BY THE DIVISION



¹⁷ OPERATOR CERTIFICATION

I hereby certify that the information contained herein is true and complete to the best of my knowledge and belief

[Signature]
Signature
THOMAS E. MULLINS
Printed Name
ENGINEERING MANAGER
Title
3-3-2003
Date

¹⁸ SURVEYOR CERTIFICATION

I hereby certify that the well location shown on this plat was plotted from field notes of actual surveys made by me or under my supervision, and that the same is true and correct to the best of my belief.

[Signature]
Date of Survey
Signature and Seal of Professional Surveyor:
14827
14827
Certificate Number