

UNITED STATES  
DEPARTMENT OF THE INTERIOR  
BUREAU OF LAND MANAGEMENT

Sundry Notices and Reports on Wells

1. Type of Well  
GAS

2. Name of Operator  
**BURLINGTON**  
RESOURCES OIL & GAS COMPANY LP

3. Address & Phone No. of Operator  
PO Box 4289, Farmington, NM 87499 (505) 326-9700

4. Location of Well, Footage, Sec., T, R, M  
990' FNL, 1650' FEL, Sec. 3, T-27-N, R-5-W, NMPM

5. Lease Number  
NMSF-079393  
6. If Indian, All. or  
Tribe Name

7. Unit Agreement Name

San Juan 27-5 Unit  
Well Name & Number  
San Juan 27-5 U #21

9. API Well No.  
30-039-07207

10. Field and Pool  
Tapacito Pictured Cliffs  
Blanco Mesaverde

11. County and State  
Rio Arriba Co, NM

12. CHECK APPROPRIATE BOX TO INDICATE NATURE OF NOTICE, REPORT, OTHER DATA

Type of Submission

☒ Notice of Intent  
☐ Subsequent Report  
☐ Final Abandonment

Type of Action

☐ Abandonment  
☒ Recompletion  
☐ Plugging Back  
☐ Casing Repair  
☐ Altering Casing  
☒ Other - Commingle  
☐ Change of Plans  
☐ New Construction  
☐ Non-Routine Fracturing  
☐ Water Shut off  
☐ Conversion to Injection

13. Describe Proposed or Completed Operations

It is intended to recomplate the subject well according to the procedure outlined below and the wellbore diagrams that are attached.

Move in, rig up. TOOH with tubing. TIH, set CIBP at approximately 4353'. Perf one squeeze hole at approximately 3525'. TOOH. TIH, set cement retainer at approximately 3500'. Squeeze 100 sxs Type III cement under cement retainer and circulate. TOOH. Test casing to approximately 3000 psi for 15 minutes. Perforate and fracture stimulate Pictured Cliffs formation. Flow back well. TIH with mill and mill out CIBP. Clean up well to PBSD. TIH w/tubing. Rig down. Move off location. Put well to production.

Well will produce as a Pictured Cliffs/Mesaverde commingle. A down hole commingle application will be submitted for approval.

CONDITIONS OF APPROVAL  
Adhere to previously issued stipulations.

14. I hereby certify that the foregoing is true and correct.

Signed Nancy Oltmanns Title Senior Staff Specialist Date 2/7/05

(This space for Federal or State Office use)

APPROVED BY Jim Lovel Title Petr. Eng Date 2/16/05  
CONDITION OF APPROVAL, if any:

Title 18 U.S.C. Section 1001, makes it a crime for any person knowingly and willfully to make any department or agency of the United States any false, fictitious or fraudulent statements or representations as to any matter within its jurisdiction.

NMOC

District I

1625 N. French Dr., Hobbs, NM 88240

District II

1301 W. Grand Ave., Artesia, NM 88210

District III

1000 Rio Brazos Rd., Aztec, NM 87410

District IV1220 S. St Francis Dr., Santa Fe, NM  
87505

State of New Mexico  
Energy, Minerals and Natural Resources  
Oil Conservation Division  
1220 S. St Francis Dr.  
Santa Fe, NM 87505

Form C-102

Permit 6430

**WELL LOCATION AND ACREAGE DEDICATION PLAT**

API Number 30-039-07207	Pool Name TAPACITO PICTURED CLIFFS (PRO GAS)	Pool Code 85920
Property Code 7454	Property Name SAN JUAN 27 5 UNIT	Well No. 021
OGRID No. 14538	Operator Name BURLINGTON RESOURCES OIL & GAS CO	Elevation 6592

**Surface And Bottom Hole Location**

UL or Lot B	Section 3	Township 27N	Range 05W	Lot Idn	Feet From 990	N/S Line N	Feet From 1650	E/W Line E	County Rio Arriba
Dedicated Acres 159.16	Joint or Infill	Consolidation Code	Order No.						


**OPERATOR CERTIFICATION**

*I hereby certify that the information contained herein is true and complete to the best of my knowledge and belief.*

Electronically Signed By: *Nancy Olthmann*

Title: Senior Staff Regulatory Specialist

Date: 2/7/05

**SURVEYOR CERTIFICATION**

*I hereby certify that the well location shown on this plat was plotted from field notes of actual surveys made by me or under my supervision, and that the same is true and correct to the best of my belief.*

Surveyed By: C. O. Walker

Date of Survey: 01/22/1957

Certificate Number: 1007

# San Juan 27-5 Unit #21

990' N, 1650' E

B - 3 - 27N - 05W

Rio Arriba County, NM

LAT: 36 DEG 36.45

LONG: 107 DEG 20.57

GL = 6,592'

KB= 6,602'

## Current Wellbore

### Surface Casing:

10-3/4" 32.8# SW  
set @ 175  
Cement w/ 150 sx  
TOC @ surface by circ.

### Intermediate Casing:

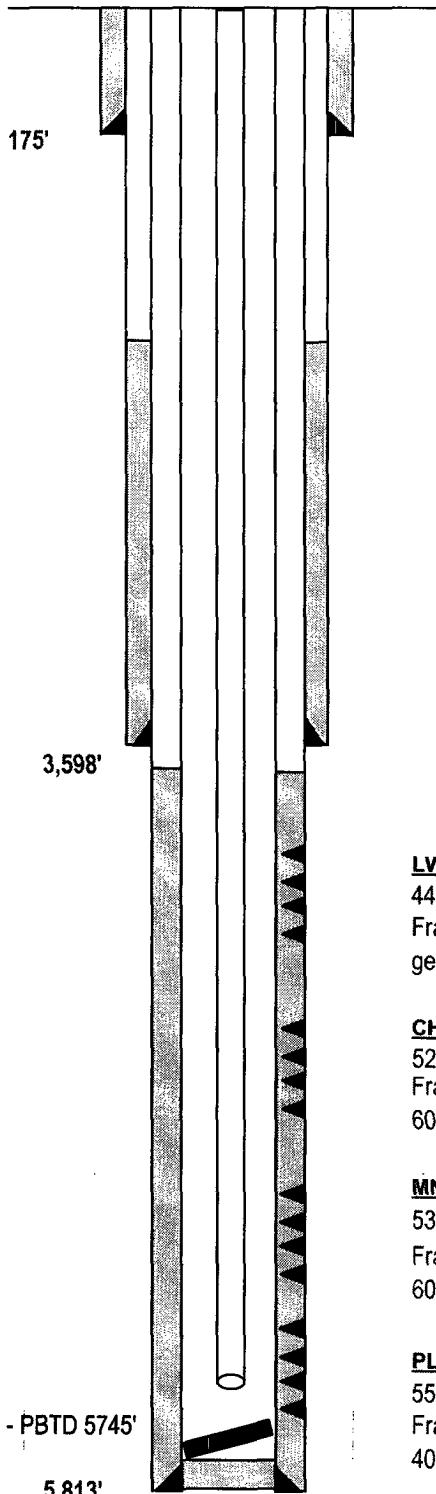
7-5/8" 26.4# J-55  
set @ 3598  
Cement w/ 150 sx  
TOC @ 2510' TS

### Current Tubing:

2-3/8" 181 jts  
4.7# J-55  
set @ 5630

### Production Casing:

5-1/2" 15.5# J-55  
set @ 5813  
Cement w/ 300 sx  
TOC @ 3870' CBL



Ojo Alamo 2,784'  
Kirtland 2,965'  
Fruitland Coal 3,250'  
Pictured Cliffs 3,450'  
Chacra  
Upper Cliff House 5,210'  
Menefee 5,294'  
Point Lookout 5,623'  
Gallup  
Dakota

### LW

4403' - 5138'  
Fractured with 70Q foamed 20# linear  
gel and 200,000# sand

### CH

5210' - 5278'  
Fractured with 70,700 gal sw and  
60,000# sand

### MN

5334' - 5535'  
Fractured with 60Q foamed 20# sw and  
60,000# sand

### PLO

5594' - 5732'  
Fractured with 50,000 gal sw and  
40,000# sand

14' perf gun left in bottom of well - PBTD 5745'

PBTD= 5,745'

TD= 5,820'

ARI

01/25/05

# San Juan 27-5 Unit #21

990' N, 1650' E

B - 3 - 27N - 05W

Rio Arriba County, NM

LAT: 36 DEG 36.45

LONG: 107 DEG 20.57

GL = 6,592'

KB= 6,602'

## Proposed Wellbore

### Surface Casing:

10-3/4" 32.8# SW  
set @ 175  
Cement w/ 150 sx  
TOC @ surface by circ.

### Intermediate Casing:

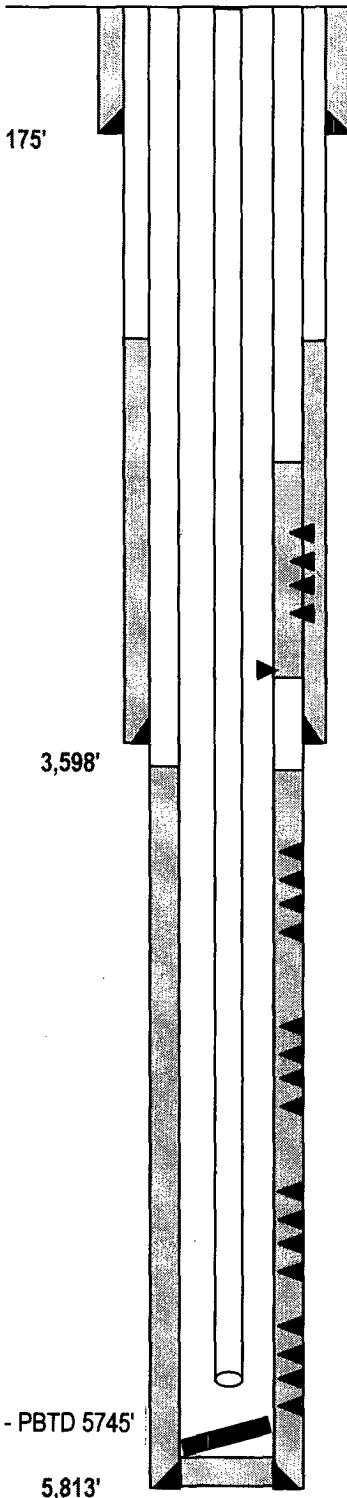
7-5/8" 26.4# J-55  
set @ 3598  
Cement w/ 150 sx  
TOC @ 2510' TS

### Current Tubing:

2-3/8" 181 jts  
4.7# J-55  
set @ 5630

### Production Casing:

5-1/2" 15.5# J-55  
set @ 5813  
Cement w/ 300 sx  
TOC @ 3870' CBL



14' perf gun left in bottom of well - PBTD 5745'

5,813'

PBTD= 5,745'

TD= 5,820'

Ojo Alamo 2,784'  
Kirtland 2,965'  
Fruitland Coal 3,250'  
Pictured Cliffs 3,450'  
Chacra  
Upper Cliff House 5,210'  
Menefee 5,294'  
Point Lookout 5,623'  
Gallup  
Dakota

### PROPOSED PC:

+/-3450' - +/-3490'

100,000 lbs 70 Q 20# LG foam

Sqz perf @ 3525' with 100 sxs type III circ

### LW

4403' - 5138'

Fractured with 70Q foamed 20# linear  
gel and 200,000# sand

### CH

5210' - 5278'

Fractured with 70,700 gal sw and  
60,000# sand

### MN

5334' - 5535'

Fractured with 60Q foamed 20# sw and  
60,000# sand

### PLO

5594' - 5732'

Fractured with 50,000 gal sw and  
40,000# sand

ARI

01/25/05