

Company.....Southern Union Gas Company.....

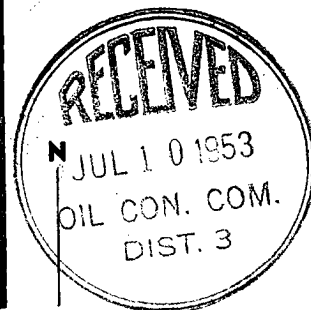
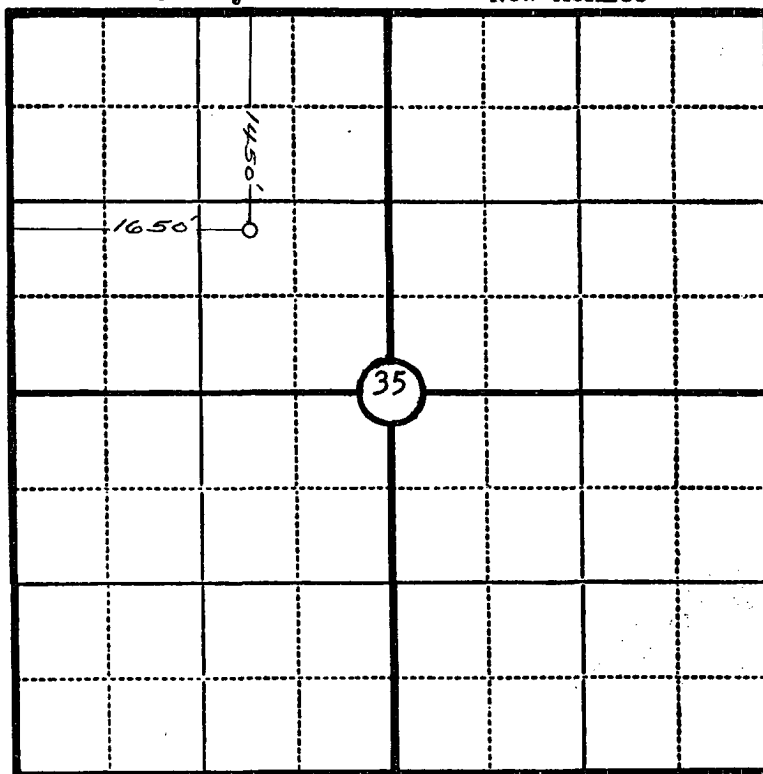
Lease.....Texas Navajo.....Well No. 2-A.....

Sec. 35....., T. 32 N....., R. 18 W., N.M.P.M.....

Location.....1450' from the North line and 1650' from
the West line.

San Juan County

New Mexico



Scale—4 inches equal 1 mile.

This is to certify that the above plat was prepared from field notes of actual surveys made by me or under my supervision and that the same are true and correct to the best of my knowledge and belief.

Ernest V. Echohawk

Seal:

Registered Professional
Engineer and Land Surveyor.

Ernest V. Echohawk
N. Mex. Reg. No. 1545

SurveyedMarch 17....., 1953