

UNITED STATES
DEPARTMENT OF THE INTERIOR
BUREAU OF LAND MANAGEMENT

FORM APPROVED
OMB No. 1004-0136
Expires November 30, 2000

APPLICATION FOR PERMIT TO DRILL OR REENTER

1a. Type of Work: <input checked="" type="checkbox"/> DRILL <input type="checkbox"/> REENTER		5. Lease Serial No. SF-078110
1b. Type of Well: <input type="checkbox"/> Oil Well <input type="checkbox"/> Gas Well <input checked="" type="checkbox"/> Other: CBM <input checked="" type="checkbox"/> Single Zone <input type="checkbox"/> Multiple Zone		6. If Indian, Allottee or Tribe Name
2. Name of Operator DUGAN PRODUCTION CORP.		7. If Unit or CA Agreement, Name and No.
Contact: KURT FAGRELIUS E-Mail: kfagrelus@duganproduction.com		8. Lease Name and Well No. FEDERAL 1101
3a. Address 709 EAST MURRAY DRIVE FARMINGTON, NM 87401	3b. Phone No. (include area code) Ph: 505.325.1821 Fx: 505.327.4613	9. API Well No. 3004531785
4. Location of Well (Report location clearly and in accordance with any State requirements. *) At surface SESW 660FSL 2085FWL 36.44590 N Lat, 108.15440 W Lon At proposed prod. zone		10. Field and Pool, or Exploratory BASIN FRUITLAND COAL
14. Distance in miles and direction from nearest town or post office* INSIDE FARMINGTON, NM CITY LIMITS		11. Sec., T., R., M., or Blk. and Survey or Area N Sec 1 T29N R14W Mer NMP
15. Distance from proposed location to nearest property or lease line, ft. (Also to nearest drig. unit line, if any) 660'	16. No. of Acres in Lease 2497.51	12. County or Parish SAN JUAN
18. Distance from proposed location to nearest well, drilling, completed, applied for, on this lease, ft. 1850'	19. Proposed Depth 1320 MD	13. State NM
21. Elevations (Show whether DF, KB, RT, GL, etc.) 5525 GL	22. Approximate date work will start 09/01/2003	17. Spacing Unit dedicated to this well 320.00 5/2
		20. BLM/BIA Bond No. on file
		23. Estimated duration 5-DAYS

24. Attachments

The following, completed in accordance with the requirements of Onshore Oil and Gas Order No. 1, shall be attached to this form:

1. Well plat certified by a registered surveyor.
2. A Drilling Plan.
3. A Surface Use Plan (if the location is on National Forest System Lands, the SUPO shall be filed with the appropriate Forest Service Office).
4. Bond to cover the operations unless covered by an existing bond on file (see Item 20 above).
5. Operator certification
6. Such other site specific information and/or plans as may be required by the authorized officer.

25. Signature <i>Kurt Fagrelus</i>	Name (Printed/Typed) KURT FAGRELIUS	Date 04/02/2003
Title GEOLOGIST		
Approved by (Signature) <i>[Signature]</i>	Name (Printed/Typed)	Date 2-15-05
Title AFM	Office FFO	

Application approval does not warrant or certify the applicant holds legal or equitable title to those rights in the subject lease which would entitle the applicant to conduct operations thereon.
Conditions of approval, if any, are attached.

Title 18 U.S.C. Section 1001 and Title 43 U.S.C. Section 1212, make it a crime for any person knowingly and willfully to make to any department or agency of the United States any false, fictitious or fraudulent statements or representations as to any matter within its jurisdiction.

Additional Operator Remarks:

A water based gel-mud will be used to drill surface and production casing hole. Standard 2,000 psi BOP will be used to drill production hole. The Fruitland Coal will be completed from approximately 1155' to 1174'. The interval will be fractured.

NMOCD

This action is subject to technical and
procedural review pursuant to 43 CFR 3165.3
and appeal pursuant to 43 CFR 3165.4

DRILLING OPERATIONS AUTHORIZED ARE
SUBJECT TO COMPLIANCE WITH ATTACHED
"GENERAL REQUIREMENTS".

District I
PO Box 1980, Hobbs, NM 88241-1980

District II
PO Drawer 00, Artesia, NM 38211-0719

District III
1000 Rio Brazos Rd., Aztec, NM 87410

District IV
PO Box 2088, Santa Fe, NM 87504-2088

State of New Mexico
Energy, Minerals & Natural Resources Dept.

OIL CONSERVATION DIVISION
PO Box 2088
Santa Fe, NM 87504-2088

Form C-122
Revised February 21, 1991
Instructions on page 2
Submit to Appropriate District Office
State Lease - 4 Copies
Fee Lease - 3 Copies

☐ AMENDED REPORT

WELL LOCATION AND ACREAGE DEDICATION PLAT

*API Number 30-045-31785		*Pool Code 71629	*Pool Name BASIN FRUITLAND COAL
*Property Code 3682	*Property Name FEDERAL I		*Well Number 101
*GRID No. 006515	*Operator Name DUGAN PRODUCTION CORPORATION		*Elevation 5525'

¹⁰ Surface Location

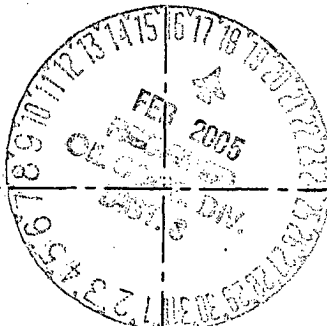

UL or lot no.	Section	Township	Range	Lot Ion	Feet from the	North/South line	Feet from the	East/West line	County
N	1	29N	14W		660	SOUTH	2085	WEST	SAN JUAN

¹¹ Bottom Hole Location If Different From Surface

UL or lot no.	Section	Township	Range	Lot Ion	Feet from the	North/South line	Feet from the	East/West line	County

¹² Dedicated Acres 320.0 Acres - (S/2)	¹³ Joint or Infill	¹⁴ Consolidation Code	¹⁵ Order No.
---	-------------------------------	----------------------------------	-------------------------

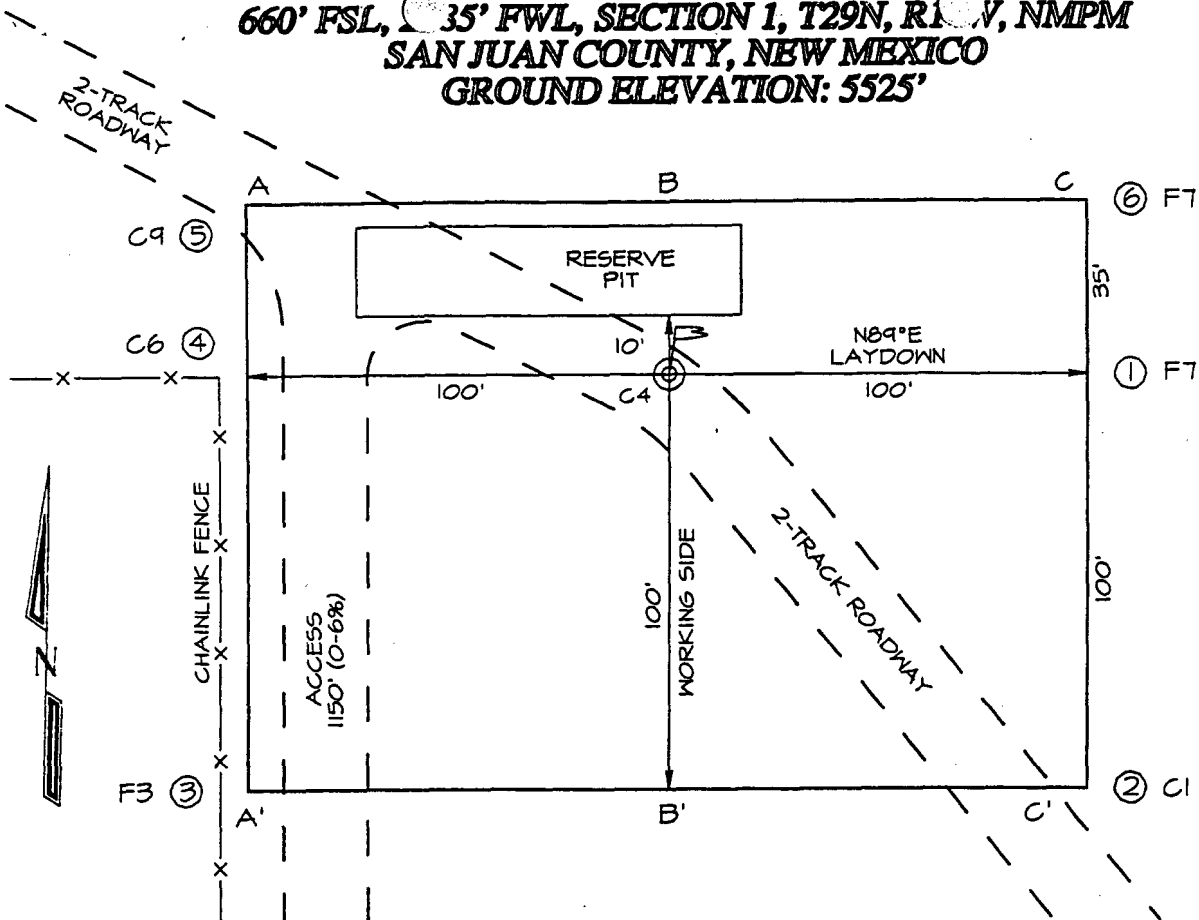
NO ALLOWABLE WILL BE ASSIGNED TO THIS COMPLETION UNTIL ALL INTERESTS HAVE BEEN CONSOLIDATED OR A NON-STANDARD UNIT HAS BEEN APPROVED BY THE DIVISION

¹⁶ 1254.00' LOT 4 1320.00' 2640.00'	5280.00'			1320.00' 1320.00' 2640.00'	¹⁷ OPERATOR CERTIFICATION I hereby certify that the information contained herein is true and complete to the best of my knowledge and belief. <i>Kurt Fagrelus</i> Signature Kurt Fagrelus Printed Name Geologist Title July 9, 2003 Date
	LOT 3	LOT 2	LOT 1		
<div style="text-align: center;">1 DUGAN 100% SF-078110</div> <div style="text-align: center;"></div> <div style="text-align: center;">2085' 660' 5253.60'</div>					¹⁸ SURVEYOR CERTIFICATION I hereby certify that the well location shown on this plat was plotted from field notes of actual surveys made by me or under my supervision, and that the same is true and correct to the best of my belief. Survey Date: DECEMBER 2, 2002 Signature and Seal of Professional Surveyor <div style="text-align: center;"> JASON C. EDWARDS Certificate Number 15269</div>

DUGAN PRODUCTION CORPORATION FEDERAL I #101
660' FSL, 35' FWL, SECTION 1, T29N, R10W, NMPM
SAN JUAN COUNTY, NEW MEXICO
GROUND ELEVATION: 5525'

PLAT 3.

LATITUDE: 36°44'59"
LONGITUDE: 108°15'44"
DATUM: NAD1927



PLAT NOTE:

SURFACE OWNER
Fee Land

A-A'						
5531'						
5521'						
5511'						

B-B'						
5531'						
5521'						
5511'						

C-C'						
5531'						
5521'						
5511'						

UNITED STATES
DEPARTMENT OF THE INTERIOR
BUREAU OF LAND MANAGEMENT

FORM APPROVED
Budget Bureau No. 1004-0135
Expires: March 31, 1993

SUNDRY NOTICES AND REPORTS ON WELLS

Do not use this form for proposals to drill or to deepen or reentry to a different reservoir.
Use "APPLICATION FOR PERMIT -" for such proposals

SUBMIT IN TRIPLICATE

070 FARMINGTON NM

1. Type of Well

☐ Oil Well ☒ Gas Well ☐ Other

2. Name of Operator

Dugan Production Corp.

3. Address and Telephone No.

P.O. Box 420, Farmington, NM 87499 (505) 325 - 1821

Location of Well (Footage, Sec., T., R., M., or Survey Description)

660' FSL & 2085' FWL (SE/4 SW/4)
Unit N, Sec. 1, T29N, R14W, NMPM

5. Lease Designation and Serial No.

SF 078110

6. If Indian, Allotted or Tribe Name

7. If Unit or CA, Agreement Designation

8. Well Name and No.

Federal I #101

9. API Well No.

30 045 31785

10. Field and Pool, or Exploratory Area

Basin Fruitland Coal

11. County or Parish, State

San Juan, NM

12. CHECK APPROPRIATE BOX(S) TO INDICATE NATURE OF NOTICE, REPORT, OR OTHER DATA

TYPE OF SUBMISSION

- ☒ Notice of Intent
☐ Subsequent Report
☐ Final Abandonment Notice

TYPE OF ACTION

- ☐ Abandonment
☐ Recompletion
☐ Plugging Back
☐ Casing Repair
☐ Altering Casing
☒ Other Change in APD
☐ Change of Plans
☐ New Construction
☐ Non-Routine Fracturing
☐ Water Shut-Off
☐ Conversion to Injection
☐ Dispose Water

(Note: Report results of multiple completion on Well Completion or Recompletion Report and Log form.)

13. Describe Proposed or Completed Operations (Clearly state all pertinent details, and give pertinent dates, including estimated date of starting any proposed work. If well is directionally drilled, give subsurface locations and measured and true vertical depths for all markers and zones pertinent to this work.)

Amend casing program to include conductor pipe as follows:

Conductor pipe 13-3/8", hole size 20". Set at 50' (base of boulders) w/90 cu ft cement circulated to surface.

Surface casing and production casing plans proposed in original APD will not be changed.

RECEIVED
FEB 17 2005

BY:

14. I hereby certify that the foregoing is true and correct

Signed

Kurt Fagrellius
Kurt Fagrellius

Title

Geologist

Date

10/11/2004

(This space for Federal or State office use)

Approved by

[Signature]
[Signature]

Title

AFM

Date

2-15-05

Conditions of approval, if any:

Title 18 U.S.C. Section 1001, makes it a crime for any person knowingly and willfully to make to any department or agency of the United States any false, fictitious or fraudulent statements or representations as to any matter within its jurisdiction.

*See Instruction on Reverse Side

OPERATOR
NMOCD

EXHIBIT B
OPERATIONS PLAN
Federal I #101

APPROXIMATE FORMATION TOPS:

Kirtland	Surface
Fruitland	825'
Pictured Cliffs	1175'
Total Depth	1320'

Catch samples every 10 feet from 1100 feet to total depth.

LOGGING PROGRAM:

Run cased hole GR-CCL-CNL from total depth to surface.

CASING PROGRAM:

<u>Hole Size</u>	<u>Casing Size</u>	<u>Wt./ft.</u>	<u>Setting Depth</u>	<u>Grade and Condition</u>
11"	8-5/8"	24#	120'	J-55
7"	5-1/2"	14#	1320'	J-55

Plan to drill a 11" hole and set 120' of 8-5/8" OD, 20#, J-55 surface casing. Then plan to drill a 7" hole to total depth with gel-water mud program to test the Fruitland Coal. 5-1/2", 10.5#, J-55 production casing will be run and cemented. Cased hole GR-CCL-CNL log will be run. Productive zone will be perforated and fractured. After frac, the well will be cleaned out and production equipment will be installed.

CEMENTING PROGRAM:

Surface: Cement to surface with 70 cf Class B + 2% CaCl₂.
Circulate to surface.

Production Stage-Cement with 140 cf 2% lodense with
1/4# celloflake/sx followed by 70 cf Class "B" with
1/4# celloflake/sx.
Total cement slurry for production stage is 210 cf
Circulate cement to surface.

An adequate spacer will be pumped ahead of the cement slurry to help prevent mud contamination of the cement. An adequate number of casing centralizers will be run through usable water zones to ensure that casing is centralized through these zones. The adequate number of centralizers will be determined based on API standards. Centralizers to impart a swirling action around the casing will be used just below and into the base of the

lowest usable water zone. These devices will assist mud displacement, increase cement bonding potential and create an effective hydraulic seal. A chronological log will be kept which records the pump rate, pump pressure, slurry density, and slurry volume for the cement job. The log will be sent to the BLM after completion of the job.

WELLHEAD EQUIPMENT:

Huber 8-5/8"x5-1/2" casing head, 1000# WP, tested to 2000#.
Huber 5-1/2"x2-3/8" tubing head, 1000# WP, tested to 2000#.

BOP and Related Equipment will include for a 2000 psi system:
(Exhibit D)

Annular preventer, double ram, or 2 rams with one being blind and one being a pipe ram.

Kill line (2" minimum)

1 kill line valve (2" minimum)

1 choke line valve

2 chokes

Upper kelly cock valve with handle available

Safety valve and subs to fit all drill string connections in use.

Pressure gauge on choke manifold.

2" minimum choke line.

Fill-up line.

Contacts:

Dugan Prod.Corp. Office & Radio Dispatch: 325-1821

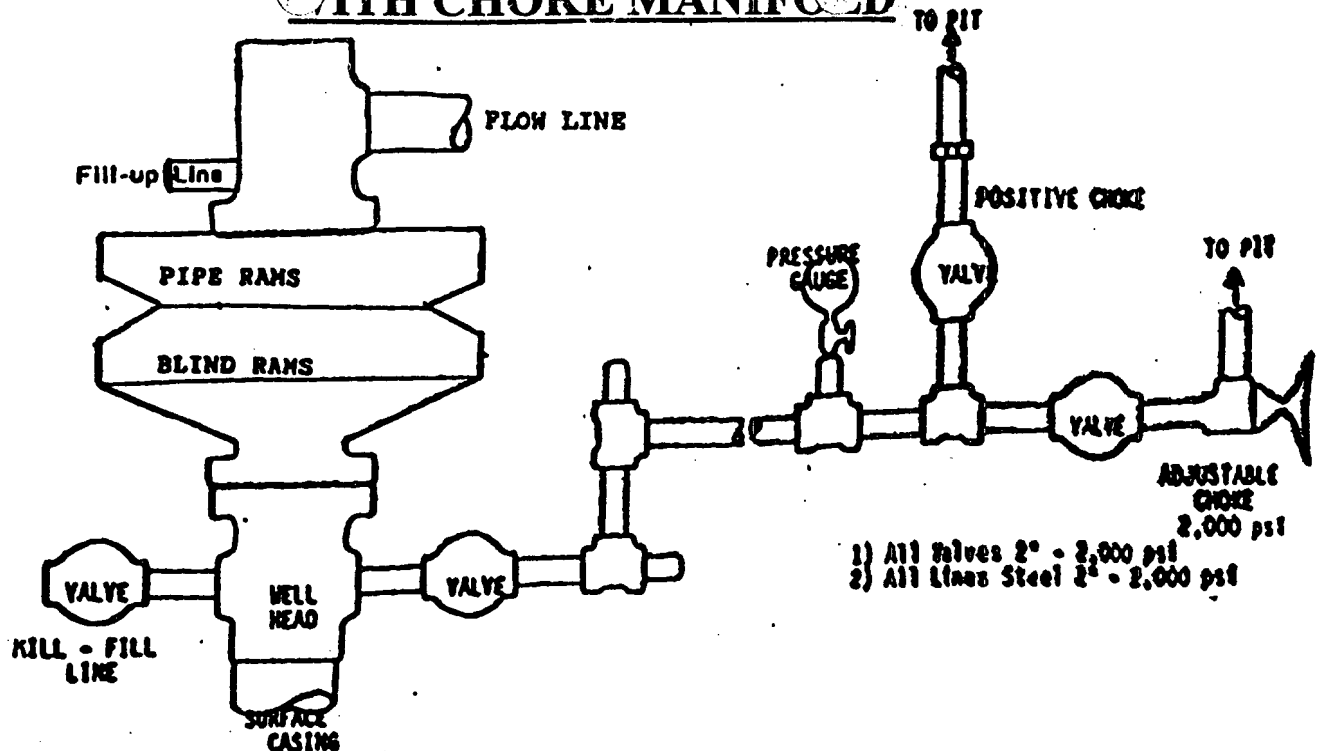
Mark Brown	327-3632 (H)
	320-8247 (M)

Kurt Fagrelus	325-4327 (H)
	320-8248 (M)

John Alexander	325-6927 (H)
	320-1935 (M)

BOP DIAGRAM WITH CHOKE MANIFOLD

EXHIBIT D.

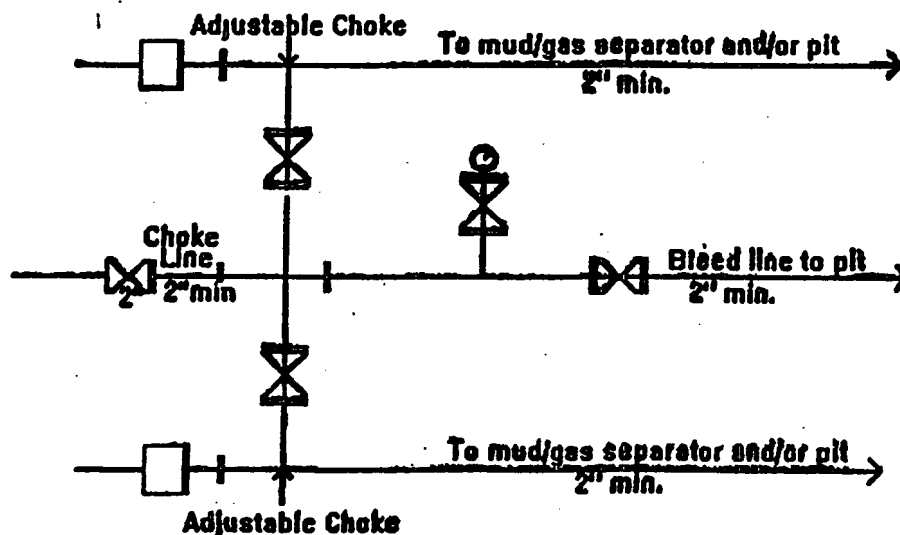


BOP and Related Equipment will include for a 2000 psi system:

2000 PSI DOUBLE RAM BLOWOUT PREVENTER

- Kill line (2" minimum)
- 1 kill line valve (2" minimum)
- 1 choke line valve
- 2 chokes
- Upper kelly cock valve with handle available
- Safety valve and subs to fit all drill string connections in use
- Pressure gauge on choke manifold
- 2" minimum choke line
- Fill-up line above the uppermost preventer

BOP equipment will be tested as required in Section III A.1 of Onshore Order 2, plus a 30% safety factor.



2M Choke Manifold Equipment - Configuration May Vary

DUGAN PRODUCTION CORP.

FEDERAL I #101