

UNITED STATES
DEPARTMENT OF THE INTERIOR
BUREAU OF LAND MANAGEMENT

Sundry Notices and Reports on Wells

1. Type of Well
GAS

2. Name of Operator
BURLINGTON
RESOURCES OIL & GAS COMPANY LP

3. Address & Phone No. of Operator
PO Box 4289, Farmington, NM 87499 (505) 326-9700

4. Location of Well, Footage, Sec., T, R, M
1075' FSL, 830' FEL, Sec. 8, T-29-N, R-7-W, NMMP

5. Lease Number
NMSF-078423

6. If Indian, All. or
Tribe Name

7. Unit Agreement Name

8. Well Name & Number
San Juan 29-7 Unit
San Juan 29-7 U #141

9. API Well No.
30-039-24145

10. Field and Pool
So Blanco Pictured Cliff
Basin Dakota

11. County and State
Rio Arriba Co, NM

12. CHECK APPROPRIATE BOX TO INDICATE NATURE OF NOTICE, REPORT, OTHER DATA

Type of Submission

Type of Action

☒ Notice of Intent

☐ Abandonment

☐ Change of Plans

☐ Subsequent Report

☒ Recompletion

☐ New Construction

☐ Final Abandonment

☐ Plugging Back

☐ Non-Routine Fracturing

☐ Casing Repair

☐ Water Shut off

☐ Altering Casing

☐ Conversion to Injection

☐ Other -

13. Describe Proposed or Completed Operations

It is intended to recompleate the subject well in the Pictured Cliffs Formation according to the procedure below. The Dakota formation will be plugged and abandoned. The well will produce as a single Pictured Cliffs.

Move in and rig up. Trip out of hole with tubing. Trip in hole with cement retainer, set at approximately 7776'. Pressure test annulus and tubing to 500 psi for 15 minutes. Plug #1: plug and abandon Dakota formation by spotting 12 sacks of cement on top of cement retainer with top of cement at approximately 7676'. (All cement will be Type III (1.39 yield, 14.5 ppg). Pick up tubing to 6890'. Plug #2: plug and abandon Gallup formation by spotting 12 sacks of cement of top of cement retainer with top of cement at approximately 6790'. Pressure test plug to 500 psi for 15 minutes. Pick up tubing to 5245'. Plug #3: plug and abandon Mesaverde formation by spotting 12 sacks of cement of top of cement retainer with top of cement at approximately 5145'. Pressure test plug to 500 psi for 15 minutes. Trip out of hole. Shoot squeeze hole at approximately 3675'. Set cement retainer at approximately 3650'. Circulate 150 sacks Type III cement. Wait on cement. Pressure test casing to 3500 psi for 15 minutes. Perforate and fracture stimulate the Pictured Cliffs formation. Flow back well. Trip in hole. Mill out cement retainer at 3650'. Clean up well. Trip in hole with tubing. Rig down. Move off. Return well to production as a single Pictured Cliffs well.

CONDITIONS OF APPROVAL
Adhere to previously issued stipulations.

14. I hereby certify that the foregoing is true and correct.

Signed Nancy Oltmanns Title Senior Staff Specialist Date 2/23/05

(This space for Federal or State Office use)

APPROVED BY Jim Leeb Title Petr. Eng Date 3/10/05

CONDITION OF APPROVAL, if any:

Title 18 USC Section 1001 makes it a crime for any person knowingly and willfully to make any department or agency of the United States any false, fictitious or fraudulent statements or representations as to any matter within its jurisdiction.

NMOCD

District I

1625 N. French Dr., Hobbs, NM 88240

District II

1301 W. Grand Ave., Artesia, NM 88210

District III

1000 Rio Brazos Rd., Aztec, NM 87410

District IV1220 S. St Francis Dr., Santa Fe, NM
87505

State of New Mexico
Energy, Minerals and Natural Resources
Oil Conservation Division
1220 S. St Francis Dr.
Santa Fe, NM 87505

Form C-102

Permit 7254

WELL LOCATION AND ACREAGE DEDICATION PLAT

API Number 30-039-24145	Pool Name BLANCO P. C. SOUTH (PRORATED GAS)	Pool Code 72439
Property Code 7465	Property Name SAN JUAN 29 7 UNIT	Well No. 141
OGRID No. 14538	Operator Name BURLINGTON RESOURCES OIL & GAS CO	Elevation 6753

Surface And Bottom Hole Location

UL or Lot P	Section 8	Township 29N	Range 07W	Lot Idn	Feet From 1075	N/S Line S	Feet From 830	E/W Line E	County Rio Arriba
Dedicated Acres 160	Joint or Infill		Consolidation Code		Order No.				

OPERATOR CERTIFICATION

I hereby certify that the information contained herein is true and complete to the best of my knowledge and belief.

Electronically Signed By: *Nancy Olthman*

Title: Senior Staff Regulatory Specialist

Date: 2-23-05

SURVEYOR CERTIFICATION

I hereby certify that the well location shown on this plat was plotted from field notes of actual surveys made by me or under my supervision, and that the same is true and correct to the best of my belief.

Surveyed By: William Mahnke

Date of Survey: 06/23/1987

Certificate Number: 8466

San Juan 29-7 Unit #141

1075' S, 830' E

P - 8 - 29N - 07W

Rio Arriba County, NM

LAT: 36 DEG 39.17

LONG: 107 DEG 23.46

GL = 6,763'

KB= 6,777'

Current Wellbore

Surface Casing:

9-5/8" 32.3# H-40
set @ 318
Cement w/ 160 sx
TOC @ surface by circ.

Intermediate Casing:

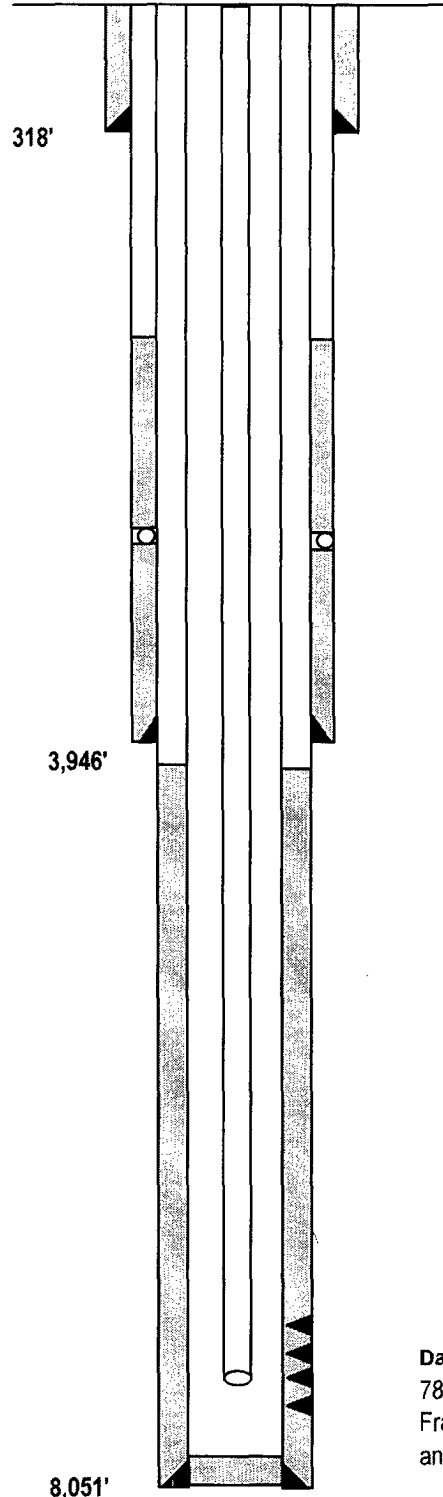
7" 20.0# K-55
set @ 3946 DVT 2744'
Cement w/ 430 sx
TOC @ 2250' TS

Current Tubing:

1-1/2" 243 jts
2.9# J-55
set @ 8007

Production Casing:

4-1/2" 10.5# K-55
set @ 6486
4-1/2" 11.6# K-55
set @ 8051
Cement w/ 340 sx
TOC @ 3995' TS



Ojo Alamo 2,546'
Kirtland 2,725'
Fruitland Coal 3,291'
Pictured Cliffs 3,556'
Chacra 4,512'
Upper Cliff House 5,195'
Menefee 5,340'
Point Lookout 5,710'
Gallup 6,840'
Dakota 7,901'

Dakota

7826' - 8028'

Fractured with 112,614 gal 50# guar gel
and 130,000# sand

8,051'

PBTD= 8,038'

TD= 8,051'

ARI

01/25/05

San Juan 29-7 Unit #141

1075' S, 830' E

P - 8 - 29N - 07W

Rio Arriba County, NM

LAT: 36 DEG 39.17

LONG: 107 DEG 23.46

GL = 6,763'

KB= 6,777'

Proposed Wellbore

Surface Casing:

9-5/8" 32.3# H-40
set @ 318
Cement w/ 160 sx
TOC @ surface by circ.

Intermediate Casing:

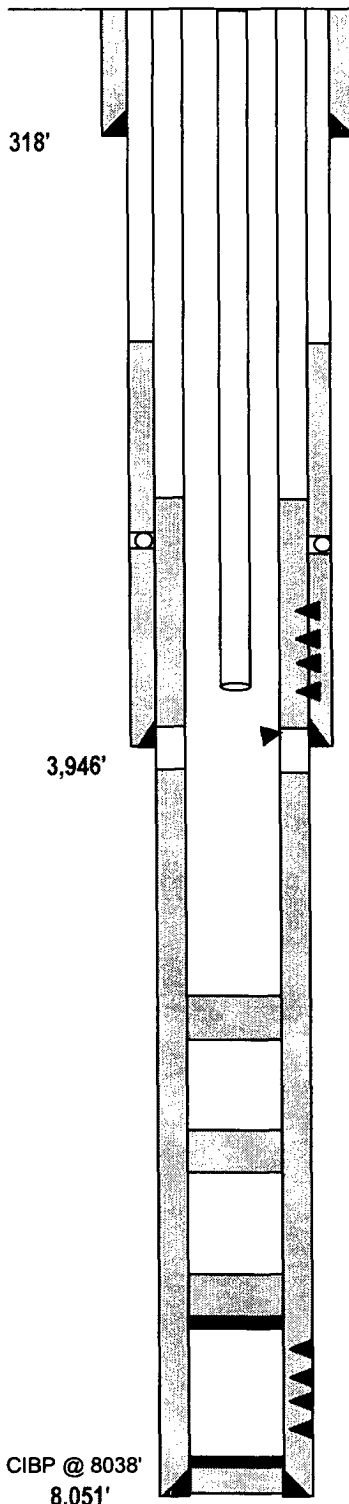
7" 20.0# K-55
set @ 3946 DVT 2744'
Cement w/ 430 sx
TOC @ 2250' TS

Proposed Tubing:

2-3/8" 4.7# J-55
set @ -3617

Production Casing:

4-1/2" 10.5# K-55
set @ 6486
4-1/2" 11.6# K-55
set @ 8051
Cement w/ 340 sx
TOC @ 3995' TS



Proposed Pictured Cliffs

+/-3558' - +/-3637'

Fractured with 70Q foamed 20# linear gel and 100,000# sand

Sqz perf at 3675', circ 150 sxs type III cmt

Mesaverde P&A'd

100' balanced plug - 12 sxs

5245' - 5145'; TOC @ 5145'

Gallup P&A'd

100' balanced plug - 12 sxs

6890' - 6790'. TOC @ 6790'

Dakota P&A'd

Cement Retainer @ 7776' w/ 12 sxs on top

TOC @ 7676'

Dakota

7826' - 8028'

Fractured with 112,614 gal 50# guar gel and 130,000# sand

ARI

01/25/05

Conditions of Approval:

Notice of Intent: To plug and abandon the Dakota, Gallup and Mesa Verde intervals and recompleate into the Pictured Cliffs formation.

**Burlington Resources Oil & Gas Company
San Juan 29 -7 Unit # 141
1075 FSL & 830 FEL
Sec 8. T29N. R7W.
API # 3003924145**

- 1. PU to 4268'. Spot 100' cement plug across Mesa Verde formation From 4268' to 4168', the top of the Huerfanito Bentonite, since there is off-setting production from Chacra equivalent sands.**