

**UNITED STATES  
DEPARTMENT OF THE INTERIOR  
BUREAU OF LAND MANAGEMENT**

**RECEIVED**

JUN 02 2011

Sundry Notices and Reports on Wells

**RECEIVED OCD**BUREAU OF LAND MANAGEMENT  
DEPARTMENT OF THE INTERIOR

2011 JUN -8 A 11:49

1. Type of Well  
GAS

2. Name of Operator

**BURLINGTON****RESOURCES OIL & GAS COMPANY LP**

3. Address & Phone No. of Operator

PO Box 4289, Farmington, NM 87499 (505) 326-9700

4. Location of Well, Footage, Sec., T, R, M

Unit K (NESW), 1840' FSL &amp; 1460' FWL, Section 34, T31N, R8W, NMPM

5. Lease Number

SF-079037

6. If Indian, All. or  
Tribe Name

7. Unit Agreement Name

8. Well Name & Number  
Hale 351

9. API Well No.

30-045-27649

10. Field and Pool  
Basin Fruitland Coal

11. County and State  
San Juan, NM

**12. CHECK APPROPRIATE BOX TO INDICATE NATURE OF NOTICE, REPORT, OTHER DATA**

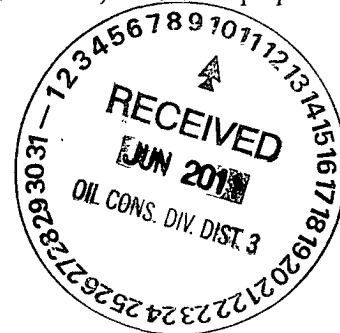
Type of Submission

Type of Action

☒ Notice of Intent☒ Abandonment☐ Change of Plans☐ Other —☐ Subsequent Report☐ Recompletion☐ New Construction☐ Final Abandonment☐ Plugging☐ Non-Routine Fracturing☐ Casing Repair☐ Water Shut off☐ Altering Casing☐ Conversion to Injection**13. Describe Proposed or Completed Operations**

Burlington Resources requests permission to P&A the subject well per the attached procedure, current and proposed wellbore schematic.

**Notify NMOCD 24 hrs  
prior to beginning  
operations**

**14. I hereby certify that the foregoing is true and correct.**Signed Crystal Tafoya Crystal TafoyaTitle: Staff Regulatory TechnicianDate 6/2/2011

(This space for Federal or State Office use)

APPROVED BY \_\_\_\_\_ Title \_\_\_\_\_

Date JUN 07 2011

CONDITION OF APPROVAL, if any:

Title 18 U.S.C. Section 1001, makes it a crime for any person knowingly and willfully to make any department or agency of the United States any false, fictitious or fraudulent statements or representations as to any matter within its jurisdiction

**NMOCD**

# ConocoPhillips

HALE 351

Expense - P&A

Lat 36° 51' 7.632" N

Long 107° 39' 57.024" W

## PROCEDURE

1. Hold pre-job safety meeting. Comply with all NMOCD, BLM, and COPC safety and environmental regulations. Test rig anchors prior to moving in rig.
2. This project requires a NMOCD C-144 CLEZ Closed-Loop System Permit for the use of an A-Plus steel tank to handle waste fluids circulated from the well and cement wash up.
3. MIRU work over rig. Check casing, tubing, and bradenhead pressures and record them in Wellview.
4. RU blow lines from casing valves and begin blowing down casing pressure. Kill well with water, as necessary, and at least pump tubing capacity of water down tubing.
5. ND wellhead and NU BOPE. Function test BOP. PU and remove tubing hanger.
6. TOOH with tubing/rods (per pertinent data sheet). LD tubing bailer (if applicable).

<b>Rods:</b>	Yes	<b>Size:</b>	3/4"	<b>Length:</b>	3053
<b>Tubing:</b>	Yes	<b>Size:</b>	2-3/8"	<b>Length:</b>	3065
<b>Packer:</b>	No	<b>Size:</b>		<b>Depth:</b>	

If this well has rods or a packer, then modify the work sequence in step #5 as appropriate. Round trip casing scraper through deepest perforation or as deep as possible.

**All cement volumes use 100% excess outside pipe and 50' excess inside pipe. The stabilizing wellbore fluid will be 8.3 ppg, sufficient to balance all exposed formation pressures. All cement will be ASTM Type II mixed at 15.6 ppg with a 1.18 cf/sk yield.**

### **7. Plug 1 (Fruitland, 2760-2860', 29 Sacks Class B Cement)**

RIH and set 7" CIBP at 2860'. Load casing and circulate well clean. Pressure test tubing to 1000 PSI. Pressure test casing to 800#. If casing does not test, then spot or tag subsequent plugs as appropriate. Mix 29 sxs Class B cement and spot above CIBP to isolate the Fruitland zone and top. PUH.

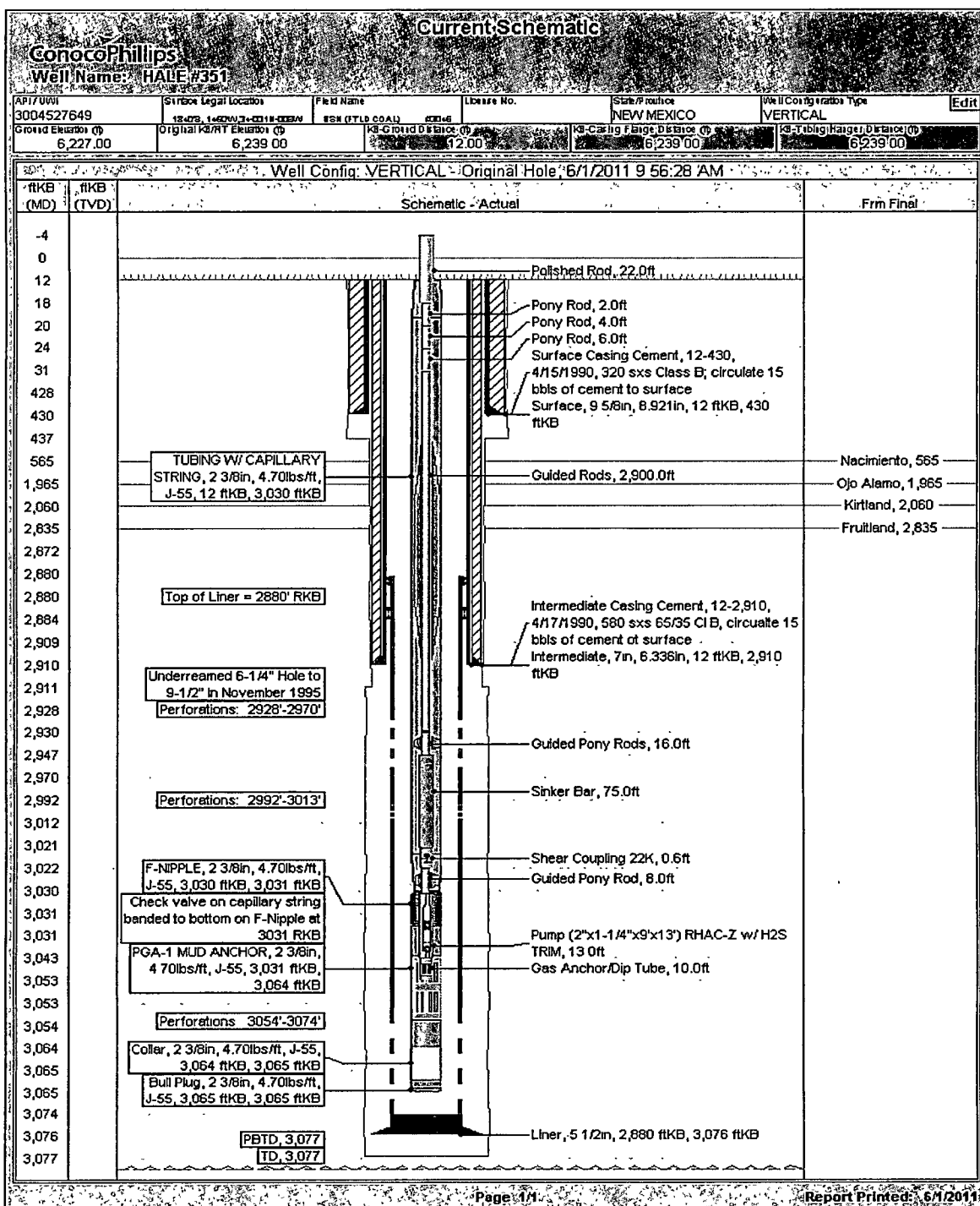
### **8. Plug 2 (Ojo Alamo & Kirtland, <sup>1854 2111</sup>~~1915-2110~~, 46 Sacks Class B Cement)**

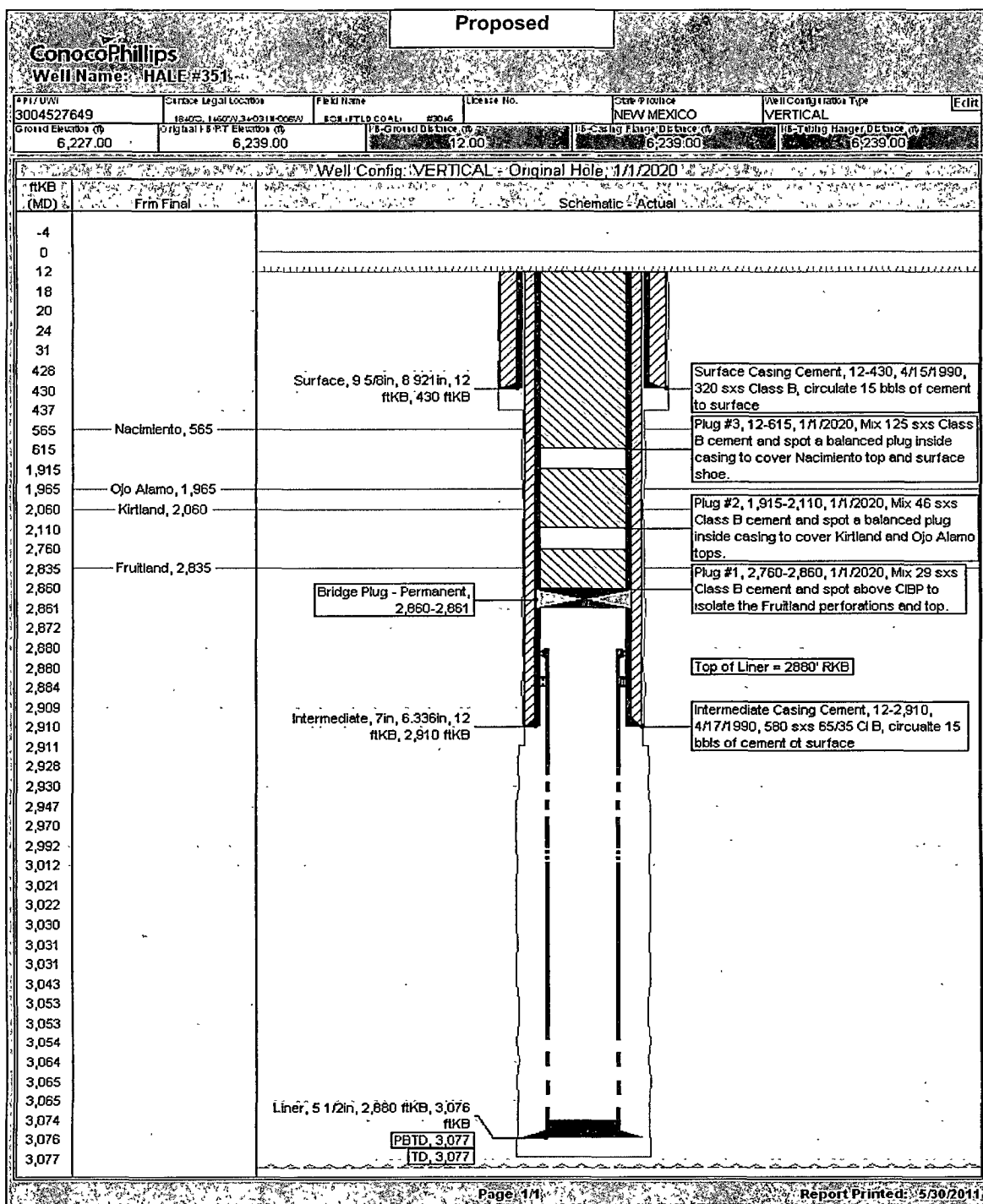
Mix ~~46~~ sxs Class B cement and spot a balanced plug inside casing to cover Kirtland and Ojo Alamo tops. PUH.

### **9. Plug 3 (Nacimiento & Surface Shoe, <sup>640</sup>~~0-645~~, 125 Sacks Class B Cement)**

Attempt to pressure test the bradenhead annulus to 300 PSI; note the volume to load. If the BH annulus holds pressure, then establish circulation out casing valve with water. Mix approximately 125 sxs Class B cement and spot a balanced plug from ~~645~~ <sup>640</sup> to surface, circulate good cement out casing valve. TOH and LD tubing. Shut well in and WOC. If the BH annulus does not test, then perforate at the appropriate depth and attempt to circulate cement to surface filling the casing from ~~645~~ and the annulus from the squeeze holes to surface. Shut in well and WOC. <sup>640</sup>

10. Nipple down BOP and cut off casing below the casing flange. Install P&A marker with cement to comply with regulations. Rig down, move off location, cut off anchors, and restore location.





**UNITED STATES DEPARTMENT OF THE INTERIOR  
BUREAU OF LAND MANAGEMENT  
FARMINGTON DISTRICT OFFICE  
1235 LA PLATA HIGHWAY  
FARMINGTON, NEW MEXICO 87401**

Attachment to notice of  
Intention to Abandon:

Re: Permanent Abandonment  
Well: 351 Hale

**CONDITIONS OF APPROVAL**

1. Plugging operations authorized are subject to the attached "General Requirements for Permanent Abandonment of Wells on Federal and Indian Lease."
2. Farmington Office is to be notified at least 24 hours before the plugging operations commence (505) 599-8907.
3. The following modifications to your plugging program are to be made:
  - a) Place the Kirtland/Ojo Alamo plug from 2111' – 1854'.
  - b) Place the Nacimiento/Surface plug from 640' to surface.
  - c) You are required to have H2S monitoring equipment and personnel on location during plugging operations.

You are also required to place cement excesses per 4.2 and 4.4 of the attached General Requirements.

Office Hours: 7:45 a.m. to 4:30 p.m.