

UNITED STATES
DEPARTMENT OF INTERIOR
BUREAU OF LAND MANAGEMENT

RECEIVED

FORM APPROVED
Budget Bureau No. 1004-0135
Expires: March 31, 1993

SUNDRY NOTICE AND REPORTS ON WELLS

JUN 06 2011

Do not use this form for proposals to drill or to deepen or reentry to a different reservoir. Use "APPLICATION TO DRILL" for permit for such proposals

ARMINGTON FIELD OFFICE
Bureau of Land Management

5. Lease Designation and Serial No.
NMSF-078771

6. If Indian, Allottee or Tribe Name

SUBMIT IN TRIPLICATE

1. Type of Well
Oil Well ☒ Gas Well ☐ Other ☐

2. Name of Operator
WILLIAMS PRODUCTION COMPANY

3. Address and Telephone No.
PO Box 640 Aztec, NM 87410-0640

4. Location of Well (Footage, Sec., T, R, M, or Survey Description)
1395' FSL & 2245' FEL NW/4 SE/4 Sec 11, T31N, R6W

7. If Unit or CA, Agreement Designation
Rosa Unit

8. Well Name and No.
Rosa Unit #36B

API Well No.
30-039-26600

10. Field and Pool, or Exploratory Area
BLANCO MV

11. County or Parish, State
Rio Arriba, New Mexico

CHECK APPROPRIATE BOX(S) TO INDICATE NATURE OF NOTICE, REPORT, OR OTHER DATA

TYPE OF SUBMISSION	TYPE OF ACTION
Notice of Intent	Abandonment
<input checked="" type="checkbox"/> Subsequent Report	Recompletion
Final Abandonment	Plugging Back
	Casing Repair
	Altering Casing
	<input checked="" type="checkbox"/> Other Bradenhead Repair
	Change of Plans
	New Construction
	Non-Routine Fracturing
	Water Shut-Off
	Conversion to Injection
	Dispose Water
	(Note: Report results of multiple completion on Well Completion or Recompletion Report and Log form.)

13. Describe Proposed or Completed Operations (Clearly state all pertinent details, and give pertinent dates, including estimated date of starting any proposed work. If well is directionally drilled, give subsurface locations and measured and true vertical depths for all markers and zones pertinent to this work.)*

5/28/2011 MIRU; SITP=120#, SICP=130. TOH, 186 jts, SN, 1 jt, 1/2 muleshoe=5857.11; MU Baker 7" G=plug & TIH, set plug @ 2050', Antelope press secondary seal to 1500 psi while TIH, 30 min, no lk off, once plug was set there was no blow out bradenhead ; load tbq & csg w/ prod wtr, braden head vlv open, press csg to 500 psi, lost press immediately

6/1/2011 TOH w/ 2 3/8" tbq & retrieving head ; NDBOP's & 11" x 7" tbq head, seals on mandrel good, about 2.5' from surface could see wtr running into 7" csg, about a 1/16" stream, ran for 2 to 3 min and then stopped. run Baker 7" fullbore packer on 1 jt 2 3/8" tbq & set @ 30', RBP set @ 2050', press 7" 20# csg to 540 psi 20 min, no lk off, bleed off press & pull packer. NU 7" x 11" tbq head & tst seals 1500 psi, no lk off. Black Warrior run CBL in 7" 20# csg 2040' to surface, showing cmt to surface. cutoff 9 5/8" csg & 7", stub back up 7" & 9 5/8" csg ; TIH w/ 2 3/8" prod tbq

6/2/2011 Hole in 7" csg 36" f/ surf, cut windows in 9 5/8" csg 48" f/ surface, cut off 7" csg below hole @ 36", finish cut off on 9 5/8" csg ; prep 7" csg & 9 5/8" csg to stub back up, weld on 8' piece of 7" 20# csg, slide 9 5/8" csg w/ csg head over 7" & weld up, install csg slips, NU tbq head & tst seals

14. I hereby certify that the foregoing is true and correct

Signed Ben Mitchell

Title Regulatory Specialist Date 6/6/2011

(This space for Federal or State office use)

Approved by _____

Title _____

Date JUN 07 2011

Conditions of approval, if any:

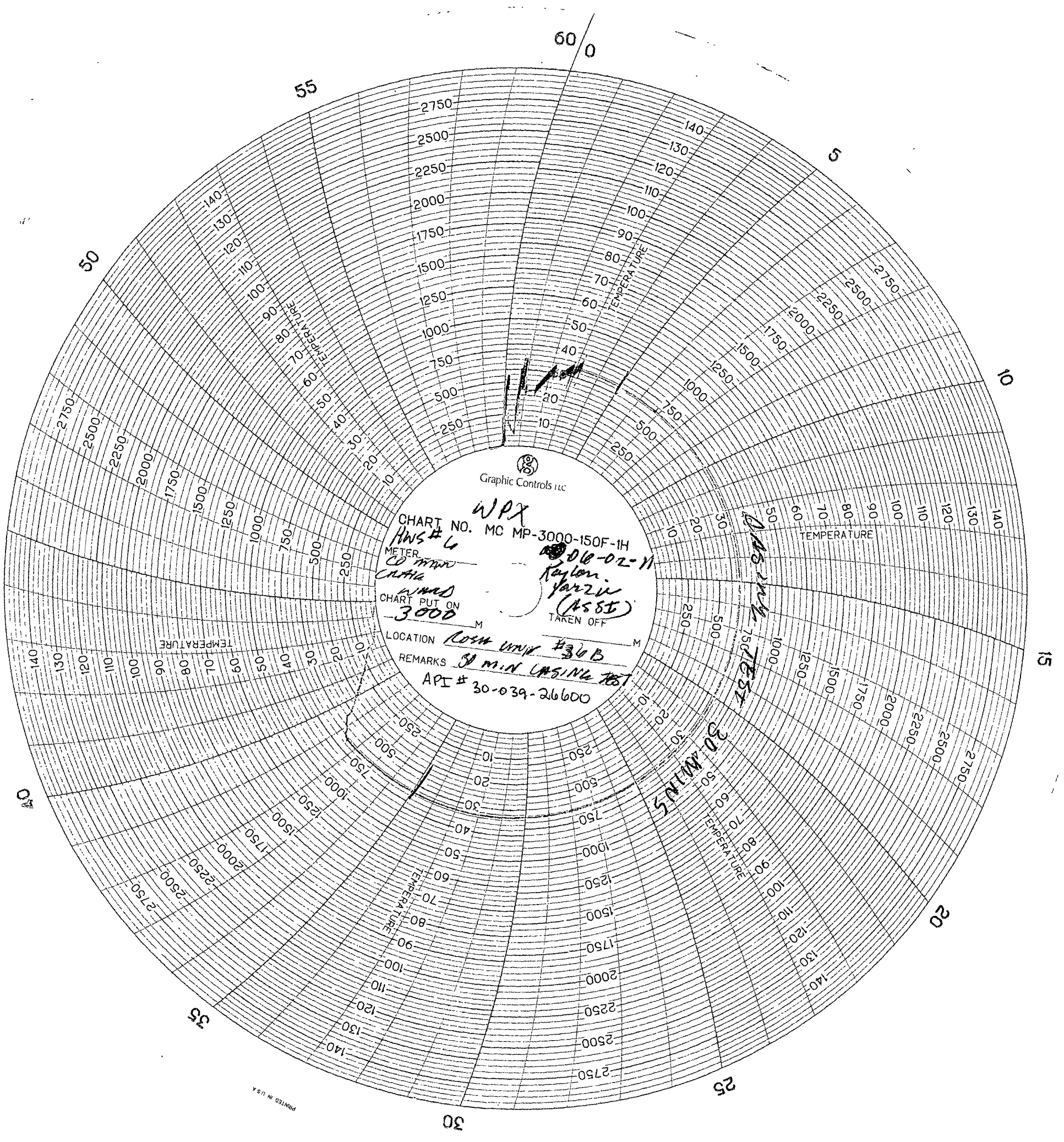
ACCEPTED FOR RECORD

ARMINGTON FIELD OFFICE

Title 18 U S C Section 1001, makes it a crime for any person knowingly and willfully to make to any department or agency of the United States any false, fictitious or fraudulent statements or representations as to any matter within its jurisdiction.

ARMINGTON A

- 6/3/2011 Test 7" x 9 5/8" secondary seal 1500 psi 30 min, no lk off ; Baker RBP @ 2050', pump 1 bbl wtr to load 7" 20# csg, Antelope RU tst unit w/ chart recorder ; (braden head repair), st press tst @ 10:00, press 7" 20# csg, tbh head & BOP's to 650 psi per engineer, chart tst for 30 min, no leak off, no communication to braden head, tst end @ 10:30.
- 6/4/2011 SITP=180# SICP=180#, braden head press=0. land 2 3/8" 4.7# J55 eue tbh as follows top down: 186 jts, 1.78" SN @ 5836', 1 jt, 1/2 muleshoe @ 5869'



Graphic Controls Inc.

CHART NO. *WPX*
MC MP-3000-150F-1H

METER *ANS # 6*
CO MAN *08-02-11*
CALIB *Raylon*
Yarzi
(ASST)

CHART PUT ON *3000*
TAKEN OFF

LOCATION *Room Unit #30B*

REMARKS *30 min. LBSING TEST*
API # *30-039-26600*